



BRYNTEG
Country & Leisure Retreat

Escape to...

BRYNTEG COUNTRY & LEISURE RETREAT



**ENJOY A
LIFETIME OF
HOLIDAYS**
BOOK A VISIT
TO OUR PARK



**ENJOY YOUR HOLIDAY
HOME 365 DAYS A YEAR**



**SOAK UP THE STUNNING
VIEWS ON-PARK**



**EXPLORE THE SPECTACULAR
SNOWDONIA NATIONAL PARK**



**UNWIND IN OUR POOL,
OR ON-PARK RESTAURANT**



**FIND ADVENTURE WITH OUR
PLAY PARK, SPORTS COURTS
& LEISURE ACTIVITIES**

www.parkleisure.co.uk/brynteg

WELCOME TO a lifetime of holidays

WITH YOUR OWN
HOLIDAY HOME ON-PARK

CONTENTS

WELCOME TO BRYNTEG	3
A LIFETIME OF HOLIDAYS	4 & 5
WHY YOU'LL LOVE BRYNTEG	6
LOTS TO DO ON-PARK	7
ENJOY GREAT CUISINE ON-PARK	8
RELAX & UNWIND	9
ENJOY THE LOCAL LIFESTYLE	10 & 11
DINE OUT SOMEWHERE LOCAL	12 & 13
FIND YOUR ADVENTURE	14
WE'RE PASSIONATE ABOUT PETS	15
YOUR NEW LEISURE LIFESTYLE	16
11 STUNNING LOCATIONS	17
A HOLIDAY HOME FOR YOU	18 & 19
OUR CUSTOMER SERVICE	20
SUBLETTING YOUR HOLIDAY HOME	21
LIFE AS AN OWNER	22
FREQUENTLY ASKED QUESTIONS	23
CONTACT US	24



Welcome to **BRYNTEG**

NORTH WALES

In the foothills of Snowdon and with its own private lake, our park is the perfect location to discover the surrounding countryside. The miles of picturesque coastline, quaint villages and the unique scenery of Snowdonia National Park are yours to explore.

Our on-park facilities include a state-of-the-art gym, indoor heated swimming pool, hydrotherapy pool, steam room and sauna for the ultimate in pampering luxury. If exploring Snowdonia National Park isn't for you, Brynteg's leisure facilities also include sports courts, play parks, and more, keeping your whole family entertained.

With so much to do and see at Brynteg, North Wales is one of the most desirable places to own a holiday home.



PET-FRIENDLY
...bring the whole family.

Brynteg is a pet-friendly park meaning the whole family are welcome.

A lifetime of holidays AT **BRYNTEG**

WELCOME TO YOUR NEW LEISURE LIFESTYLE

Take a leisurely dip in the pool, or take a stroll through awe-inspiring natural landscapes – rest and relaxation is right on your doorstep at Brynteg. If you're looking to wind down and escape from everyday life, a quiet moment in the sauna and steam room followed by a tasty meal in one of the on-park eateries is the perfect tonic.

For those looking for a little more adventure, we're within easy reach of North Wales' many attractions. So whether you like to discover medieval castles, explore the many walking and cycling trails in Snowdonia, or head to one of the nearby towns or villages for a delicious meal, there's something for the whole family to enjoy, every time you visit.



All to enjoy AT BRYNTEG

5-star accredited holiday park

Open all year round

Pet-friendly
the whole family's welcome

Ideally placed near
Snowdonia National Park

The Old Boat House and
Country Club Bar & Restaurant

State-of-the-art gym

Indoor swimming pool,
sauna & steam room

Children's adventure play park,
activities, & indoor soft play area

Sports courts



Fun for
all the
family

Dine on
the lake



Explore
Snowdonia



Relax &
unwind



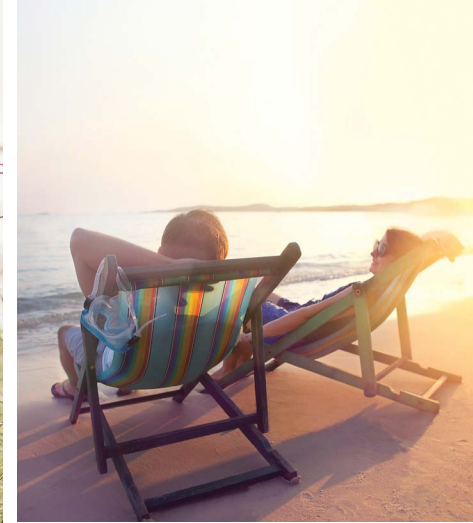
Why you'll love BRYNTEG

ENJOY YOUR HOLIDAY HOME 365 DAYS A YEAR

While other parks are closed, we are thriving throughout all four seasons. So whether you're seeking a peaceful weekend break, or a relaxing week long stay, we'll be ready to welcome you come rain or shine. Look forward to a break away with a difference and reconnect with family and friends, all year round.

WE ARE PASSIONATE ABOUT PETS!

Here at Brynteg, we know that many of our owners see their pets as another member of the family, and we wholeheartedly agree. That's why our park is pet-friendly, creating the perfect home-from-home experience, for both you and your four-legged friends.



Lots to do ON - PARK EVERY SINGLE STAY FOR THE WHOLE FAMILY!

LEISURE

Our leisure complex offers instant relaxation in a state-of-the-art facility. At the heart of the complex, you'll find a heated indoor swimming pool, which offers a great environment to enjoy quality time with the family or a quick dip with friends. There is also a hydrotherapy pool, the perfect place to try some water therapy. The complex is also home to a sauna, steam room, tepidarium room, rainforest showers and gym, meaning you can easily spend a few hours working out or rejuvenating yourself.

ADVENTURE PARK & SOFT PLAY

Choose from an exciting indoor soft play area or our outdoor adventure park, meaning you can relax safe in the knowledge that the kids are having a great time.

SPORTS & ACTIVITIES

We have a range of indoor and outdoor activities for both adults and children to try. Challenge your friends to a game of tennis at our outdoor tennis courts, try your hand at archery, or take to our indoor climbing wall for the ultimate challenge. The kids can also take part in a range of organised activities on-park, giving them the opportunity to try something different, and to make new friends during their time here.

[FIND OUT MORE](#)



Indoor
Pool



Soft
play
area



Sauna
& steam
room



ENJOY *great cuisine on-park*

AT THE OLD BOAT HOUSE AND COUNTRY CLUB

If you're looking for somewhere to eat out around Brynteg, there are so many places to visit to satisfy your appetite, whatever your taste or occasion. Rather relax on-park? At The Country Club and the lakeside restaurant, The Old Boat House, you will have the opportunity to relax and simply enjoy your time at Brynteg, sample a great selection of beers, wines and spirits from the fully stocked bar, dine from the delicious menu, and look out onto our lake and stunning views beyond.

With a tasty menu offering both traditional and seasonal dishes, there is something for all tastes including the kids who have their own menu to choose from. Not only that, but your four-legged friend is also welcome in certain areas of our restaurants.

TAKE A LOOK



RELAX & UNWIND IN OUR *luxury spa*



Hydrotherapy
pool



Steam
room



Tepidarium
room

YOUR LUXURY LEISURE RETREAT

Brynteg's spa is the perfect place to rediscover your well-being in a tranquil and relaxing atmosphere. Our quiet rooms and ambient surroundings allow you to step away from the hustle and bustle and unwind with a pampering session that will restore balance and harmony. Imagine a day of a total relaxation, taking a soothing dip in the hydrotherapy pool, take your breath away in a Scandinavian Pine Sauna, or indulge in the tepidarium room. What better way to let all the worries wash away.

We offer a range of therapies for you to enjoy, including:

HYDROTHERAPY POOL

The sea shell shaped pool which runs at a constant 35°C, offers a range of invigorating and tingling water therapy and massages.

SCANDINAVIAN PINE SAUNA

Take in the pine and eucalyptus aroma when you enter and it almost takes your breath away in the nicest sense. A total immersion in a 75°C dry heat which is a really great way to detox your body.

STEAM ROOM

Hot and very humid like a rain forest, but even hotter and with a twinkling starry sky to gaze up at through the eucalyptus fragranced steam. 15 minutes is all you really need, but you will feel totally detoxified and ready for anything.

TEPIDARIUM

Used by the Romans after a steam or sauna, or after a spell in the Ampitheatre. The perfect place to relax and unwind the body whilst you lie on lovely warm mosaic tiled beds and take in the slightly humid atmosphere to help re-hydrate your body before the next step. Relaxing background music will complete this experience!

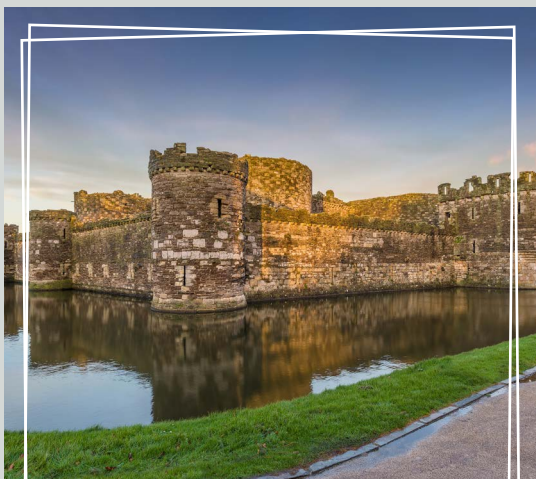
RAINFOREST SHOWER

Not just any shower; the hot water is infused with rose essence and the cold is infused with mint to try in between treatments or at the end to refresh your body. Lots of fun too.

ENJOY THE local lifestyle

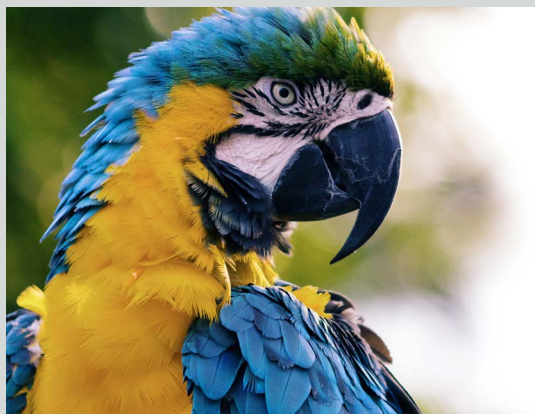
We support our local community, helping out with community projects and charity initiatives close to our hearts and park.

Here are just some of our favourite places to visit...



BEAUMARIS CASTLE

Located on the idyllic island of Anglesey, this incredible fortification is billed as 'the great unfinished masterpiece'. Under construction for 30 years, the castle is still incomplete.



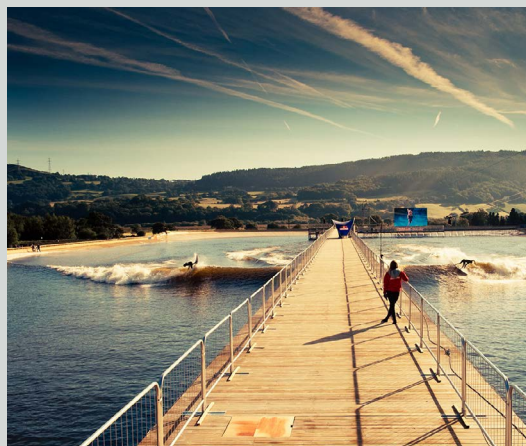
WELSH MOUNTAIN ZOO

A perfect day out for all the family awaits at this expansive zoological garden. As the 'oldest and most established zoo in Wales', the little ones are bound to love greeting all of the animals. Take the opportunity to amble through the zoo's 37-acre landscape, accompanied by views of near Colwyn Bay and the Carneddau mountains.



MOUNT SNOWDON

Whether you climb the 1,805m to the peak or catch the train, the views at the top of Snowdon are worth the trip.



SURF SNOWDONIA

Escape to the only guaranteed surf break in the UK at Surf Snowdonia. Located in the heart of beautiful North Wales, the surf school is set against a backdrop of the forest and mountains of Snowdonia. Expert surf tuition and reliable waves make this the ideal, family-friendly training area.



CAERNARFON CASTLE

Discover the rich history behind this intimidating 700-year-old fortification, steeped in medieval legend.



ZIP WORLD

Experience the thrill of flying as you hurtle down the longest zip line in Europe at speeds in excess of 100mph!



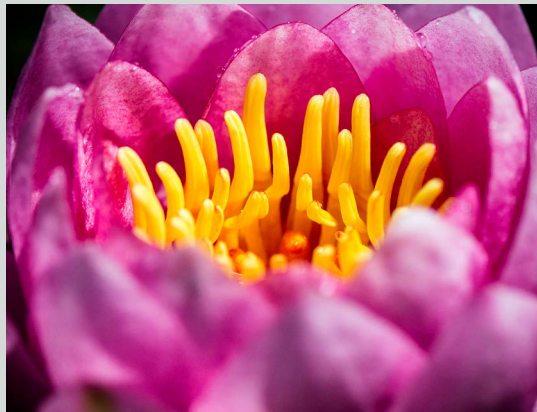
BOUNCE BELOW

Set in a former slate mine, delve into the depths of North Wales and bounce, slide and roll your way through this network of family fun.



PUFFIN ISLAND

Puffin island is an uninhabited island off the Menai Strait. Take a boat trip to see the stunning scenery and discover the more than 14 different breeds of birds depending on what season you visit in.



BODNANT GARDEN

A self-described 'historic, horticultural gem', this immaculate National Trust site has been drawing visitors from afar for many years - and it's no surprise why. The Bodnant Garden gives views of the Conwy Valley, with the picturesque backdrop of the Carneddau Mountain Range. Marvel at the gardens, flowers and displays on offer!



GARTH PIER

Stretching out into the beautiful Menai Strait with breathtaking views of Mount Snowdon, prepare to be amazed.



SYGUN COPPER MINE

Explore this fascinating Victorian copper mine while enjoying the best of the local area. Take a self-guided audiovisual tour and discover the magnificent winding tunnels and the stunning stalactite and stalagmite formations.



GREENWOOD FAMILY PARK

GreenWood Family Park offers roller coasters, river rides, activities, live shows, crafts and a maze. More than enough to keep everyone entertained, whatever the weather.



GREAT ORME

Sometimes you can't beat a breathtaking natural spectacle - that's exactly what will greet you if ascend the Great Orme, a magnificent limestone headland with dolomite cliffs and a plethora of rare flora, fauna and wildlife. It's well worth the gruelling climb for the splendid panoramic views of Llandudno and the Welsh coast.



SNOWDONIA MOUNTAIN RAILWAY

For those who'd rather spare several hours of walking, take the 4.7 mile train journey to the summit of Snowdon. Incredible views await, as does a great experience for rail enthusiasts.



CONWY CASTLE

Ordered by Edward I after his conquest of Wales, this World Heritage site offers a fascinating slice of Welsh history, steeped in war, conflict and siege. Designed by James of Saint George, Conwy was a 13th-Century project for a walled garrison town. Soak up the structure's imposing 13th-Century walls.



Dine out **EVERY NIGHT...** SOMEWHERE LOCAL

TOGETHER WE ARE SUPPORTING OUR LOCAL COMMUNITY



AINSWORTHS

41 Bridge St, Caernarfon, LL55 1AF.

After a coastal walk by the sea, nothing quite beats some traditional fish and chips. At Ainsworths, fresh fish is caught daily off the coast and cooked to order for you to enjoy. It's considered locally to be one of the best places to visit for dinner by the sea.



1815

1815 Waterloo St, Bangor, LL57 1DS.

Pop into 1815, situated in Bangor, for a range of fresh and delicious dishes. Whether you opt for a hearty breakfast, warming jacket potato, selection of tapas plates or simply a scone served with a pot of tea, you're sure to enjoy your experience.



DYLAN'S

St. George's Road, Menai Bridge, Anglesey, Menai Bridge, LL59 5EY.

Dylan's have created a modern, light building over two floors with sun terraces and stunning views across the Strait. The restaurant serves locally sourced, seasonal produce, specialising in freshly baked pizza and seafood. The menu is a celebration of the abundant seafood and farm produce available on and around Anglesey.



THE SOSBAN AND THE OLD BUTCHERS

Trinity House, 1 High St, Menai Bridge, LL59 5EE.

Located in the heart of Menai Bridge on the Isle of Anglesey, within a historical butcher's shop, this dining experience is a little different to most. Creating a series of dishes using the best locally sourced produce available on the day, this restaurant provides a unique culinary journey not found anywhere else.



THE MILL BISTRO Y FELIN

Llanberis Road, Pontrug, Caernarfon, LL55 2BB.

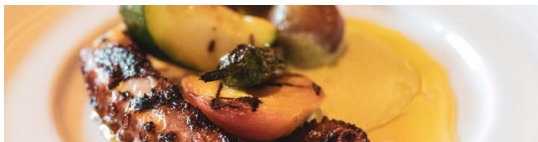
Treat yourself to breakfast, lunch, or a classic Sunday roast at the relaxed and friendly Mill Bistro Y Felin. The eatery uses the freshest local ingredients to make a range of delicious dishes throughout the day.



OYSTER CATCHER

Maelog Lake, Rhosneigr, LL64 5JP.

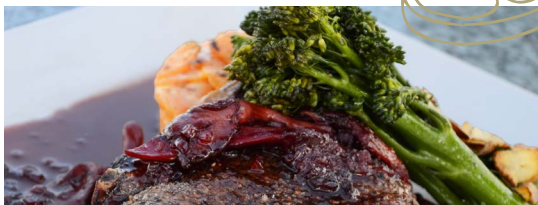
If you're looking for stunning views, delicious food and warm service, Oyster Catcher in the heart of Rhosneigr is ideal. Tuck into mouth-watering seafood, savour meat from award-winning local butchers and sample a good range of smooth guest ales.



THE MARRAM GRASS

White Lodge, Niwbwrch, Pen-lôn, Llanfairpwllgwyngyll, LL61 6RS.

Discover the true taste of Anglesey by dining at The Marram Grass. Every ingredient used is locally sourced or picked from the eatery's very own garden. For a truly indulgent treat, be sure to try their surprise taster menu.



LAWTON'S GRILL

147 Mostyn St, Llandudno, LL30 2PE.

Whether you fancy a juicy steak, succulent burger or classic dish such as lamb shank, Lawton's Grill has it all. It makes for a great place to visit for a hearty meal while enjoying the best of what North Wales has to offer.



THE TAVERN ON THE BAY

Red Wharf Bay, Anglesey, LL75 8RJ.

Take in marvellous views of the surrounding beach while enjoying a tasty meal at The Tavern on the Bay. The gastropub serves a range of delicious recipes, including Conwy ribeye steak, pan roasted duck breast and roast hake, plus plenty of pizzas, burgers and vegetarian options.



THE WHITE EAGLE

Rhoscolyn, Holyhead, LL65 2NJ.

Overlooking the stunning Anglesey coastline, The White Eagle has a warm, friendly atmosphere and a seasonal menu featuring the very best British dishes, each one showcasing their relationship with local farms and producers, from award-winning local family butchers to oysters freshly caught from the Menai.



THE COTTAGE LOAF

Market St, Llandudno, LL30 2SR.

Retreat to The Cottage Loaf for a hearty meal with loved ones. The country pub is nestled in the heart of Llandudno, and serves a range of locally sourced, classic dishes. Specialities include a fish market platter, steak and Conwy ale pie, and The Loaf's gourmet steak burger.



THE MIDLAND TAPAS & WINE BAR

38 Castle Street, Beaumaris, Anglesey, LL58 8BB.

At The Midland, you'll discover authentic and modern tapas. Their dishes always start with the best ingredients to create gourmet tapas with seasonal specials based around local produce. The combination of good wine, good food and a stylish, vibrant restaurant combines to make a great experience.



FRECKLED ANGEL

49 High Street, Menai Bridge, LL59 5EF.

If you're after a top restaurant with quality service and a welcoming and relaxed setting, look no further than the Freckled Angel. The combined concept of Spanish tapas with British flavours, using locally sourced ingredients creates a unique dining experience for you to enjoy.



THE BULL, LOFT & COACH RESTAURANTS

Castle Street, Beaumaris, Anglesey, LL58 8AP.

A restaurant where you can sit back and indulge in Andy Tabberner's outstanding combinations of local produce and imaginative ingredients. Begin your evening in the relaxing lounge where they serve canapés and drinks, then make your way up to the elegant loft to continue your mouth-watering experience.

OFF-PARK ACTIVITIES

find your adventure



FIND OUT MORE

North Wales is an adventurer's paradise with mountain ranges, stunning beaches and charming countryside. With a variety of off-park activities for you to immerse yourself in, it's easy to find your next adventure at Brynteg.

WATER SPORTS

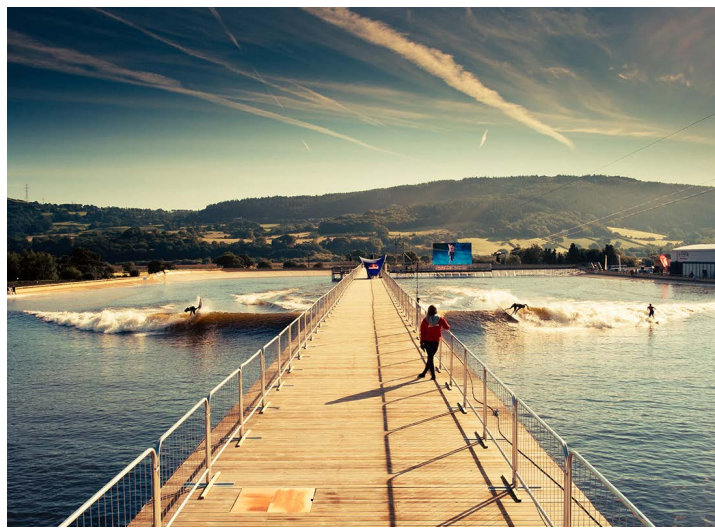
With close access to the beach, not only do you have a choice of unaided water sports on-hand, we are also close to two specialist water sports centres.

SURF SNOWDONIA

Take to the waves against the backdrop of Snowdonia at the world's first inland surf lagoon. Surf Snowdonia delivers a variety of waves for both beginners and pros, and everyone in between. They also offer paddleboarding, canoeing and an outdoor climbing wall too.

PLAS MENAI WATER SPORTS CENTRE

This National Outdoor Centre is a short drive from the park and offers the ultimate outdoor adventure with activities including sailing, windsurfing, kayaking, mountain biking plus lots more all delivered with expert instructors.



GOLF

With impressive golf courses within easy reach of the park, Brynteg is the perfect base for you to perfect your swing.

HENLLYS GOLF COURSE

Situated in Beaumaris on the Isle of Anglesey, this beautiful course boasts spectacular views of both the Snowdon mountain range and the Menai Strait. Surrounded by trees and natural water hazards, the setting of this course cannot be beaten.

CARDEN PARK

Located in Cheshire, Carden Park has two courses which are ideal for real golf enthusiasts. The Cheshire course offers many challenges along the way with natural hazards to test your golfing skill. Situated at the back of the estate, the golf course has beautiful views across the estate and the Welsh hills beyond. The bunkers have been designed to flow with the natural contours of the landscape; you will need a sharp swing to keep out of them all.

The Nicklaus course at Carden Park was famously designed by the great Jack Nicklaus and son. A picturesque start at the first hole awaits. Located next to the onsite vineyard and offering beautiful views of the Welsh hills, your game leads you around the front of the Cheshire country estate.



WE'RE *passionate* ABOUT PETS

Here at Brynteg, we know that many of our owners see their pets as another member of the family, and we firmly believe this too. That's why Brynteg is ideal for pet-friendly breaks, creating the perfect home-from-home experience.

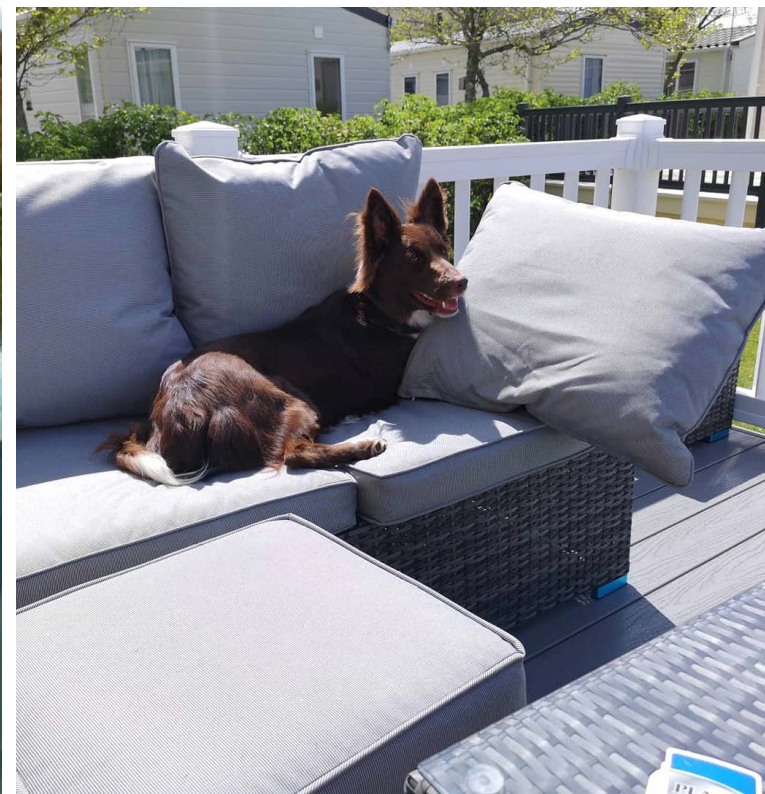
We have dedicated areas in our bar and restaurant, so if you fancy a light bite or tippie in the Country Club, but don't want to leave your dog on its own, that's okay!

Your dog is free to explore on it's lead around our park including the forest. Or off-park there are plenty of dog walks and adventures on the horizon including stunning Snowdonia, Aber Falls, and Llandudno which are the perfect places for your dog to feel the wind in their ears.

WE'RE PASSIONATE ABOUT PETS AT BRYNTEG

...and that doesn't just mean we're dog-friendly. Bring your cat, rabbit, budgie, parrot or tortoise along too! Contact our on-park experts for more information about which pets you can bring along with you.

[FIND OUT MORE](#)



YOUR NEW leisure lifestyle

IN YOUR DREAM HOLIDAY HOME

5-STAR ACCREDITED PARK

We are a 5-star Visit Wales award-winning park. Our park is sympathetically designed to protect and enhance the local landscape and wildlife on-park.

OWNER COMMUNITIES

Whether you're looking for a quiet retreat or a home away from home, at Brynteg you'll find our owners at the heart of our community on-park. With a variety of events for you to enjoy, you will soon be meeting your neighbours and creating lasting memories.

OPEN ALL YEAR ROUND

Our 12-month holiday season allows for you to enjoy your holiday home all year round. The only decision you will need to make is whether it's a quick, summer weekend away or a long, relaxing autumn break.

WE ARE PASSIONATE ABOUT PETS

Families are important to us at Brynteg, and because pets can be a big part of them, our park is pet-friendly.

A PART OF THE PARK LEISURE FAMILY

Brynteg is part of the Park Leisure park family. With over 20 years' experience of creating stunning holiday parks, we continue to develop them with our owners in mind.



"Life is about memories and the ones I've had so far at Brynteg, in such a short space of time, will last forever..."

"Brynteg is our happy place and has been for over 15 years. We still get the same sense of 'home' when we pull up on-park. We're looking forward to another great year here."

"It's a beautifully located park, and the kids love it too. We look forward to seeing our friends every time we visit."

"My favourite place of all. Everything you want in one place and lovely, helpful, friendly staff. Great for families, we are always well looked after. Once you have been for a visit you will want to stay here forever."

What our owners say...



FIND OUT MORE

WITH 11
stunning parks
ACROSS THE UK
THERE'S SURE TO BE ONE FOR YOU



A HOLIDAY HOME *that's right for you*

FIND THE PERFECT 'HOME AWAY FROM HOME' FOR YOU

At Park Leisure, we're proud to provide a wide range of new and pre-owned holiday homes and lodges. Whether you're looking for your first purchase or simply to upgrade, we're sure you'll find something to suit your taste and budget.



BOOK A VISIT TO VIEW OUR HOLIDAYS HOMES ON-PARK

Park Leisures' trusted suppliers include:



Our HOLIDAY HOMES

All our holiday homes are spacious and comfortable, full of fantastic features, offering you and your family all the luxuries you'd find at home.

2 bedrooms (sleeping up to 6) or
3 bedrooms (sleeping up to 8)

Measuring up to 14ft wide

Main bathroom, plus en-suite
(on selected models)

Open-plan living & dining areas

Fitted modern kitchen,
some with integrated appliances

Double glazing & central heating
(on selected models)

VIEW OUR HOLIDAY HOMES



Great for families



All images used are for illustrative purposes only

Our LODGES

Pushing the boundaries of holiday home design, you'll find levels of style, comfort and practicality of the finest quality.

2 bedrooms (sleeping up to 6)
or **3 bedrooms** (sleeping up to 8)

Extra spacious,
typically available up to 20ft wide

En-suite, complete with large shower area

Considerable bathroom space
with full size bath options available

Fully-fitted kitchen,
with branded integrated appliances

Utility room with washer/dryer

VIEW OUR LODGES



Stylish & comfortable



Our SUPER LODGES

Exquisitely designed and packed with stunning details, you'll find sophistication and style echoed throughout. Luxury holiday home living at its finest!

2 bedrooms (sleeping up to 6),
or **3 bedrooms** (sleeping up to 8),

Extra spacious,
typically available up to 22ft wide

Built-in music system option available

Walk-in wardrobes

King size bed

Spacious second, and third bedrooms

Fully-fitted kitchen,
with branded integrated appliances

Utility room with washer/dryer

VIEW OUR SUPER LODGES



Super spacious



OUR customer service

ENJOY A RELAXING EXPERIENCE ON-PARK



With Park Leisure, you can sit back and relax while we take care of everything for you; from making a reservation at your favourite restaurant to giving your holiday home a full valet*. Each park has a dedicated team member to look after our owners' requirements throughout the year - delivering a bespoke service that gives you a relaxing experience every time you visit. As soon as you drive onto our park, we want you to relax, let us take the stress away and make your visit a luxury leisure experience, your only focus should be you.

RELAX

GETTING READY FOR YOUR ARRIVAL:

- Water and heating turned on, so it's cosy and warm

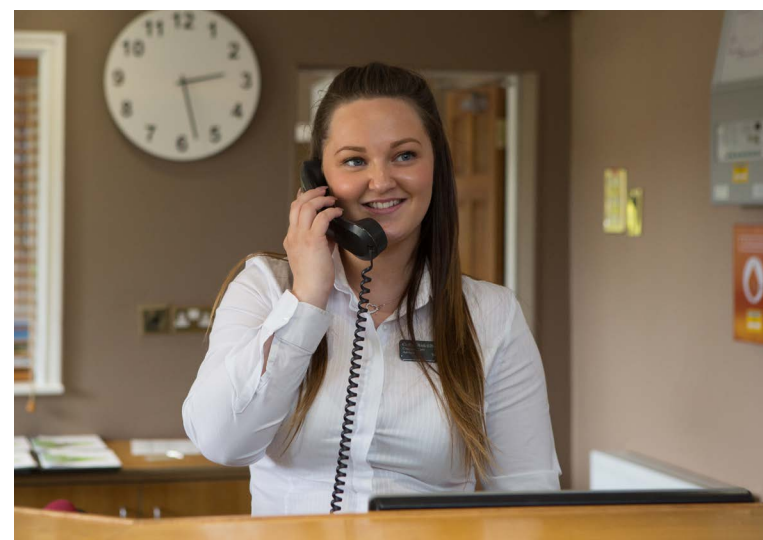
DURING YOUR STAY:

- Restaurant, taxi and local attraction booking service
- Local events and area knowledge
- Local weather, tide times and wave forecasting
- Laundry service*

THINKING OF YOU WHEN YOU ARE NOT WITH US:

- Weekly peace of mind checks for your holiday home
- External holiday home cleaning*

LET US TAKE CARE OF EVERYTHING



*Extra charge applies.

Subletting your HOLIDAY HOME

HELPING TOWARDS YOUR RUNNING COSTS

When you become a holiday home owner at Brynteg, you will be given the opportunity to join our sublet scheme. This is a great way to contribute towards your annual running costs when you're not using your holiday home.

If you'd like to find out more about whether subletting could be for you, click the link below or ask our on-park team who will be happy to answer any further questions you have.

[FIND OUT MORE](#)

WHAT DO I NEED TO DO TO BECOME

PART OF THE SCHEME?

All you need to do is let us know when you wish to use your holiday home. Don't worry if you change your mind, just give us a call and as long as a booking has not already been taken that cannot be reallocated, we would love to see you on-park.

WE'LL TAKE CARE OF THE REST...

We will;

- **Asses your holiday home to determine which of our accommodation grades it fits into.** As a sublet owner, you will be responsible for ensuring your holiday home is maintained to the agreed grade.
- **Let your holiday home out on your behalf.** This includes being featured on our website, being distributed through third parties, and being included in marketing communications.
- **Process the bookings including all pre-arrival information.**
- **Prepare your holiday home for guests, and look after them during their stay.**
- **Prepare your holiday home for your return.**

HOW MUCH CAN I EARN?

The more nights you agree to let your holiday home, the more you could earn. Some other factors including the size and age of your holiday home should also be taken into account as some accommodation grades are more in demand. As a family-friendly park, school holiday dates are our busiest times, so agreeing to let during those times will give you more earnings. Pet-friendly accommodation is also very popular at Brynteg, so if you are happy to welcome pets into your holiday home, there is the potential to gain more income too.



TOP TIPS FOR SUBLETTING

3 BEDROOM
holiday homes
are highly
sought-after

Demand for
PET-FRIENDLY
accommodation
is on the rise

DECKING
is particularly
desirable

**SCHOOL
HOLIDAYS**
are our busiest
times for holidays





Life as an owner

WITH PARK LEISURE

Think endless memories of exploring the great outdoors, cosy nights in and fun times with your new friends at your holiday park. Life as an owner offers the best of both worlds; peace and rejuvenation from day to day life and the option to be adventurous and explore your new local hotspots.

A WARM COMMUNITY

Be a part of a wonderful community with our welcoming homeowner lounges where you can relax on-park with friends.

ON YOUR DOORSTEP

Achieve the perfect work-life balance and feel like you're permanently on holiday with a Park Leisure holiday home. Relax and unwind with family and make full use of the on-site facilities, or head out on a road trip and explore local wonders and famous attractions.

EXCLUSIVE PARK LEISURE EVENTS

Coffee mornings and wine-tasting are just some of the events held at our parks throughout the year.

DEDICATED CUSTOMER CARE TEAMS

From the moment you arrive at the park and throughout your ownership, our Customer Care Teams are there to help make your time with us relaxed and enjoyable. Speak to our dedicated Customer Care Team on hand throughout your time at Brynteg.





FREQUENTLY ASKED questions

HOW MUCH ARE THE SITE FEES?

Our annual site fees are between £6,950 and £10,412^.

HOW LONG IS THE SEASON?

Our park benefits from having a 12-month season, meaning you can enjoy all four seasons on-park. Whilst many other holiday parks close for the winter season, you can be sure to enjoy everything from Halloween and Christmas, to New Year and Valentine's Day from the comfort of your holiday home or lodge at our park.

CAN MY FAMILY AND FRIENDS USE MY HOLIDAY HOME?

The best thing about getting a holiday home, is the sense of community it brings with it. Not only will you enjoy meeting and socialising with your new neighbours, but you can entertain family and friends from your new home too. Most of our holiday homes are either 2 or 3 bedrooms, so family and friends can stay with you, or if you're feeling generous they're able to stay in your holiday home when you're away, too.

HOW MUCH ARE HOLIDAY HOMES?

Our pre-owned holiday homes start from £34,995^

Our new holiday homes start from £49,995^

Finance options are available^

Monthly payment £566.83 x 120 months @ 6.9% APR

REPRESENTATIVE EXAMPLE BASED ON SWIFT BURGUNDY 35X12 - 3 BEDROOM HOLIDAY HOME

Cash price £54,995.00	Monthly payments 119 x £566.83
Customer deposit £5,500.00	Final payment £566.83
Total amount of credit £49,495.00	Total amount payable £73,519.60
Purchase fee - inc. in final payment £10.00	Representative APR 6.9% APR
Duration of agreement 120 months	Interest rate (fixed) 6.69%

OUR ON-PARK TEAM WILL BE HAPPY TO ANSWER ANY FURTHER QUESTIONS YOU HAVE.

*Park Leisure 2000 Ltd (trading as Park Leisure Holiday Homes) is authorised by the FCA with limited permissions to conduct certain credit related activity, Park Leisure 2000 Ltd are a credit broker, not a lender. Finance illustration is based on a 2020 Swift Burgundy 35ft x 12ft, 3 bedroom holiday home. Finance illustration provided by Blackhorse. Finance can be taken over 24-120 months. Park Leisure is an intermediary and can introduce you to a limited number of lenders who provide funding. We may receive commission or other benefits for introducing you to such lenders. Finance is subject to status, available to applicants aged 21 and over, residing in the UK. Terms and conditions apply. As part of the application process, a creditworthiness assessment may be conducted by the lender which may involve a Credit Reference Agency check. Your holiday home may be repossessed if you do not keep up repayments on your credit agreement. This offer is not available as part-exchange. Park Leisure 2000 Ltd is authorised and regulated by the Financial Conduct Authority (Limited Permissions Firm Reference Number 668081). Registered in England. Registered No: 03352005. Registered Office: Unit 1, Tudor Court, York Business Park, Poppleton York, YO26 6RS. ^Terms & Conditions apply: Visit www.parkleisure.co.uk/terms-and-conditions



BRYNTEG

Country & Leisure Retreat

Brynteg Country & Leisure Retreat
Llanrug, Near Caernarfon, Gwynedd, **LL55 4RF**
TEL: 01286 873 100
WWW.PARKLEISURE.CO.UK/BRYNTEG



FIND OUT MORE ABOUT BRYNTEG



TAKE A VIRTUAL TOUR
www.parkleisure.co.uk/virtual-tour



BOOK A PRIVATE APPOINTMENT
www.parkleisure.co.uk/personal-appointment



DROP US AN EMAIL
Dan.Rylance@parkleisure.co.uk

FIND OUT MORE ABOUT OUR PARKS

CHANTRY, YORKSHIRE DALES & LITTONDALE - NORTH YORKSHIRE / AMBLE LINKS - NORTHUMBERLAND / RIBBLE VALLEY - LANCASHIRE
PLAS COCH & BRYNTEG - NORTH WALES / MALVERN VIEW - HEREFORDSHIRE / PAR SANDS, OYSTER BAY & PENTIRE - CORNWALL