



PAR SANDS
Coastal Holiday Park

Escape to...

PAR SANDS COASTAL HOLIDAY PARK



**ENJOY A
LIFETIME OF
HOLIDAYS**
BOOK A VISIT
TO OUR PARK



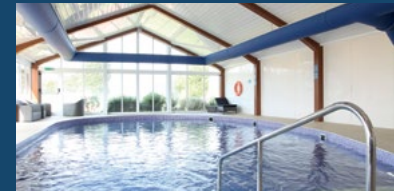
**ENJOY YOUR HOLIDAY
HOME 365 DAYS A YEAR**



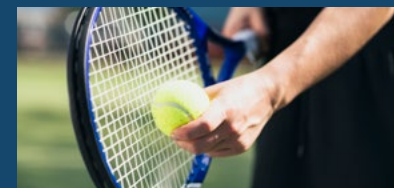
**DIRECT BEACH ACCESS
FROM THE PARK**



**EXPLORE THE SPECTACULAR
CORNISH COASTLINE**



**UNWIND IN OUR
INDOOR POOL**



**FIND ADVENTURE WITH OUR
PLAY PARK, TENNIS AND SPORTS
COURTS & PUTTING GREEN**

www.parkleisure.co.uk/par-sands



Just 40 minutes from Newquay Airport

WELCOME TO a lifetime of holidays WITH YOUR OWN HOLIDAY HOME ON-PARK

CONTENTS

WELCOME TO PAR SANDS	3
A LIFETIME OF HOLIDAYS	4 & 5
WHY YOU'LL LOVE PAR SANDS	6
YOUR LIFESTYLE ON-PARK	7
SUBLETTING YOUR HOLIDAY HOME	8
ENJOY GREAT CUISINE	9
ENJOY THE LOCAL LIFESTYLE	10 & 11
DINE OUT SOMEWHERE LOCAL	12
LIFE AS AN OWNER	13
YOUR NEW LEISURE LIFESTYLE	14
11 STUNNING LOCATIONS	15
A HOLIDAY HOME FOR YOU	16 & 17
OUR CUSTOMER SERVICE	18
FREQUENTLY ASKED QUESTIONS	19
CONTACT US	20



Welcome to PAR SANDS

CORNWALL

Par Sands is nestled just behind the sand dunes of the picturesque, dog-friendly, Par Beach, and is just a stone's throw from the water's edge. You can enjoy the freedom to explore the unspoilt scenery and local treasures at your leisure, or stroll along the many stunning, nearby beaches. What's more, the globally-renowned biomes of the Eden Project are just a short journey away and make for an incredible family day out, anytime you visit.

Our fantastic on-park facilities ensure you and your family will always be entertained; enjoy the indoor heated swimming pool, sports courts, tennis courts, adventure playground, or putting green. Then once the activities are over, head to Par Beach Café for some delicious food right on Par Beach!



PET-FRIENDLY
...bring the whole family.

Par Sands is a pet-friendly park meaning the whole family are welcome.



A lifetime of holidays **AT** **PAR SANDS**

WELCOME TO YOUR NEW LEISURE LIFESTYLE

If you're looking for rest and relaxation, Par Sands makes for the perfect place to find that most-important tranquillity. Whether you make use of the excellent on-site facilities, including the heated indoor pool, or find solace in the nearby calming waters of Par Beach, there's plenty to discover.

If you're looking for a little adventure, with a choice of beaches on our doorstep, you can try your hand at many water sports available locally, or enjoy a family day out and head to a nearby town for a fun trip in the local area. With plenty of attractions to visit, you'll never be bored!

All to enjoy

AT PAR SANDS

5-star accredited holiday park

Open all year round

Pet-friendly - the whole
family's welcome

Indoor pool

Children's play park

Sports courts, tennis courts
& putting green

Par Beach Café

Beachside location



Visit the
local area



Enjoy the
outdoors



Relax &
unwind

Fun for
all the
family

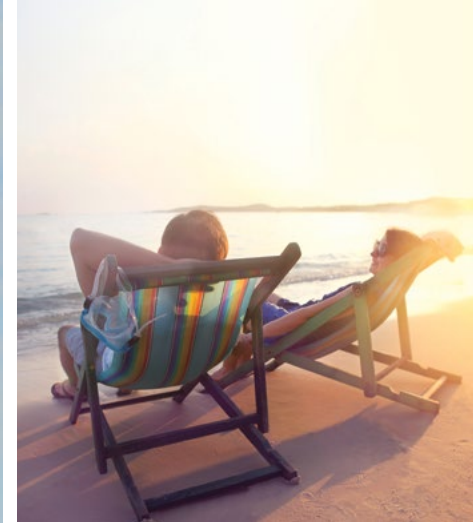
Why you'll love PAR SANDS

ENJOY YOUR HOLIDAY HOME 365 DAYS A YEAR

While other parks are closed, we are thriving throughout all four seasons. So whether you're seeking a peaceful weekend break, or a relaxing week long stay, we'll be ready to welcome you come rain or shine. Look forward to a break away with a difference and reconnect with family and friends, all year round.

WE ARE PASSIONATE ABOUT PETS!

Here at Par Sands, we know that many of our owners see their pets as another member of the family, and we wholeheartedly agree. That's why our park is pet-friendly, creating the perfect home-from-home experience, for both you and your four-legged friends.



Lots to do ON - PARK EVERY SINGLE STAY FOR THE WHOLE FAMILY!

PAR BEACH

On our doorstep, the beautiful Par Beach is perfect for walkers, especially those who love to visit Par Sands with their dog as it's one of the few beaches that welcomes dogs all year round.

INDOOR POOL

Our heated indoor swimming pool is the perfect place to take a leisurely dip after a day of exploring the local area, or some early morning lengths before heading out for the day.

PLAY PARK

The mini-owners will enjoy their time on the park just as much as you will with all of the adventures waiting to be had on our play park.

TENNIS COURT, SPORTS COURTS & PUTTING GREEN

Make the most of our outdoor leisure facilities and get competitive and challenge your friends at our tennis courts, sports courts, and putting green.

PAR BEACH CAFÉ

Located right on Par Beach, our very own café is a great spot to sit outside and watch the world go by with a coffee and a cake, or have a relaxed evening meal and sample some of the tasty dishes from our seasonal menu.

[FIND OUT MORE](#)



Subletting your HOLIDAY HOME

HELPING TOWARDS YOUR RUNNING COSTS

When you become a holiday home owner at Par Sands, you will be given the opportunity to join one of our sublet schemes. These are great ways of contributing towards your annual running costs when you're not using your holiday home.

We have two schemes to choose from;

1. PARK LEISURE SUBLET SCHEME

All you need to do is let us know when you wish to use your holiday home, but don't worry if you change your mind, just give us a call and as long as a booking has not already been taken that cannot be reallocated, we would love to see you on-park.

WE'LL TAKE CARE OF THE REST...

We will;

- **Asses your holiday home to determine which of our accommodation grades it fits into.** As a sublet owner, you will be responsible for ensuring your holiday home is maintained to the agreed grade.
- **Let your holiday home out on your behalf.** This includes being featured on our website, being distributed through third parties, and being included in marketing communications.
- **Process the bookings including all pre-arrival information.**
- **Prepare your holiday home for guests, and look after them during their stay.** This includes cleaning* between lettings and meeting any requirements.

2. PRIVATE SUBLET SCHEME

Choosing to privately sublet your holiday home means you will be responsible for your own marketing, booking administration including pre-arrival information, meeting your guest's requirements, and cleaning between stays. We will still ask that your holiday home meets the requirements of our holiday accommodation grades to ensure our holiday guests are receiving the great standards that they expect from Par Sands.

HOW MUCH CAN I EARN?

Whether you choose to sublet through Park Leisure or privately, the more nights you agree to let your holiday home, the more you could earn. Some other factors including the size and age of your holiday home should also be taken into account as some accommodation grades are more in demand. As a family-friendly park, school holiday dates are our busiest times, so agreeing to let during those times will give you more earnings. Pet-friendly accommodation is also very popular at Par Sands, so if you are happy to welcome pets into your holiday home, there is the potential to gain more income too.

If you'd like to find out more about whether subletting could be for you, our on-park team will be happy to answer any further questions you have.

*Cleaning charges will be billed back to the owner.

TOP TIPS FOR SUBLETTING

3 BEDROOM holiday homes are highly sought-after

Demand for **PET-FRIENDLY** accommodation is on the rise

DECKING is particularly desirable

SCHOOL HOLIDAYS are our busiest times for holidays





ENJOY *great cuisine on-park*

AT THE PAR BEACH CAFÉ

You won't struggle to find somewhere to eat around Cornwall, especially with our park having its own restaurant! If you want to look a little further afield there are an abundance of country pubs serving delicious food, award winning restaurants and quaint cafés strewn throughout the picturesque villages close by.

Fancy just relaxing on-park? Our very own Par Beach Café offers fabulous views across Par Beach and beyond, whilst providing delicious food and great service. With a varied menu including both seasonal and traditional dishes, there is something for all tastes including the kids who have their own menu to choose from. Not only that, but your four-legged friend is also welcome in certain areas of Par Beach Café.

[TAKE A LOOK](#)

ENJOY THE local lifestyle

We support our local community, helping out with community projects and charity initiatives close to our hearts and park.

Here are just some of our favourite places to visit...



EDEN PROJECT

The incredible Eden Project is just 3.5 miles away from the park. Nestled in a huge crater, the Eden Project is home to the largest rainforest in captivity. With year-round events, from summer concerts to its contemporary gardens, there's something for all the family to enjoy.



CHARLESTOWN

Go back in time and visit the beautiful, late Georgian working port, located about a mile from St Austell. Beginning as a small fishing harbour, it has now become a popular location for film and television, most recently, the TV series Poldark. Be amazed by the tall rigger ships and visit the Shipwreck and Heritage museum.



MEVAGISSEY

Explore the many gift shops, craft workshops, galleries, cafés and pubs in this endearing old town. With an aquarium, folk museum and old lifeboat house to visit, you won't be short of things to see and do.



CAMEL VALLEY VINEYARDS

Come and relax at this beautiful vineyard and sample some of the award-winning wines either on the peaceful sun terrace overlooking the vineyards or book a Guided Tour or Wine Tasting session. With stunning scenery and a family run business, your afternoon will be a pleasurable one.



POLPERRO HERITAGE COAST AND READYMONEY COVE

If you fancy chilling on a beach and taking in the stunning Cornish scenery then take a trip to Polperro Heritage Coast and Readymoney Cove, near Fowey. Visit one of the many cafés close by, whether you fancy an ice cream in the sun or a hot chocolate on those colder days, and explore its 1700-acres of woodland and walks with plenty for the family to enjoy.



LOST GARDENS OF HELIGAN

These beautiful gardens are not to be missed. A secret garden, lost for decades was rediscovered and restored 30 years ago whilst preserving the memory and commitment of the original workforce, who left to fight in WW1, many of whom sadly never returned. Award-winning gardens with a touching history - definitely something to remember.



LAPPA VALLEY STEAM RAILWAY

In the unique historic setting of the Lappa Valley, you'll find lots of fun things to do and discover – including three separate miniature railways running through this oasis of conservation where wildlife thrives in a protected environment. Running between the stations at Benny Halt and East Wheal Rose, the track runs on a section originally built in 1849 for a minerals railway to serve the mine at East Wheal Rose.



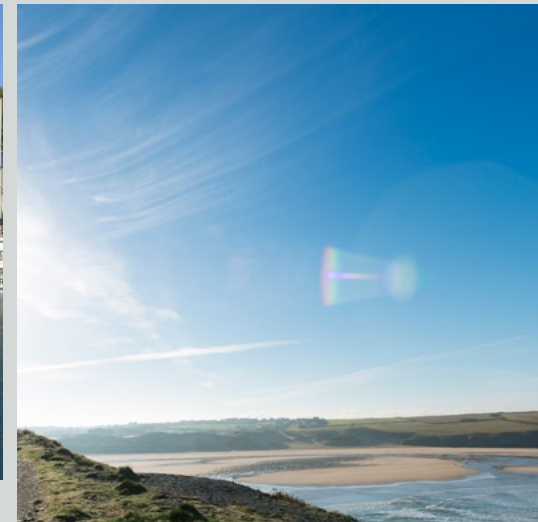
HEALEY'S CORNISH CYDER FARM

Why not visit a real working cider farm at Healey's Cornish Cyder Farm, which produces spirits, wines, Scrumpy, preserves – and, of course, ciders! There's plenty to do, making it a great day out: take a guided tour to learn the art of cider making, join the trailer ride around orchards, go and see the friendly farm yard and visit the first distillery and combined cellars in Cornwall for 300 years.



PADSTOW

Sat at the head of the Camel River is the charming fishing port of Padstow. Surrounded by sandy beaches, and delicious eateries including Rick Stein's famous seafood restaurant, the town is a "must-visit" during your stay.



THE CAMEL TRAIL

The Camel Trail is a 17 mile long route running through some of the most spectacular countryside in the South West. This well-made path is popular with walkers, cyclists and joggers of all levels.



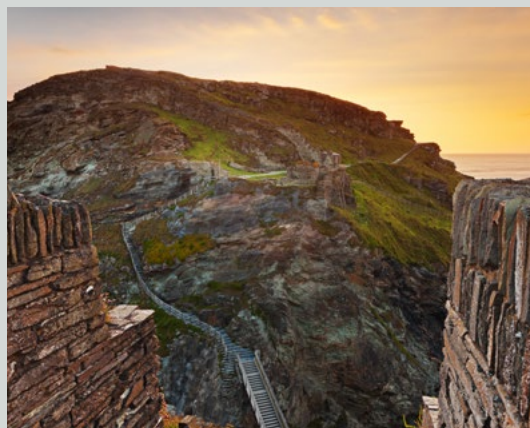
CARNEWAS AND BEDRUTHAN STEPS

Carnewas and Bedruthan Steps is one of the most popular places to visit on the North Cornish coast and is an absolute must-see. Enjoy magnificent walks past picture-postcard coves and windswept headlands – this stretch of the coast path running north of Bedruthan ranks among the prettiest in the South West.



FOWEY

Sitting along the west side of the Fowey Estuary and its spectacular harbour, its narrowing, medieval streets are lined with independent shops selling everything from unusual gifts, to clothing and books.



TINTAGEL CASTLE

Tintagel is a legendary medieval fortification quite unlike any ordinary castle. After climbing the path to the mainland courtyard, a walkway links you to the island where the castle sits. Soak up unforgettable coastline views, historical stories, myths and medieval buildings. What's more, there's also an island garden, beach and café!



HANGLOOSE ADVENTURE AT THE EDEN PROJECT

For the thrill seekers in the family, Hangloose Adventure is sure to be a hit! With 7 different activities on offer you can zipline across the domes of the Eden Project, base jump from the tower or take a ride on the Gravity Swing.

Dine out **EVERY NIGHT...** SOMEWHERE LOCAL

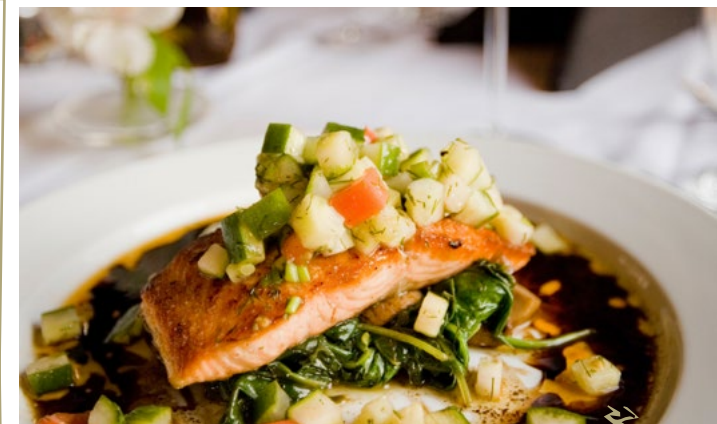
TOGETHER WE ARE
SUPPORTING OUR LOCAL
COMMUNITY



SAM'S ON THE BEACH

14, Polkerris, Par PL24 2TL.

Situated in the Old Fowey Lifeboat House on the water's edge overlooking the bay, Sam's on the Beach provides a truly unique experience. If you're looking for locally sourced produce with great service and ambience, this beach location has all 3 in abundance, and the view's not bad either!



THE BRITANNIA INN AND WAVES RESTAURANT

St Austell Rd, Par PL24 2SL.

This long-established inn is situated between Par and St Austell and is just a five-minute drive from Par Sands. The extensive menu features plenty of Cornish produce with a range of daily specials. If you're looking for a superb Sunday carvery, this restaurant ticks all the boxes.



THE STRAND BISTRO

Fore St, Tywardreath, Par PL24 2QP.

A warm welcome and full stomach awaits you at the Strand Bistro. With many years' experience, this head chef has worked across the world and cooks with some amazing ingredients. With local suppliers, sourcing produce from Tywardreath butchers, Fowey mussels and vegetables from Richards of Par, a meal here is an experience not to be missed.



THE LONGSTORE STEAKS & SEAFOOD

Charlestown Harbour, Charlestown Rd, Saint Austell PL25 3NJ.

Set in a stunning location overlooking the harbour and bay in Charlestown, The Longstore is a bar and restaurant specialising in craft beer, local steaks and seafood. This loft style restaurant has retained much of its Georgian charm and is well worth a visit for a night out to remember.



Life as an owner

WITH PARK LEISURE

Think endless memories of exploring the great outdoors, cosy nights in and fun times with your new friends at your holiday park. Life as an owner offers the best of both worlds; peace and rejuvenation from day to day life and the option to be adventurous and explore your new local hotspots.

A WARM COMMUNITY

Be a part of a wonderful community and relax on-park with friends.

ON YOUR DOORSTEP

Achieve the perfect work-life balance and feel like you're permanently on holiday with a Park Leisure holiday home. Relax and unwind with family and make full use of the on-site facilities, or head out on a road trip and explore local wonders and famous attractions.

EXCLUSIVE PARK LEISURE EVENTS

Coffee mornings and wine-tasting are just some of the events held at our parks throughout the year.

DEDICATED CUSTOMER CARE TEAMS

From the moment you arrive at the park and throughout your ownership, our Customer Care Teams are there to help make your time with us relaxed and enjoyable. Speak to our dedicated Customer Care Team on hand throughout your time at Par Sands.



YOUR NEW leisure lifestyle

IN YOUR DREAM HOLIDAY HOME

5-STAR ACCREDITED PARK

We are a 5-star Visit England award-winning park. Our park is sympathetically designed to protect and enhance the local landscape and wildlife on-park.

OWNER COMMUNITIES

Whether you're looking for a quiet retreat or a home away from home, at Par Sands you'll find our owners at the heart of our community on-park. With a variety of events for you to enjoy, you will soon be meeting your neighbours and creating lasting memories.

OPEN ALL YEAR ROUND

Our 12-month holiday season allows for you to enjoy your holiday home all year round. The only decision you will need to make is whether it's a quick, summer weekend away or a long, relaxing autumn break.

WE ARE PASSIONATE ABOUT PETS

Families are important to us at Par Sands, and because pets can be a big part of them, our park is pet-friendly.

A PART OF THE PARK LEISURE FAMILY

Par Sands is part of the Park Leisure park family. With over 20 years' experience of creating stunning holiday parks, we continue to develop them with our owners in mind.



"Par Sands is the perfect getaway for us - we're only a 45 minute drive from the park so we try to visit every week if we can, and always bring our two dogs. It was really important to us when choosing a park that it welcomed pets, and it's fantastic to have Par Beach on our doorstep, which is also extremely dog-friendly and totally unspoilt - our Springer Spaniels love it! The location is brilliant, we're within easy reach of Mevagissey, Charlestown and St Austell and just a short walk away from all the facilities we need, such as shops and the post office. We're always recommending Par Sands to our friends - the team are so friendly and helpful and always willing to go the extra mile. The grounds are perfectly kept and there's a beautiful wildlife lake on-park. We love eating at Par Beach Café, the food is always delicious and the views of the beach are stunning - it's a bonus that we can take the dogs in, too. We really enjoy attending the owners' events and have made lots of new friends."

"We have been at Par Sands for 6 years and upgraded 4 times. Before we came to the park, we looked at many other parks to suit a variety of budgets but felt Par Sands was clean, well-presented, had lovely grounds and the sales team were really helpful. Every time we have upgraded it was stress free and we couldn't believe how fast we moved into our new holiday home. We find when we are at Par Sands, there is no need to use your car as all facilities needed are around you including shops, takeaways, and fresh groceries. The big bonus for us is that you are right on the beach which is also very dog-friendly. We spend as much time as possible just relaxing at Par Sands and we would recommend it to anyone as the perfect getaway."

What our owners say...

[FIND OUT MORE](#)

WITH 11
stunning parks
ACROSS THE UK
THERE'S SURE TO BE ONE FOR YOU



A HOLIDAY HOME *that's right for you*

FIND THE PERFECT 'HOME AWAY FROM HOME' FOR YOU

At Park Leisure, we're proud to provide a wide range of new and pre-owned holiday homes and lodges. Whether you're looking for your first purchase or simply to upgrade, we're sure you'll find something to suit your taste and budget.



BOOK A VISIT TO VIEW OUR HOLIDAYS HOMES ON-PARK

Park Leisures' trusted suppliers include:



Our new & pre-owned HOLIDAY HOMES

All our holiday homes are spacious and comfortable, full of fantastic features, offering you and your family all the luxuries you'd find at home.

2 bedrooms (sleeping up to 6) or
3 bedrooms (sleeping up to 8)

Measuring up to 14ft wide

Main bathroom, plus en-suite
(on selected models)

Open-plan living & dining areas

Fitted modern kitchen,
some with integrated appliances

Double glazing & central heating
(on selected models)

VIEW OUR HOLIDAY HOMES



Great for families



All images used are for illustrative purposes only

Our LODGES

Pushing the boundaries of holiday home design, you'll find levels of style, comfort and practicality of the finest quality.

2 bedrooms (sleeping up to 6)
or **3 bedrooms** (sleeping up to 8)

Extra spacious,
typically available up to 20ft wide

En-suite, complete with large shower area

Considerable bathroom space
with full size bath options available

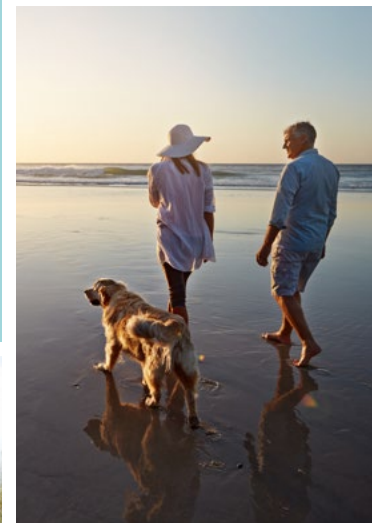
Fully-fitted kitchen,
with branded integrated appliances

Utility room with washer/dryer

VIEW OUR LODGES



Stylish & comfortable



OUR customer service

ENJOY A RELAXING EXPERIENCE ON-PARK



With Park Leisure, you can sit back and relax while we take care of everything for you; from making a reservation at your favourite restaurant to giving your holiday home a full valet*. Each park has a dedicated team member to look after our owners' requirements throughout the year - delivering a bespoke service that gives you a relaxing experience every time you visit. As soon as you drive onto our park, we want you to relax, let us take the stress away and make your visit a luxury leisure experience, your only focus should be you.

RELAX

GETTING READY FOR YOUR ARRIVAL:

- Water and heating turned on, so it's cosy and warm
- Holiday home internally cleaned*

DURING YOUR STAY:

- Restaurant, taxi and local attraction booking service
- Local events and area knowledge
- Local weather
- Laundry service*

THINKING OF YOU WHEN YOU ARE NOT WITH US:

- Weekly peace of mind checks for your holiday home
- External holiday home cleaning*

LET US TAKE CARE OF EVERYTHING

*Extra charge applies.





FREQUENTLY ASKED *questions*

HOW MUCH ARE THE SITE FEES?

Our annual site fees are between £6,045 and £9,745[^].

HOW LONG IS THE SEASON?

Our park benefits from having a 12-month season, meaning you can enjoy all four seasons on-park. Whilst many other holiday parks close for the winter season, you can be sure to enjoy everything from Halloween and Christmas, to New Year and Valentine's Day from the comfort of your holiday home or lodge at our park.

CAN MY FAMILY AND FRIENDS USE MY HOLIDAY HOME?

The best thing about getting a holiday home, is the sense of community it brings with it. Not only will you enjoy meeting and socialising with your new neighbours, but you can entertain family and friends from your new home too. Most of our holiday homes are either 2 or 3 bedrooms, so family and friends can stay with you, or if you're feeling generous they're able to stay in your holiday home when you're away, too.

HOW MUCH ARE HOLIDAY HOMES?

Our pre-owned holiday homes start from £34,995[^]

Our new holiday homes start from £49,995[^]

Finance options are available[^]

Monthly payment £515.29 x 120 months @ 6.9% APR	
REPRESENTATIVE EXAMPLE BASED ON 2020 CARNABY ASHDALE 30X12 - 2 BEDROOM	
Cash price £49,995.00	Monthly payments 119 x £515.29
Customer deposit £5,000.00	Final payment £515.29
Total amount of credit £44,995.00	Total amount payable £66,834.80
Purchase fee - inc. in final payment £10.00	Representative APR 6.9% APR
Duration of agreement 120 months	Interest rate (fixed) 6.69%

OUR ON-PARK TEAM WILL BE HAPPY TO ANSWER ANY FURTHER QUESTIONS YOU HAVE.

*Park Leisure 2000 Ltd (trading as Park Leisure Holiday Homes) is authorised by the FCA with limited permissions to conduct certain credit related activity, Park Leisure 2000 Ltd are a credit broker, not a lender. Finance illustration is based on a 2020 Carnaby Ashdale 30ft x 12ft, 2 bedroom holiday home. Finance illustration provided by Blackhorse. Finance can be taken over 24-120 months. Park Leisure is an intermediary and can introduce you to a limited number of lenders who provide funding. We may receive commission or other benefits for introducing you to such lenders. Finance is subject to status, available to applicants aged 21 and over, residing in the UK. Terms and conditions apply. As part of the application process, a creditworthiness assessment may be conducted by the lender which may involve a Credit Reference Agency check. Your holiday home may be repossessed if you do not keep up repayments on your credit agreement. This offer is not available as part-exchange. Park Leisure 2000 Ltd is authorised and regulated by the Financial Conduct Authority (Limited Permissions Firm Reference Number 668081). Registered in England. Registered No: 03352005. Registered Office: Unit 1, Tudor Court, York Business Park, Poppleton York, YO26 6RS. [^]Terms & Conditions apply: Visit www.parkleisure.co.uk/terms-and-conditions



PAR SANDS

Coastal Holiday Park

Par Sands Coastal Holiday Park
Par Beach, Par, Cornwall PL24 2AS

TEL: 01726 812 868

WWW.PARKLEISURE.CO.UK/PAR-SANDS



VisitEngland™

FIND OUT MORE ABOUT PAR SANDS



TAKE A VIRTUAL TOUR
www.parkleisure.co.uk/virtual-tour



BOOK A PRIVATE APPOINTMENT
www.parkleisure.co.uk/personal-appointment



DROP US AN EMAIL
Robert.Bates@parkleisure.co.uk

FIND OUT MORE ABOUT OUR PARKS

CHANTRY, YORKSHIRE DALES & LITTONDALE - NORTH YORKSHIRE / AMBLE LINKS - NORTHUMBERLAND / RIBBLE VALLEY - LANCASHIRE
PLAS COCH & BRYNTEG - NORTH WALES / MALVERN VIEW - HEREFORDSHIRE / PAR SANDS, OYSTER BAY & PENTIRE - CORNWALL