



**OYSTER BAY**  
Coastal & Country Retreat

# Escape to...

**OYSTER BAY** COASTAL & COUNTRY RETREAT



**ENJOY A  
LIFETIME OF  
HOLIDAYS**

**BOOK A VISIT  
TO OUR PARK**



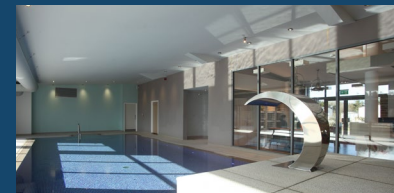
**ENJOY YOUR HOLIDAY  
HOME 365 DAYS A YEAR**



**SOAK UP THE BREATHTAKING  
COUNTRYSIDE VIEWS ON-PARK**



**EXPLORE THE SPECTACULAR  
CORNISH COASTLINE**



**UNWIND IN OUR POOL, OR TRY  
YOUR HAND AT WATER SPORTS**



**FIND ADVENTURE WITH  
OUR PLAY PARK, TENNIS  
COURT & PUTTING GREEN**

[www.parkleisure.co.uk/oyster-bay](http://www.parkleisure.co.uk/oyster-bay)

# WELCOME TO a lifetime of holidays WITH YOUR OWN HOLIDAY HOME ON-PARK

## CONTENTS

|  |         |
|--|---------|
| WELCOME TO OYSTER BAY.....               | 3       |
| A LIFETIME OF HOLIDAYS .....             | 4 & 5   |
| WHY YOU'LL LOVE OYSTER BAY .....         | 6       |
| CARN MOOR - OUR LATEST DEVELOPMENT ..... | 7       |
| LOTS TO DO ON-PARK .....                 | 8       |
| FIND YOUR ADVENTURE .....                | 9       |
| ENJOY THE LOCAL LIFESTYLE .....          | 10 & 11 |
| DINE OUT SOMEWHERE LOCAL .....           | 12      |
| YOUR NEW LEISURE LIFESTYLE .....         | 13      |
| A HOLIDAY HOME FOR YOU .....             | 14 & 15 |
| OUR CUSTOMER SERVICE .....               | 16      |
| LIFE AS AN OWNER .....                   | 17      |
| 11 STUNNING LOCATIONS .....              | 18      |
| FREQUENTLY ASKED QUESTIONS .....         | 19      |
| CONTACT US .....                         | 20      |



Just 20 minutes from Newquay Airport



# Welcome to OYSTER BAY

CORNWALL

If you are seeking peace and tranquillity, or the opportunity for adventure, Oyster Bay is the perfect place for you. Set within the beautiful North Cornish countryside and close to many of Cornwall's most beautiful beaches, Oyster Bay offers owners first-class facilities as well as some of the most luxurious holiday homes and lodges seen in Cornwall and beyond.

Oyster Bay represents the next level of holiday home ownership. It sits in the idyllic village of Goonhavern, just to the east of Perranporth and the spectacular Cornish coastline, where water sports enthusiasts thrive, meaning there really is nothing stopping you from making a splash.

## PET-FRIENDLY

...bring the whole family.

Oyster Bay is a pet-friendly park meaning the whole family are welcome.





# A lifetime of holidays AT **OYSTER BAY**

WELCOME TO YOUR NEW LEISURE LIFESTYLE

After a busy day of exploring the local area, it's time to relax and unwind at Oyster Bay. So if you're seeking rest and relaxation, take a leisurely swim in the heated indoor pool, or visit one of the nearby restaurants for some delicious local cuisine and a well-deserved drink.

There's an unrivalled amount of adventure to be found at Oyster Bay. From our on-site putting green and tennis court, to nearby water sports opportunities, you'll be spoilt for choice. Whether you fancy yourself as a keen surfer or want to give windsurfing a go, there's plenty of adrenaline-fueled activities to enjoy during your stay. Or, if you prefer a gentler pace of life, you can take part in one of our land-based organised activities and take a stroll along the scenic Cornish coastline with our expert guide.





# All to enjoy

## AT OYSTER BAY

5-star accredited holiday park

Open all year round

Pet-friendly - the whole family's welcome

Indoor pool

Owners' Lounge

Children's play park

Access to organised water sports, coastal walks, and other activities

Wet suit drying facility

Tennis court, putting green & table tennis



Fun for all the family

Visit the local area



Enjoy the outdoors



Relax & unwind



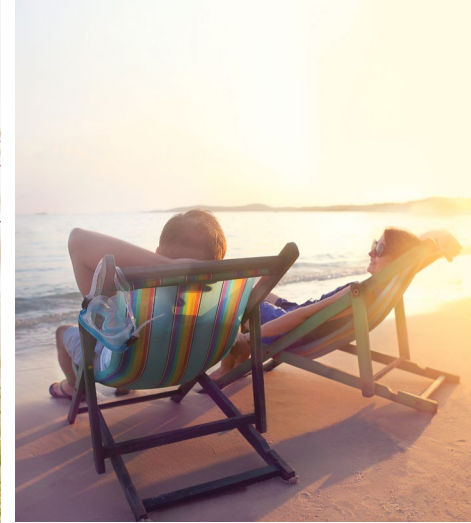
# Why you'll love OYSTER BAY

## ENJOY YOUR HOLIDAY HOME 365 DAYS A YEAR

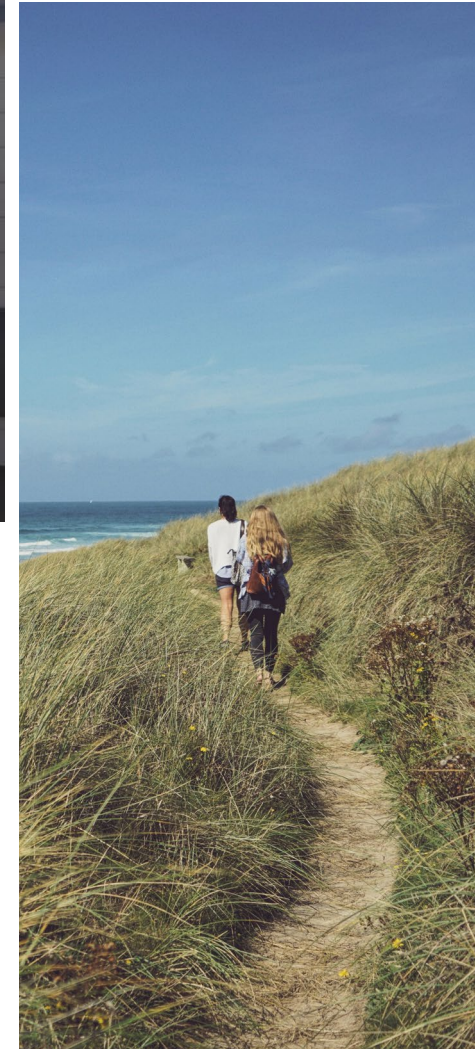
While other parks are closed, we are thriving throughout all four seasons. So, whether you're seeking a peaceful weekend break, or a relaxing longer stay, we'll be ready to welcome you come rain or shine.

## WE ARE PASSIONATE ABOUT PETS!

Here at Oyster Bay, we know that many of our owners see their pets as another member of the family, and we wholeheartedly agree. That's why our park is pet-friendly, creating the perfect home-from-home experience, for both you and your four-legged friends.







# Our latest development **CARN MOOR**

TAKE A LOOK

## YOUR *perfect* LOCATION ON-PARK

Our latest holiday home development at Oyster Bay is the perfect spot to escape to week after week. This exclusive gated development boasts beautifully landscaped grounds along with breathtaking views of the nearby Carn Moor Nature Reserve and surrounding countryside.





# Lots to do ON - PARK EVERY SINGLE STAY FOR THE WHOLE FAMILY!

## INDOOR POOL

Our stunning indoor swimming pool is the perfect place to take a leisurely dip after a day of exploring the local area, or some early morning lengths before heading out for the day.

## OWNERS' LOUNGE

Sit back and relax in our on-park Owners' Lounge with an outside to our sun deck to make the most of the beautiful Cornish sunshine. This comfortable setting is an ideal place to enjoy a complimentary hot drink, and catch up with your new friends all year round.

## PLAY PARK

The mini-owners will enjoy their time on the park just as much as you, with lots of adventures waiting to be had on our play park and outdoor activities area.

## TENNIS COURT, PUTTING GREEN & TABLE TENNIS

Get competitive and challenge your friends at our tennis court, putting green and table tennis area.

## WATER SPORTS & ACTIVITIES

Lois, our on-park expert is on hand with a calendar of events and activities for all abilities including, surfing, paddleboarding and bodyboarding, plus a range of coastal and country walks for you to be able to explore the local area with your fellow owners.

[FIND OUT MORE](#)





## OFF-PARK ACTIVITIES

# find your adventure

## WATER SPORTS AND MORE!



“Hi I’m Lois,  
Water Sports and  
Activity Co-ordinator  
at Oyster Bay”

Take the plunge into a world of excitement, fun and adventure with a combination of water-based activities all year round, ensuring your family are happy and entertained throughout your stay at Oyster Bay.

Located close to the water’s edge and surrounded by stunning natural beauty, Oyster Bay offers a range of activities for all ages and capabilities. We even have our own on-park instructor, Lois, to help you learn.

### **SURFING**

Whether you’re looking to try it for the first time, or you already own your wetsuit and board, taking to the waves at Perranporth Beach is a great way to spend a day.

### **PADDLEBOARDING**

Less intense than surfing, not only is paddleboarding lots of fun, it’s also a great workout and is easy to learn too!

### **BODYBOARDING**

Bodyboarding is a great activity for the little ones to try, or those that don’t feel too confident in the waves or standing on a surfboard.

### **OPEN WATER SWIMMING**

Swimming in the open water is a great way to feel connected to your surroundings and to enjoy the wonderful waters that Cornwall is famous for.

### **COASTAL & COUNTRY WALKS**

If you prefer to keep your feet firmly on land, then you can join your fellow owners for one of our coastal or country walks. It’s a great way to get to know the local area, and to explore all the hidden gems that are undiscovered by tourists.

**FIND OUT MORE**



# ENJOY THE local lifestyle

We support our local community, helping out with community projects and charity initiatives close to our hearts and park.

Here are just some of our favourite places to visit...



## TRURO SIGHTSEEING/SHOPPING/CATHEDRAL

Whether it's sightseeing or shopping that tickles your fancy, you can do it all in Truro. Just 15 minutes drive from the park, Truro has all the fantastic high street retailers, a historic cathedral and an abundance of bars and restaurants if you fancy a night out.

## PERRANPORTH BEACH

One of Cornwall's most famous beaches, Perranporth is a great place for the whole family to enjoy. From water sports to relaxation, the golden sands of this beach are a great backdrop.



## LANHYDROCK

This National Trust site is home to a beautiful Victorian country house and estate. Inside be taken back in time and see how life was for both the family, and their servants with a glimpse into life 'below stairs'. Outside you can take a stroll around the extensive gardens with its year-round floral displays and walk through the ancient woodlands.

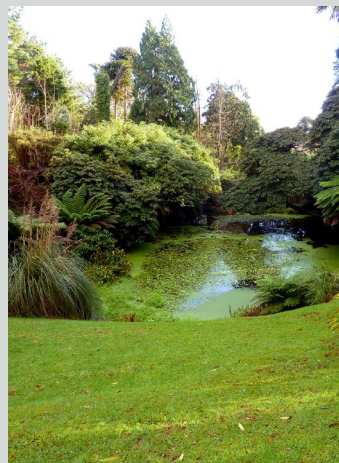


## FLAMBARD'S THEME PARK

Flambards has something for everyone with their array of awesome rides for the thrill seekers and, for those who love history, there's the award-winning indoor attractions where you can step back in time with a life-size Victorian Village or experience Britain in the Blitz.

## THE LOST GARDENS OF HELIGAN

One of the most spectacular botanical gardens on offer, The Lost Gardens of Heligan were fully restored in the 1990s. Steeped in history, this all-season garden takes inspiration from the 19th century with a breathtaking variety of styles and designs on offer.



## PORT ISAAC

Made famous by the TV series "Doc Martin", lose yourself in the wonderful offerings of this amazing little harbour town, which is known as an Area of Outstanding Natural Beauty. Beginning as a small fishing village, it is now a popular location for film and television and is becoming a bit of a foodie destination too.





### FISTRAL BEACH

At Oyster Bay you're just 15 minutes from Newquay's famous Fistral Beach - "The Home of British Surfing". Whether you're into surfing or just prefer watching from the beach with an ice cream, this is a real gem of Cornwall.



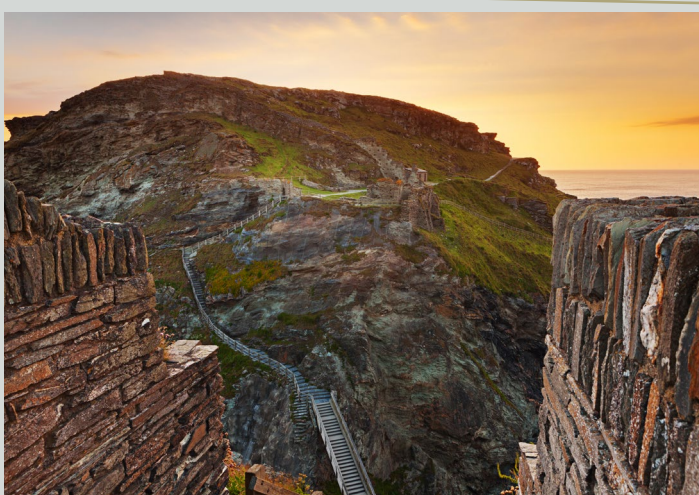
### EDEN PROJECT

The incredible Eden Project is just half an hour away from the park. Nestled in a huge crater, the Eden Project is home to the largest rainforest in captivity. With year-round events, from summer concerts to its contemporary gardens, there's something for all the family to enjoy.



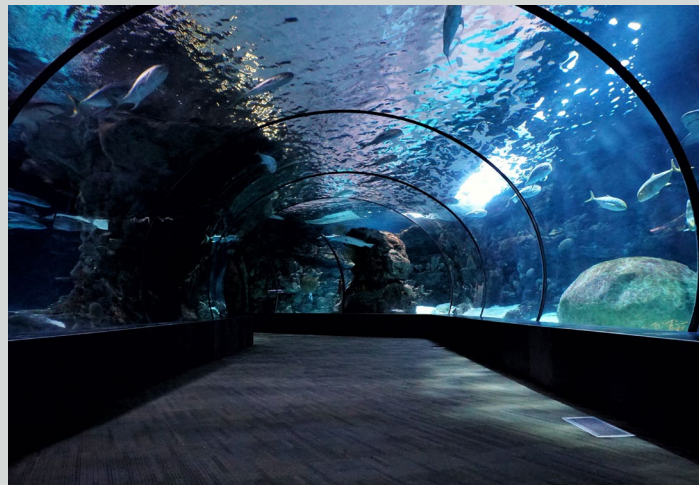
### CARNEWAS AND BEDRUTHAN STEPS

One of the most iconic Cornish landmarks, this National Trust site boasts gorgeous scenery - coves, windswept headlands, and views as far as the eye can see. Take care on the famous steep, narrow steps that lead down to Bedruthan beach - but prepare to be greeted by a fantastic reward.



### TINTAGEL CASTLE

A legendary medieval fortification quite unlike any ordinary castle. After climbing the path to the mainland courtyard, a walkway links you to the island where the castle sits. Soak up unforgettable coastline views, historical stories, myths and medieval buildings. What's more, there's also an island garden, beach and café!



### BLUE REEF AQUARIUM

Blue Reef is part of an exciting new generation of aquarium attractions designed to inspire deeper understanding and appreciation of the natural world. On a trip to the Blue Reef Aquarium you will see all the fantastic creatures that live in our seas and oceans; the displays take you on an undersea tour showing you everything from the British coastline to faraway tropical reefs and lots more in between.



### THE CAMEL TRAIL

The Camel Trail is a 17 mile long cycle way running through some of the most spectacular countryside in the South West. This well-made path is popular with walkers, cyclists and joggers of all levels.



# Dine out **EVERY NIGHT...** SOMEWHERE LOCAL

TOGETHER WE ARE  
SUPPORTING OUR LOCAL  
COMMUNITY



## **WATERGATE BAY HOTEL**

*On The Beach, Watergate Bay TR8 4AA*

With a selection of restaurants to choose from inside the hotel, you can decide whether you're looking for an informal lunch, or a 3 course meal for that special occasion. Wherever you decide to dine, you'll enjoy local Cornish produce with a global influence.



## **LEWINNICK LODGE**

*Pentire Headland, Newquay TR7 1QD*

Situated on the spectacular Pentire Headland, the Lewinnick Lodge is steps away from Newquay's Fistral Beach. The restaurant prides itself on using the best local ingredients to create classic dishes that reflect the beach life on their doorstep.



## **TASTE**

*40 Vicarage Road, St Agnes TR5 0TF*

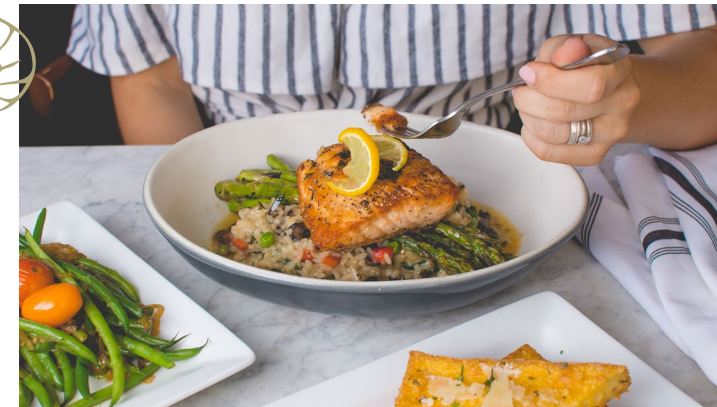
Rated the number one restaurant in St Agnes, it's easy to see why. Their relaxed, intimate atmosphere makes for a unique dining experience, along with serving freshly caught seafood as their specialty with popular dishes including lobster thermidor, Thai mussels, and homemade fishcakes.



## **THE BOLINGEY INN**

*Penwartha Rd, Perranporth TR6 0DH*

The Bolingey Inn oozes old world charm inside and out and the setting for the Inn is just beautiful within the village of Bolingey. Whether you have just enjoyed a round of golf at the Perranporth Golf Club or a scenic flight over the beautiful Cornish coastline from the Perranporth Aerodrome, this Cornish Inn is the perfect place to stop of for a refreshing drink or meal.



## **THE FISH HOUSE**

*5 International Surfing Centre, Headland Rd, Newquay TR7 1EW*

The location of The Fish House can't be beaten. Situated on Fistral Beach, and just a stone's throw from the sea, there's no disputing the freshness of the seafood used here. They use the best seasonal ingredients to create rustic dishes with authentic flavours, and what better way to finish the day than watching the sunset while enjoying some delicious food.



# YOUR NEW Leisure lifestyle IN YOUR DREAM HOLIDAY HOME

## 5-STAR ACCREDITED PARK

We are a 5-star Visit England award-winning park. Our park is sympathetically designed to protect and enhance the local landscape and wildlife on-park.

## OWNER COMMUNITIES

Whether you're looking for a quiet retreat or a home away from home, at Oyster Bay you'll find our owners at the heart of our community on-park. With a variety of events for you to enjoy, you will soon be meeting your neighbours and creating lasting memories.

## OPEN ALL YEAR ROUND

Our 12-month holiday season allows for you to enjoy your holiday home all year round. The only decision you will need to make is whether it's a quick, summer weekend away or a long, relaxing autumn break.

## WE ARE PASSIONATE ABOUT PETS

Families are important to us at Oyster Bay, and because pets can be a big part of them, our park is pet-friendly.

## A PART OF THE PARK LEISURE FAMILY

Oyster Bay is part of the Park Leisure park family. With over 20 years' experience of creating stunning holiday parks, we continue to develop them with our owners in mind.



"I often go along on the coastal and woodland walks offered by Lois. From this I have explored some of the most amazing areas of Cornwall. I love the fact we get to stop for a coffee and cake and it is also a great way to make friends. The walks are also a fantastic way for you see and get to know some the of the amazing areas close to Oyster Bay as Lois always has some insider/local knowledge!"

"When you look at everything you have on-site such as the great service, the Owners' Lounge, swimming pool, tennis court and kids' playground, it's quite an overall package for such a small park."

"One of the main reasons for buying at Oyster Bay was the activity programme offered, that we thought would be great for our two children. Since being here, they have learnt to surf and paddleboard. Not only have they learnt new skills but the importance of being in and around the ocean. Lois, the Water Sports Coordinator, has also been imperative in helping build confidence with the children and has given them skills for life. All in all, we find the activities and water sports offered to be fantastic and have helped make some amazing memories we will never forget. Lois has helped in so many ways and is a great asset to Oyster Bay."

# What our owners say...



[FIND OUT MORE](#)



# A HOLIDAY HOME *that's right for you*

FIND THE PERFECT 'HOME AWAY FROM HOME' FOR YOU

At Park Leisure, we're proud to provide a wide range of new and pre-owned holiday homes and lodges. Whether you're looking for your first purchase or simply to upgrade, we're sure you'll find something to suit your taste and budget.



**BOOK A VISIT TO VIEW OUR HOLIDAYS HOMES ON-PARK**

Park Leisures' trusted suppliers include:





## Our HOLIDAY HOMES

All our holiday homes are spacious and comfortable, full of fantastic features, offering you and your family all the luxuries you'd find at home.

**2 bedrooms** (sleeping up to 6) or  
**3 bedrooms** (sleeping up to 8)

**Measuring up to 14ft wide**

**Main bathroom, plus en-suite**  
(on selected models)

**Open-plan living & dining areas**

**Fitted modern kitchen,**  
some with integrated appliances

**Double glazing & central heating**  
(on selected models)

[VIEW OUR HOLIDAY HOMES](#)

*Great for families*



All images used are for illustrative purposes only

## Our LODGES

Pushing the boundaries of holiday home design, you'll find levels of style, comfort and practicality of the finest quality.

**2 bedrooms** (sleeping up to 6)  
or **3 bedrooms** (sleeping up to 8)

**Extra spacious,**  
typically available up to 20ft wide

**En-suite,** complete with large shower area

**Considerable bathroom space**  
with full size bath options available

**Fully-fitted kitchen,**  
with branded integrated appliances

**Utility room** with washer/dryer

[VIEW OUR LODGES](#)

*Stylish & comfortable*



## Our SUPER LODGES

Exquisitely designed and packed with stunning details, you'll find sophistication and style echoed throughout. Luxury holiday home living at its finest!

**2 bedrooms** (sleeping up to 6),  
or **3 bedrooms** (sleeping up to 8),

**Extra spacious,**  
typically available up to 22ft wide

**Built-in music system** option available

**Walk-in wardrobes**

**King size bed**

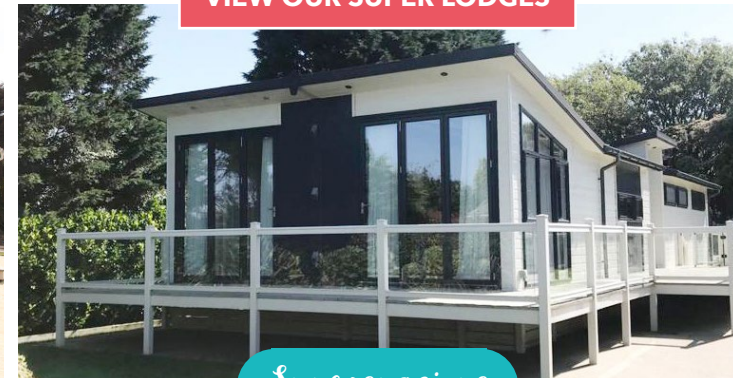
**Spacious second, and third bedrooms**

**Fully-fitted kitchen,**  
with branded integrated appliances

**Utility room** with washer/dryer

[VIEW OUR SUPER LODGES](#)

*Super spacious*





# OUR customer service

ENJOY A RELAXING EXPERIENCE ON-PARK



With Park Leisure, you can sit back and relax while we take care of everything for you; from making a reservation at your favourite restaurant to giving your holiday home a full valet\*. Each park has a dedicated team member to look after our owners' requirements throughout the year - delivering a bespoke service that gives you a relaxing experience every time you visit. As soon as you drive onto our park, we want you to relax, let us take the stress away and make your visit a luxury leisure experience, your only focus should be you.

## RELAX

### GETTING READY FOR YOUR ARRIVAL:

- Water and heating turned on, so it's cosy and warm
- Holiday home internally cleaned\*

### DURING YOUR STAY:

- Restaurant, taxi and local attraction booking service
- Local events and area knowledge
- Local weather
- Laundry service\*

### THINKING OF YOU WHEN YOU ARE NOT WITH US:

- Weekly peace of mind checks for your holiday home
- External holiday home cleaning\*

LET US TAKE CARE OF EVERYTHING

\*Extra charge applies.







# Life as an owner

## WITH PARK LEISURE

Think endless memories of exploring the great outdoors, cosy nights in and fun times with your new friends at your holiday park. Life as an owner offers the best of both worlds; peace and rejuvenation from day to day life and the option to be adventurous and explore your new local hotspots.

### A WARM COMMUNITY

Be a part of a wonderful community and relax on-park with friends.

### ON YOUR DOORSTEP

Achieve the perfect work-life balance and feel like you're permanently on holiday with a Park Leisure holiday home. Relax and unwind with family and make full use of the on-site facilities, or head out on a road trip and explore local wonders and famous attractions.

### EXCLUSIVE PARK LEISURE EVENTS

Coffee mornings and wine-tasting are just some of the events held at our parks throughout the year.

### DEDICATED CUSTOMER CARE TEAMS

From the moment you arrive at the park and throughout your ownership, our Customer Care Teams are there to help make your time with us relaxed and enjoyable. Speak to our dedicated Customer Care Team on hand throughout your time at Oyster Bay.





WITH 11  
*stunning parks*  
ACROSS THE UK  
THERE'S SURE TO BE ONE FOR YOU







# FREQUENTLY ASKED *questions*

## HOW MUCH ARE THE SITE FEES?

Our annual site fees are between £5,795 and £7,799^.

## HOW LONG IS THE SEASON?

Our park benefits from having a 12-month season, meaning you can enjoy all four seasons on-park. Whilst many other holiday parks close for the winter season, you can be sure to enjoy everything from Halloween and Christmas, to New Year and Valentine's Day from the comfort of your holiday home or lodge at our park.

## CAN MY FAMILY AND FRIENDS USE MY HOLIDAY HOME?

The best thing about getting a holiday home, is the sense of community it brings with it. Not only will you enjoy meeting and socialising with your new neighbours, but you can entertain family and friends from your new home too. Most of our holiday homes are either 2 or 3 bedrooms, so family and friends can stay with you, or if you're feeling generous they're able to stay in your holiday home when you're away, too.

## HOW MUCH ARE HOLIDAY HOMES?

Our holiday homes start from £59,950^

Finance options are available^

| Monthly payment £617.90 x 120 months @ 6.9% APR                       |   |
|---|---|
| REPRESENTATIVE EXAMPLE BASED ON<br>2020 ABI RYEDALE 36X12 - 2 BEDROOM |   |
| Cash price<br><b>£59,950.00</b>                                       | Monthly payments<br><b>119 x £617.90</b>  |
| Customer deposit<br><b>£5,995.00</b>                                  | Final payment<br><b>£617.90</b>           |
| Total amount of credit<br><b>£53,955.00</b>                           | Total amount payable<br><b>£80,143.00</b> |
| Purchase fee - inc. in final payment<br><b>£10.00</b>                 | Representative APR<br><b>6.9% APR</b>     |
| Duration of agreement<br><b>120 months</b>                            | Interest rate (fixed)<br><b>6.69%</b>     |

**OUR ON-PARK TEAM WILL BE HAPPY TO ANSWER ANY FURTHER QUESTIONS YOU HAVE.**

\*Park Leisure 2000 Ltd (trading as Park Leisure Holiday Homes) is authorised by the FCA with limited permissions to conduct certain credit related activity, Park Leisure 2000 Ltd are a credit broker, not a lender. Finance illustration is based on a 2020 ABI Ryedale 36ft x 12ft, 2 bedroom holiday home. Finance illustration provided by Blackhorse. Finance can be taken over 24-120 months. Park Leisure is an intermediary and can introduce you to a limited number of lenders who provide funding. We may receive commission or other benefits for introducing you to such lenders. Finance is subject to status, available to applicants aged 21 and over, residing in the UK. Terms and conditions apply. As part of the application process, a creditworthiness assessment may be conducted by the lender which may involve a Credit Reference Agency check. Your holiday home may be repossessed if you do not keep up repayments on your credit agreement. This offer is not available as part-exchange. Park Leisure 2000 Ltd is authorised and regulated by the Financial Conduct Authority (Limited Permissions Firm Reference Number 668081). Registered in England. Registered No: 03352005. Registered Office: Unit 1, Tudor Court, York Business Park, Poppleton York, YO26 6RS. ^Terms & Conditions apply: Visit [www.parkleisure.co.uk/terms-and-conditions](http://www.parkleisure.co.uk/terms-and-conditions)





## OYSTER BAY

Coastal & Country Retreat

Oyster Bay Coastal & Country Retreat  
Halt Road, Goonhavern, TR4 9QE

**TEL: 01872 575 940**

[WWW.PARKLEISURE.CO.UK/OYSTER-BAY](http://WWW.PARKLEISURE.CO.UK/OYSTER-BAY)



VisitEngland



★★★★★  
HOLIDAY PARK

## FIND OUT MORE ABOUT OYSTER BAY



**BOOK A PRIVATE APPOINTMENT**

[www.parkleisure.co.uk/personal-appointment](http://www.parkleisure.co.uk/personal-appointment)



**TAKE A VIRTUAL TOUR**

[www.parkleisure.co.uk/virtual-tour](http://www.parkleisure.co.uk/virtual-tour)



**DROP US AN EMAIL**

[Deborah.Vant@parkleisure.co.uk](mailto:Deborah.Vant@parkleisure.co.uk)



**SEND US A MESSAGE**

[07710 804 775](tel:07710804775)

### FIND OUT MORE ABOUT OUR PARKS

CHANTRY, YORKSHIRE DALES & LITTONDALE - NORTH YORKSHIRE / AMBLE LINKS - NORTHUMBERLAND / RIBBLE VALLEY - LANCASHIRE  
PLAS COCH & BRYNTEG - NORTH WALES / MALVERN VIEW - HEREFORDSHIRE / PAR SANDS, OYSTER BAY & PENTIRE - CORNWALL