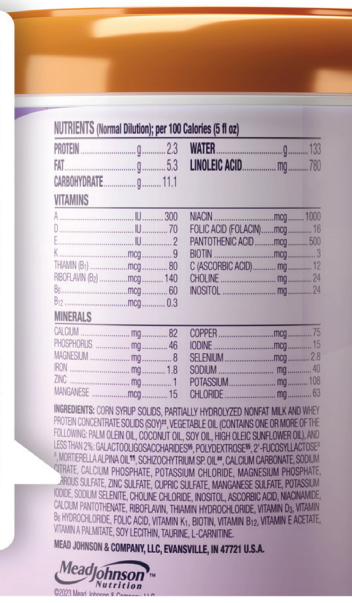


# Enfamil®

Ingredients are important to you, your patients, and to Enfamil®. As your trusted partner, we are being transparent about our ingredient list.

## Enfamil® NeuroPro® Gentlelease® Powder

**INGREDIENTS:** CORN SYRUP SOLIDS, PARTIALLY HYDROLYZED NONFAT MILK AND WHEY PROTEIN CONCENTRATE SOLIDS (SOY), VEGETABLE OIL (CONTAINS ONE OR MORE OF THE FOLLOWING: PALM OLEIN OIL, COCONUT OIL, SOY OIL, HIGH OLEIC SUNFLOWER OIL), AND LESS THAN 2% GALACTOOLIGOSACCHARIDES, POLYDEXTROSE, 2'-FUCOSYLLACTOSE, MORTIERELLA ALPINA OIL, SCHIZOCHYTRIUM SP. OIL, CALCIUM CARBONATE, SODIUM CITRATE, CALCIUM PHOSPHATE, POTASSIUM CHLORIDE, MAGNESIUM PHOSPHATE, FERROUS SULFATE, ZINC SULFATE, CUPRIC SULFATE, MANGANESE SULFATE, POTASSIUM IODIDE, SODIUM SELENITE, CHOLINE CHLORIDE, INOSITOL, ASCORBIC ACID, NIACINAMIDE, CALCIUM PANTOTHENATE, RIBOFLAVIN, THIAMIN HYDROCHLORIDE, VITAMIN D3, VITAMIN B6 HYDROCHLORIDE, FOLIC ACID, VITAMIN K1, BIOTIN, VITAMIN B12, VITAMIN E ACETATE, VITAMIN A PALMITATE, SOY LECITHIN, TAURINE, L-CARNITINE.



**NUTRIENTS (Normal Dilution); per 100 Calories (5 fl oz)**

PROTEIN	g 2.3	WATER	g 133
FAT	g 5.3	LINOLEIC ACID	mg 780
CARBOHYDRATE	g 11.1		
<b>VITAMINS</b>			
A	IU 300	NIACIN	mcg 1000
D	IU 70	FOLIC ACID (FOLACIN)	mcg 16
E	IU 2	PANTOTHENIC ACID	mcg 500
K	mcg 9	BIOTIN	mcg 3
THIAMIN (B1)	mcg 80	C (ASCORBIC ACID)	mg 12
RIBOFLAVIN (B2)	mcg 140	CHOLINE	mg 24
B6	mcg 60	INOSITOL	mg 24
B12	mcg 0.3		
<b>MINERALS</b>			
CALCIUM	mg 82	COPPER	mcg 75
PHOSPHORUS	mg 46	IODINE	mcg 15
MAGNESIUM	mg 9	SELENIUM	mcg 2.9
IRON	mg 1.8	SODIUM	mg 40
ZINC	mg 1	POTASSIUM	mg 108
MANGANESE	mcg 15	CHLORIDE	mg 63

**CORN SYRUP SOLIDS:**

An easily digestible source of carbohydrates for infants with developing digestive systems.

**PARTIALLY HYDROLYZED NONFAT MILK & WHEY PROTEIN CONCENTRATE:**

Proteins that are derived from milk and soy. They have important amino acids to support growth and development.

**PLANT-BASED OILS:**

Palm olein oil, coconut oil, soy oil, and high oleic sunflower oil have important fats to support infant growth and development.

**PREBIOTIC BLEND:**

Enfamil NeuroPro Gentlelease now has a clinically tested blend of two prebiotics known as polydextrose (PDX) and galactooligosaccharides (GOS).

**2'-FUCOSYLLACTOSE:**

A Human Milk Oligosaccharide (HMO) with prebiotic properties, supporting gut bacteria growth and the immune system.

**MORTIERELLA ALPINA OIL & SCHIZOCHYTRIUM SP. OIL:**

Sources of DHA and ARA, important for brain and eye development.

**CALCIUM CARBONATE:**

A source of calcium to support bone health.

**SODIUM CITRATE:**

Source of sodium, regulates pH, acts as a buffer.

**ESSENTIAL MINERALS:**

Essential minerals to support bone development, nerve function, and cellular activities.

**CHOLINE CHLORIDE & INOSITOL:**

Important nutrients to support brain development and overall growth.

**ESSENTIAL VITAMINS:**

Essential to support bone health and overall growth.

**TAURINE & L-CARNITINE:**

Amino acids play roles in central nervous system development and energy metabolism.

### Enfamil® NeuroPro® Gentlelease® Powder

All-in-one digestive comfort designed for easing fussiness, crying, gas and infrequent spit-up\* in 24 hours<sup>1</sup> and promotes soft stools.

\* Infrequent spit-up characterized as generally less than 5x per day.

1. Berseth CL, Johnston WH, Stolz SI, et al. Clinical response to 2 commonly used switch formulas occurs within 1 day. *Clin Pediatr (Phila)*. 2009;48:58-65.



# Enfamil<sup>®</sup>

Ingredients are important to you, your patients, and to Enfamil<sup>®</sup>.  
As your trusted partner, we are being transparent about our ingredient list.

## Enfamil<sup>®</sup> NeuroPro<sup>®</sup> Gentlese<sup>®</sup> Ready To Use

**INGREDIENTS:** WATER, CORN SYRUP SOLIDS, PARTIALLY HYDROLYZED NONFAT MILK AND WHEY PROTEIN CONCENTRATE SOLIDS (SOY), VEGETABLE OIL (CONTAINS ONE OR MORE OF THE FOLLOWING: PALM OLEIN OIL, COCONUT OIL, SOY OIL, HIGH OLEIC SUNFLOWER OIL), AND LESS THAN 2%: GALACTOOLIGOSACCHARIDES, POLYDEXTROSE, 2'-FUCOSYLLACTOSE, MORTIERELLA ALPINA OIL, SCHIZOCHYTRIUM SP. OIL, RICE STARCH, CALCIUM PHOSPHATE, CALCIUM CARBONATE, MAGNESIUM PHOSPHATE, POTASSIUM CHLORIDE, POTASSIUM CITRATE, SODIUM CHLORIDE, FERROUS SULFATE, ZINC SULFATE, CUPRIC SULFATE, MANGANESE SULFATE, POTASSIUM IODIDE, SODIUM SELENITE, ASCORBIC ACID, VITAMIN E ACETATE, NIACINAMIDE, CALCIUM PANTOTHENATE, VITAMIN A PALMITATE, RIBOFLAVIN, THIAMIN HYDROCHLORIDE, VITAMIN B6 HYDROCHLORIDE, FOLIC ACID, VITAMIN K1, BIOTIN, VITAMIN D3, VITAMIN B12, DIACETYL TARTARIC ACID ESTER OF MONO- AND DIGLYCERIDES (DATEM), CHOLINE CHLORIDE, INOSITOL, SOY LECITHIN, TAURINE, L-CARNITINE.

NUTRIENTS per 100 Calories (9 fl oz)	
PROTEIN	2.5
FAT	5.3
CARBOHYDRATE	11.1
<b>VITAMINS</b>	
A	100%
B1	100%
B2	100%
B6	100%
B12	100%
C	100%
D	100%
E	100%
K1	100%
K2	100%
Niacinamide	100%
Pantothenic Acid	100%
Riboflavin	100%
Thiamin	100%
<b>MINERALS</b>	
Calcium	100%
Iron	100%
Magnesium	100%
Phosphorus	100%
Potassium	100%
Selenium	100%
Sodium	100%
Zinc	100%

### CORN SYRUP SOLIDS:

An easily digestible source of carbohydrates for infants with developing digestive systems.

### PARTIALLY HYDROLYZED NONFAT MILK & WHEY PROTEIN CONCENTRATE:

Proteins that are derived from milk and soy. They have important amino acids to support growth and development.

### PLANT-BASED OILS:

Palm olein oil, coconut oil, soy oil, and high oleic sunflower oil have important fats to support infant growth and development.

### PREBIOTIC BLEND:

Enfamil NeuroPro Gentlese Ready to Use now has a clinically tested blend of two prebiotics known as polydextrose (PDX) and galactooligosaccharides (GOS).

### 2'-FUCOSYLLACTOSE:

A Human Milk Oligosaccharide (HMO) with prebiotic properties, supporting gut bacteria growth and the immune system.

### MORTIERELLA ALPINA OIL & SCHIZOCHYTRIUM SP. OIL:

Sources of DHA and ARA, important for brain and eye development.

### RICE STARCH:

A thickening agent.

### CALCIUM CARBONATE:

A source of calcium to support bone health.

### ESSENTIAL MINERALS:

Essential minerals to support bone development, nerve function, and cellular activities.

### ESSENTIAL VITAMINS:

Essential to support bone health and overall growth.

### CHOLINE CHLORIDE & INOSITOL:

Important nutrients to support brain development and overall growth.

### TAURINE & L-CARNITINE:

Amino acids play important roles in central nervous system development and energy metabolism.

## Enfamil<sup>®</sup> NeuroPro<sup>®</sup> Gentlese<sup>®</sup> Ready To Use

All-in-one digestive comfort designed for easing fussiness, crying, gas and infrequent spit-up\* in 24 hours<sup>1</sup> and promotes soft stools.

\* Infrequent spit-up characterized as generally less than 5x per day.

1. Berseth CL, Johnston WH, Stolz SI, et al. Clinical response to 2 commonly used switch formulas occurs within 1 day. *Clin Pediatr (Phila)*. 2009;48:58-65.

LA5574 REV 4/26 ©2026 Mead Johnson & Company, LLC

**MeadJohnson**  
NUTRITION

