

LLA Operations

Nicole Prior – Head of Flight Operations



London Luton Airport

Contents

What does the Flight Operations team do?

LLA's Operations – Easterly/Westerly Operations

Legal obligations

- Noise Management Plan
- Noise Action Plan

What does the Flight Operations team do?

Noise Monitoring

Track Performance

Airspace Modernisation

Noise Complaints

Flight Performance
monitoring

Public and Community
Engagement

Scheduling

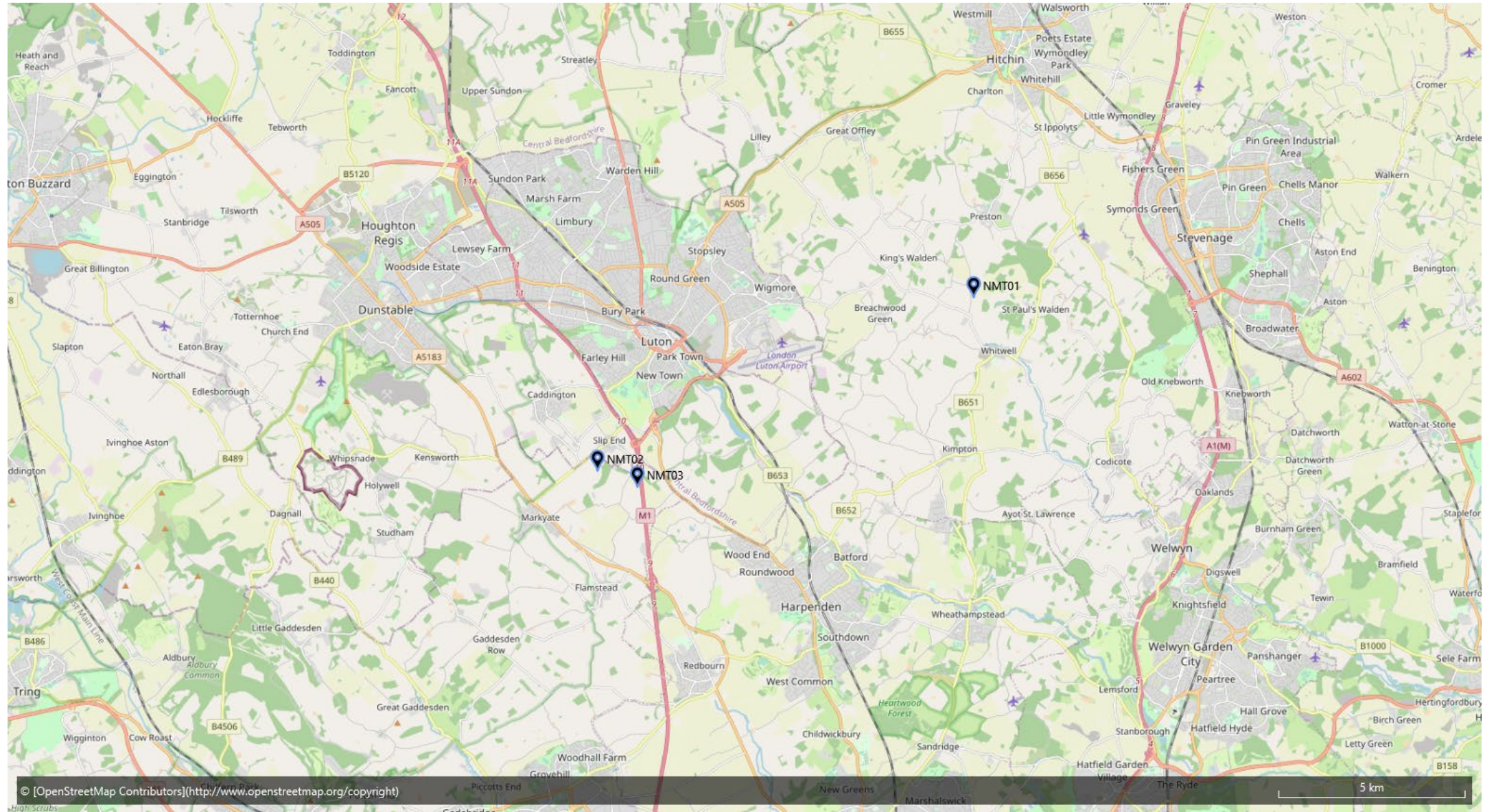
Noise Insulation Scheme

Ground Noise

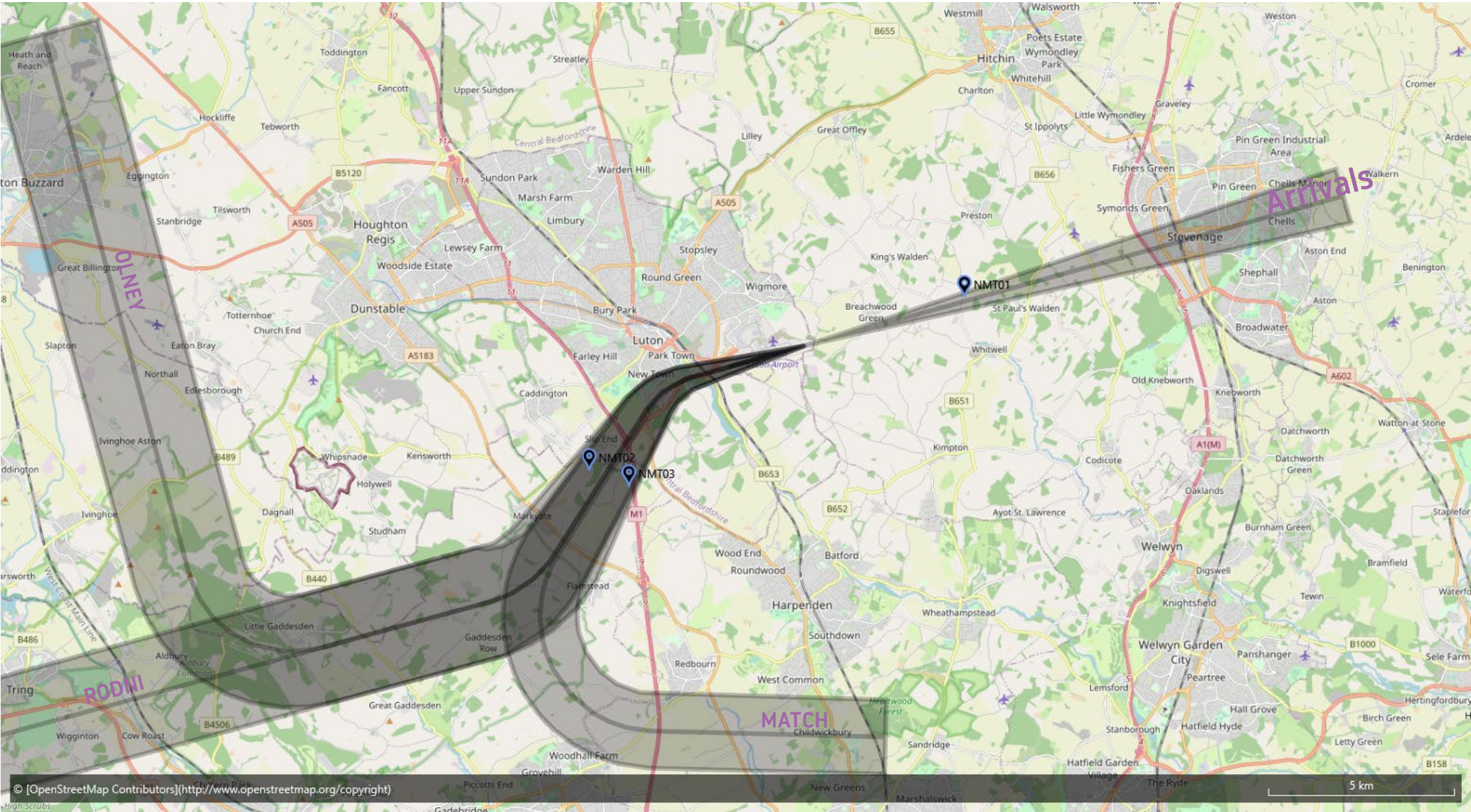
Noise Monitoring Terminals



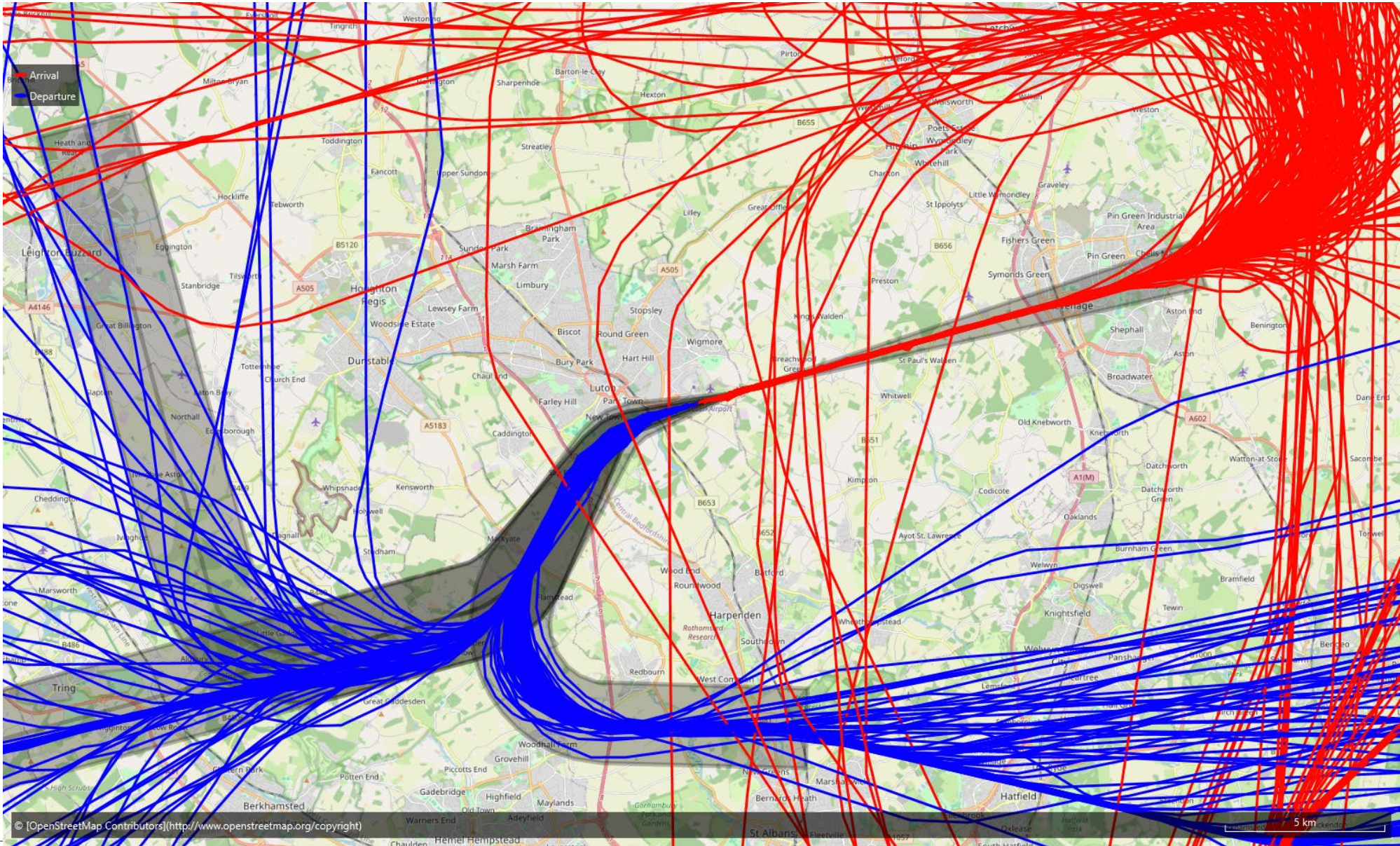
Noise Monitoring Terminals (NMT's) Locations



Noise Monitoring Terminals (NMT's) and Departure Routes



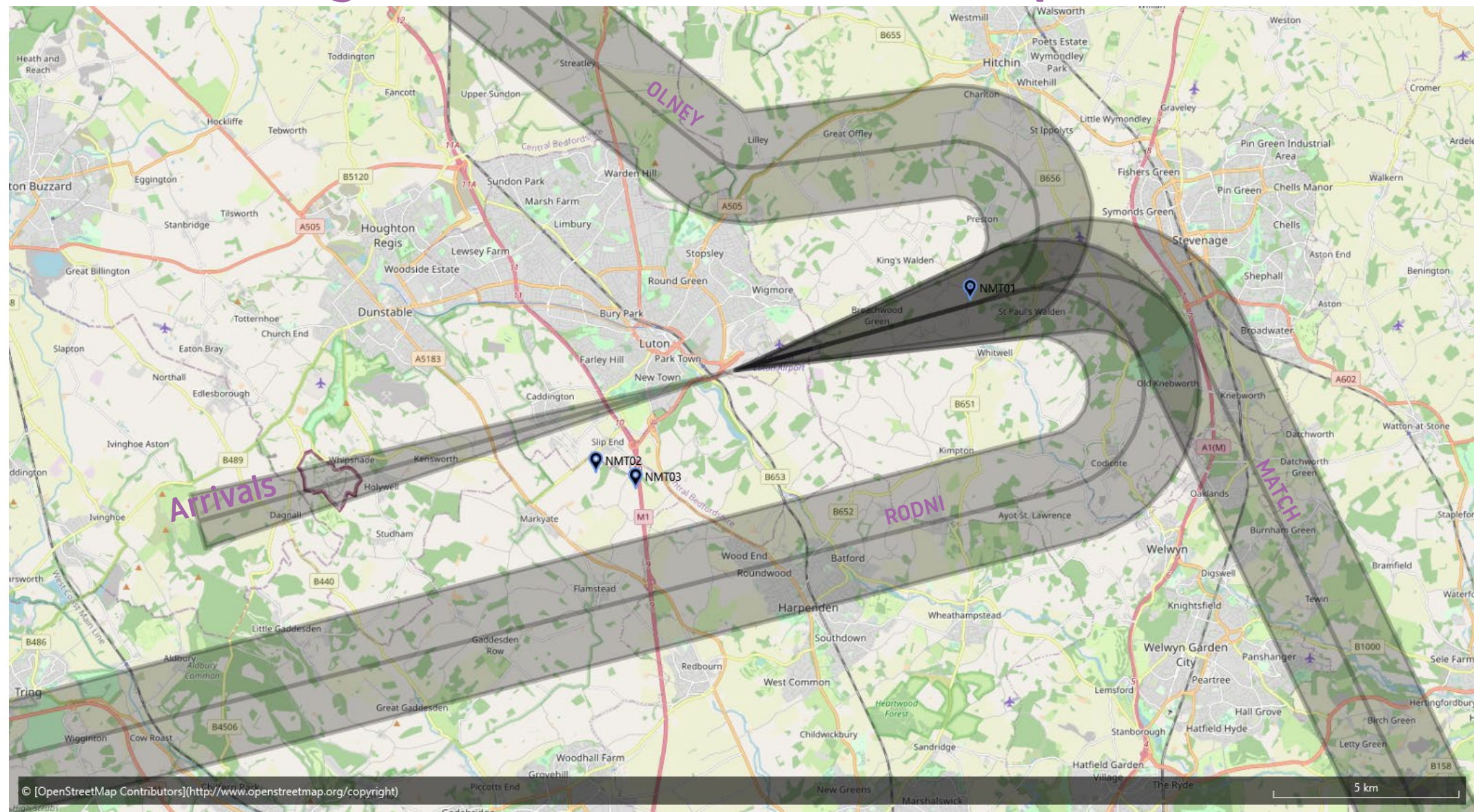
Westerly tracks (14th September 2024)



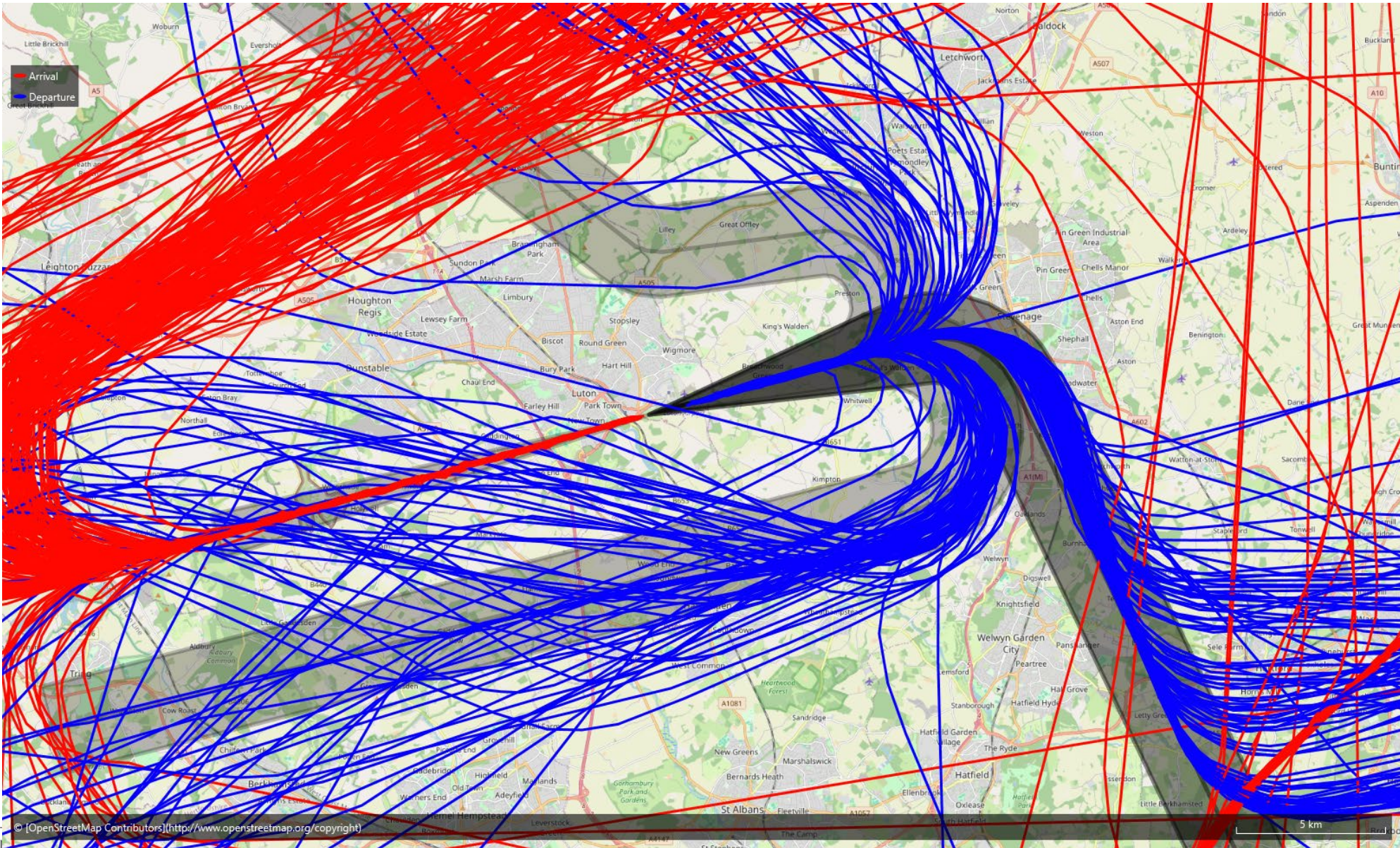
Westerly tracks (14th September 2024)



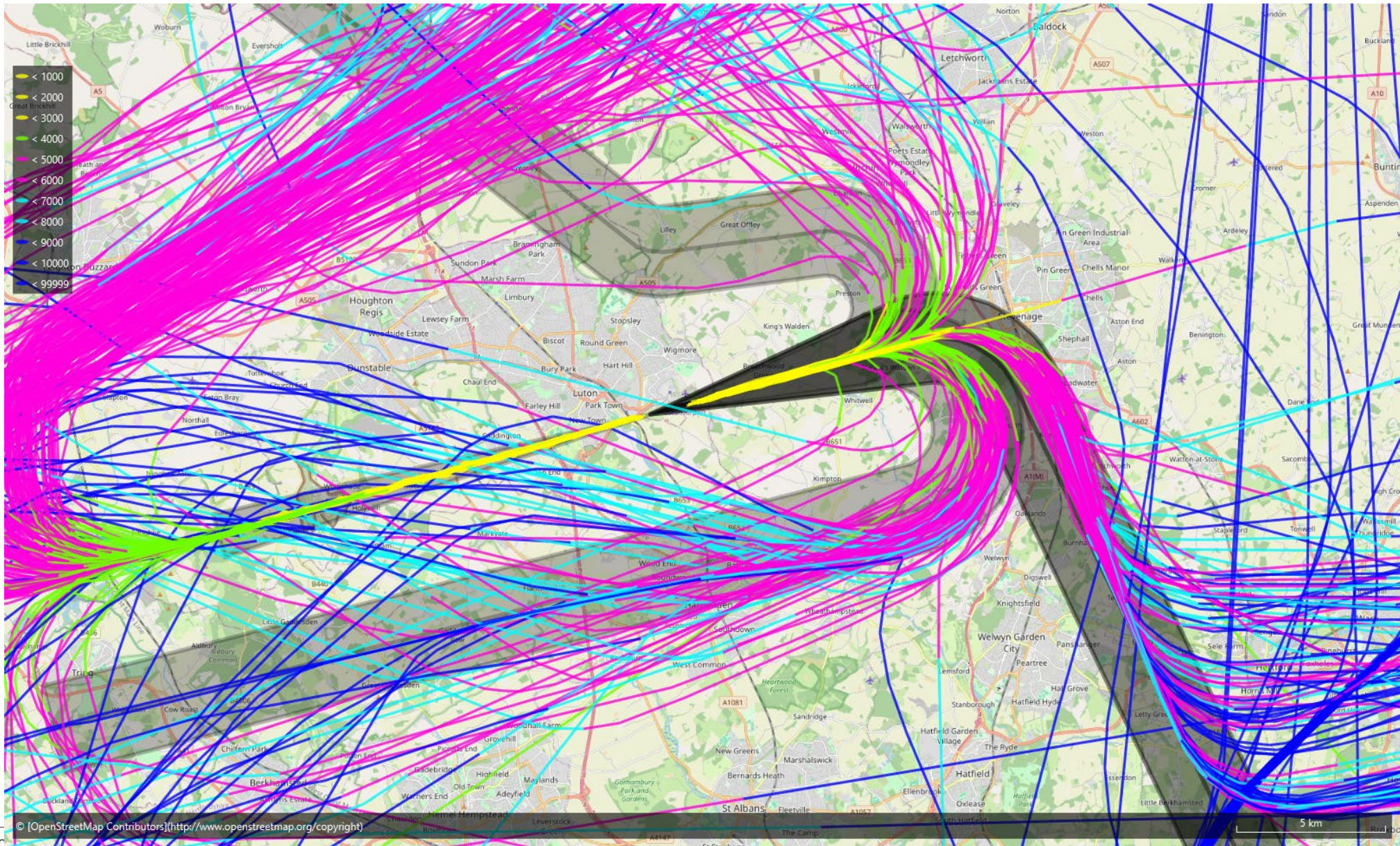
Noise Monitoring Terminals (NMT's) and Departure Routes



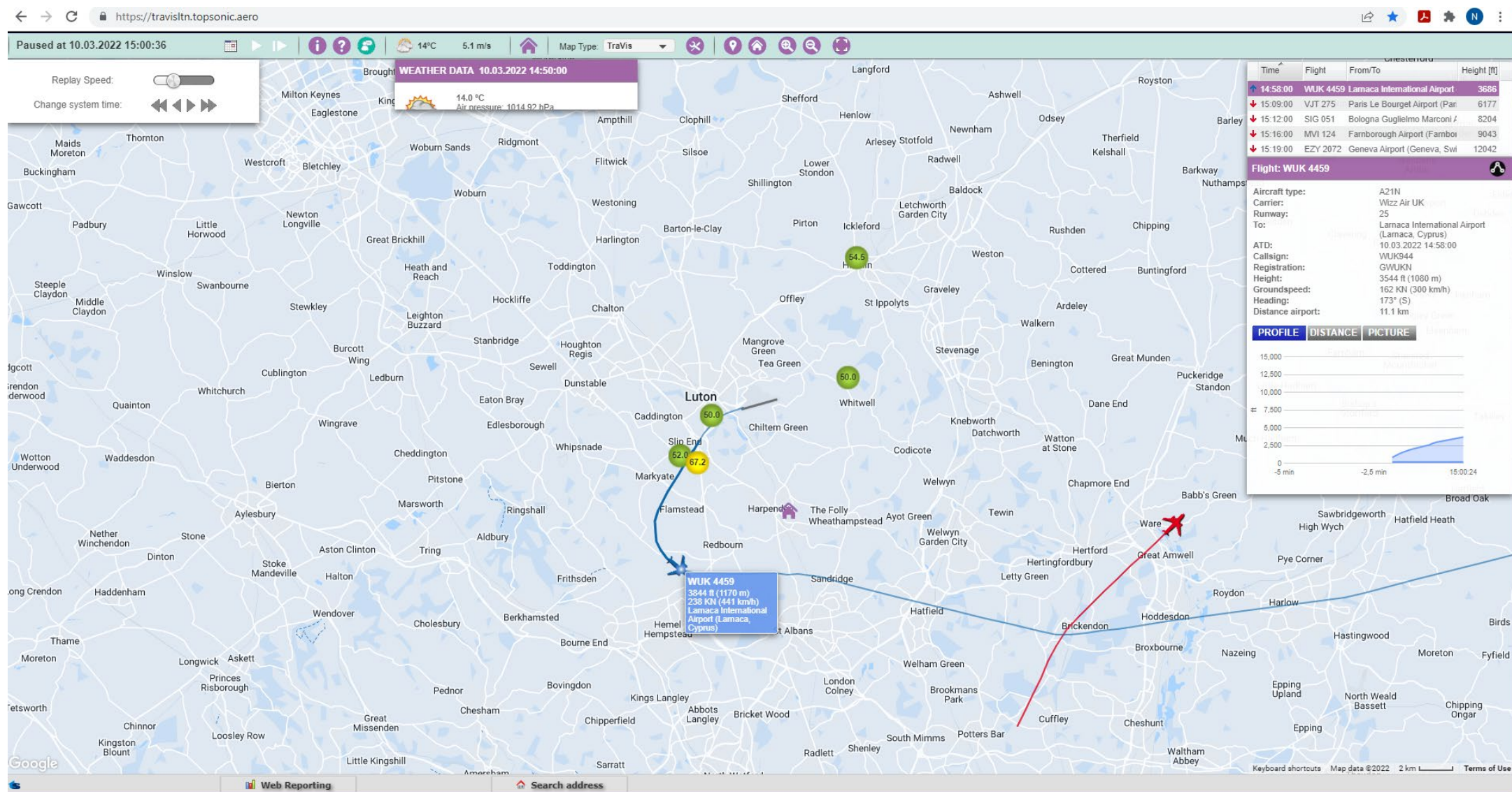
Easterly tracks (20th September 2024)



Easterly tracks (20th September 2024)

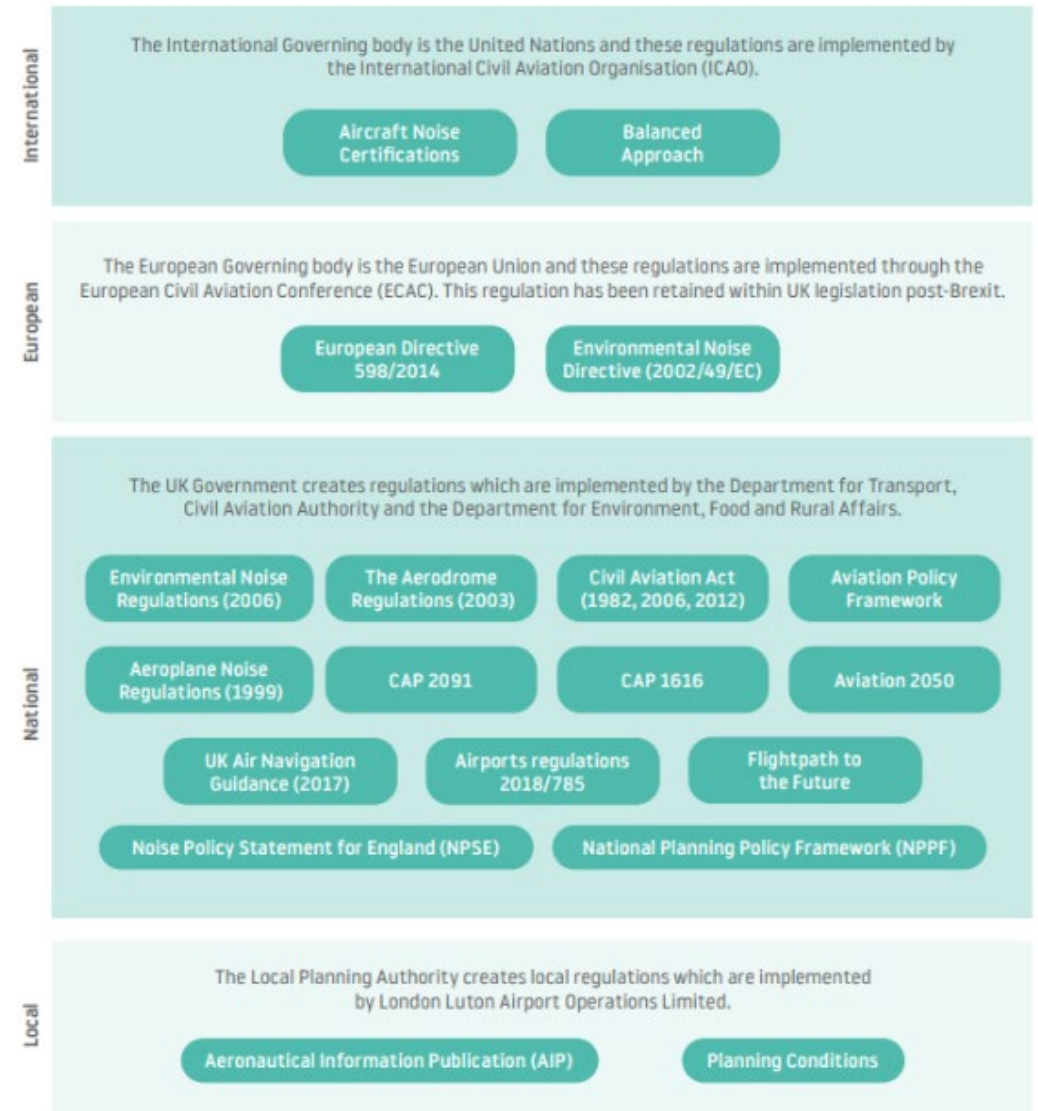


TraVis



Legal Obligations

- **International Regulation** – Set by International Civil Aviation Organisation (ICAO)
- **European regulation** – retained in UK legislation post-Brexit, set by the European Civil Aviation Conference.
- **National regulation** – Department for Transport, Department for Environment, Food and Rural Affairs and Civil Aviation Authority (CAA).
- **Local Regulation** – Monitored by the local planning authority.



Noise Management Plan

Noise Management Plan

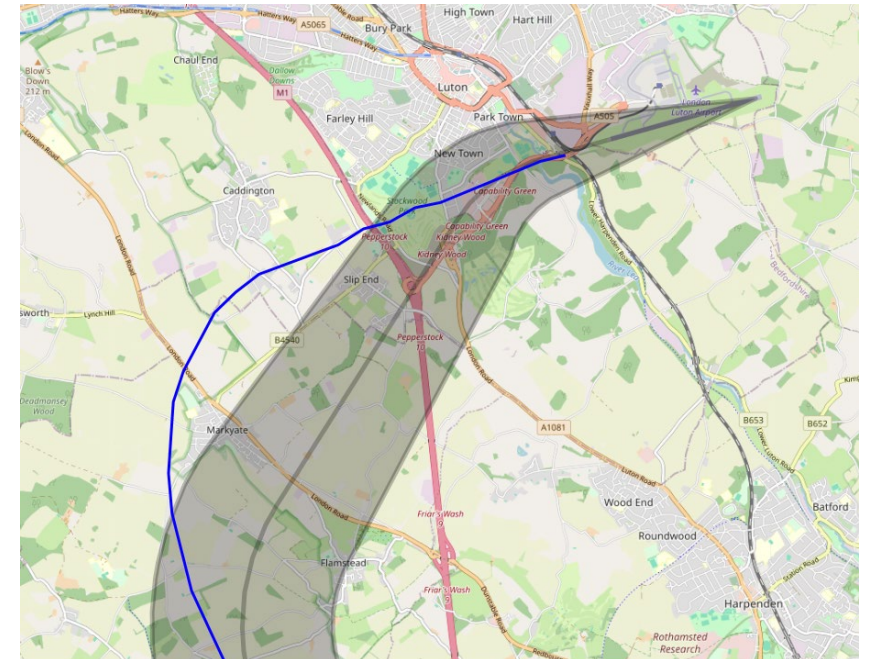
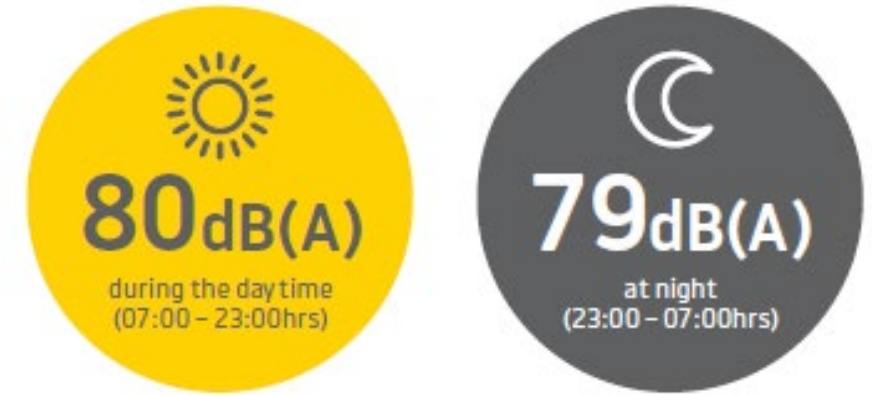
Monitored by the local planning authority and plan has recently have been approved by government through a planning inquiry in relation to the growth from 18mppa to 19mppa.

Covers the following legal obligations of the following:

- Quota Count System
- Movement Limits and Dispensations
- Noise Violation Limits
- Track Violation Scheme
- Noise Contour limits
- Reporting Requirements
- Ground Noise Control
- Noise Complaint handling
- Noise Insulation Scheme (both residential and non-residential) – **separate session**

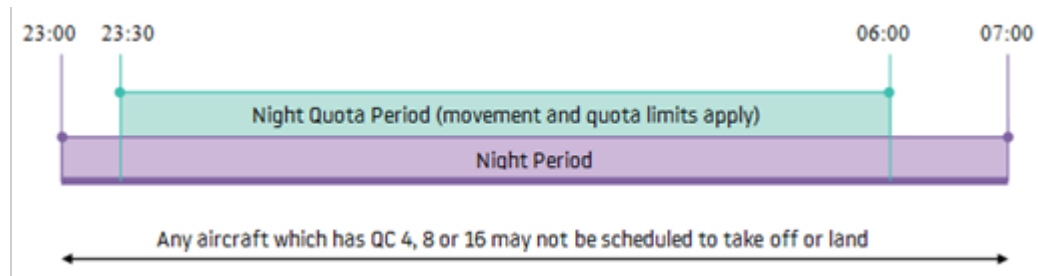
Noise and Track Violations

- We monitor the noise and track of every aircraft departing LLA.
- At our fixed noise monitor terminals, aircraft must be less than the limits, otherwise a fine will be issued.
- Aircraft must stay within the noise corridors up to 3,000ft during the day and 4,000ft at night. Note, on the westerly match route they must stay in corridor until between Harpenden/St Albans. Unless mitigating circumstances are granted, a fine will be issued.
- Fines are £1000 during the day and £2000 at night and are put into the Community Trust Fund.



Quota Count / Movement Limits / Dispensations

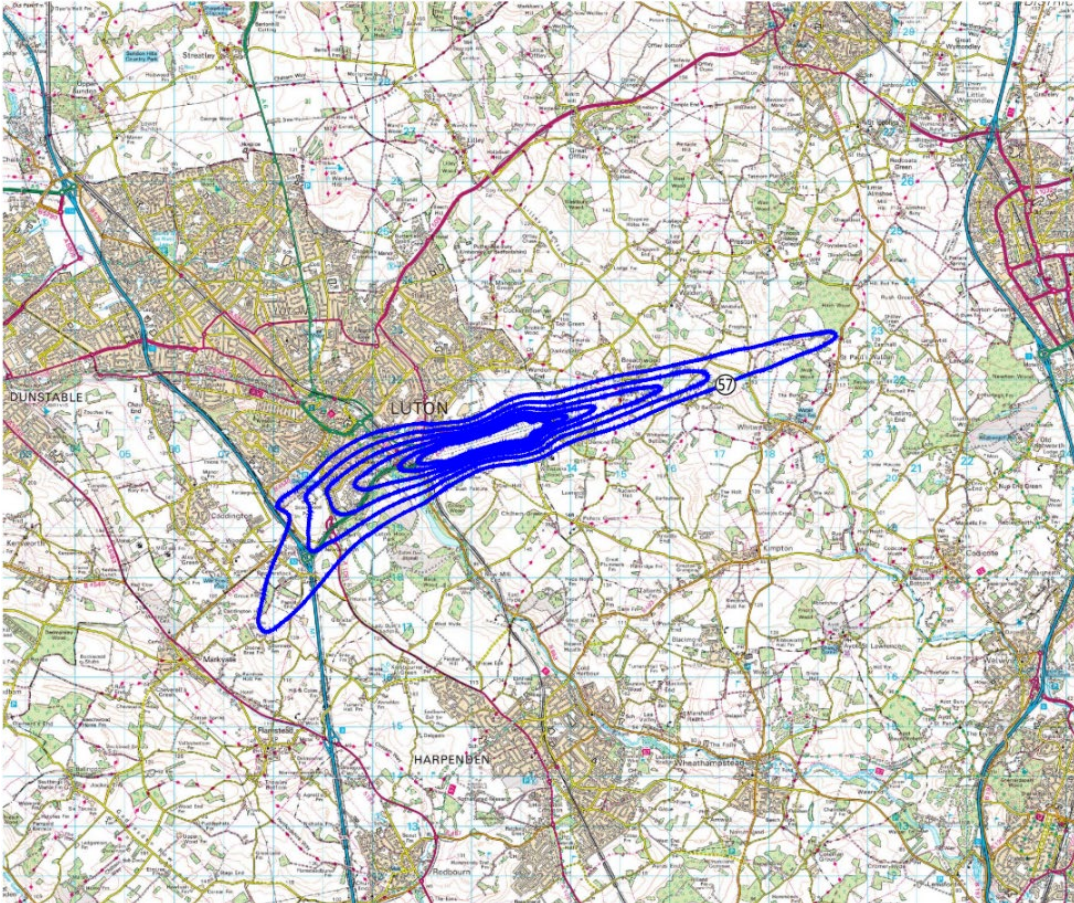
- The following limits apply during the Night Quota Period (2330 – 0559 hours local):
 - Total annual movements by aircraft per 12-month period shall be limited to 9,650;
 - The total annual noise quota in any 12-month period shall be limited to 3,500.
- The total number of movements by aircraft in any 12-month period is limited to 7,000 for the Early Morning Shoulder Period (0600 – 0659 hours local).
- Dispensations can be granted for the following reasons:
 - Weather
 - Air Traffic Disruption
 - Medical/Diversions/Emergencies
 - Passenger Hardship



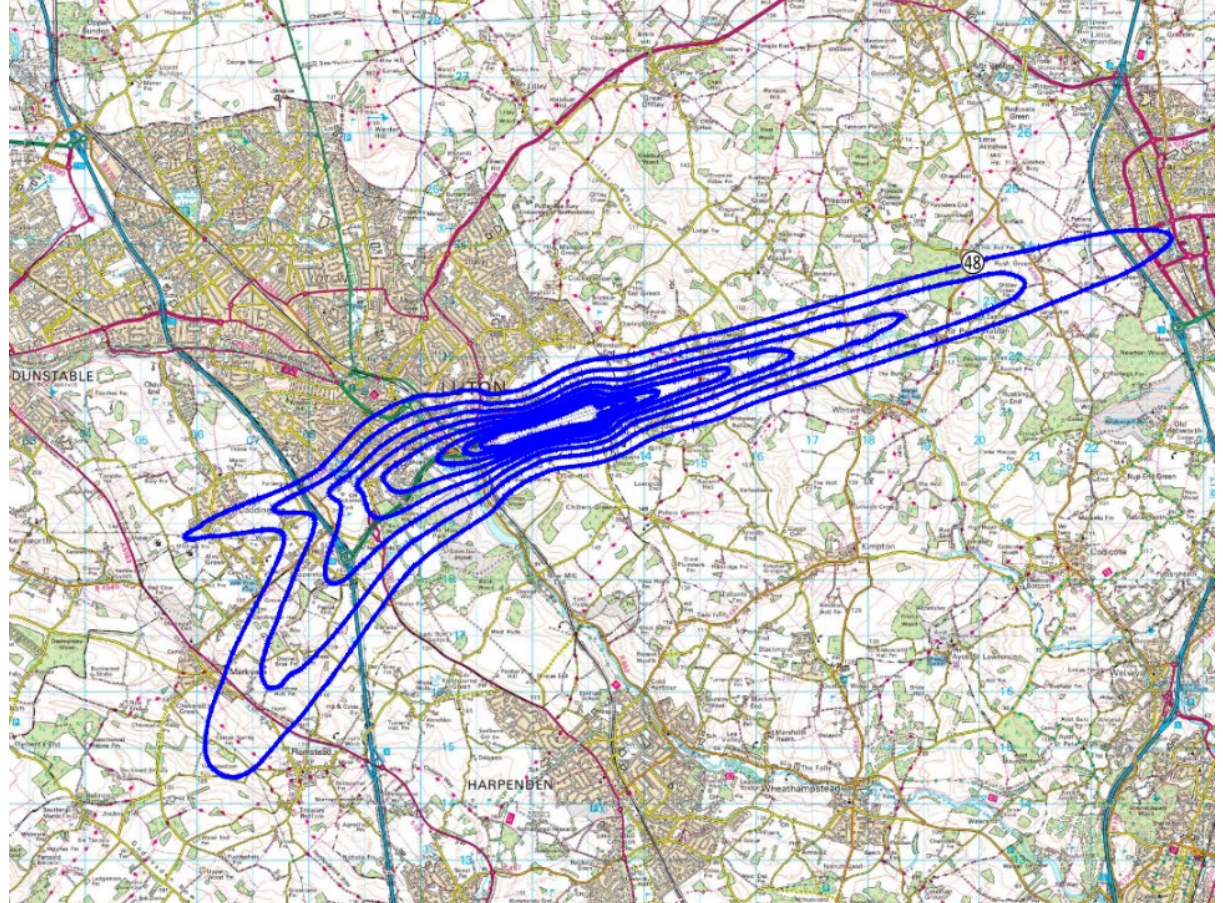
Certificated noise level (EPNdB)	Quota count	Typical aircraft
93 to 95.9	QC 2	Boeing 777-200 Airbus A300-600 Airbus A330
90 to 92.9	QC 1	Airbus A320/A321 Some Boeing 737-800 Boeing 757-200 Boeing 787-8
87 to 89.9	QC 0.5	Airbus A319/A320 Boeing 737-400 Boeing 737-800 Boeing 787-8
84 to 86.9	QC 0.25	Airbus A319/A320 Airbus A321neo Boeing 737-800 Max Dassault Falcon 7X/900/2000
81 to 83.9	QC 0.125	Airbus A320neo Global Express
Less than 81	QC 0	Challenger series (eg CL600) Cessna 525/550

Summer Contour Limits

- We have limits on the area of the 57dB day noise contour and 48dB night noise contour.
- Day is defined as 07:00-22:59hrs and night is defined as 23:00-06:59hrs, measured between 16th Jun – 15th Sept.



2023 day contours (Limit 21.1km², Actual area 14.0km²)



2023 night contours (Limit 42.1km², Actual area 33.0km²)

Ground Noise

- **Aircraft Power Back Procedures** – Aircraft are routinely towed backwards, rather than using engines.
- **Engine runs** – Engine runs conducted during the day in a designated bay with noise protection barriers.
- **Power Units** – Most commercial aircraft will use a ground power unit (GPU), rather than auxiliary power unit (APU). We have time limits associated with Auxiliary Power Unit.
- **Single Engine taxi** – encourage operators to only use one engine to taxi from the runway to stand and back.



Noise Complaints and Reporting Requirements

Reporting of noise in the following places:

- Community Noise Reports
- Quarterly Flight Operations Reports
- Annual Sustainability Reports

Methods of making complaints

- Telephone: 01582 395382
- Email: noise.enquiries@ltn.aero
- Online TraVis: <https://travisltn.Topsonic.aero>



Quarterly Flight Operations Report

QUARTER 2 2024

Community Noise Report

Breachwood Green
January – April 2024



Noise Action Plan

Noise Action Plan

Requirement from Department of Environment, Food and Rural Affairs (DEFRA), set at a National level for all airports with greater than 50,000 movements.

LLA has been creating Noise Action Plans since 2013.

Includes targets for a 5 year period (2024-2028), set around the International Regulation known as the Balanced Approach.

London Luton Airport



Noise Action Plan 2024–2028



Noise Action Plan - Approach

Operational procedures – Includes measures such as our noise violation limits, continuous descent approach procedures, airspace modernisation to change routes, single engine taxi.

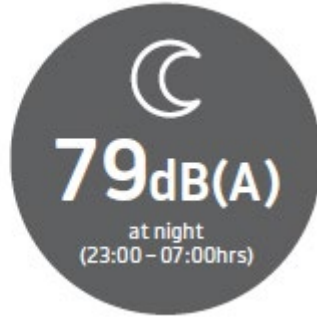
Quieter aircraft – Encouraging the quietest aircraft to operate at LLA, for example we had largest % of NEO's and Max aircraft at LLA in 2023 and improved in 2024.

Operational restrictions – Includes the night movement limits, contour limits and ground operation limits.

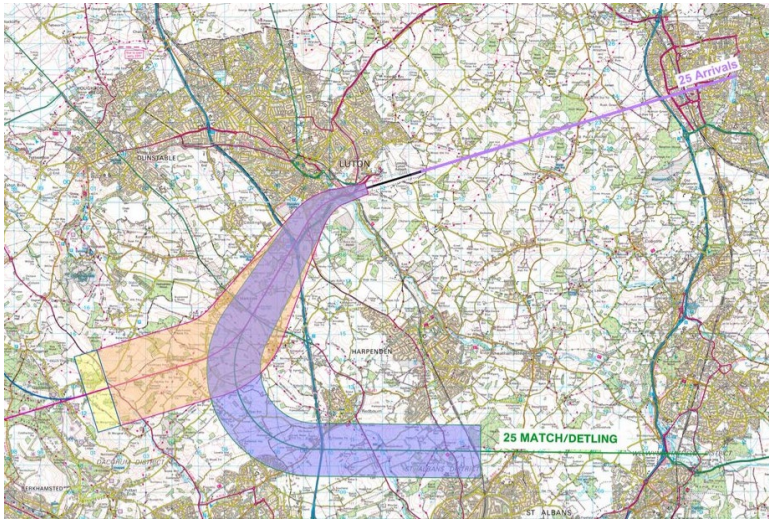
Land use planning and mitigation – Noise Insulation Scheme, working with local authorities around developments, locations of noise monitoring terminals.

Working with local community and industry partners – Engagement through our consultative committee, public surgery events and airspace and noise week.

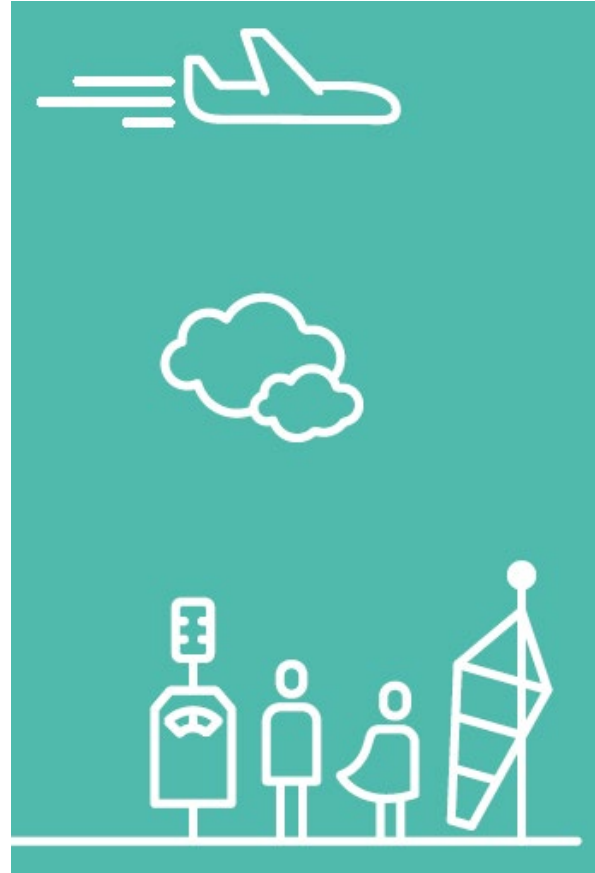
What's in the Noise Action Plan?



Reduce the Noise Violation Limits



Interactive Google Earth to display the flight routes / contours



Airspace and Noise Week



Partner with a university for noise trials at LLA



Encourage Chapter 14 aircraft. Aim to be 75% Chapter 14 by 2028 (in line with P19).

Wrap Up

What does the Flight Operations team do?

LLA's Operations – Easterly/Westerly Operations

Legal obligations

- Noise Management Plan – current noise restrictions
- Noise Action Plan – plans for the future

