

Industry: **Water**

Products: **Modular PLC**

# Mitsubishi Electric solution controls new £17m showpiece Llwyn Onn water treatment works from inlet-to-outlet



More information on the following pages

First published May 2014 by Mitsubishi Electric Europe UK Branch based on information from Llwyn Onn water treatment works

**Mitsubishi Electric Europe B.V.** / FA – European Business Group / Gothaer Straße 8 / D-40880 Ratingen / Germany  
Tel. +49 (0)2102 486-0 / Fax +49 (0)2102 486-1120 / [info@mitsubishi-automation.com](mailto:info@mitsubishi-automation.com) / [eu3a.mitsubishielectric.com](http://eu3a.mitsubishielectric.com)

## **Mitsubishi Electric solution controls new £17m showpiece Llwyn Onn water treatment works from inlet-to-outlet**

**Ratingen, Germany 9<sup>th</sup> July, 2014**

**The Dee Valley Water (DVW) project to build a new water treatment works at its flagship site, Llwyn Onn in North Wales, has now been completed. The £17M project was officially opened in March 2014 by the Minister for Natural Resources and Food, Alun Davies and is controlled by a Mitsubishi Electric system redundant, Q series modular PLC solution. The new works has been operational since August 2013.**

The new works provides DVW with the capacity to produce 47,000m<sup>3</sup> of drinking water per day for Wrexham and the surrounding area. In addition to the standard treatment processes, Llwyn Onn also includes an automated processing system for removing manganese, a mineral that occurs naturally in the surface water of the DVW area.

With so many people depending on a continued supply of clean water the process for selecting a reliable automation control system for the entire works was particularly stringent. In all, four automation providers, including Mitsubishi, submitted proposals which were scrutinised by DVW and the main project contractor Black & Veatch, before the preferred Mitsubishi solution was chosen.

The majority of the subcontract supply chain for this project has been sourced from the north Wales area, including the system integrator, Tycon Automation Ltd. Tycon has an extensive knowledge of the Mitsubishi product range, having used components to complete several

large water control projects in the past. Investing in the development of a large library of field proven application specific software modules meant that Tycon was perfectly positioned to provide the integration for what is a large and complex site control solution.

### **Process optimisation at Llwyn Onn**

The water treatment process consists of dissolved air flotation (DAF) clarification, granular activated carbon (GAC) filtration followed by rapid gravity filtration (RGF) and a chlorine contact tank before being pumped to a storage tank - from where it is fed into the distribution network.

Although this is not the conventional process order, it is an arrangement that has been designed to work in this area, which has the additional issue of manganese to deal with.

A crucial aspect to the control system was the use of a full dual redundant PLC system. Complete with its own CPU, the secondary system is fully wired-in and tested, increasing the system reliability by mirroring the primary CPU so that in the unlikely event of a failure of the main CPU, power supply or base unit, the secondary system can take over within 21 milliseconds from the same control point.

Andrew Robertson, Technical Director at Tycon, 'There were elements in the contract specification which in our opinion meant it suited the Mitsubishi hardware. Historically I believe this was a Rockwell site but Dee Valley Water were flexible in their approach and were looking for a fully redundant system. They could see that we had achieved this before with a very reliable fully redundant architecture on a larger system installed on the Isle of Man, which we arranged for them to visit, it meant that we could meet both the performance targets and the price point set for this project.

### **Realising control with 1000+ I/O**

'We spoke to Dee Valley Water at length about their preferences and reliability was of paramount concern. The Mitsubishi QnPRH PLCs are designed to work in a redundant set-up and therefore met the specification from the outset. The system was designed with two processor racks and three I/O racks in the main MCC, with 1/3 of the plant on each I/O rack. The system lent itself to being designed this way as the process contains three DAF lanes, six carbon filters and six rapid gravity filters which give an inherent amount of redundancy in the process; we matched with the control system design to provide the most robust engineering solution.

'The pump motors are mostly controlled by variable speed drives (VSDs) which are connected using a Profibus network. We used separate Profibus networks within the MCC, with separate networks going out into the field to simplify design and increase robustness. We employed Mitsubishi Slice I/O with Profibus interfaces to manage the I/O locally in the field, which reduces cabling and installation costs and works well with the Mitsubishi PLC which will accept most fieldbus network protocols with a plug-in comms module.

'Speed wise, and because there is a lot of digital and 4-20mA I/O (over a thousand I/O points) including flow meters, level instruments and quality instruments we segmented the Profibus networks to provide maximum redundancy and system resilience. The response time of the PLC however is far beyond what we would need for this application. PID control loops for flow control valves etc are well within the processing capability of the CPU, with the control loops for the chemical dosing system being the most critical. For this application we are talking seconds, rather than milliseconds, which we often work with in other more dynamic higher-speed applications.

'The Mitsubishi GX Works II software is a nice environment for us to work

in, it is easy to find your way around and easy to use. We were able to use function blocks previously developed for water treatment applications by Tycon Automation Ltd, which made the job simpler to realise and enabled us to add value to the project. The flexibility of the programming environment meant that the system architecture could be broken down into function blocks representing all parts of the plant. A remote access VPN link into the site means we can access the SCADA layer and therefore the PLC in real time and can easily interrogate the system to see what the raw code is doing and carry out any fault finding activities. It is important with such a large program to have a logical structure which makes it easy to interrogate.'

### **Mitsubishi Electric QnPRH Series PLC architecture**

The QnPRH is Mitsubishi's most sophisticated control solution and represents the top end of the Q Series Automation Platform. It offers a high level of system redundancy which insures complete immunity to process interruptions caused by power or system failures. This is achieved by using a fully redundant architecture that duplicates processors and network links. Hot-swap capability provides an operational level of redundancy. The solution was developed specifically for use in applications where downtime cannot be tolerated for reasons of equipment damage, interruption of service, penalties, or regulatory compliance.

The dual redundant CPUs (control and standby) mean that any failure of the control CPU causes immediate transfer of control to the back-up, preventing system failure or interruption. Synchronization of up to 100,000 words of process data is possible between CPUs per scan. Switchover time is typically around 20-40ms, ensuring a "bumpless" transfer. Because the CPUs reside on physically separate racks, the control CPU can be replaced while back-up maintains system operation. Most parts are interchangeable with standard Q Series systems which

controls both purchase cost and total cost of ownership.

### **Ongoing system support**

The support agreement for the site has been revised to take into account the new plant on a 24hr and 7 day per week basis. Tycon Automation Ltd are always available for advice over the telephone, with remote interrogation of the control system being the next step. The relative transparency of the system means that networks and communications issues right down to the I/O point for any component can be identified and any issues addressed quickly; making sure service support is both fast and cost effective.

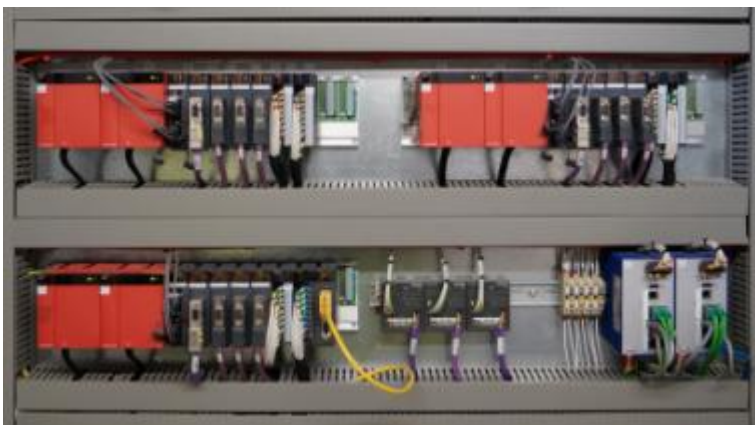
### **Image Captions:**



**Picture 1:** Dee Valley Water's £17m flagship water treatment works at Llwyn Onn, North Wales, is controlled from inlet-to-outlet by a Mitsubishi Electric system redundant, Q series modular PLC solution.



**Picture 2:** The relative transparency of the system means that networks and communications issues right down to the I/O point for any component can be identified and any issues addressed quickly.



**Picture 3:** The Mitsubishi QnPRH PLCs are designed to work in a redundant set-up. The system was designed with two processor racks and three I/O racks in the main MCC, with 1/3 of the plant on each I/O rack.



**Picture 4:** The QnPRH is Mitsubishi's most sophisticated control solution and represents the top end of the Q Series Automation Platform.

**Movie:**

[https://www.youtube.com/v/c3hq4x4gj9c?version=3&f=videos&app=youtube\\_gdata](https://www.youtube.com/v/c3hq4x4gj9c?version=3&f=videos&app=youtube_gdata)

First released in United Kingdom on 23<sup>rd</sup> of May 2014

**Note to Editor:** if you would like the text in another language please contact Nicola Bigmore at DMA Europa – [nicola@dmaeuropa.com](mailto:nicola@dmaeuropa.com).

**About Mitsubishi Electric**

With over 90 years of experience in providing reliable, high-quality products to both corporate clients and general consumers all over the world, Mitsubishi Electric Corporation is a recognized world leader in the manufacture, marketing and sales of electrical and electronic equipment used in information processing and communications, space development and satellite communications, consumer electronics, industrial technology, as well as in products for the energy sector, water and waste water, transportation and building equipment.

With around 124.000 employees the company recorded consolidated group sales of 39.3 billion US Dollar\* in the fiscal year ended March 31, 2014.



Our sales offices, research & development centres and manufacturing plants are located in over 30 countries.

Mitsubishi Electric Europe B.V., Factory Automation European Business Group (FA-EBG) has its European headquarters in Ratingen near Dusseldorf, Germany. It is a part of Mitsubishi Electric Europe B.V., a wholly owned subsidiary of Mitsubishi Electric Corporation, Japan.

The role of FA-EBG is to manage sales, service and support across its network of local branches and distributors throughout the EMEA region.

*\* At an exchange rate of 103 yen to the US dollar, the rate given by the Tokyo Foreign Exchange Market on March 31, 2014*

Further Information:

[eu3a.mitsubishielectric.com/fa](http://eu3a.mitsubishielectric.com/fa)

[www.mitsubishielectric.com](http://www.mitsubishielectric.com)

**Press contact:**

**Mitsubishi Electric Europe B.V.**

Factory Automation European Business Group

**Monika Torkel**

Marketing Communications Coordinator  
Gothaer Str. 8

40880 Ratingen, Germany

Tel.: +49 (0)2102 486-2150

Fax: +49 (0)2102 486-7170

[Monika.Torkel@meg.mee.com](mailto:Monika.Torkel@meg.mee.com)

**PR agency:**

**DMA Europa Ltd.**

**Mr. Roland Renshaw**

Europa Building, Arthur Drive, Hoo Farm  
Industrial Estate, Kidderminster,  
Worcestershire, UK

Tel.: +44 (0)1562 751436

Fax: +44 (0)1562 748315

[roland@dmaeuropa.com](mailto:roland@dmaeuropa.com)

[www.dmaeuropa.com](http://www.dmaeuropa.com)