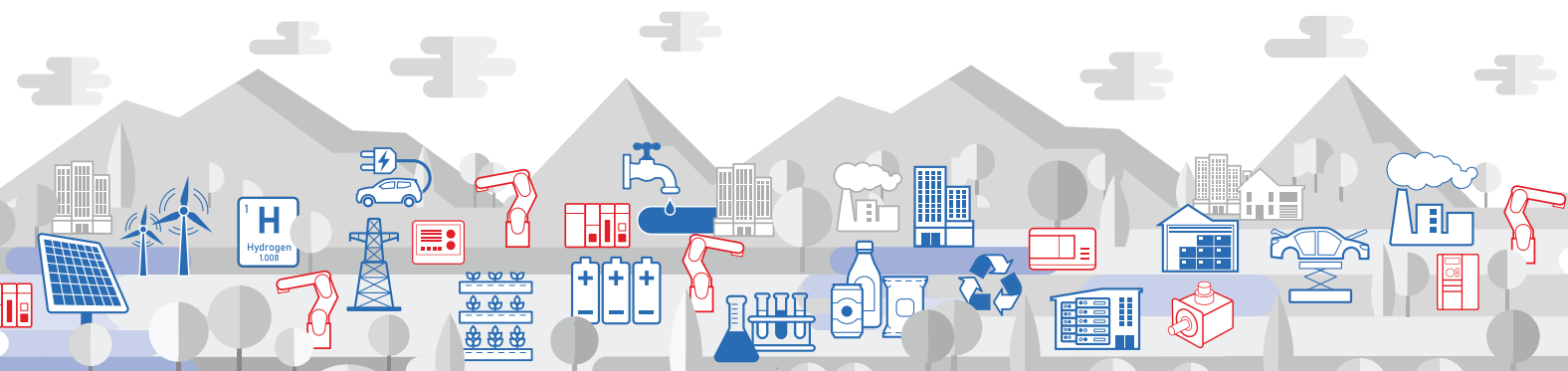


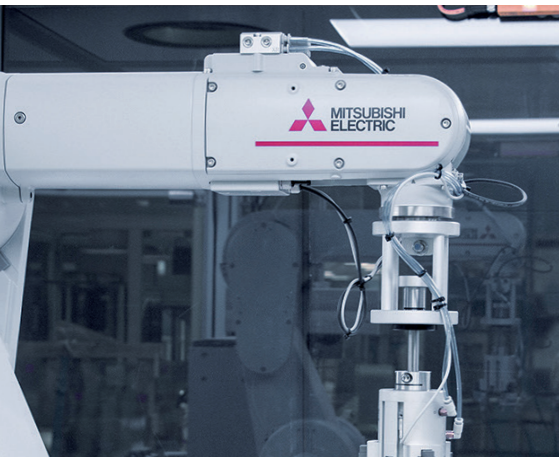
Can your business afford not to maintain your industrial robots?

Robot Maintenance Solutions



- Safeguard machine availability, performance and profitability
- Ensure efficient machine performance and sustained product quality
- Proactively detect machine issues and maximise equipment life





ROBOT MAINTENANCE SOLUTIONS

Mitsubishi Electric can help improve machine reliability and reduce costly unplanned downtime by providing maintenance services tailored to suit your automation assets.

Essential regular maintenance and inspection activities are undertaken on each Mitsubishi Electric robot to ensure continued reliable operation.

Our robot maintenance services include planned maintenance activities, and reactive support in the event of a breakdown situation, all of which can be offered as annual or multi-year support contracts.

Periodic Maintenance

Maintenance and inspection schedule which is based on the hours your robots have been in operation:

- Check servo history, error history
- Evaluation of preventative maintenance service intervals
- Inspect robot for grease leaks
- Lubrication of all robot axes
- Inspection and adjustment of timing belt tension
- Replacement of robot arm and controller batteries
- Inspect each axis for backlash / free play / rough movement / noise
- Replacement of air filter on robot controller

Overhaul Maintenance

A longer term robot maintenance plan which is performed in the workshop, following approximately 24,000 hours in operation.

This includes the 'Periodic Maintenance', activities, as well as the following:

- Timing belt replacement
- Re-greasing of arm joints
- Re-greasing of base joint

For more information and to register your interest
email: automation.serviceteam@meuk.mee.com
visit: gb.mitsubishielectric.com/fa/lp/robot-maintenance

Mitsubishi Electric providing Intelligence in Added Value Services



Scan to visit website

MITSUBISHI ELECTRIC EUROPE

MITSUBISHI ELECTRIC EUROPE BV, TRAVELLERS LANE, HATFIELD, HERTFORDSHIRE AL10 8XB