

Smart Radiator Thermostat

Preparation

System Requirements

For controlling Smart Radiator Thermostats a Central Control Unit is needed. For instructions on installing these products please see the Technical Handbook at www.wavin.com/Sentio.

Limitations

	Max
⊕ Rooms available on the Central Control unit	8
⊕ Rooms total (with extension module or via commissioning tool)	24
⊕ Number of thermostats and sensors	24
⊕ Smart Radiator Thermostats	16

Compatibility

M28 and M30 valves	Art. 4063805
RA valves	Art. 4063804

Technical Information

Radio frequency	868.5 MHz
Power supply	3 x AA Alkaline 1.5V Battery
Battery life	Up to 3 years
Dimensions	L = 85 mm, \varnothing = 50 mm
IP protection	IP30
Operation environment	0°C - 40°C
Ambient humidity	Humidity 5 - 95%
Storage temperature	-10°C - 40°C
Valve stroke	Max. 4.5 mm

Compliance

Installation must comply to (local) guidance and regulation. The Smart Radiator Thermostat is developed in Europe and is CE approved according to following EU directives:

2014/53/EU, 2014/35/EU, 2014/30/EU and 2011/65/EU

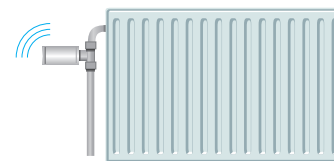
Safety: ETSI EN 300 220-1 V3.1.1:2017; ETSI EN 300 220-2 V3.2.1:2018
EN 60730-1:2011; EN 60730-2-8 ed
2:2002/A1; EN 55016-2-3 ed.4:2017; EN 55032 ed 2:2016;
EN 61000-4-2 3d 2:2008; EN 61000-4-3 ed
3:2006/A1/A2; EN 61000-4-8 ed 2:2010; EN 61000-6-1 ed 3:2019;
EN61000-6-3 ed 2: 2007/A1.



Dispose of the device and batteries according to local regulations.

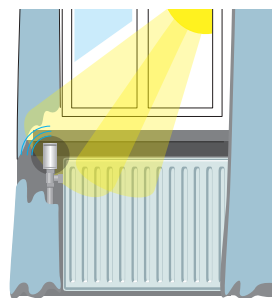
Connect

Situations in which the Smart Radiator Thermostat can be used:



1. Stand alone.

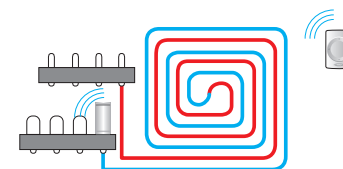
- ⊕ Mounted in horizontal position
- ⊕ Radiator Thermostat is not covered



2. Dependent on room thermostat to compensate for reduced temperature measurement accuracy.

Add room thermostat in case:

- ⊕ Mounted vertical
- ⊕ Covered by objects
- ⊕ Hidden behind curtains
- ⊕ In direct sunlight

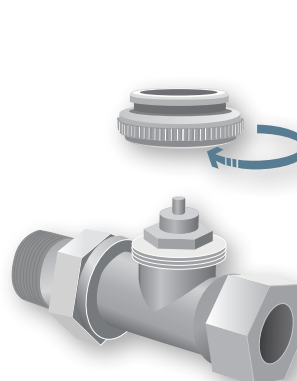


3. Wireless actuator function on a manifold.

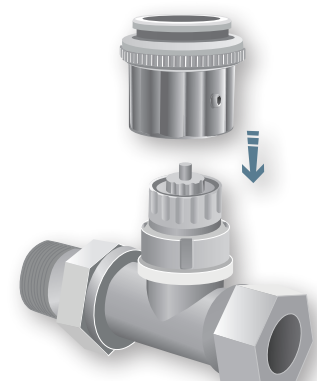
To use the Smart Radiator Thermostat as an underfloor heating actuator, set the output to "Underfloor" in the commissioning tool.

For more detailed instructions follow the Technical Handbook at www.wavin.com/Sentio.

Adapter M28 / M30



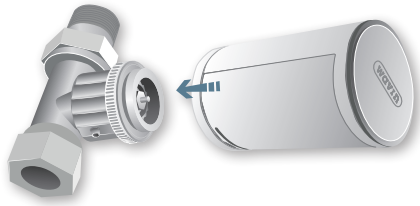
Adapter RA



Check the valve compatibility list at www.wavin.com/Sentio.

User Manual

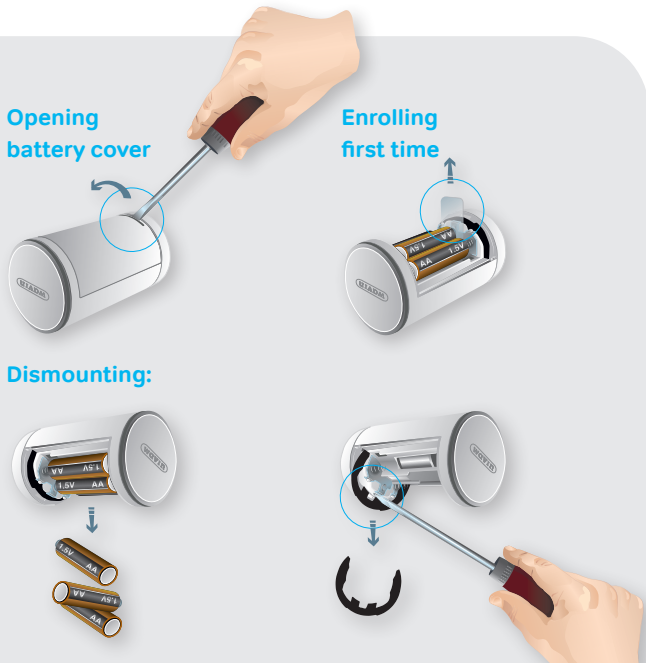
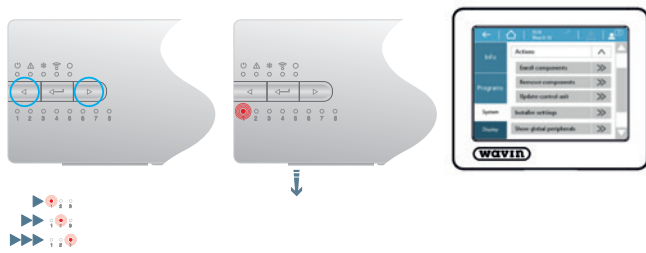
With the correct adapter connected, click the Smart Radiator Thermostat on the radiator.



Set



To enroll the Smart Radiator Thermostat to the Central Control unit, select one of the 8 channel outputs on the unit and insert the batteries in the device. Or enroll via the Commissioning tool as instructed in the Technical Handbook.

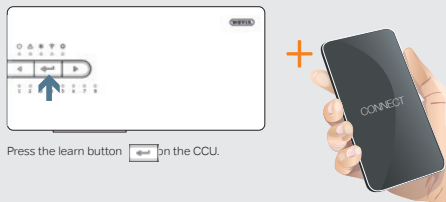
When the Smart Radiator Thermostat is installed and enrolled the battery cover can be closed, this will start the automatic calibration sequence where the Smart Radiator thermostat adapts to the thermostatic valve.



Go!

How to connect to the APP

- 1 
- 2 
- 3 

Registration Key (RK) is found on a sticker on the CCU, usually on the front.
- 4 

Press the learn button  on the CCU.

Warnings

Warning/error led meaning →
Check info in APP or Commissioning tool



Signals	Meaning
Yellow	Battery almost empty
Green	Enrolling successful*
Red	Lost signal
	Battery cover open
	Valve detection not yet finished

* Only available with Smart Radiator Thermostat firmware version 4.0 or higher



Wavin is part of Orbia, a community of companies working together to tackle some of the world's most complex challenges. We are bound by a common purpose: To Advance Life Around the World.

Wavin B.V. World Trade Center (WTC) | Wavin Tower F9 Schiphol Boulevard 425 | 1118 BK Schiphol The Netherlands | Internet www.wavin.com | E-mail info@wavin.com

© 2023 Wavin Wavin reserves the right to make alterations without prior notice. Due to continuous product development, changes in technical specifications may change. Installation must comply with the installation instructions.

