

We are entrusted with the most precious thing - your embryos. Which is why we have developed a world class embryo selection model.

What is Caremaps-AI?

Caremaps-AI uses time lapse imaging, uninterrupted incubation conditions and artificial intelligence-driven predictions to enable our embryologists to assess the likelihood of each embryo becoming a baby, with increased accuracy compared to standard methods.

Caremaps-AI offers benefits for all types of treatments and patients:

1. Information

Every step of your embryo's development is captured. Nothing is missed and we have thousands of images of your embryos to inform us about their potential to become your baby. We also provide you with a video of your transferred embryo.

2. Ranking for selection of the best embryo Caremaps

AI assesses, predicts and ranks the embryos according to their potential to implant and give you a baby, ensuring we select the best embryo, first time.

3. Evidence-based

Caremaps-AI offers embryo selection that is proven on a large scale, in our own hands, to be more effective at identifying the embryo with the greatest chance of becoming a baby, than using information on the appearance of your embryos gained during standard methods.

Standard Incubation: 6 images over 5 days

Time Lapse Imaging: 5,040 images over 5 days



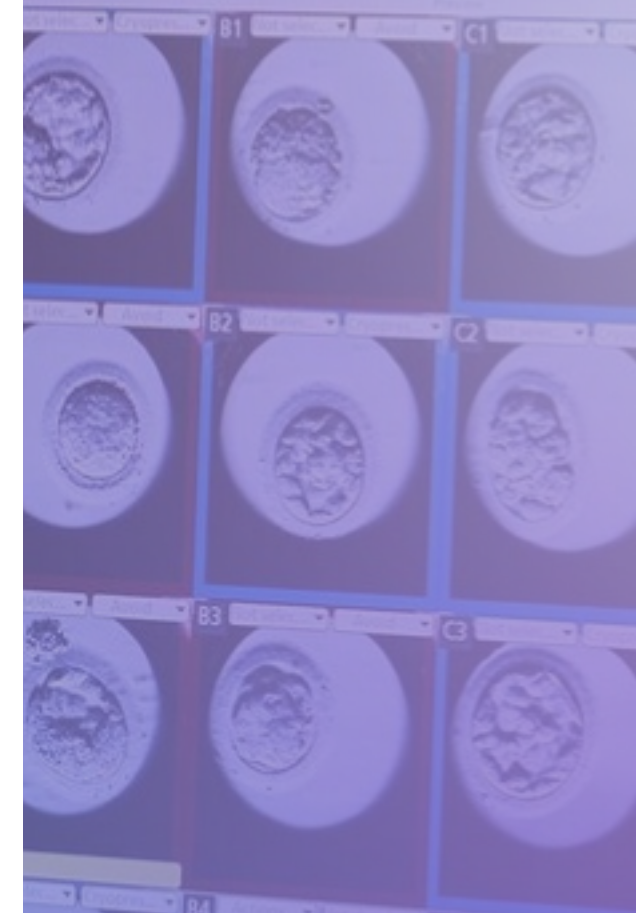
Your next steps

If you would like to help, or would like more information, our team are on hand to help. Speak to our new patient enquiry team today on **0800 564 2270**, our opening hours are Monday to Friday 8am to 6pm and Saturday 8am to 4pm.

If you would like to help, or would like more information, our team are on hand to help. Speak to our new patient enquiry team today on **0800 564 2270** or visit our website, where you can read other donors stories & experiences: www.carefertility.com



SCAN ME!



Accurate award-winning assessment using artificial intelligence to select embryos with the highest potential to become a baby.

Leading the field

Care is a world leader and innovator with time lapse technology. We published the world's first Atlas of Time Lapse Embryology and delivered over 50 publications and presentations worldwide.

Industry Recognition

- The National Technology Healthcare Award for Caremaps-AI

- Achievement award from The Royal College of Pathologists



Caremaps-AI - more details:

Award winning accuracy

Caremaps-AI is built on around half a billion images of embryos. It enables more accurate and consistent embryo selection than our embryologists can. It assesses, predicts and ranks the chance of each embryo becoming a baby.

Detailed insights about your embryos

Caremaps-AI analyses the patterns and timings of embryo development recorded using time lapse images. These indicate embryo quality and potential. Your embryologist can explain this in more detail for you.

Uninterrupted culture; embryos develop without disturbance for assessment

Caremaps-AI is a non-invasive technique which allows us to view detailed photographs and videos of your developing embryos without removing them from the protective environment of the incubator.

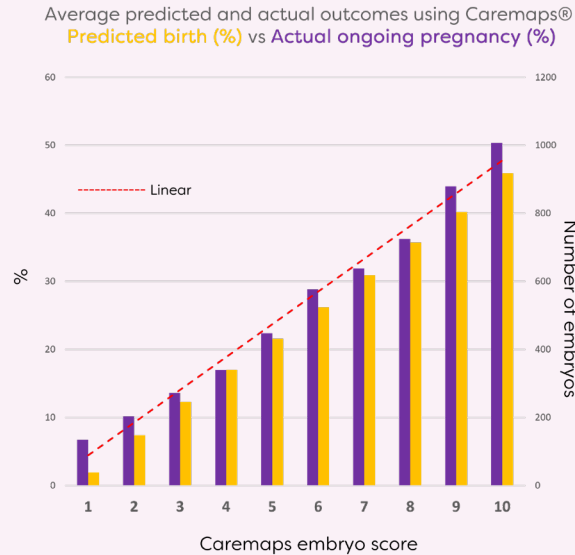
Video download of transferred embryo(s)

You will be able to download the video(s) of your embryo from the Care Patient Portal at the end of your treatment.

The benefits of Caremaps-AI

Care scientists have developed embryo selection models which rank an embryo's potential of achieving a live birth.

(These results are for patients of all ages)



World first embryo rating data – published 2018 (Time-Lapse Imaging Algorithms Rank Human Preimplantation Embryos According to the Probability of Live Birth: Rbmonline, 2018)

Improved embryo selection

- ✓ Ranking for pregnancy – identifying the embryo with the highest chance of success from a cohort
- ✓ Reducing the time it takes to get pregnant
- ✓ Using the most up to date technology to potentially improve your chance of having a baby



Isabella, our first Caremaps baby

“Care fertility implemented Caremaps over 10 years ago and the recent, award winning enhancement using artificial intelligence, is a remarkable achievement, offering highly accurate and sophisticated embryo assessment and selection. Caremaps-AI is a significant development and can be of value to all patients seeking all types of IVF treatment.”

PROFESSOR ALISON CAMPBELL