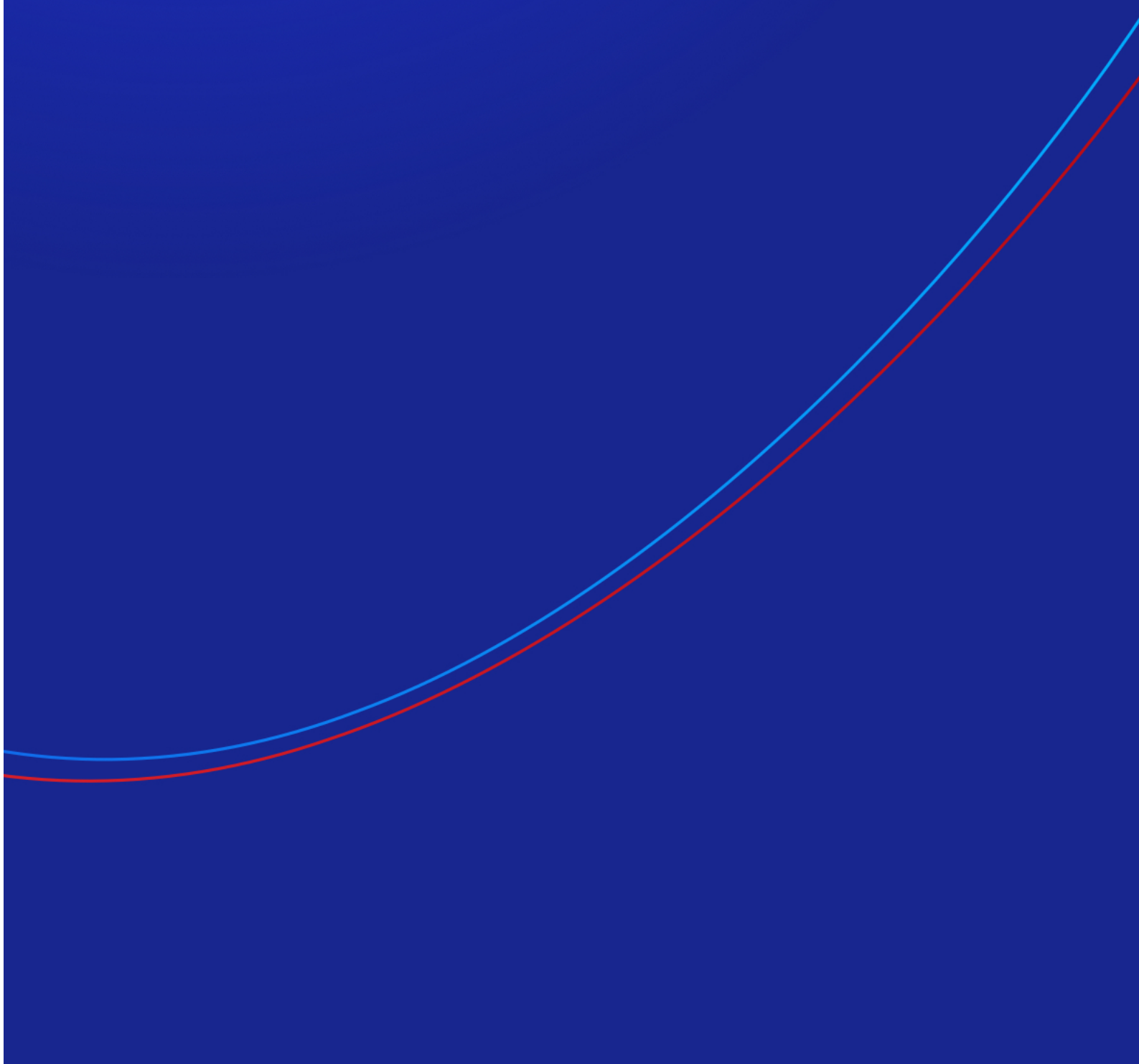




# Correlation Matrix





1. About correlation.....	3
2. Using the Correlation Matrix.....	4
2.1 The matrix.....	4
2.2 Changing the parameters for the calculation.....	5
2.3 Highlighting correlation strength.....	5
2.4 Trade list.....	5

## 1. About correlation

The Correlation Matrix shows the correlation between symbols over a configurable timeframe and number of bars, for example the last 100 H1 bars.

Correlation is measured on a scale from -100 to +100:

- +100 means that the price movements in symbol A and B have been identical (“positive correlation”).
- -100 means that the price movements in symbol A and B have been exactly opposite: A went up when B went down, and vice versa (“negative correlation”).
- 0 means that the symbols have moved independently.

Correlation can have a major effect on your trading risk. For example the following charts show H1 EURUSD and USDCHF over the same time period:



These symbols had very strong negative correlation (about -95). If you were long EURUSD and short USDCHF over this period, or vice versa, then you would have seen very similar profits on both positions. In effect, you did not have two positions: you only really had one position. (If you were long both symbols, or short both symbols, then you probably had a profit on one and a matching loss on the other.)

It is generally advisable to minimise the correlation between your open positions. Otherwise, you are either trading the same price action twice over, or you have two positions which cancel each other out.

The Correlation Matrix helps you to identify symbols with strong or weak correlation.



## 2.2 Changing the parameters for the calculation

You can use the fields at the top of the matrix to choose a timeframe (e.g. H1, D1) and a number of historic bars (e.g. 25, 100, 500).

Correlation between symbols changes over time, and recent correlation may not continue in future. As a general rule, the settings which you choose should be related to how long you intend to keep open positions for. For example, if you expect a position to be open for 24 hours, you might want to look at H1 correlation over the last 50 or 100 bars (roughly 2 or 4 days).

You can choose which symbols to include in the Matrix by using the ... button. This shows the list of symbols which are currently being displayed, and a list of all available symbols.

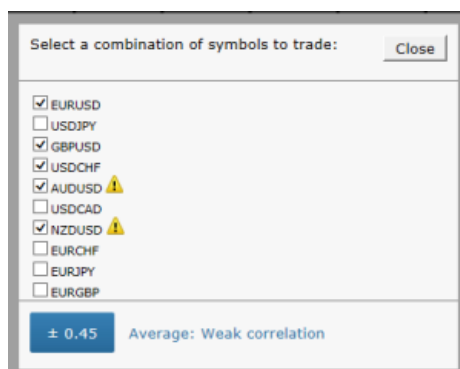
## 2.3 Highlighting correlation strength

The strength field, next to the bars field, lets you highlight different types of correlation in the grid. For example, if you pick "Strong" then the grid highlights correlation above  $\pm 75$ , and grays out all weaker correlations.

## 2.4 Trade list

The Trade List button shows the average correlation between a list of selected symbols – for example, positions you are currently trading, or positions which you intend to open in future.

The list shows the average correlation, and also marks any symbols which have strong correlation with another symbol on the list. In the following example the overall average is weak correlation, but AUDUSD and NZDUSD have strong correlation with each other:





---

Level 16, Tower One  
727 Collins Street  
Melbourne VIC 3008  
AUSTRALIA

Local Call 1300 033 375  
Phone +61 3 9020 0155  
Fax +61 3 8679 4408

[www.pepperstone.com](http://www.pepperstone.com)  
[support@pepperstone.com](mailto:support@pepperstone.com)