

Quick Connectors PG 201 & 210

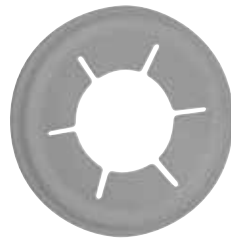
Assembly/Disassembly Procedures



QUICK CONNECTOR TOOLS



Clip Removal Pick



Assurance Cap

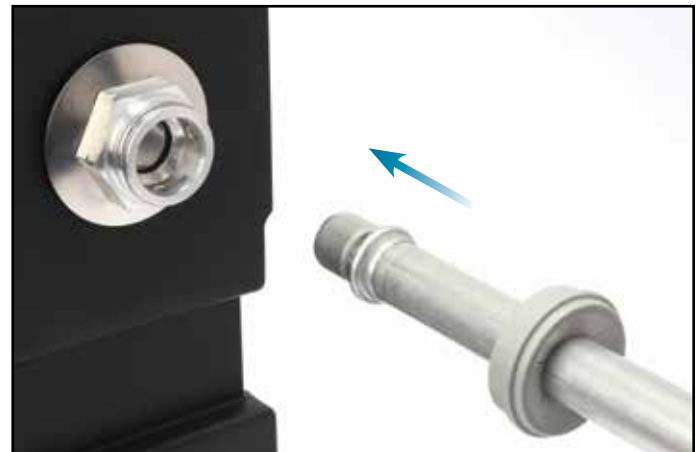


Steel Disconnect Tool



Plastic Disconnect Tool

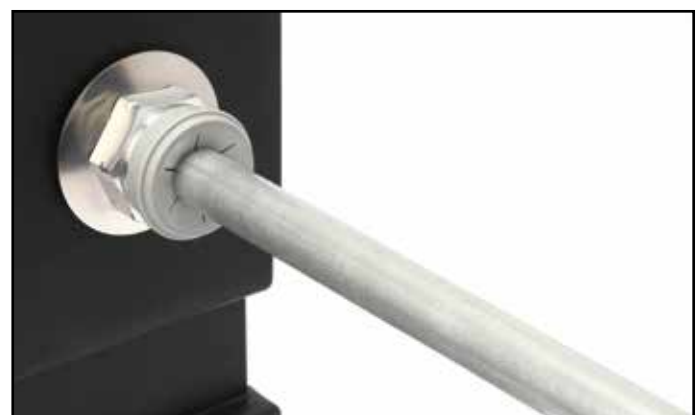
QUICK CONNECTOR AND TUBE ASSEMBLY



1. Align the tube end with the connector while pushing the tube straight into the connector. Ensure tube end is clean and free of debris.



2. Push on the tube until a "click" is heard or felt. Tube is in place when the retaining clip is locked behind the tube flange and the yellow identification band is hidden inside the connector. Pull firmly back on tube to confirm the connection has been properly made.



3. Slide the Assurance Cap (if equipped) down the tube and snap it over the connector until it is fully seated. The Assurance Cap will only snap over connector when the tube is properly installed.

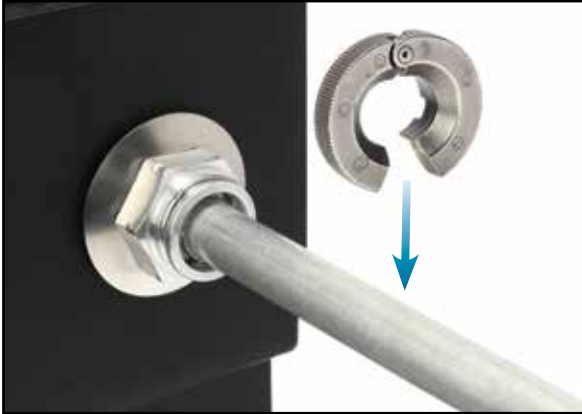
If Assurance Cap does not snap into place, repeat step 2.

QUICK CONNECTOR AND TUBE DISASSEMBLY

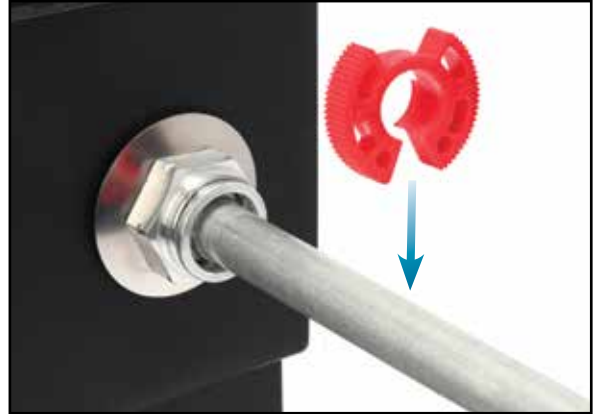
1. Place the disconnect tool onto the tube with the correct fingers facing the connector.

Note: Tool may have either one or two sets of fingers

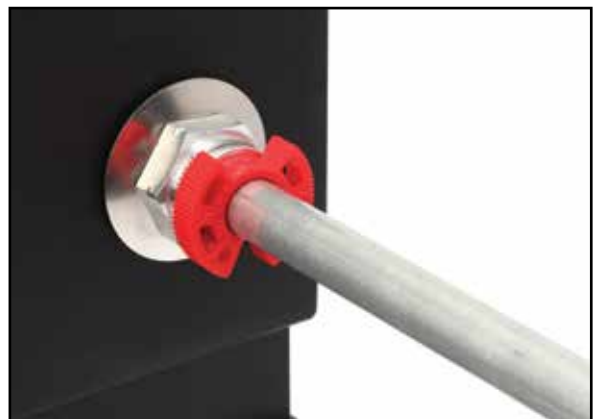
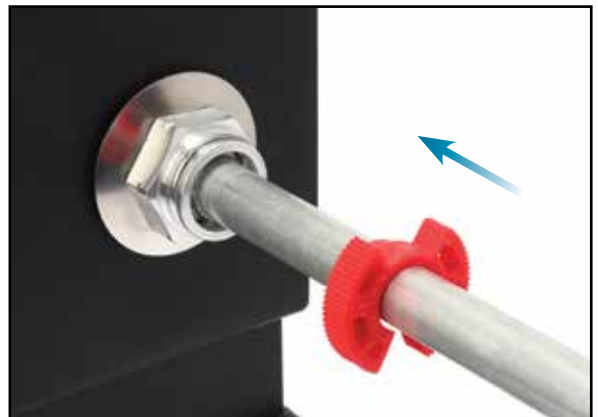
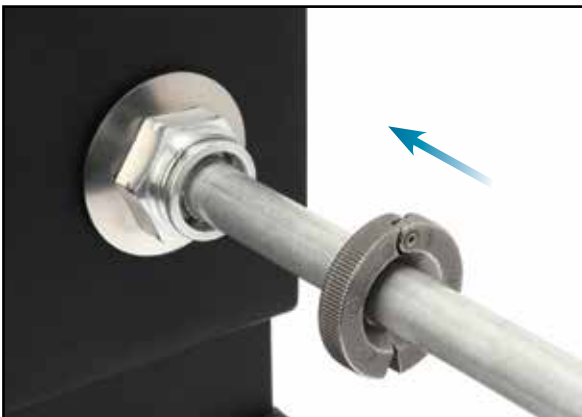
Steel Disconnect Tool



Plastic Disconnect Tool

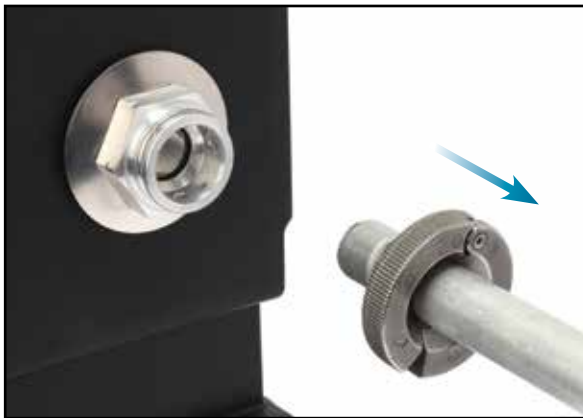
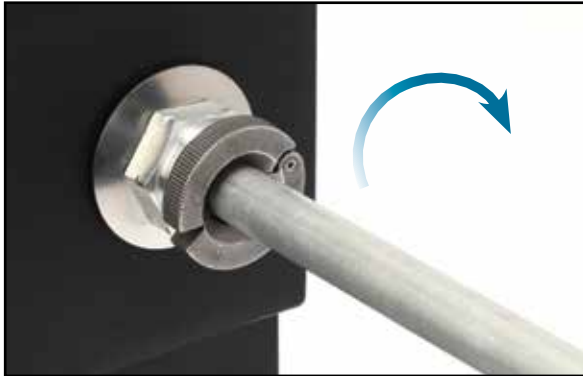


2. Slide the disconnect tool down the tube and engage the fingers with the retaining clip between the 3 clip bumps.

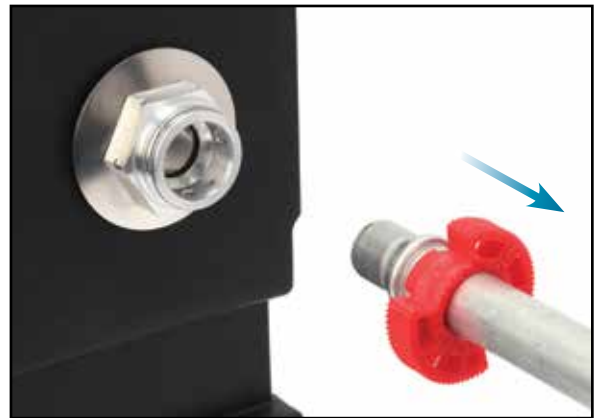
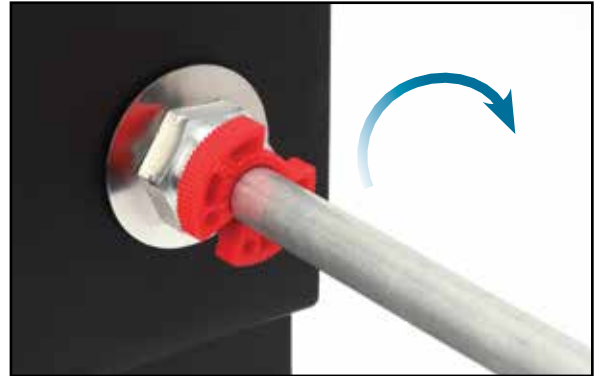


3. Rotate the disconnect tool 60° in either direction to expand the retaining clip. With the retaining clip expanded, hold the disconnect tool against the back of the tube and simultaneously pull the tube out of the connector.

Steel Disconnect Tool



Plastic Disconnect Tool



QUICK CONNECTOR AND TUBE ASSEMBLY/DISASSEMBLY ALTERNATIVE METHOD

Retaining Clip Removal

- Retaining clip can be removed while tube is installed into quick connector

1. Insert pick tool under retaining clip here



2. Rotate retaining clip off connector



3. Pull tube straight back



Retaining Clip Install

- Retaining clip should only be assembled into quick connector before tube installation”
- Oetiker always recommends to replace retaining clip with new retaining clip after removal

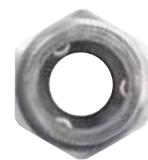
1. Insert retaining clip into connector window.



2. Rotate free end of retaining clip around connector and into window on other side of connector.



3. A properly installed retaining clip will look like this.



For tube reinstallation see page 1.