

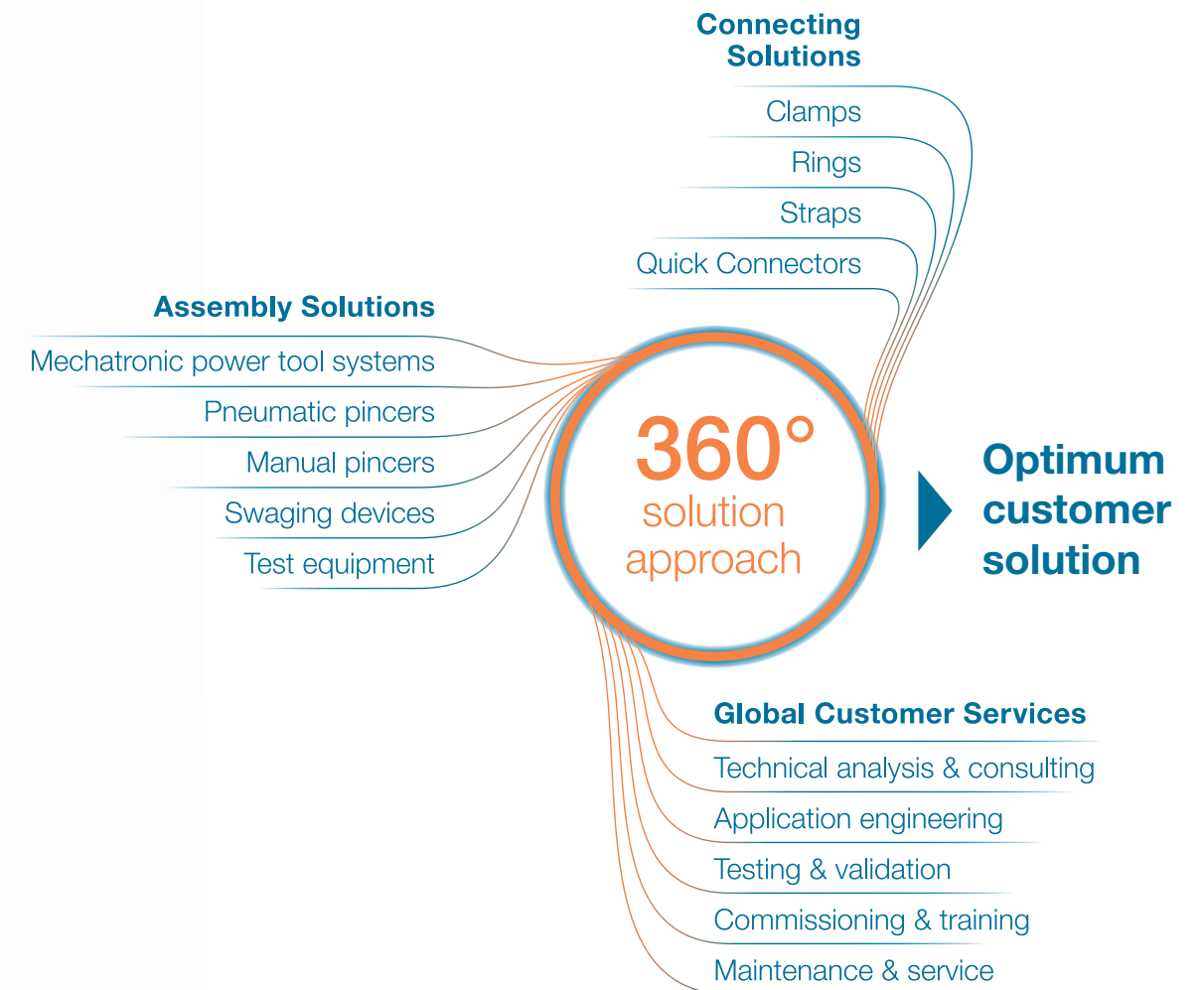
eMobility 360°

Reliable connections
for all phases of development

eMobility 360°

Speed of delivery is crucial for electric vehicle development. We help our customers to drive innovation through all phases of electric vehicle development utilizing our 360° solution approach.

Customers count on Oetiker to provide peace of mind for a wide range of proven eMobility connections. Pioneering reliable fastening components for over 75 years, we design, test and deliver high quality connecting and assembly solutions that are simpler, smarter and stronger than ever before.

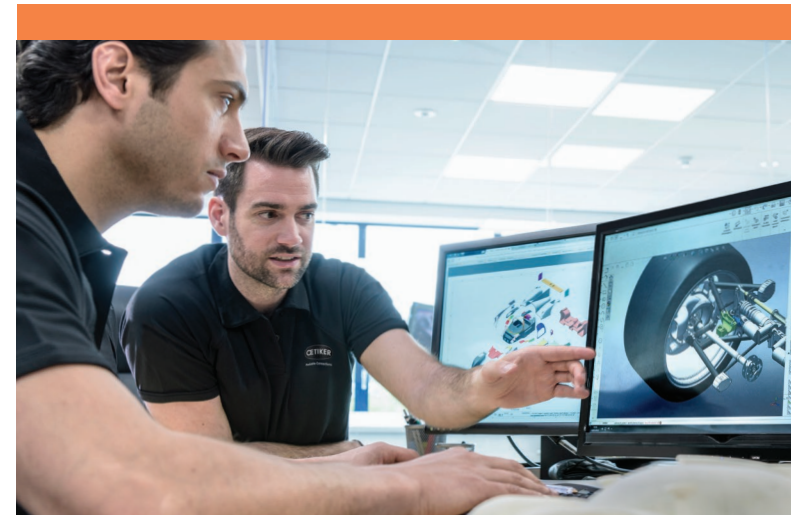


Speed and innovation drive EV development.

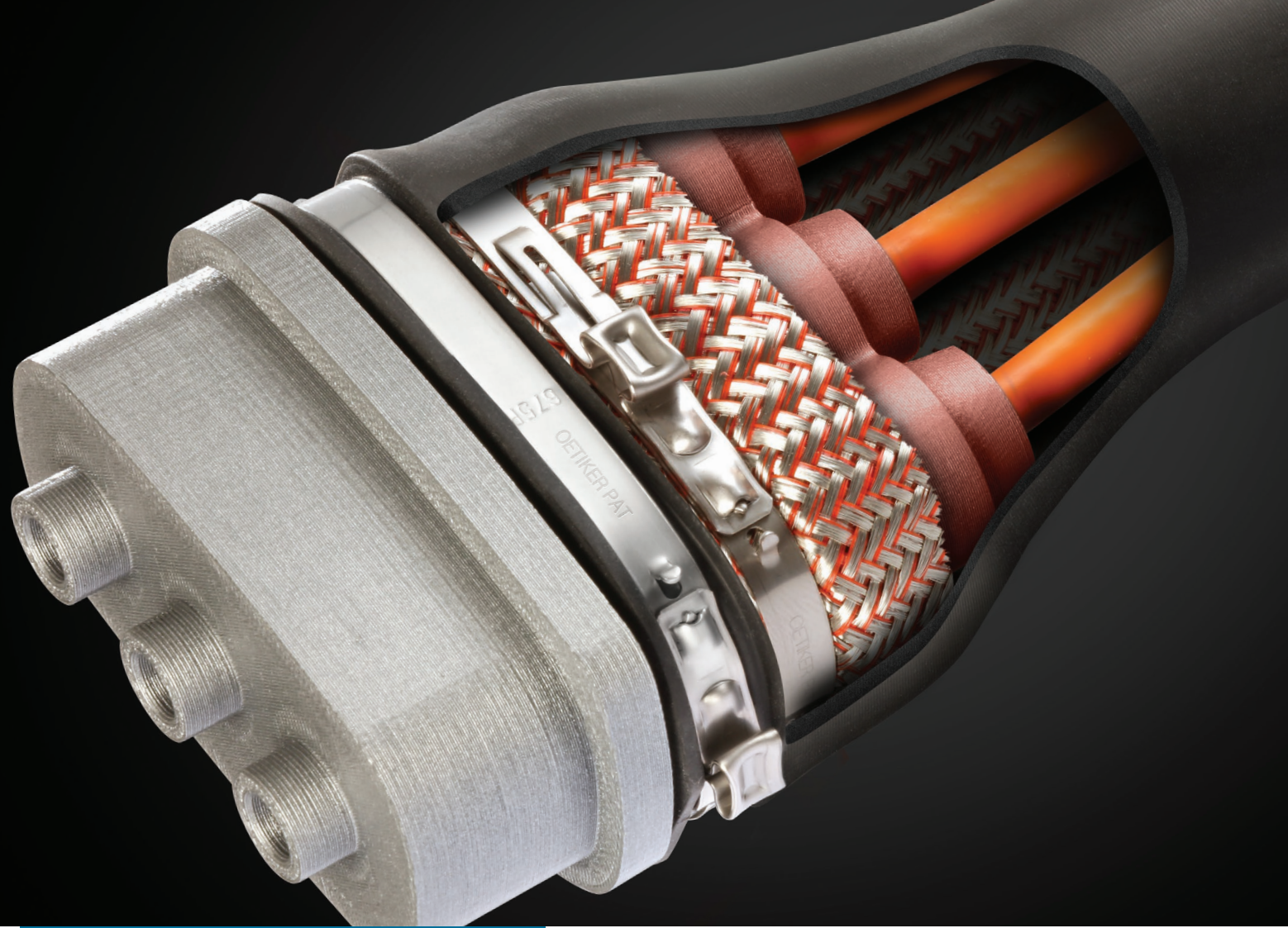
Oetiker's R&D centers collaborate with OEM and Tier partners to provide intelligent concepts, rapid prototypes and custom solutions to meet today's fast paced market demands.

Advanced Engineering

- Consultative engineering
- Rapid prototyping and machining
- Dedicated localized support
- CAD modeling & 3D printing



Dedicated market experts are constantly working on tomorrow's eMobility connecting solutions.



OETIKER | eMobility 360°

Tailored solutions to fit your requirements.

Oetiker's eMobility 360° approach swiftly addresses unique connection specifications, bringing concepts to life quickly to support your electric vehicle development efforts.

Early Development

- Technical design analysis
- Custom-build solutions
- Tailor-made prototypes
- Functional testing



Oetiker product engineers leverage in-house machining, prototyping and testing capabilities to create solutions that customers rely on.

Oetiker solutions, engineered for reliability.

Our quality is confirmed on more than 90 million vehicles annually and featured on virtually every vehicle manufactured globally.

System Integration

- Advanced testing & validation
- Assembly solution engineering
- Tailored assembly tools
- Pre-production support



Oetiker's global team of application specialists are available to provide fast response, local support and application expertise to aid in production validation.



Global footprint and long-term commitment.

With 14 manufacturing facilities worldwide producing more than 2 billion connections per year, Oetiker is the trusted, global, long-term partner for the worlds leading OEMs.

Production

- Global quality assurance
- On-site technical support
- Worldwide production
- Commissioning and maintenance



Oetiker's quality and reliability are backed by more than 2,000 employees in over 30 countries. We provide local support and high volume production capabilities worldwide.

Peace of mind from reliable connections.

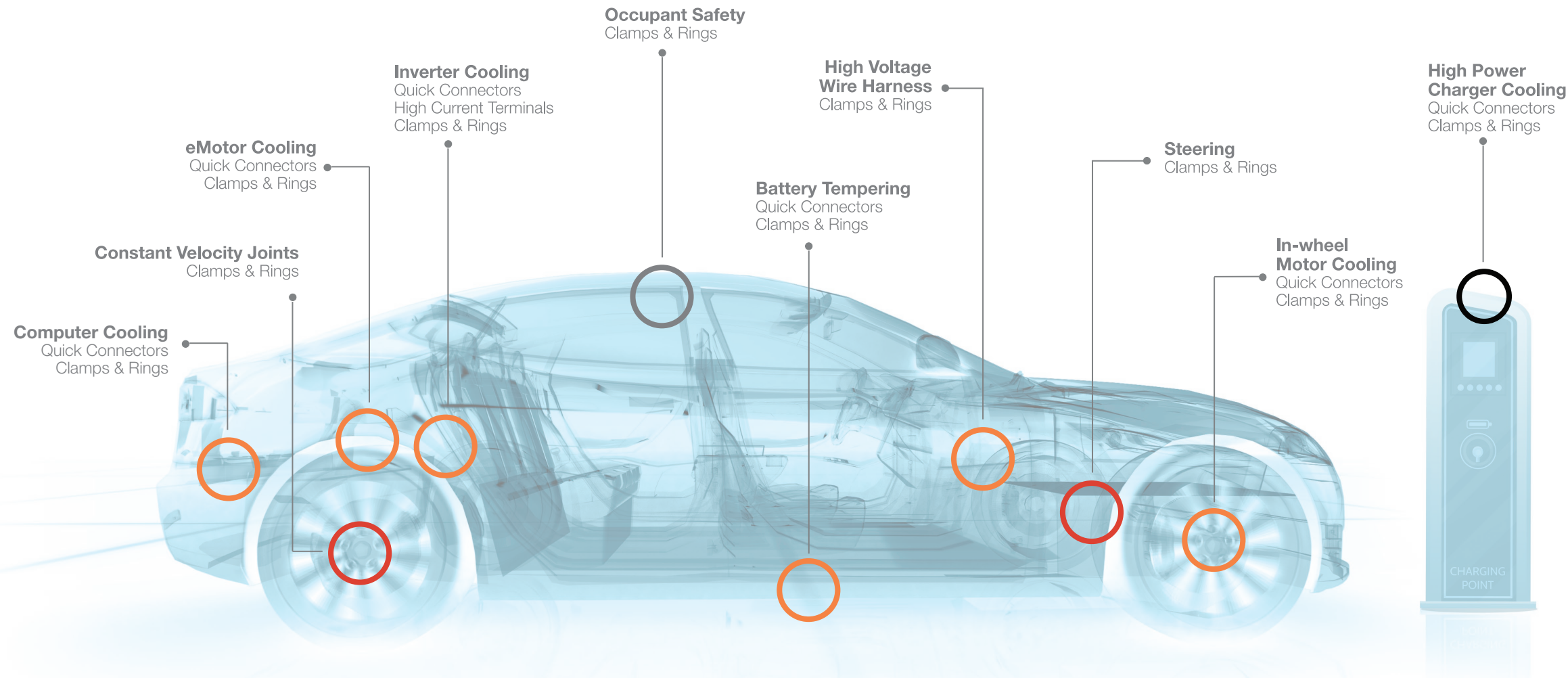
Assembly tool and maintenance support are managed through dedicated in-house service teams, ensuring mission-critical connections are installed properly every time — keeping electric vehicles on the road.

Support and Maintenance

- Tool training and assistance
- Assembly validation
- Maintenance and calibration
- Tool and software upgrades



Oetiker provides installation tool assistance from set up through full scale assembly, including maintenance and upgrade service after production launch.



eMobility 360°

High Performance EV connecting solutions.

Contact your Oetiker team of specialists to learn more about eMobility connecting solutions or visit [Oetiker.com/emobility](https://www.oetiker.com/emobility).

- Drivetrain
- Propulsion
- Occupant Safety
- Infrastructure

