

# Reliable Connections for Irrigation Systems.



Reliable Connections



- Lawn & Garden
- Commercial Irrigation Systems
- Residential Irrigation Systems






The logo features the word "OETIKER" in a bold, white, sans-serif font, enclosed within a black oval shape. A registered trademark symbol (®) is positioned at the top right of the oval.

Reliable Connections

Connecting and  
Assembly Solutions for  
Irrigation  
Systems.

The background of the advertisement is a white surface scattered with various irrigation components and tools. At the top, there are black plastic pipe fittings, including an elbow and a straight section. Below them are several metal hose clamps of different sizes, some with adjustment screws. On the right side, there are two pairs of pliers: one with blue handles and one with black handles. At the bottom, more black plastic fittings and a long black pipe section with a clamp are visible. The overall composition is clean and professional, highlighting the products and tools used in irrigation systems.

Irrigation systems require robust and leak-free hose connections. Oetiker provides customers with the Peace of Mind that their connecting components are strong, easy to install, and ensure reliable installation.

For almost a century, Oetiker's innovative hose and tubing connections and installation tools have been used throughout the industry. Our expertise in high-quality clamps, rings, and assembly tools supports customers in various irrigation systems such as polyethylene pipe irrigation applications. We are the trusted, long-term partner for Irrigation companies worldwide.





## PEACE OF MIND

Oetiker clamps and assembly tools are designed to work together to deliver consistent leak-free connections for irrigation systems.

## IRRIGATION CONNECTIONS FOR POLYETHYLENE PIPE



### 1-Ear Clamps with Mechanical Interlock 155

155 stainless steel  
10.5 – 116.0 mm

- **Clamp Ear:** fast and simple installation
- **Dimple:** increases clamping force



### Irrigation Service Clamp Kit

Item No. 18500144

Kit comes in a compact carry case that contains assorted sizes of Oetiker stainless steel, 1-Ear Clamps with Mechanical Interlock and one Oetiker manual installation pincer.

#### Kit Contents:

Qty.	Size Ref. (mm)	Item No.
20 ea.	198	15500011
40 ea.	210	15500012
72 ea.	271	15500016
60 ea.	331	15500020
12 ea.	425	15500027
6 ea.	485	15500031
1 ea.	Single Action Pincer, Standard Jaws	14100396



### StepLess® Ear Clamps, next generation 193

193 stainless steel  
24.5 – 120.5 mm

- **360° StepLess®:** uniform compression and surface pressure
- **Closed interlock:** high radial loads, smooth outer contour
- **Security hook:** prevents unintended opening during transport



### StepLess® Ear Clamps 167

167 stainless steel  
10.5 – 120.5 mm

- **Narrow band:** concentrates transmission of clamping force, less weight
- **360° StepLess®:** uniform compression and uniform surface pressure



### Worm Drive Clamps 126 & 177

Conforms to SAE J1508 Type "F"

10.0 – 178.0 mm

- **Reliable:** high-quality, holds strong and reusable
- **Worker-friendly:** one size fits various diameters
- **Easily assembled:** with common tools
- **Perforated band:** rectangular notch design

**Material 126:** Stainless Steel and Plated Parts  
**Screw:** 5/16" hex-head, plated carbon steel  
**Band:** 1/2" band width, 201 stainless steel  
**Housing:** 201 stainless steel

**Material 177:** All Stainless Steel Parts  
**Screw:** 5/16" hex-head, 410 stainless steel  
**Band:** 1/2" band width, 201 stainless steel  
**Housing:** 201 stainless steel



### Worm Drive Clamps 126 & 177

Conforms to DIN 3017 Standard

8.0 – 390.0 mm

- **Reliable:** optimum sealing, multi-range connecting
- **Worker-friendly:** installation with common tools, reusable
- **Durable:** enhanced surface pressure and sealing brought by curled edge

#### Material 126

**W2 Band & Housing:** stainless steel (Material No. 1.4016 / UNS S43000)  
**Screw Type:** hexagon-head cross, recess (Phillips), zinc-plated steel

#### Material 177

**W3 All parts stainless steel** (Material No. 1.4016 / UNS S43000)  
**Screw Type:** hexagon-head, standard screwdriver slot

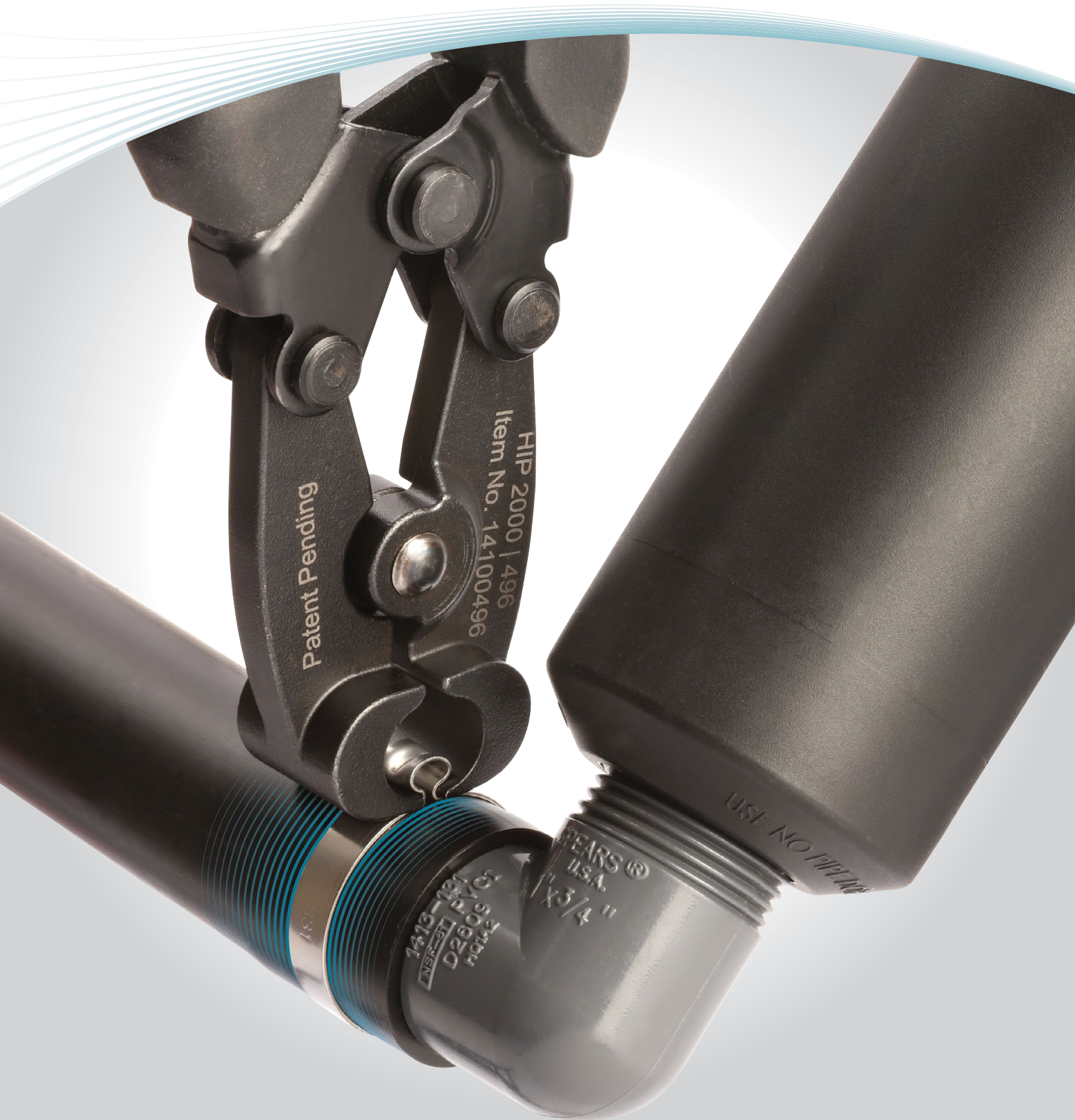
**W4 All parts stainless steel** (Material No. 1.4301 / UNS S30400)  
**Screw Type:** hexagon-head, standard screwdriver slot

Please **contact** an Oetiker representative for a complete range of product options.



## ASSEMBLY & DISASSEMBLY SOLUTIONS FOR EAR CLAMPS

Genuine Oetiker hand tools have become the industry standard in irrigation assembly and are preferred by professional installers worldwide.



## HAND INSTALLATION PINCERS

### Compound Action Pincers

- Designed to provide high closing force
- Robust jaw pivots for increased durability
- Ergonomic grips for better hand comfort and power
- **Curved Handles** fit the palm better and are advantageous for smaller hands
- **Standard Jaws Pincers** can be used where radial access to the clamp is not restricted
- **Side Jaws Pincers** can be used in parallel or perpendicular position where radial access to the clamp is restricted

Item No.	Tool Description
14100496	HIP 2000   496 <b>Standard Jaws</b> , Straight Handles
14100497	HIP 2000   497 <b>Standard Jaws</b> , Curved Handles
14100498	HIP 2000   498 <b>Side Jaws</b> , Straight Handles
14100499	HIP 2000   499 <b>Side Jaws</b> , Curved Handles

### Single Action Pincers

- Strong closing force
- Economic design
- **Standard Jaws Pincers** can be used where radial access to the clamp is not restricted
- **Standard Jaws, Extra Reach** Pincers have longer handles, which provide better access to clamps in hard to reach locations
- **Side Jaws Pincers** can be used in parallel or perpendicular position where radial access to the clamp is restricted

Item No.	Tool Description
14100396	HIP 1000   396 <b>Standard Jaws</b>
14100426	HIP 1000   426 <b>Standard Jaws</b> , Extra Reach
14100446	HIP 1000   446 <b>Side Jaws</b>

### SMART Tool

#### Sensor Monitored Assembly Repair Tool

- Innovative force monitored clamp closing tool
- Three closing forces, ensuring a proper closure
- Force indication, with light and vibration signals

Item No.	Tool Description
14100637	Sensor Monitored Assembly Repair Tool

## DISASSEMBLY TOOLS

### Compound Action Hand Clamp Cutters

- Specially designed to remove ear clamps utilizing the "No-Crimp™" jaws
- Quick and easy ear clamp cutting
- Safest method of clamp removal

Item No.	Tool Description
14100516	HCC 2000   516 Hand Clamp Cutter, Ergo Handles
14100519	HCC 2000   519 Hand Clamp Cutter, Soft Handles

## TUBE CUTTER

### Pro Spec Hand Tube Cutter

- Replaceable V-shaped blade for straight cuts
- Blade stores in jaws when locked
- Ergonomic curved handle
- Replacement blades available: Item No. 14100506

Item No.	Tool Description
14100504	HTC 500   504 Pro Spec Hand Tube Cutter

Please [contact](#) an Oetiker representative for a complete range of product options.

Assembly & Disassembly  
Videos



# 360° Solution Approach.

## Driving Innovation.



Oetiker helps customers drive innovation through all phases of development by utilizing our 360° solution approach. Pioneering reliable fastening components for over 80 years, we design, test and deliver high quality connecting and assembly solutions that are simpler, smarter and stronger than ever before.