

CrossSeal® Low Profile Clamps

298



CrossSeal®



StepLess®



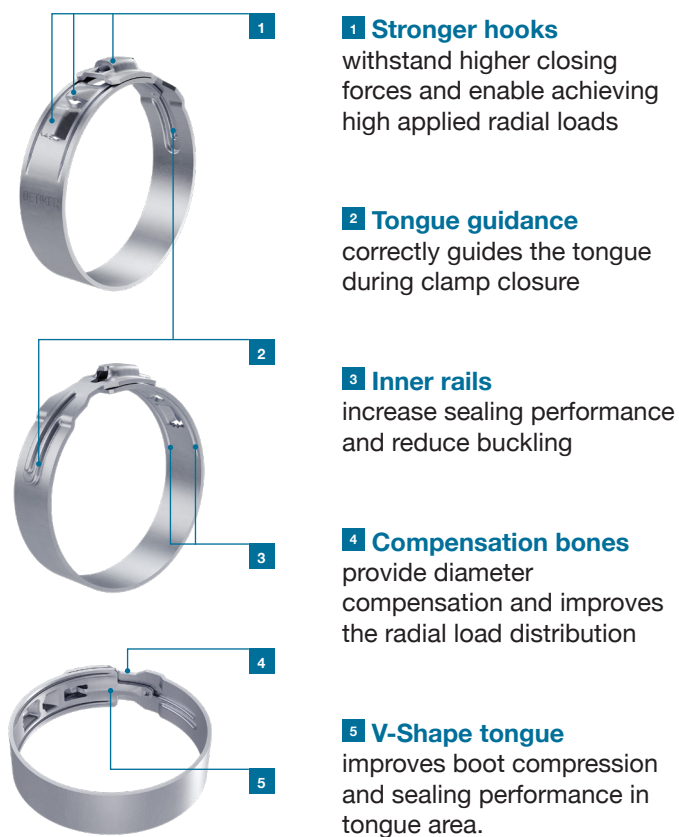
Product description

The CrossSeal® Low Profile Clamp is a lightweight, collision-resistant clamp that provides a robust and uniform 360° seal. Its compact geometry enables high space efficiency in constrained driveline environments. The PG 298 combines a low-profile design with the sealing performance required for Constant Velocity Joint (CVJ) boot applications, while maintaining straightforward handling for assembly line operations.

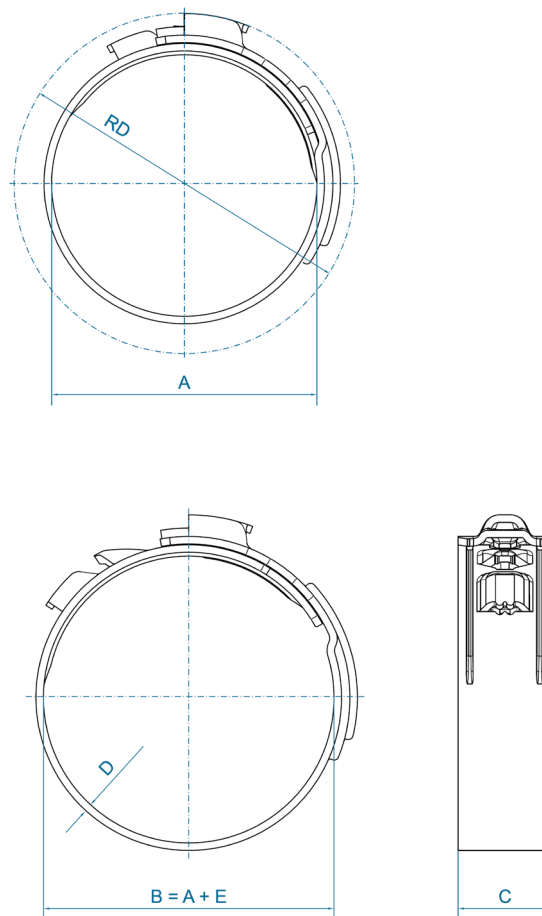
Intended use

This clamp is intended for reliable CVJ boot retention at the small end while minimizing overall installation height in driveshaft systems.

Features



Technical drawing



Technical data

Material/Material features

Stainless steel – 1.4301+2B/UNS S30400 2B

Corrosion resistance

According to DIN EN ISO 9227 ≥ 1000 hours

Series PG 298 (all measurements in mm)

Size range	Layout	Width x Thickness	Graduation	Diameter reduction*
27.0-31.0	Small	10.0 x 0.8	0.5	3.0
31.1-40.0	Large	10.0 x 0.8	0.5	3.0

Specific diameter can only be supplied when appropriate minimum quantity is ordered.

*Diameter reduction = delivery (open) diameter - nominal (closed) diameter

Key to dimensions

Symbol	Description	Unit/Formula
A	Nominal (closed) diameter	mm
B	Delivery (open) diameter	mm
C	Width	mm
D	Thickness	mm
E	Diameter reduction	mm
RD	Theoretical max. rotation diameter	RD = \emptyset to be clamped + 9.6mm

Assembly solutions

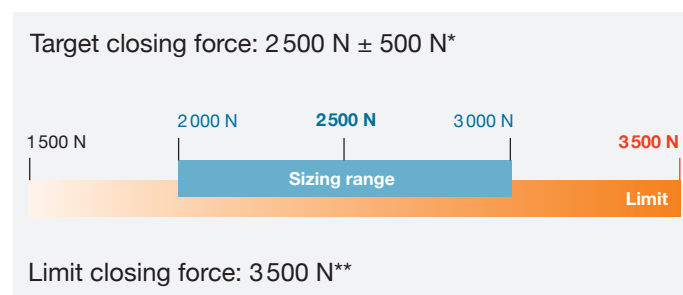
Automated closing tool (electro-pneumatically controlled)

EPC01 (Control Unit)	contact Oetiker sales
HO 7000 EL/ELT (Pneumatic Pincer)	contact Oetiker sales
Pincer head HO EL-50-298-TOC	13902969
Calibration set for SKS01	13902976*
Calibration set for fCAL 1	32100054*
*includes	
Force calibration support guide	13902974
Gap calibration support guide	13902975

Manual closing tool

Jaw kit 298 for torque wrench	14200703
Torque wrench	14100098

Closing forces



*The nominal (closed) clamp diameter must be selected to ensure a closing force of 2 500 ± 500 N

**The limit closing force represents the maximum allowed (limit) closing force. Operation of the clamp at closing forces approaching the 'limit closing force' is therefore not recommended. To ensure reliability, functional tests should be carried out on multiple assemblies.

Disassembly solutions

Disassembly pincer for PG298/292	14100534
Jaws PG 298/292	14200022