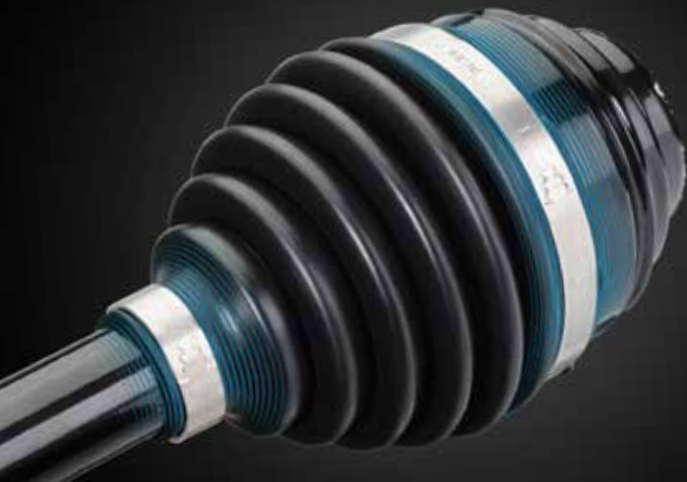


Multi Crimp Rings Puzzle Lock Design 150 - Aluminum

Ultimate lightweight,
low profile connection



Passenger
Cars

Driveshaft Systems



Reliable Connections

Multi Crimp Rings Puzzle Lock Design 150 - Aluminum

Ultimate lightweight,
low profile connection

The ForceTree[®] puzzle lock design allows for a complete, 360° material cross section, providing constant, uniform circumferential compression.

Oetiker Multi Crimp Rings 150, with the ForceTree[®] Puzzle Lock design, are a lightweight, low profile connection that is optimal for driveshaft applications requiring minimum space and no imbalance on rotating parts.

The Multi Crimp Rings Puzzle Lock Design 150 offers expanded diameter reduction, allowing for more clearance and the ability to use one clamp size for multiple projects.

Applications

- Driveshaft (Constant Velocity Joint)

Multi Crimp Rings Puzzle Lock Design 150 - Aluminum



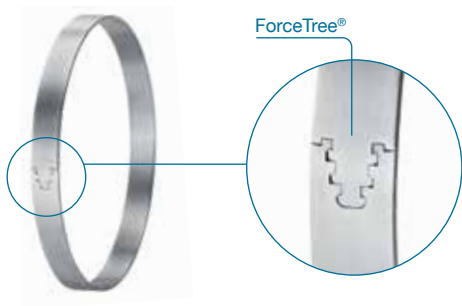
ForceTree®



StepLess®

Benefits

- High sealing performance
- Highly space-efficient flat design
- Lightweight and burr-free band
- Large diameter range



Full material cross-section over 360°: constant pressure applied uniformly around the circumference

Flexible diameter reduction: high, adjustable surface pressure, very easy to install

Nominal diameter up to 120 mm: suitable for universal application, in particular for thermoplastic components

Low installed height: minimum space requirement, no imbalance on rotating parts

Aluminium: reduced weight

Specially formed strip edges: reduced risk of damage to parts being clamped

Technical Data

Material

Aluminum, material EN AW-5754

Corrosion resistance according to DIN EN ISO 9227
PG 150 ≥ 400h

	Size range	Material dimensions
MCR 1015 AL	Ø 24.5 – Ø 120.0 mm	10.0 × 1.5 mm
MCR 1020 AL	Ø 65.0 – Ø 120.0 mm	10.0 × 2.0 mm

Diameter reduction *

Ø 24.5 – Ø 26.5 mm: max. up to Ø 21.9 mm

Ø 27.0 – Ø 40.0 mm: max. 5 mm

Ø 40.5 – Ø 120.0 mm: max. 6 mm **

* The diameter reduction is dependent on the nominal diameter of the MCR.

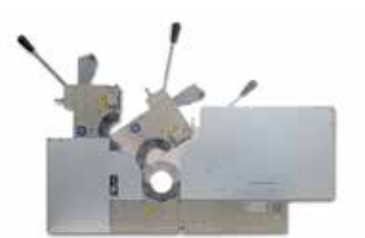
** Bigger diameter reduction are available for >=65mm diameter. Please consult your local Oetiker Sales Representative for further details.

Installation

Two-Piece Swaging Tool Oetiker Compact & Compact XL



ELS Swaging Tool



Oetiker Multi Crimp Rings should be assembled using the swaging tools developed for them. This ensures correct assembly and the best possible product performance. The compact, vertically opening design of the Two-Piece Swaging Tool for Multi Crimp Rings allows for separation of the two halves for optimum accessibility and automatic latching of the tool.

Benefits

- Available interlocking swaging segments guarantee 360° compression
- Fully reliable assembly process
- Electronic process data tracking capability

Peace of Mind

from our 360° solution approach

For a driveshaft system to perform at its best it needs a connection that is lightweight and space efficient. We provide our customers with clamps and rings that address these performance demands, as well as meet specific assembly requirements.

As the number one provider of connections for driveshaft systems, customers count on Oetiker to provide peace of mind for a wide range of proven automotive connections. Pioneering reliable fastening components for over 75 years, we design, test and deliver high quality connecting and assembly solutions that are simpler, smarter and stronger than ever before.

