

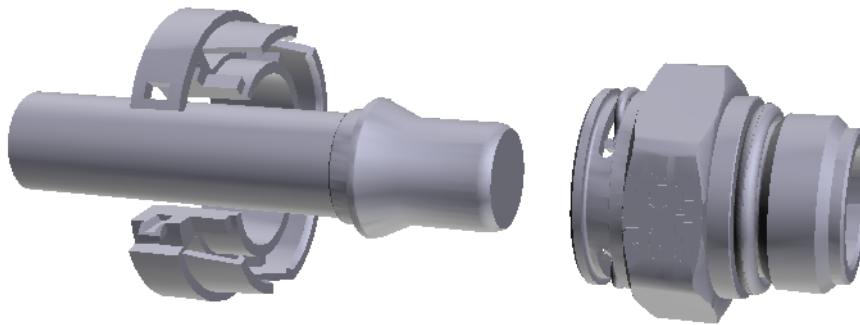
Quick Connector - Locking Assurance Cap System

Assures tubes and quick connectors are fully seated.



Product Description

The Locking Assurance Cap System serves as a device to provide 100% confidence that tubes are fully seated into quick connectors and features a durable secondary launch.



Views

Click below links for position views.

[ON TUBE POSITION VIEW](#)

[LOCKED POSITION VIEW](#)

3D VIEW

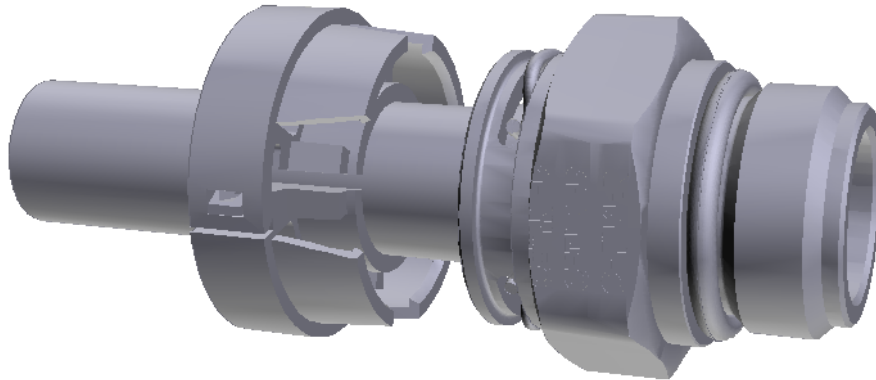
TOP VIEW

PROFILE VIEW

SIDE VIEW



On Tube Position (Locking Assurance Cap System)



Tier

Installed after tube forming operation

Durable latch and hinge mechanism

Reliable and secure

Easy installation on tube line set

Controlled tight inner diameter allows Locking Assurance Cap to remain securely in place on tube

Features

Robust Latch and Hinge Mechanism:
Easy and reliable installation over tube

Nylon Polyamide Material: Inherent
corrosion and temperature resistance
and lightweight material

[PREVIOUS VIEW](#)

[LOCKED POSITION VIEW](#)

3D VIEW

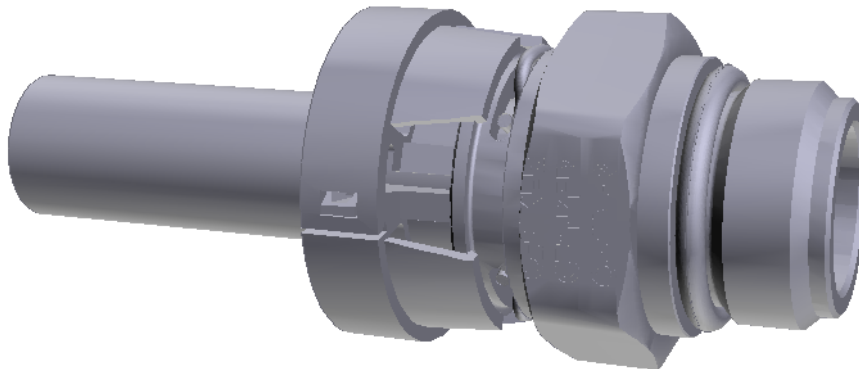
TOP VIEW

PROFILE VIEW

SIDE VIEW



Locked Position (Locking Assurance Cap System)



Assembler

Tactile and audible feedback ensures the connection has been made

Low installation and insertion force

Eliminates false positive connections and secondary verification operations

Black, natural, and gray color options available for identification

Features

Assurance Ridge: Prevents installation to unassembled quick connector and tube interface

Guiding Pins: Self-aligning tabs for easy installation with quick connector

Nylon Polyamide Material: Inherent corrosion and temperature resistance and lightweight material

Machined Locking Groove: Seats and holds retaining teeth for secondary latch mechanism

3D VIEW

TOP VIEW

PROFILE VIEW

SIDE VIEW

[PREVIOUS VIEW](#)