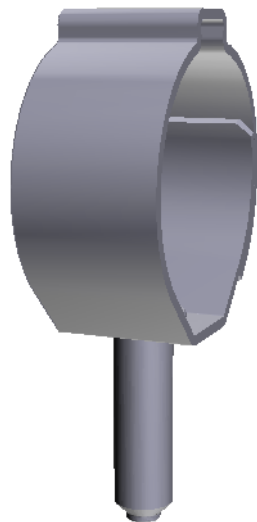


# 1-Ear Clamps with Stud 103

Recommended for Occupant Safety Systems



## 180° Configuration



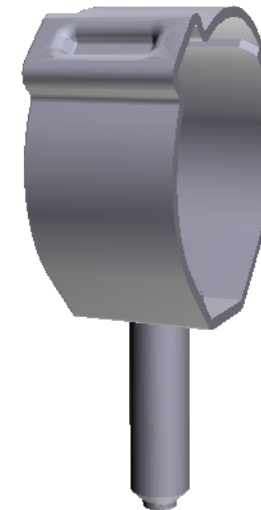
3D VIEW

TOP VIEW

PROFILE VIEW

SIDE VIEW

## 45° Configuration



3D VIEW

TOP VIEW

PROFILE VIEW

SIDE VIEW

### Features

**Space saving:** ear position of 180° or 45° offers easy assembly

**Flexible:** easily adjustable clamp positioning

**Made to measure:** various diameters available with M5 or M6 studs for standard size inflators

**Strong:** high strength low alloy material with high retention properties + good corrosion resistance

### Benefits

- Secure and reliable connection for inflators
- Flexible design
- Safe and easy assembly
- Space efficient