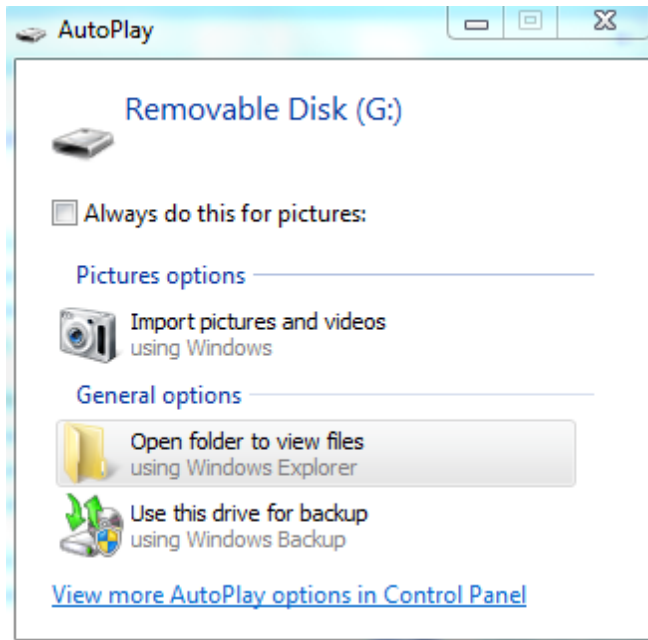


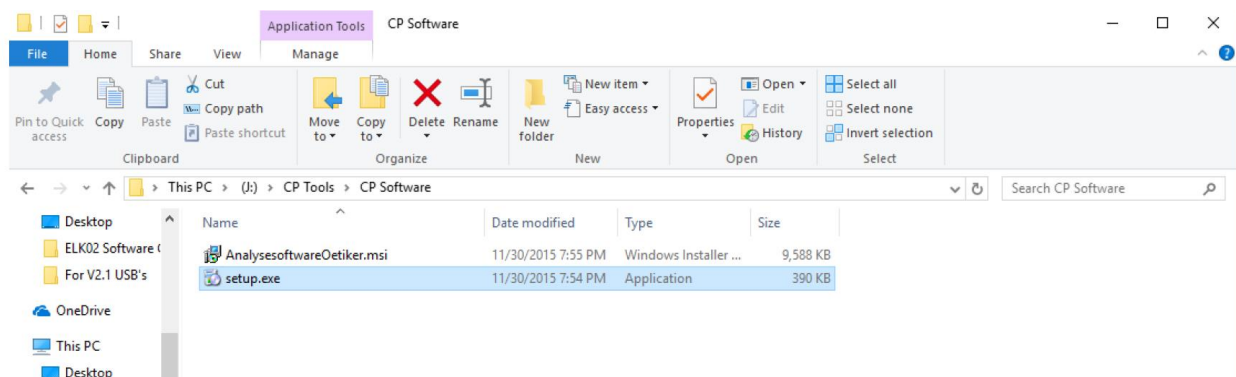
# CP Software Installation



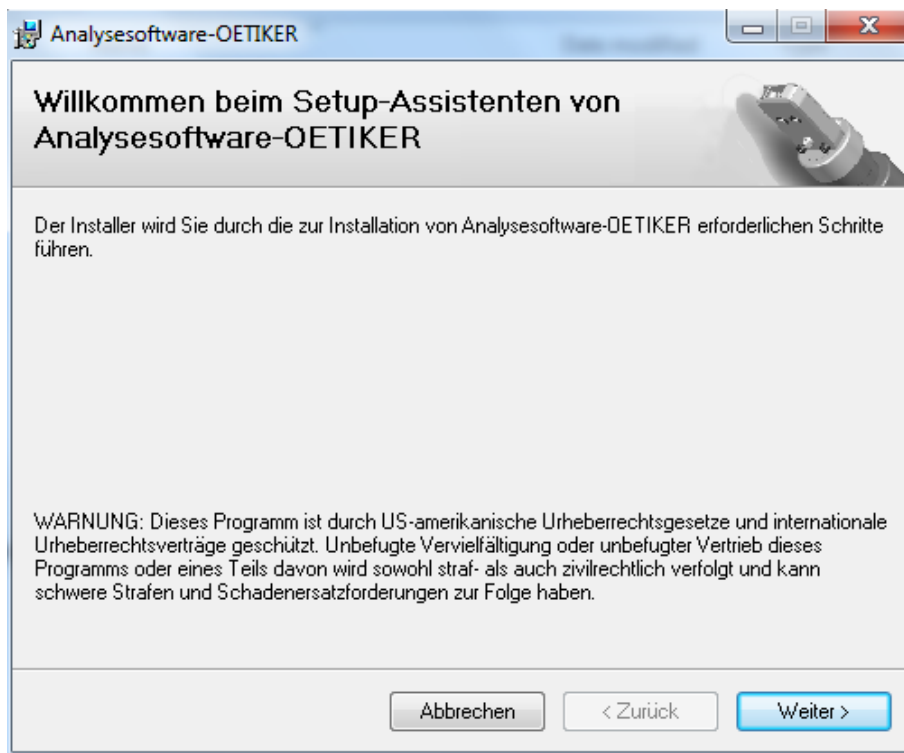
**Step 1:** Insert your USB stick/CD that came with the CP tool. A prompt should come up. Select “Open folder to view files”. If no prompt, simply navigate to the drive.



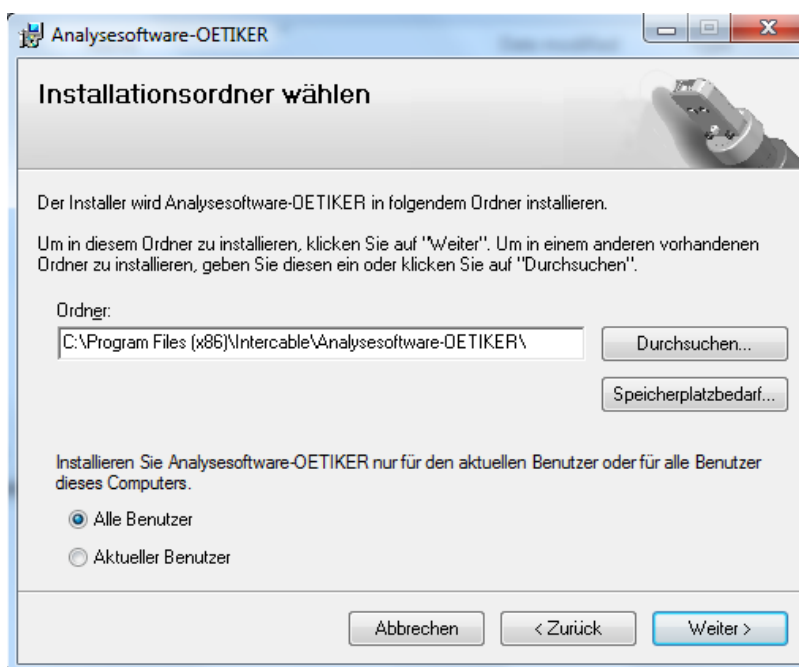
**Step 2:** Open the folder “CP Software”, then double click on “setup.exe” and agree to let program make changes. Contact your IT department if you require permissions to install software.



**Step 3:** Select “Weiter” to continue to the next screen.



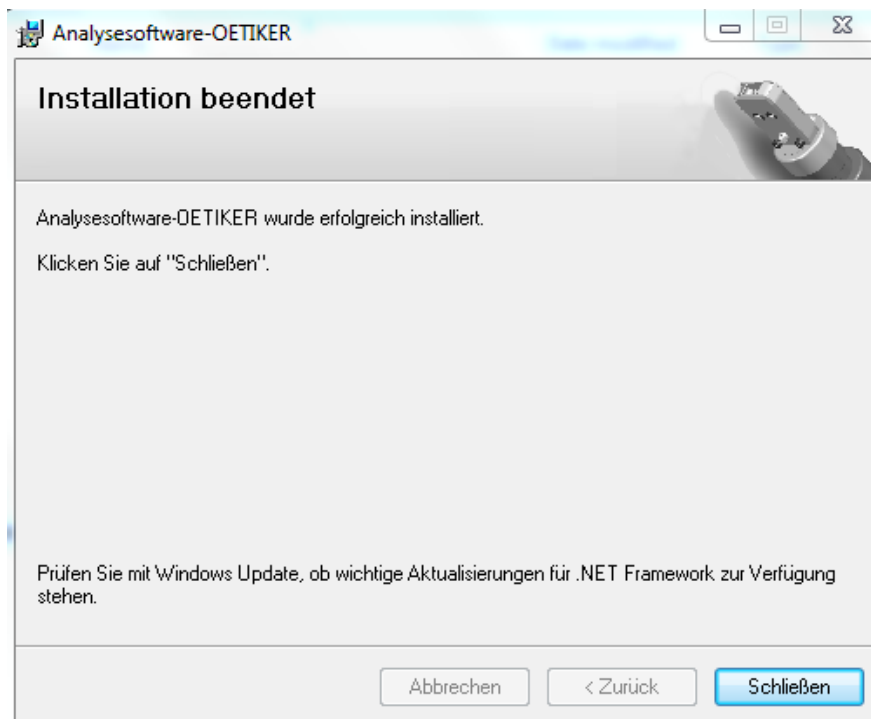
**Step 4:** If you wish to change your file path, click on “Durchsuchen...” and select your file path. If you are ok with the default file path given, simply click on “Weiter” to continue to the next screen.



**Step 5:** Click on “Weiter” to continue to the next screen.



**Step 6:** Click on “Schließen” to complete the installation. The process will automatically occur and the shortcut should automatically be generated on your desktop.



**Step 7:** Double click the Oetiker Shortcut on your desktop and located on the top right of your screen, you can change the language to English. Plug your tool in, while the software is open and give it 10 seconds to 10 minutes to connect, then see Manual section 5.1.3 for the Calibration guide.

