

Market Outlook Considerations
Week Beginning
March 19, 2018

DISCLAIMER-FOR-EDUCATIONAL-PURPOSES-ONLY

Bobby Coats, Ph.D.
Professor – Economics
Department of Agricultural Economics and Agribusiness
University of Arkansas System
Division of Agriculture
Cooperative Extension Service

Chart Book Index

Market Outlook Considerations for Week Beginning March 19, 2018

Chart Book Index

- Chart 1. \$UST10Y - 10-Year US Treasury Yield, Weekly Chart
- Chart 2. \$UST10Y - 10-Year US Treasury Yield, Daily Chart
- Chart 3. \$UST10Y - 10-Year US Treasury Yield, Daily Chart
- Chart 4. Power Shares US Dollar Index, Weekly Chart
- Chart 5. Power Shares US Dollar Index, Daily Chart
- Chart 6. Power Shares US Dollar Index, Monthly
- Chart 7. EURO Monthly Chart
- Chart 8. Australian Dollar Monthly Chart
- Chart 9. Canadian Dollar Monthly Chart
- Chart 10. Japanese Yen Monthly Chart
- Chart 11. British Pound Monthly Chart
- Chart 12. Dow Jones, Monthly Chart
- Chart 13. Dow Transports Monthly Chart
- Chart 14. S&P 500 Large Caps Monthly Chart
- Chart 15. Nasdaq Composite, Monthly Chart

Continued Next Slide

Chart Book Index

Market Outlook Considerations for Week Beginning March 19, 2018

Chart Book Index

- Chart 16. World less U.S. & Canada Monthly Chart
- Chart 17. Emerging Markets Monthly Chart
- Chart 18. Australia Monthly Chart
- Chart 19. Brazil Monthly Chart
- Chart 20. Canada Monthly Chart
- Chart 21. China Monthly Chart
- Chart 22. Mexico Monthly Chart
- Chart 23. Japan Monthly Chart
- Chart 24. Russia Monthly Chart
- Chart 25. India Monthly Chart
- Chart 26. \$CRB Reuters/Jefferies CRB Index, Weekly Chart
- Chart 27. \$CRB Reuters/Jefferies CRB Index
- Chart 28. \$CRB Reuters/Jefferies CRB Index
- Chart 29. \$WTIC, Weekly Chart
- Chart 30. \$WTIC, Daily Chart

Continued Next Slide

Chart Book Index

Market Outlook Considerations for Week Beginning March 19, 2018

Chart Book Index

- Chart 31. \$WTIC, Monthly Chart
- Chart 32. Soybeans, Weekly Chart
- Chart 33. Soybeans, Daily Chart
- Chart 34. Soybeans, Monthly Chart
- Chart 35. Corn, Weekly Chart
- Chart 36. Corn, Daily Chart
- Chart 37. Corn, Monthly Chart
- Chart 38. Rough Rice, Weekly
- Chart 39. Rough Rice, Daily Chart
- Chart 40. Cotton, Weekly Chart
- Chart 41. Cotton, Daily Chart
- Chart 42. Cotton, Monthly Chart
- Chart 43. Wheat, Weekly Chart
- Chart 44. Wheat, Daily Chart
- Chart 45. Wheat, Monthly Chart

Continued Next Slide

Chart Book Index

Market Outlook Considerations for Week Beginning March 19, 2018

Chart Book Index - Sectors

- Chart 46. Financial Sector, Weekly Chart
- Chart 47. Health Care Sector, Weekly Chart
- Chart 48. Technology Sector, Weekly Chart
- Chart 49. Industrial Sector, Weekly Chart
- Chart 50. Materials Sector, Weekly Chart
- Chart 51. Energy Sector, Weekly Chart
- Chart 52. Utilities Sector, Weekly Chart
- Chart 53. Consumer Staples, Weekly Chart
- Chart 54. Consumer Discretionary, Weekly Chart

Continued Next Slide

***\$UST10Y – 10 Year US Treasury Yield
Weekly, Daily and Monthly Charts***

\$UST10Y 10-Year US Treasury Yield (EOD) INDX

16-Mar-2018

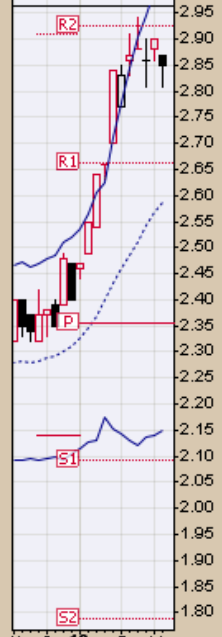
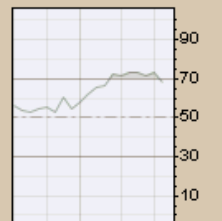
© StockCharts.com

Open 2.87 High 2.87 Low 2.81 Close 2.85 Chg -0.05 (-1.72%)

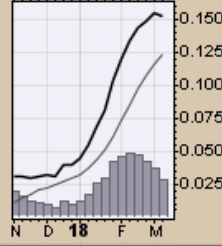
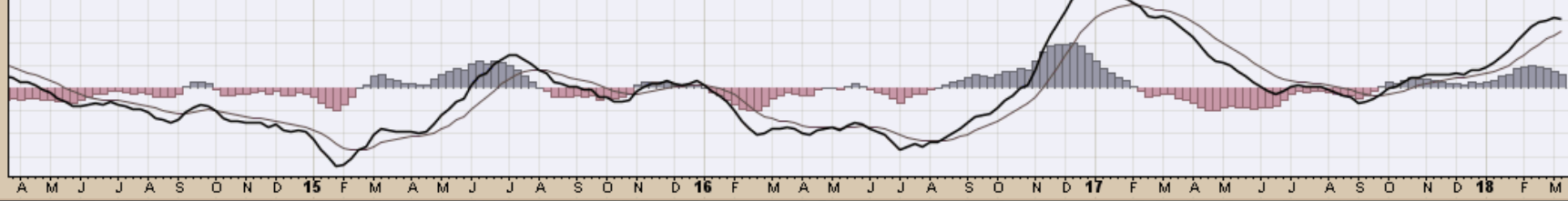
RSI(14) 68.49

CHART 1. \$UST10Y - 10-YEAR US TREASURY YIELD, WEEKLY CHART

\$UST10Y (Weekly) 2.85
BB(20,2,0) 2.15 - 2.59 - 3.03
PIVOTS 1.79, 2.09, 2.36, 2.66, 2.93
Volume undef



MACD(12,26,9) 0.153, 0.124, 0.029



\$UST10Y 10-Year US Treasury Yield (EOD) INDX

16-Mar-2018

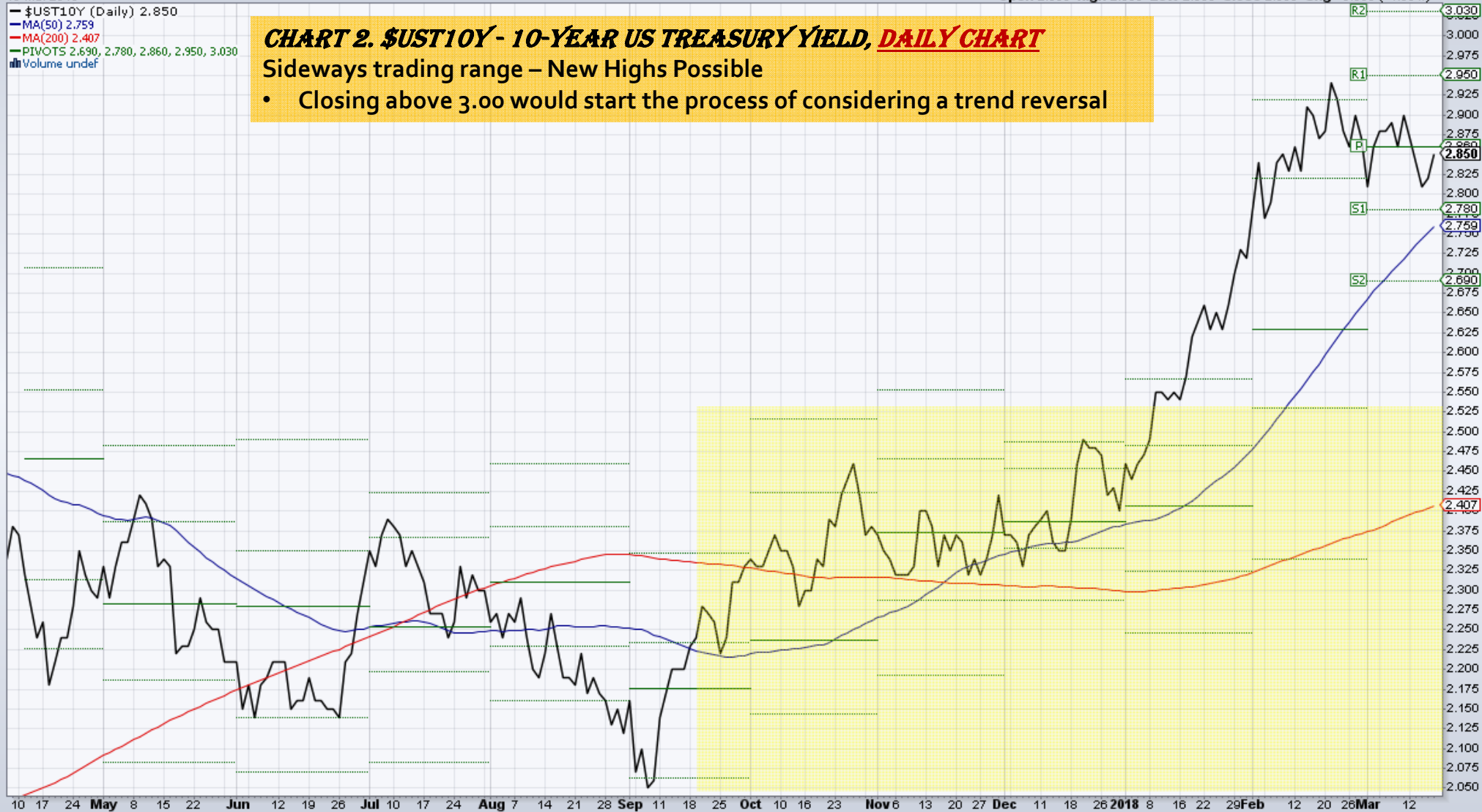
© StockCharts.com
Open 2.850 High 2.850 Low 2.850 Close 2.850 Chg +0.030 (+1.06%) ▲

— \$UST10Y (Daily) 2.850
— MA(50) 2.759
— MA(200) 2.407
— PIVOTS 2.690, 2.780, 2.860, 2.950, 3.030
■ Volume under

CHART 2. \$UST10Y - 10-YEAR US TREASURY YIELD, DAILY CHART

Sideways trading range – New Highs Possible

- Closing above 3.00 would start the process of considering a trend reversal



\$UST10Y 10-Year US Treasury Yield (EOD) INDX

16-Mar-2018

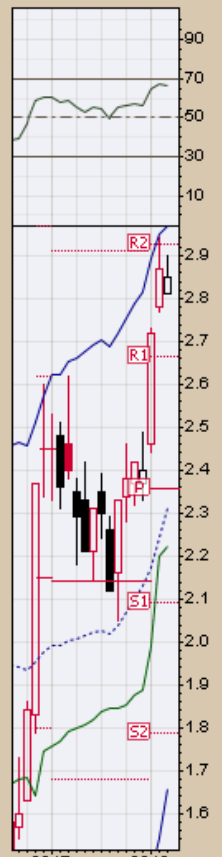
© StockCharts.com

Open 2.81 High 2.90 Low 2.81 Close 2.85 Chg -0.02 (-0.70%) ▼

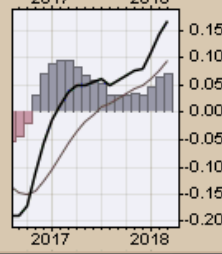
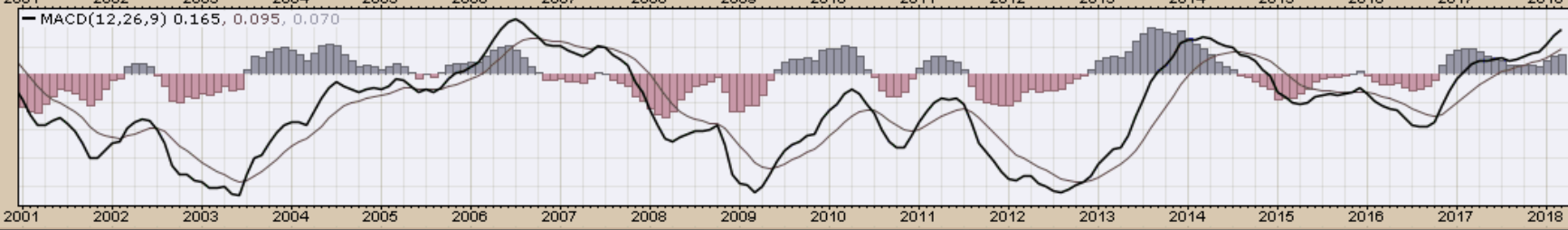
▲ RSI(14) 66.75

CHART 3. \$UST10Y - 10-YEAR US TREASURY YIELD, DAILY CHART

\$UST10Y (Monthly) 2.85
BB(20,2,0) 1.66 - 2.31 - 2.97
PIVOTS 1.79, 2.09, 2.36, 2.66, 2.93
CHANDLR(22,3,0) 2.22
Volume undef



MACD(12,26,9) 0.165, 0.095, 0.070



US Dollar Index
Weekly, Daily and Monthly Charts

\$USD US Dollar Index - Cash Settle (EOD) ICE

© StockCharts.com

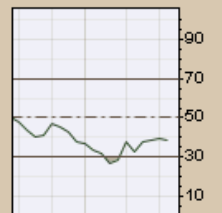
16-Mar-2018

Open 90.07 High 90.17 Low 89.14 Close 89.80 Chg -0.27 (-0.30%)

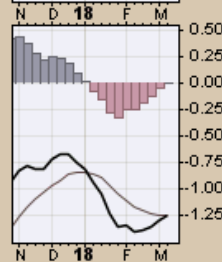
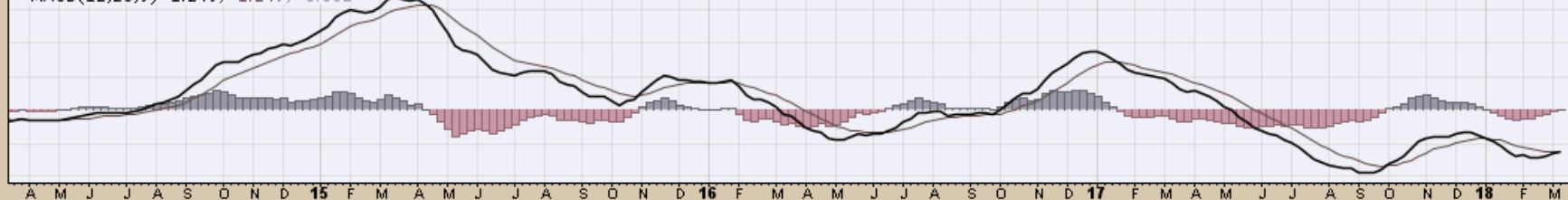
▲ RSI(14) 38.38

● \$USD (Weekly) 89.80
— MA(200) 94.23
— CHANDLR(22,3,0) 91.16
— PIVOTS 82.72, 87.27, 95.54, 100.10, 108.37

CHART 4. U.S. DOLLAR INDEX, WEEKLY CHART



— MACD(12,26,9) -1.249, -1.247, -0.002



\$USD US Dollar Index - Cash Settle (EOD) ICE

16-Mar-2018

© StockCharts.com

Open 89.68 High 89.95 Low 89.45 Close 89.80 Chg +0.12 (+0.13%) ▲

US Dollar Index - Cash Settle (EOD) (Daily) 89.80

BB(20,2,0) 89.21 - 89.85 - 90.49

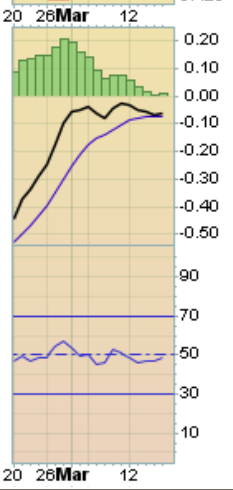
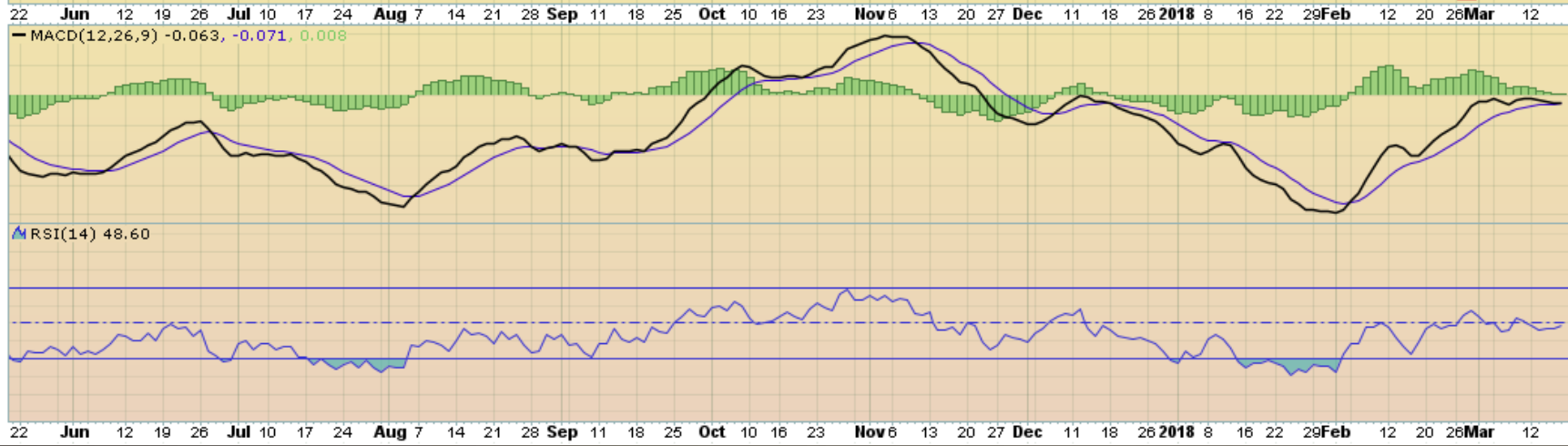
PIVOTS 87.28, 88.92, 89.78, 91.42, 92.28

CHANDLR(22,3,0) 89.17

Volume under



CHART 5. US DOLLAR INDEX, DAILY CHART



\$USD US Dollar Index - Cash Settle (EOD) ICE

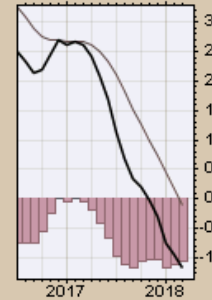
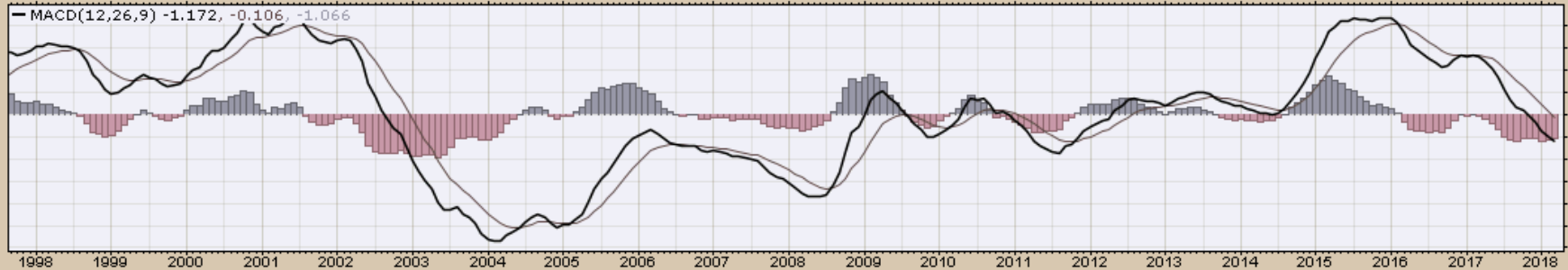
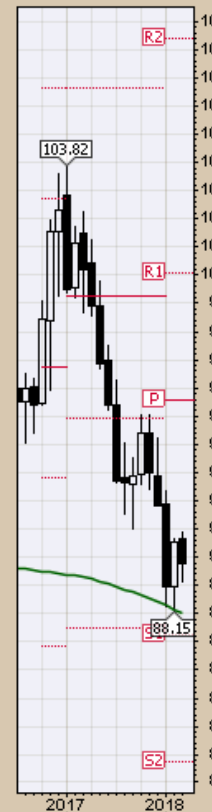
© StockCharts.com

16-Mar-2018

Open 90.65 High 90.89 Low 89.14 Close 89.80 Chg -0.75 (-0.83%)

\$USD (Monthly) 89.80
MA(200) 88.01
PIVOTS 82.72, 87.27, 95.54, 100.10, 108.37

CHART 6. US DOLLAR INDEX, MONTHLY CHART



Select Currency Charts
Monthly Charts

\$XEU Euro - Philadelphia INDX

16-Mar-2018

© StockCharts.com

Open 121.89 High 124.46 Low 121.55 Close 122.96 Chg +0.98 (+0.81%)▲

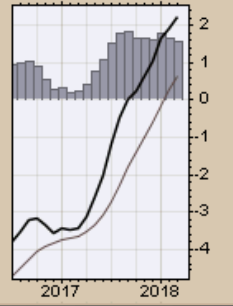
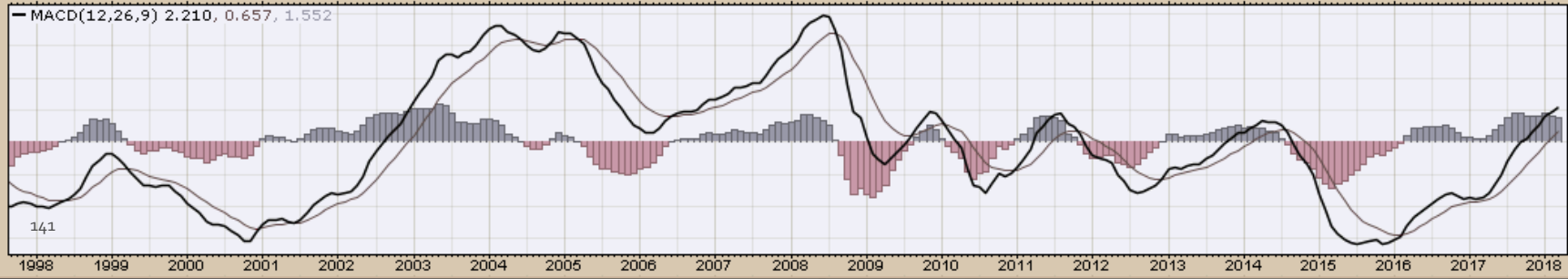
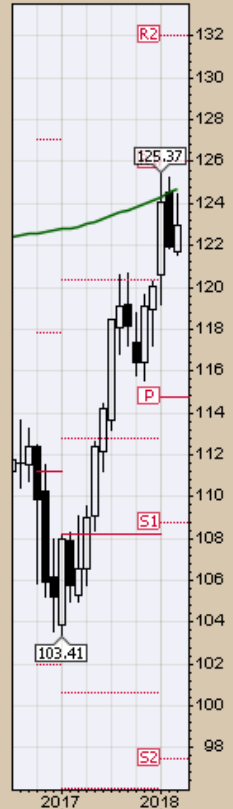
\$XEU (Monthly) 122.96

MA(200) 124.68

PIVOTS 97.44, 108.75, 114.72, 126.02, 131.99



CHART 7. EURO, MONTHLY CHART
• Trend remains up with corrections along the way



\$XAD Australian Dollar - Philadelphia INDX

16-Mar-2018

© StockCharts.com

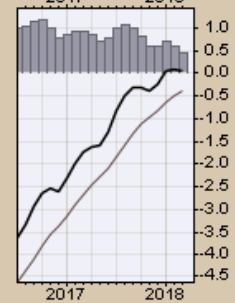
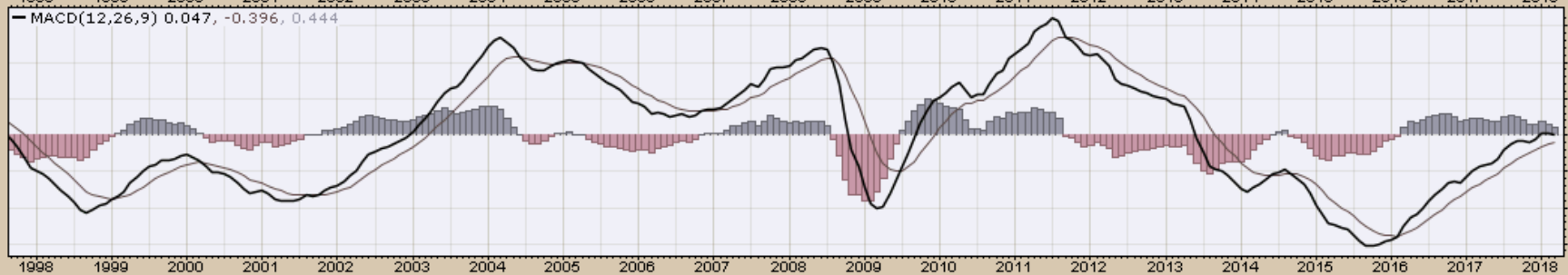
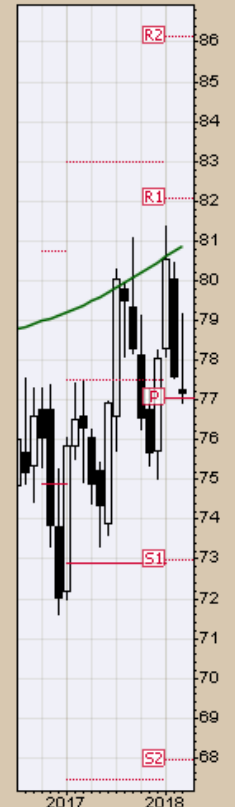
\$XAD (Monthly) 77.17

MA(200) 80.88

PIVOTS 67.93, 72.99, 77.03, 82.08, 86.12

Open 77.27 High 79.17 Low 76.94 Close 77.17 Chg -0.43 (-0.55%)

Chart 8. Australian Dollar, Monthly Chart



\$CDW Canadian Dollar - Philadelphia INDX
16-Mar-2018

© StockCharts.com

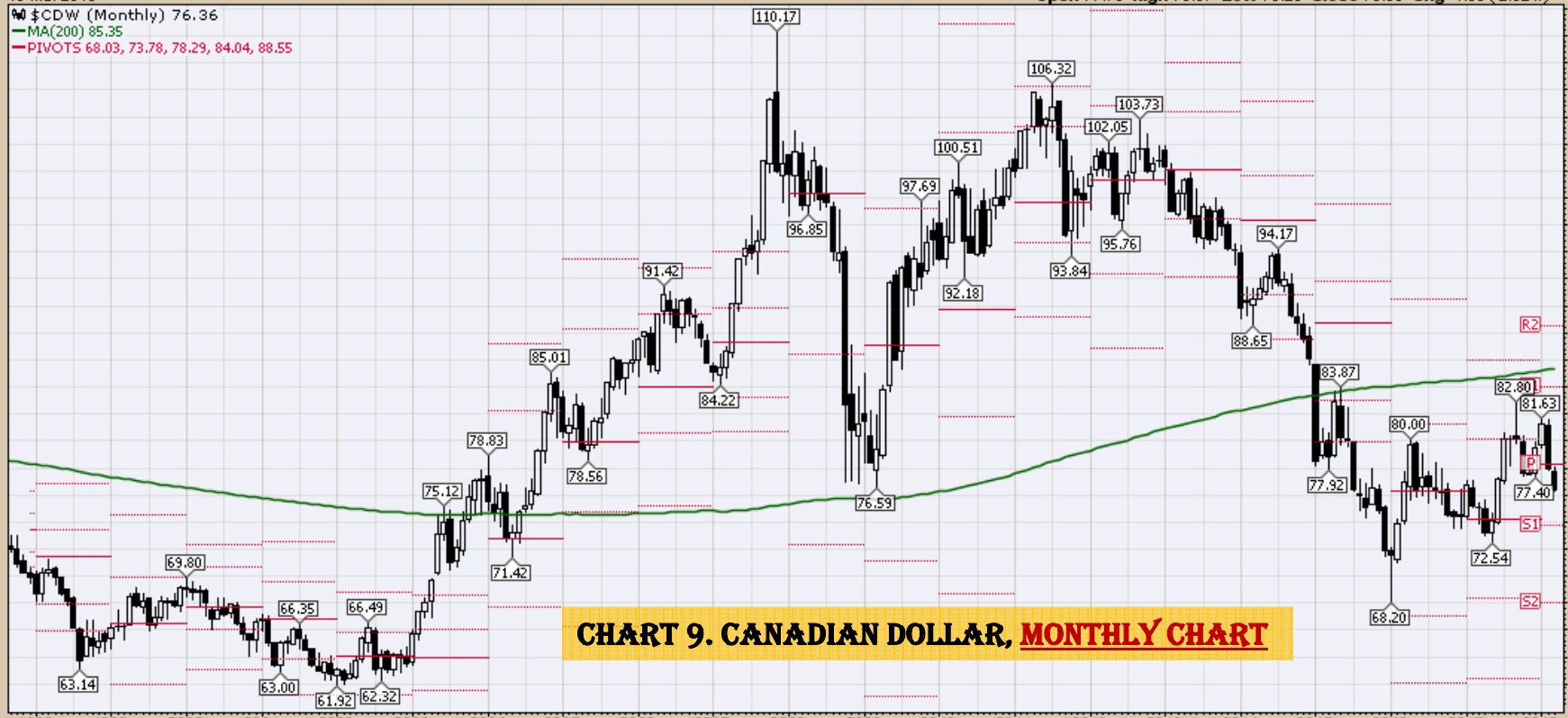
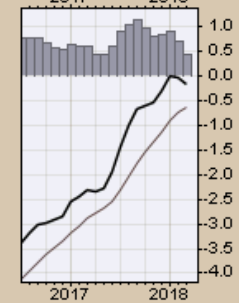
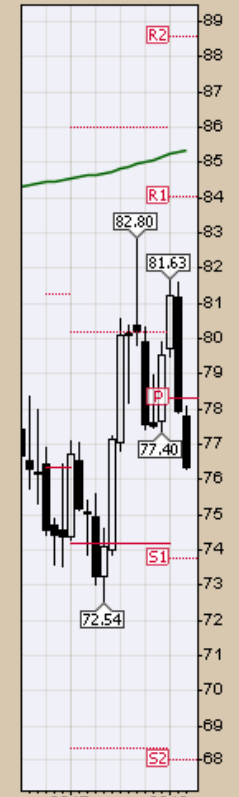
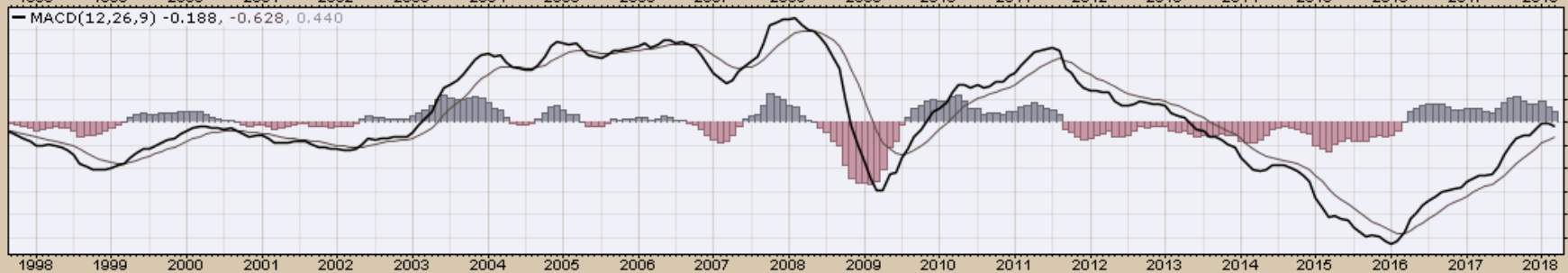


CHART 9. CANADIAN DOLLAR, MONTHLY CHART



\$XJY Japanese Yen - Philadelphia INDX
16-Mar-2018

© StockCharts.com

\$XJY (Monthly) 94.64
MA(200) 96.57
PIVOTS 79.87, 84.30, 88.74, 93.17, 97.61

Open 93.66 High 95.00 Low 93.20 Close 94.64 Chg +0.88 (+0.94%) ▲

CHART 10. JAPANESE YEN, MONTHLY CHART

- Slowly regaining positive momentum



\$XBP British Pound - Philadelphia INDX

© StockCharts.com

9-Mar-2018

Open 137.42 High 139.29 Low 137.12 Close 138.49 Chg +0.86 (+0.63%) ▲

\$XBP (Monthly) 138.49

MA(200) 163.01

PIVOTS 114.49, 124.80, 130.69, 141.00, 146.89

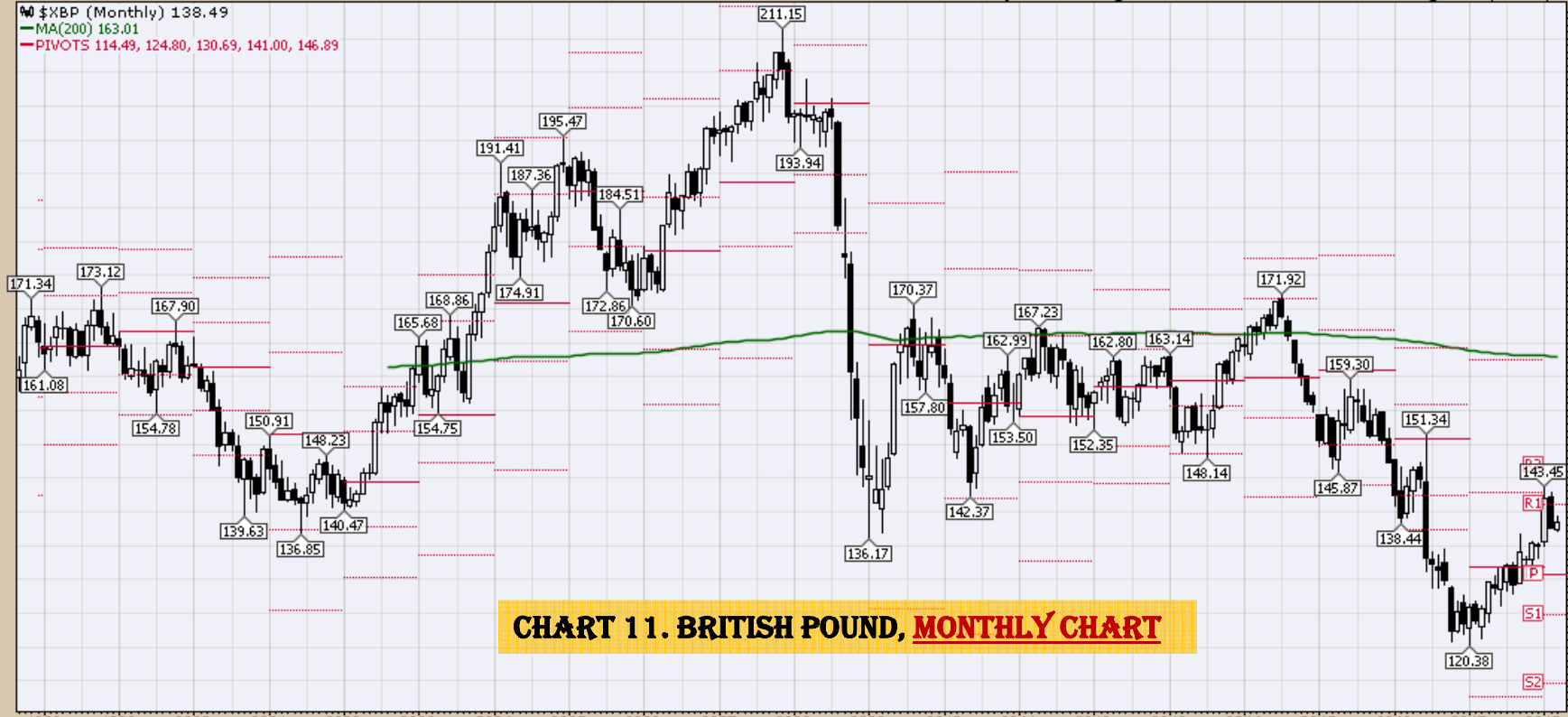
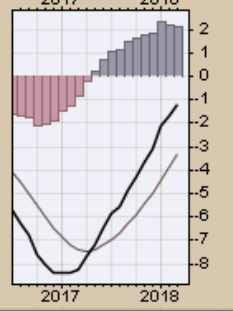
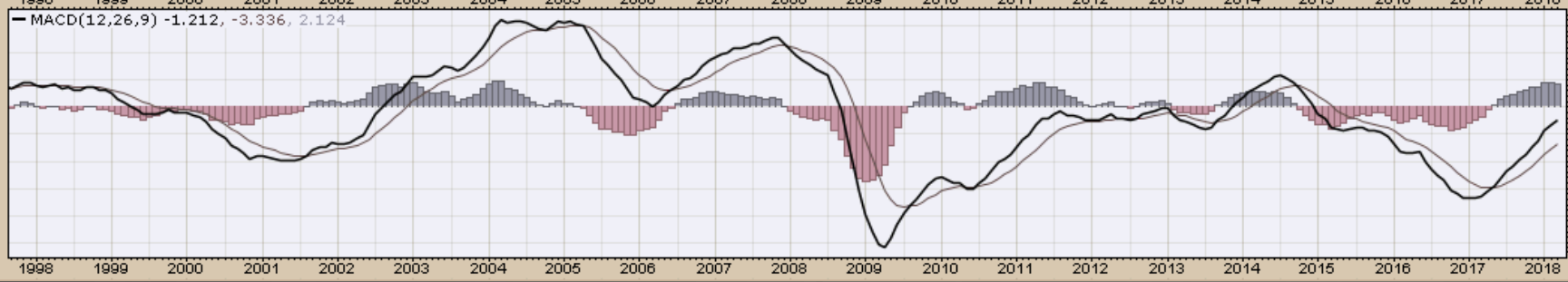
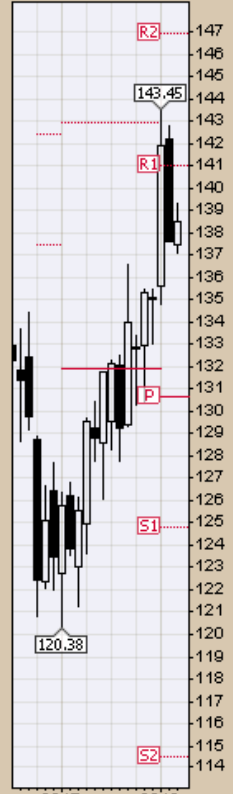


CHART 11. BRITISH POUND, MONTHLY CHART



Select Equity and Transportation Charts
Monthly Charts

\$INDU Dow Jones Industrial Average INDXX

16-Mar-2018

Open 25024.04 High 25449.15 Low 24217.76 Close 24946.51 Volume 5.0B Chg -82.69 (-0.33%)

© StockCharts.com

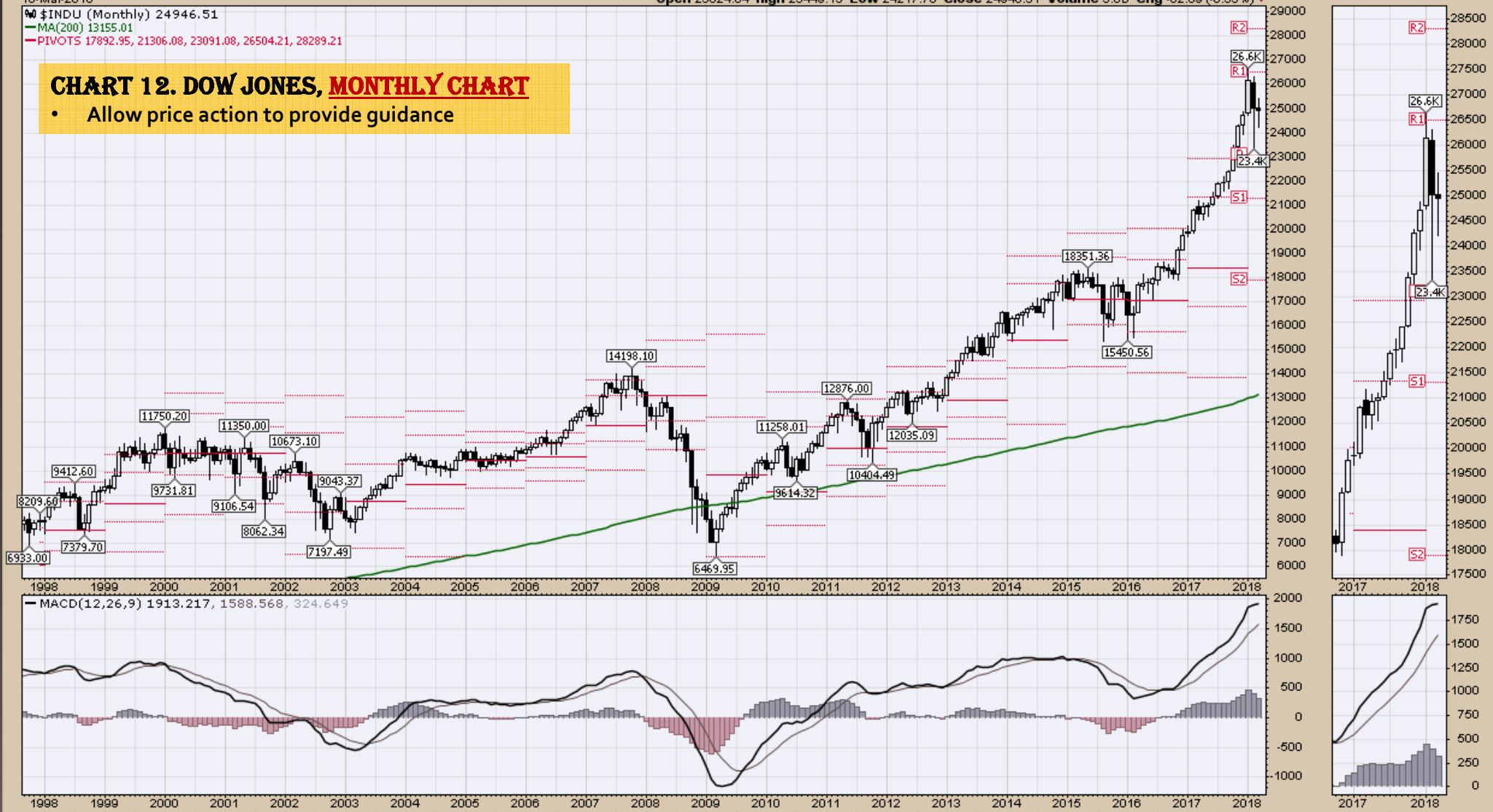
\$INDU (Monthly) 24946.51

MA(200) 13155.01

PIVOTS 17892.95, 21306.08, 23091.08, 26504.21, 28289.21

CHART 12. DOW JONES, MONTHLY CHART

- Allow price action to provide guidance



\$TRAN Dow Jones Transportation Average INDEX

16-Mar-2018

Open 10377.72 High 10837.51 Low 10146.57 Close 10683.82 Volume 627.5M Chg +301.83 (+2.91%)▲

© StockCharts.com

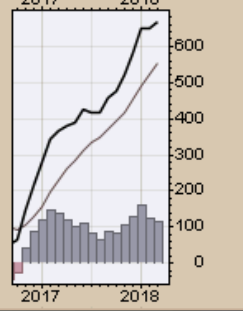
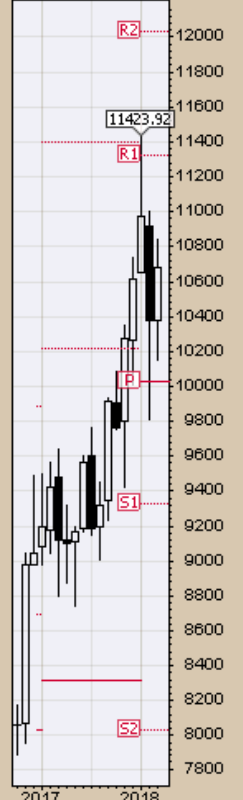
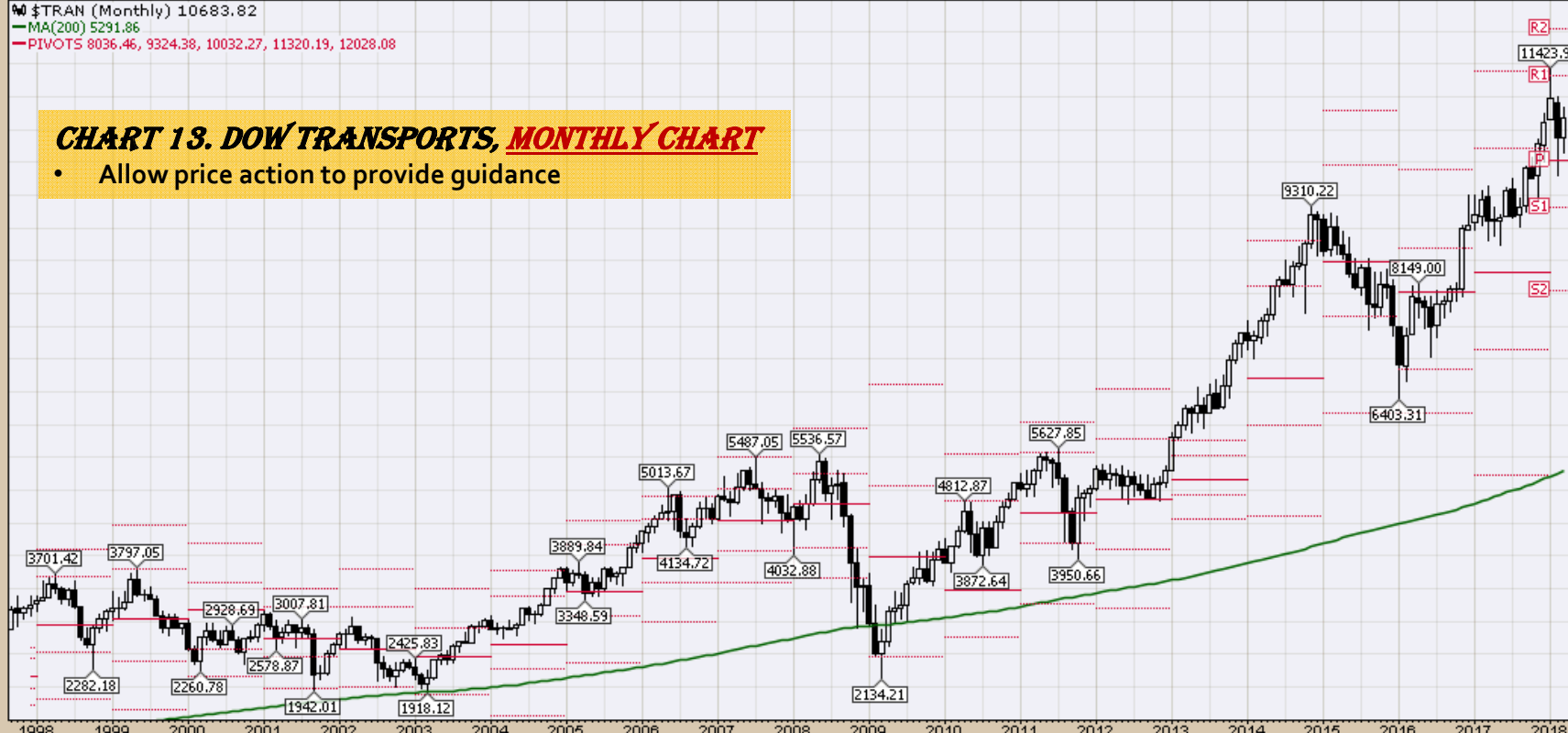
\$TRAN (Monthly) 10683.82

MA(200) 5291.86

PIVOTS 8036.46, 9324.38, 10032.27, 11320.19, 12028.08

CHART 13. DOW TRANSPORTS, MONTHLY CHART

- Allow price action to provide guidance



\$SPX S&P 500 Large Cap Index INDX

16-Mar-2018

© StockCharts.com

Open 2715.22 High 2801.90 Low 2647.32 Close 2752.01 Volume 28.4B Chg +38.18 (+1.41%) ▲

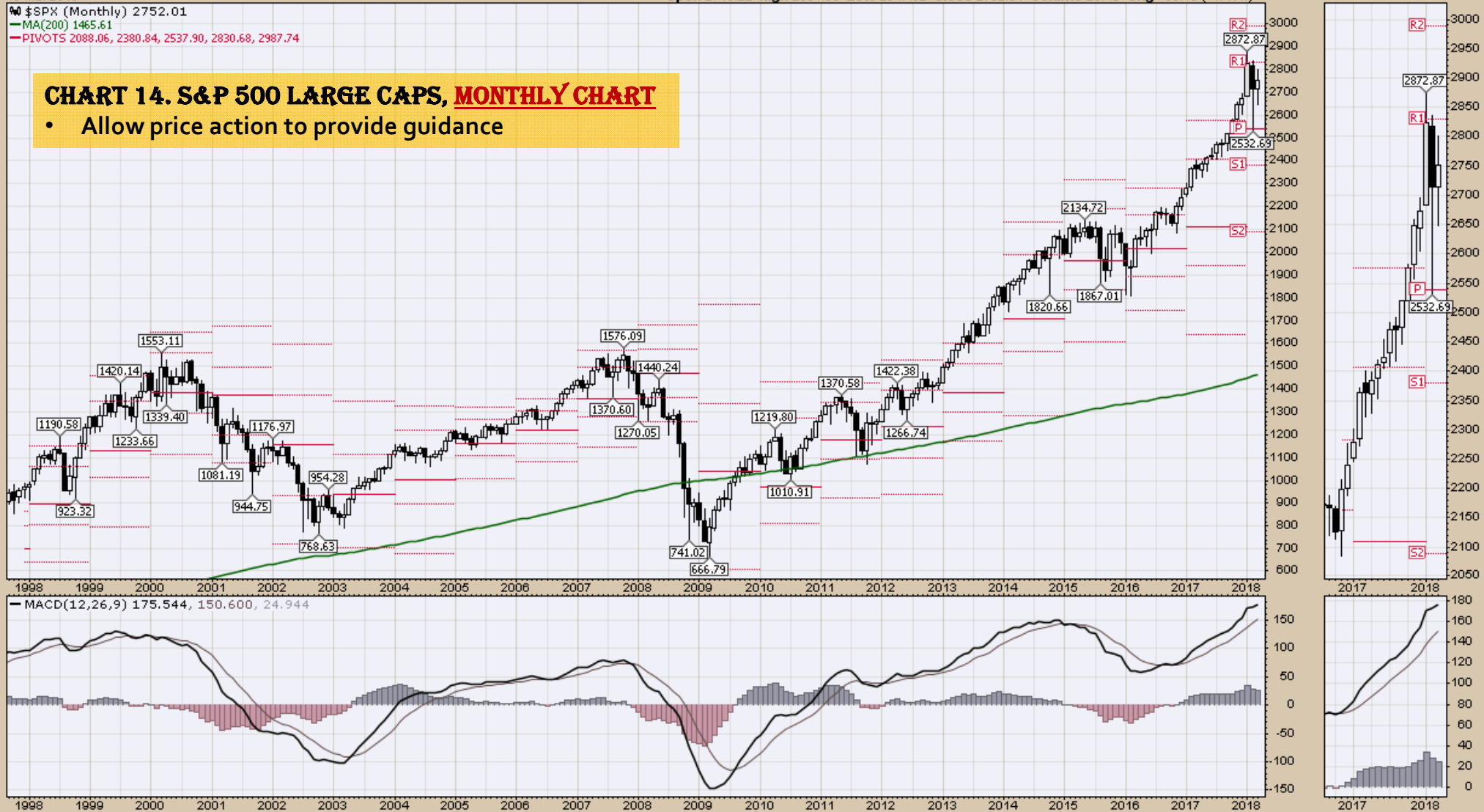
\$SPX (Monthly) 2752.01

MA(200) 1465.61

PIVOTS 2088.06, 2380.84, 2537.90, 2830.68, 2987.74

CHART 14. S&P 500 LARGE CAPS, MONTHLY CHART

- Allow price action to provide guidance



\$COMPQ Nasdaq Composite INDEX

16-Mar-2018

Open 7274.75 High 7637.27 Low 7084.83 Close 7481.99 Volume 27.1B Chg +208.98 (+2.87%) ▲

© StockCharts.com

\$COMPQ (Monthly) 7481.99
MA(200) 3058.86
PIVOTS 4829.19, 5866.29, 6435.09, 7472.19, 8040.99

CHART 15. NASDAQ COMPOSITE, MONTHLY CHART

- Allow price action to provide guidance

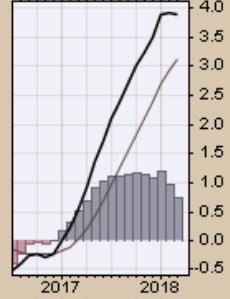
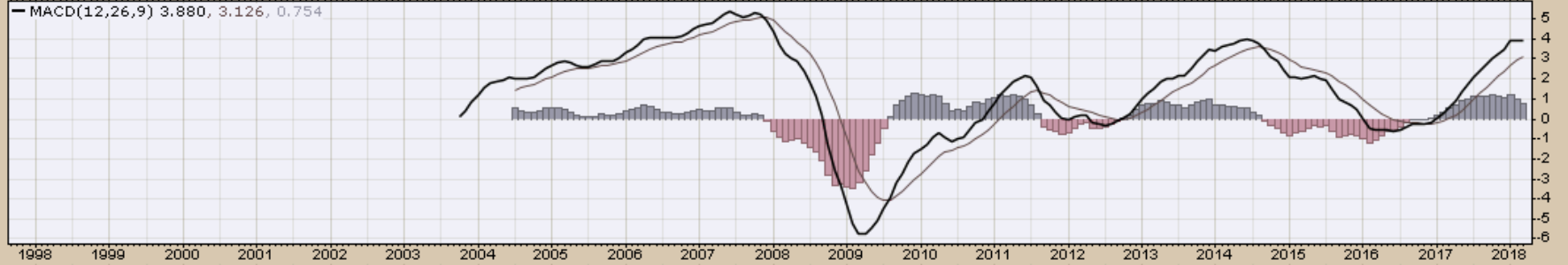
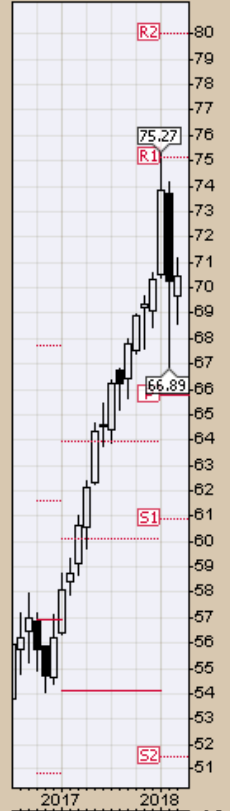
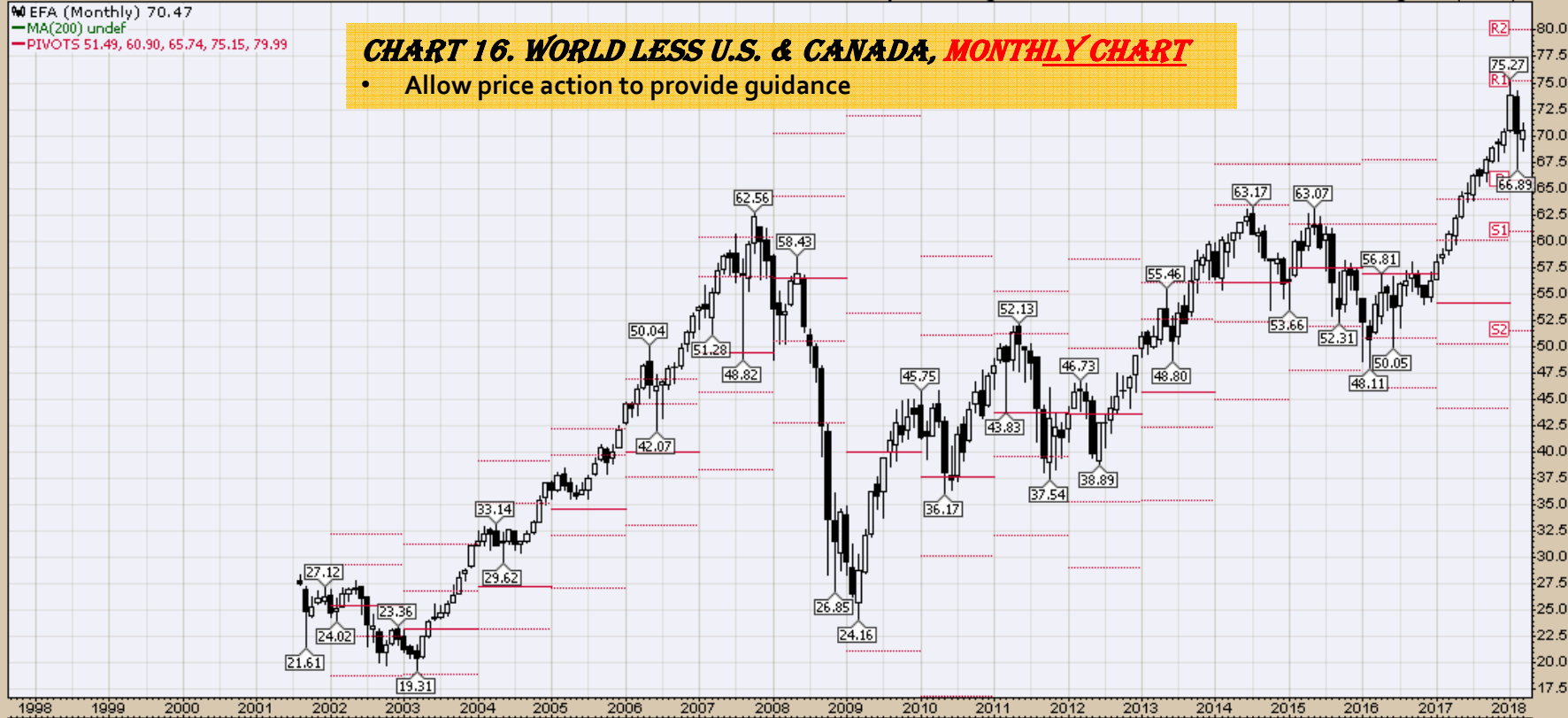


Select Global Equity Charts

▲ EFA (Monthly) 70.47
— MA(200) undef
— PIVOTS 51.49, 60.90, 65.74, 75.15, 79.99

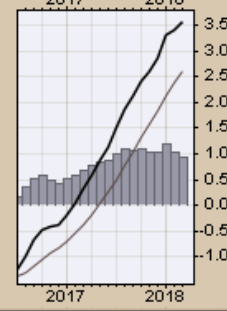
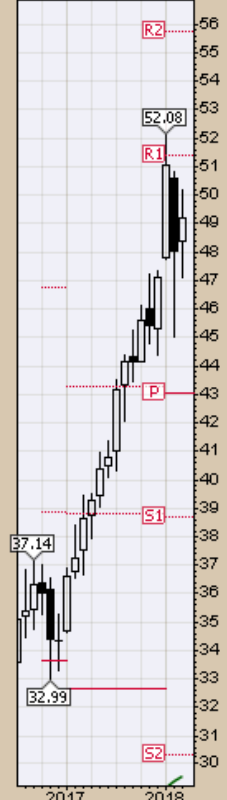
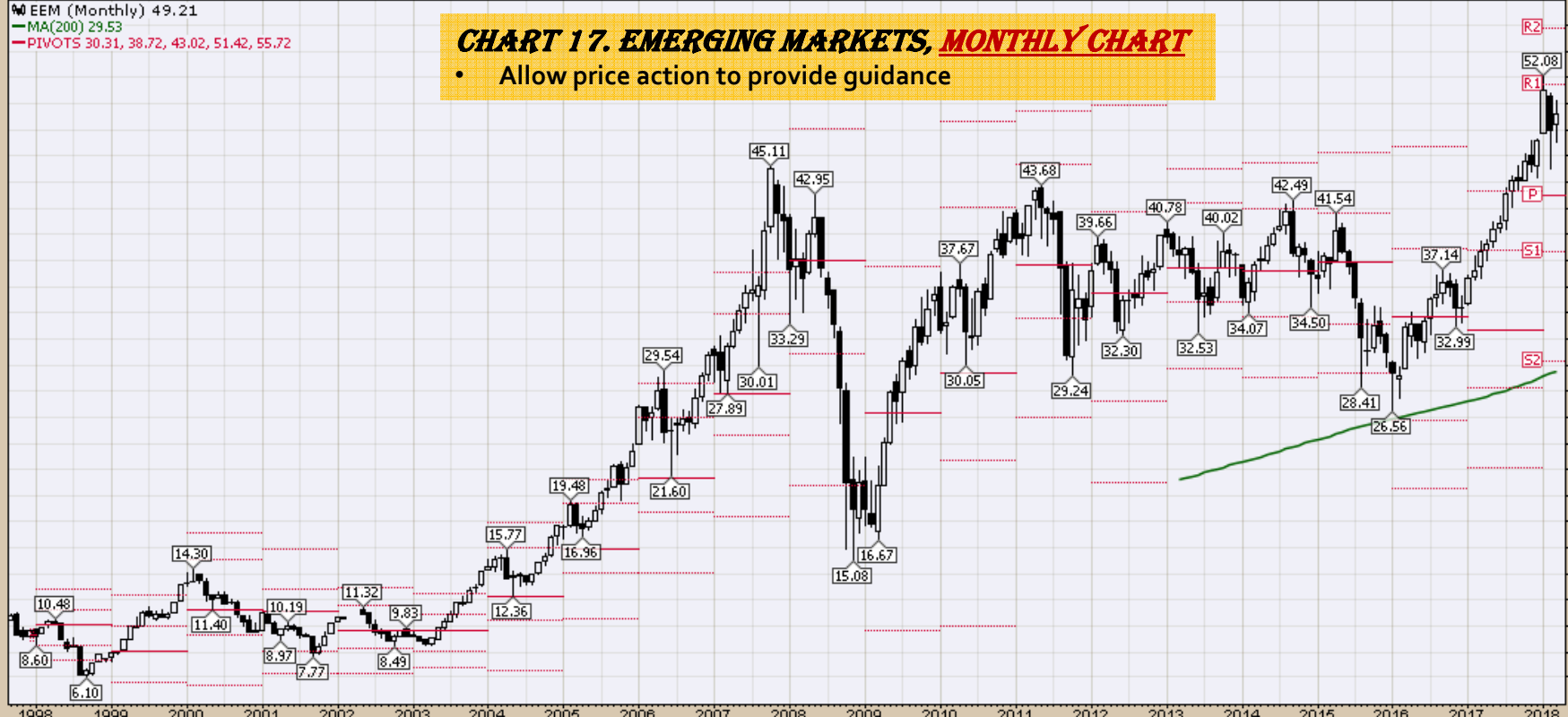
CHART 16. WORLD LESS U.S. & CANADA, MONTHLY CHART

- Allow price action to provide guidance



▲ EEM (Monthly) 49.21
 — MA(200) 29.53
 — PIVOTS 30.31, 38.72, 43.02, 51.42, 55.72

CHART 17. EMERGING MARKETS, MONTHLY CHART
 • Allow price action to provide guidance



EWA iShares MSCI Australia ETF NYSE

16-Mar-2018

© StockCharts.com

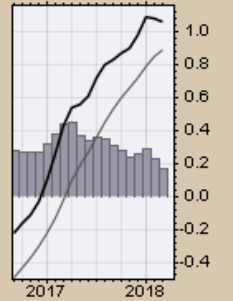
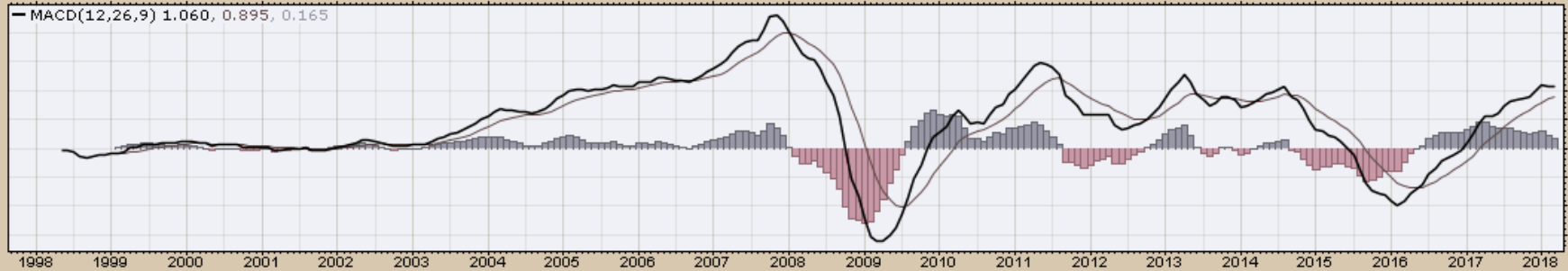
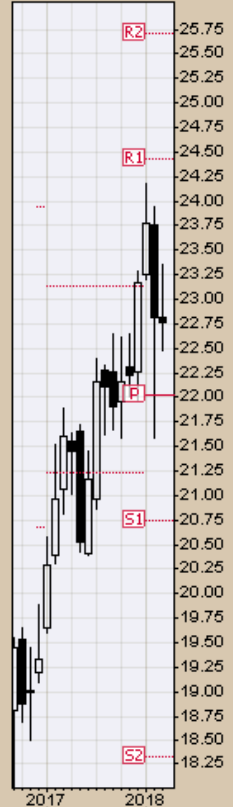
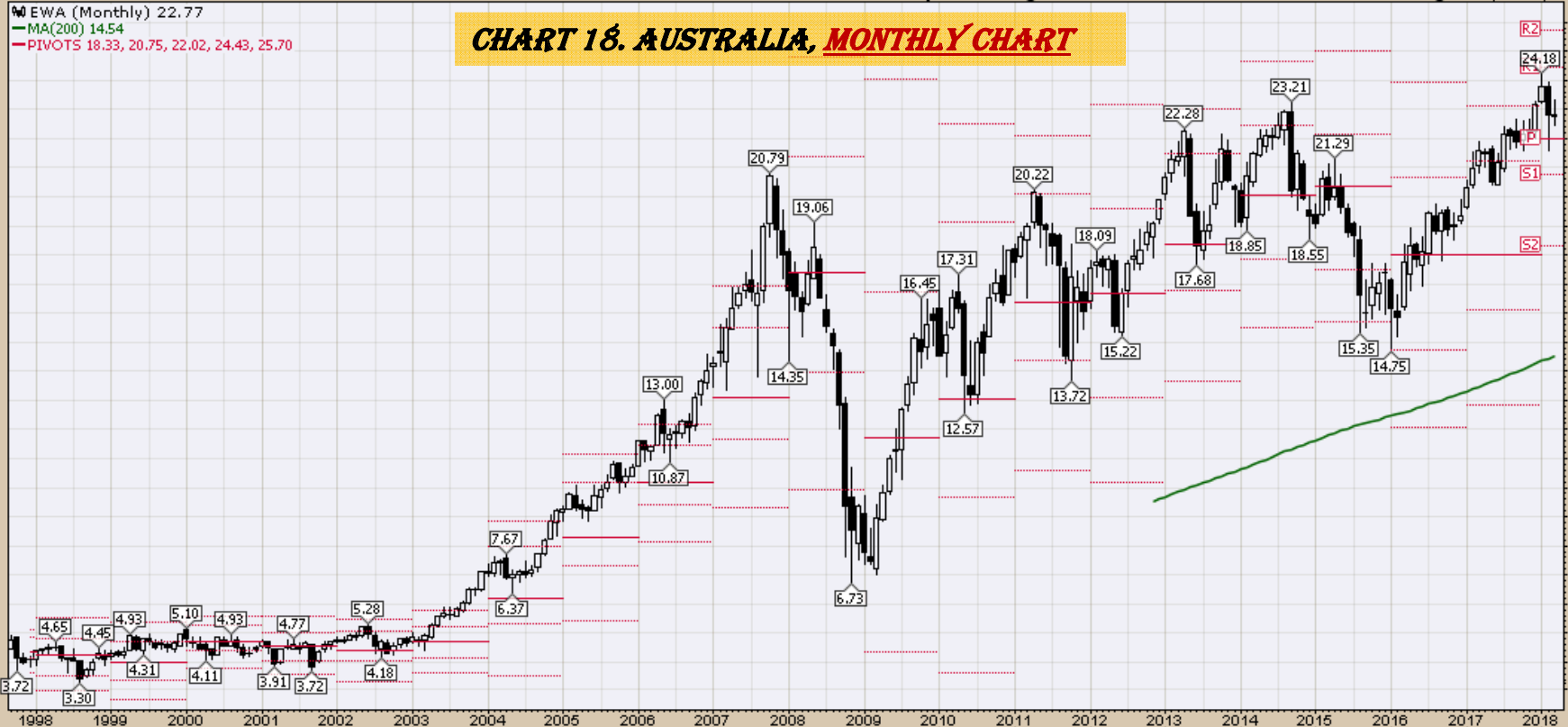
Open 22.81 High 23.34 Low 22.47 Close 22.77 Volume 23.1M Chg -0.05 (-0.22%)

EWA (Monthly) 22.77

MA(200) 14.54

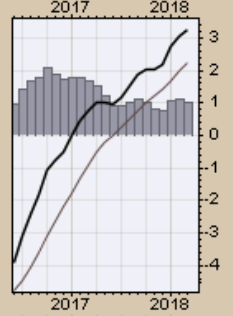
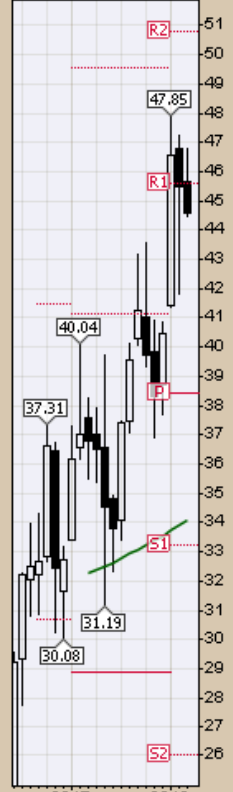
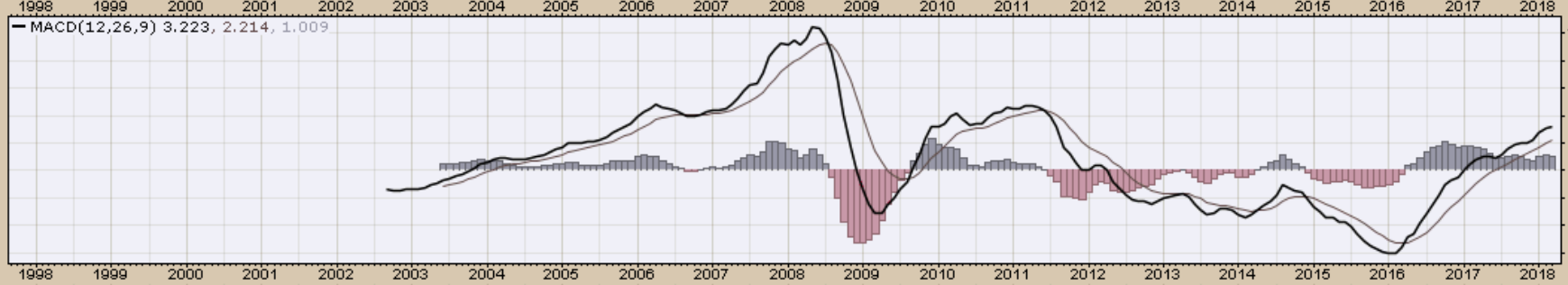
PIVOTS 18.33, 20.75, 22.02, 24.43, 25.70

CHART 18. AUSTRALIA, MONTHLY CHART



EWZ (Monthly) 44.61
 MA(200) 34.10
 PIVOTS 26.03, 33.24, 38.40, 45.61, 50.77

CHART 19. BRAZIL, MONTHLY CHART



EWC iShares MSCI Canada ETF NYSE

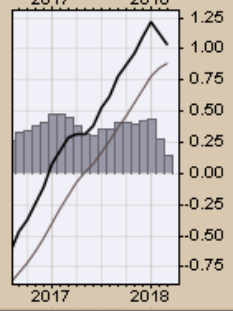
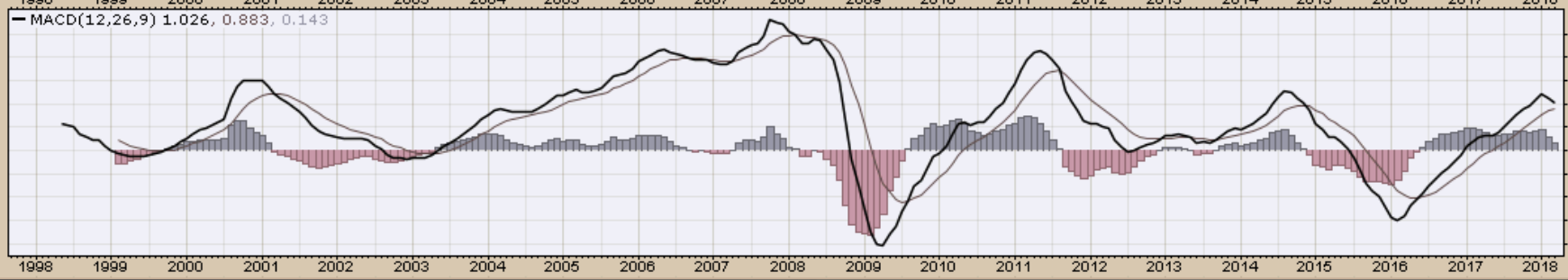
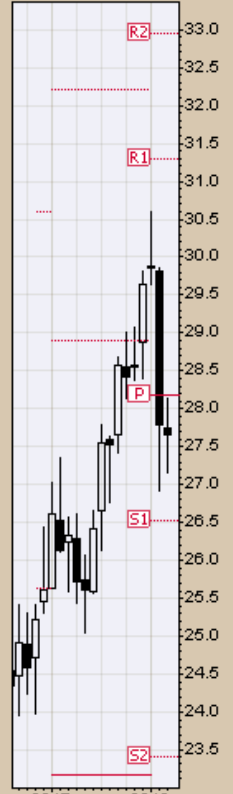
16-Mar-2018

© StockCharts.com

Open 27.75 High 28.15 Low 27.15 Close 27.67 Volume 58.8M Chg -0.12 (-0.43%)

EWC (Monthly) 27.67
MA(200) 20.43
PIVOTS 23.40, 26.52, 28.17, 31.29, 32.94

CHART 20. CANADA, MONTHLY CHART



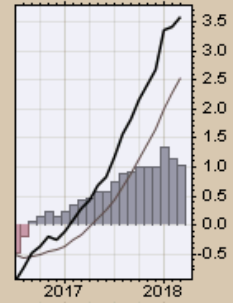
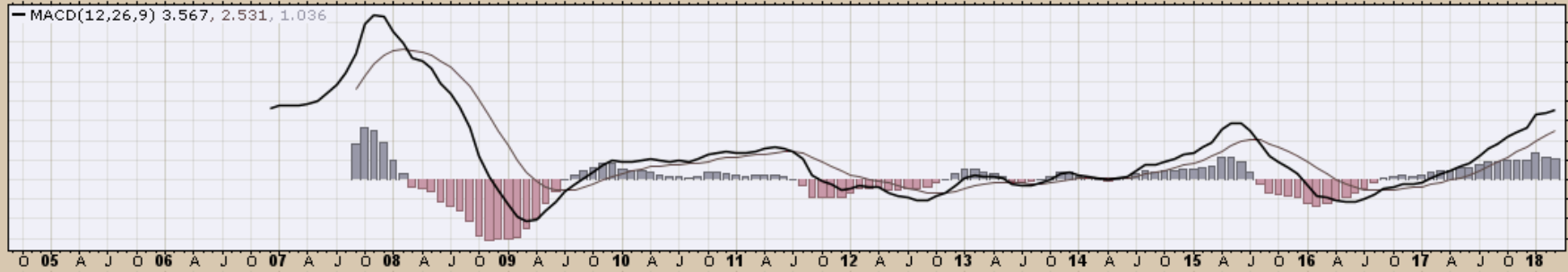
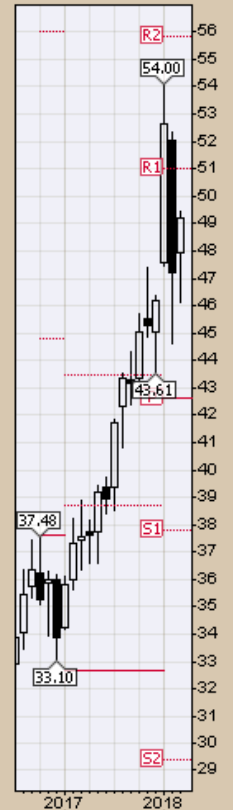
FXI iShares China Large-Cap ETF NYSE
16-Mar-2018

© StockCharts.com

Open 47.96 High 49.44 Low 46.15 Close 49.19 Volume 280.3M Chg +1.97 (+4.17%) ▲

FXI (Monthly) 49.19
MA(200) undef
PIVOTS 29.39, 37.78, 42.60, 50.99, 55.81

CHART 21. CHINA, MONTHLY CHART



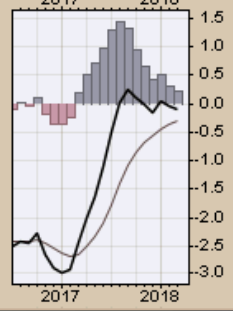
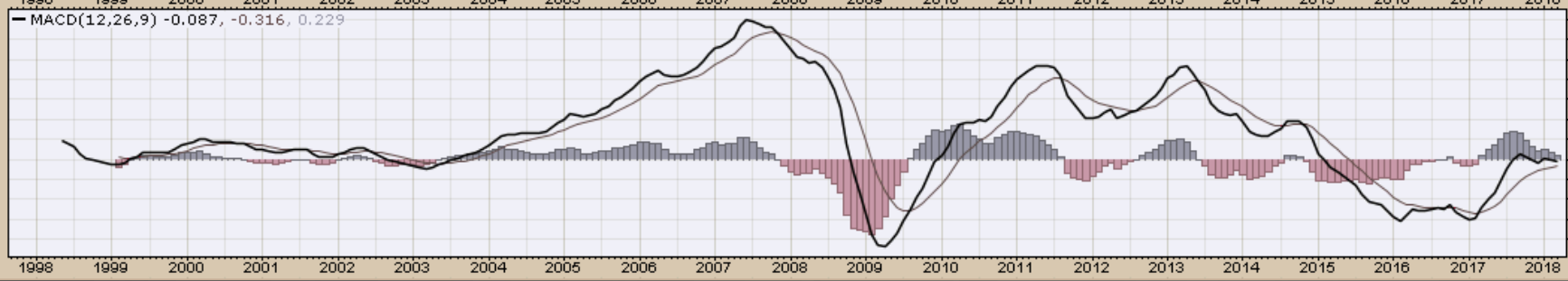
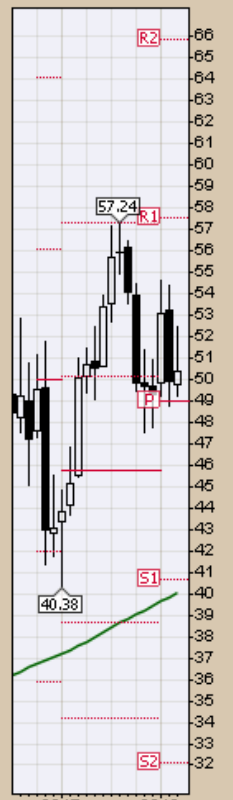
EWW iShares MSCI Mexico Capped ETF NYSE
16-Mar-2018

© StockCharts.com

Open 49.81 High 52.44 Low 49.27 Close 50.43 Volume 42.7M Chg +0.52 (+1.04%) ▲

EW (Monthly) 50.43
MA(200) 40.04
PIVOTS 32.11, 40.70, 48.97, 57.56, 65.83

CHART 22. MEXICO, MONTHLY CHART



EWJ iShares MSCI Japan ETF NYSE

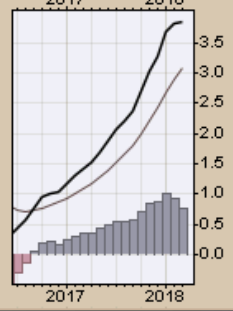
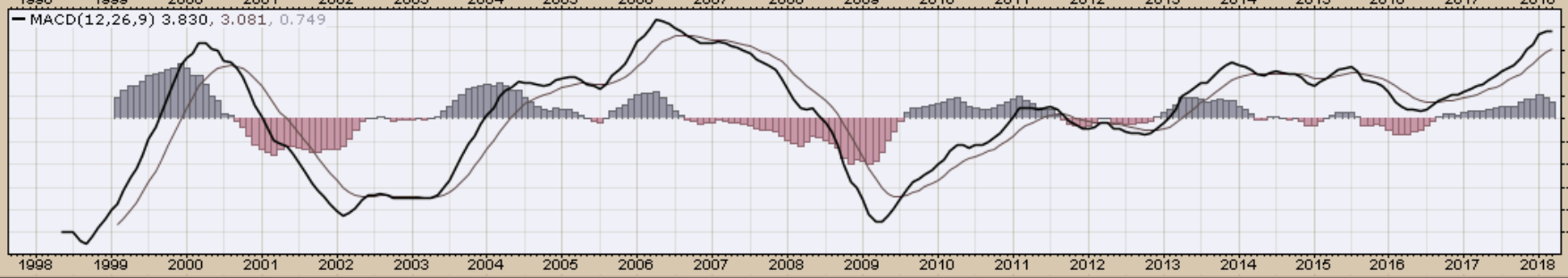
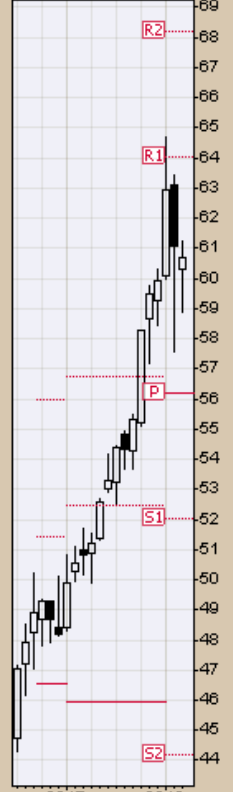
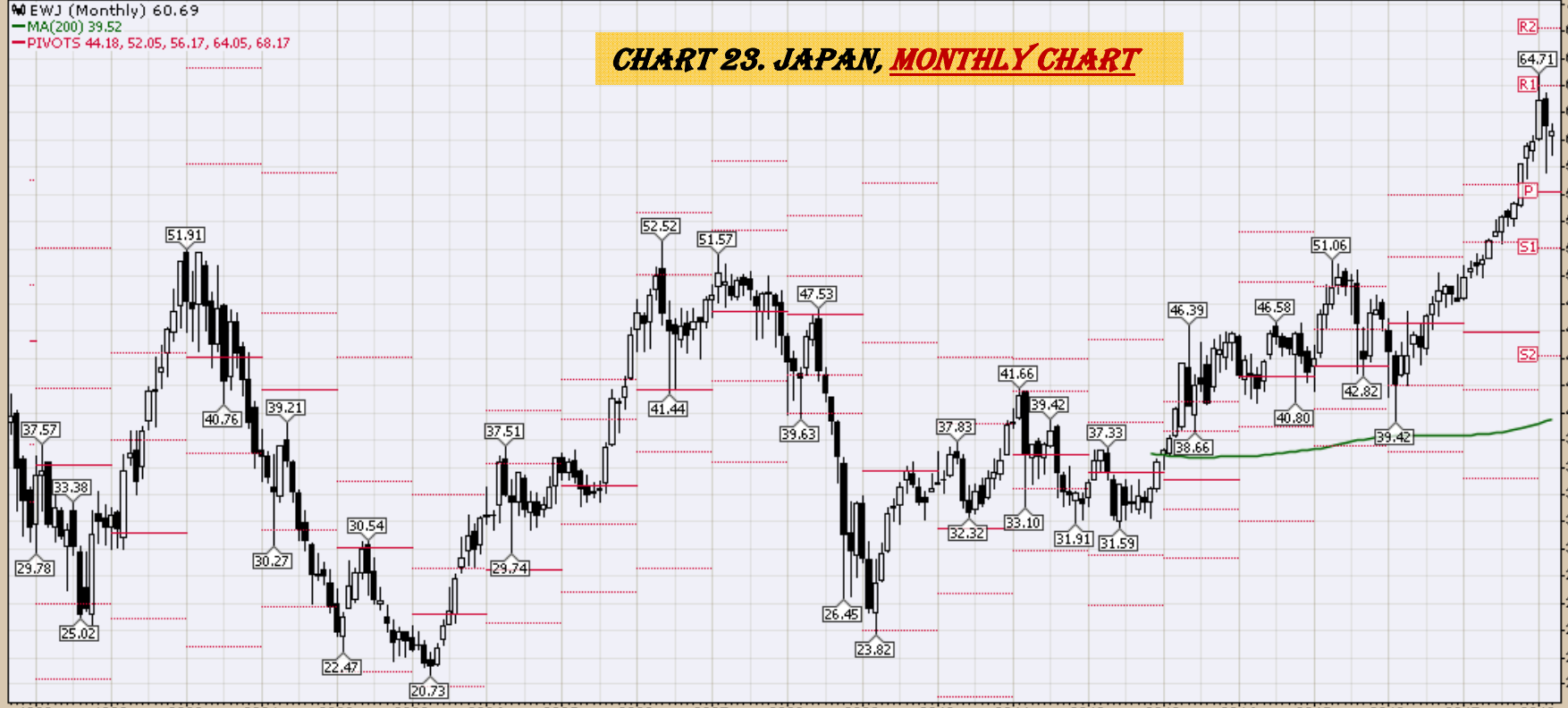
16-Mar-2018

Open 60.30 High 61.24 Low 58.90 Close 60.69 Volume 139.9M Chg -0.38 (-0.62%)

© StockCharts.com

EWJ (Monthly) 60.69
MA(200) 39.52
PIVOTS 44.18, 52.05, 56.17, 64.05, 68.17

CHART 23. JAPAN, MONTHLY CHART



RSX (Monthly) 22.81

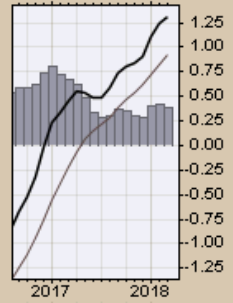
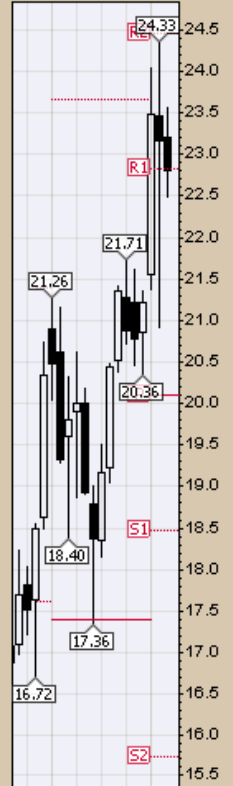
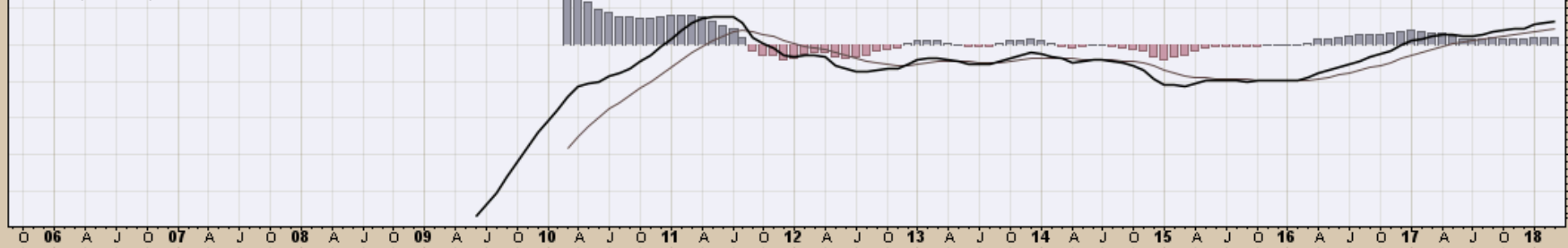
MA(200) undef

PIVOTS 15.74, 18.47, 20.09, 22.83, 24.45

CHART 24. RUSSIA, MONTHLY CHART



MACD(12,26,9) 1.300, 0.915, 0.385



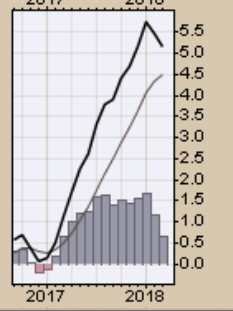
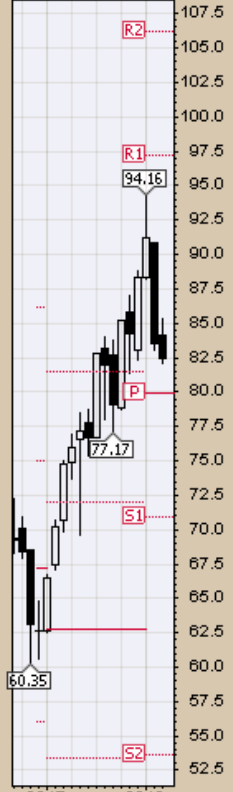
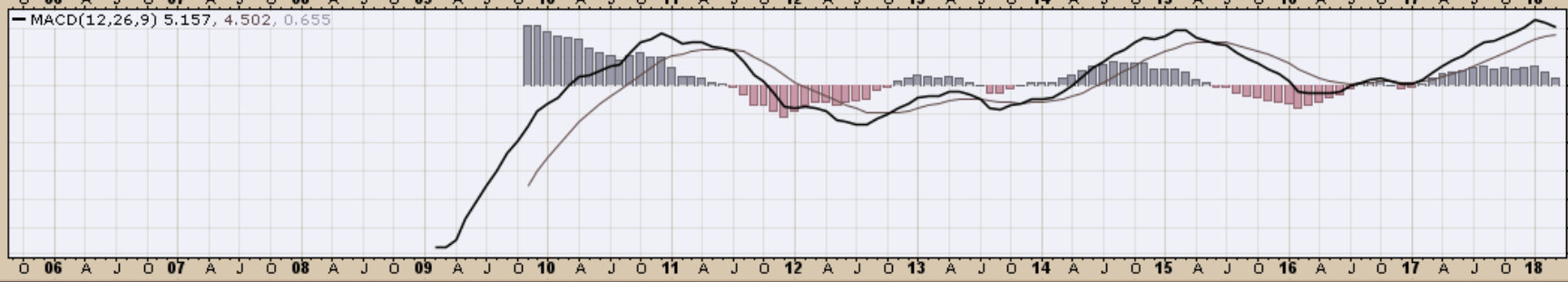
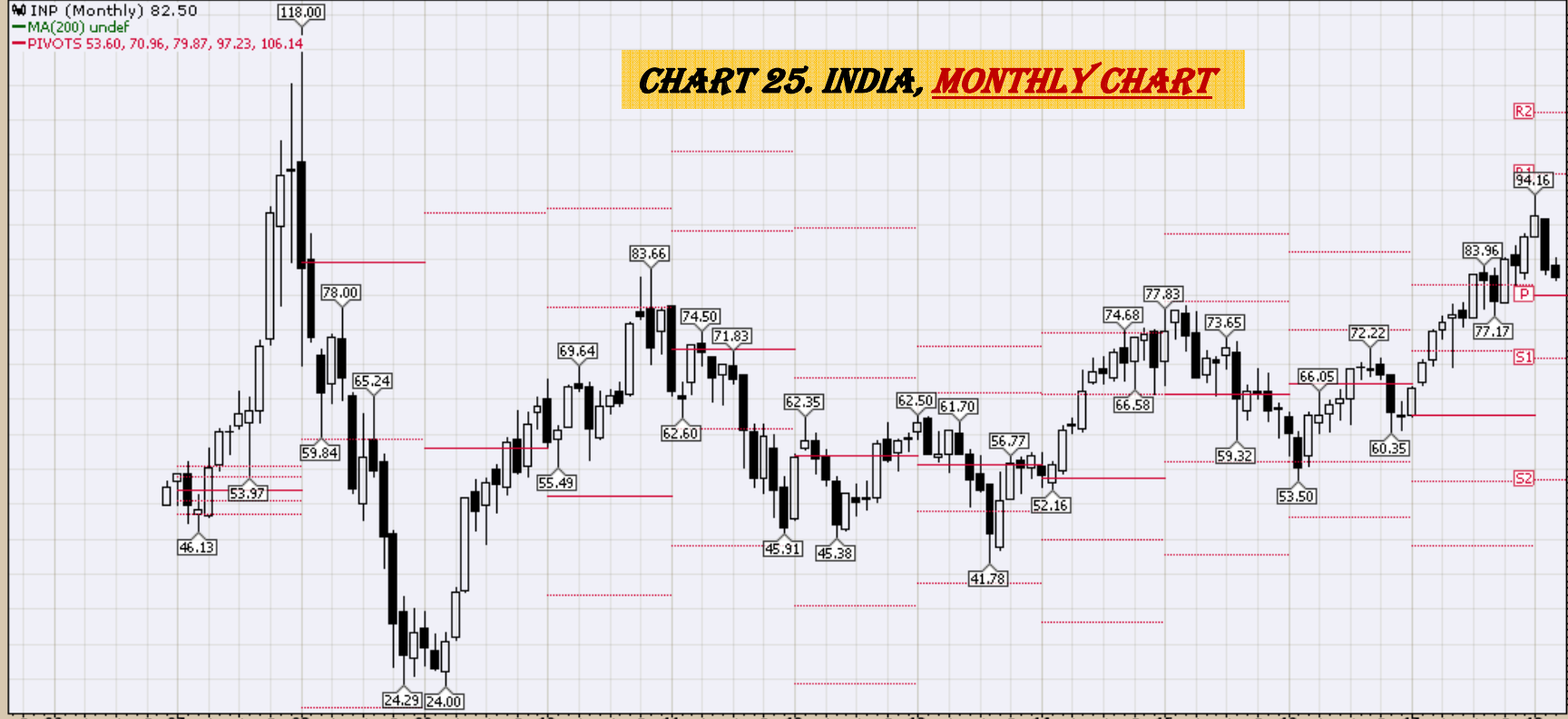
INP iPath MSCI India Index ETN NYSE
16-Mar-2018

Open 84.18 High 85.30 Low 82.10 Close 82.50 Volume 62.9K Chg -1.08 (-1.29%)

© StockCharts.com

INP (Monthly) 82.50
MA(200) undef
PIVOTS 53.60, 70.96, 79.87, 97.23, 106.14

CHART 25. INDIA, MONTHLY CHART



CRB Commodity Index
Weekly, Daily and Monthly Charts

\$CRB Reuters/Jefferies CRB Index (EOD) INDXX
16-Mar-2018

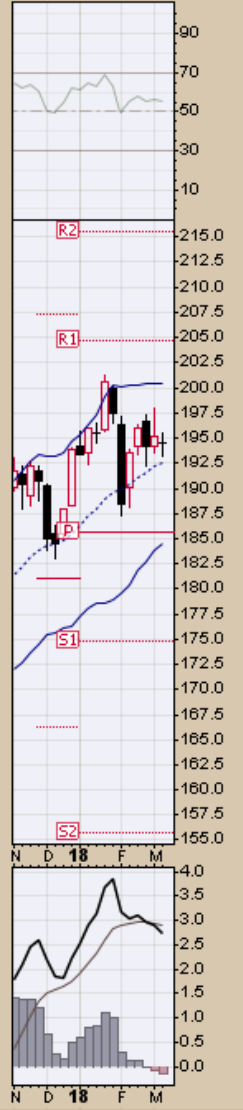
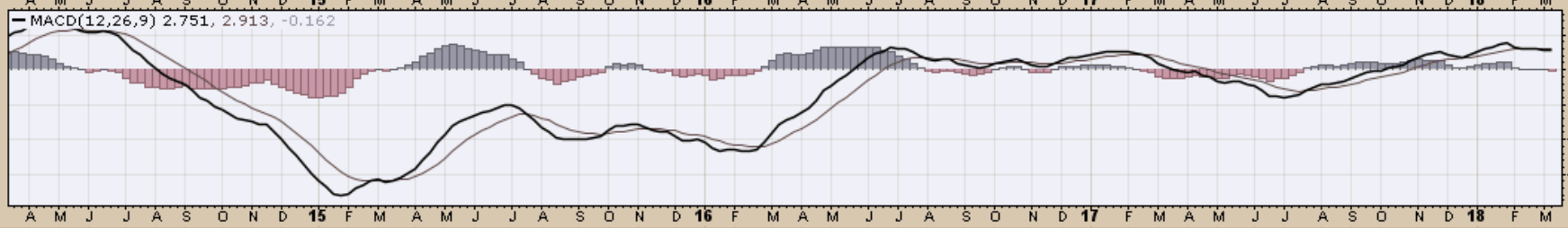
© StockCharts.com

Open 194.50 High 195.50 Low 193.18 Close 194.46 Chg -0.69 (-0.36%)

RSI(14) 55.26

\$CRB (Weekly) 194.46
BB(20,2.0) 184.58 - 192.52 - 200.46
PIVOTS 155.69, 174.78, 185.57, 204.66, 215.45
Volume undef

**CHART 26. \$CRB REUTERS/JEFFERIES CRB INDEX
WEEKLY CHART**



\$CRB Reuters/Jefferies CRB Index (EOD) INDXX

16-Mar-2018

© StockCharts.com

Reuters/Jefferies CRB Index (EOD) (Daily) 194.46

BB(20,2,0) 192.70 - 194.76 - 196.81

PIVOTS 181.96, 187.96, 193.35, 199.34, 204.73

Volume undef

Open 193.84 High 194.64 Low 193.18 Close 194.46 Chg +0.57 (+0.29%) ▲

CHART 27. \$CRB REUTERS/JEFFERIES CRB INDEX DAILY CHART



\$CRB Reuters/Jefferies CRB Index (EOD) INDX

© StockCharts.com

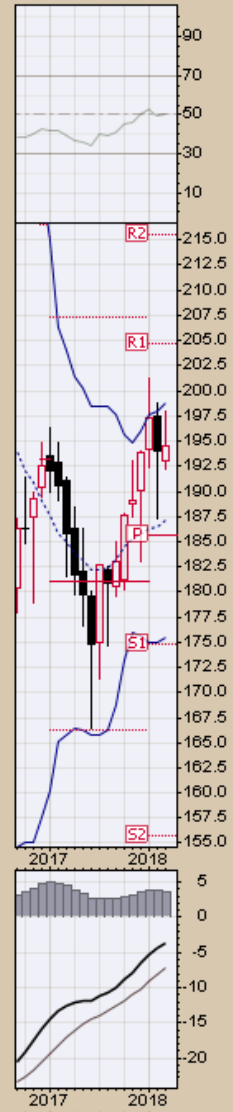
16-Mar-2018

Open 192.97 High 197.92 Low 192.19 Close 194.46 Chg +0.51 (+0.26%) ▲

▲ RSI(14) 50.39

● \$CRB (Monthly) 194.46
— BB(20,2,0) 175.39 - 187.12 - 198.85
— PIVOTS 155.63, 174.78, 185.57, 204.66, 215.45
■ Volume undef

CHART 28. \$CRB REUTERS/JEFFERIES CRB INDEX
MONTHLY CHART



\$WTIC Light Crude Oil
Weekly, Daily and Monthly Charts

\$WTIC Light Crude Oil - Continuous Contract (EOD) CME

© StockCharts.com

16-Mar-2018

Open 62.10 High 62.60 Low 60.11 Close 62.41 Volume 2.8M Chg +0.37 (+0.60%) ▲

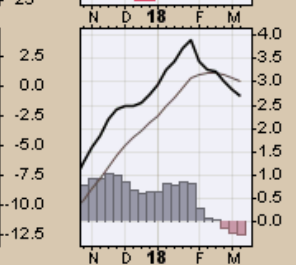
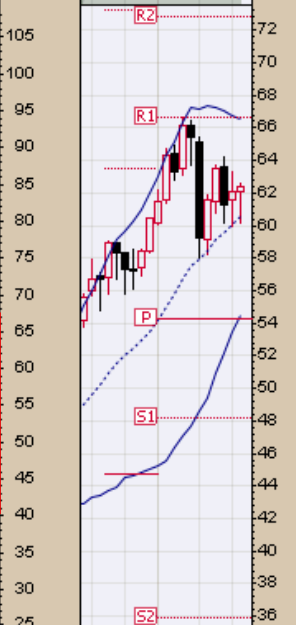
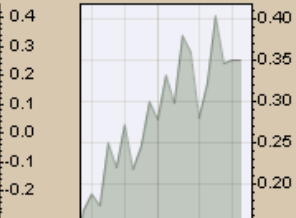
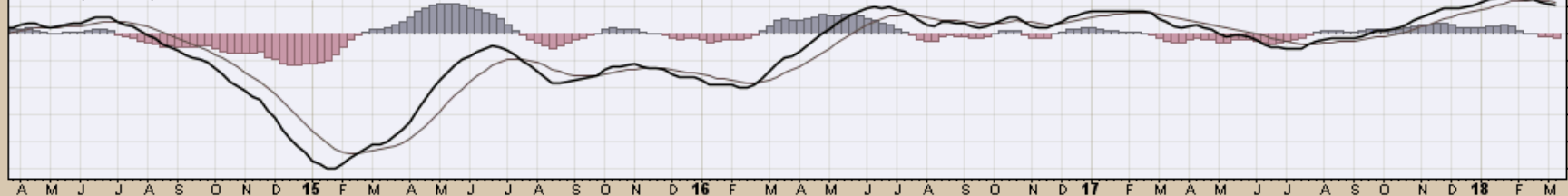
▲ CMF(20) 0.351

▲ \$WTIC (Weekly) 62.41
— BB(20,2,0) 54.51 - 60.53 - 66.55
— PIVOTS 35.87, 48.14, 54.33, 66.60, 72.79

CHART 29. \$WTIC, WEEKLY CHART



— MACD(12,26,9) 2.713, 3.016, -0.303



\$WTIC Light Crude Oil - Continuous Contract (EOD) CME
16-Mar-2018

© StockCharts.com

Open 61.24 High 62.60 Low 61.14 Close 62.41 Volume 435.1K Chg +1.22 (+1.99%) ▲

Light Crude Oil - Continuous Contract (EOD) (Daily) 62.41
BB(20,2,0) 59.95 - 61.86 - 63.77
PIVOTS 53.77, 57.71, 62.00, 65.94, 70.23

CHART 30. \$WTIC, DAILY CHART



\$WTIC Light Crude Oil - Continuous Contract (EOD) CME

© StockCharts.com

16-Mar-2018

Open 61.55 High 63.28 Low 59.95 Close 62.41 Volume 7.8M Chg +0.77 (+1.25%) ▲

▲ CMF(20) 0.243 (28 Feb)

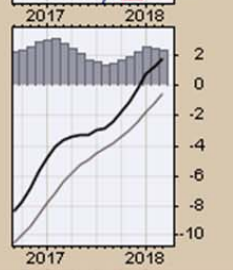


● \$WTIC (Monthly) 62.41
— BB(20,2,0) 41.29 - 52.71 - 64.12
— PIVOTS 35.87, 48.14, 54.33, 66.60, 72.79

CHART 31. \$WTIC, MONTHLY CHART



— MACD(12,26,9) 1.708, -0.596, 2.303



Soybeans
Weekly, Daily and Monthly Charts

\$SOYB Soybeans - Continuous Contract (EOD) CME

© StockCharts.com

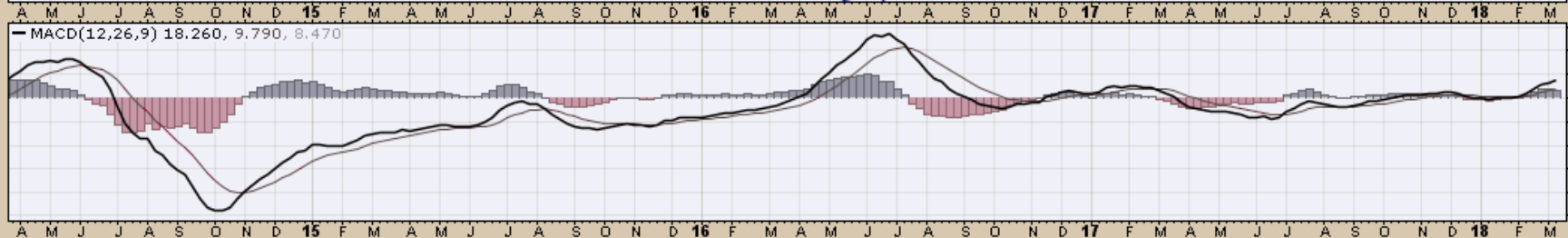
18-Mar-2018

Open 1036.00 High 1054.00 Low 1027.00 Close 1049.50 Volume 552.8K Chg +10.25 (+0.99%) ▲

▲ CMF(20) -0.056

\$SOYB (Weekly) 1049.50
BB(20,2,0) 932.50 - 995.76 - 1059.02
PIVOTS 800.92, 881.33, 980.67, 1061.08, 1160.42

CHART 32. SOYBEANS, WEEKLY CHART



\$SOYB Soybeans - Continuous Contract (EOD) CME
16-Mar-2018

© StockCharts.com

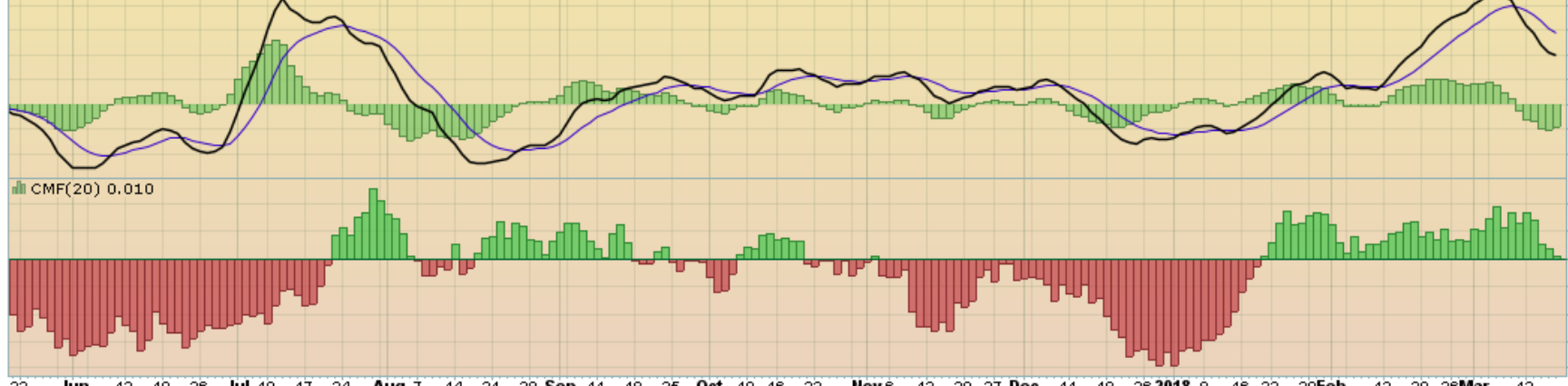
Open 1042.00 High 1050.00 Low 1040.75 Close 1049.50 Volume 67.4K Chg +8.75 (+0.84%) ▲

● Soybeans - Continuous Contract (EOD) (Daily) 1049.50
— BB(20,2,0) 1019.89 - 1050.36 - 1080.83
— PIVOTS 935.83, 995.67, 1027.58, 1087.42, 1119.33

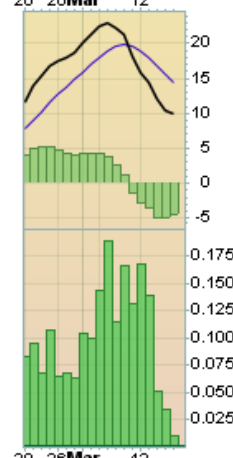
CHART 33. SOYBEANS, DAILY CHART



— MACD(12,26,9) 9.902, 14.423, -4.520



22 Jun 12 19 26 Jul 10 17 24 Aug 7 14 21 28 Sep 11 18 25 Oct 10 16 23 Nov 6 13 20 27 Dec 11 18 26 2018 8 16 22 29 Feb 12 20 26 Mar 12



\$SOYB Soybeans - Continuous Contract (EOD) CME

© StockCharts.com

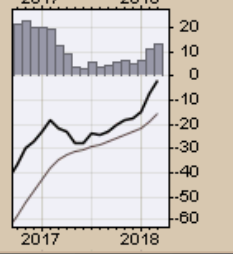
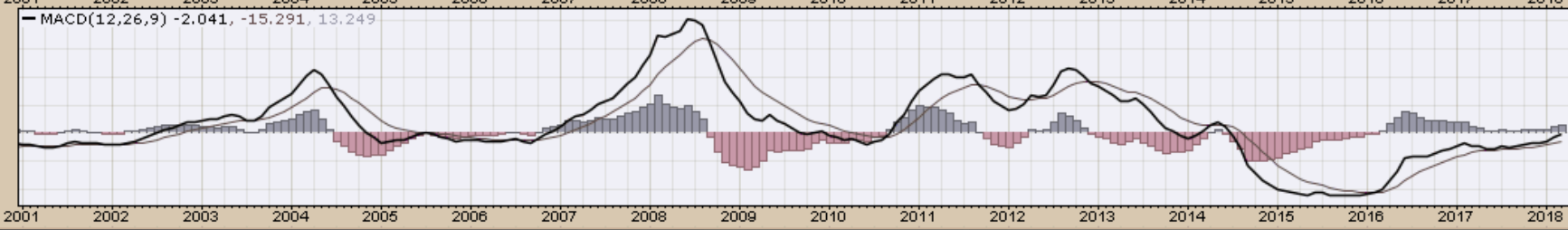
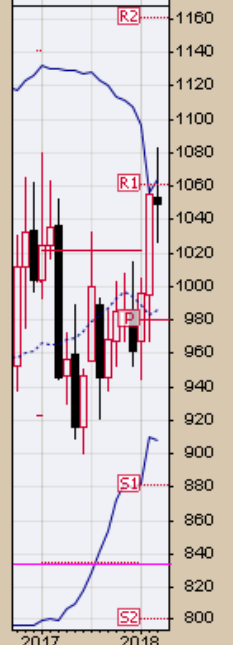
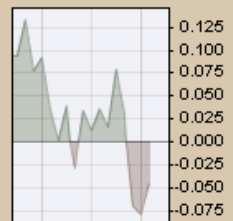
16-Mar-2018

Open 1053.75 High 1082.50 Low 1027.00 Close 1049.50 Volume 1.4M Chg -8.00 (-0.57%)

▲ CMF(20) -0.044 (28 Feb)

CHART 34. SOYBEANS, MONTHLY CHART

\$SOYB (Monthly) 1049.50
BB(20,2,0) 907.64 - 985.83 - 1064.01
PIVOTS 800.92, 881.33, 980.67, 1061.08, 1160.42



Corn
Weekly, Daily and Monthly Charts

\$CORN Corn - Continuous Contract (EOD) CME
16-Mar-2018

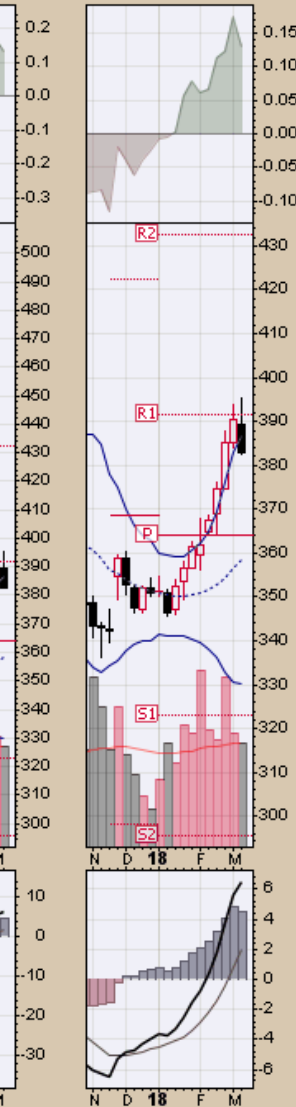
© StockCharts.com

Open 389.50 High 395.25 Low 382.50 Close 382.75 Volume 855.0K Chg -7.75 (-1.98%)

▲ CMF(20) 0.131

📉 \$CORN (Weekly) 382.75
— BB(20,2,0) 330.11 - 358.46 - 386.81
— PIVOTS 295.42, 323.08, 363.92, 391.58, 432.42
■ Volume 855.01K, EMA(50) 853.91K

CHART 35. CORN, WEEKLY CHART

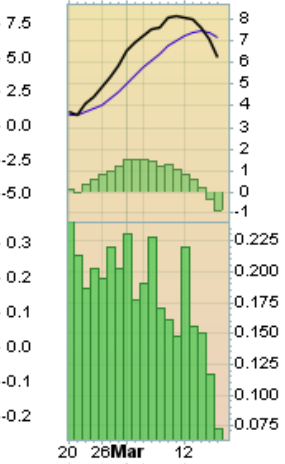
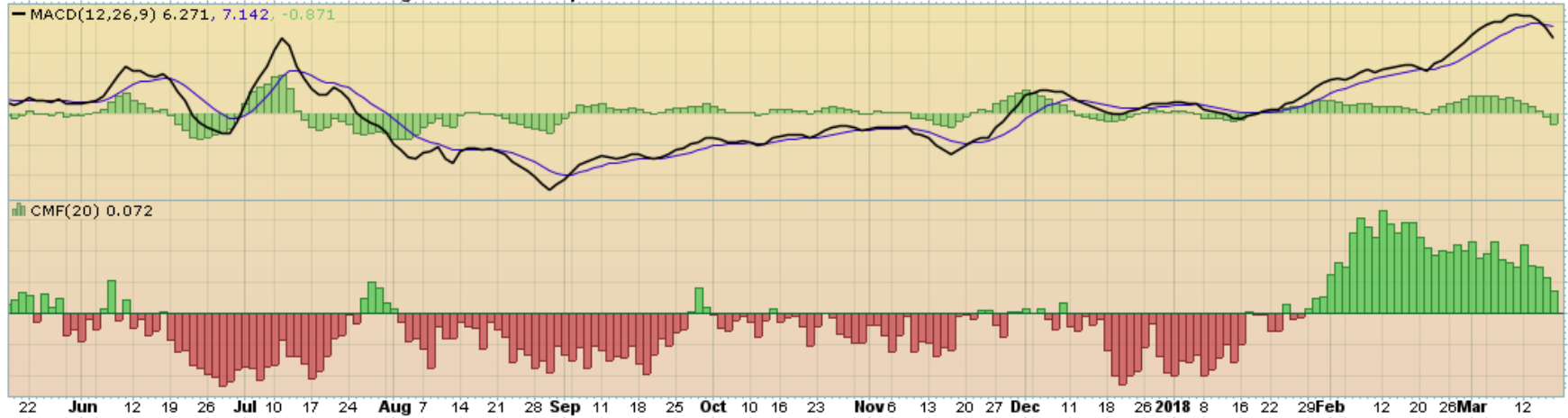
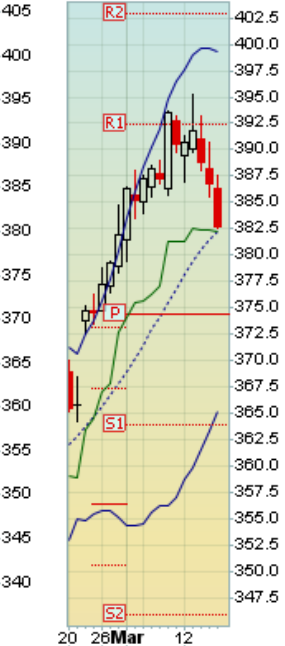


\$CORN Corn - Continuous Contract (EOD) CME
16-Mar-2018

© StockCharts.com
Open 386.25 High 387.50 Low 382.50 Close 382.75 Volume 142.9K Chg -4.00 (-1.03%)

▲ Corn - Continuous Contract (EOD) (Daily) 382.75
— BB(20,2,0) 365.24 - 382.27 - 399.31
— PIVOTS 345.83, 363.92, 374.33, 392.42, 402.83
— CHANDLR(22,3,0) 382.23

CHART 36. CORN, DAILY CHART



\$CORN Corn - Continuous Contract (EOD) CME

© StockCharts.com

16-Mar-2018

Open 381.50 High 395.25 Low 379.50 Close 382.75 Volume 2.3M Chg +0.75 (+0.20%)

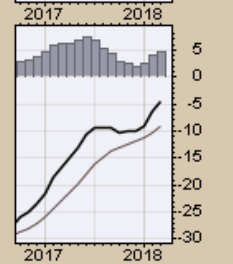
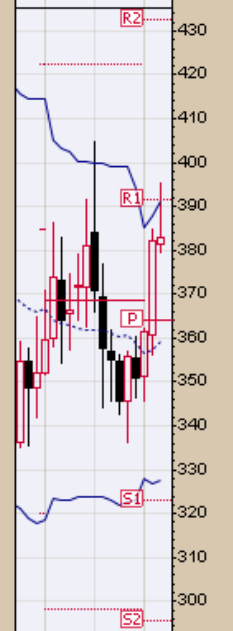
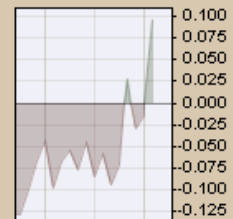
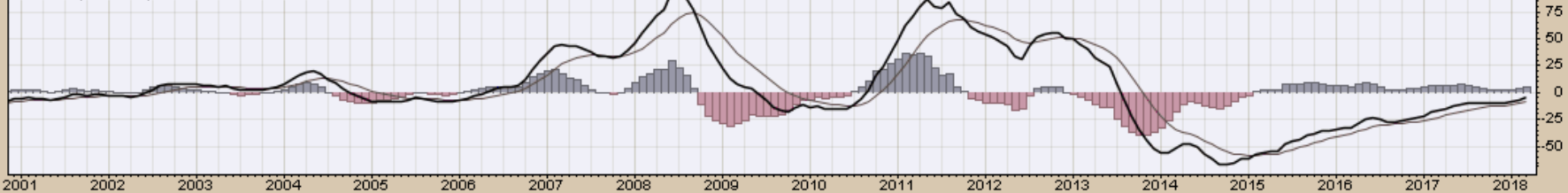
▲ CMF(20) 0.095 (28 Feb)

CHART 37. CORN, MONTHLY CHART

● \$CORN (Monthly) 382.75
— BB(20,2,0) 327.65 - 359.35 - 391.05
— PIVOTS 295.42, 323.08, 363.92, 391.58, 432.42



— MACD(12,26,9) -4.356, -9.146, 4.790



Rice
Quarterly and Daily Charts

ROUGH RICE, 30 YEAR



Rough Rice May '18 (ZRK18) - Barchart.com

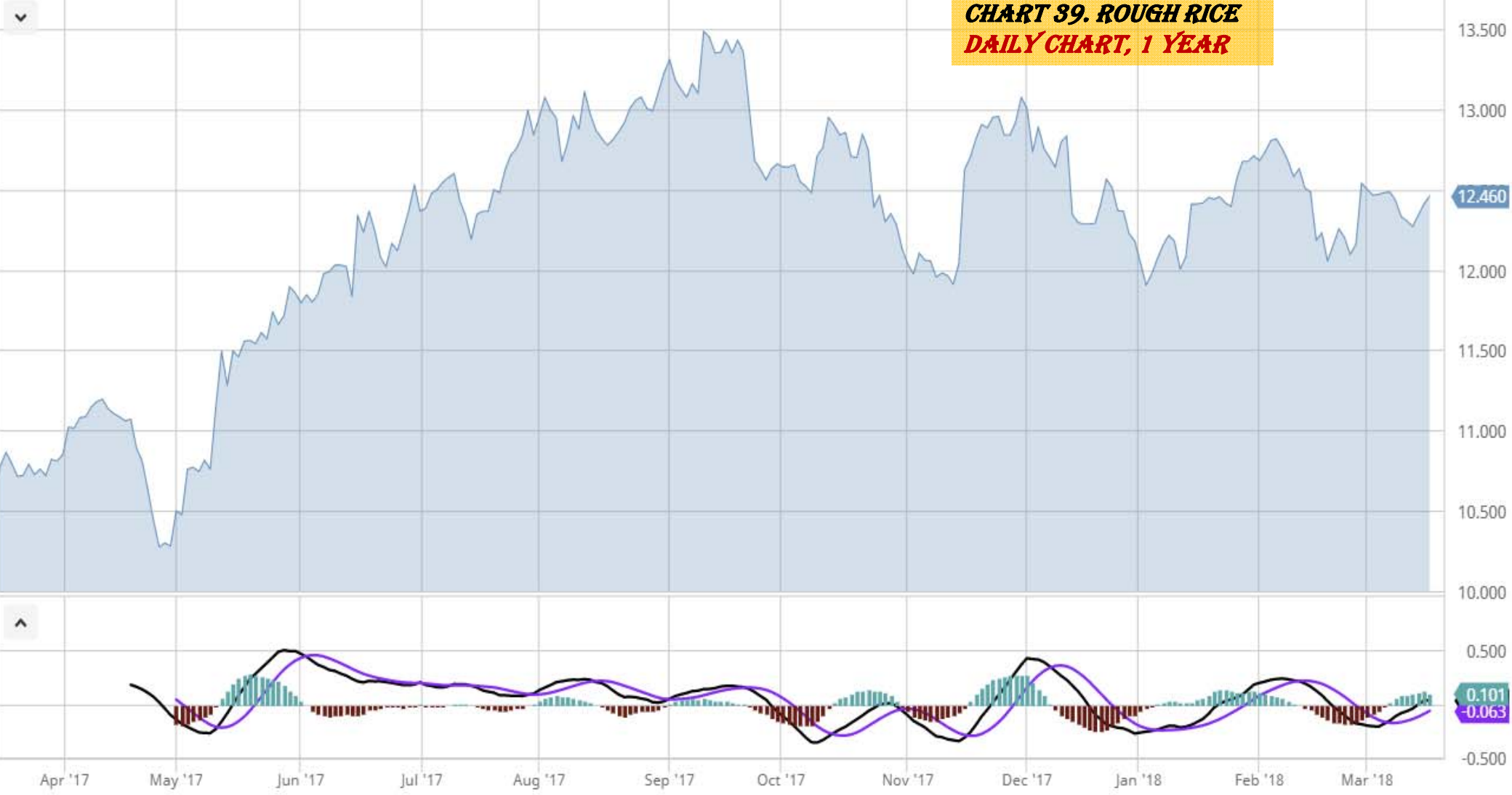
CHART 38. ROUGH RICE
WEEKLY CHART, 5 YEAR



17.000
16.000
15.000
14.000
13.000
12.460
12.000
11.000
10.000
9.000
8.000
0.119
-2.000

Rough Rice May '18 (ZRK18) - Barchart.com

CHART 39. ROUGH RICE
DAILY CHART, 1 YEAR



13.500
13.000
12.460
12.000
11.500
11.000
10.500
10.000
0.500
0.101
-0.063
-0.500

Cotton
Weekly, Daily and Monthly Charts

\$COTTON Cotton - Continuous Contract (EOD) ICE

16-Mar-2018

© StockCharts.com

Open 84.49 High 85.03 Low 82.04 Close 82.85 Volume 67.9K Chg -1.67 (-1.98%)

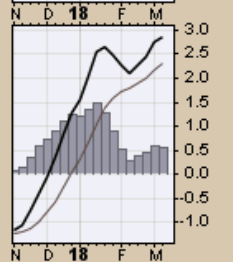
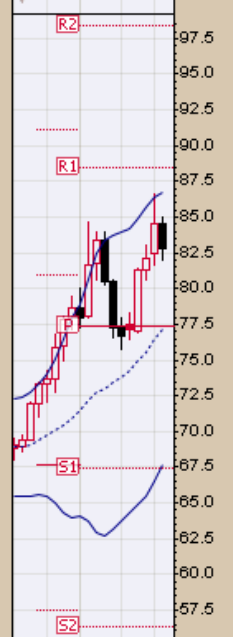
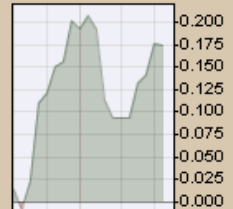
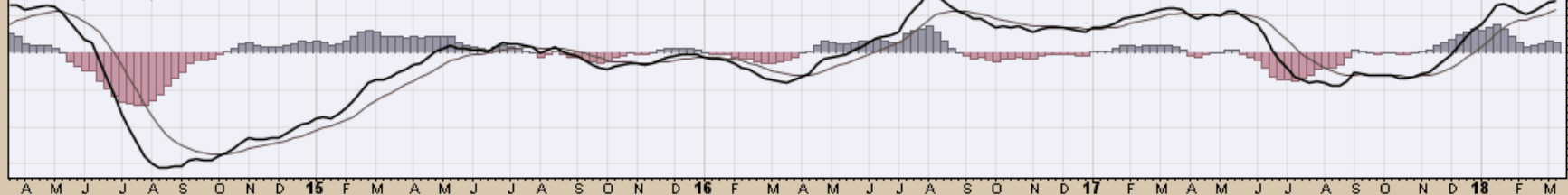
▲ CMF(20) 0.174

▲ \$COTTON (Weekly) 82.85
— BB(20,2,0) 67.65 - 77.20 - 86.75
— PIVOTS 56.29, 67.46, 77.32, 88.49, 98.35

CHART 40. COTTON, WEEKLY CHART



— MACD(12,26,9) 2.837, 2.295, 0.542



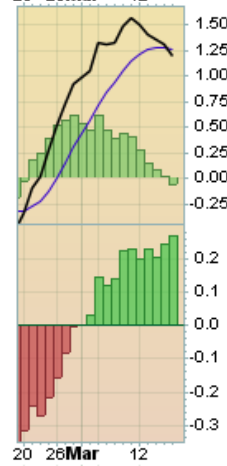
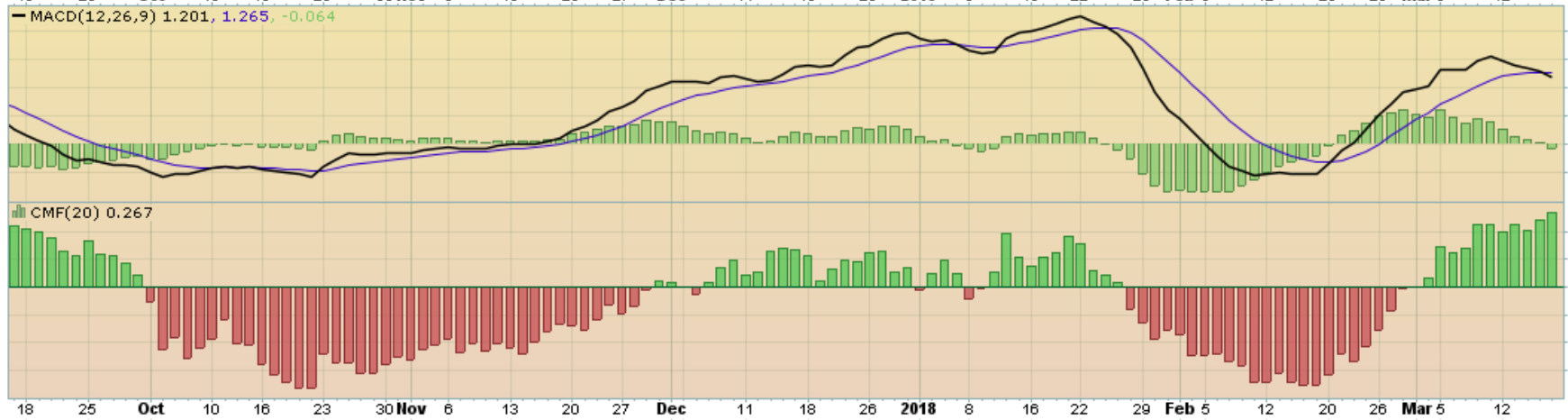
\$COTTON Cotton - Continuous Contract (EOD) ICE
16-Mar-2018

© StockCharts.com

Open 83.70 High 83.70 Low 82.42 Close 82.85 Volume 10.0K Chg -0.68 (-0.81%)

▲ Cotton - Continuous Contract (EOD) (Daily) 82.85
— BB(20,2,0) 78.31 - 82.24 - 86.17
— PIVOTS 73.26, 78.10, 80.57, 85.41, 87.88

CHART 41. COTTON, DAILY CHART



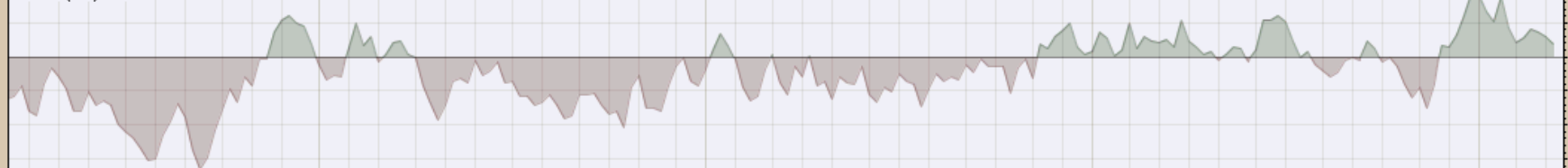
\$WHEAT Wheat - Continuous Contract (EOD) CME

16-Mar-2018

Open 488.50 High 498.00 Low 467.00 Close 467.75 Volume 357.9K Chg -21.50 (-4.39%)

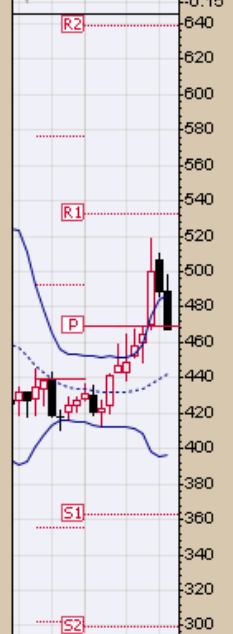
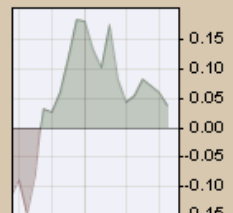
© StockCharts.com

▲ CMF(20) 0.038

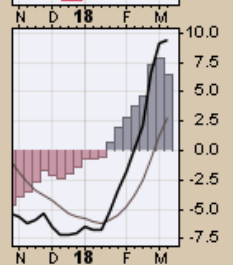


\$WHEAT (Weekly) 467.75
BB(20,2,0) 396.42 - 441.83 - 487.23
PIVOTS 299.00, 363.00, 468.75, 532.75, 638.50

CHART 42. COTTON, MONTHLY CHART



MACD(12,26,9) 9.324, 2.885, 6.439



Wheat
Weekly, Daily and Monthly Charts

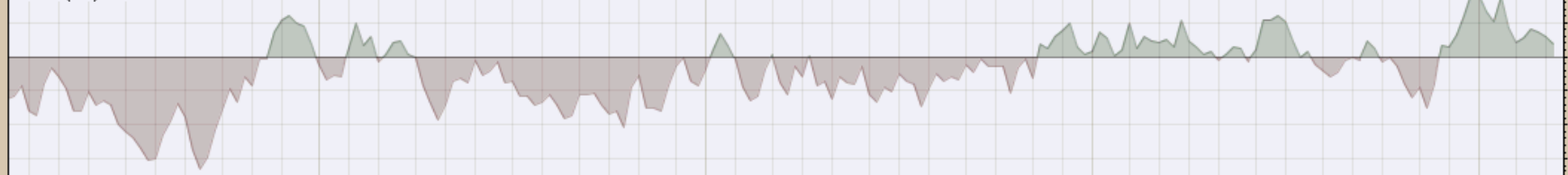
\$WHEAT Wheat - Continuous Contract (EOD) CME

© StockCharts.com

16-Mar-2018

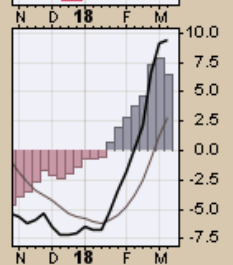
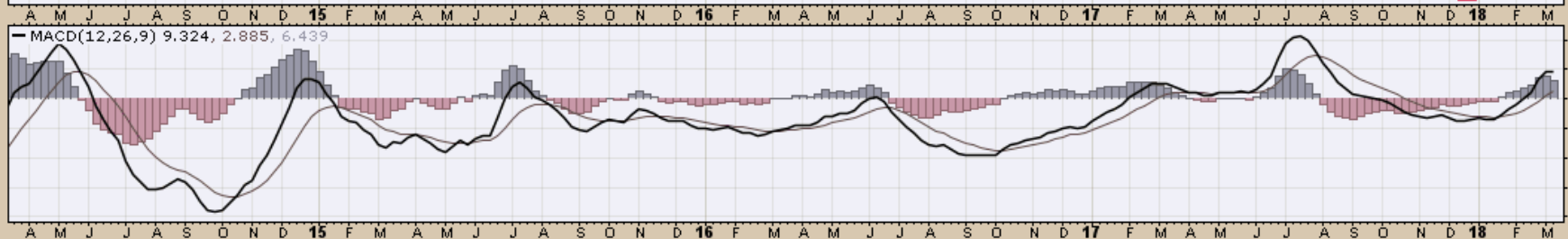
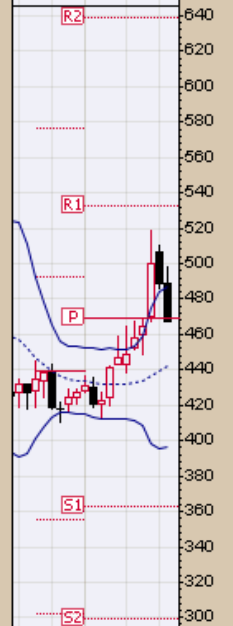
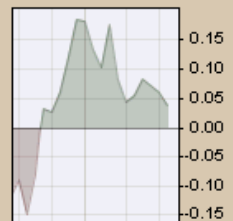
Open 488.50 High 498.00 Low 467.00 Close 467.75 Volume 357.9K Chg -21.50 (-4.39%)

▲ CMF(20) 0.038



\$WHEAT (Weekly) 467.75
BB(20,2,0) 396.42 - 441.83 - 487.23
PIVOTS 299.00, 363.00, 468.75, 532.75, 638.50

CHART 43. WHEAT, WEEKLY CHART



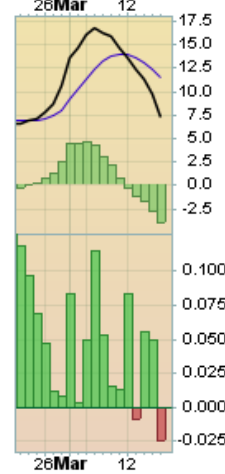
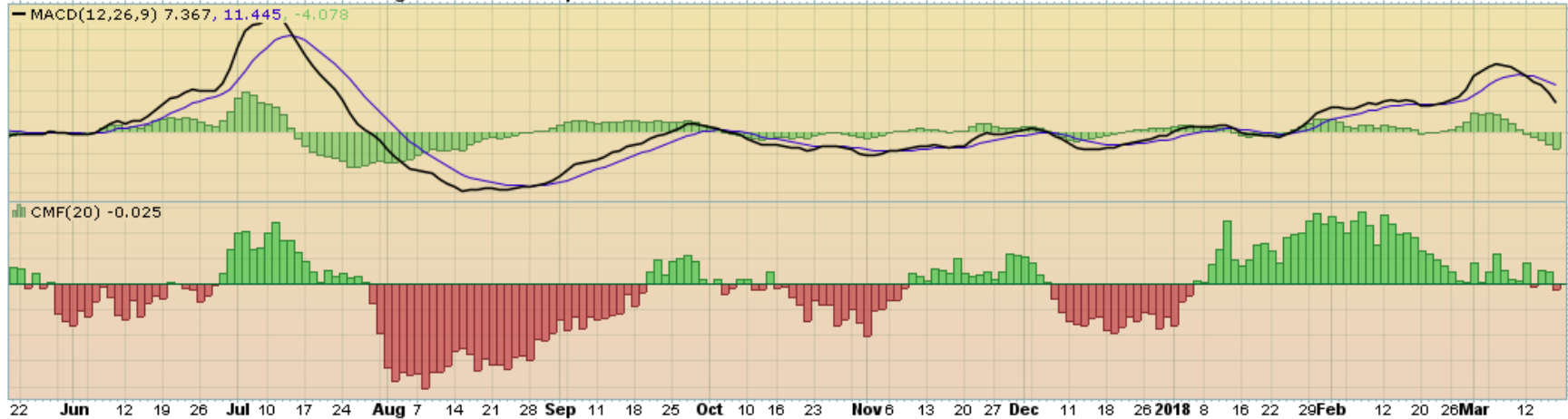
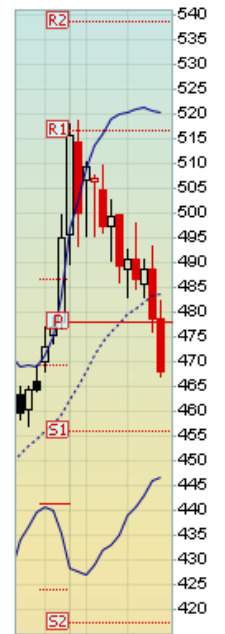
\$WHEAT Wheat - Continuous Contract (EOD) CME
16-Mar-2018

© StockCharts.com

Open 478.75 High 482.25 Low 467.00 Close 467.75 Volume 78.7K Chg -11.00 (-2.30%)

Wheat - Continuous Contract (EOD) (Daily) 467.75
BB(20,2,0) 446.65 - 483.49 - 520.32
PIVOTS 417.00, 456.00, 477.75, 516.75, 538.50

CHART 44. WHEAT, DAILY CHART



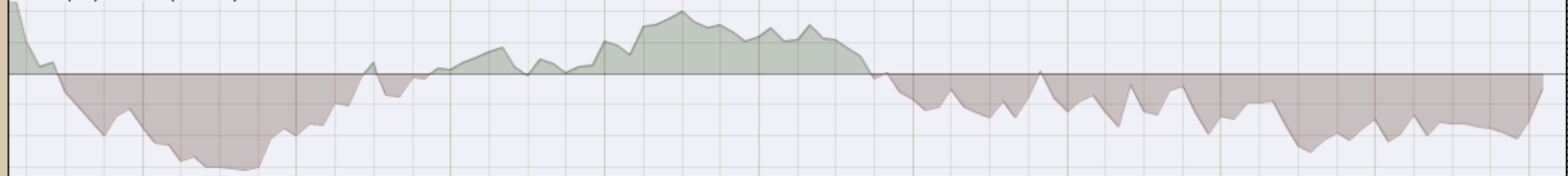
\$WHEAT Wheat - Continuous Contract (EOD) CME

16-Mar-2018

© StockCharts.com

Open 495.50 High 518.50 Low 467.00 Close 467.75 Volume 1.0M Chg -27.25 (-5.51%)

▲ CMF(20) -0.049 (28 Feb)

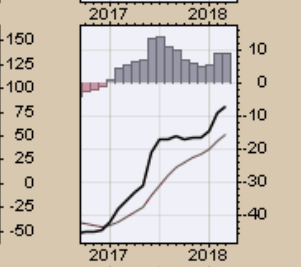
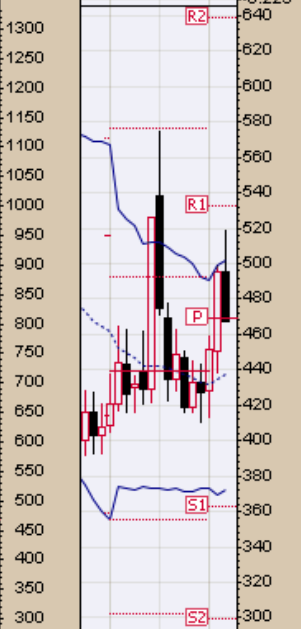
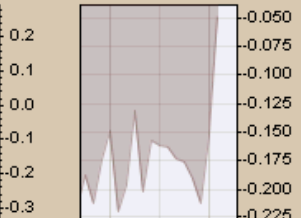
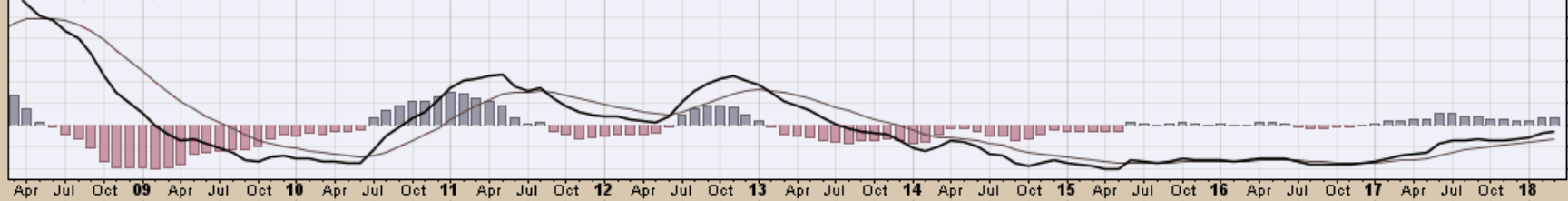


☞ \$WHEAT (Monthly) 467.75
— BB(20,2,0) 372.50 - 437.30 - 502.10
— PIVOTS 299.00, 363.00, 468.75, 532.75, 638.50

CHART 45. WHEAT, MONTHLY CHART



— MACD(12,26,9) -7.056, -15.698, 8.642



S&P Sectors

Chart Book Index

Market Price Considerations for Week Beginning March 19, 2018

Chart Book Index - Sectors

- Chart 46. Financial Sector, Weekly Chart
- Chart 47. Health Care Sector, Weekly Chart
- Chart 48. Technology Sector, Weekly Chart
- Chart 49. Industrial Sector, Weekly Chart
- Chart 50. Materials Sector, Weekly Chart
- Chart 51. Energy Sector, Weekly Chart
- Chart 52. Utilities Sector, Weekly Chart
- Chart 53. Consumer Staples, Weekly Chart
- Chart 54. Consumer Discretionary, Weekly Chart

XLF Financial Select Sector SPDR Fund NYSE

16-Mar-2018

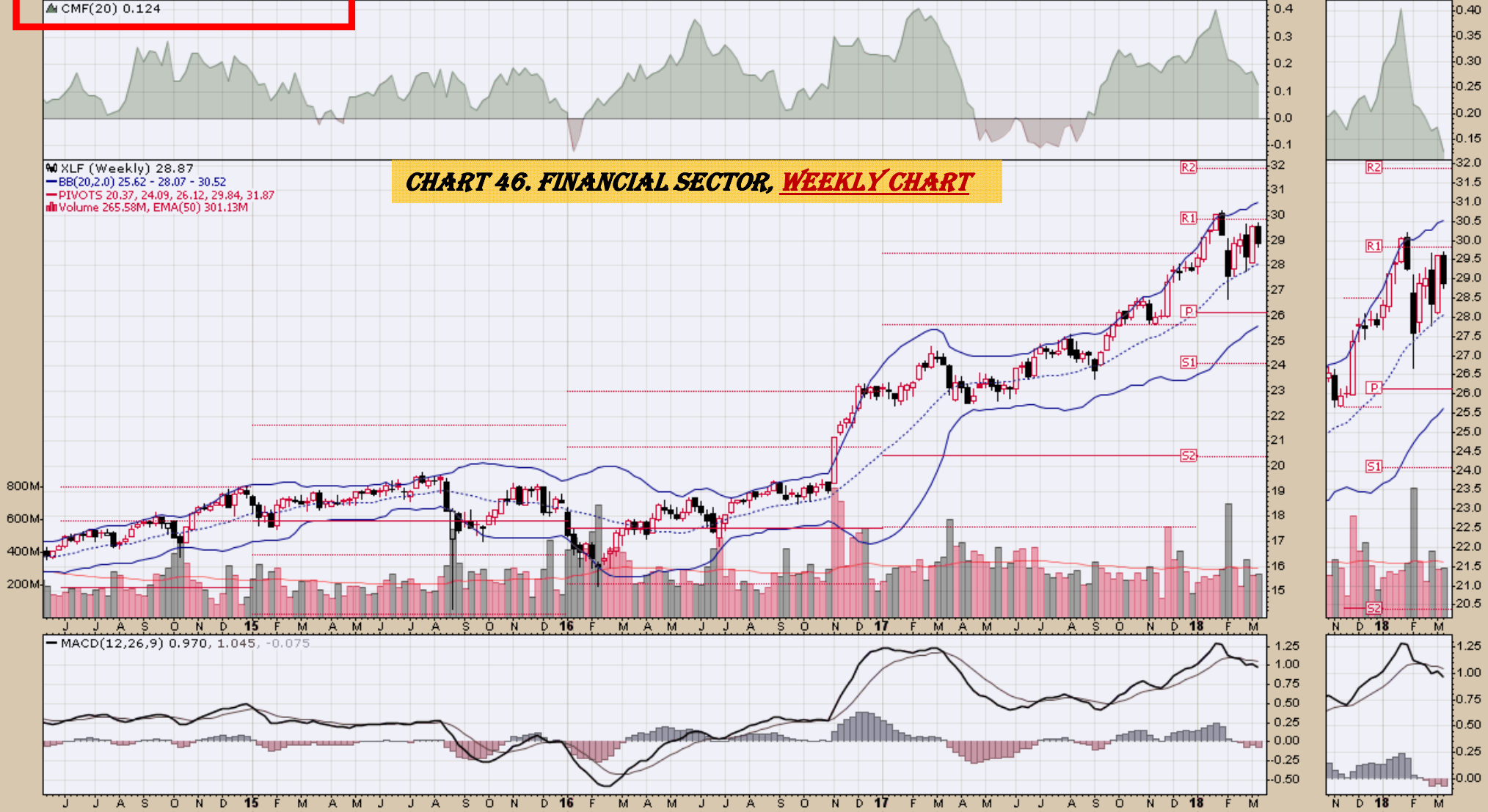
▲ CMF(20) 0.124

Open 29.59 High 29.70 Low 28.75 Close 28.87 Volume 265.6M Chg -0.72 (-2.44%)

© StockCharts.com

CHART 46. FINANCIAL SECTOR, WEEKLY CHART

● XLF (Weekly) 28.87
— BB(20,2.0) 25.62 - 28.07 - 30.52
— PIVOTS 20.37, 24.09, 26.12, 29.84, 31.87
■ Volume 265.58M, EMA(50) 301.13M



XLV Health Care Select Sector SPDR Fund NYSE

16-Mar-2018

▲ CMF(20) 0.174

Open 86.24 High 86.55 Low 85.25 Close 85.39 Volume 34.6M Chg -0.82 (-0.95%)

© StockCharts.com

CHART 47. HEALTH CARE SECTOR, WEEKLY CHART

XLV (Weekly) 85.39
BB(20,2.0) 78.65 - 84.06 - 89.47
PIVOTS 61.49, 71.94, 77.92, 88.37, 94.36
Volume 34.62M, EMA(50) 40.77M



XLK Technology Select Sector SPDR Fund NYSE

16-Mar-2018

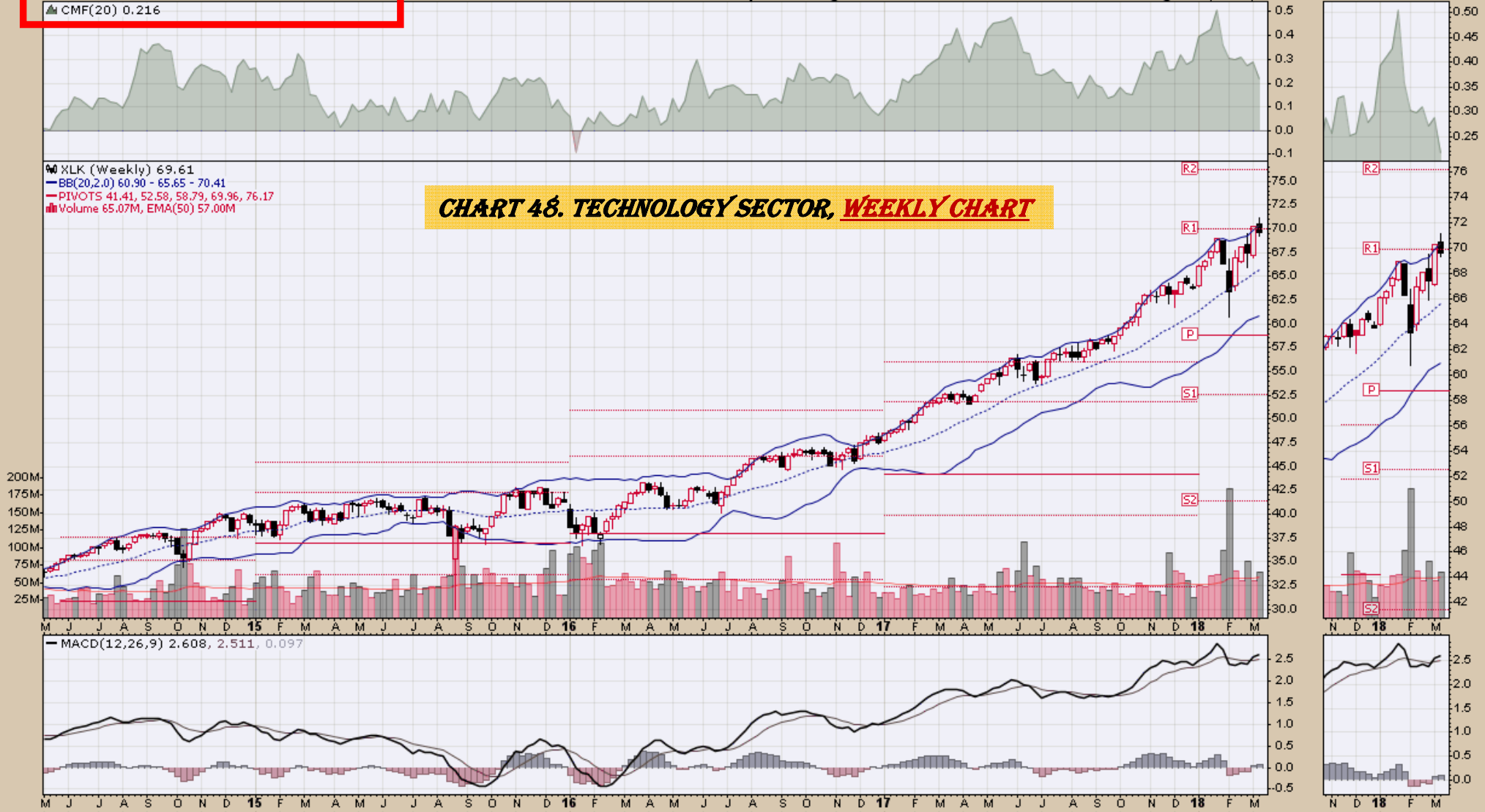
▲ CMF(20) 0.216

Open 70.50 High 71.12 Low 69.29 Close 69.61 Volume 65.1M Chg -0.68 (-0.97%)

© StockCharts.com

CHART 48. TECHNOLOGY SECTOR, WEEKLY CHART

● XLK (Weekly) 69.61
— BB(20,2,0) 60.90 - 65.65 - 70.41
— PIVOTS 41.41, 52.58, 58.79, 69.96, 76.17
■ Volume 65.07M, EMA(50) 57.00M



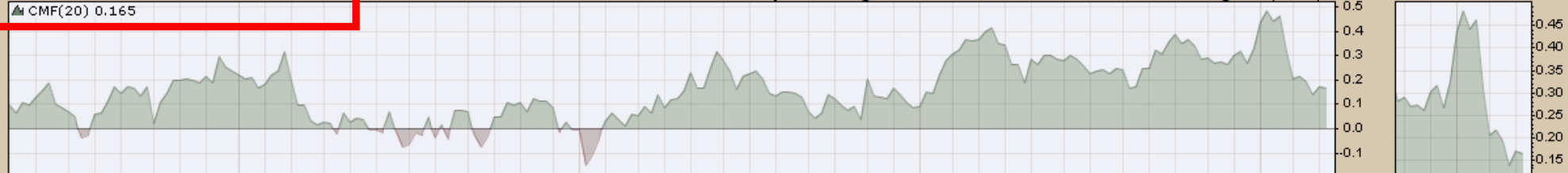
XLI Industrial Select Sector SPDR Fund NYSE

16-Mar-2018

▲ CMF(20) 0.165

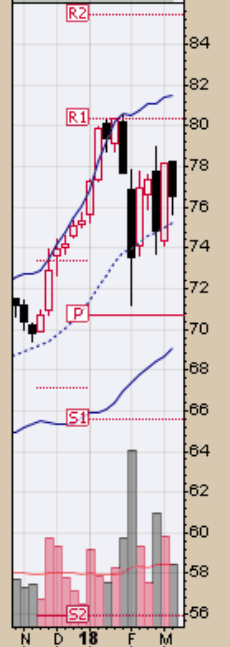
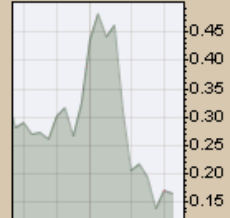
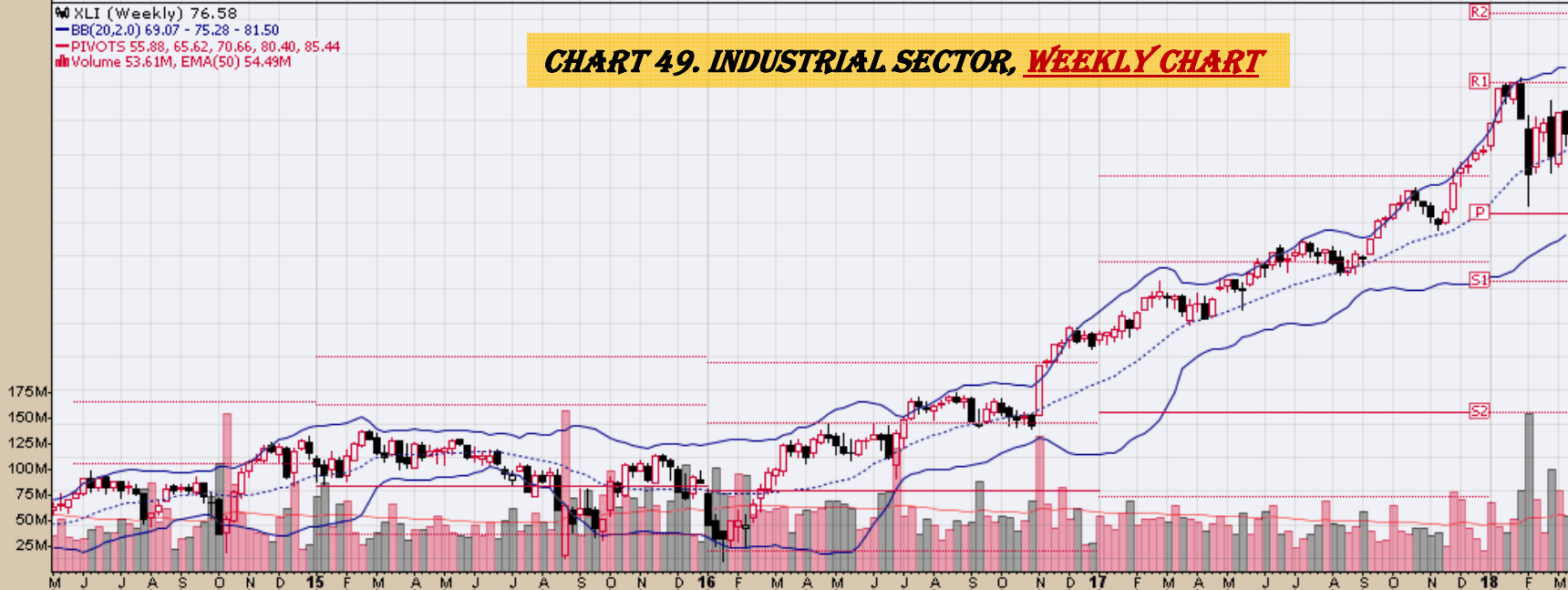
Open 78.26 High 78.26 Low 75.69 Close 76.58 Volume 53.6M Chg -1.55 (-1.99%)

© StockCharts.com

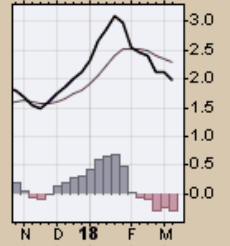
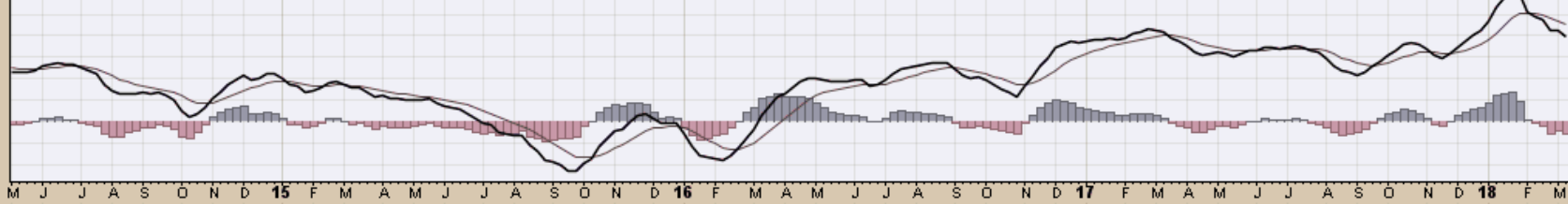


XLI (Weekly) 76.58
BB(20,2.0) 69.07 - 75.28 - 81.50
PIVOTS 55.88, 65.62, 70.66, 80.40, 85.44
Volume 53.61M, EMA(50) 54.49M

CHART 49. INDUSTRIAL SECTOR, WEEKLY CHART



MACD(12,26,9) 1.989, 2.282, -0.293



XLB Materials Select Sector SPDR Fund NYSE

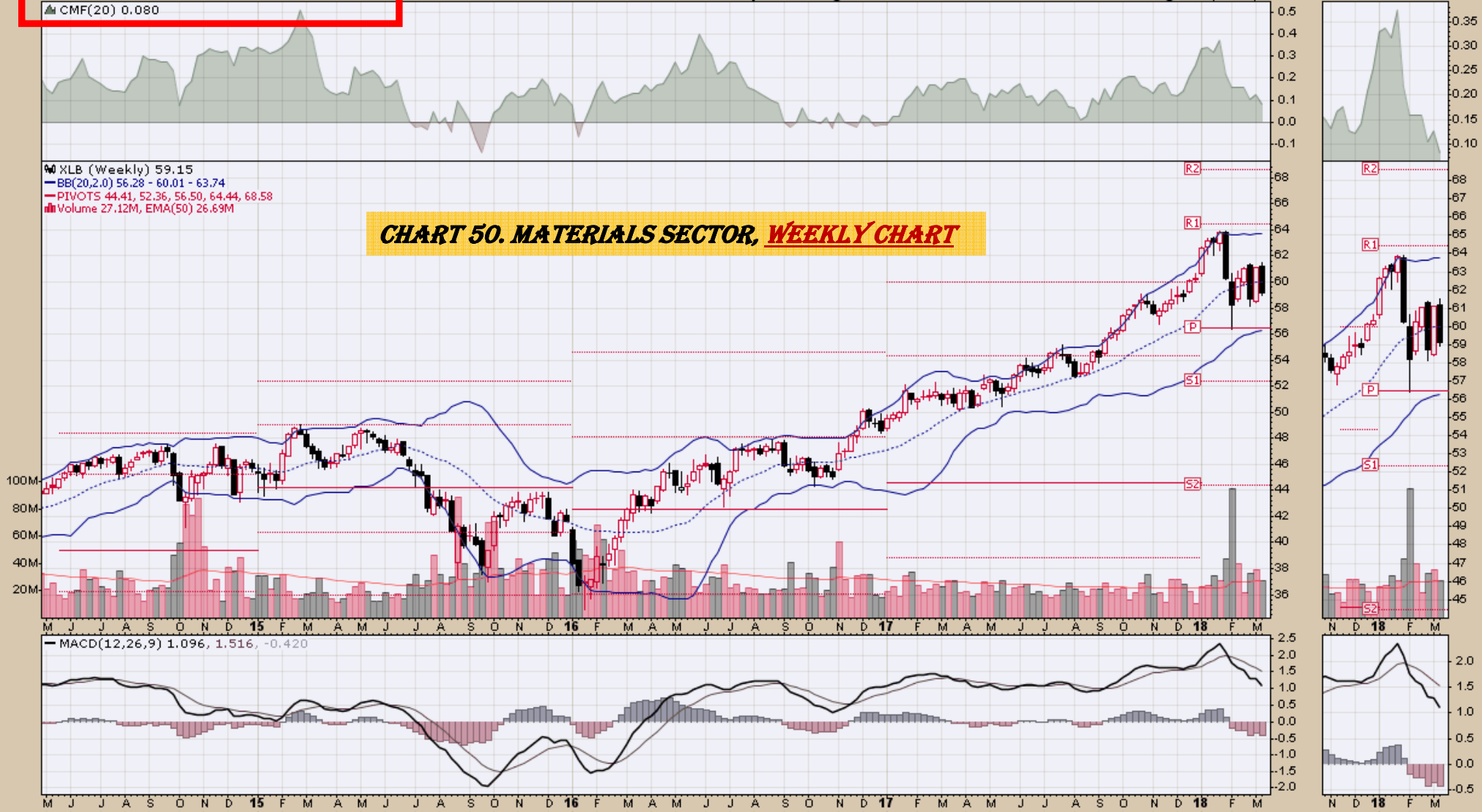
16-Mar-2018

▲ CMF(20) 0.080

© StockCharts.com
Open 61.16 High 61.51 Low 58.93 Close 59.15 Volume 27.1M Chg -1.94 (-3.17%) ▼

● XLB (Weekly) 59.15
— BB(20,2,0) 56.28 - 60.01 - 63.74
— PIVOTS 44.41, 52.36, 56.50, 64.44, 68.58
■ Volume 27.12M, EMA(50) 26.69M

CHART 50. MATERIALS SECTOR, WEEKLY CHART



XLE Energy Select Sector SPDR Fund NYSE

16-Mar-2018

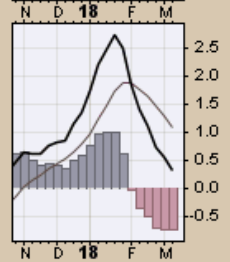
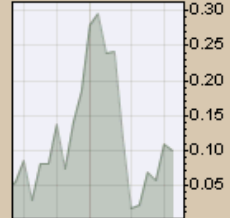
▲ CMF(20) 0.100

Open 68.01 High 68.46 Low 66.21 Close 67.31 Volume 58.6M Chg -0.66 (-0.97%)

© StockCharts.com

CHART 51. ENERGY SECTOR, WEEKLY CHART

XLE (Weekly) 67.31
BB(20,2.0) 62.98 - 69.92 - 76.86
PIVOTS 54.92, 63.33, 68.58, 76.99, 82.24
Volume 58.63M, EMA(50) 70.53M



XLU Utilities Select Sector SPDR Fund NYSE

16-Mar-2018

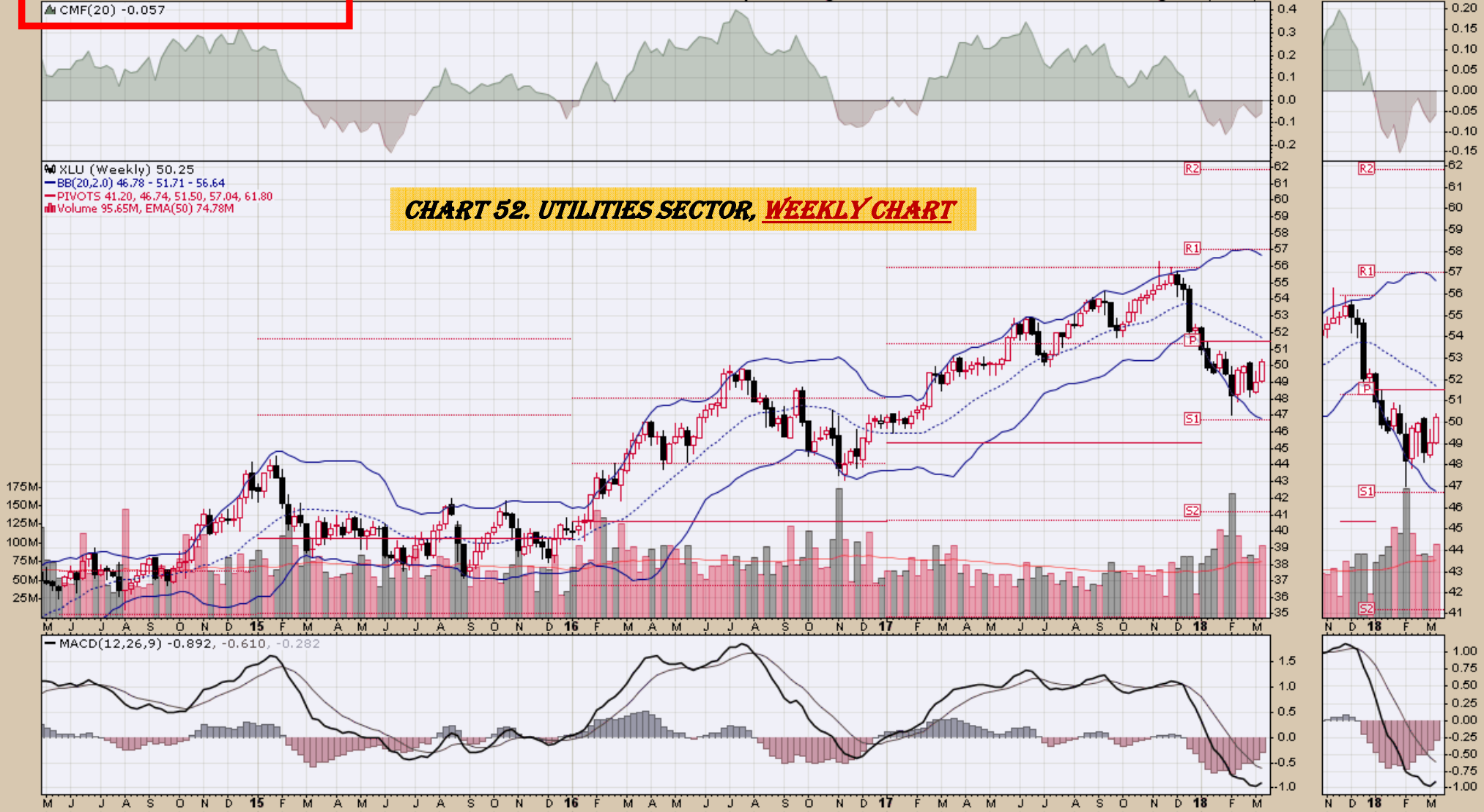
▲ CMF(20) -0.057

Open 49.04 High 50.38 Low 48.96 Close 50.25 Volume 95.6M Chg +1.23 (+2.51%) ▲

© StockCharts.com

● XLU (Weekly) 50.25
— BB(20,2,0) 46.78 - 51.71 - 56.64
— PIVOTS 41.20, 46.74, 51.50, 57.04, 61.80
■ Volume 95.65M, EMA(50) 74.78M

CHART 52. UTILITIES SECTOR, WEEKLY CHART



XLP Consumer Staples Select Sector SPDR Fund NYSE
16-Mar-2018
▲ CMF(20) 0.193

Open 54.32 High 54.60 Low 53.08 Close 53.25 Volume 56.0M Chg -1.05 (-1.93%)

© StockCharts.com

CHART 53. CONSUMER STAPLES SECTOR, WEEKLY CHART

XLP (Weekly) 53.25
BB(20,2.0) 51.99 - 55.20 - 58.42
PIVOTS 47.16, 51.87, 54.43, 59.13, 61.70
Volume 56.01M, EMA(50) 60.01M



XLY Consumer Discretionary Select Sector SPDR Fund NYSE

16-Mar-2018

▲ CMF(20) 0.214

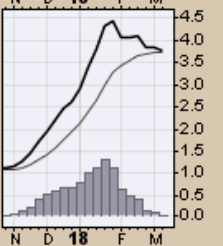
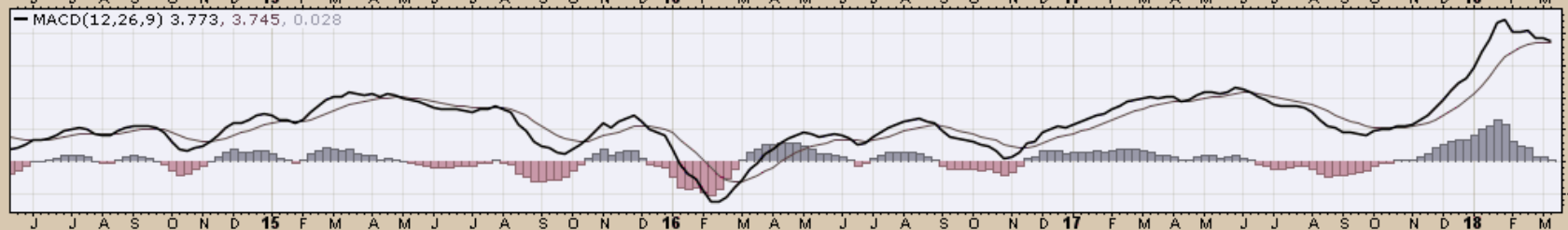
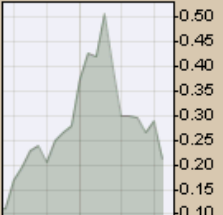
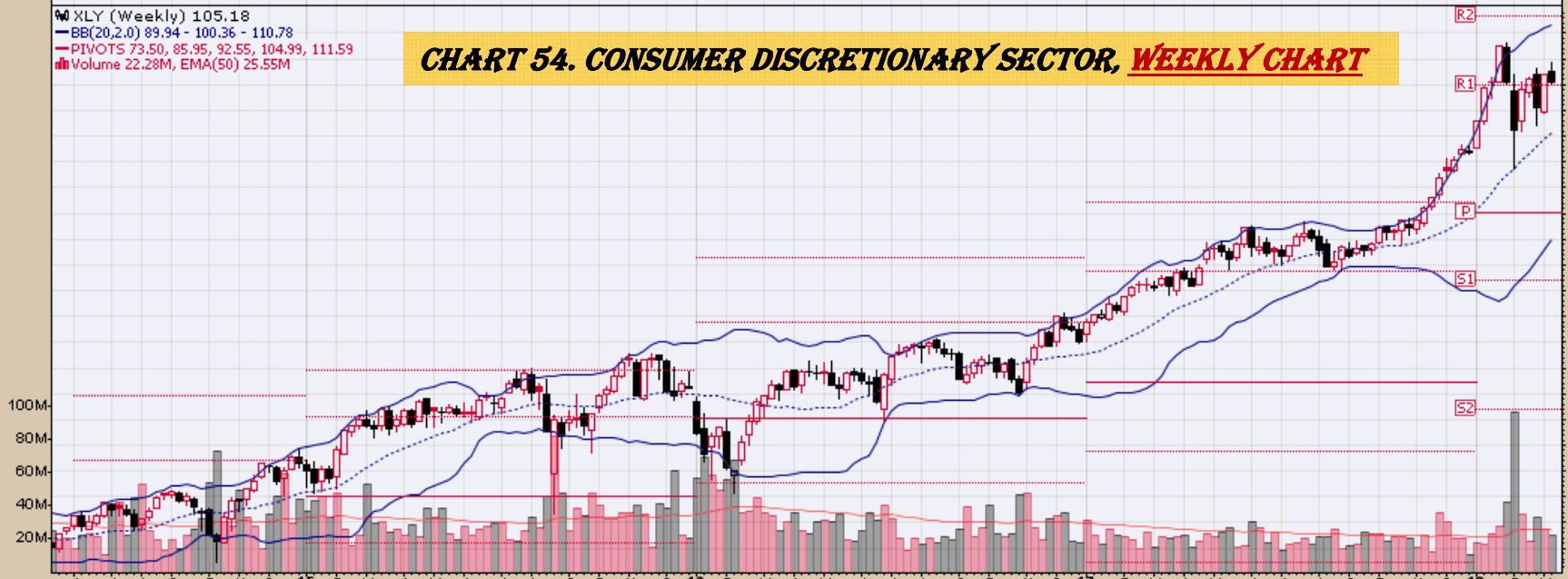
Open 106.28 High 107.08 Low 105.11 Close 105.18 Volume 22.3M Chg -0.75 (-0.71%)

© StockCharts.com



XLY (Weekly) 105.18
BB(20,2,0) 89.94 - 100.36 - 110.78
PIVOTS 73.50, 85.95, 92.55, 104.99, 111.59
Volume 22.28M, EMA(50) 25.55M

CHART 54. CONSUMER DISCRETIONARY SECTOR, WEEKLY CHART



End