

***Market Outlook Considerations
Week Beginning
March 12, 2018***

DISCLAIMER-FOR-EDUCATIONAL-PURPOSES-ONLY

**Bobby Coats, Ph.D.
Professor – Economics
Department of Agricultural Economics and Agribusiness
University of Arkansas System
Division of Agriculture
Cooperative Extension Service**

Chart Book Index

Market Outlook Considerations for Week Beginning March 12, 2018

Chart Book Index

- Chart 1. \$UST10Y - 10-Year US Treasury Yield, Weekly Chart
- Chart 2. \$UST10Y - 10-Year US Treasury Yield, Daily Chart
- Chart 3. \$UST10Y - 10-Year US Treasury Yield, Daily Chart
- Chart 4. Power Shares US Dollar Index, Weekly Chart
- Chart 5. Power Shares US Dollar Index, Daily Chart
- Chart 6. Power Shares US Dollar Index, Monthly
- Chart 7. EURO Monthly Chart
- Chart 8. Australian Dollar Monthly Chart
- Chart 9. Canadian Dollar Monthly Chart
- Chart 10. Japanese Yen Monthly Chart
- Chart 11. British Pound Monthly Chart
- Chart 12. Dow Jones, Monthly Chart
- Chart 13. Dow Transports Monthly Chart
- Chart 14. S&P 500 Large Caps Monthly Chart
- Chart 15. Nasdaq Composite, Monthly Chart

Continued Next Slide

Chart Book Index

Market Outlook Considerations for Week Beginning March 12, 2018

Chart Book Index

- Chart 16. World less U.S. & Canada Monthly Chart
- Chart 17. Emerging Markets Monthly Chart
- Chart 18. Australia Monthly Chart
- Chart 19. Brazil Monthly Chart
- Chart 20. Canada Monthly Chart
- Chart 21. China Monthly Chart
- Chart 22. Mexico Monthly Chart
- Chart 23. Japan Monthly Chart
- Chart 24. Russia Monthly Chart
- Chart 25. India Monthly Chart
- Chart 26. \$CRB Reuters/Jefferies CRB Index, Weekly Chart
- Chart 27. \$CRB Reuters/Jefferies CRB Index
- Chart 28. \$CRB Reuters/Jefferies CRB Index
- Chart 29. \$WTIC, Weekly Chart
- Chart 30. \$WTIC, Daily Chart

Continued Next Slide

Chart Book Index

Market Outlook Considerations for Week Beginning March 12, 2018

Chart Book Index

- Chart 31. \$WTIC, Monthly Chart
- Chart 32. Soybeans, Weekly Chart
- Chart 33. Soybeans, Daily Chart
- Chart 34. Soybeans, Monthly Chart
- Chart 35. Corn, Weekly Chart
- Chart 36. Corn, Daily Chart
- Chart 37. Corn, Monthly Chart
- Chart 38. Rough Rice, Weekly
- Chart 39. Rough Rice, Daily Chart
- Chart 40. Cotton, Weekly Chart
- Chart 41. Cotton, Daily Chart
- Chart 42. Cotton, Monthly Chart
- Chart 43. Wheat, Weekly Chart
- Chart 44. Wheat, Daily Chart
- Chart 45. Wheat, Monthly Chart

Continued Next Slide

Chart Book Index

Market Outlook Considerations for Week Beginning March 12, 2018

Chart Book Index - Sectors

- Chart 46. Financial Sector, Weekly Chart
- Chart 47. Health Care Sector, Weekly Chart
- Chart 48. Technology Sector, Weekly Chart
- Chart 49. Industrial Sector, Weekly Chart
- Chart 50. Materials Sector, Weekly Chart
- Chart 51. Energy Sector, Weekly Chart
- Chart 52. Utilities Sector, Weekly Chart
- Chart 53. Consumer Staples, Weekly Chart
- Chart 54. Consumer Discretionary, Weekly Chart

Continued Next Slide

***\$UST10Y – 10 Year US Treasury Yield
Weekly, Daily and Monthly Charts***

\$UST10Y 10-Year US Treasury Yield (EOD) INDX

9-Mar-2018

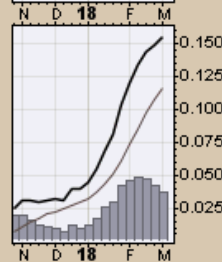
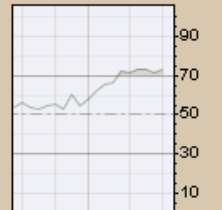
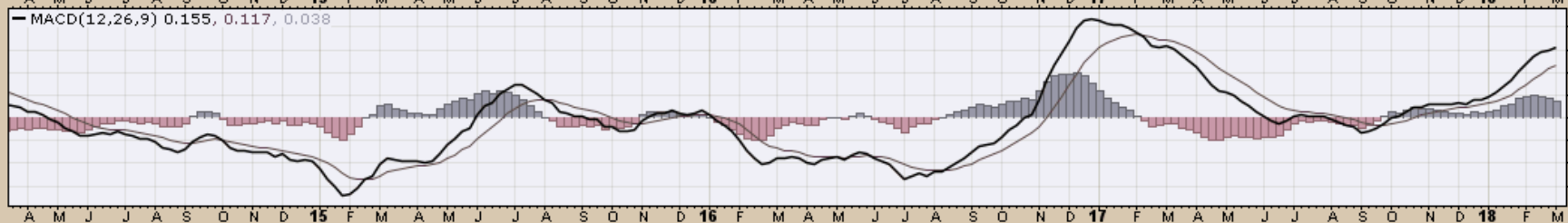
Open 2.88 High 2.90 Low 2.86 Close 2.90 Chg +0.04 (+1.40%) ▲

© StockCharts.com

RSI(14) 73.20

Chart 1. \$UST10Y - 10-Year US Treasury Yield, **Weekly Chart**

\$UST10Y (Weekly) 2.90
BB(20,2,0) 2.14 - 2.57 - 2.99
PIVOTS 1.79, 2.09, 2.36, 2.66, 2.93
Volume undef



\$UST10Y 10-Year US Treasury Yield (EOD) INDX

9-Mar-2018

Open 2.900 High 2.900 Low 2.900 Close 2.900 Chg +0.040 (+1.40%) ▲

© StockCharts.com

— \$UST10Y (Daily) 2.900
— MA(50) 2.718
— MA(200) 2.392
— PIVOTS 2.690, 2.780, 2.860, 2.950, 3.030
■ Volume under

Chart 2. \$UST10Y - 10-Year US Treasury Yield, Daily Chart

Sideways trading range – New Highs Possible

- Closing above 3.00 would start the process of considering a trend reversal



\$UST10Y 10-Year US Treasury Yield (EOD) INDX

9-Mar-2018

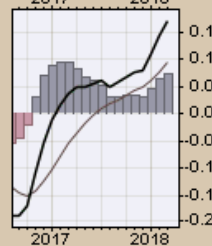
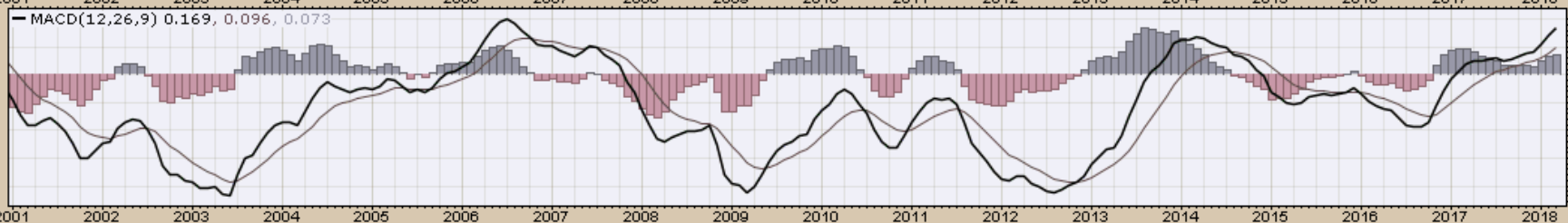
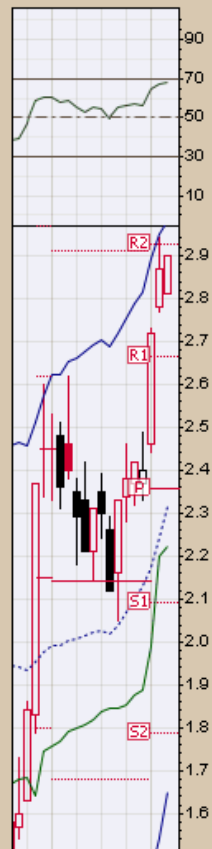
Open 2.81 High 2.90 Low 2.81 Close 2.90 Chg +0.03 (+1.05%) ▲

© StockCharts.com

▲ RSI(14) 68.13



Chart 3. \$UST10Y - 10-Year US Treasury Yield, **Daily Chart**



US Dollar Index
Weekly, Daily and Monthly Charts

\$USD US Dollar Index - Cash Settle (EOD) ICE

© StockCharts.com

9-Mar-2018

Open 89.83 High 90.36 Low 89.33 Close 90.07 Chg +0.16 (+0.18%) ▲

▲ RSI(14) 39.57

● \$USD (Weekly) 90.07
— MA(200) 94.18
— CHANDLR(22,3,0) 91.12
— PIVOTS 82.72, 87.27, 95.54, 100.10, 108.37

Chart 4. U.S. Dollar Index, Weekly Chart



\$USD US Dollar Index - Cash Settle (EOD) ICE

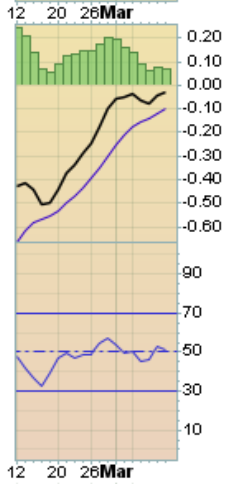
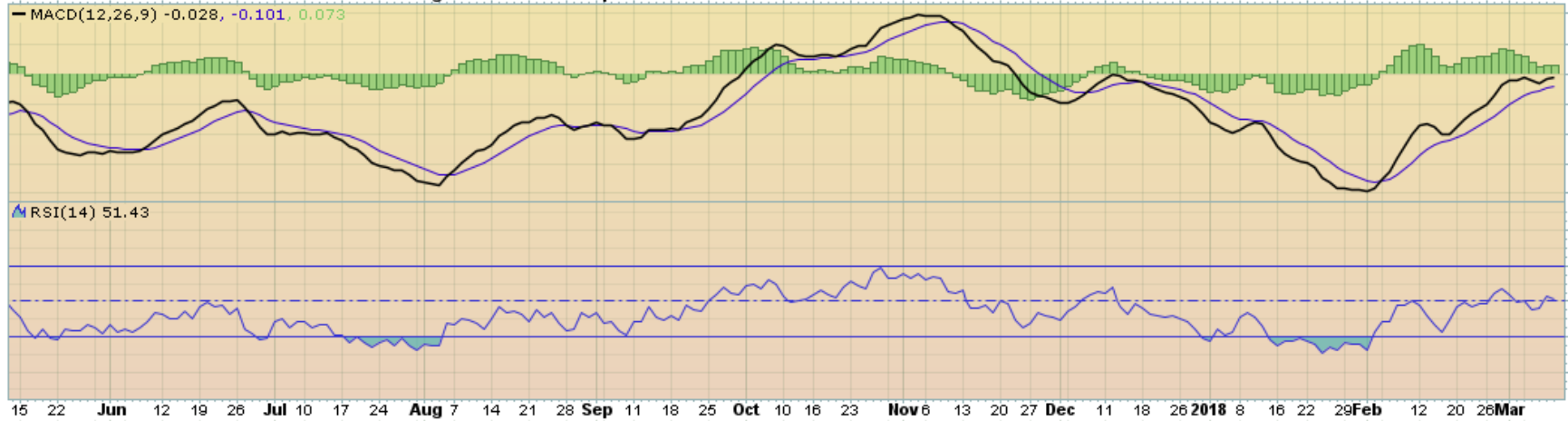
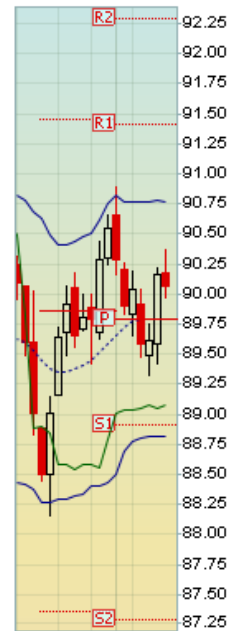
9-Mar-2018

© StockCharts.com

Open 90.18 High 90.36 Low 89.96 Close 90.07 Chg -0.09 (-0.10%)



Chart 5. US Dollar Index, Daily Chart



\$USD US Dollar Index - Cash Settle (EOD) ICE

© StockCharts.com

9-Mar-2018

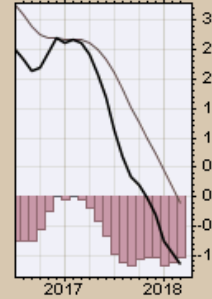
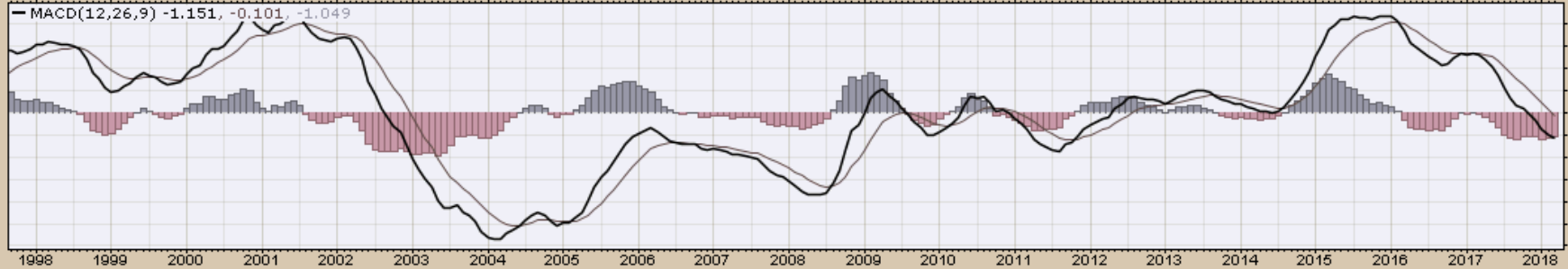
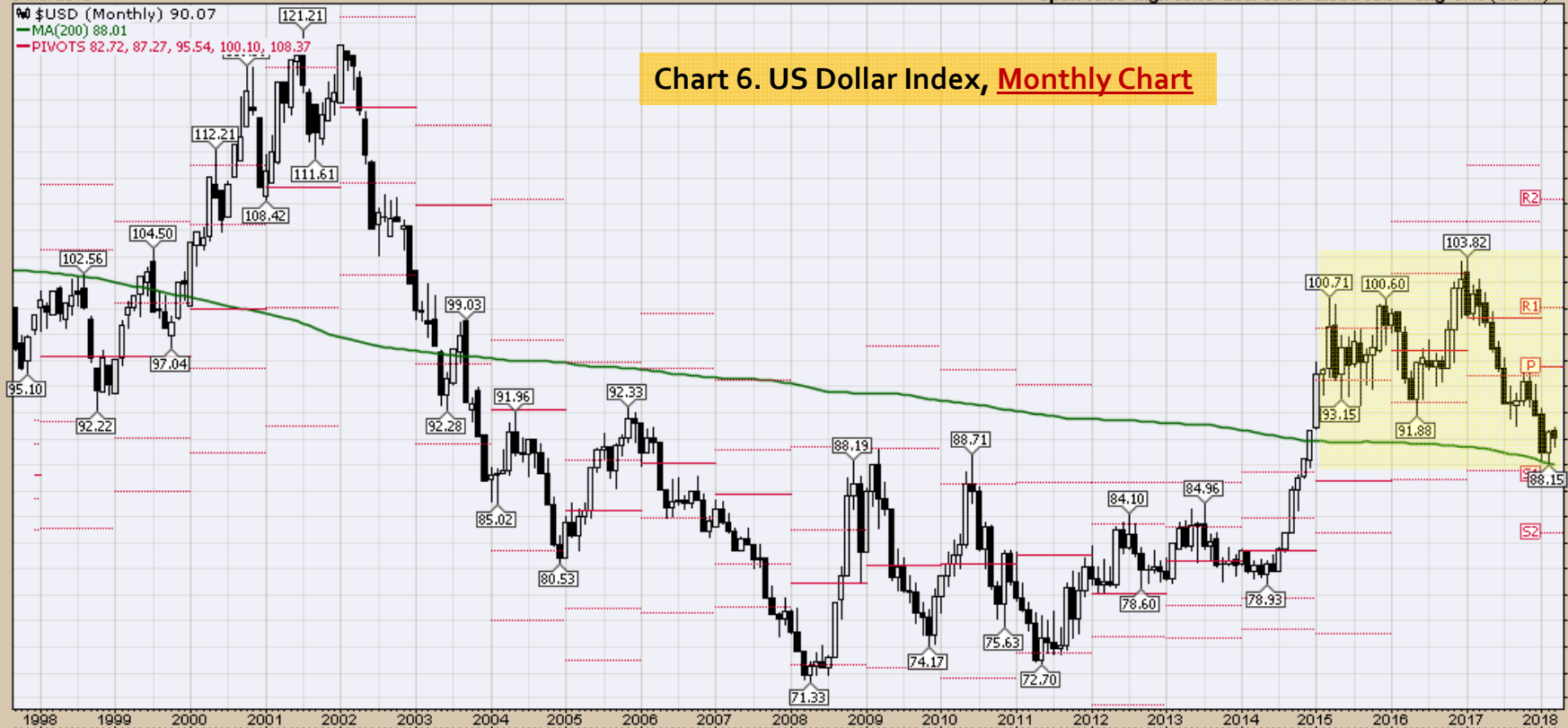
Open 90.65 High 90.89 Low 89.33 Close 90.07 Chg -0.49 (-0.54%)

\$USD (Monthly) 90.07

MA(200) 88.01

PIVOTS 82.72, 87.27, 95.54, 100.10, 108.37

Chart 6. US Dollar Index, Monthly Chart



Select Currency Charts
Monthly Charts

\$XEU Euro - Philadelphia INDX

9-Mar-2018

© StockCharts.com

Open 121.89 High 124.46 Low 121.55 Close 123.07 Chg +1.10 (+0.90%)▲

\$XEU (Monthly) 123.07

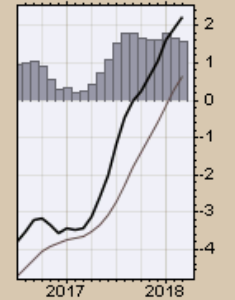
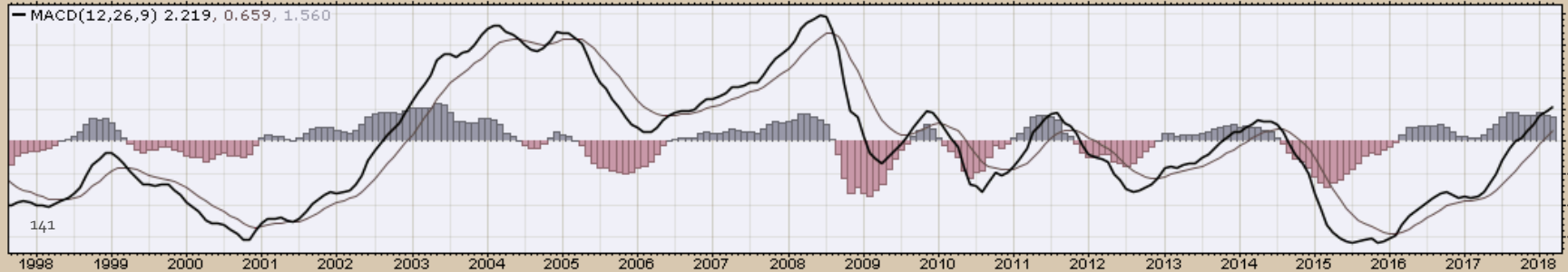
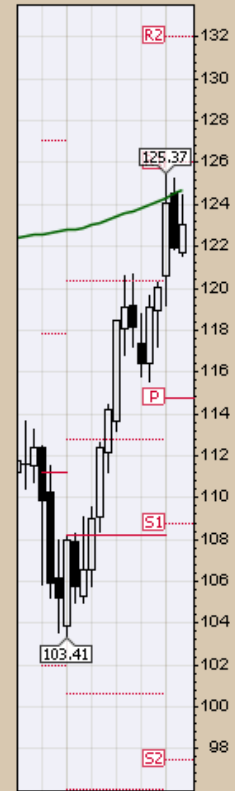
MA(200) 124.68

PIVOTS 97.44, 108.75, 114.72, 126.02, 131.99



Chart 7. EURO, Monthly Chart

- Trend remains up with corrections along the way



\$XAD Australian Dollar - Philadelphia INDX

9-Mar-2018

© StockCharts.com

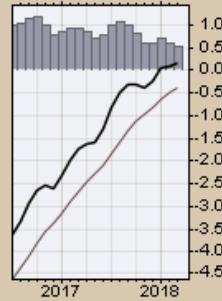
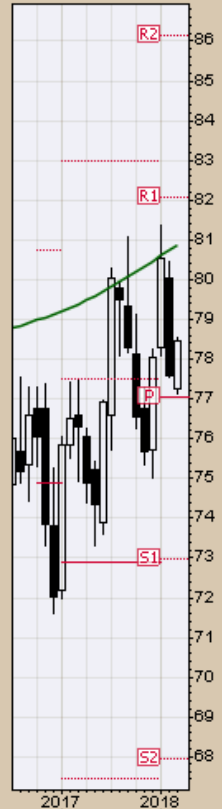
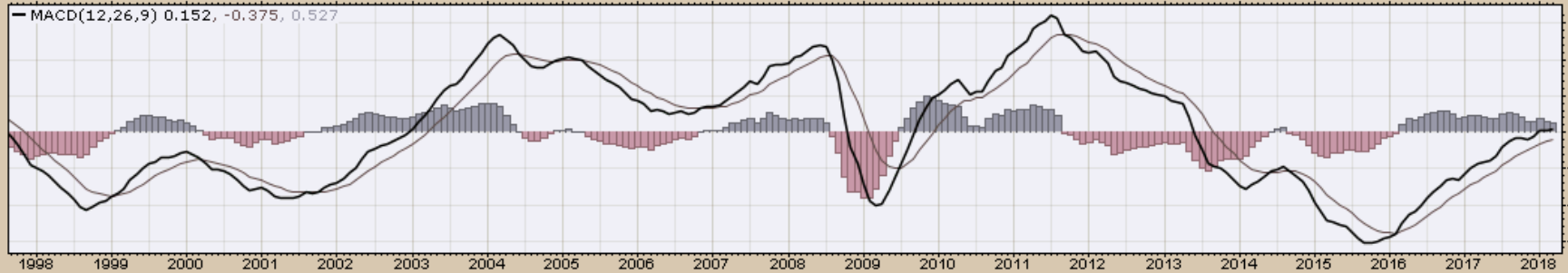
\$XAD (Monthly) 78.47

MA(200) 80.89

PIVOTS 67.93, 72.99, 77.03, 82.08, 86.12

Open 77.27 High 78.54 Low 77.15 Close 78.47 Chg +0.88 (+1.14%) ▲

Chart 8. Australian Dollar, Monthly Chart



\$CDW Canadian Dollar - Philadelphia INDX

© StockCharts.com

9-Mar-2018

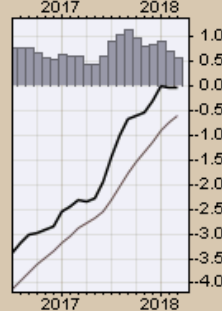
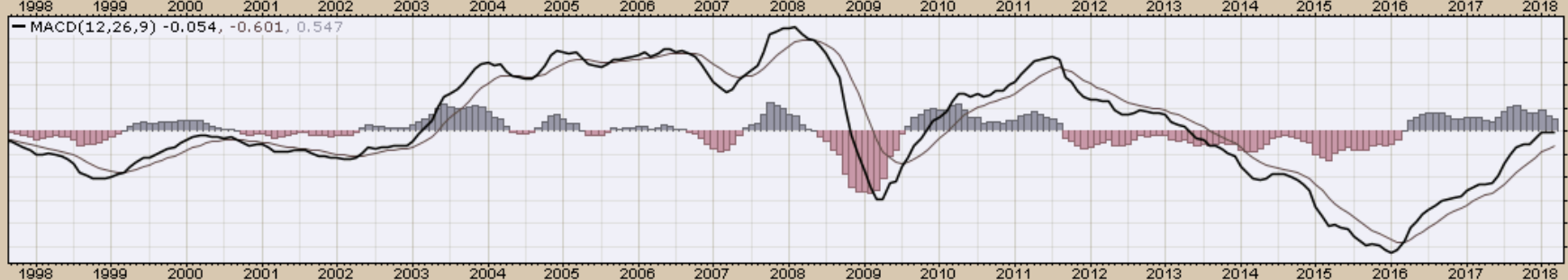
Open 77.78 High 78.07 Low 76.91 Close 78.05 Chg +0.11 (+0.14%)▲

\$CDW (Monthly) 78.05

MA(200) 85.36

PIVOTS 68.03, 73.78, 78.29, 84.04, 88.55

Chart 9. Canadian Dollar, Monthly Chart



\$XJY Japanese Yen - Philadelphia INDX

9-Mar-2018

© StockCharts.com

\$XJY (Monthly) 93.62

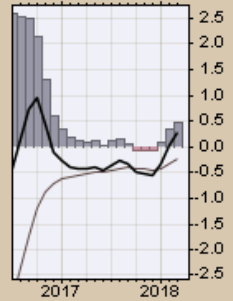
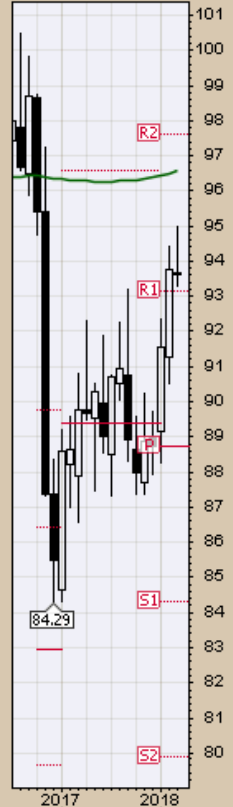
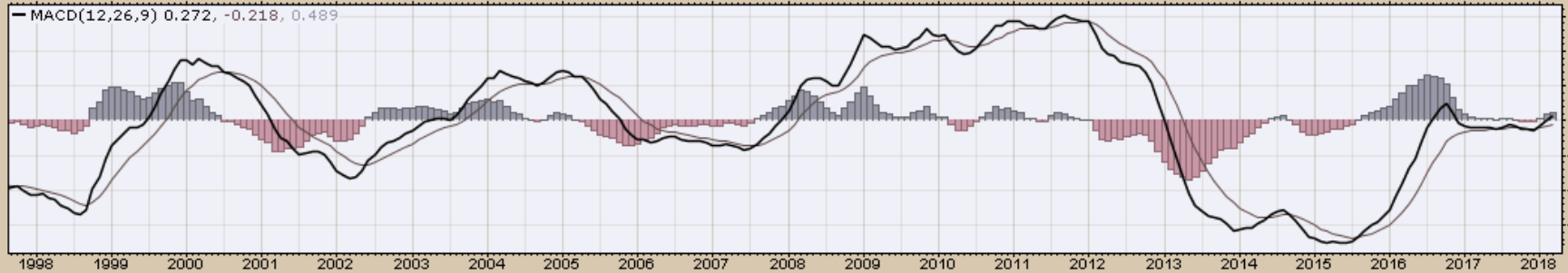
MA(200) 96.57

PIVOTS 79.87, 84.30, 88.74, 93.17, 97.61

Open 93.66 High 95.00 Low 93.28 Close 93.62 Chg -0.13 (-0.14%)

Chart 10. Japanese Yen, Monthly Chart

- Slowly regaining positive momentum



\$XBP British Pound - Philadelphia INDXX

© StockCharts.com

9-Mar-2018

Open 137.42 High 139.29 Low 137.12 Close 138.49 Chg +0.86 (+0.63%) ▲

\$XBP (Monthly) 138.49

MA(200) 163.01

PIVOTS 114.49, 124.80, 130.69, 141.00, 146.89

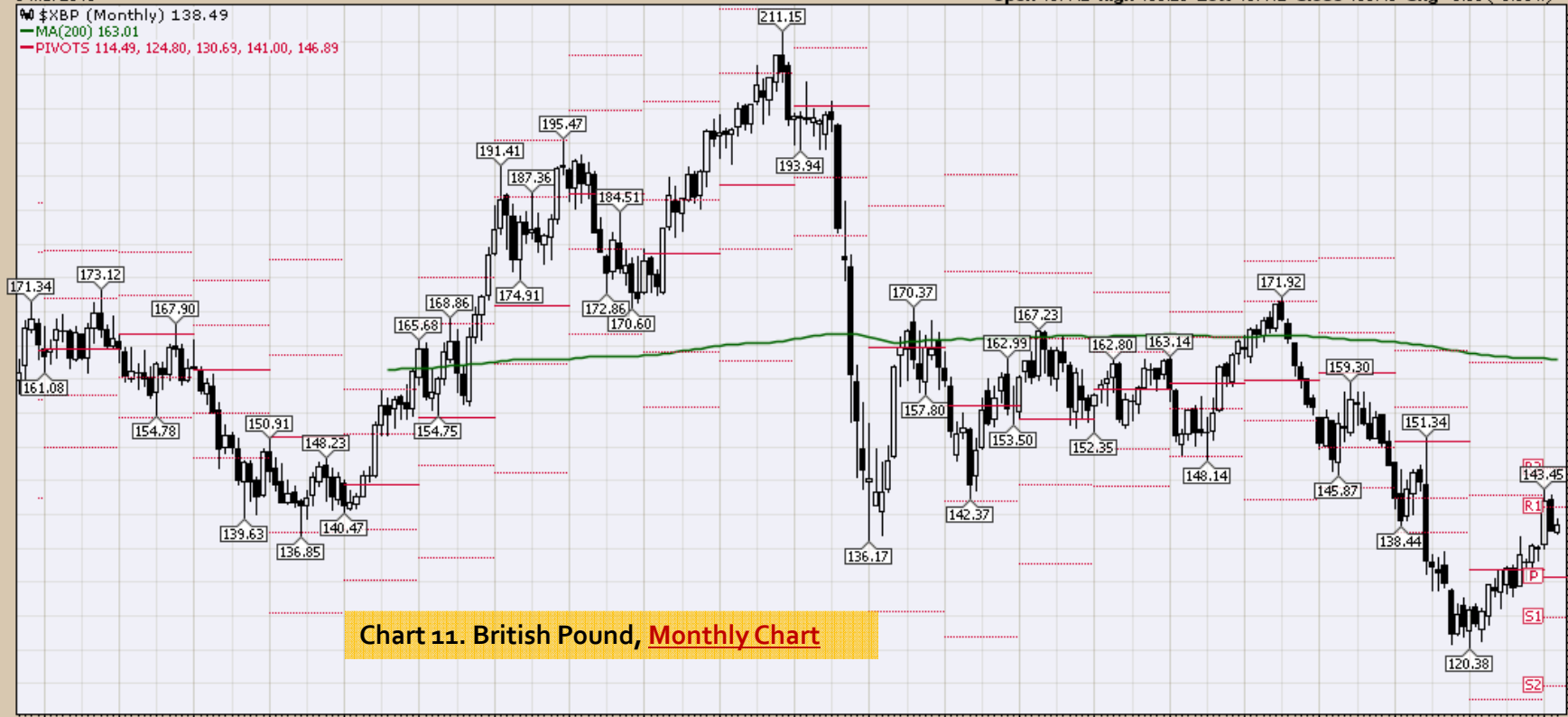
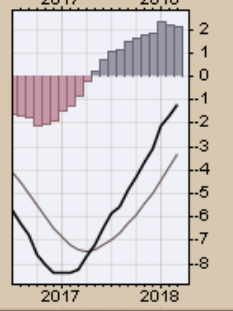
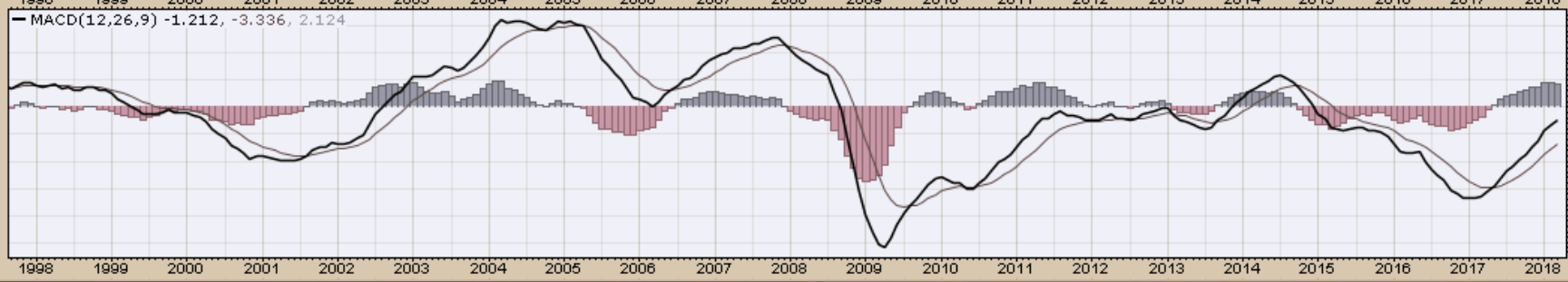
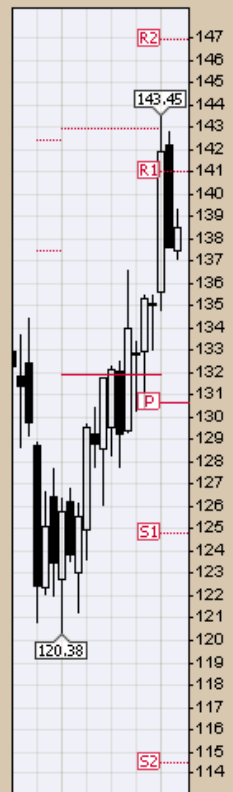


Chart 11. British Pound, Monthly Chart



Select Equity and Transportation Charts
Monthly Charts

\$INDU Dow Jones Industrial Average INDEX

9-Mar-2018

Open 25024.04 High 25336.33 Low 24217.76 Close 25335.74 Volume 2.8B Chg +306.54(+1.22%)

© StockCharts.com

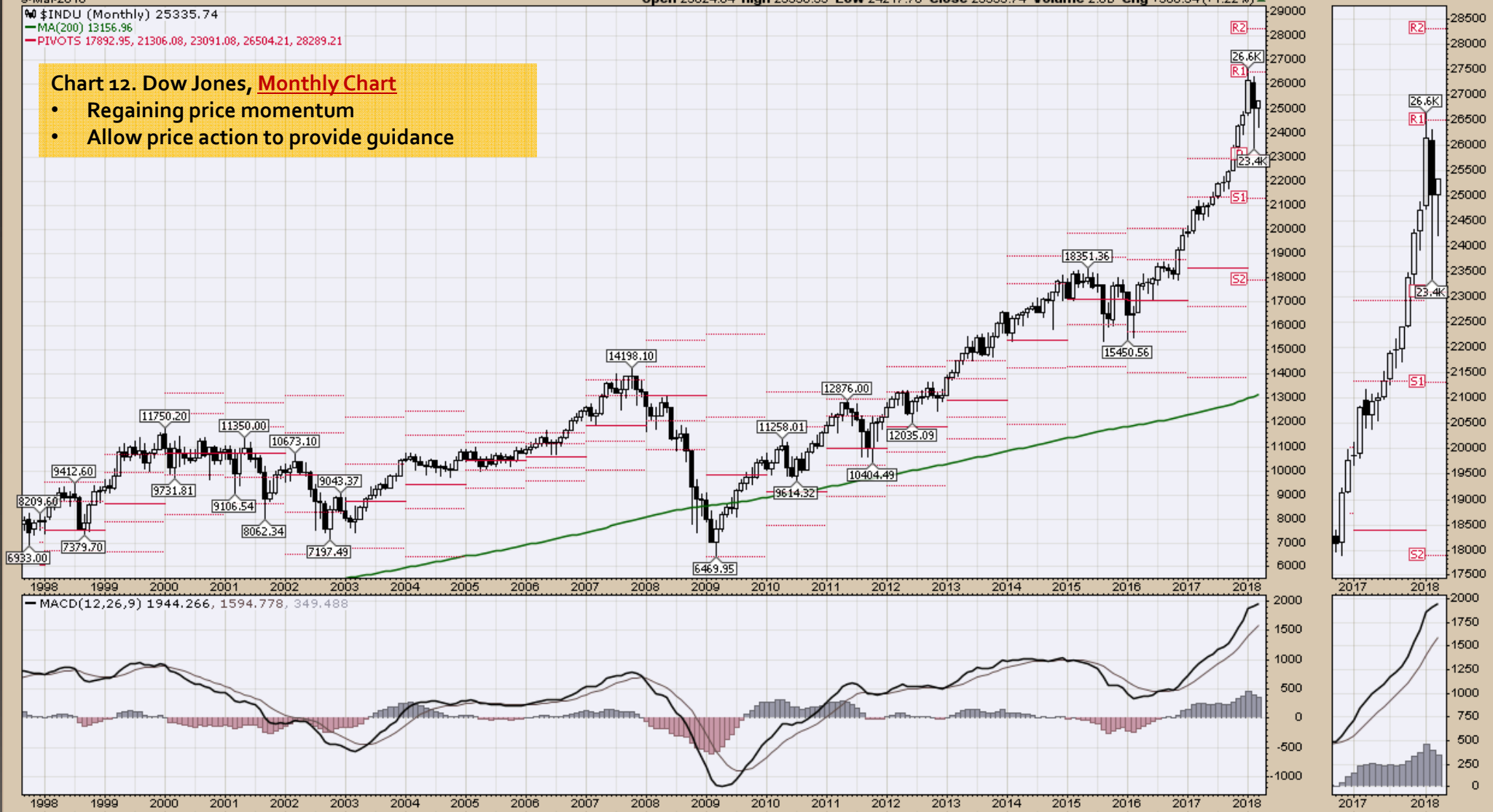
\$INDU (Monthly) 25335.74

MA(200) 13156.96

PIVOTS 17892.95, 21306.08, 23091.08, 26504.21, 28289.21

Chart 12. Dow Jones, Monthly Chart

- Regaining price momentum
- Allow price action to provide guidance



\$TRAN Dow Jones Transportation Average INDEX

9-Mar-2018

Open 10377.72 High 10741.71 Low 10146.57 Close 10739.91 Volume 377.9M Chg +357.92 (+3.45%)▲

© StockCharts.com

\$TRAN (Monthly) 10739.91

MA(200) 5292.14

PIVOTS 8036.46, 9324.38, 10032.27, 11320.19, 12028.08

Chart 13. Dow Transports, **Monthly Chart**

- Regaining price momentum
- Allow price action to provide guidance



\$SPX S&P 500 Large Cap Index INDX

9-Mar-2018

© StockCharts.com

Open 2715.22 High 2786.57 Low 2647.32 Close 2786.57 Volume 16.2B Chg +72.74 (+2.68%) ▲

\$SPX (Monthly) 2786.57

MA(200) 1465.78

PIVOTS 2088.06, 2380.84, 2537.90, 2830.68, 2987.74

Chart 14. S&P 500 Large Caps, Monthly Chart

- Regaining price momentum
- Allow price action to provide guidance



\$COMPQ Nasdaq Composite INDEX

9-Mar-2018

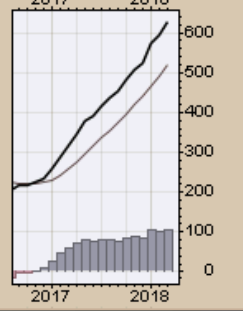
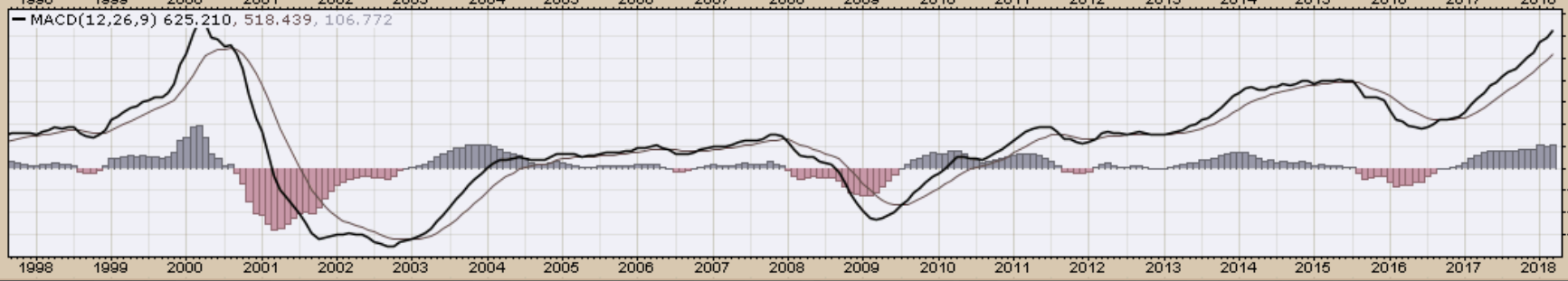
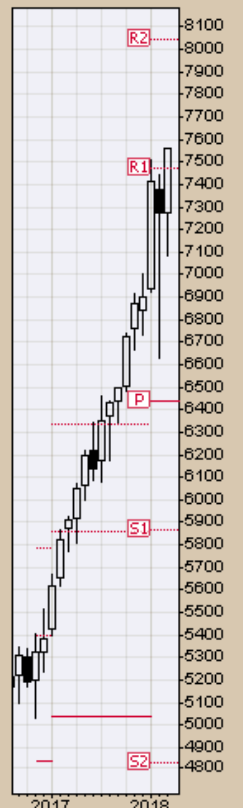
Open 7274.75 High 7560.81 Low 7084.83 Close 7560.81 Volume 15.5B Chg +287.80 (+3.96%) ▲

© StockCharts.com

\$COMPQ (Monthly) 7560.81
MA(200) 3059.25
PIVOTS 4829.19, 5866.29, 6435.09, 7472.19, 8040.99

Chart 15. Nasdaq Composite, Monthly Chart

- Regaining price momentum
- Allow price action to provide guidance



Select Global Equity Charts

■ EFA (Monthly) 70.78
— MA(200) undef
— PIVOTS 51.49, 60.90, 65.74, 75.15, 79.99

Chart 16. World less U.S. & Canada, **Monthly Chart**

- Regaining price momentum
- Allow price action to provide guidance



9-Mar-2018

Open 48.37 High 49.77 Low 47.10 Close 49.75 Volume 450.7M Chg +1.73 (+3.60%) ▲

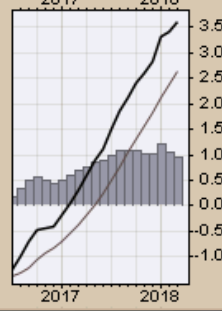
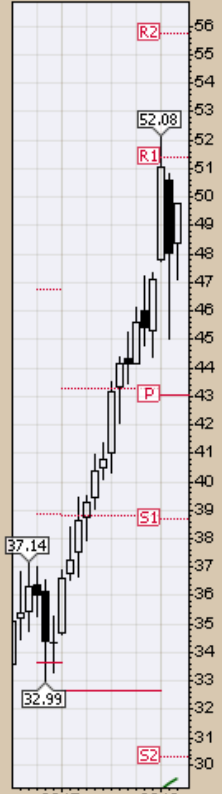
▲ EEM (Monthly) 49.75

— MA(200) 29.53

— PIVOTS 30.31, 38.72, 43.02, 51.42, 55.72

Chart 17. Emerging Markets, **Monthly Chart**

- Regaining price momentum
- Allow price action to provide guidance



9-Mar-2018

Open 22.81 High 23.32 Low 22.47 Close 23.31 Volume 15.3M Chg +0.49 (+2.15%)▲

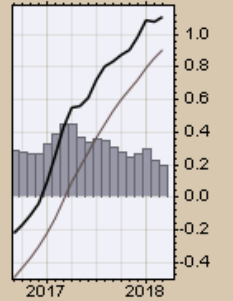
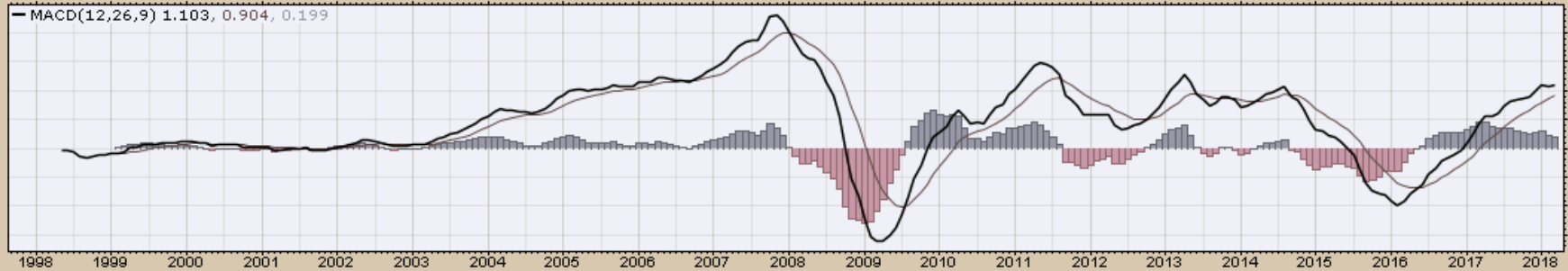
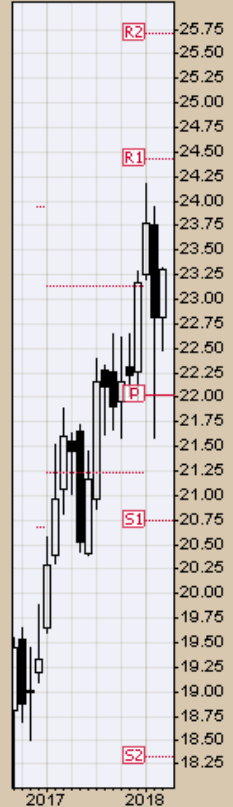
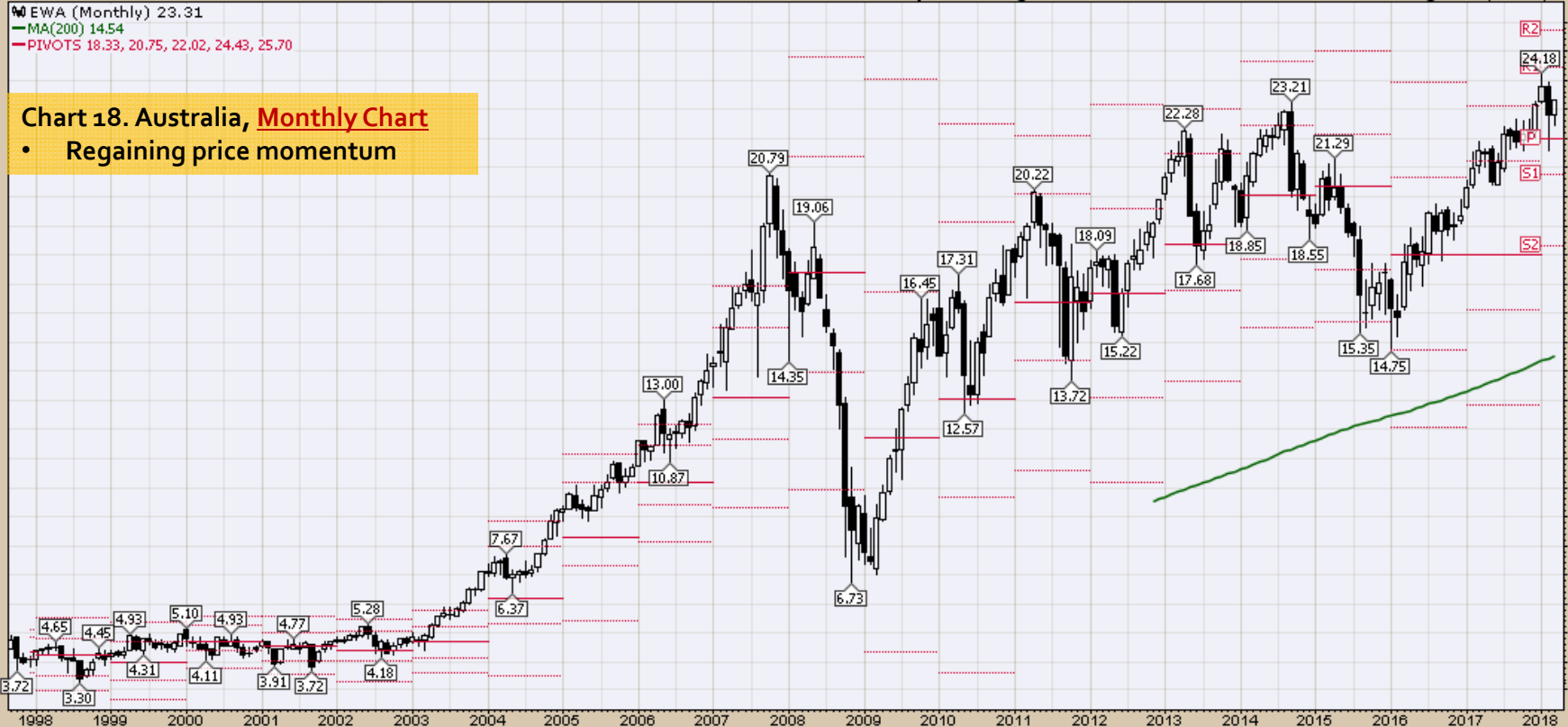
▲ EWA (Monthly) 23.31

— MA(200) 14.54

— PIVOTS 18.33, 20.75, 22.02, 24.43, 25.70

Chart 18. Australia, Monthly Chart

- Regaining price momentum



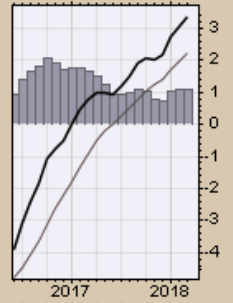
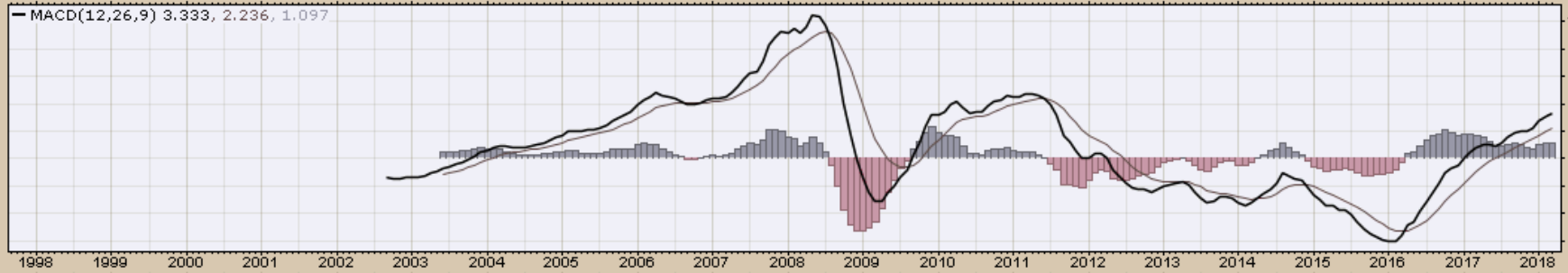
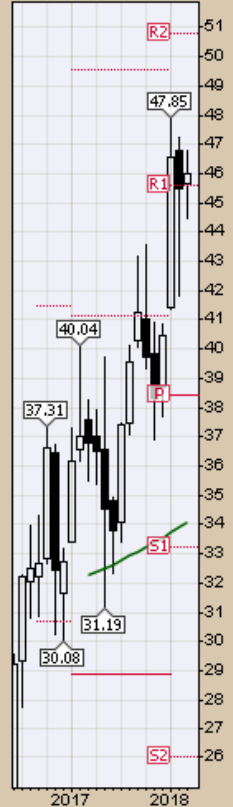
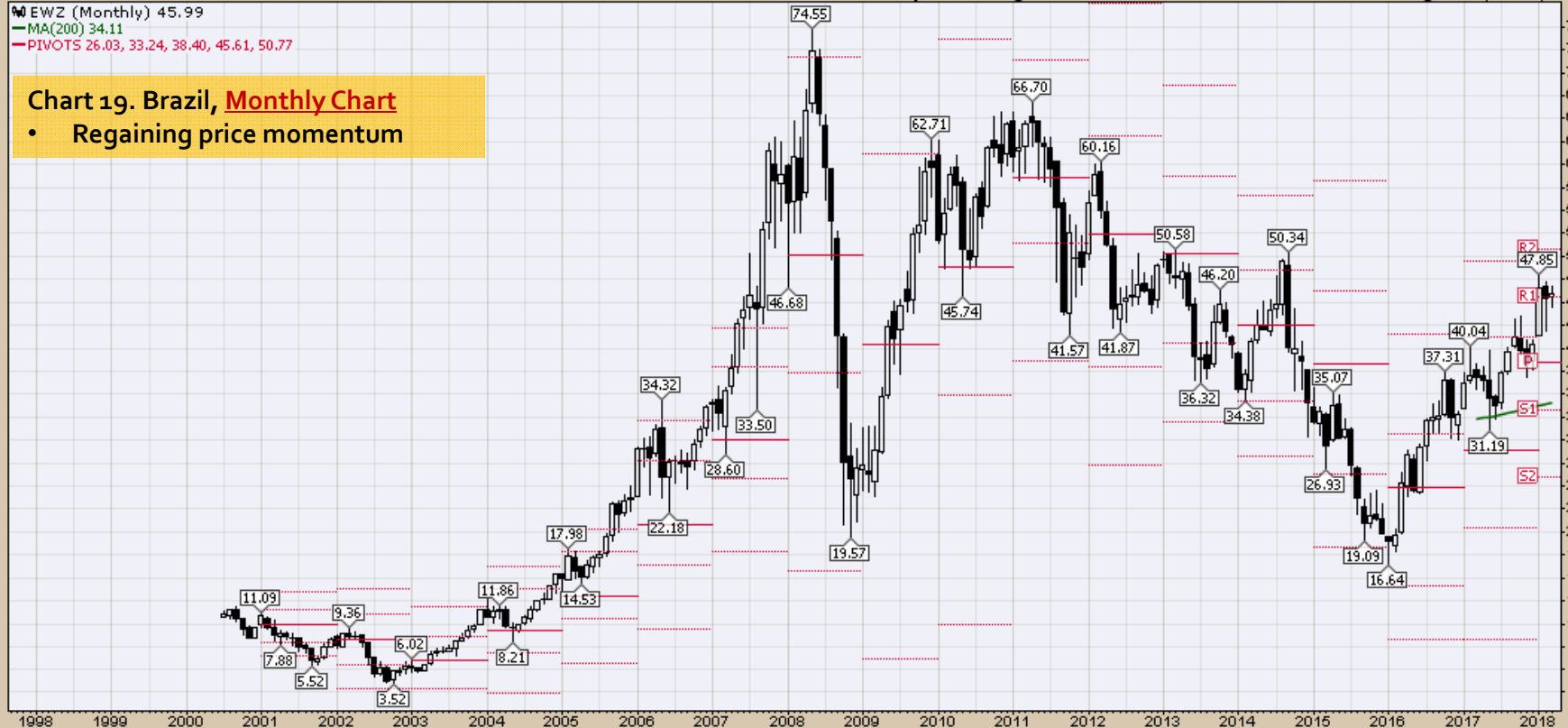
9-Mar-2018

Open 45.68 High 46.77 Low 44.49 Close 45.99 Volume 99.6M Chg +0.51 (+1.12%) ▲

EWZ (Monthly) 45.99
MA(200) 34.11
PIVOTS 26.03, 33.24, 38.40, 45.61, 50.77

Chart 19. Brazil, Monthly Chart

- Regaining price momentum



9-Mar-2018

Open 27.75 High 28.03 Low 27.15 Close 28.02 Volume 41.6M Chg +0.23 (+0.83%) ▲

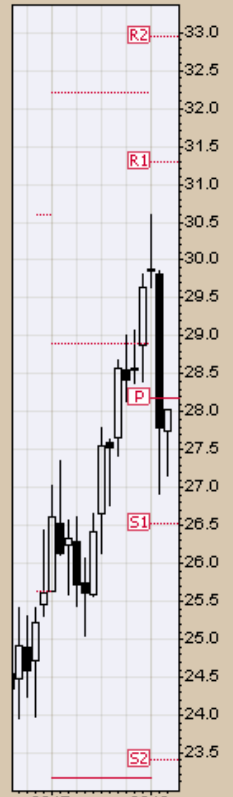
▲ EWC (Monthly) 28.02

— MA(200) 20.50

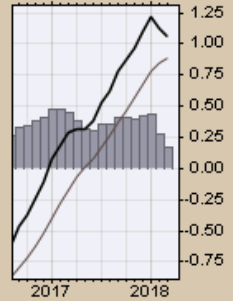
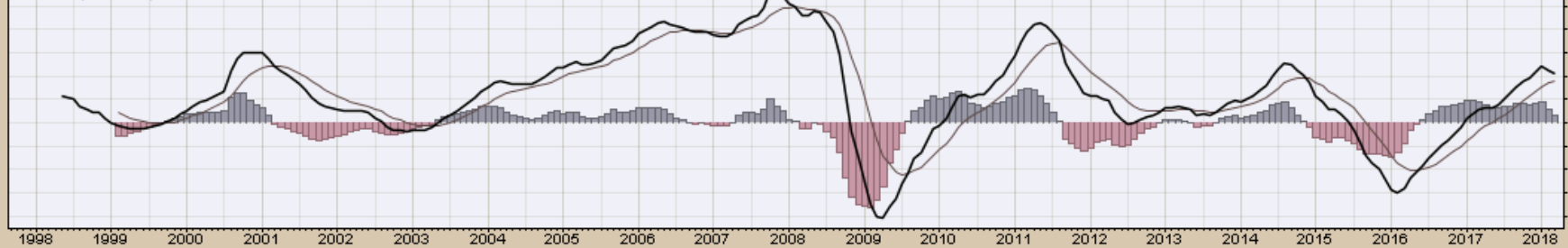
— PIVOTS 23.40, 26.52, 28.17, 31.29, 32.94

Chart 20. Canada, Monthly Chart

- Regaining price momentum



— MACD(12,26,9) 1.054, 0.889, 0.165



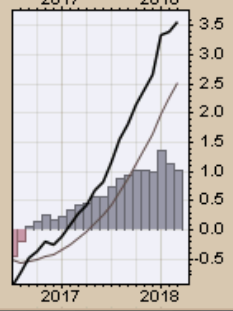
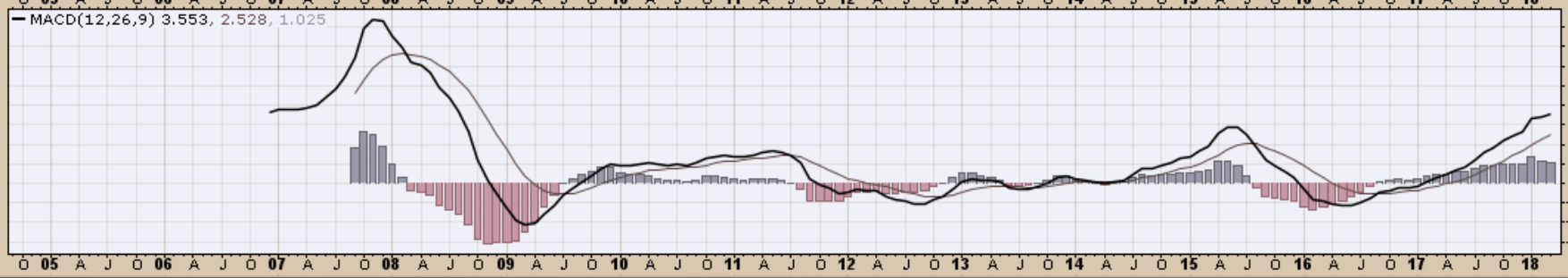
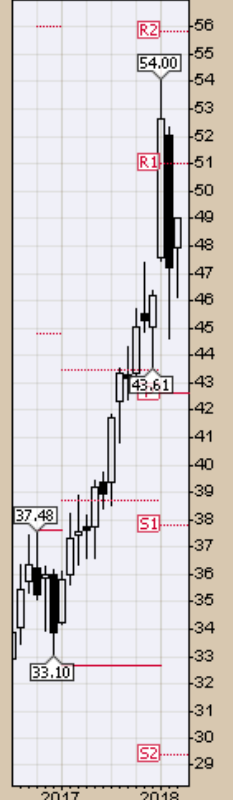
FXI iShares China Large-Cap ETF NYSE
9-Mar-2018

Open 47.96 High 49.05 Low 46.15 Close 49.01 Volume 174.4M Chg +1.79 (+3.79%)▲

© StockCharts.com

FXI (Monthly) 49.01
MA(200) undef
PIVOTS 29.39, 37.78, 42.60, 50.99, 55.81

Chart 21. China, Monthly Chart
• Regaining price momentum



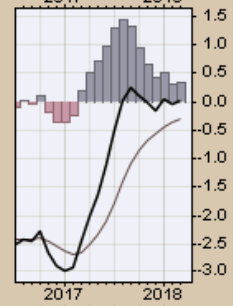
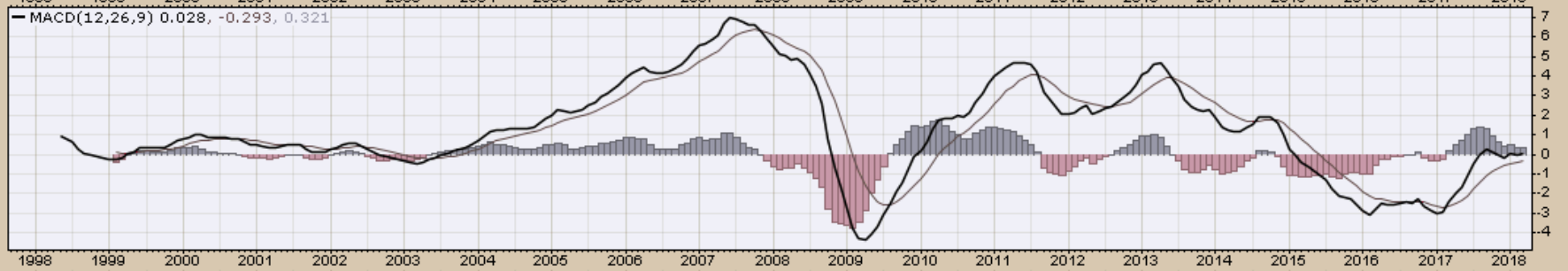
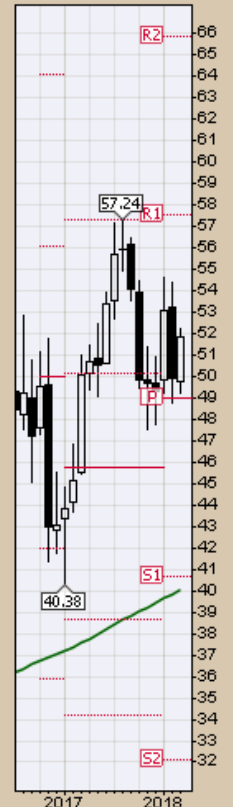
EW (Monthly) 51.87

MA(200) 40.05

PIVOTS 32.11, 40.70, 48.97, 57.56, 65.83

Chart 22. Mexico, Monthly Chart

- Regaining price momentum



EWJ iShares MSCI Japan ETF NYSE

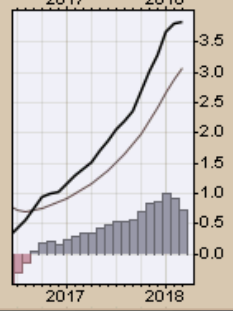
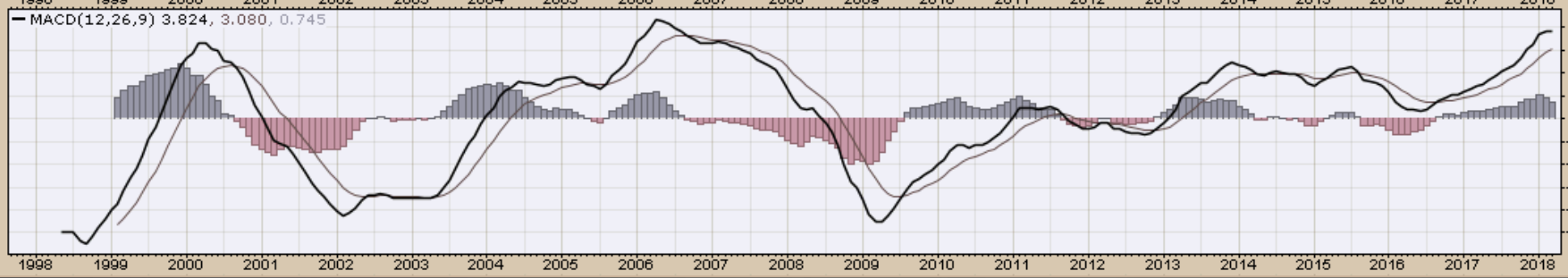
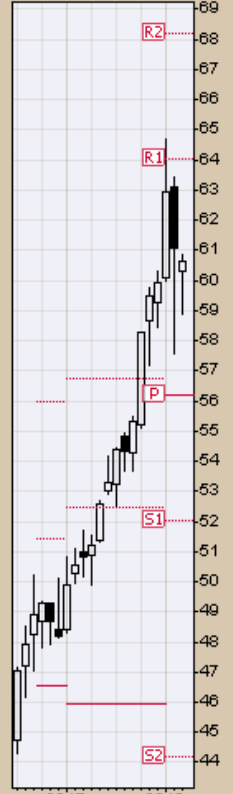
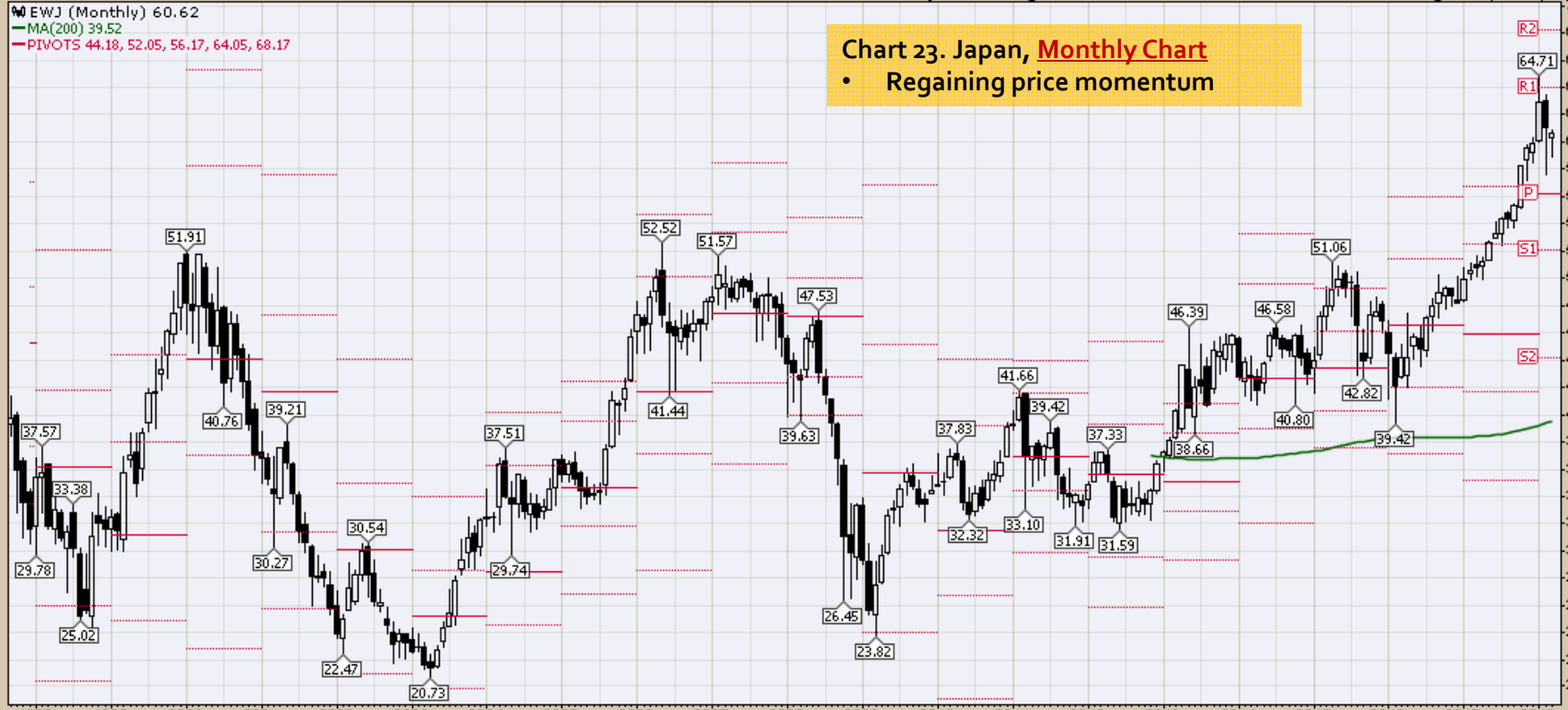
9-Mar-2018

© StockCharts.com

Open 60.30 High 60.87 Low 58.90 Close 60.62 Volume 99.8M Chg -0.45 (-0.74%)

EWJ (Monthly) 60.62
MA(200) 39.52
PIVOTS 44.18, 52.05, 56.17, 64.05, 68.17

Chart 23. Japan, **Monthly Chart**
• Regaining price momentum



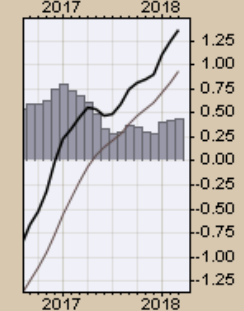
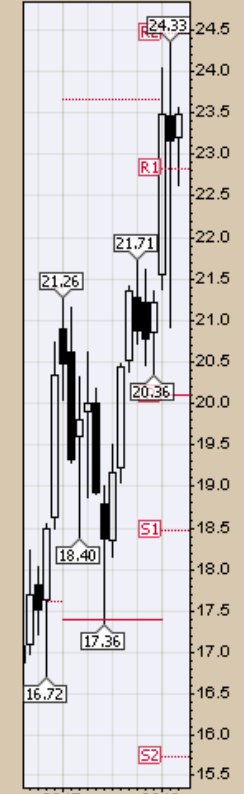
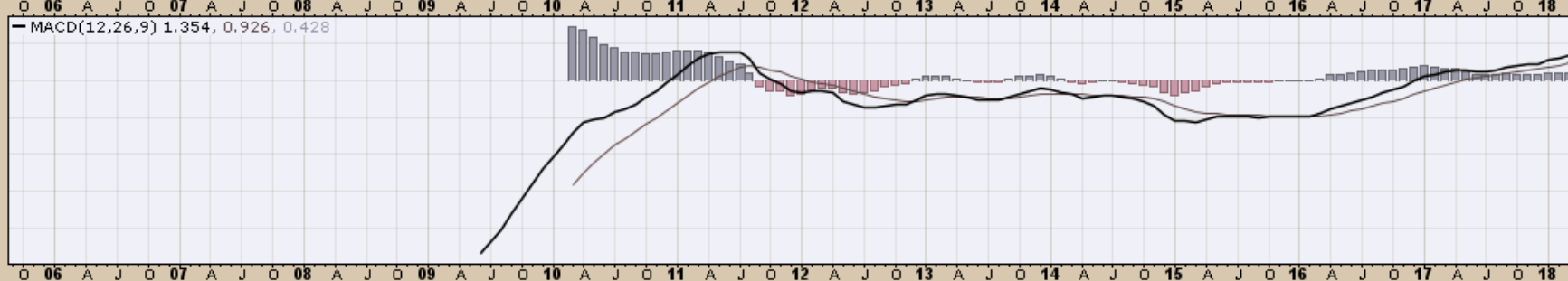
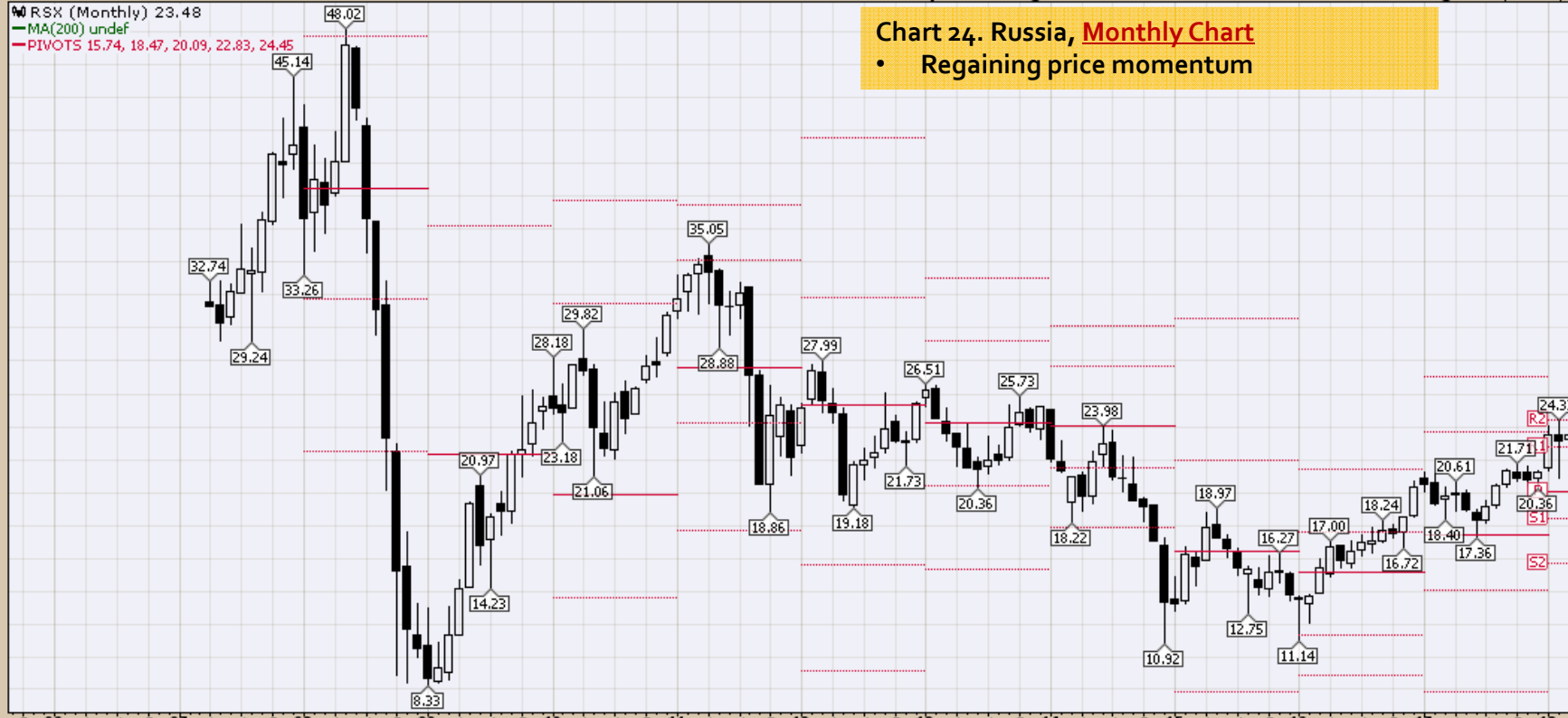
RSX (Monthly) 23.48

MA(200) undef

PIVOTS 15.74, 18.47, 20.09, 22.83, 24.45

Chart 24. Russia, Monthly Chart

- Regaining price momentum



INP iPath MSCI India Index ETN NYSE

9-Mar-2018

Open 84.18 High 84.56 Low 82.10 Close 84.06 Volume 24.9K Chg +0.48 (+0.57%) ▲

© StockCharts.com

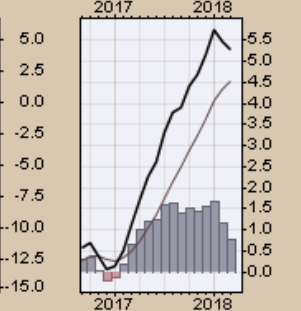
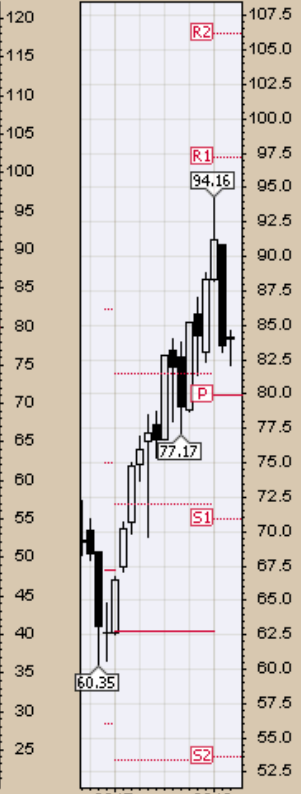
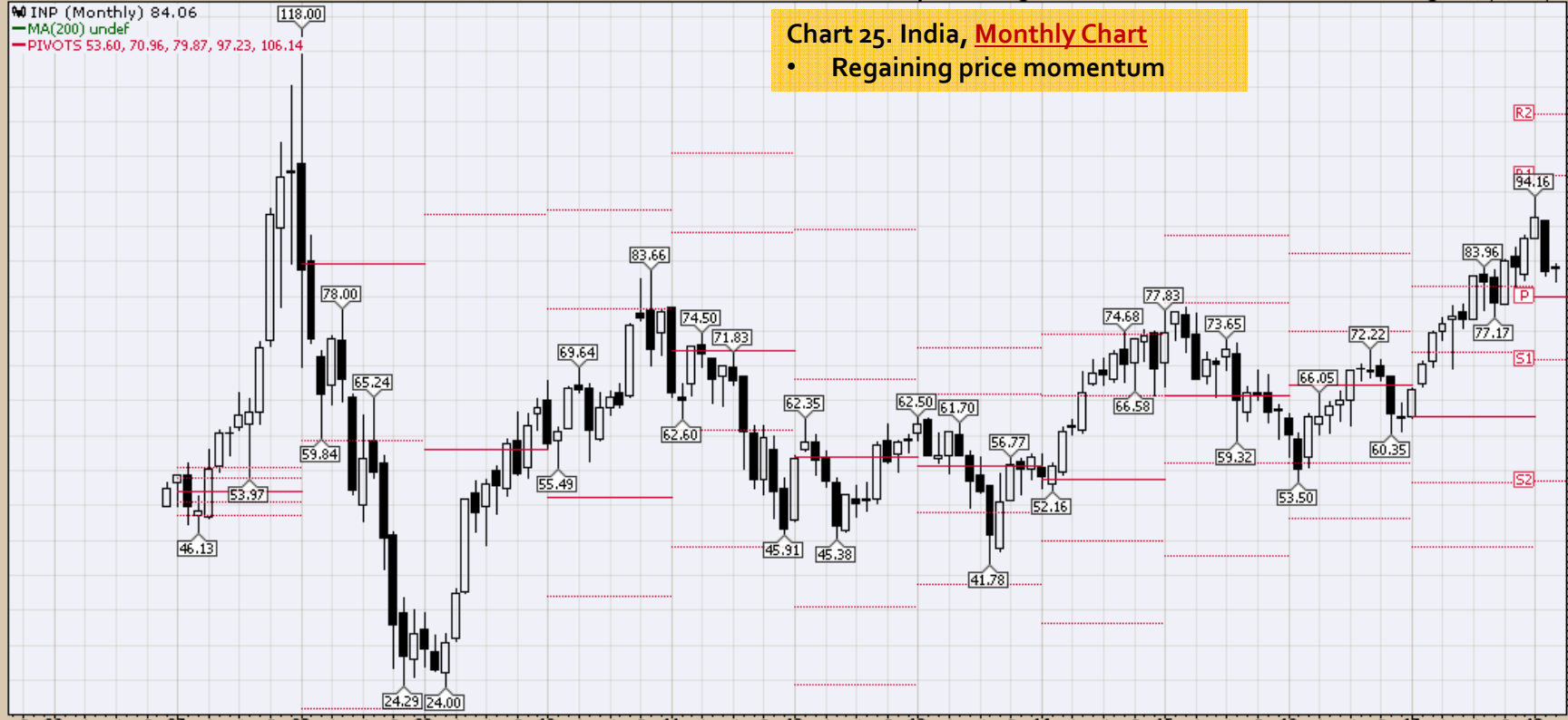
INP (Monthly) 84.06

MA(200) undef

PIVOTS 53.60, 70.96, 79.87, 97.23, 106.14

Chart 25. India, Monthly Chart

- Regaining price momentum



CRB Commodity Index
Weekly, Daily and Monthly Charts

\$CRB Reuters/Jefferies CRB Index (EOD) INDXX

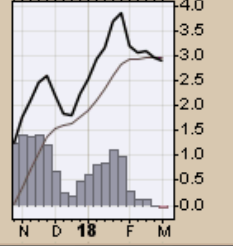
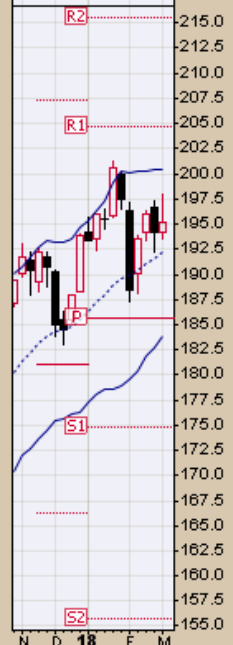
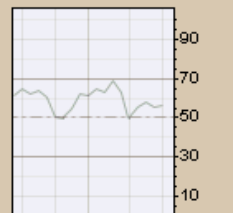
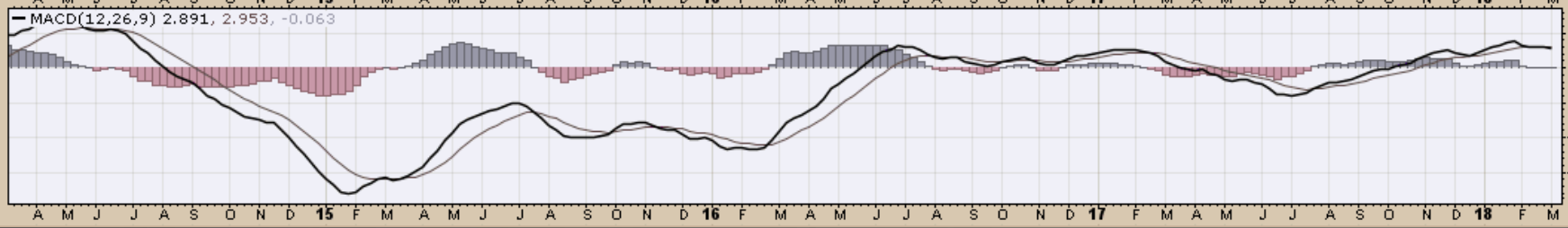
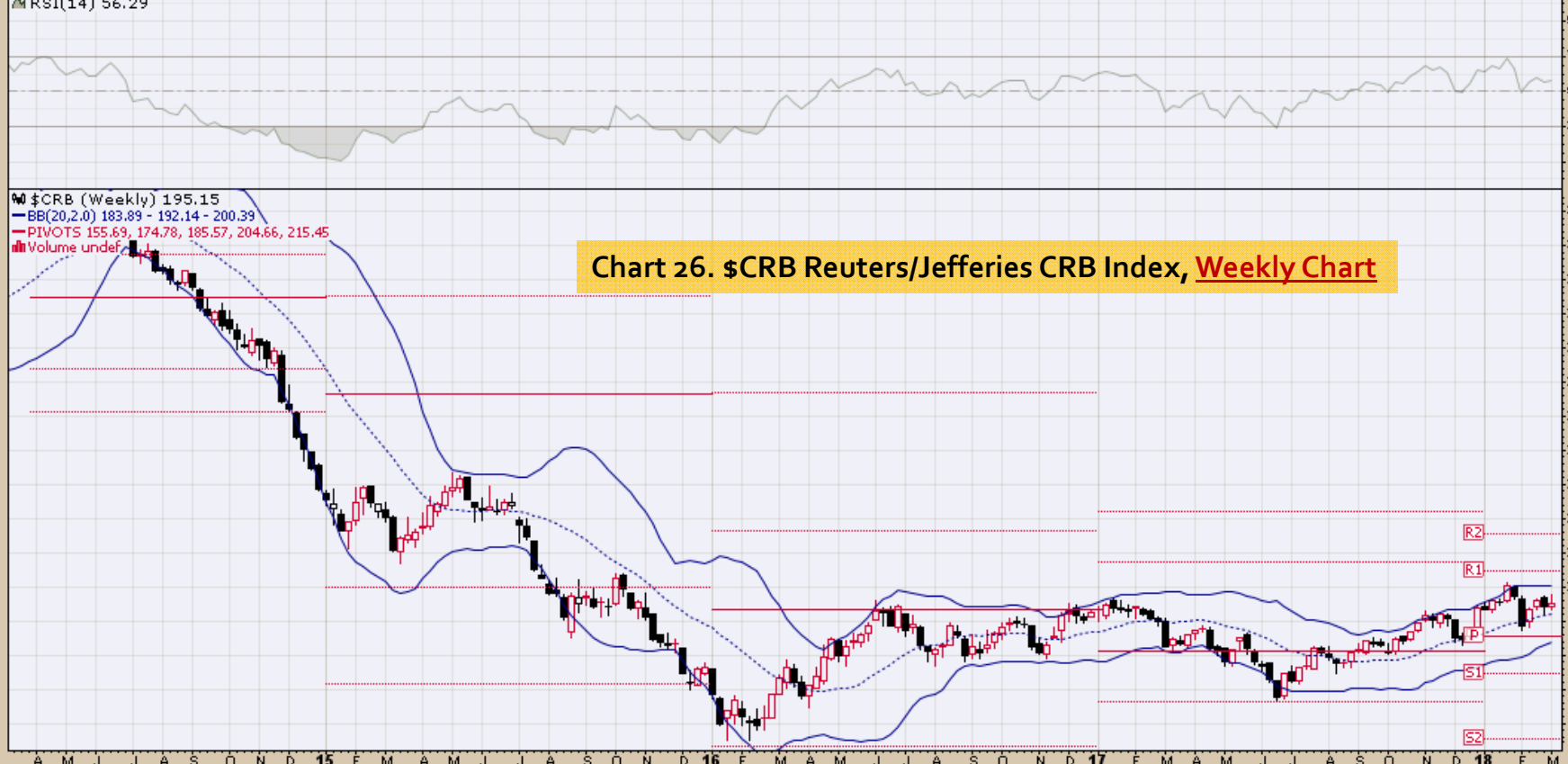
© StockCharts.com

9-Mar-2018 Open 194.15 High 197.92 Low 193.49 Close 195.15 Chg +1.03 (+0.53%) ▲

RSI(14) 56.29

\$CRB (Weekly) 195.15
BB(20,2,0) 183.89 - 192.14 - 200.39
PIVOTS 155.63, 174.78, 185.57, 204.66, 215.45
Volume undef

Chart 26. \$CRB Reuters/Jefferies CRB Index, Weekly Chart



\$CRB Reuters/Jefferies CRB Index (EOD) INDXX

9-Mar-2018

© StockCharts.com

Reuters/Jefferies CRB Index (EOD) (Daily) 195.15

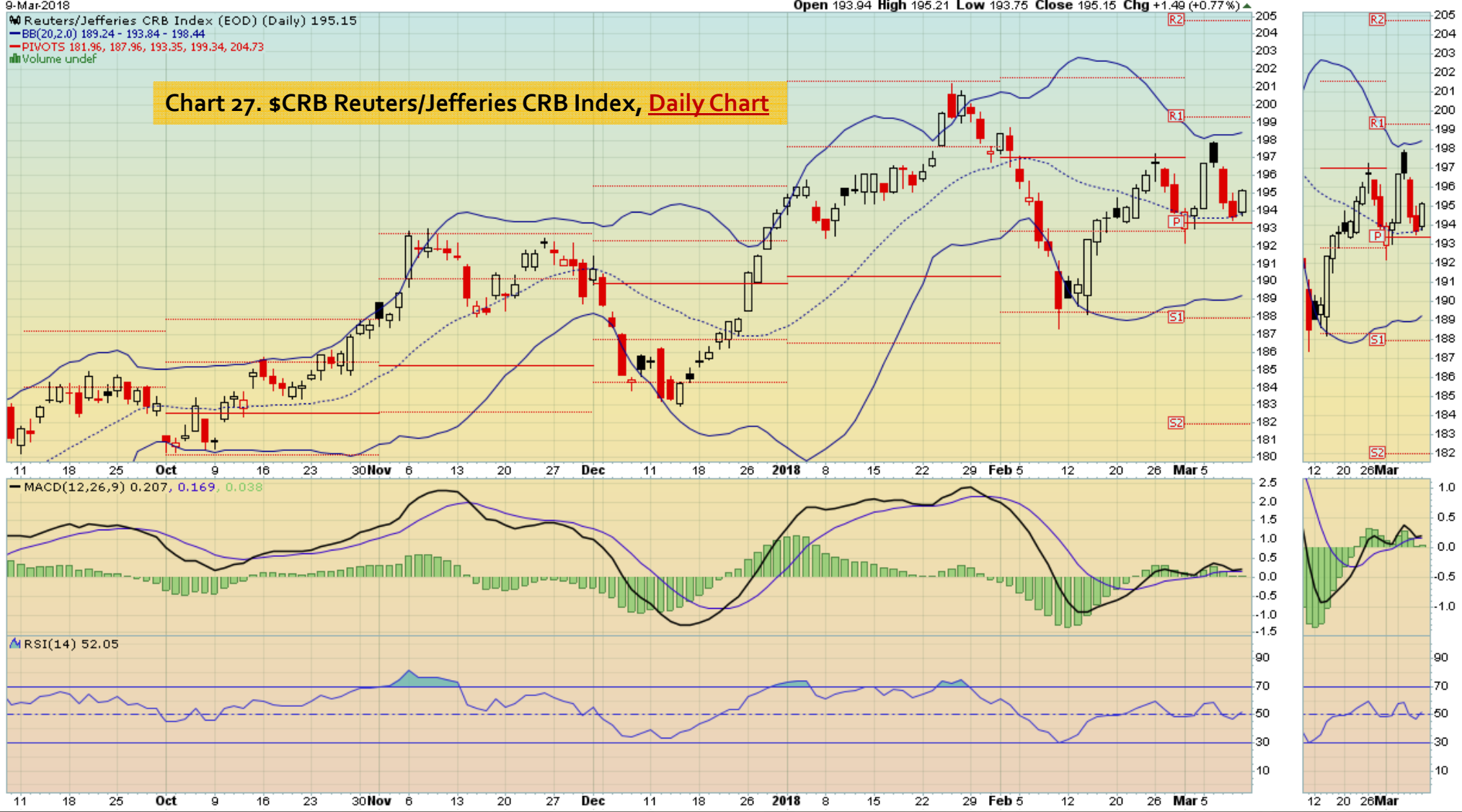
BB(20,2,0) 189.24 - 193.84 - 198.44

PIVOTS 181.96, 187.96, 193.35, 199.34, 204.73

Volume undef

Open 193.94 High 195.21 Low 193.75 Close 195.15 Chg +1.49 (+0.77%) ▲

Chart 27. \$CRB Reuters/Jefferies CRB Index, Daily Chart



\$CRB Reuters/Jefferies CRB Index (EOD) INDXX

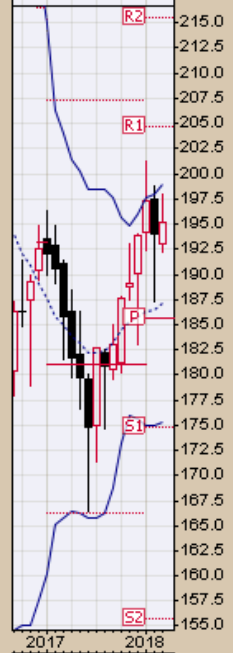
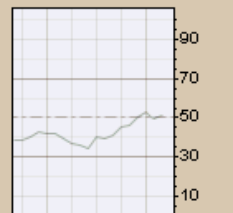
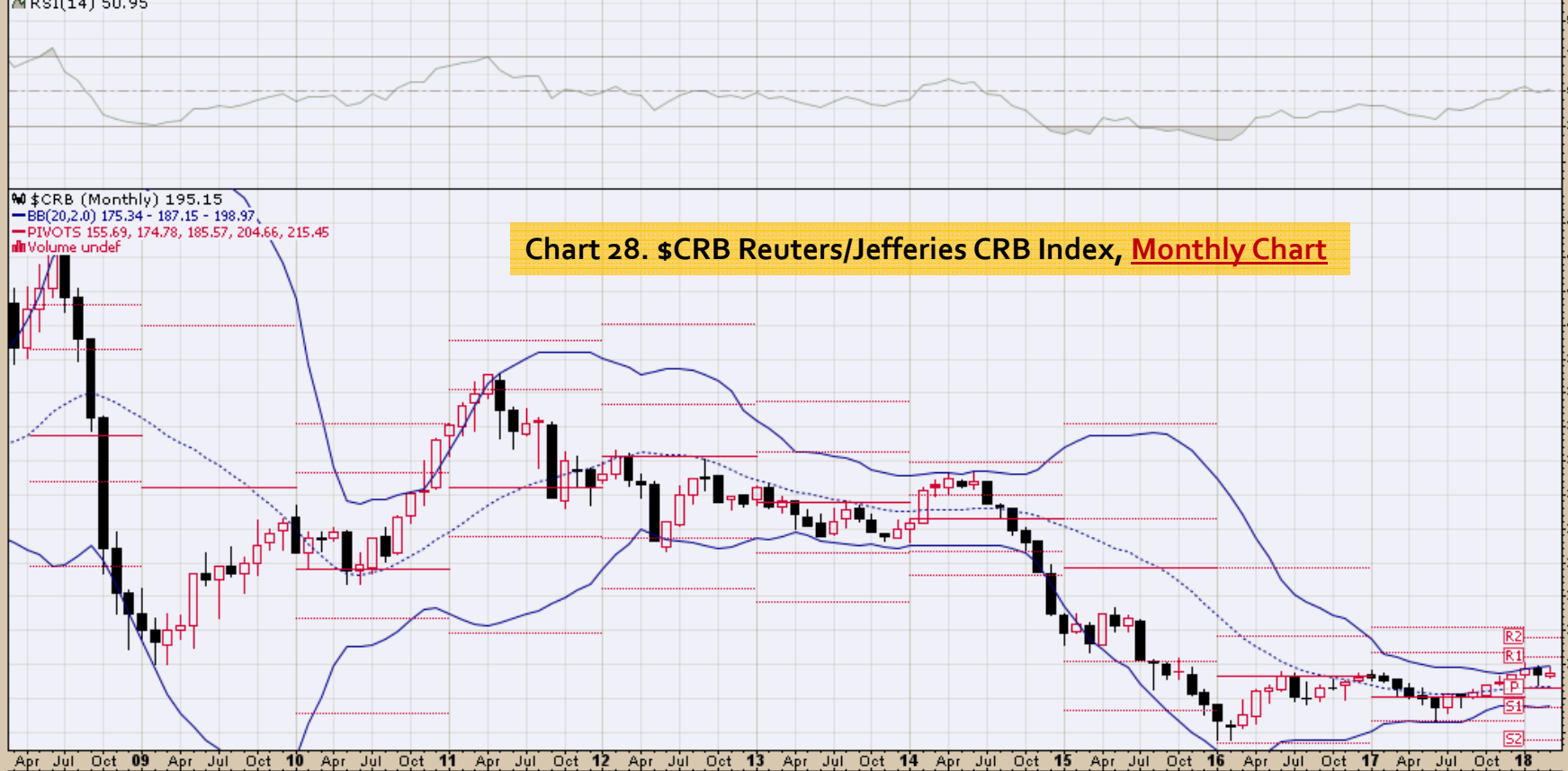
© StockCharts.com

9-Mar-2018 Open 192.97 High 197.92 Low 192.19 Close 195.15 Chg +1.20 (+0.62%) ▲

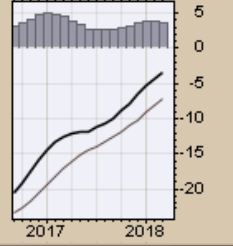
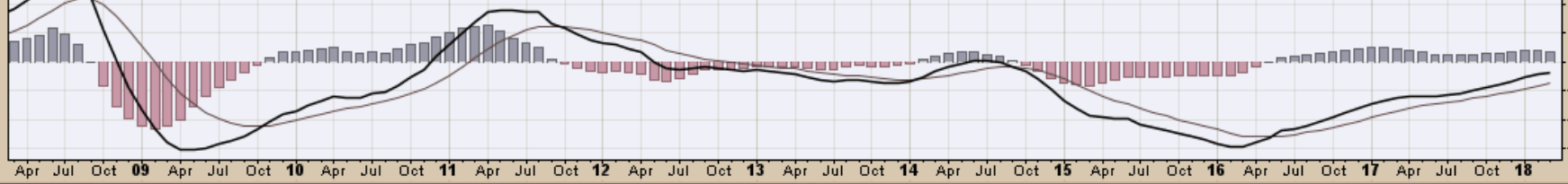
▲ RSI(14) 50.95

\$CRB (Monthly) 195.15
BB(20,2,0) 175.34 - 187.15 - 198.97
PIVOTS 155.63, 174.78, 185.57, 204.66, 215.45
Volume undef

Chart 28. \$CRB Reuters/Jefferies CRB Index, Monthly Chart



MACD(12,26,9) -3.521, -7.249, 3.728



\$WTIC Light Crude Oil
Weekly, Daily and Monthly Charts

\$WTIC Light Crude Oil - Continuous Contract (EOD) CME

9-Mar-2018

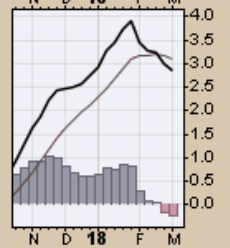
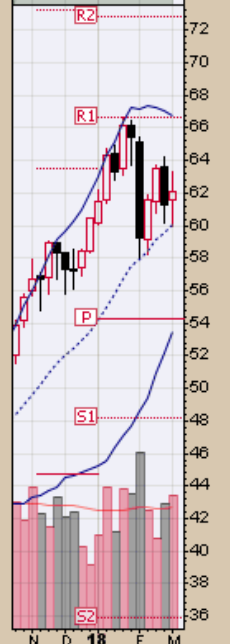
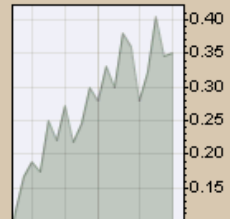
Open 61.55 High 63.28 Low 59.95 Close 62.04 Volume 3.4M Chg +0.79 (+1.29%) ▲

© StockCharts.com

▲ CMF(20) 0.351

● \$WTIC (Weekly) 62.04
— BB(20,2,0) 53.50 - 60.11 - 66.71
— PIVOTS 35.87, 48.14, 54.33, 66.60, 72.79
■ Volume 3.44M, EMA(50) 3.11M

Chart 29. \$WTIC, Weekly Chart



\$WTIC Light Crude Oil - Continuous Contract (EOD) CME

9-Mar-2018

Open 60.27 High 62.18 Low 60.14 Close 62.04 Volume 644.1K Chg +1.92 (+3.19%) ▲

© StockCharts.com

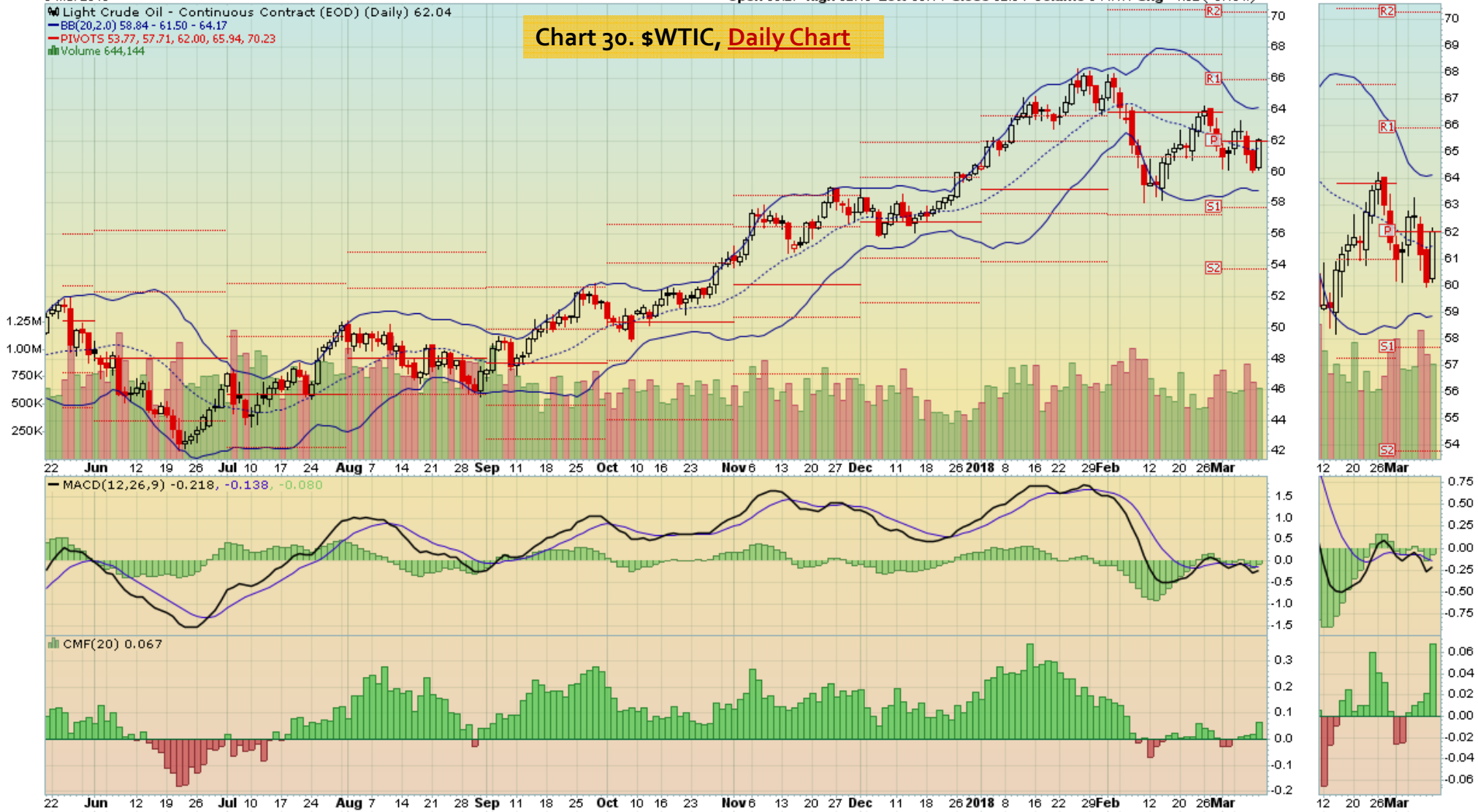
Light Crude Oil - Continuous Contract (EOD) (Daily) 62.04

BB(20,2.0) 58.84 - 61.50 - 64.17

PIVOTS 53.77, 57.71, 62.00, 65.94, 70.23

Volume 644,144

Chart 30. \$WTIC, Daily Chart



\$WTIC Light Crude Oil - Continuous Contract (EOD) CME

© StockCharts.com

9-Mar-2018

Open 61.55 High 63.28 Low 59.95 Close 62.04 Volume 4.9M Chg +0.40 (+0.65%)

CMF(20) 0.243 (28 Feb)

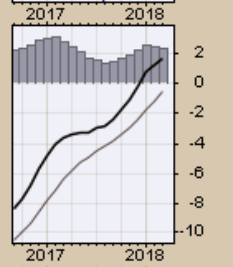
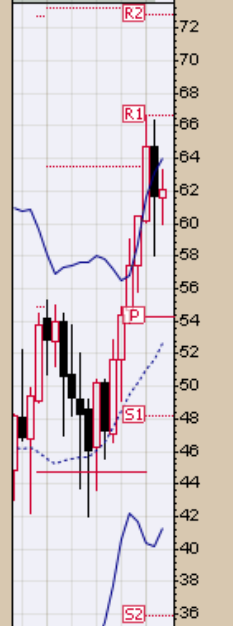
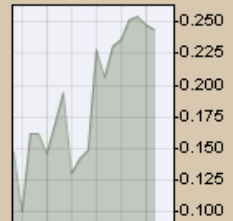
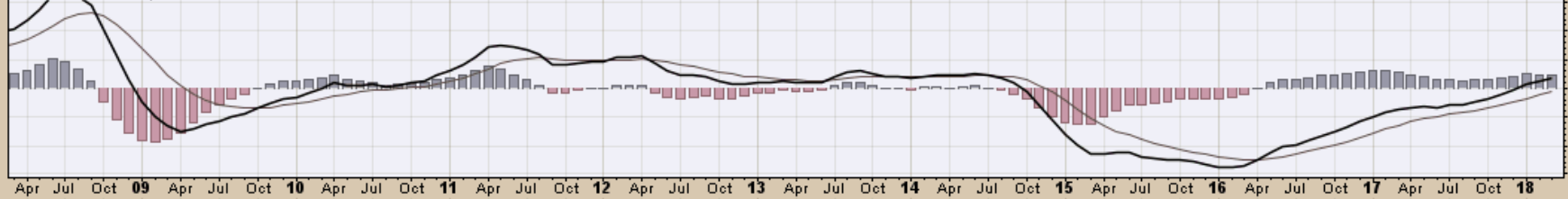


\$WTIC (Monthly) 62.04
BB(20,2,0) 41.33 - 52.69 - 64.04
PIVOTS 35.87, 48.14, 54.33, 66.60, 72.79

Chart 31. \$WTIC, Monthly Chart



MACD(12,26,9) 1.678, -0.601, 2.280



Soybeans
Weekly, Daily and Monthly Charts

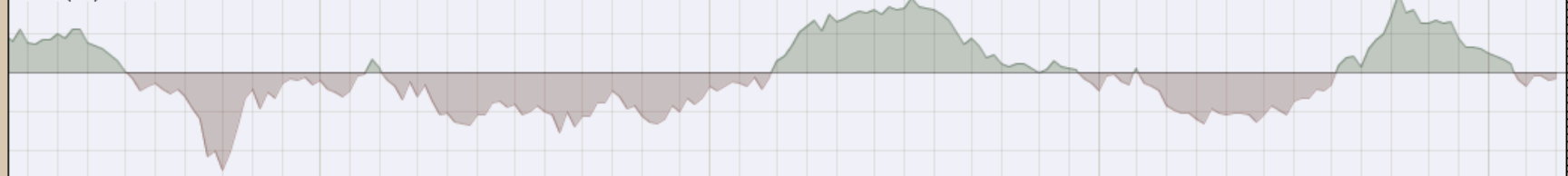
\$SOYB Soybeans - Continuous Contract (EOD) CME

© StockCharts.com

9-Mar-2018

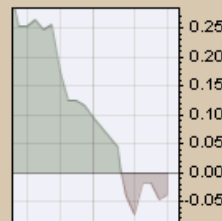
Open 1074.25 High 1079.25 Low 1036.50 Close 1039.25 Volume 582.9K Chg -31.75 (-2.96%)

CMF(20) -0.038

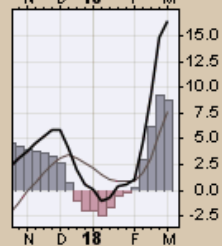
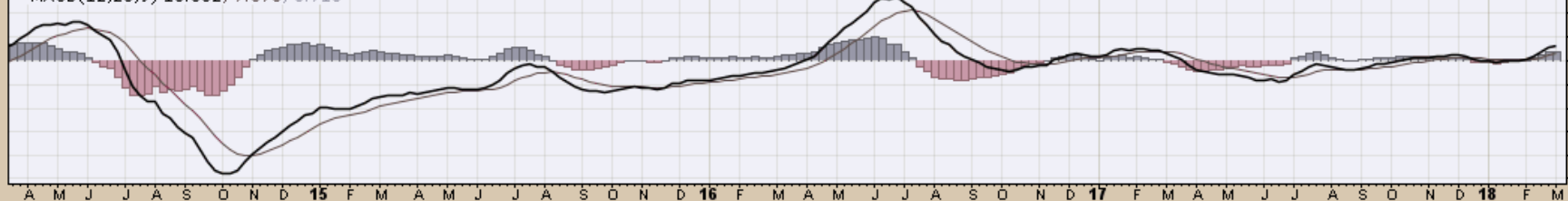


\$SOYB (Weekly) 1039.25
BB(20,2,0) 934.29 - 992.61 - 1050.94
PIVOTS 800.92, 881.33, 980.67, 1061.08, 1160.42

Chart 32. Soybeans, Weekly Chart



MACD(12,26,9) 16.382, 7.673, 8.710



\$SOYB Soybeans - Continuous Contract (EOD) CME

9-Mar-2018

Open 1063.00 High 1065.00 Low 1036.50 Close 1039.25 Volume 118.9K Chg -24.75 (-2.33%)

© StockCharts.com

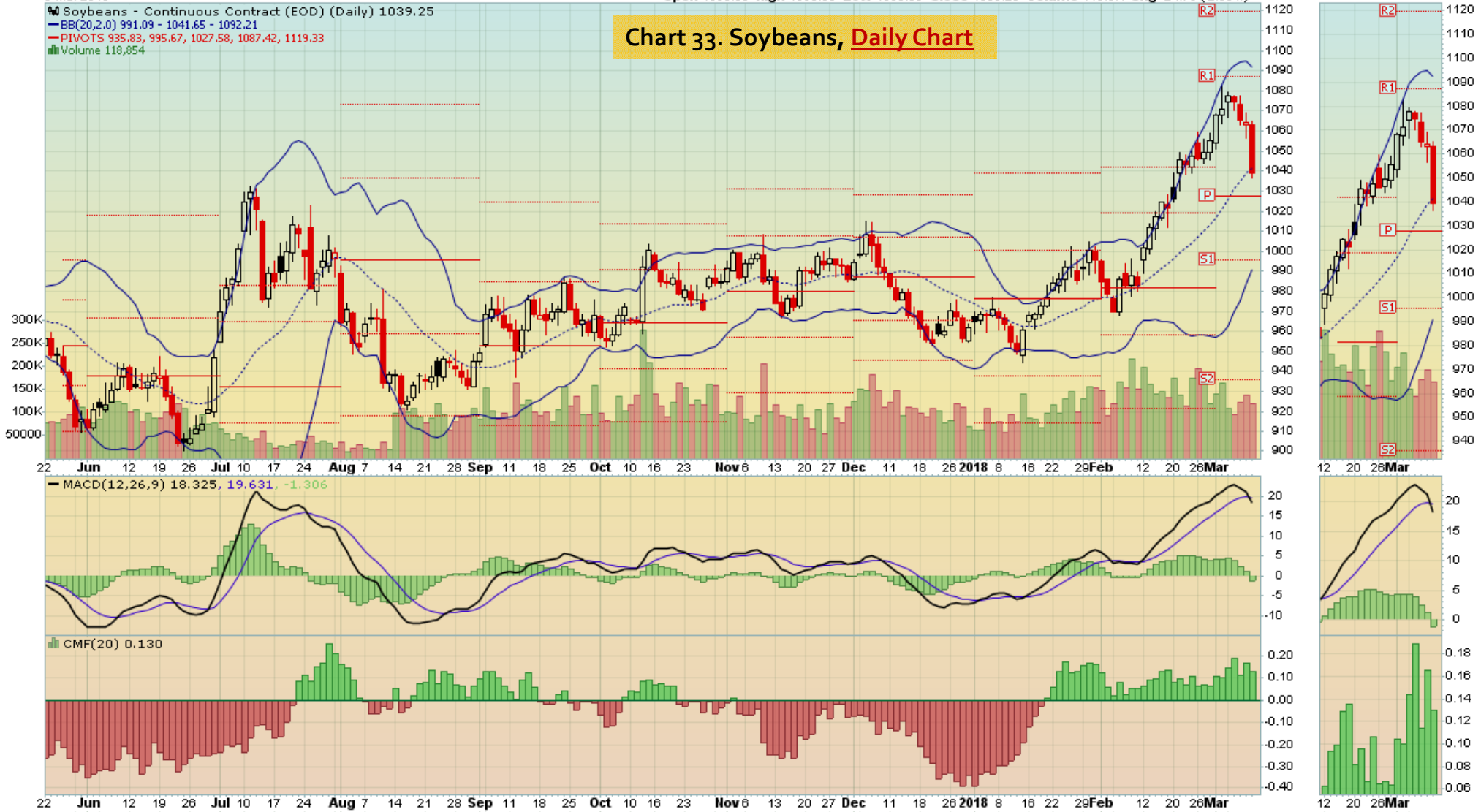
W Soybeans - Continuous Contract (EOD) (Daily) 1039.25

BB(20,2.0) 991.09 - 1041.65 - 1092.21

PIVOTS 935.83, 995.67, 1027.58, 1087.42, 1119.33

Volume 118,854

Chart 33. Soybeans, Daily Chart



\$SOYB Soybeans - Continuous Contract (EOD) CME

© StockCharts.com

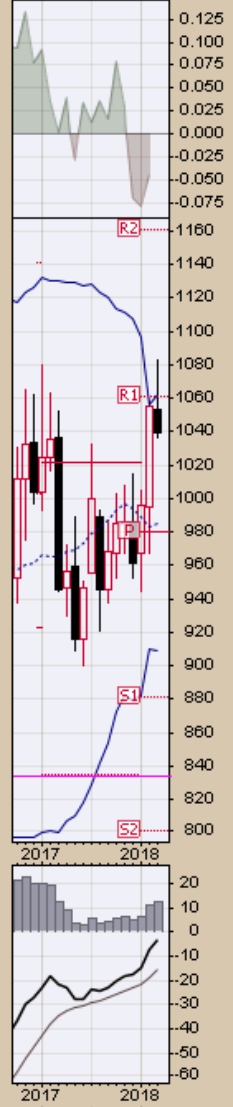
9-Mar-2018

Open 1053.75 High 1082.50 Low 1036.50 Close 1039.25 Volume 899.0K Chg -16.25 (-1.54%)

▲ CMF(20) -0.044 (28 Feb)

● \$SOYB (Monthly) 1039.25
— BB(20,2,0) 908.68 - 985.31 - 1061.94
— PIVOTS 800.92, 881.33, 980.67, 1061.08, 1160.42

Chart 34. Soybeans, Monthly Chart



Corn
Weekly, Daily and Monthly Charts

\$CORN Corn - Continuous Contract (EOD) CME
9-Mar-2018

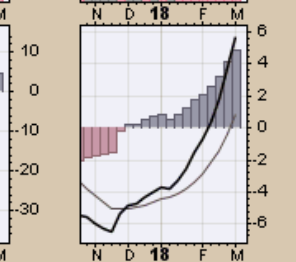
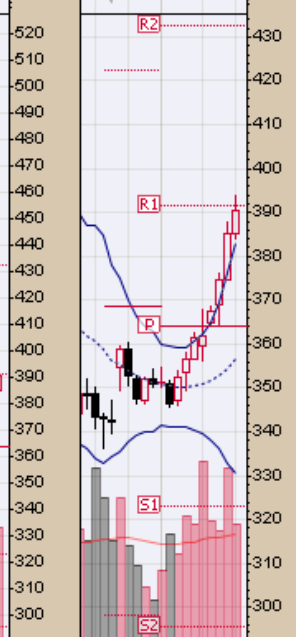
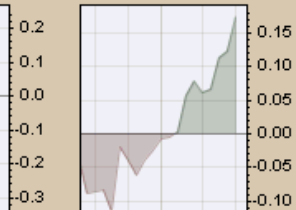
© StockCharts.com

Open 385.00 High 393.75 Low 384.00 Close 390.50 Volume 943.7K Chg +5.25 (+1.36%)▲

▲ CMF(20) 0.173

📉 \$CORN (Weekly) 390.50
— BB(20,2.0) 330.43 - 356.76 - 383.09
— PIVOTS 295.42, 323.08, 363.92, 391.58, 432.42
■ Volume 943.75K, EMA(50) 853.86K

Chart 35. Corn, Weekly Chart



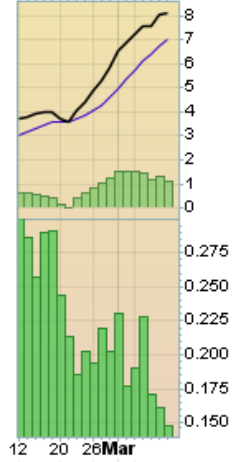
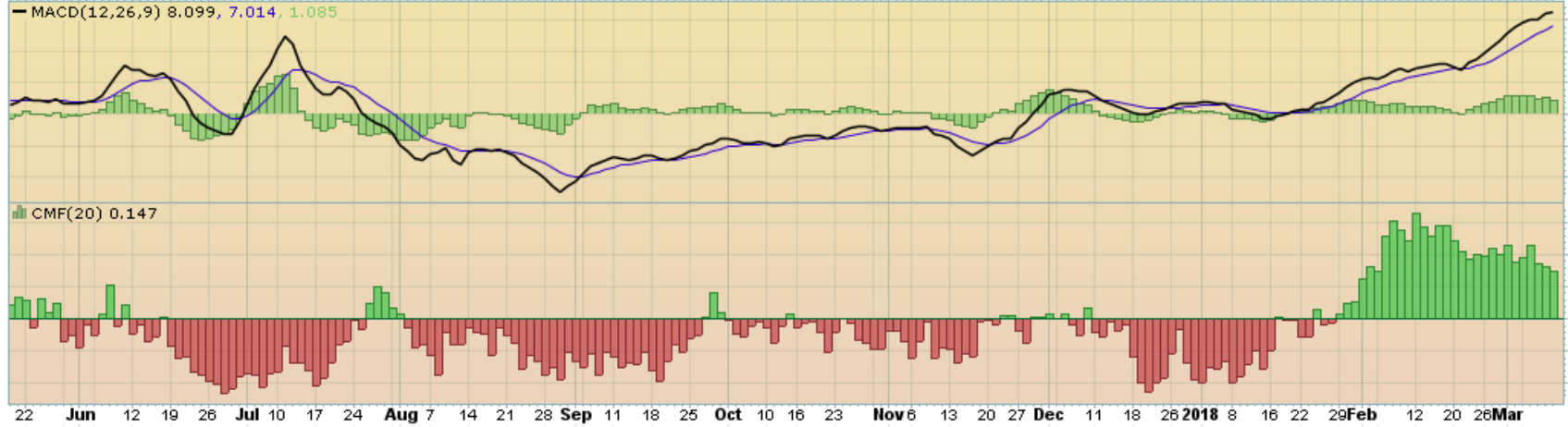
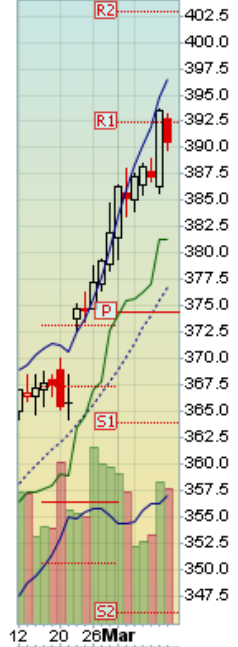
\$CORN Corn - Continuous Contract (EOD) CME
9-Mar-2018

Open 392.75 High 393.25 Low 389.75 Close 390.50 Volume 243.4K Chg -3.00 (-0.76%)

© StockCharts.com

■ Corn - Continuous Contract (EOD) (Daily) 390.50
— BB(20,2,0) 357.05 - 376.77 - 396.50
— PIVOTS 345.83, 363.92, 374.33, 392.42, 402.83
— CHANDLR(22,3,0) 381.30
■ Volume 243,402

Chart 36. Corn, Daily Chart



\$CORN Corn - Continuous Contract (EOD) CME

© StockCharts.com

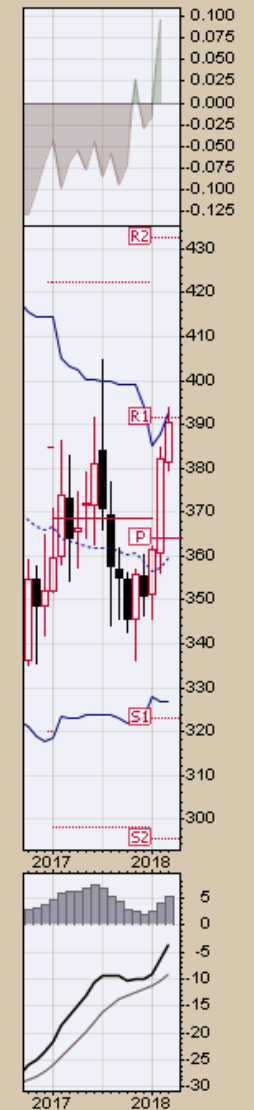
9-Mar-2018

Open 381.50 High 393.75 Low 379.50 Close 390.50 Volume 1.5M Chg +8.50 (+2.23%)

▲ CMF(20) 0.095 (28 Feb)

● \$CORN (Monthly) 390.50
— BB(20,2,0) 326.74 - 359.74 - 392.73
— PIVOTS 295.42, 323.08, 363.92, 391.58, 432.42

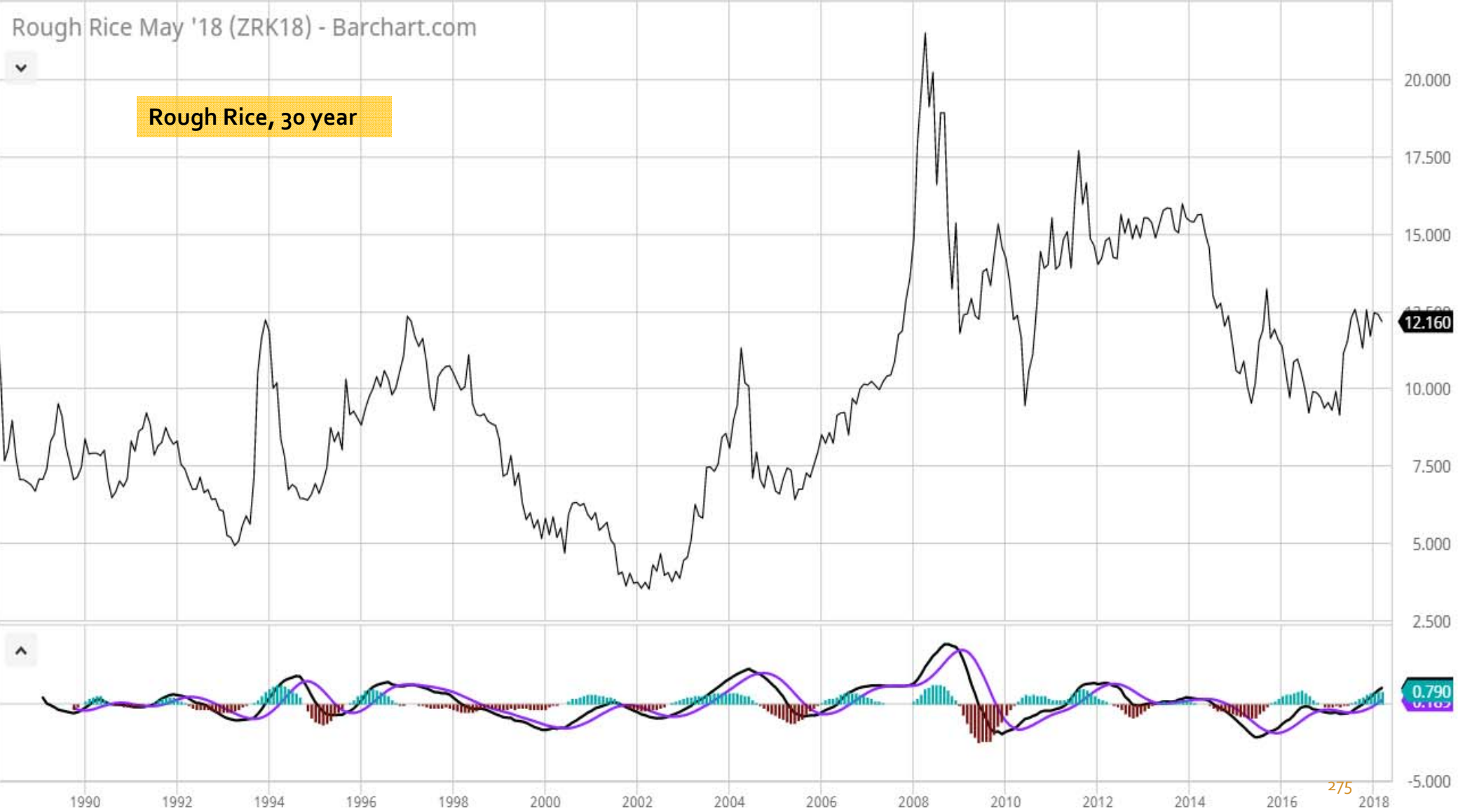
Chart 37. Corn, **Monthly Chart**



Rice
Quarterly and Daily Charts

Rough Rice May '18 (ZRK18) - Barchart.com

Rough Rice, 30 year



275

Rough Rice May '18 (ZRK18) - Barchart.com

Chart 38. Rough Rice
Weekly Chart, 5 year



Rough Rice May '18 (ZRK18) - Barchart.com



Chart 39. Rough Rice
Daily Chart, 1 year

13.500
13.000
12.500
12.330
12.000
11.500
11.000
10.500
10.000
0.500
0.085
-0.168
-0.500



Apr '17 May '17 Jun '17 Jul '17 Aug '17 Sep '17 Oct '17 Nov '17 Dec '17 Jan '18 Feb '18 Mar '18

Cotton
Weekly, Daily and Monthly Charts

\$COTTON Cotton - Continuous Contract (EOD) ICE

9-Mar-2018

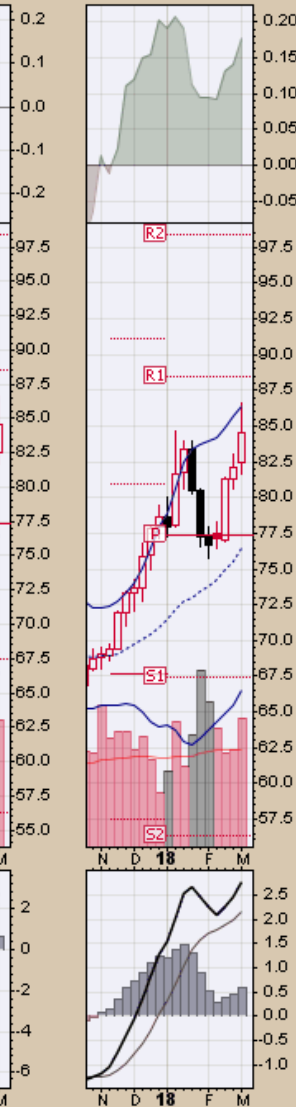
Open 82.50 High 86.80 Low 81.71 Close 84.52 Volume 125.5K Chg +2.43 (+2.96%) ▲

© StockCharts.com

▲ CMF(20) 0.177

Chart 40. Cotton, Weekly Chart

📉 \$COTTON (Weekly) 84.52
— BB(20,2,0) 66.52 - 76.47 - 86.41
— PIVOTS 56.29, 67.46, 77.32, 88.49, 98.35
■ Volume 125.55K, EMA(50) 95.66K



\$COTTON Cotton - Continuous Contract (EOD) ICE

9-Mar-2018

Open 84.94 High 85.55 Low 84.23 Close 84.52 Volume 15.2K Chg -0.60 (-0.70%)

© StockCharts.com

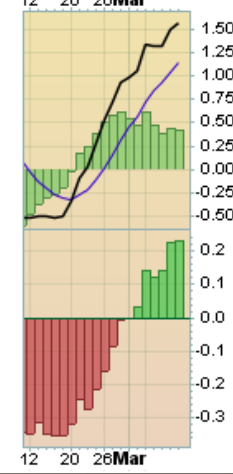
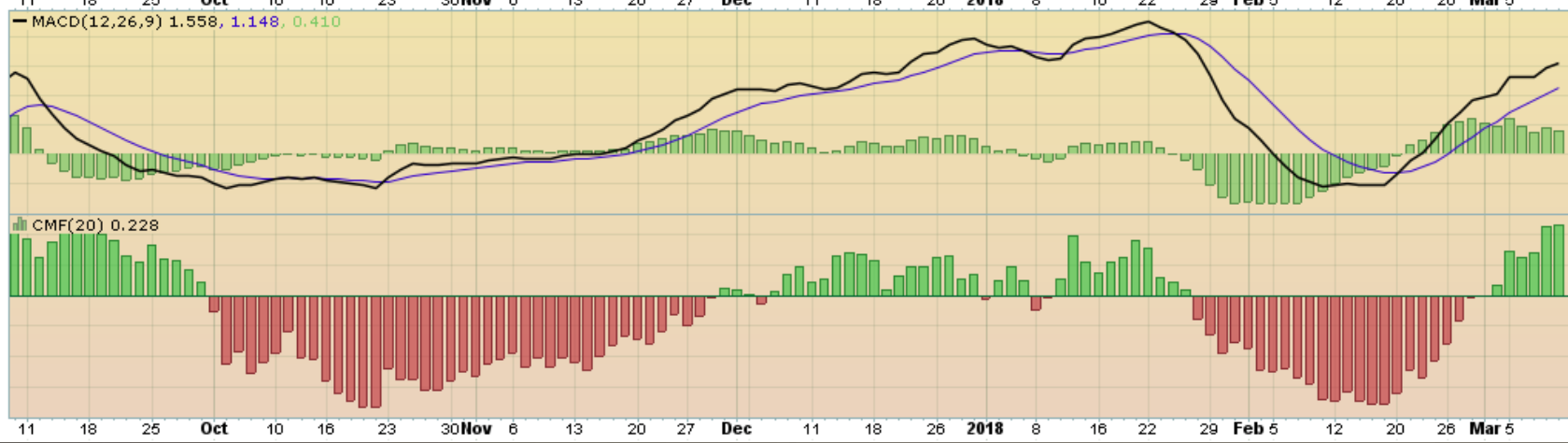
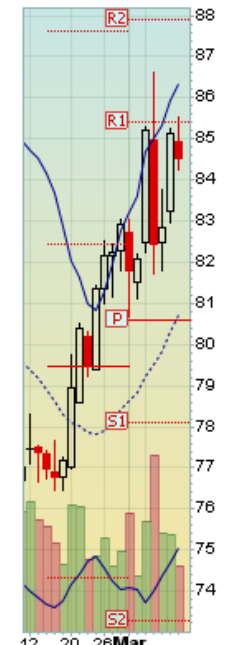
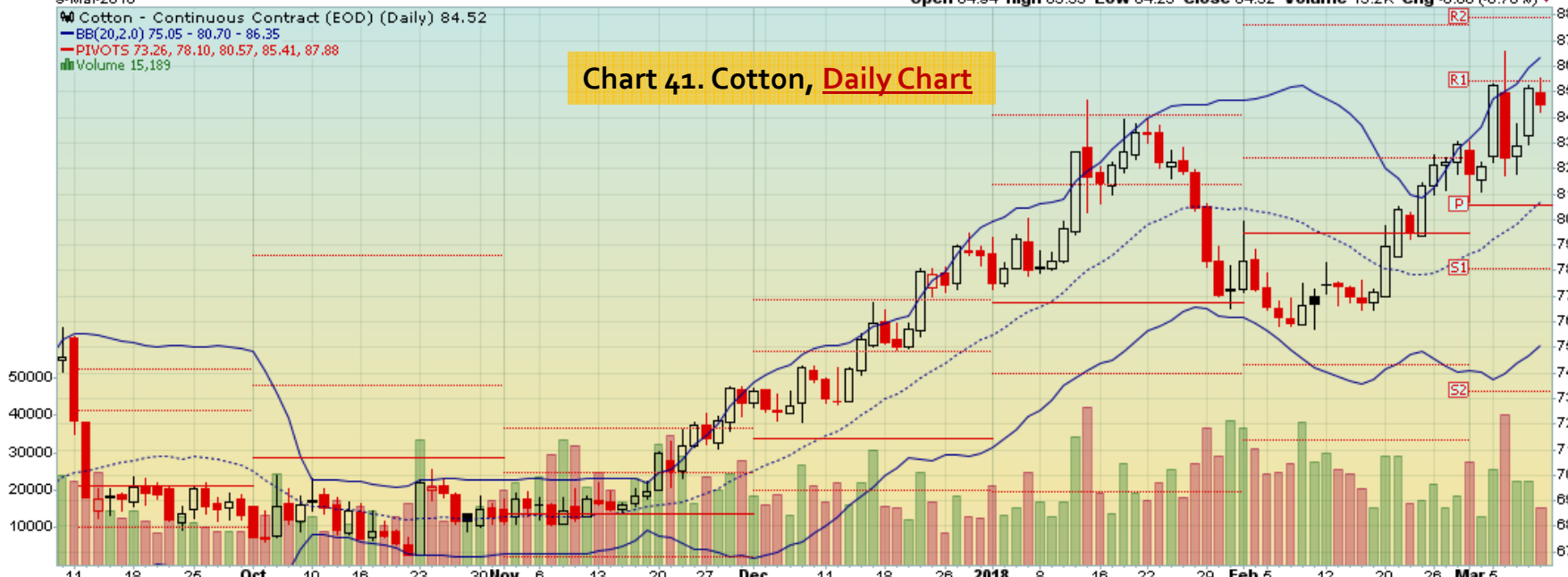
☒ Cotton - Continuous Contract (EOD) (Daily) 84.52

— BB(20,2.0) 75.05 - 80.70 - 86.35

— PIVOTS 73.26, 78.10, 80.57, 85.41, 87.88

■ Volume 15,189

Chart 41. Cotton, Daily Chart



\$COTTON Cotton - Continuous Contract (EOD) ICE

© StockCharts.com

9-Mar-2018

Open 82.71 High 86.60 Low 80.67 Close 84.52 Volume 165.6K Chg +1.59 (+1.92%)

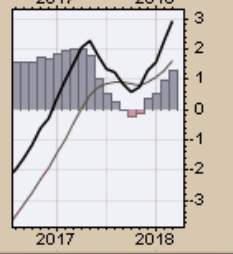
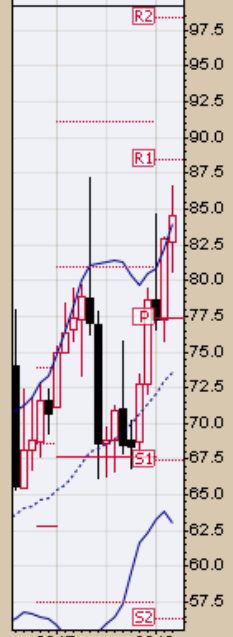
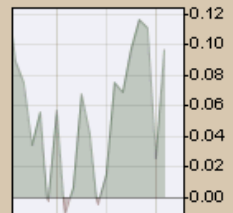
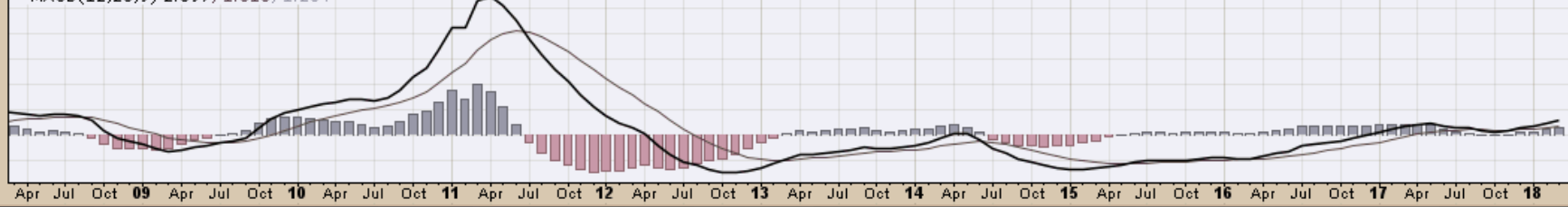
▲ CMF(20) 0.097 (28 Feb)

☞ \$COTTON (Monthly) 84.52
— BB(20,2,0) 63.07 - 73.53 - 83.98
— PIVOTS 56.29, 67.46, 77.32, 88.49, 98.35

Chart 42. Cotton, Monthly Chart



— MACD(12,26,9) 2.897, 1.613, 1.284



Wheat
Weekly, Daily and Monthly Charts

\$WHEAT Wheat - Continuous Contract (EOD) CME

9-Mar-2018

Open 506.50 High 510.25 Low 486.00 Close 489.25 Volume 394.2K Chg -10.75 (-2.15%)

© StockCharts.com

▲ CMF(20) 0.060

W \$WHEAT (Weekly) 489.25
BB(20,2,0) 395.61 - 439.80 - 483.99
PIVOTS 299.00, 363.00, 468.75, 532.75, 638.50
Volume 394.20K, EMA(50) 357.69K

Chart 43. Wheat, Weekly Chart



\$WHEAT Wheat - Continuous Contract (EOD) CME

9-Mar-2018

Open 499.50 High 499.50 Low 486.00 Close 489.25 Volume 67.9K Chg -10.00 (-2.00%)

© StockCharts.com

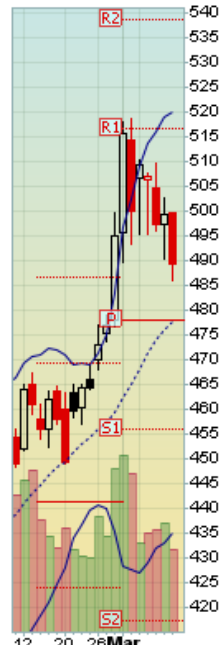
Wheat - Continuous Contract (EOD) (Daily) 489.25

BB(20,2,0) 434.96 - 477.42 - 519.89

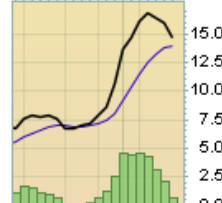
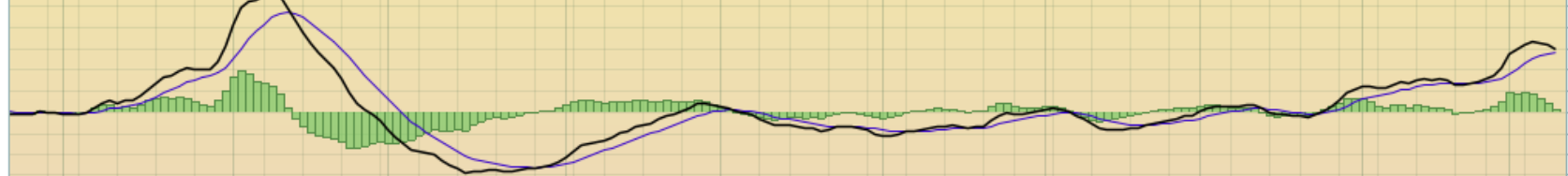
PIVOTS 417.00, 456.00, 477.75, 516.75, 538.50

Volume 67,855

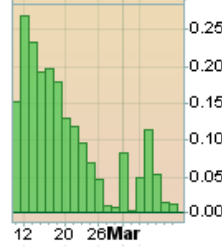
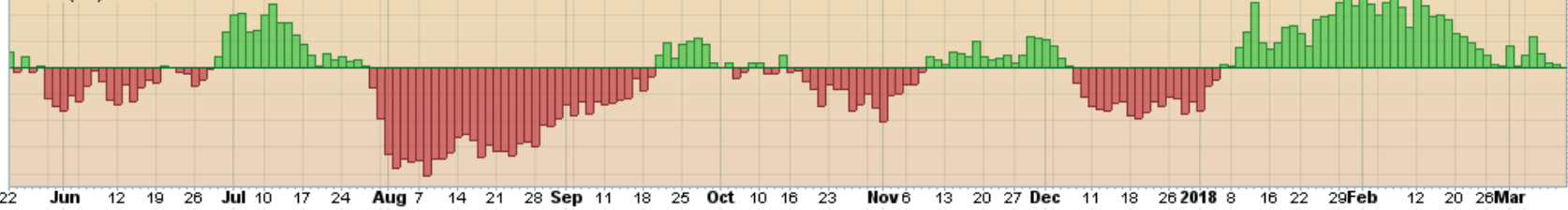
Chart 44. Wheat, **Daily Chart**



MACD(12,26,9) 14.702, 13.974, 0.728



CMF(20) 0.014



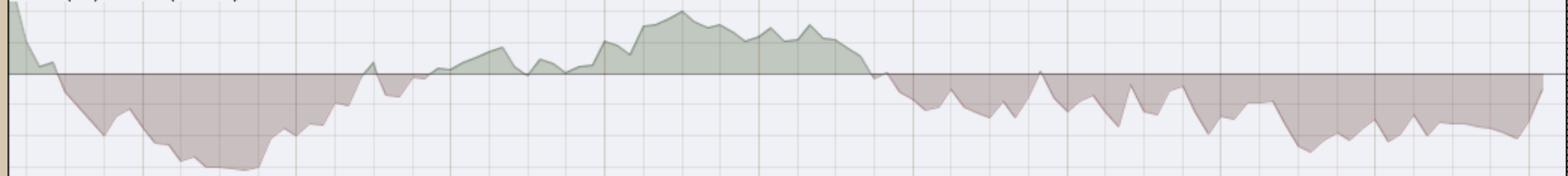
\$WHEAT Wheat - Continuous Contract (EOD) CME

9-Mar-2018

Open 495.50 High 518.50 Low 486.00 Close 489.25 Volume 668.8K Chg -5.75 (-1.16%)

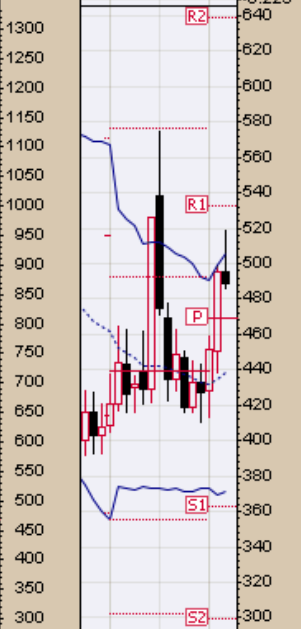
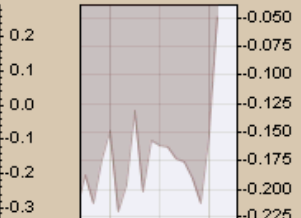
© StockCharts.com

▲ CMF(20) -0.049 (28 Feb)

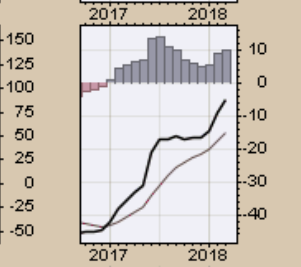
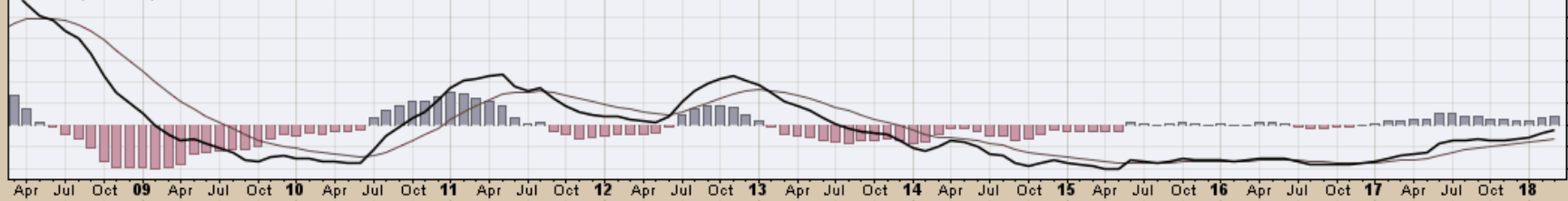


☞ \$WHEAT (Monthly) 489.25
— BB(20,2,0) 370.93 - 438.38 - 505.82
— PIVOTS 299.00, 363.00, 468.75, 532.75, 638.50

Chart 45. Wheat, Monthly Chart



— MACD(12,26,9) -5.341, -15.355, 10.014



S&P Sectors

Chart Book Index

Market Price Considerations for Week Beginning March 12, 2018

Chart Book Index - Sectors

- Chart 46. Financial Sector, Weekly Chart
- Chart 47. Health Care Sector, Weekly Chart
- Chart 48. Technology Sector, Weekly Chart
- Chart 49. Industrial Sector, Weekly Chart
- Chart 50. Materials Sector, Weekly Chart
- Chart 51. Energy Sector, Weekly Chart
- Chart 52. Utilities Sector, Weekly Chart
- Chart 53. Consumer Staples, Weekly Chart
- Chart 54. Consumer Discretionary, Weekly Chart

XLF Financial Select Sector SPDR Fund NYSE

9-Mar-2018

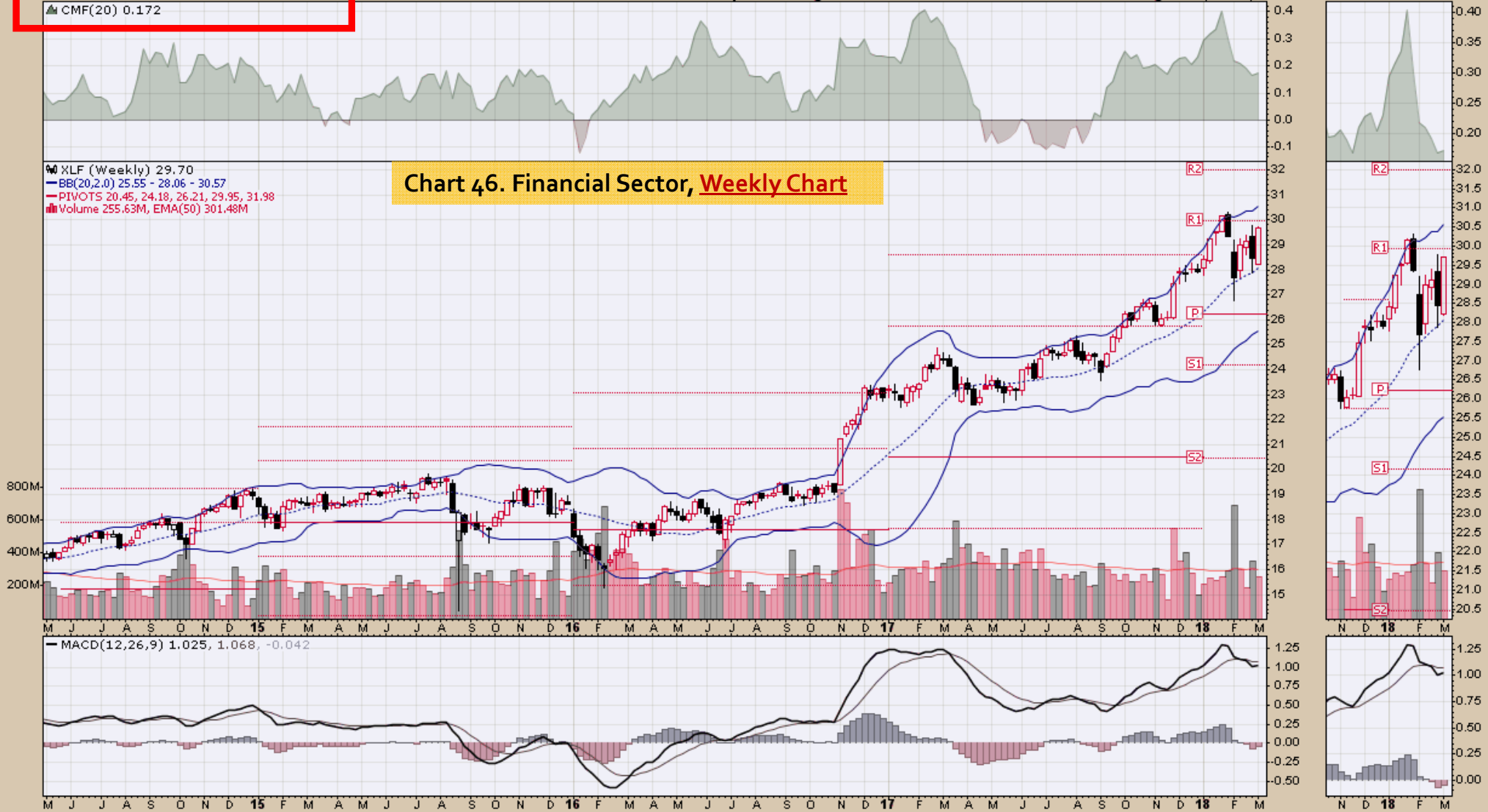
▲ CMF(20) 0.172

Open 28.22 High 29.72 Low 28.21 Close 29.70 Volume 255.6M Chg +1.26 (+4.43%) ▲

© StockCharts.com

Chart 46. Financial Sector, Weekly Chart

● XLF (Weekly) 29.70
— BB(20,2,0) 25.55 - 28.06 - 30.57
— PIVOTS 20.45, 24.18, 26.21, 29.95, 31.98
■ Volume 255.63M, EMA(50) 301.48M



XLV Health Care Select Sector SPDR Fund NYSE

9-Mar-2018

▲ CMF(20) 0.174

Open 83.26 High 86.54 Low 83.08 Close 86.51 Volume 42.1M Chg +2.87 (+3.43%) ▲

© StockCharts.com

Chart 47. Health Care Sector, Weekly Chart

● XLV (Weekly) 86.51
— BB(20,2,0) 78.66 - 84.16 - 89.66
— PIVOTS 61.71, 72.19, 78.20, 88.68, 94.69
■ Volume 42.13M, EMA(50) 40.87M



XLK Technology Select Sector SPDR Fund NYSE

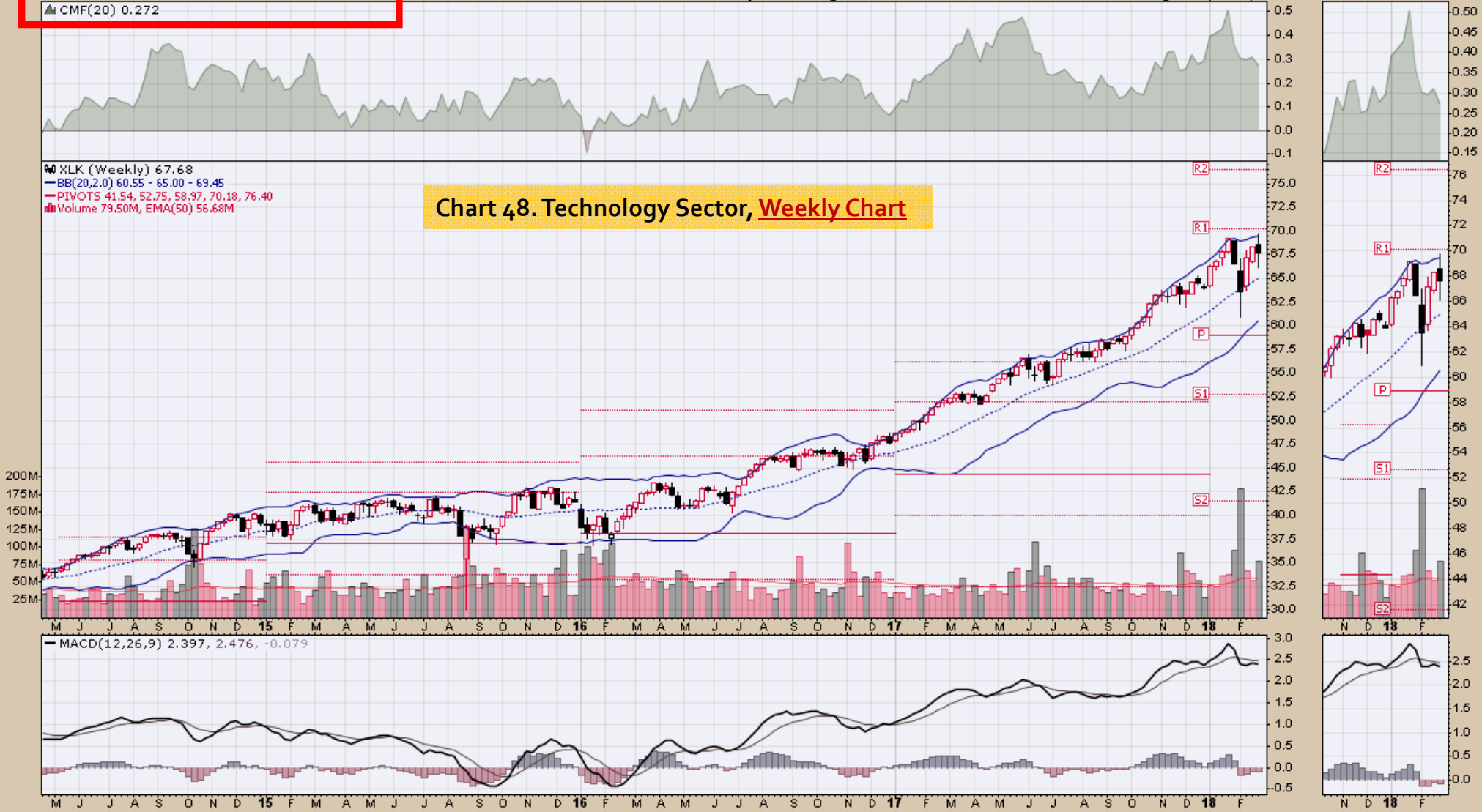
2-Mar-2018

▲ CMF(20) 0.272

© StockCharts.com
Open 68.58 High 69.71 Low 66.10 Close 67.68 Volume 79.5M Chg -0.61 (-0.89%) ▼

Chart 48. Technology Sector, Weekly Chart

● XLK (Weekly) 67.68
— BB(20,2,0) 60.55 - 65.00 - 69.45
— PIVOTS 41.54, 52.75, 58.97, 70.18, 76.40
■ Volume 79.50M, EMA(50) 56.68M

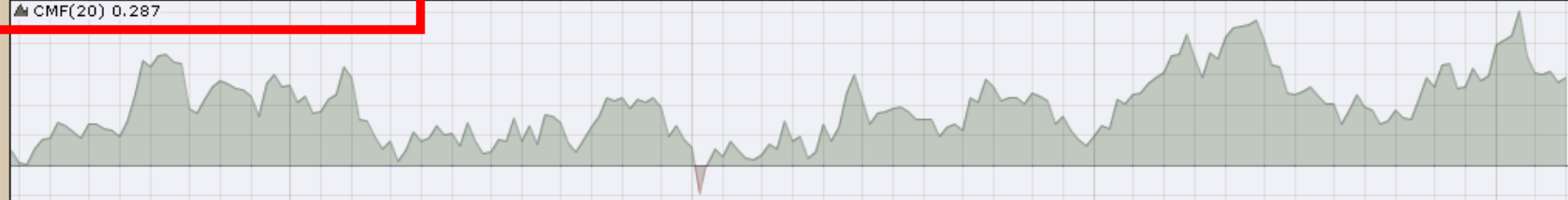


XLK Technology Select Sector SPDR Fund NYSE

9-Mar-2018

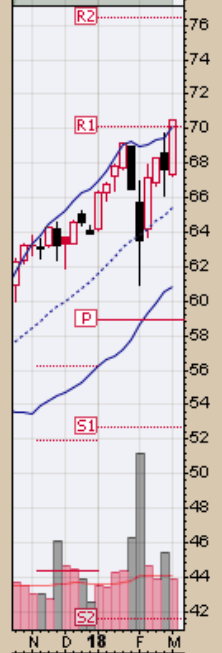
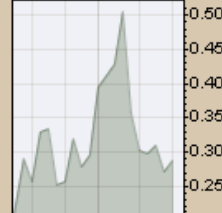
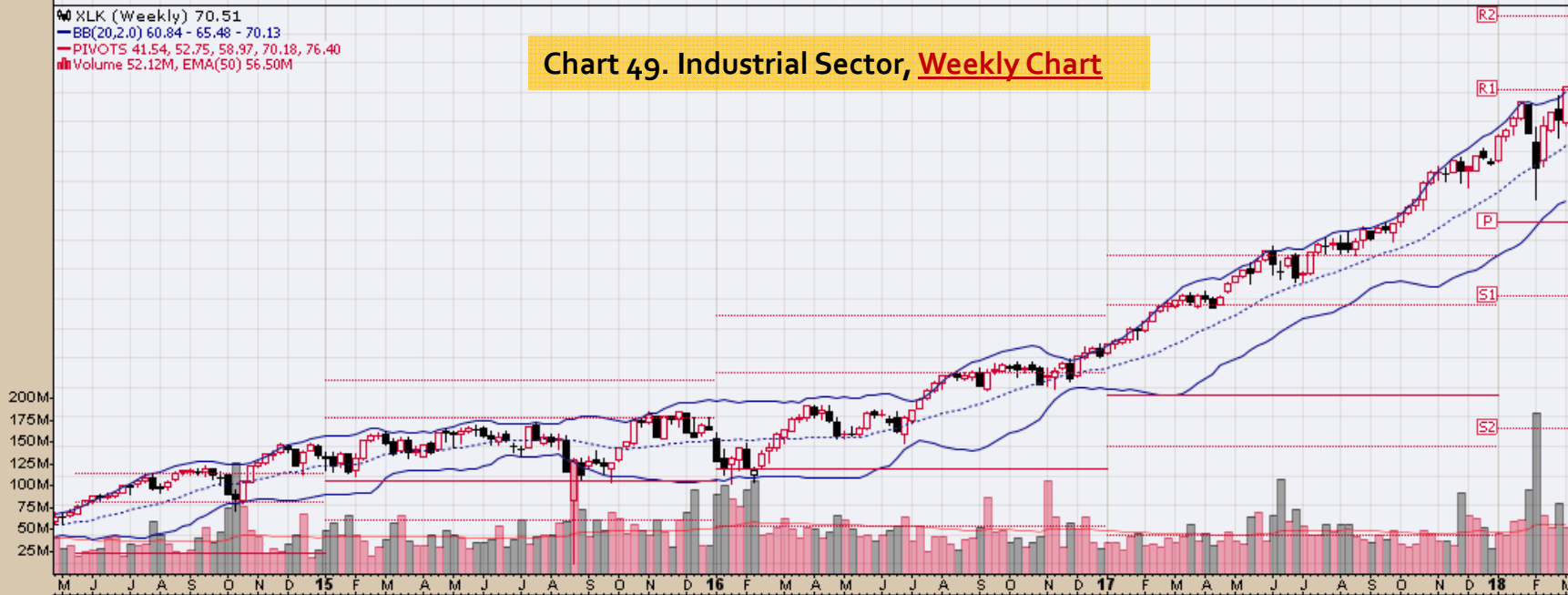
▲ CMF(20) 0.287

© StockCharts.com
Open 67.36 High 70.51 Low 67.21 Close 70.51 Volume 52.1M Chg +2.83 (+4.18%) ▲

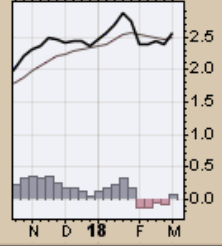


● XLK (Weekly) 70.51
— BB(20,2.0) 60.84 - 65.48 - 70.13
— PIVOTS 41.54, 52.75, 58.97, 70.18, 76.40
■ Volume 52.12M, EMA(50) 56.50M

Chart 49. Industrial Sector, Weekly Chart



— MACD(12,26,9) 2.567, 2.494, 0.073



XLB Materials Select Sector SPDR Fund NYSE

9-Mar-2018

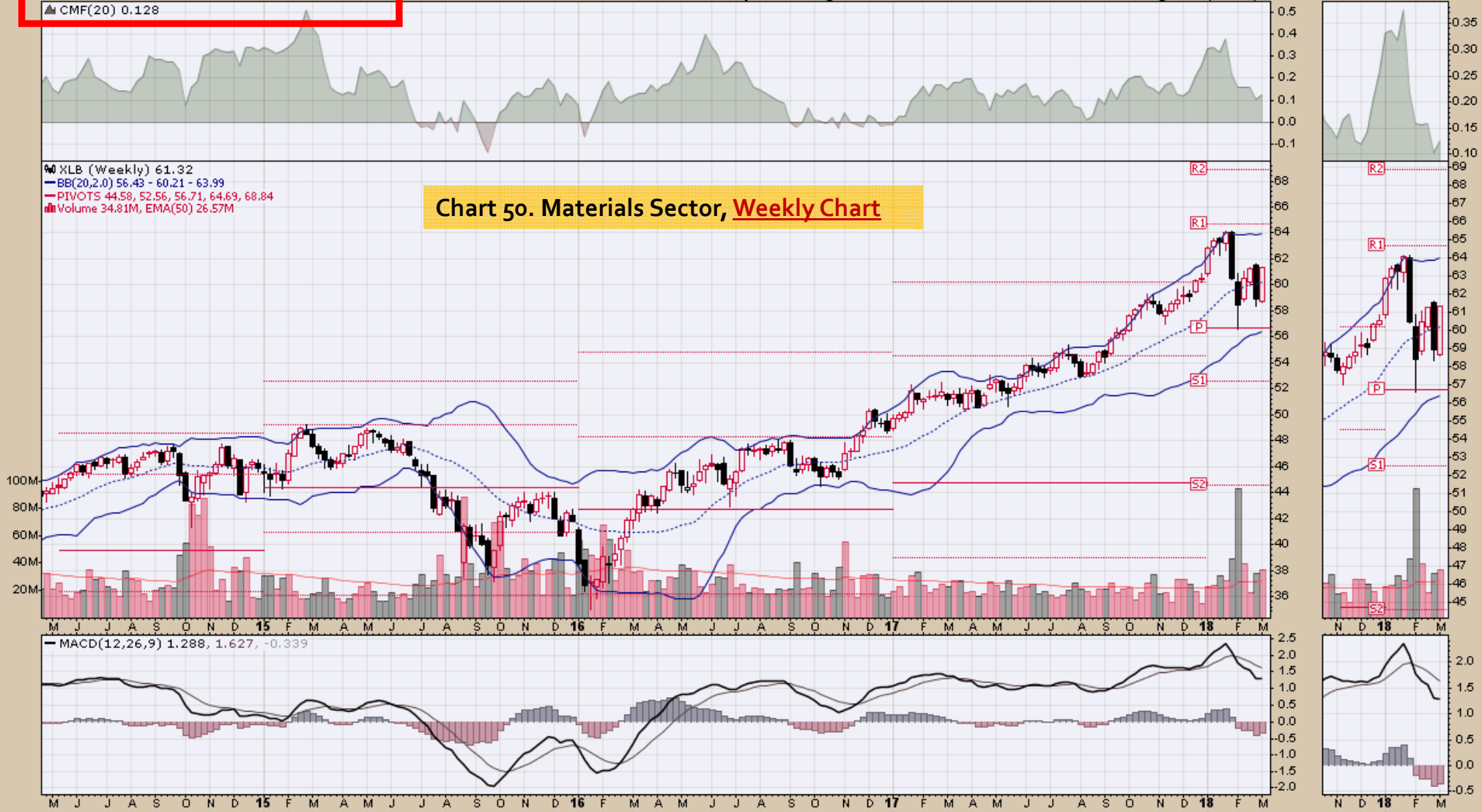
▲ CMF(20) 0.128

Open 58.69 High 61.35 Low 58.61 Close 61.32 Volume 34.8M Chg +2.36 (+4.00%) ▲

© StockCharts.com

Chart 50. Materials Sector, Weekly Chart

● XLB (Weekly) 61.32
— BB(20,2.0) 56.43 - 60.21 - 63.99
— PIVOTS 44.58, 52.56, 56.71, 64.69, 68.84
■ Volume 34.81M, EMA(50) 26.57M



XLE Energy Select Sector SPDR Fund NYSE

9-Mar-2018

▲ CMF(20) 0.108

Open 66.64 High 68.51 Low 66.52 Close 68.45 Volume 60.3M Chg +1.50 (+2.24%) ▲

© StockCharts.com

Chart 51. Energy Sector, Weekly Chart

XLE (Weekly) 68.45
BB(20,2,0) 63.31 - 70.37 - 77.44
PIVOTS 55.31, 63.79, 69.07, 77.54, 82.82
Volume 60.28M, EMA(50) 70.58M



XLU Utilities Select Sector SPDR Fund NYSE

9-Mar-2018

▲ CMF(20) -0.078

Open 48.82 High 50.05 Low 48.71 Close 49.40 Volume 78.2M Chg +0.46 (+0.94%) ▲

© StockCharts.com

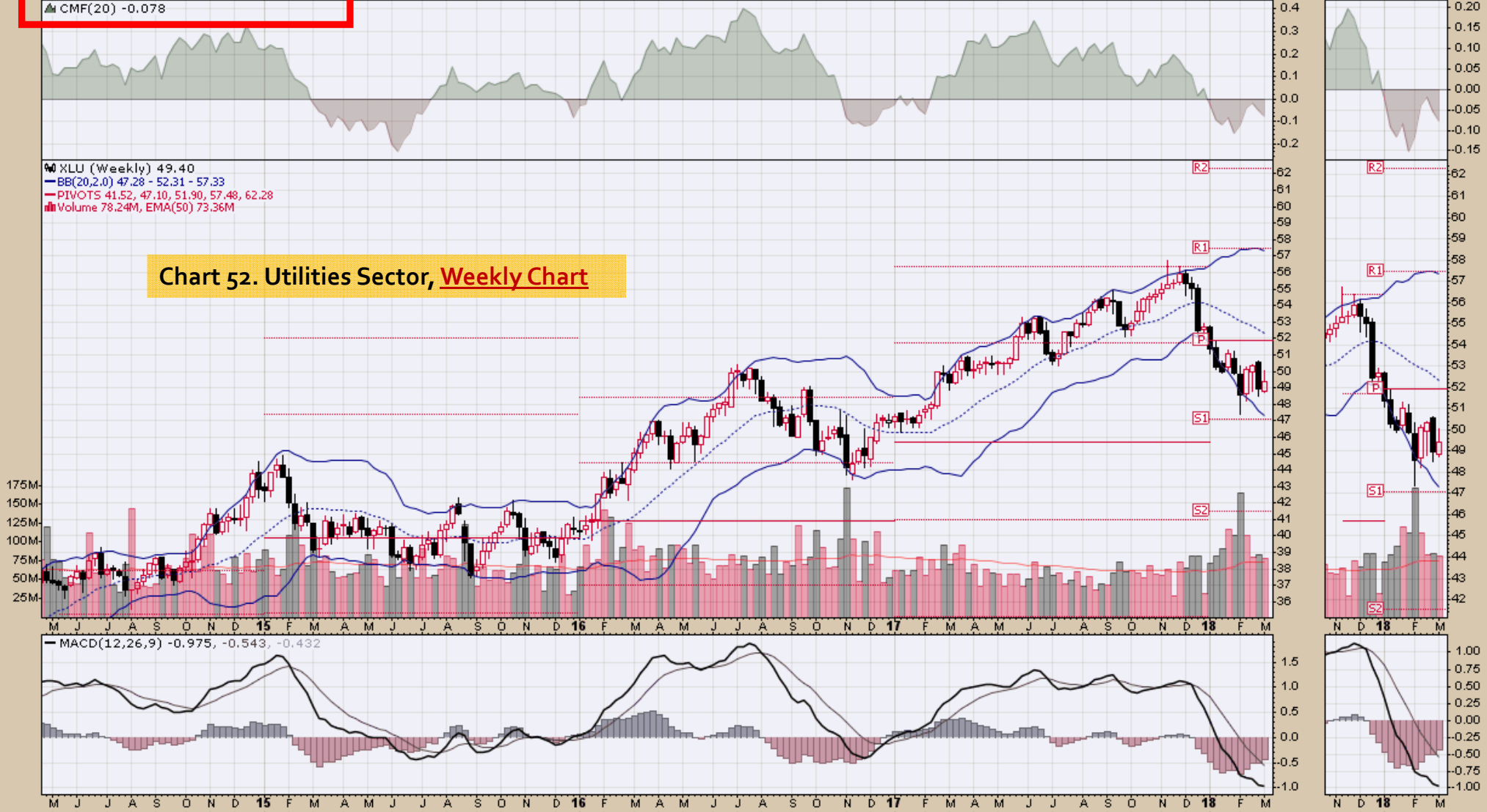
▲ XLU (Weekly) 49.40

— BB(20,2.0) 47.28 - 52.31 - 57.33

— PIVOTS 41.52, 47.10, 51.90, 57.48, 62.28

■ Volume 78.24M, EMA(50) 73.36M

Chart 52. Utilities Sector, Weekly Chart



XLP Consumer Staples Select Sector SPDR Fund NYSE

9-Mar-2018

▲ CMF(20) 0.191

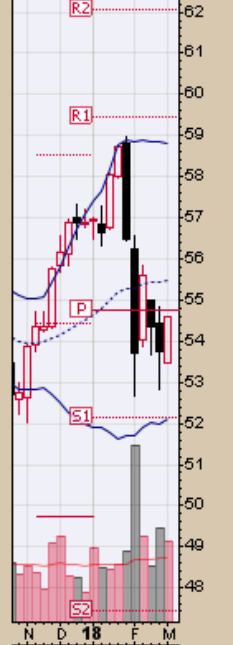
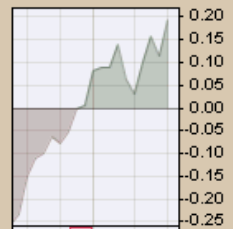
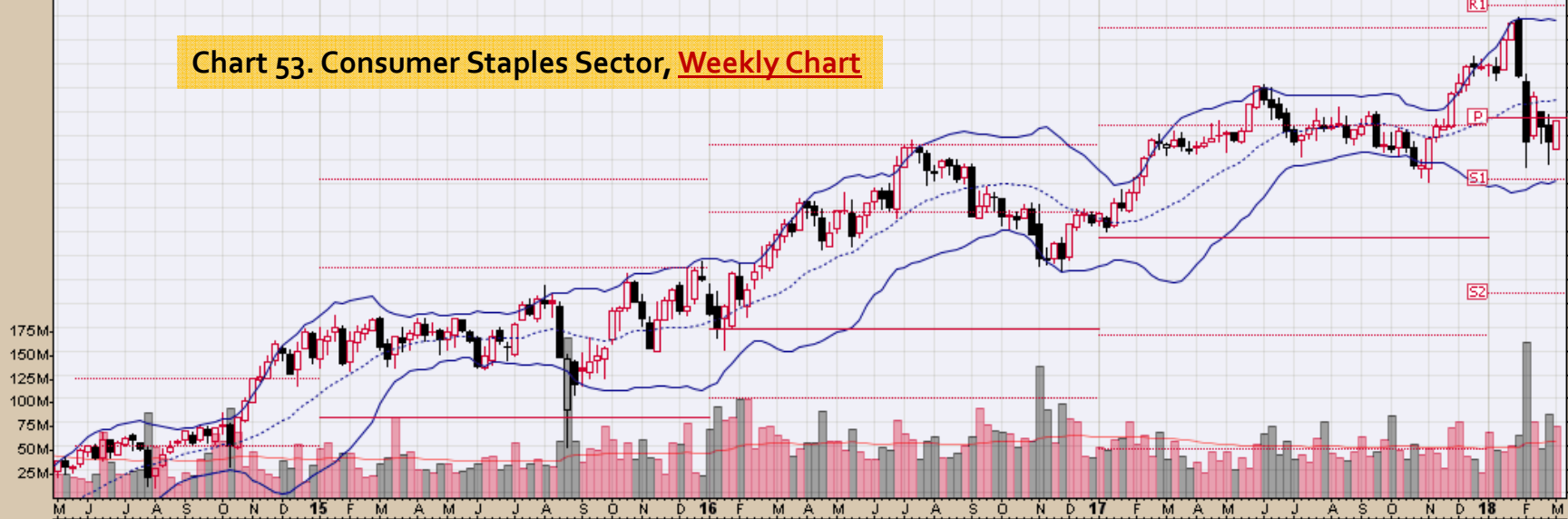
Open 53.45 High 54.61 Low 53.45 Close 54.60 Volume 74.4M Chg +0.86 (+1.60%) ▲

© StockCharts.com

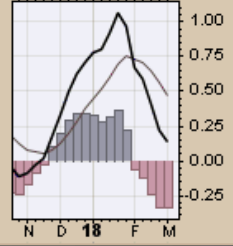


XLP (Weekly) 54.60
BB(20,2.0) 52.12 - 55.47 - 58.83
PIVOTS 47.43, 52.16, 54.73, 59.47, 62.04
Volume 74.45M, EMA(50) 59.83M

Chart 53. Consumer Staples Sector, Weekly Chart



MACD(12,26,9) 0.134, 0.475, -0.341



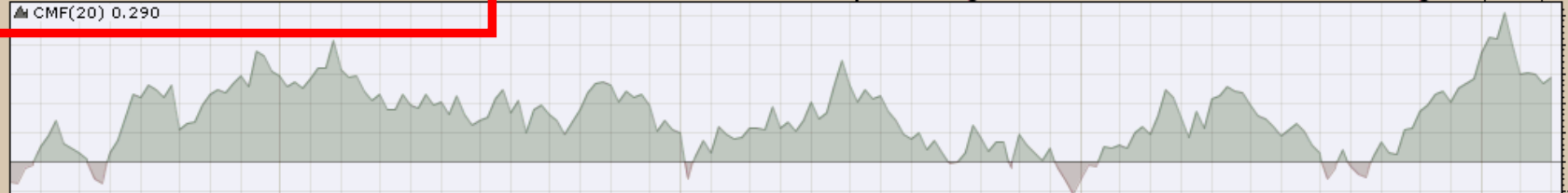
XLY Consumer Discretionary Select Sector SPDR Fund NYSE

9-Mar-2018

▲ CMF(20) 0.290

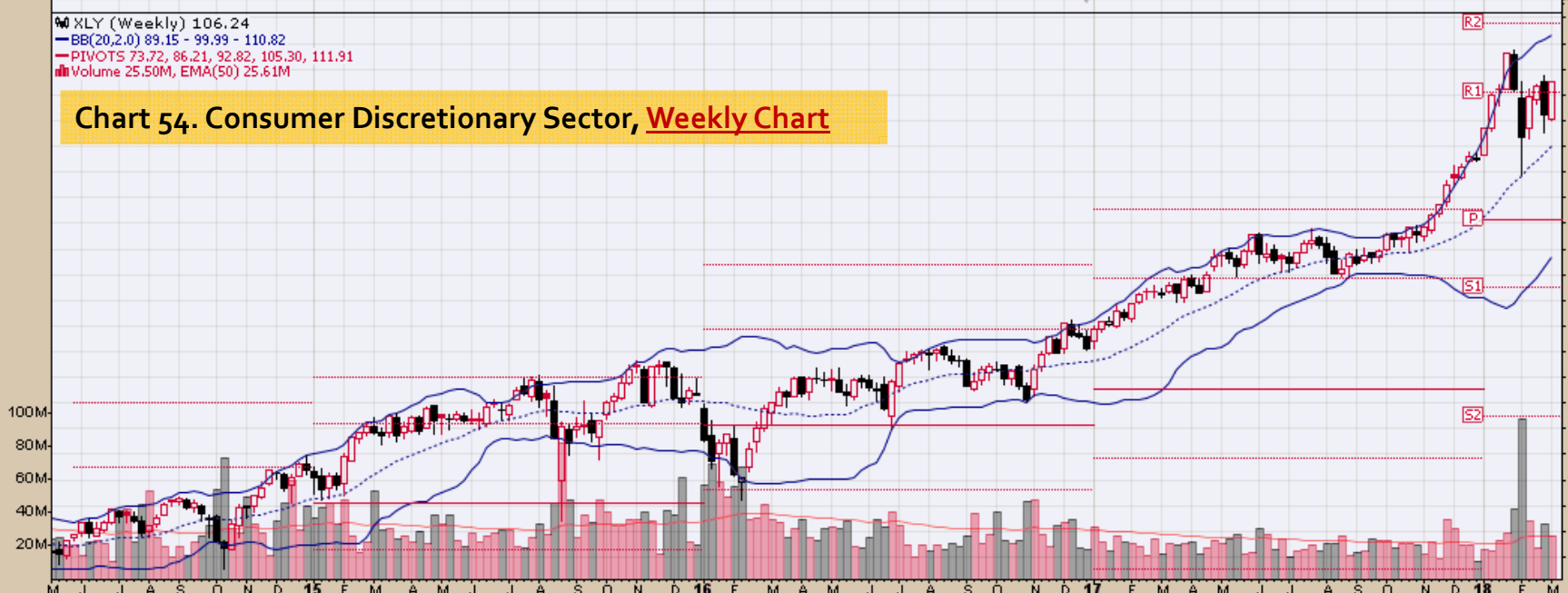
Open 102.67 High 106.27 Low 102.42 Close 106.24 Volume 25.5M Chg +3.19 (+3.10%)

© StockCharts.com

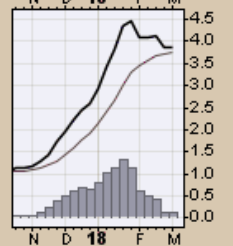
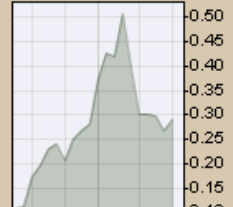


XLY (Weekly) 106.24
BB(20,2.0) 89.15 - 99.99 - 110.82
PIVOTS 73.72, 86.21, 92.82, 105.30, 111.91
Volume 25.50M, EMA(50) 25.61M

Chart 54. Consumer Discretionary Sector, Weekly Chart



MACD(12,26,9) 3.875, 3.749, 0.126



End