

***Market Outlook Considerations
Week Beginning
March 5, 2018***

DISCLAIMER-FOR-EDUCATIONAL-PURPOSES-ONLY

**Bobby Coats, Ph.D.
Professor – Economics
Department of Agricultural Economics and Agribusiness
University of Arkansas System
Division of Agriculture
Cooperative Extension Service**

Chart Book Index

Market Outlook Considerations for Week Beginning March 5, 2018

Chart Book Index

- Chart 1. \$UST10Y - 10-Year US Treasury Yield, Weekly Chart
- Chart 2. \$UST10Y - 10-Year US Treasury Yield, Daily Chart
- Chart 3. \$UST10Y - 10-Year US Treasury Yield, Daily Chart
- Chart 4. Power Shares US Dollar Index, Weekly Chart
- Chart 5. Power Shares US Dollar Index, Daily Chart
- Chart 6. Power Shares US Dollar Index, Monthly
- Chart 7. EURO Monthly Chart
- Chart 8. Australian Dollar Monthly Chart
- Chart 9. Canadian Dollar Monthly Chart
- Chart 10. Japanese Yen Monthly Chart
- Chart 11. British Pound Monthly Chart
- Chart 12. Dow Jones, Monthly Chart
- Chart 13. Dow Transports Monthly Chart
- Chart 14. S&P 500 Large Caps Monthly Chart
- Chart 15. Nasdaq Composite, Monthly Chart

Continued Next Slide

Chart Book Index

Market Outlook Considerations for Week Beginning March 5, 2018

Chart Book Index

- Chart 16. World less U.S. & Canada Monthly Chart
- Chart 17. Emerging Markets Monthly Chart
- Chart 18. Australia Monthly Chart
- Chart 19. Brazil Monthly Chart
- Chart 20. Canada Monthly Chart
- Chart 21. China Monthly Chart
- Chart 22. Mexico Monthly Chart
- Chart 23. Japan Monthly Chart
- Chart 24. Russia Monthly Chart
- Chart 25. India Monthly Chart
- Chart 26. \$CRB Reuters/Jefferies CRB Index, Weekly Chart
- Chart 27. \$CRB Reuters/Jefferies CRB Index
- Chart 28. \$CRB Reuters/Jefferies CRB Index
- Chart 29. \$WTIC, Weekly Chart
- Chart 30. \$WTIC, Daily Chart

Continued Next Slide

Chart Book Index

Market Outlook Considerations for Week Beginning March 5, 2018

Chart Book Index

- Chart 31. \$WTIC, Monthly Chart
- Chart 32. Soybeans, Weekly Chart
- Chart 33. Soybeans, Daily Chart
- Chart 34. Soybeans, Monthly Chart
- Chart 35. Corn, Weekly Chart
- Chart 36. Corn, Daily Chart
- Chart 37. Corn, Monthly Chart
- Chart 38. Rough Rice, Weekly
- Chart 39. Rough Rice, Daily Chart
- Chart 40. Cotton, Weekly Chart
- Chart 41. Cotton, Daily Chart
- Chart 42. Cotton, Monthly Chart
- Chart 43. Wheat, Weekly Chart
- Chart 44. Wheat, Daily Chart
- Chart 45. Wheat, Monthly Chart

Continued Next Slide

Chart Book Index

Market Outlook Considerations for Week Beginning March 5, 2018

Chart Book Index - Sectors

- Chart 46. Financial Sector, Weekly Chart
- Chart 47. Health Care Sector, Weekly Chart
- Chart 48. Technology Sector, Weekly Chart
- Chart 49. Industrial Sector, Weekly Chart
- Chart 50. Materials Sector, Weekly Chart
- Chart 51. Energy Sector, Weekly Chart
- Chart 52. Utilities Sector, Weekly Chart
- Chart 53. Consumer Staples, Weekly Chart
- Chart 54. Consumer Discretionary, Weekly Chart

Continued Next Slide

***\$UST10Y – 10 Year US Treasury Yield
Weekly, Daily and Monthly Charts***

\$UST10Y 10-Year US Treasury Yield (EOD) INDX

2-Mar-2018

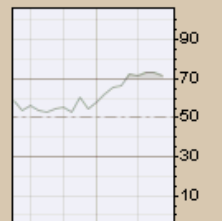
© StockCharts.com

Open 2.86 High 2.90 Low 2.81 Close 2.86 Chg -0.02 (-0.69%)

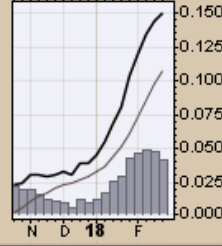
▲ RSI(14) 71.76

Chart 1. \$UST10Y - 10-Year US Treasury Yield, Weekly Chart

\$UST10Y (Weekly) 2.86
BB(20,2,0) 2.14 - 2.54 - 2.95
PIVOTS 1.79, 2.09, 2.36, 2.66, 2.93
Volume undef



MACD(12,26,9) 0.149, 0.108, 0.042



\$UST10Y 10-Year US Treasury Yield (EOD) INDX

2-Mar-2018

Open 2.860 High 2.860 Low 2.860 Close 2.860 Chg +0.050 (+1.78%)

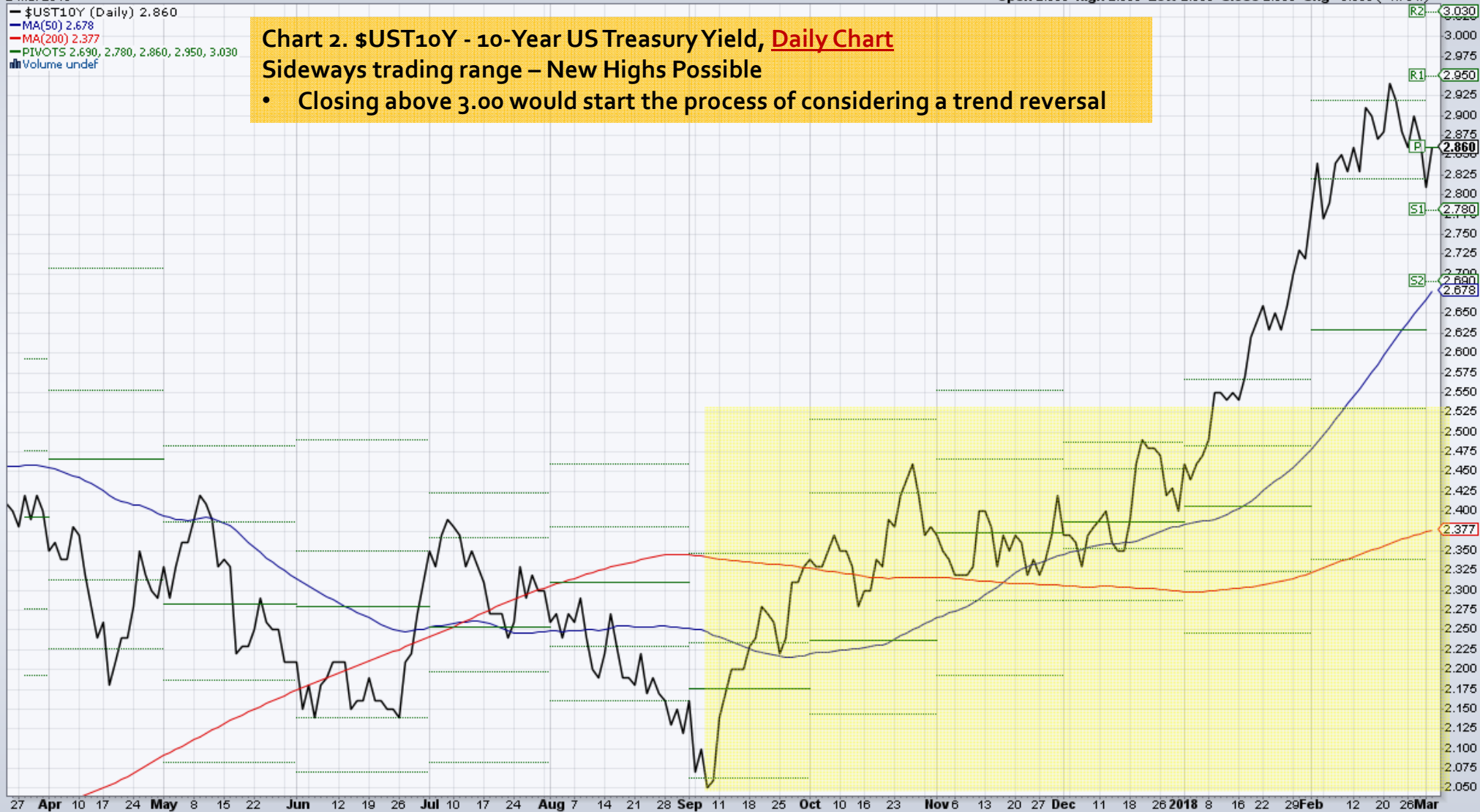
© StockCharts.com

— \$UST10Y (Daily) 2.860
— MA(50) 2.678
— MA(200) 2.377
— PIVOTS 2.690, 2.780, 2.860, 2.950, 3.030
■ Volume under

Chart 2. \$UST10Y - 10-Year US Treasury Yield, Daily Chart

Sideways trading range – New Highs Possible

- Closing above 3.00 would start the process of considering a trend reversal



\$UST10Y 10-Year US Treasury Yield (EOD) INDX

2-Mar-2018

Open 2.81 High 2.86 Low 2.81 Close 2.86 Chg -0.01 (-0.35%) ▼

© StockCharts.com

▲ RSI(14) 67.15

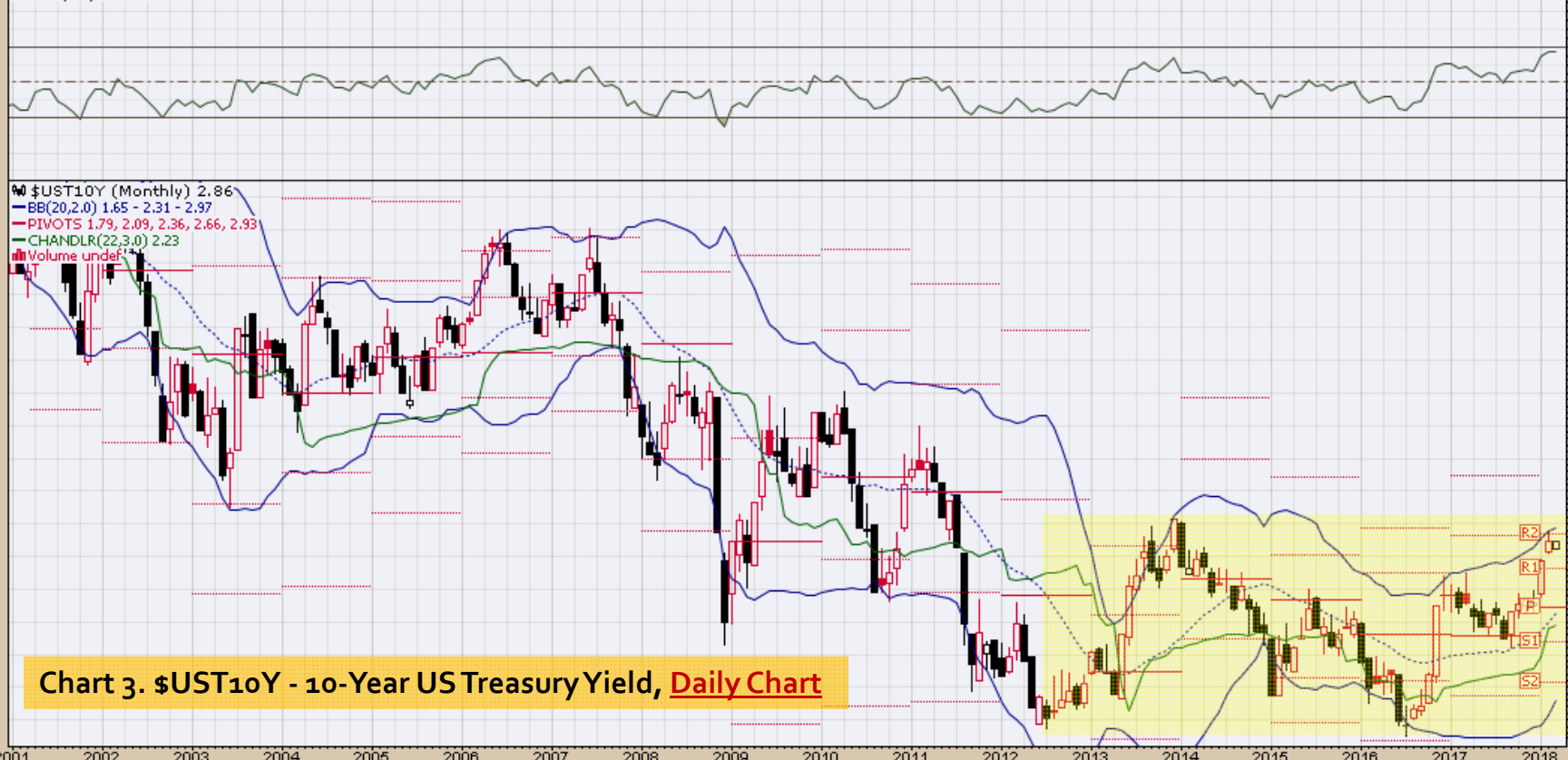
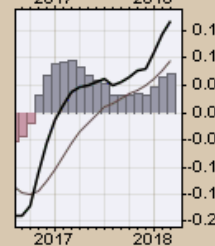
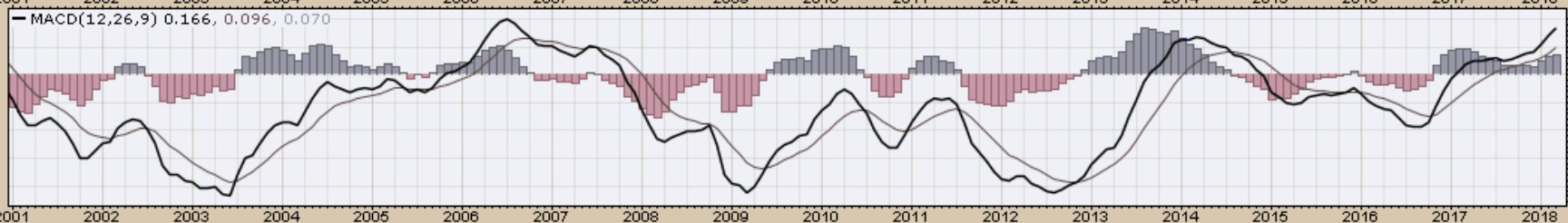
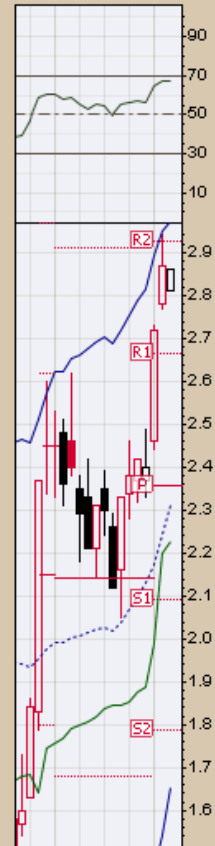


Chart 3. \$UST10Y - 10-Year US Treasury Yield, **Daily Chart**



US Dollar Index
Weekly, Daily and Monthly Charts

\$USD US Dollar Index - Cash Settle (EOD) ICE

© StockCharts.com

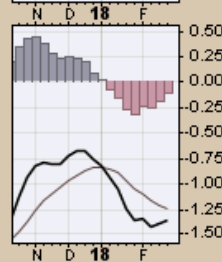
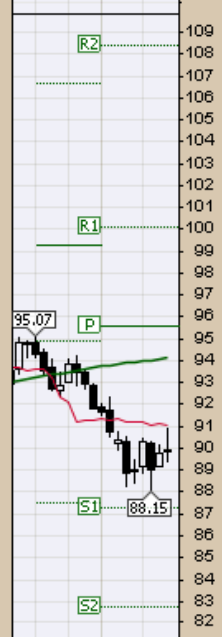
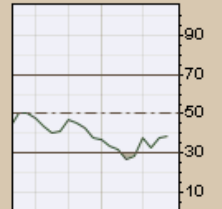
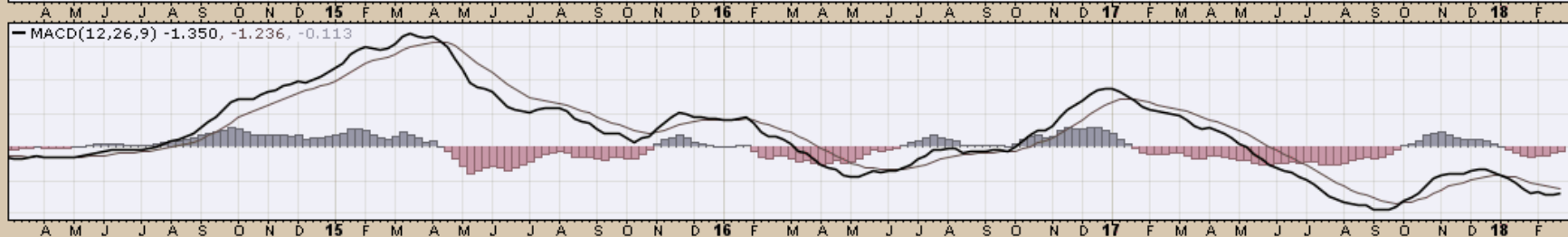
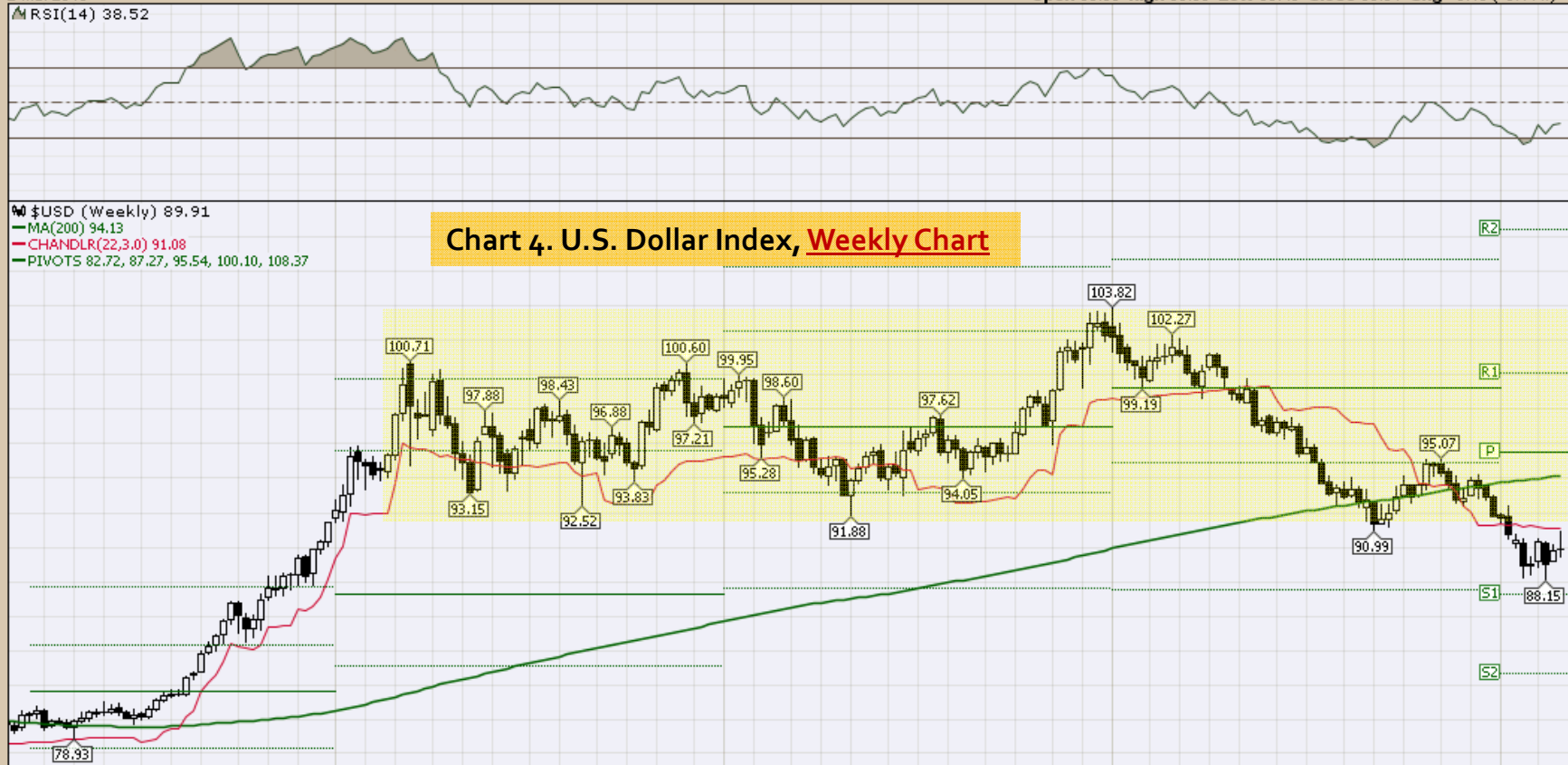
2-Mar-2018

Open 89.88 High 90.89 Low 89.43 Close 89.91 Chg +0.10 (+0.11%) ▲

▲ RSI(14) 38.52

▲ \$USD (Weekly) 89.91
— MA(200) 94.13
— CHANDLR(22,3,0) 91.08
— PIVOTS 82.72, 87.27, 95.54, 100.10, 108.37

Chart 4. U.S. Dollar Index, Weekly Chart



\$USD US Dollar Index - Cash Settle (EOD) ICE

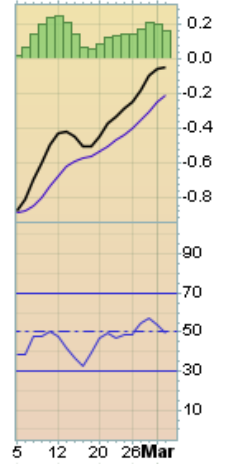
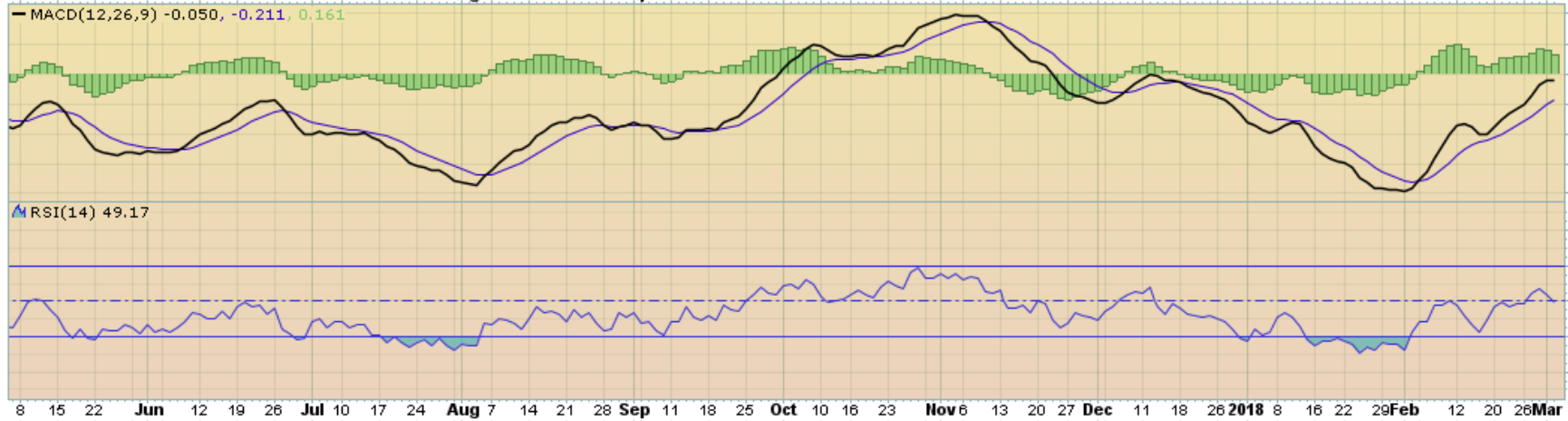
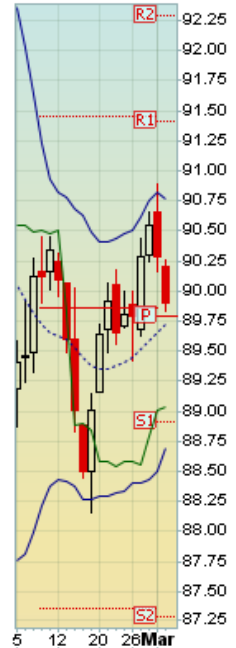
2-Mar-2018

© StockCharts.com

Open 90.20 High 90.26 Low 89.83 Close 89.91 Chg -0.38 (-0.42%) ▼

US Dollar Index - Cash Settle (EOD) (Daily) 89.91
BB(20,2,0) 88.69 - 89.72 - 90.76
PIVOTS 87.28, 88.92, 89.78, 91.42, 92.28
CHANDLR(22,3,0) 89.03
Volume under

Chart 5. US Dollar Index, Daily Chart



\$USD US Dollar Index - Cash Settle (EOD) ICE

© StockCharts.com

2-Mar-2018

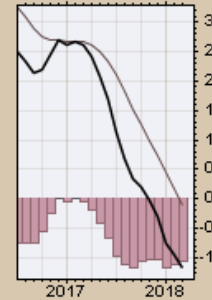
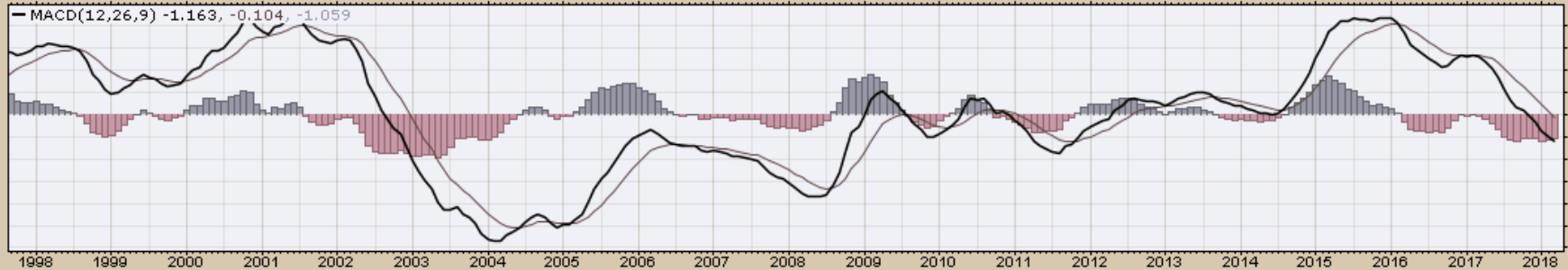
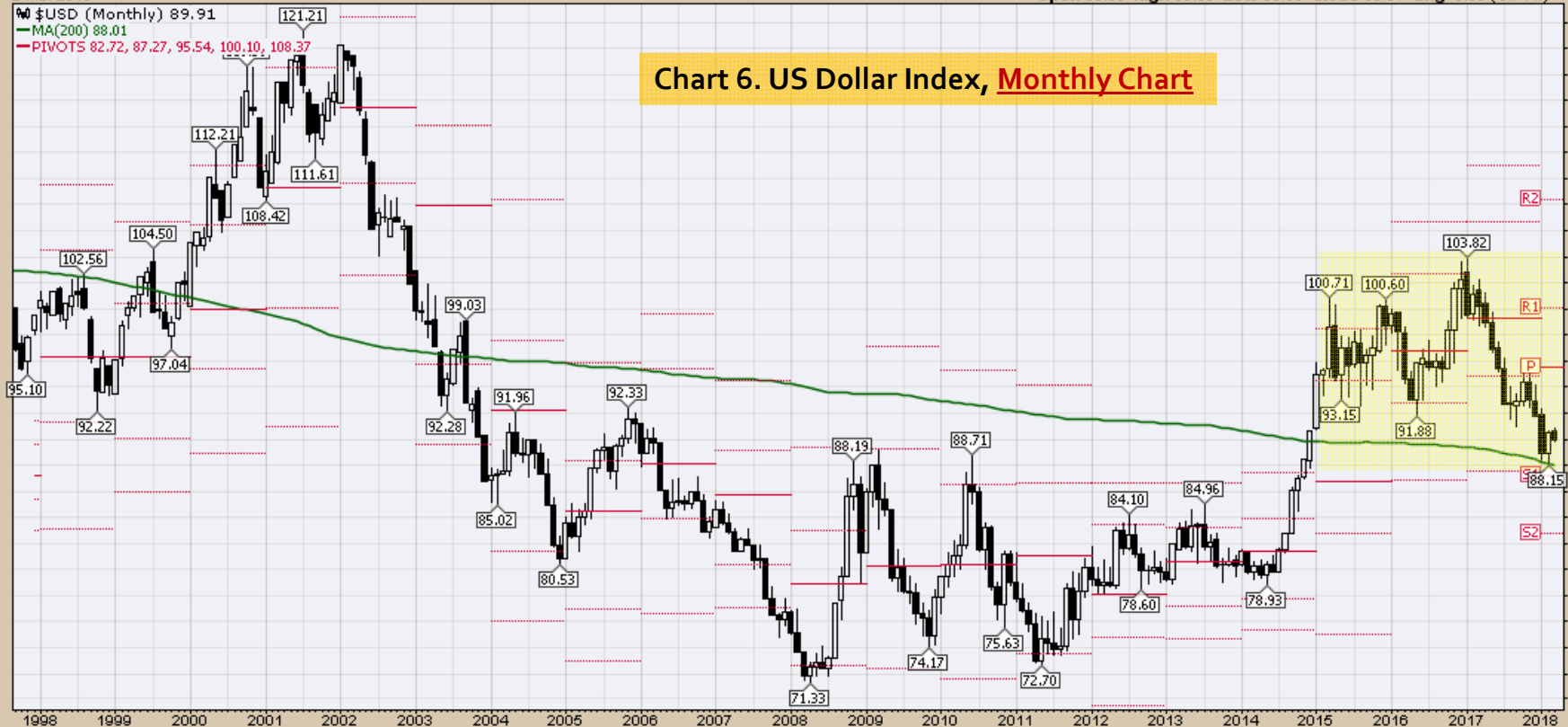
Open 90.65 High 90.89 Low 89.83 Close 89.91 Chg -0.65 (-0.71%)

\$USD (Monthly) 89.91

MA(200) 88.01

PIVOTS 82.72, 87.27, 95.54, 100.10, 108.37

Chart 6. US Dollar Index, Monthly Chart



Select Currency Charts
Monthly Charts

\$XEU Euro - Philadelphia INDX

2-Mar-2018

© StockCharts.com

Open 121.69 High 123.38 Low 121.55 Close 123.17 Chg +1.20 (+0.99%)

\$XEU (Monthly) 123.17

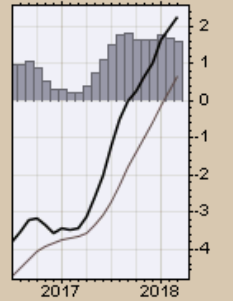
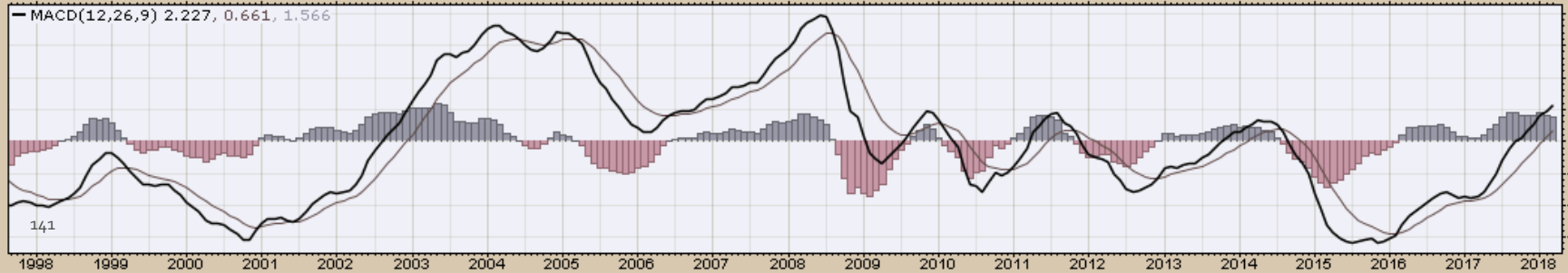
MA(200) 124.68

PIVOTS 97.44, 108.75, 114.72, 126.02, 131.99



Chart 7. EURO, Monthly Chart

- Trend remains up with corrections along the way



\$XAD Australian Dollar - Philadelphia INDX

2-Mar-2018

© StockCharts.com

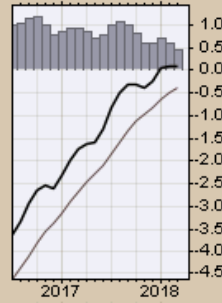
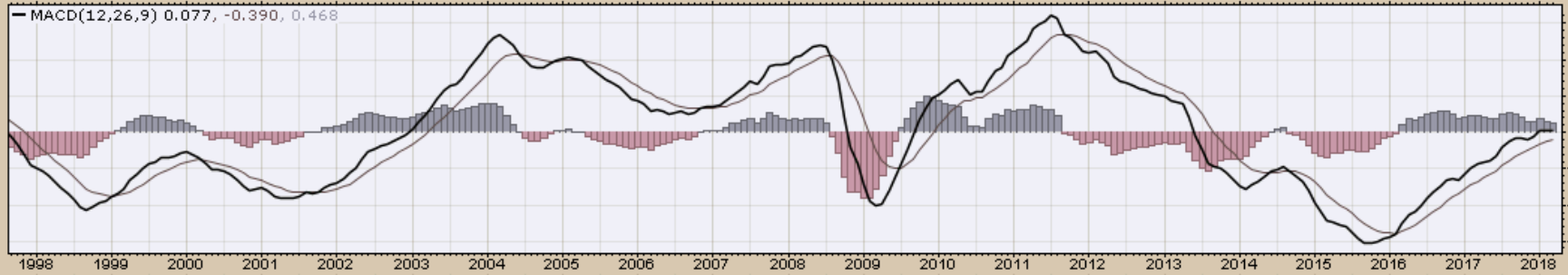
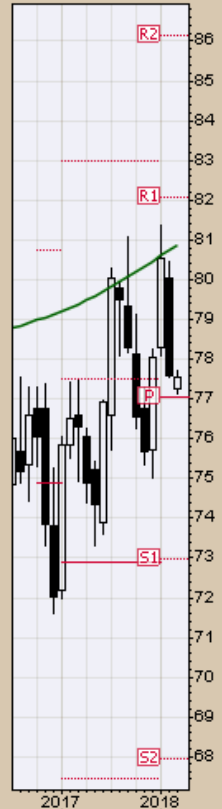
\$XAD (Monthly) 77.54

MA(200) 80.88

PIVOTS 67.93, 72.99, 77.03, 82.08, 86.12

Open 77.27 High 77.70 Low 77.15 Close 77.54 Chg -0.05 (-0.07%)

Chart 8. Australian Dollar, Monthly Chart



\$CDW Canadian Dollar - Philadelphia INDX

© StockCharts.com

2-Mar-2018

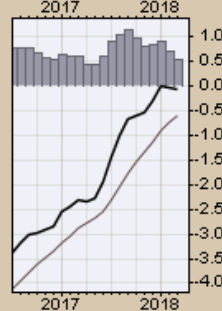
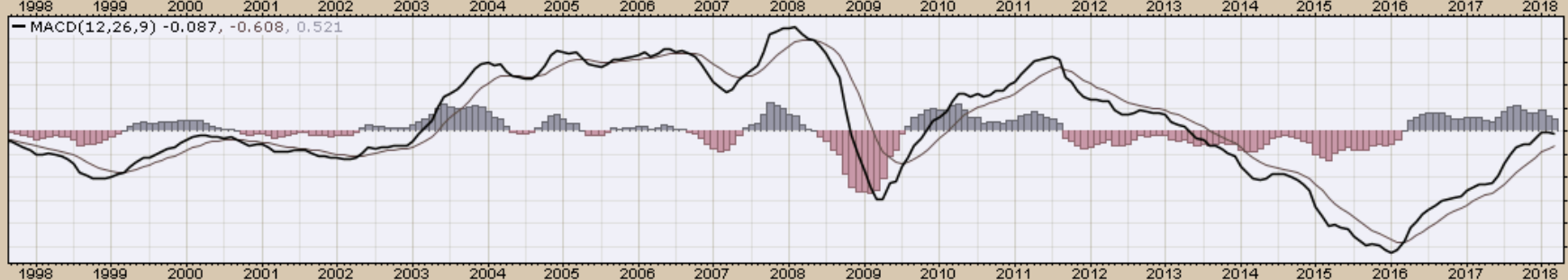
Open 77.78 High 78.07 Low 77.42 Close 77.63 Chg -0.30 (-0.39%)

\$CDW (Monthly) 77.63

MA(200) 85.36

PIVOTS 68.03, 73.78, 78.29, 84.04, 88.55

Chart 9. Canadian Dollar, Monthly Chart



\$XJY Japanese Yen - Philadelphia INDX

2-Mar-2018

© StockCharts.com

\$XJY (Monthly) 94.56

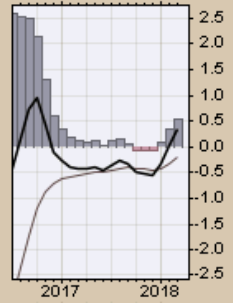
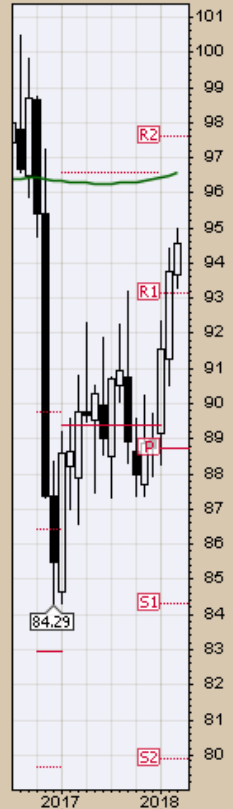
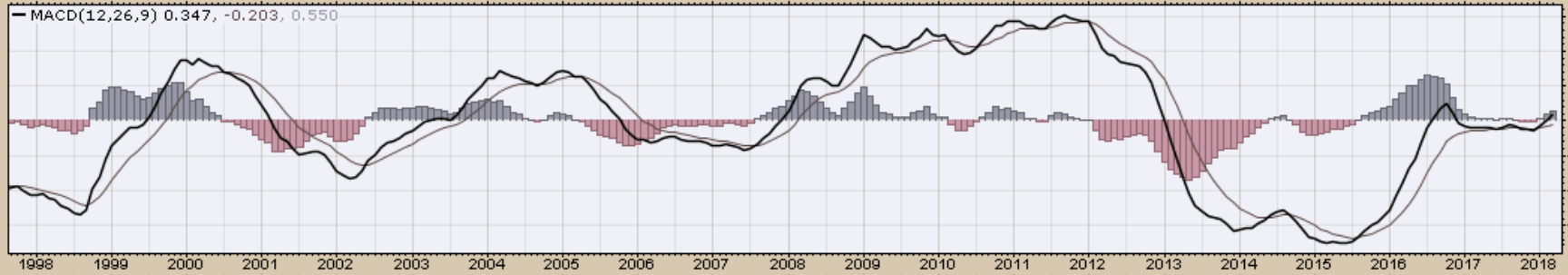
MA(200) 96.57

PIVOTS 79.87, 84.30, 88.74, 93.17, 97.61

Open 93.66 High 95.00 Low 93.28 Close 94.56 Chg +0.81 (+0.86%) ▲

Chart 10. Japanese Yen, Monthly Chart

- Slowly regaining positive momentum



\$XBP British Pound - Philadelphia INDXX

2-Mar-2018

© StockCharts.com

Open 137.42 High 138.05 Low 137.12 Close 138.02 Chg +0.39 (+0.28%) ▲

\$XBP (Monthly) 138.02

MA(200) 163.00

PIVOTS 114.49, 124.80, 130.69, 141.00, 146.89

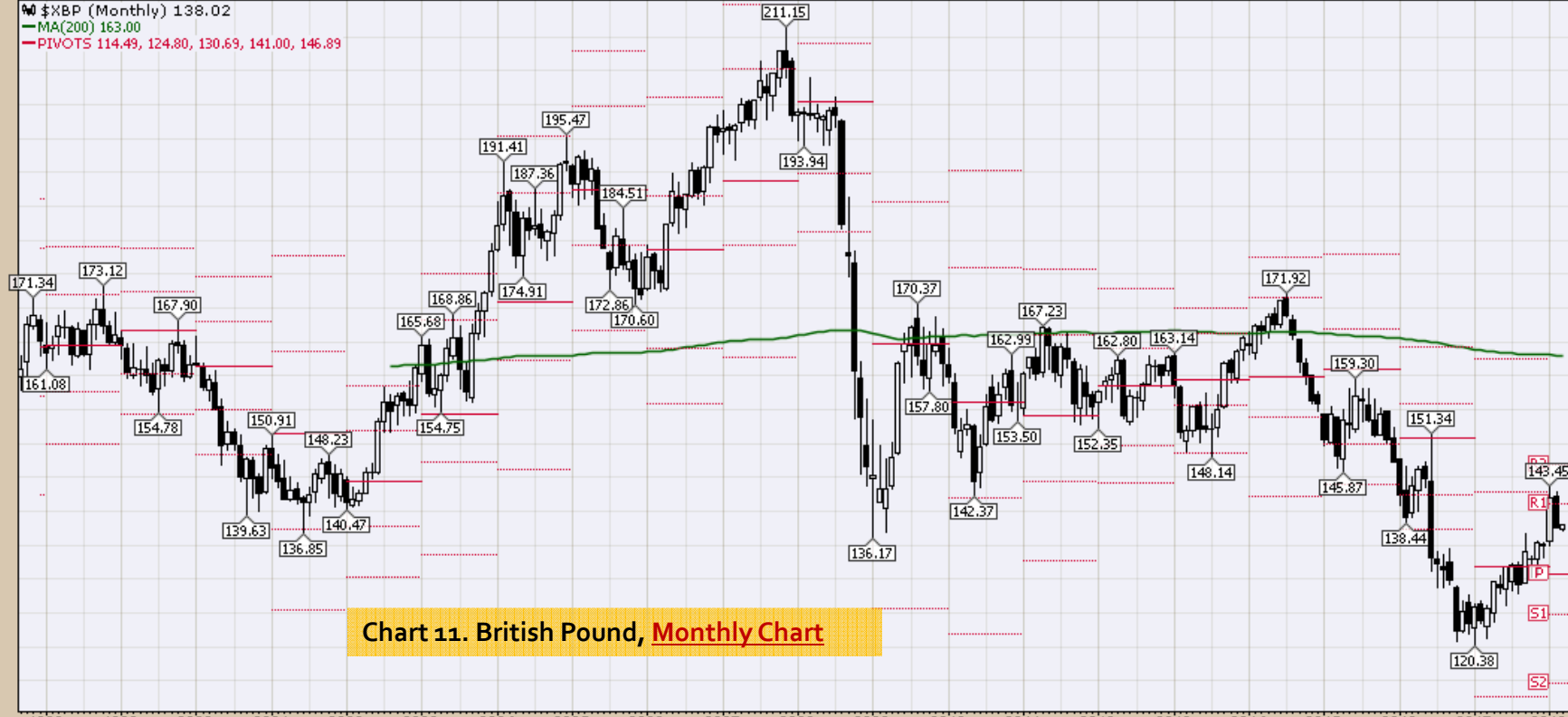
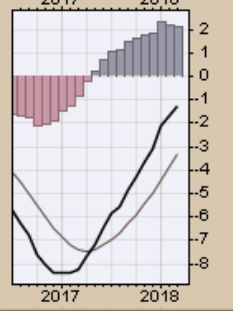
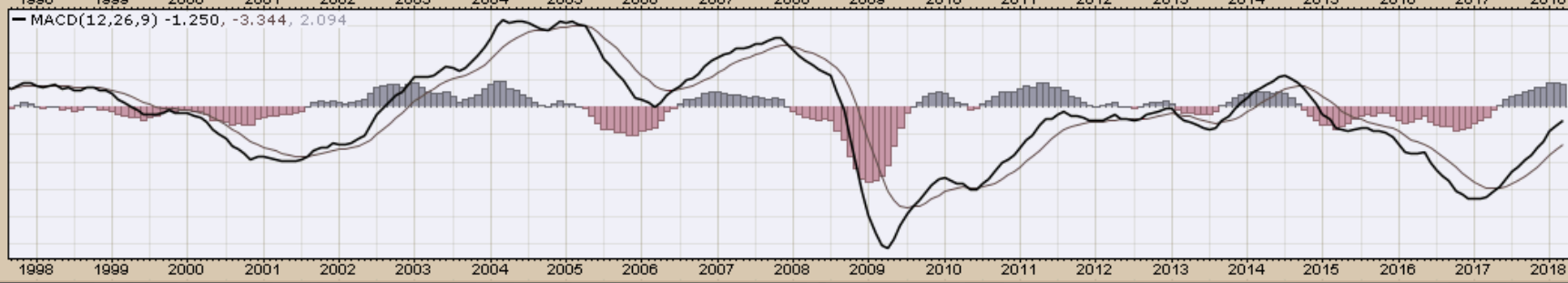
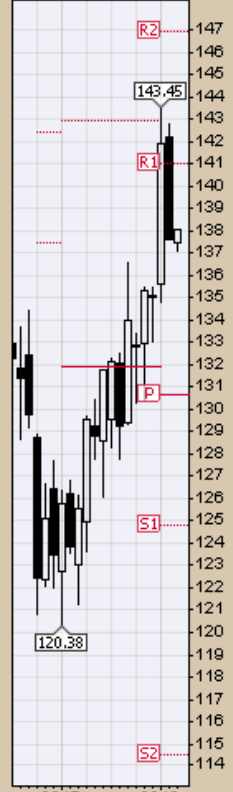


Chart 11. British Pound, Monthly Chart



Select Equity and Transportation Charts
Monthly Charts

\$INDU Dow Jones Industrial Average INDEX

2-Mar-2018

Open 25024.04 High 25185.35 Low 24217.76 Close 24538.06 Volume 946.9M Chg -491.14 (-1.96%)

© StockCharts.com

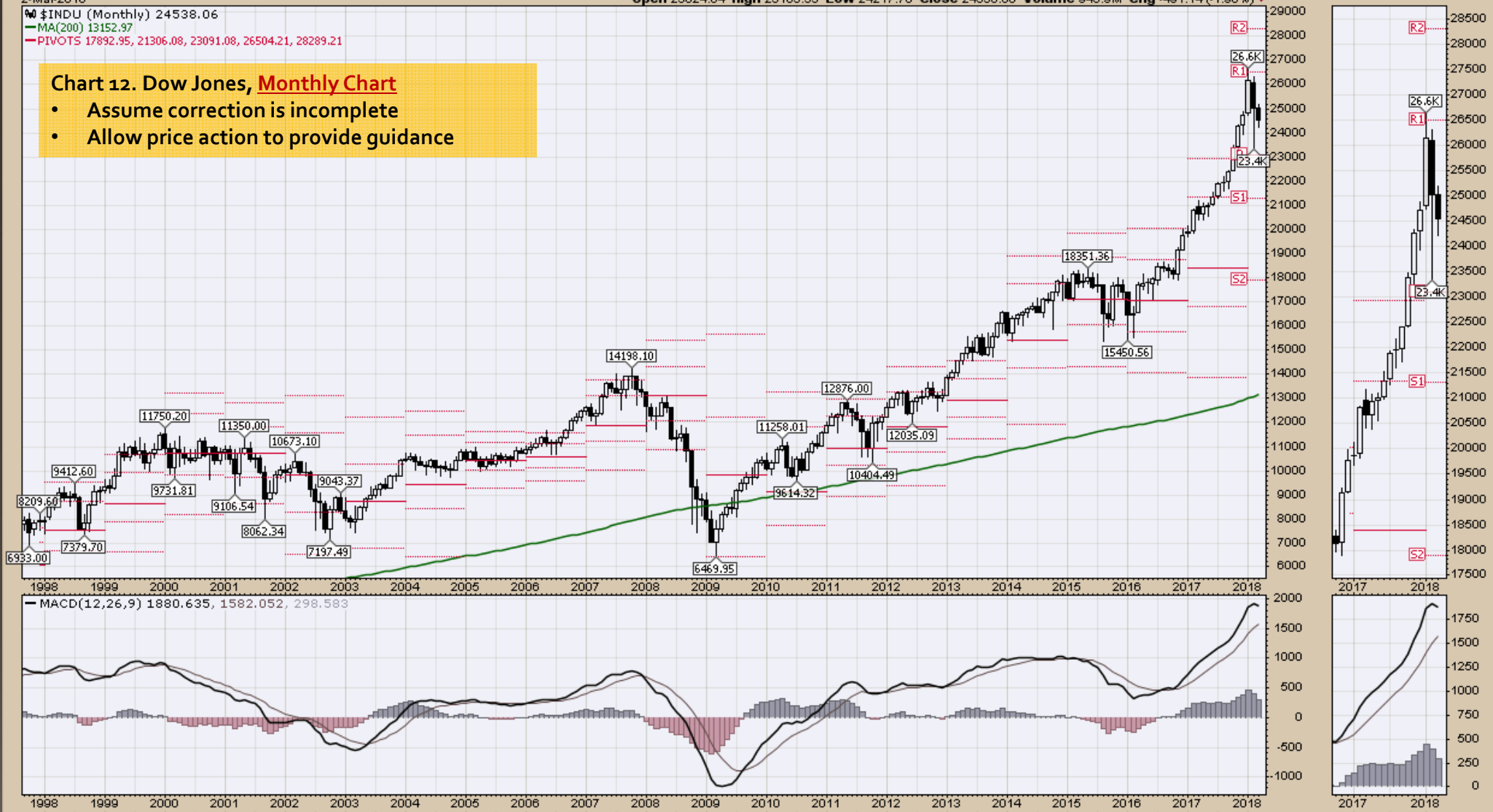
\$INDU (Monthly) 24538.06

MA(200) 13152.97

PIVOTS 17892.95, 21306.08, 23091.08, 26504.21, 28289.21

Chart 12. Dow Jones, Monthly Chart

- Assume correction is incomplete
- Allow price action to provide guidance



\$TRAN Dow Jones Transportation Average INDX

2-Mar-2018

Open 10377.72 High 10535.73 Low 10146.57 Close 10332.98 Volume 125.8M Chg -49.01 (-0.47%)

© StockCharts.com

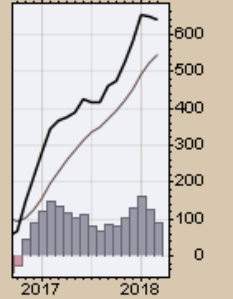
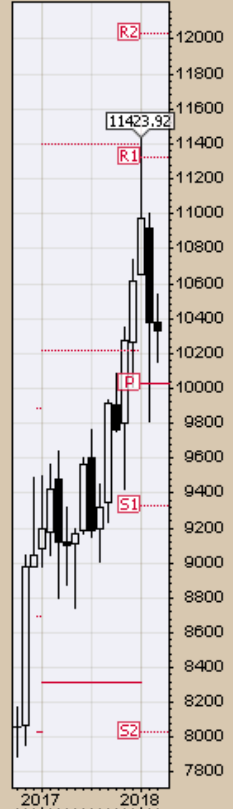
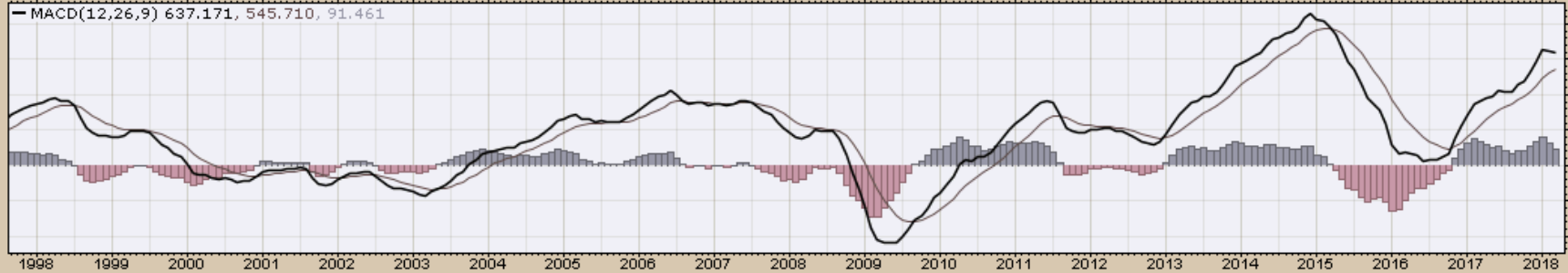
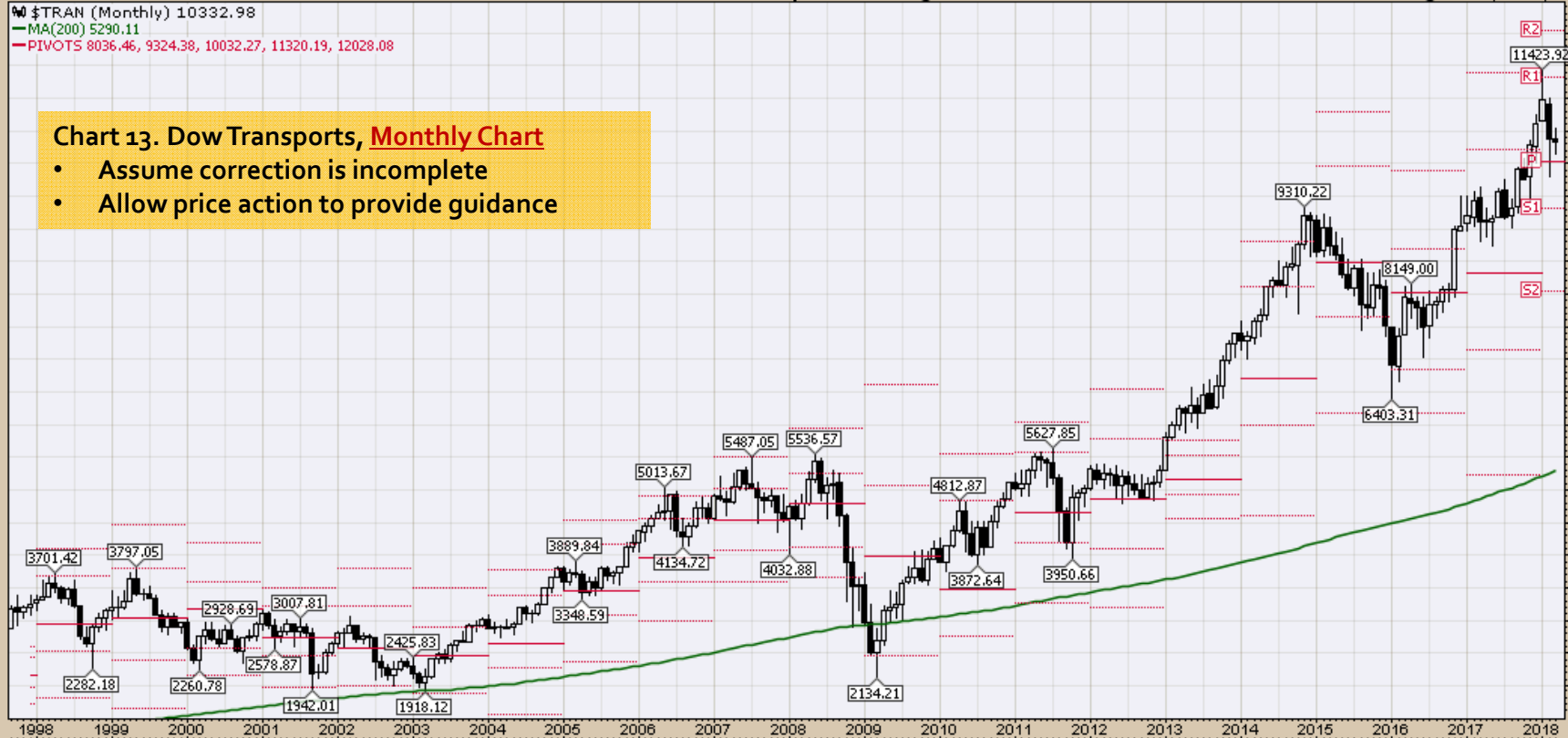
\$TRAN (Monthly) 10332.98

MA(200) 5290.11

PIVOTS 8036.46, 9324.38, 10032.27, 11320.19, 12028.08

Chart 13. Dow Transports, **Monthly Chart**

- Assume correction is incomplete
- Allow price action to provide guidance



\$SPX S&P 500 Large Cap Index INDX

2-Mar-2018

Open 2715.22 High 2730.89 Low 2647.32 Close 2691.25 Volume 5.2B Chg -22.58 (-0.83%)

© StockCharts.com

\$SPX (Monthly) 2691.25

MA(200) 1465.31

PIVOTS 2088.06, 2380.84, 2537.90, 2830.68, 2987.74

Chart 14. S&P 500 Large Caps, Monthly Chart

- Assume correction is incomplete
- Allow price action to provide guidance



\$COMPQ Nasdaq Composite INDEX

2-Mar-2018

Open 7274.75 High 7307.84 Low 7084.83 Close 7257.87 Volume 4.7B Chg -15.14 (-0.21%)

© StockCharts.com

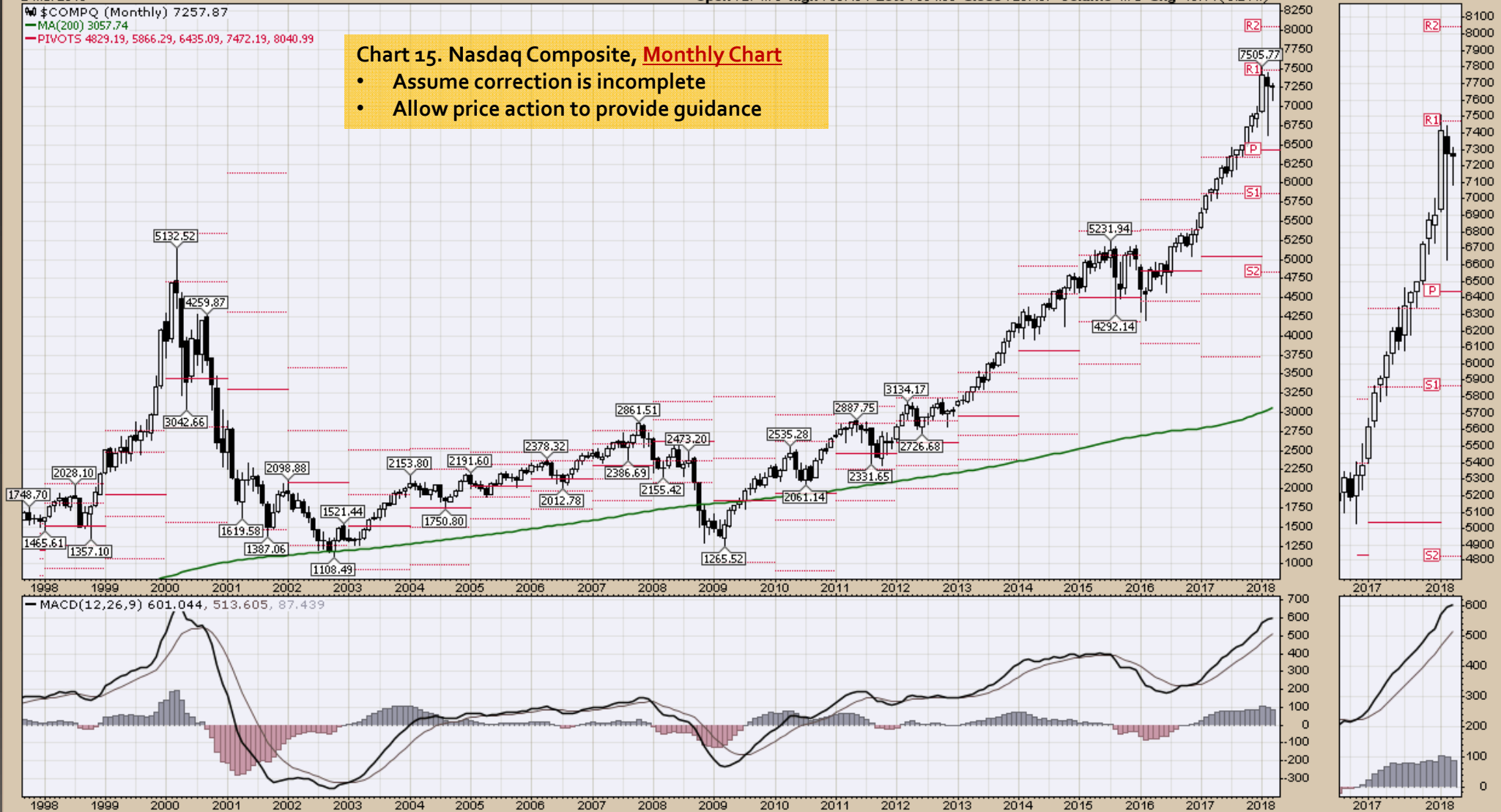
\$COMPQ (Monthly) 7257.87

MA(200) 3057.74

PIVOTS 4829.19, 5866.29, 6435.09, 7472.19, 8040.99

Chart 15. Nasdaq Composite, Monthly Chart

- Assume correction is incomplete
- Allow price action to provide guidance

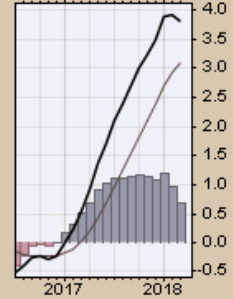
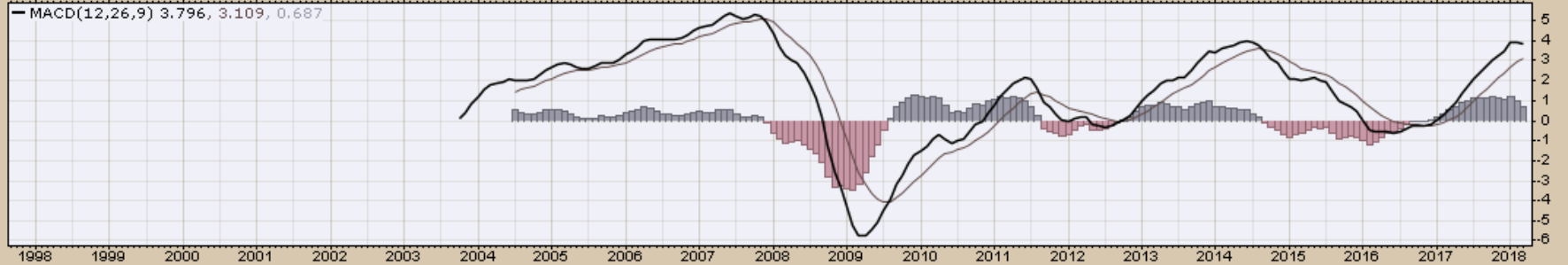
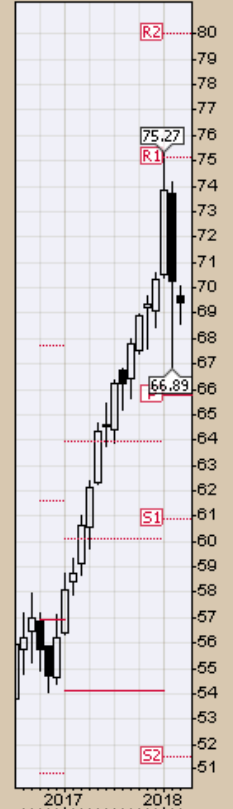
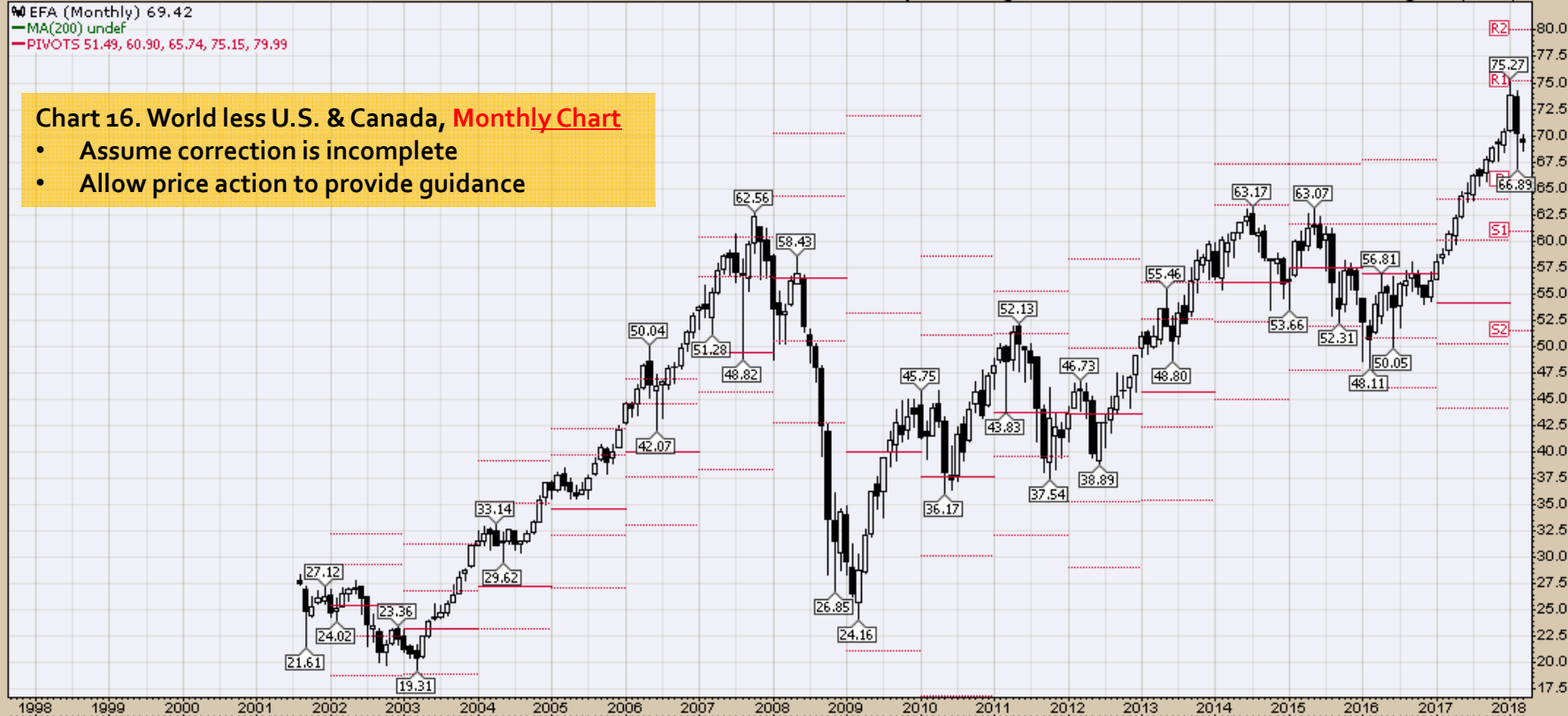


Select Global Equity Charts

EFA (Monthly) 69.42
MA(200) undef
PIVOTS 51.49, 60.90, 65.74, 75.15, 79.99

Chart 16. World less U.S. & Canada, **Monthly Chart**

- Assume correction is incomplete
- Allow price action to provide guidance



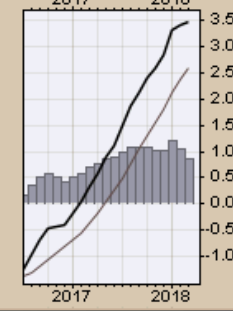
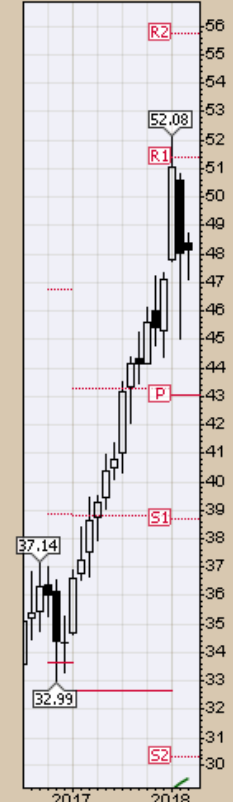
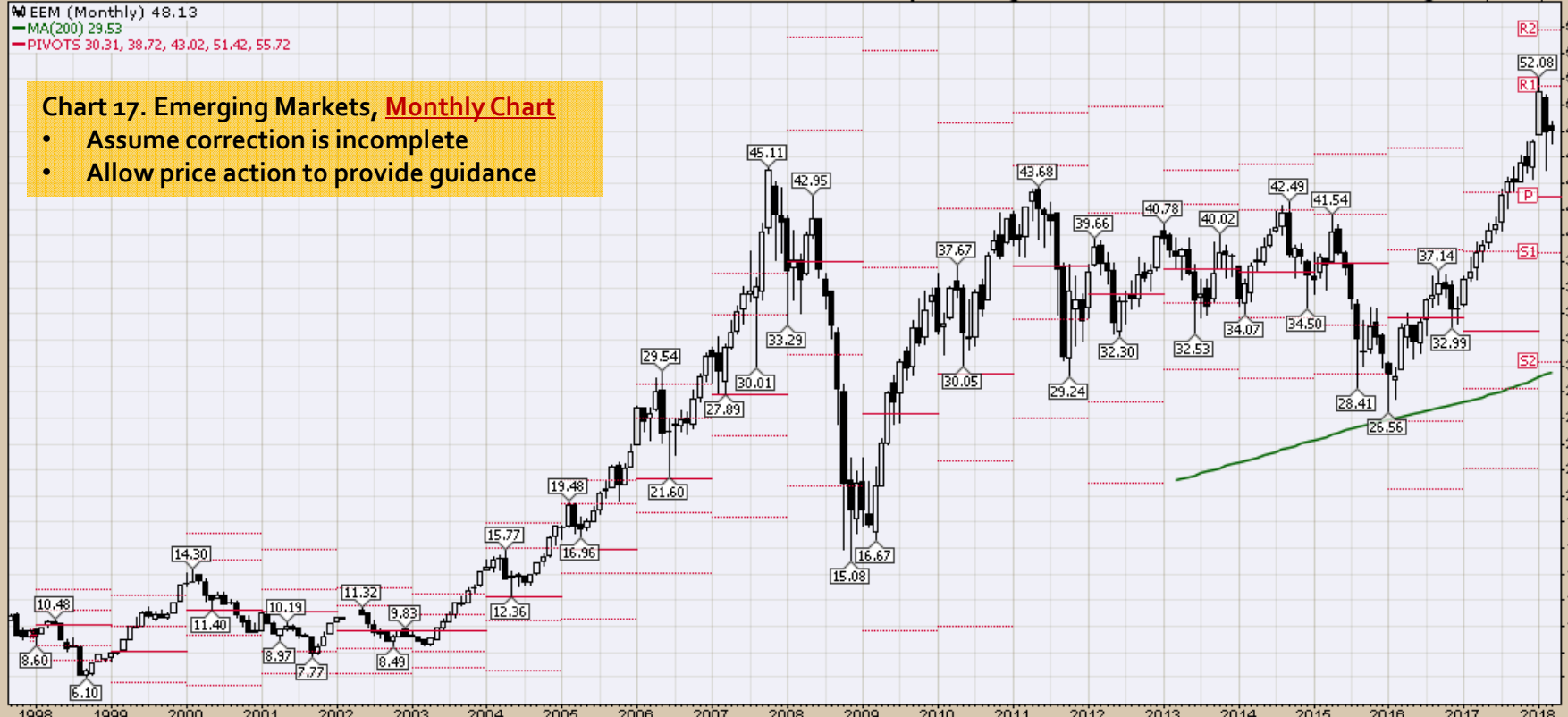
▲ EEM (Monthly) 48.13

— MA(200) 29.53

— PIVOTS 30.31, 38.72, 43.02, 51.42, 55.72

Chart 17. Emerging Markets, **Monthly Chart**

- Assume correction is incomplete
- Allow price action to provide guidance



2-Mar-2018

Open 22.81 High 22.92 Low 22.47 Close 22.74 Volume 5.2M Chg -0.08 (-0.35%)

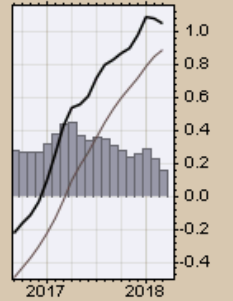
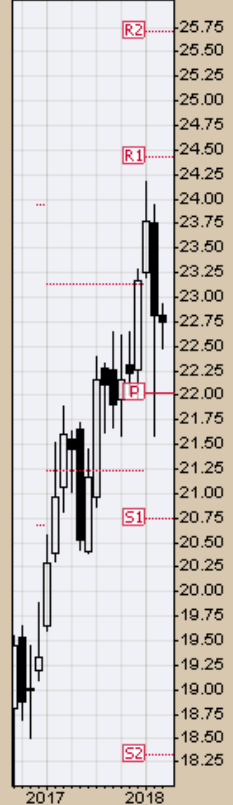
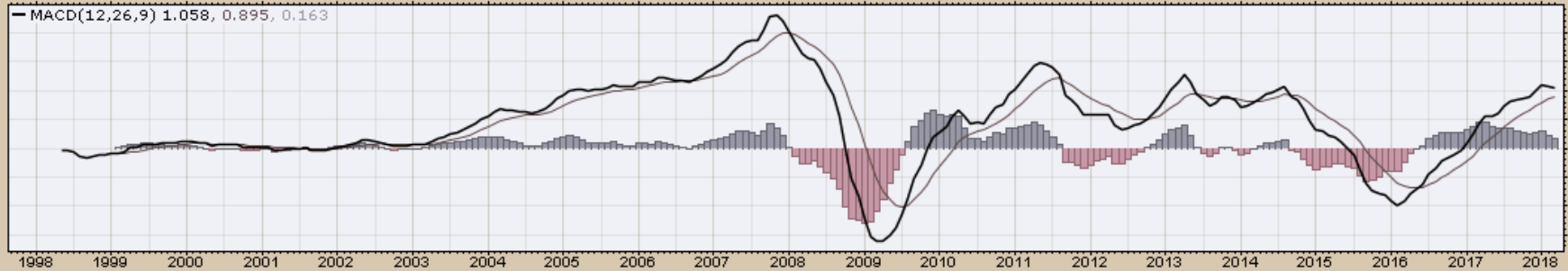
EWA (Monthly) 22.74

MA(200) 14.54

PIVOTS 18.33, 20.75, 22.02, 24.43, 25.70

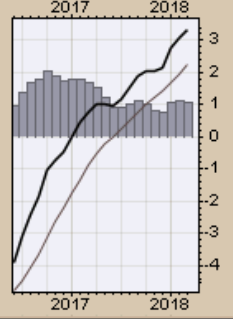
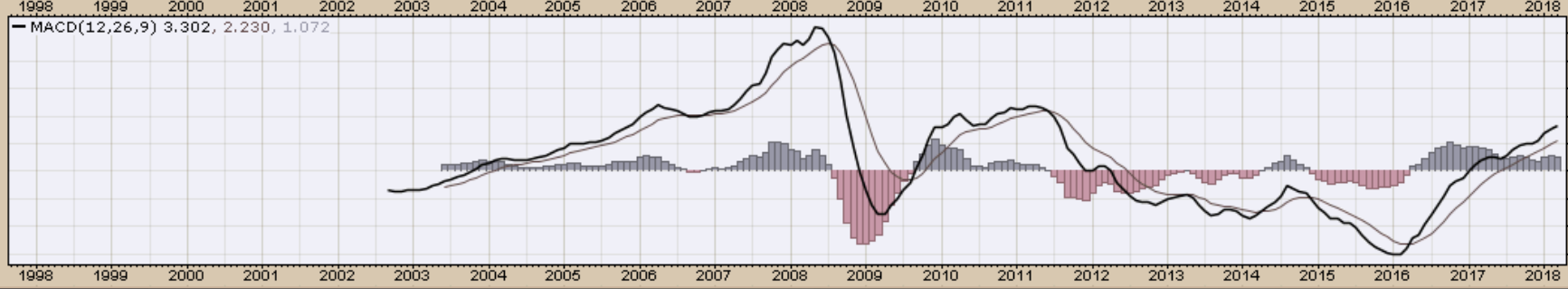
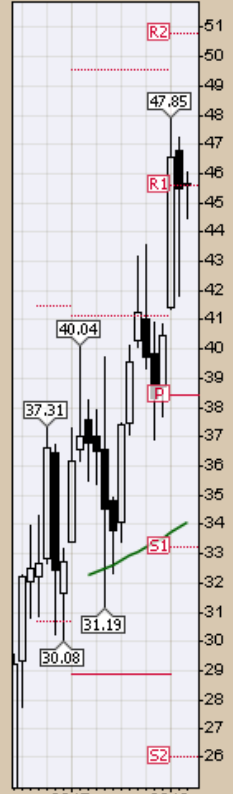
Chart 18. Australia, Monthly Chart

- Assume correction is incomplete



EWZ (Monthly) 45.60
MA(200) 34.11
PIVOTS 26.03, 33.24, 38.40, 45.61, 50.77

Chart 19. Brazil, Monthly Chart
• Assume correction is incomplete



EWC (Monthly) 27.48

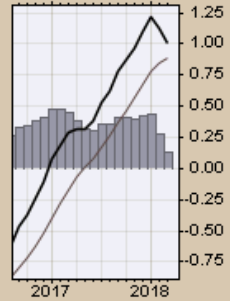
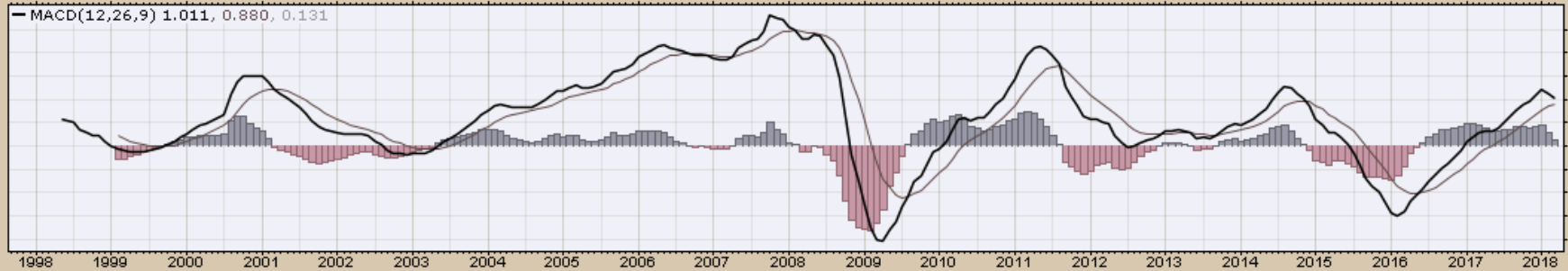
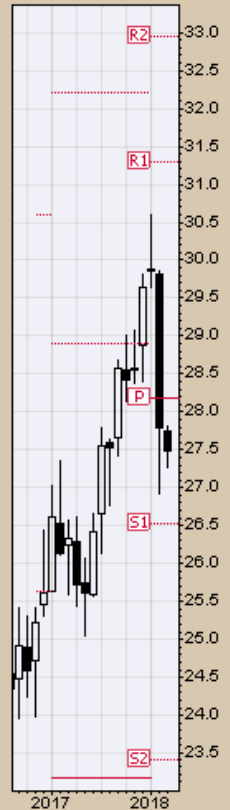
MA(200) 20.43

PIVOTS 23.40, 26.52, 28.17, 31.29, 32.94

Chart 20. Canada, Monthly Chart

1997 – March 5, 2018

- Assume correction is incomplete



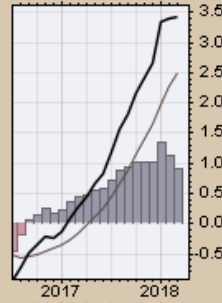
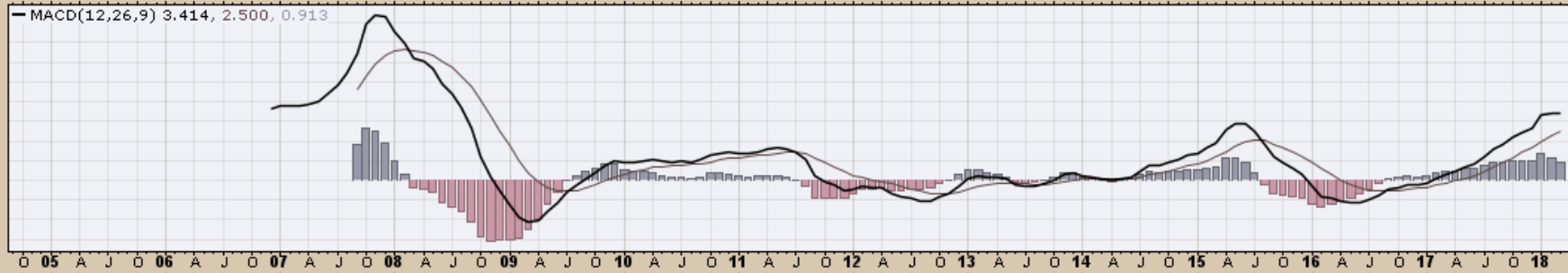
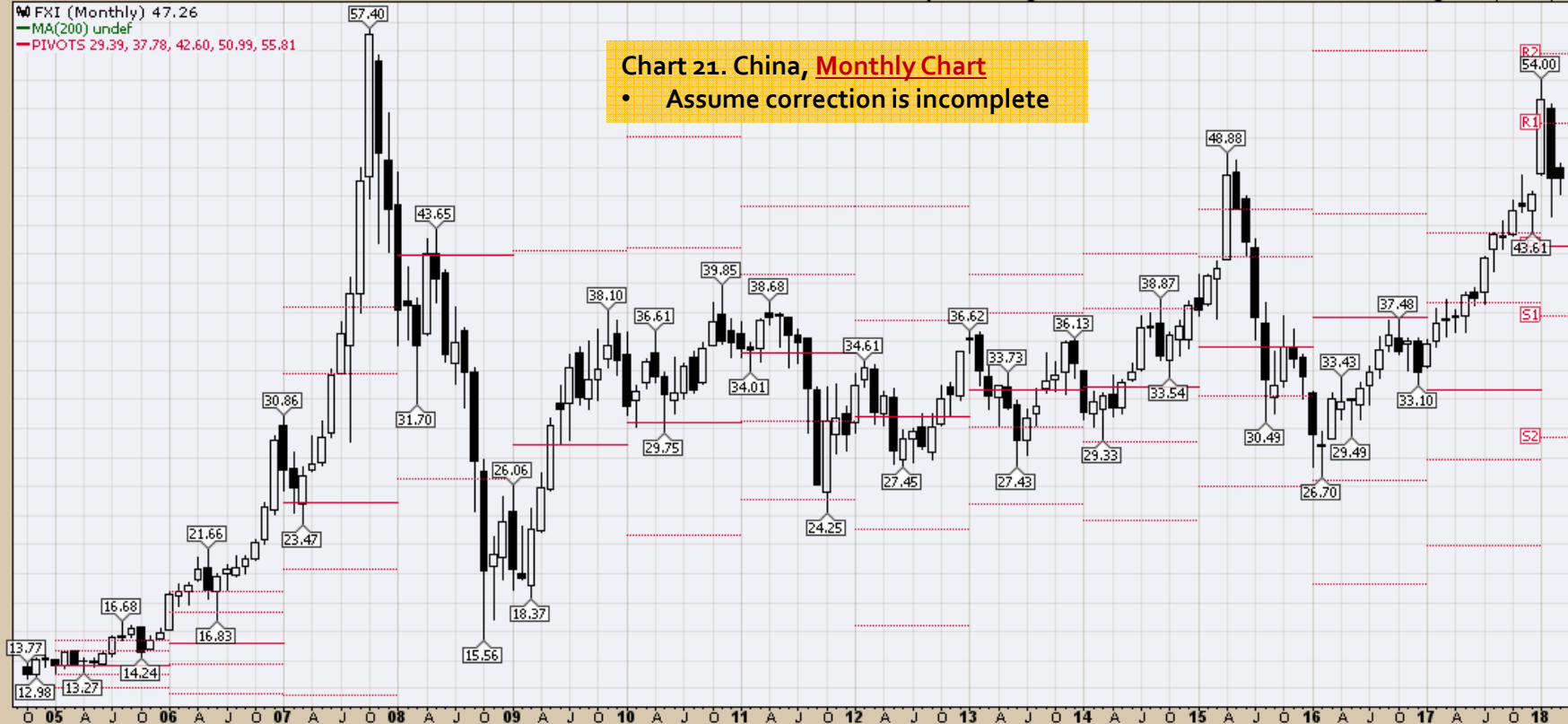
FXI iShares China Large-Cap ETF NYSE
2-Mar-2018

Open 47.96 High 48.24 Low 46.15 Close 47.26 Volume 66.6M Chg +0.04 (+0.08%)

© StockCharts.com

FXI (Monthly) 47.26
MA(200) undef
PIVOTS 29.39, 37.78, 42.60, 50.99, 55.81

Chart 21. China, Monthly Chart
• Assume correction is incomplete

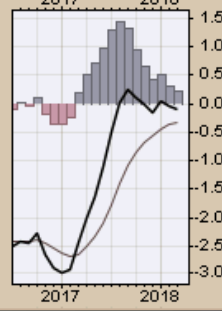
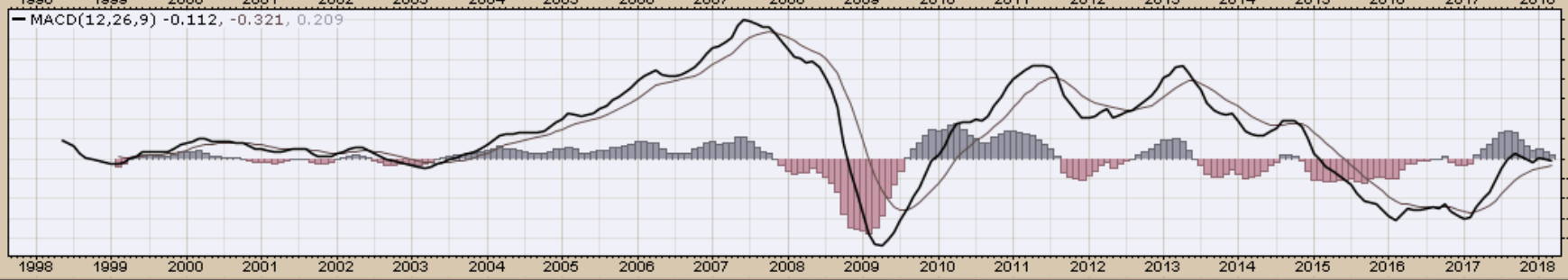
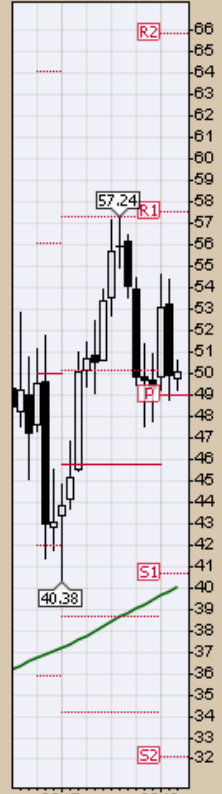


EW (Monthly) 50.11
 MA(200) 40.04
 PIVOTS 32.11, 40.70, 48.97, 57.56, 65.83

Open 49.81 High 50.63 Low 49.27 Close 50.11 Volume 8.6M Chg +0.20 (+0.40%) ▲

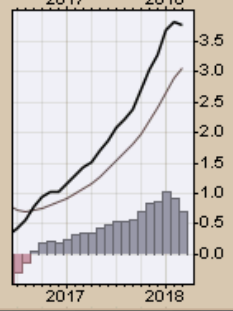
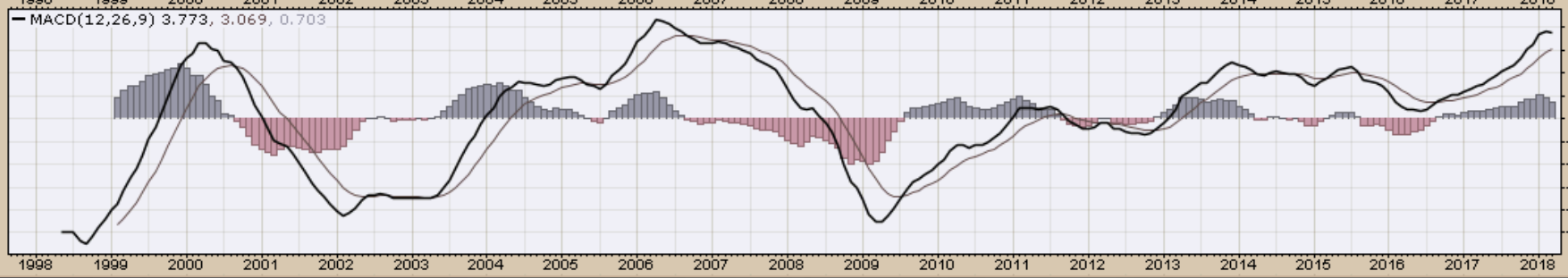
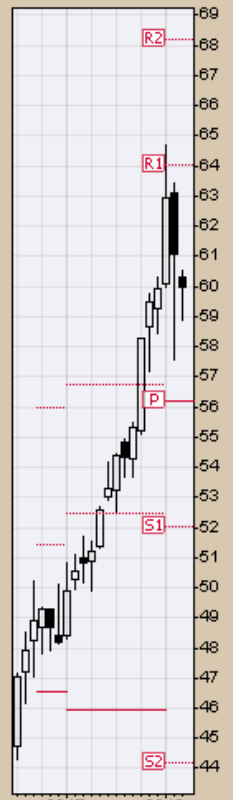
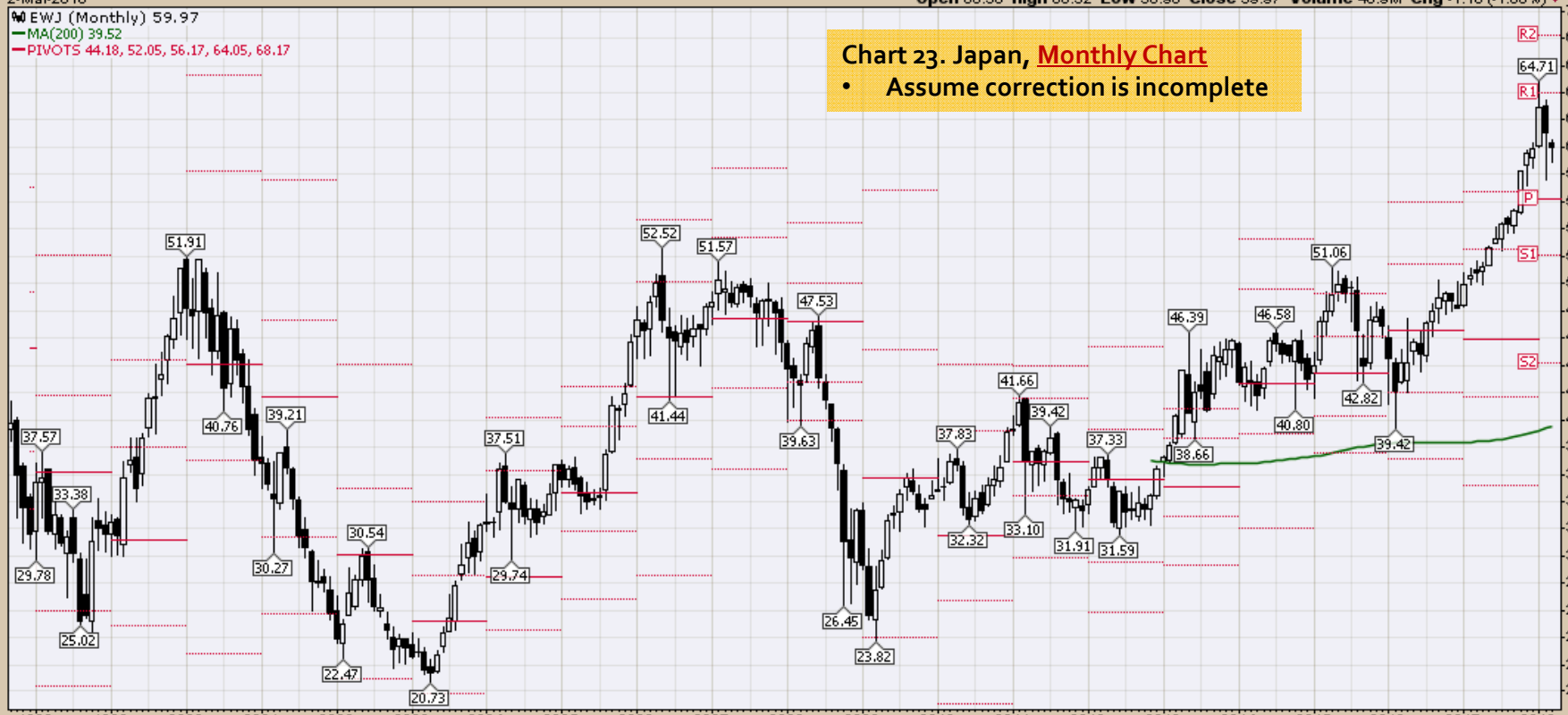
Chart 22. Mexico, Monthly Chart

- Assume correction is incomplete



EWJ (Monthly) 59.97
MA(200) 39.52
PIVOTS 44.18, 52.05, 56.17, 64.05, 68.17

Chart 23. Japan, Monthly Chart
• Assume correction is incomplete



RSX VanEck Vectors Russia ETF NYSE

2-Mar-2018

© StockCharts.com

Open 23.21 High 23.34 Low 22.63 Close 23.25 Volume 20.7M Chg +0.09 (+0.39%) ▲

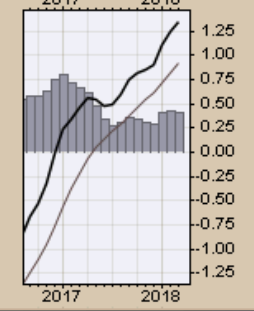
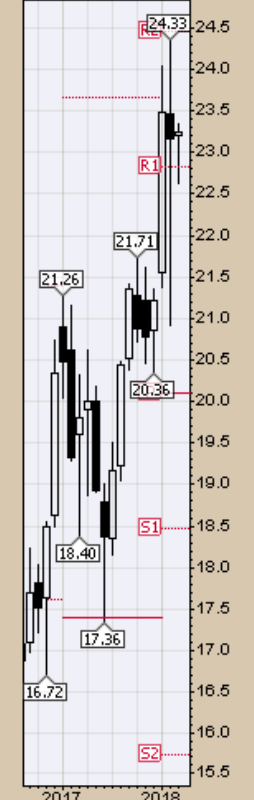
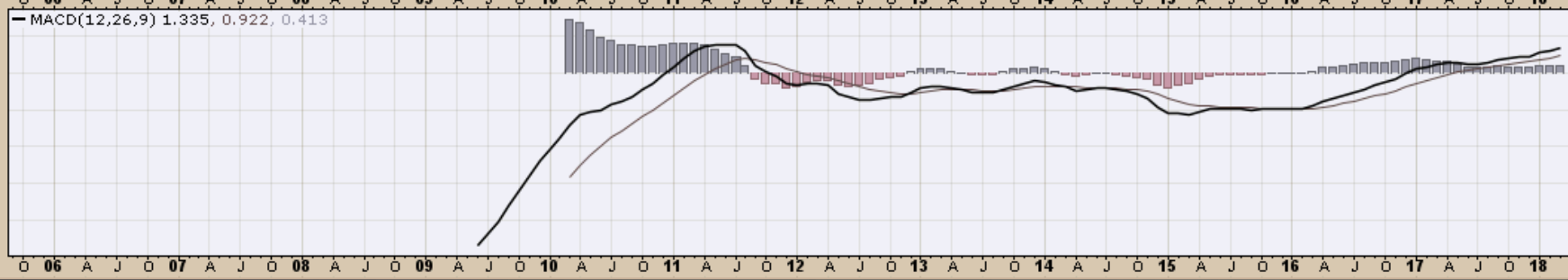
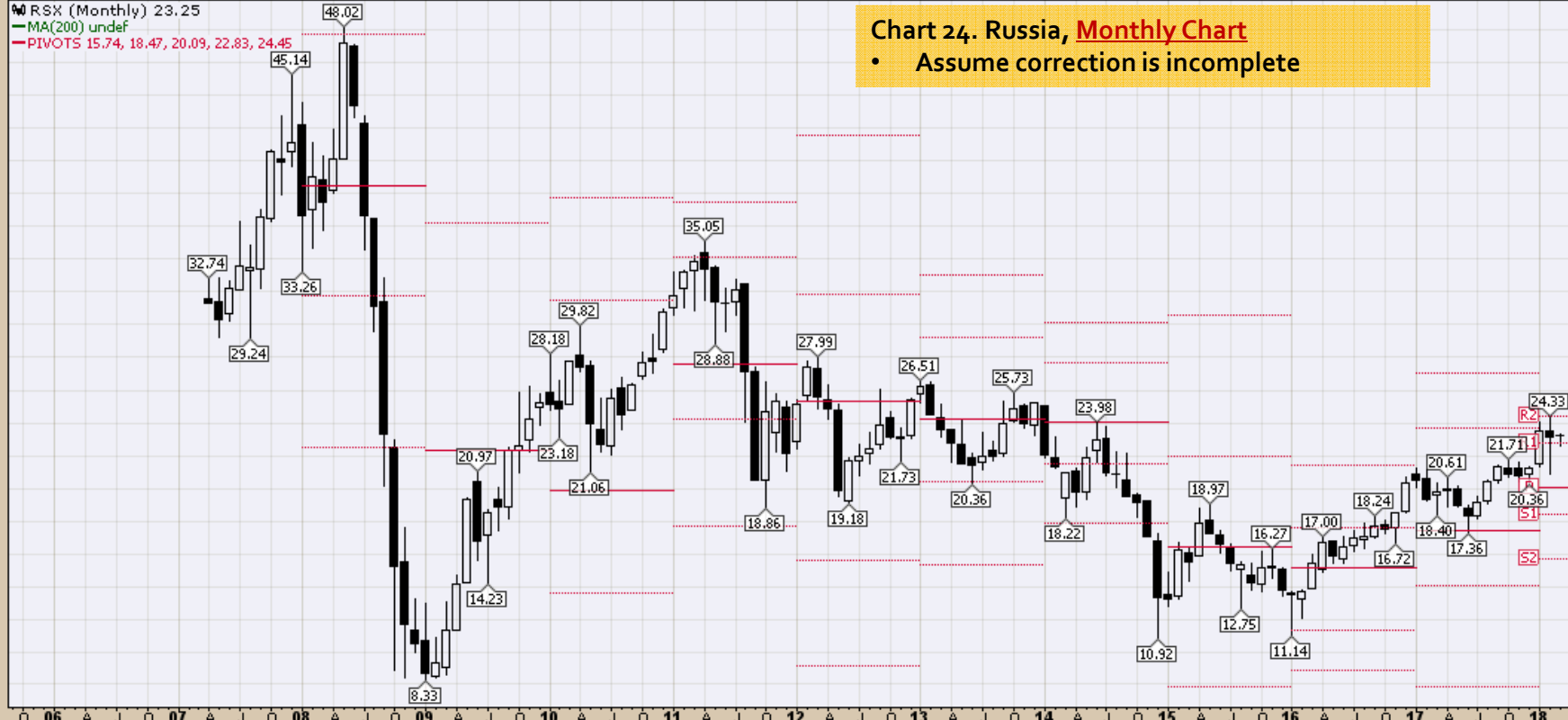
RSX (Monthly) 23.25

MA(200) undef

PIVOTS 15.74, 18.47, 20.09, 22.83, 24.45

Chart 24. Russia, **Monthly Chart**

- Assume correction is incomplete



INP iPath MSCI India Index ETN NYSE

2-Mar-2018

Open 84.18 High 84.26 Low 82.97 Close 84.22 Volume 6,348 Chg +0.64 (+0.77%) ▲

© StockCharts.com

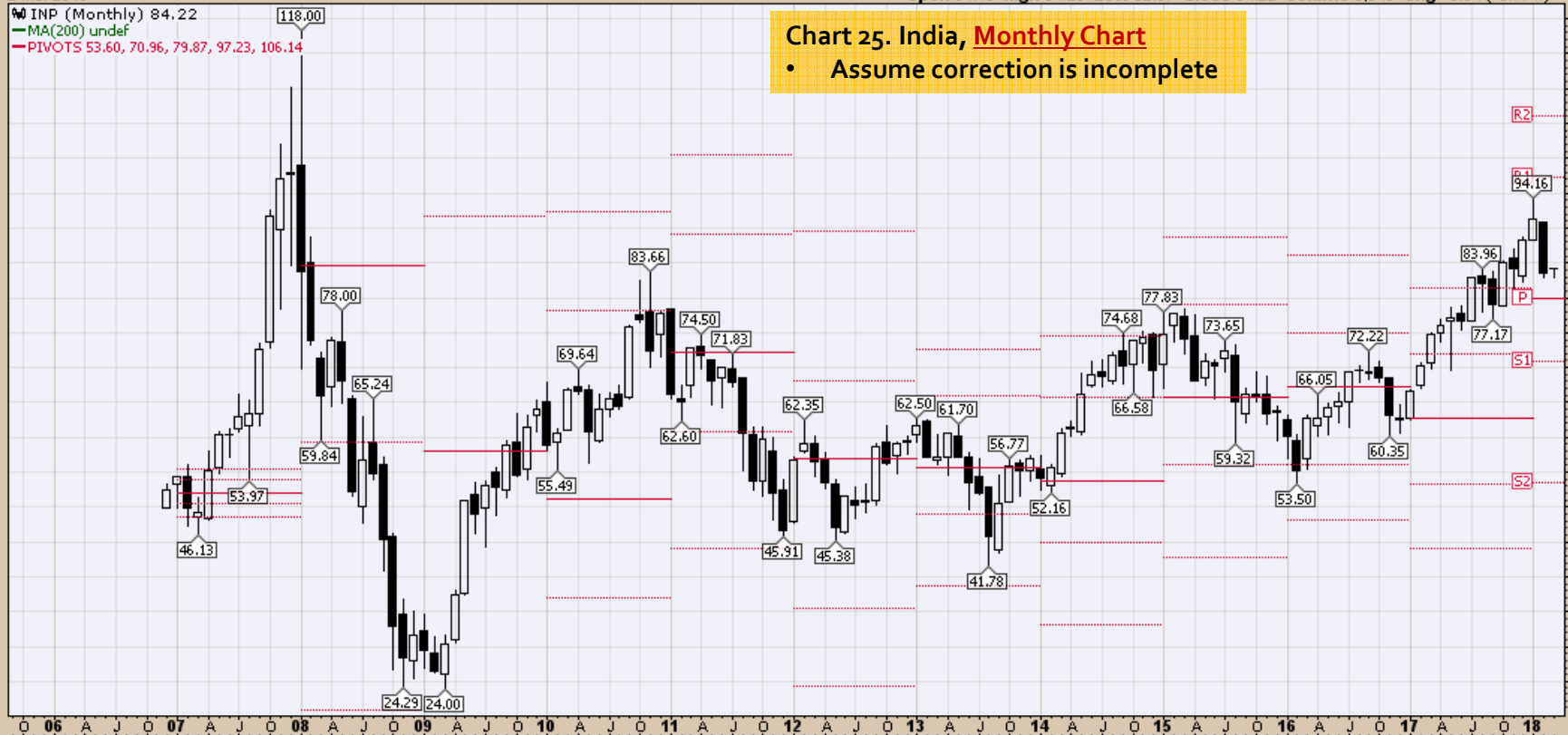
INP (Monthly) 84.22

MA(200) undef

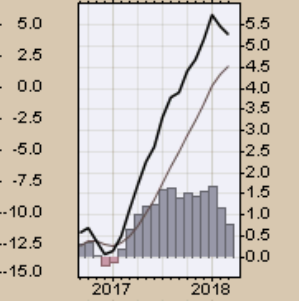
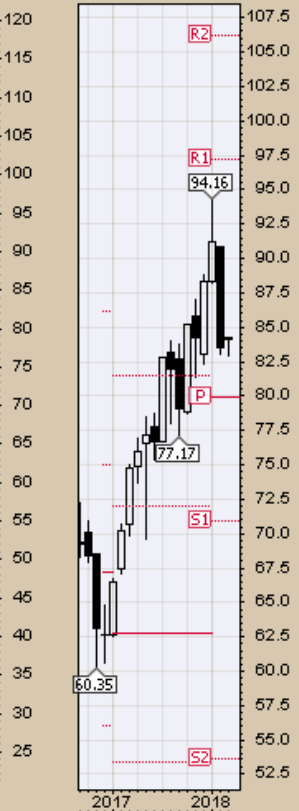
PIVOTS 53.60, 70.96, 79.87, 97.23, 106.14

Chart 25. India, Monthly Chart

- Assume correction is incomplete



MACD(12,26,9) 5.294, 4.530, 0.764



CRB Commodity Index
Weekly, Daily and Monthly Charts

\$CRB Reuters/Jefferies CRB Index (EOD) INDXX

© StockCharts.com

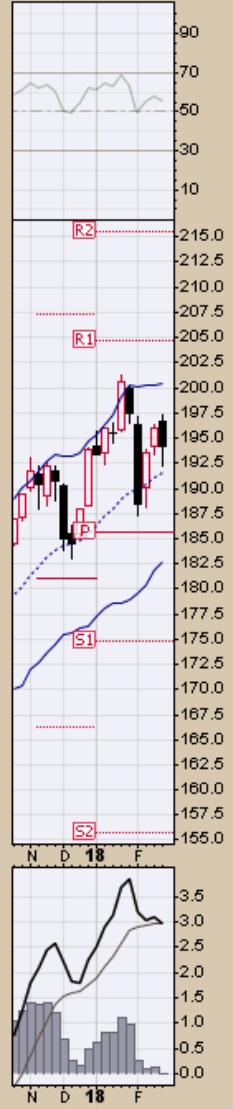
2-Mar-2018

Open 196.72 High 197.23 Low 192.19 Close 194.12 Chg -1.88 (-0.96%)

RSI(14) 55.14

\$CRB (Weekly) 194.12
BB(20,2,0) 182.76 - 191.59 - 200.41
PIVOTS 155.63, 174.78, 185.57, 204.66, 215.45
Volume undef

Chart 26. \$CRB Reuters/Jefferies CRB Index, Weekly Chart



\$CRB Reuters/Jefferies CRB Index (EOD) INDXX

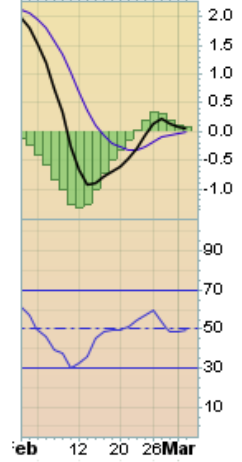
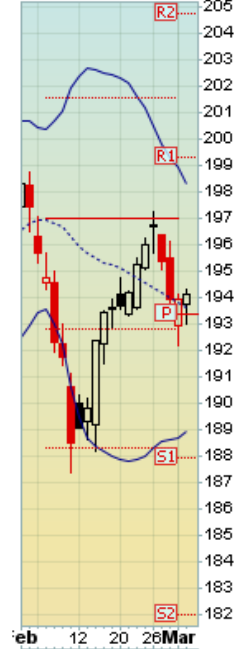
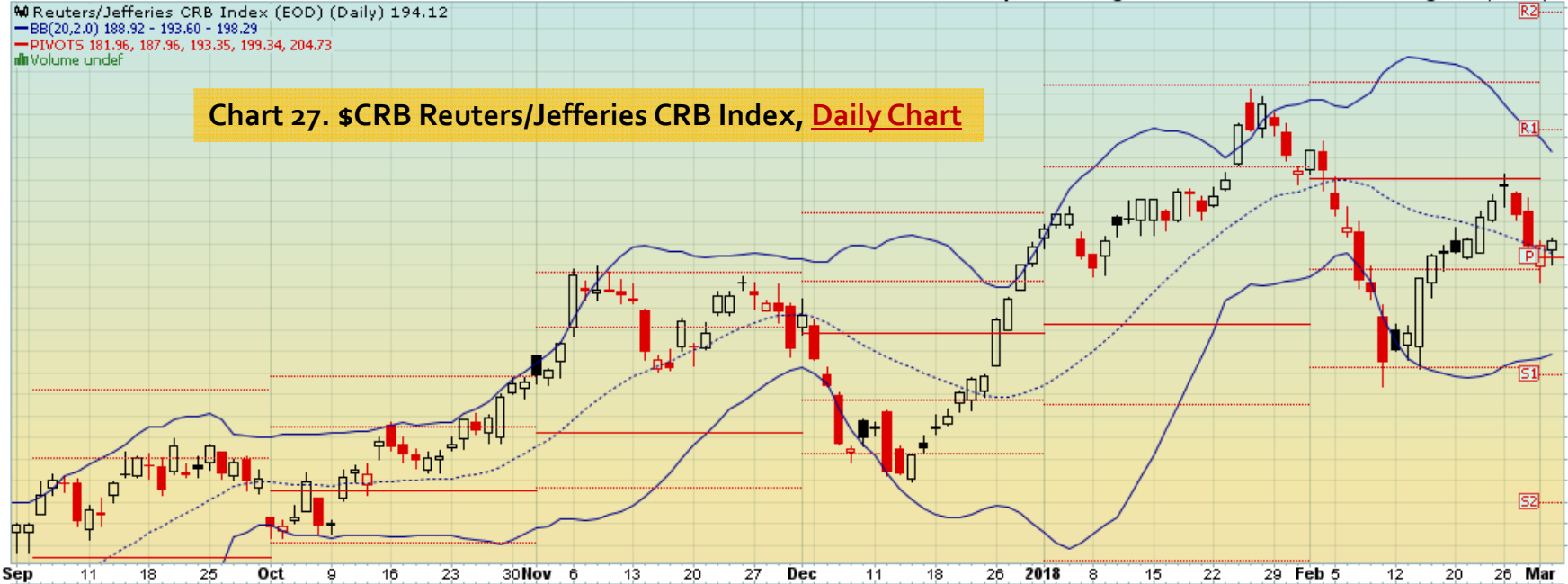
2-Mar-2018

© StockCharts.com

▮ Reuters/Jefferies CRB Index (EOD) (Daily) 194.12
— BB(20,2,0) 188.92 - 193.60 - 198.29
— PIVOTS 181.96, 187.96, 193.35, 199.34, 204.73
■ Volume undef

Open 193.75 High 194.30 Low 193.01 Close 194.12 Chg +0.17 (+0.09%) ▲

Chart 27. \$CRB Reuters/Jefferies CRB Index, Daily Chart



\$CRB Reuters/Jefferies CRB Index (EOD) INDXX

© StockCharts.com

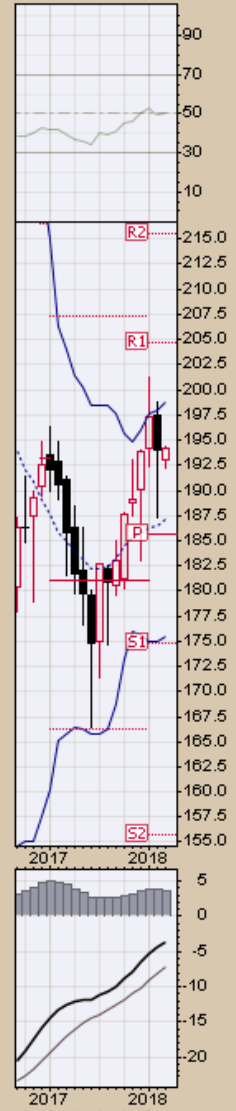
2-Mar-2018

Open 192.97 High 194.30 Low 192.19 Close 194.12 Chg +0.17 (+0.09%) ▲

▲ RSI(14) 50.12

● \$CRB (Monthly) 194.12
— BB(20,2,0) 175.42 - 187.10 - 198.79
— PIVOTS 155.63, 174.78, 185.57, 204.66, 215.45
■ Volume undef

Chart 28. \$CRB Reuters/Jefferies CRB Index, Monthly Chart



\$WTIC Light Crude Oil
Weekly, Daily and Monthly Charts

\$WTIC Light Crude Oil - Continuous Contract (EOD) CME
2-Mar-2018

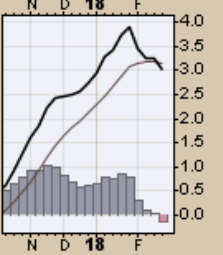
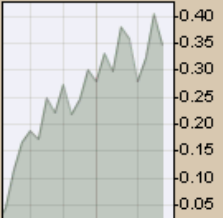
Open 63.60 High 64.24 Low 60.13 Close 61.25 Volume 3.2M Chg -2.30 (-3.62%)

© StockCharts.com

▲ CMF(20) 0.347

● \$WTIC (Weekly) 61.25
— BB(20,2,0) 52.15 - 59.60 - 67.05
— PIVOTS 35.87, 48.14, 54.33, 66.60, 72.79
■ Volume 3.21M, EMA(50) 3.10M

Chart 29. \$WTIC, Weekly Chart



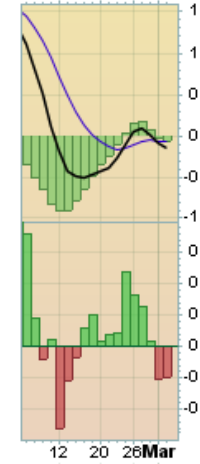
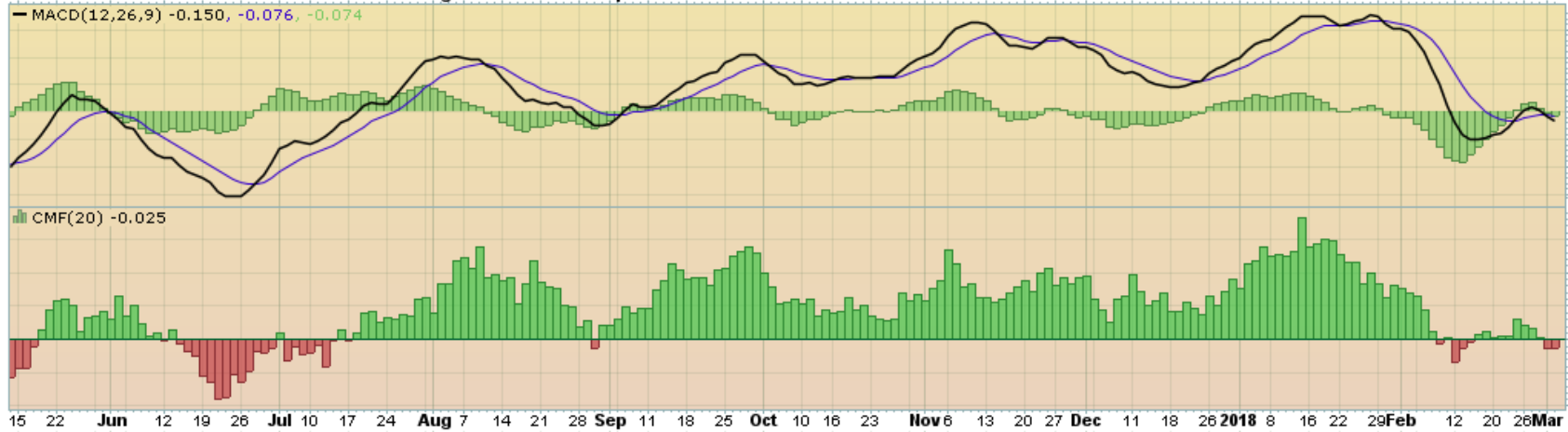
\$WTIC Light Crude Oil - Continuous Contract (EOD) CME
2-Mar-2018

Open 61.34 High 61.60 Low 60.13 Close 61.25 Volume 611.3K Chg +0.26 (+0.43%)

© StockCharts.com

Light Crude Oil - Continuous Contract (EOD) (Daily) 61.25
BB(20,2.0) 58.58 - 61.88 - 65.17
PIVOTS 53.77, 57.71, 62.00, 65.94, 70.23
Volume 611,315

Chart 30. \$WTIC, Daily Chart



\$WTIC Light Crude Oil - Continuous Contract (EOD) CME

© StockCharts.com

2-Mar-2018

Open 61.55 High 61.83 Low 60.13 Close 61.25 Volume 1.4M Chg -0.39 (-0.63%)

▲ CMF(20) 0.243 (28 Feb)

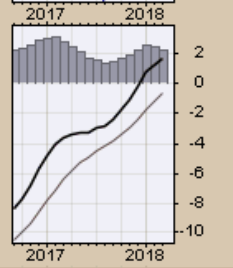
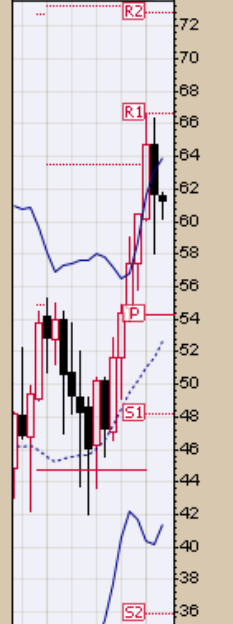
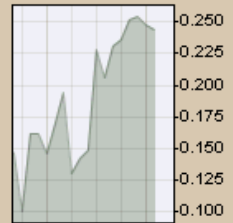
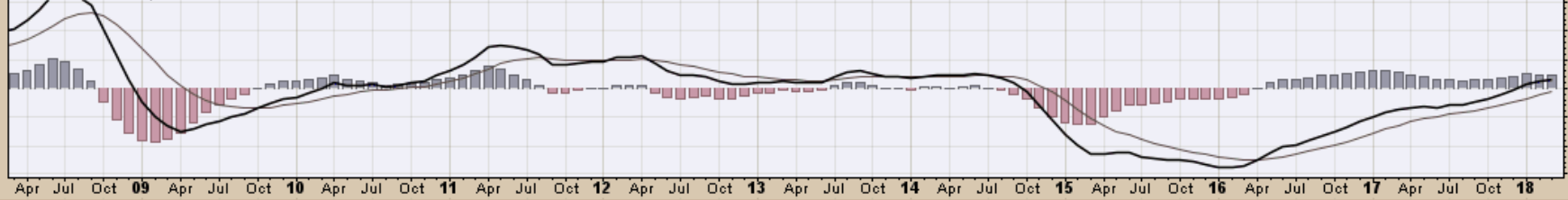


● \$WTIC (Monthly) 61.25
 — BB(20,2,0) 41.42 - 52.65 - 63.88
 — PIVOTS 35.87, 48.14, 54.33, 66.60, 72.79

Chart 31. \$WTIC, Monthly Chart



— MACD(12,26,9) 1.615, -0.614, 2.229



Soybeans
Weekly, Daily and Monthly Charts

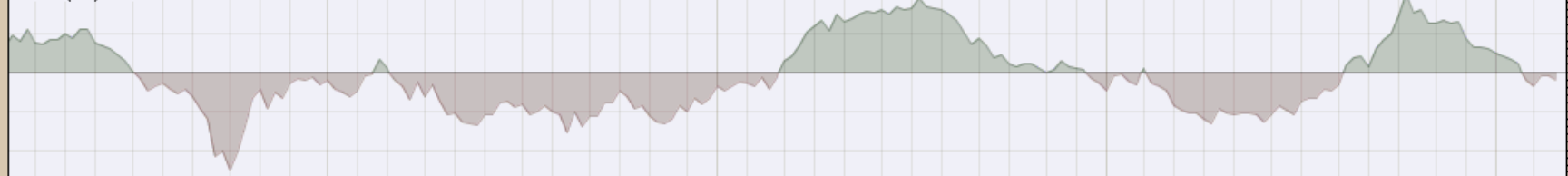
\$SOYB Soybeans - Continuous Contract (EOD) CME

© StockCharts.com

2-Mar-2018

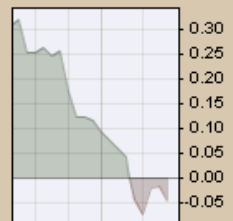
Open 1054.00 High 1082.50 Low 1043.75 Close 1071.00 Volume 788.7K Chg +23.50 (+2.24%) ▲

▲ CMF(20) -0.045

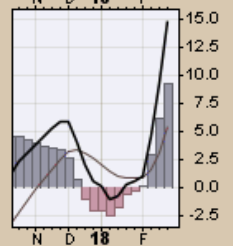
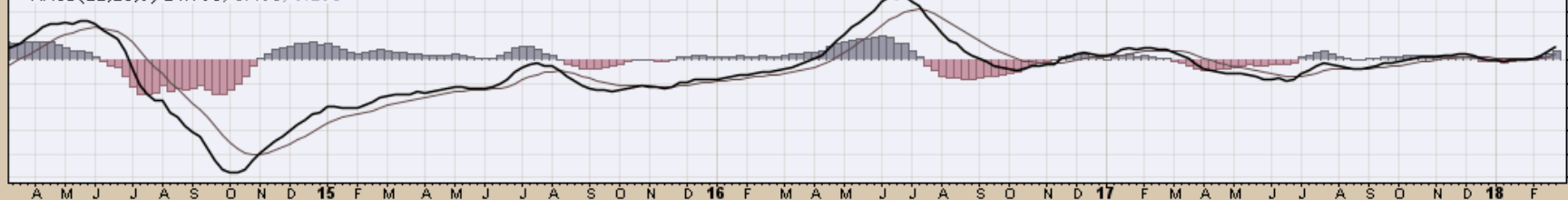


\$SOYB (Weekly) 1071.00
BB(20,2,0) 935.10 - 989.59 - 1044.07
PIVOTS 800.92, 881.33, 980.67, 1061.08, 1160.42

Chart 32. Soybeans, Weekly Chart



MACD(12,26,9) 14.790, 5.495, 9.295



\$SOYB Soybeans - Continuous Contract (EOD) CME

2-Mar-2018

Open 1067.75 High 1082.50 Low 1063.75 Close 1071.00 Volume 164.3K Chg +3.00 (+0.28%) ▲

© StockCharts.com

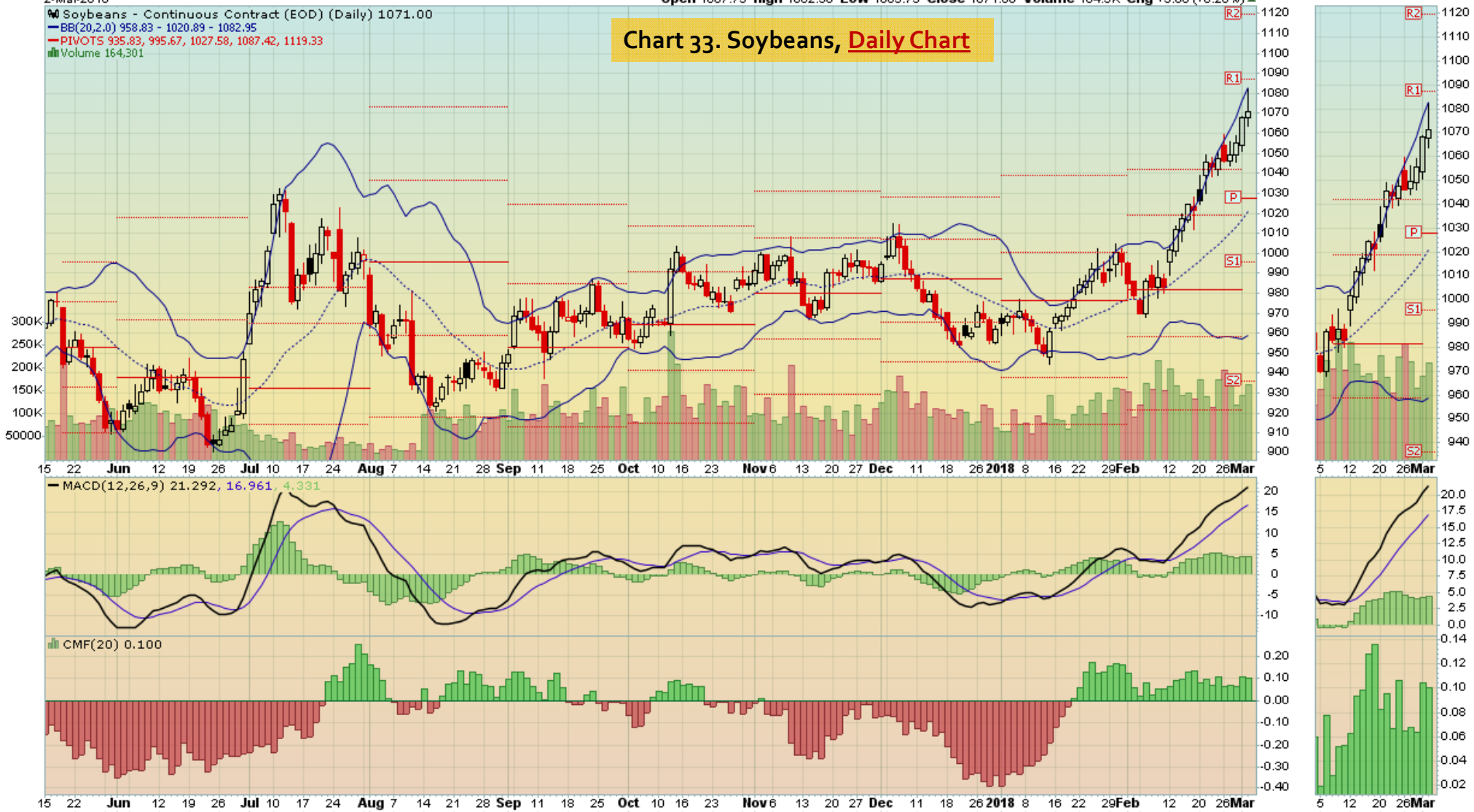
☒ Soybeans - Continuous Contract (EOD) (Daily) 1071.00

— BB(20,2.0) 958.83 - 1020.89 - 1082.95

— PIVOTS 935.83, 995.67, 1027.58, 1087.42, 1119.33

■ Volume 164,301

Chart 33. Soybeans, Daily Chart



\$SOYB Soybeans - Continuous Contract (EOD) CME

© StockCharts.com

2-Mar-2018

Open 1053.75 High 1082.50 Low 1050.75 Close 1071.00 Volume 306.1K Chg +15.50 (+1.47%) ▲

▲ CMF(20) -0.044 (28 Feb)

\$SOYB (Monthly) 1071.00
BB(20,2,0) 904.75 - 986.90 - 1069.05
PIVOTS 800.92, 881.33, 980.67, 1061.08, 1160.42

Chart 34. Soybeans, Monthly Chart



Corn
Weekly, Daily and Monthly Charts

\$CORN Corn - Continuous Contract (EOD) CME
2-Mar-2018

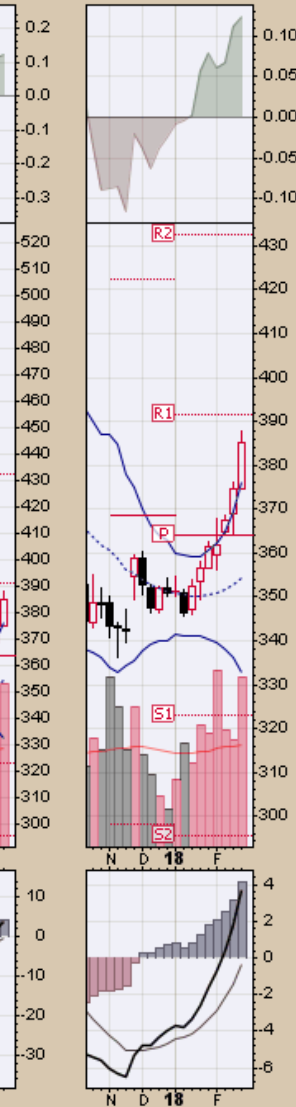
© StockCharts.com

Open 374.75 High 388.00 Low 374.75 Close 385.25 Volume 1.4M Chg +10.75 (+2.87%) ▲

▲ CMF(20) 0.123

📉 \$CORN (Weekly) 385.25
— BB(20,2,0) 332.68 - 354.46 - 376.24
— PIVOTS 295.42, 323.08, 363.92, 391.58, 432.42
📊 Volume 1.40M, EMA(50) 850.19K

Chart 35. Corn, Weekly Chart



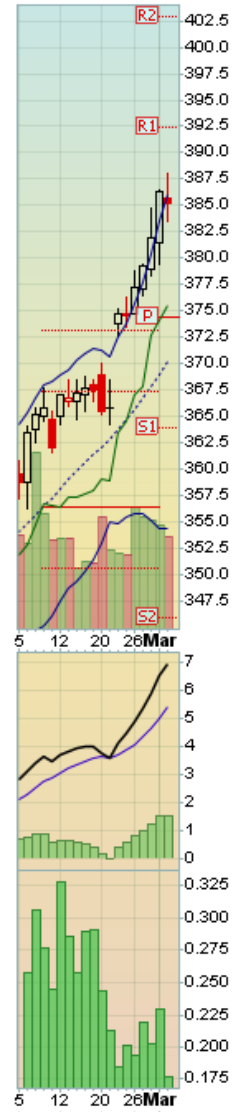
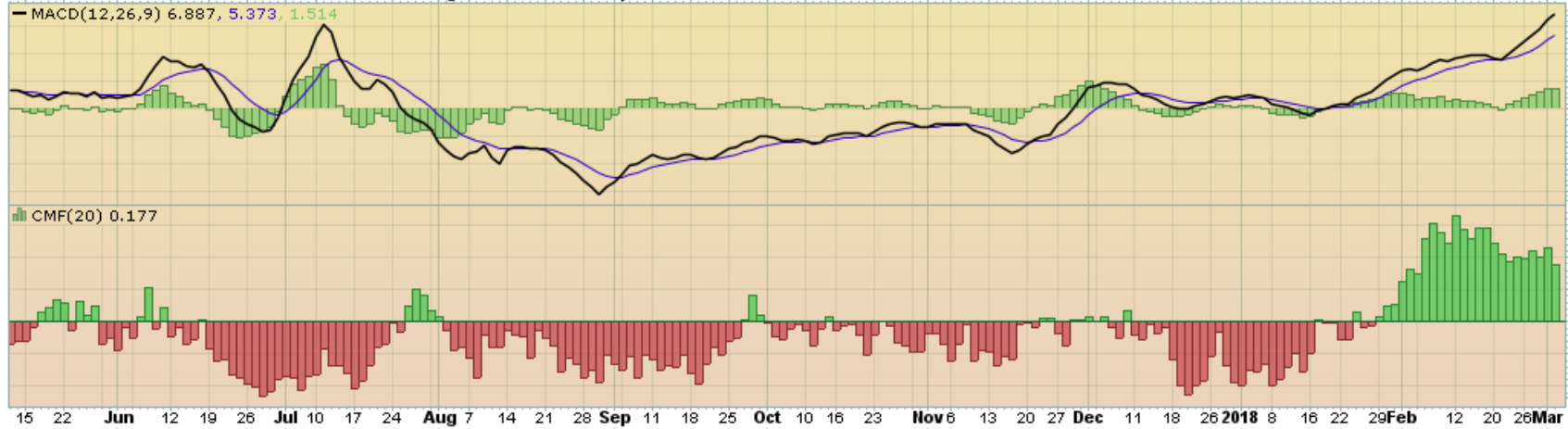
\$CORN Corn - Continuous Contract (EOD) CME
2-Mar-2018

Open 385.75 High 388.00 Low 383.50 Close 385.25 Volume 239.6K Chg -1.00 (-0.26%)

© StockCharts.com



Chart 36. Corn, Daily Chart



\$CORN Corn - Continuous Contract (EOD) CME

© StockCharts.com

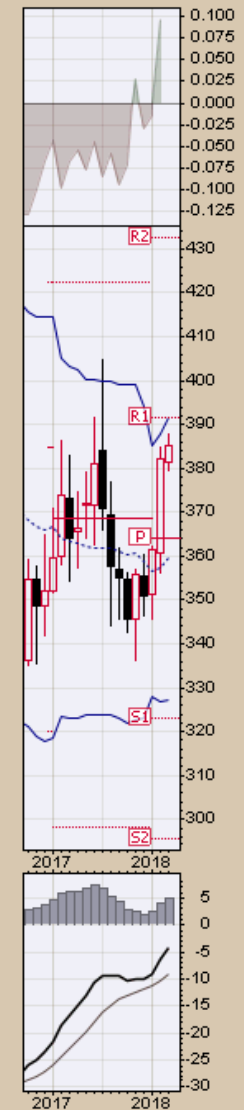
2-Mar-2018

Open 381.50 High 388.00 Low 379.50 Close 385.25 Volume 510.2K Chg +3.25 (+0.85%)

▲ CMF(20) 0.095 (28 Feb)

● \$CORN (Monthly) 385.25
— BB(20,2,0) 327.39 - 359.48 - 391.56
— PIVOTS 295.42, 323.08, 363.92, 391.58, 432.42

Chart 37. Corn, **Monthly Chart**



Rice
Quarterly and Daily Charts

Rough Rice May '18 (ZRK18) - Barchart.com

Rough Rice, 30 year



Rough Rice May '18 (ZRK18) - Barchart.com

Chart 38. Rough Rice
Weekly Chart, 5 year

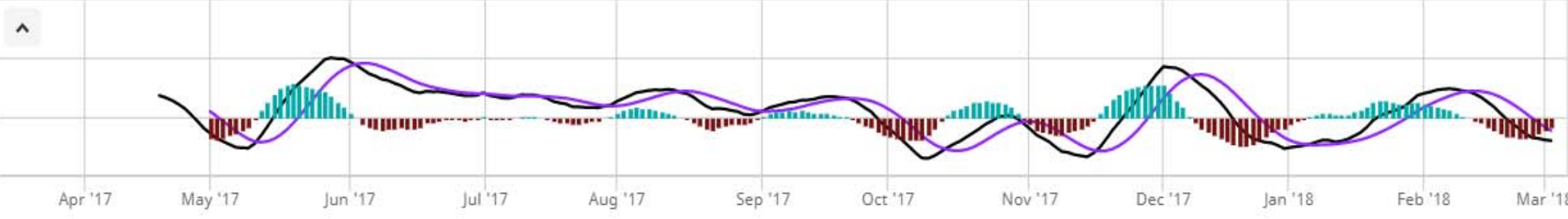


Rough Rice May '18 (ZRK18) - Barchart.com



Chart 39. Rough Rice
Daily Chart, 1 year

13.500
13.000
12.465
12.000
11.500
11.000
10.500
10.000
0.500
0.000
-0.085
-0.200
-0.500



Cotton
Weekly, Daily and Monthly Charts

\$COTTON Cotton - Continuous Contract (EOD) ICE
2-Mar-2018

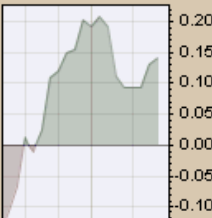
© StockCharts.com

Open 81.34 High 83.06 Low 80.67 Close 82.09 Volume 94.9K Chg +0.75 (+0.92%) ▲

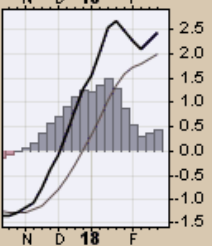
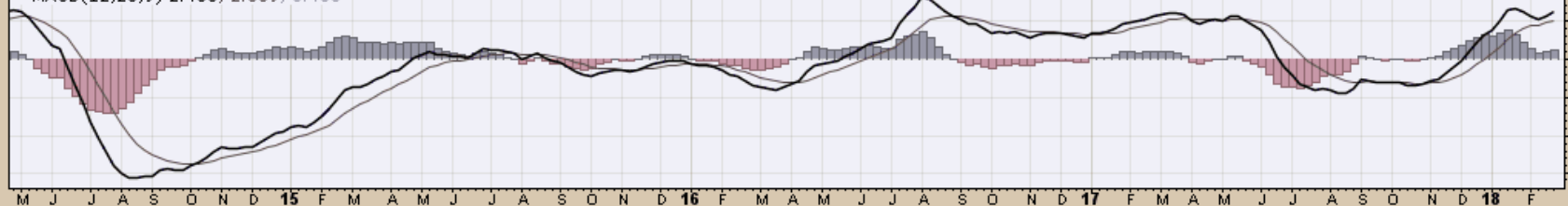
▲ CMF(20) 0.141

📉 \$COTTON (Weekly) 82.09
— BB(20,2,0) 65.52 - 75.59 - 85.65
— PIVOTS 56.29, 67.46, 77.32, 88.49, 98.35
■ Volume 94.88K, EMA(50) 94.44K

Chart 40. Cotton, Weekly Chart



— MACD(12,26,9) 2.458, 2.009, 0.450



\$COTTON Cotton - Continuous Contract (EOD) ICE

2-Mar-2018

☒ Cotton - Continuous Contract (EOD) (Daily) 82.09

— BB(20,2,0) 74.03 - 78.82 - 83.61

— PIVOTS 73.26, 78.10, 80.57, 85.41, 87.88

■ Volume 12,743

Open 81.53 High 82.22 Low 81.10 Close 82.09 Volume 12.7K Chg +0.28 (+0.34%) ▲

© StockCharts.com

Chart 41. Cotton, Daily Chart



\$COTTON Cotton - Continuous Contract (EOD) ICE

© StockCharts.com

2-Mar-2018

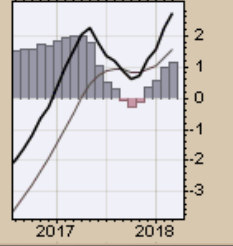
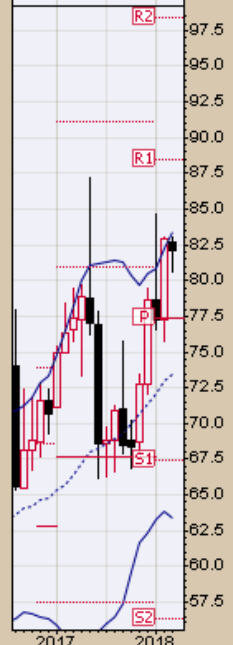
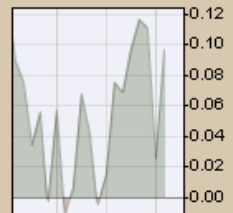
Open 82.71 High 83.06 Low 80.67 Close 82.09 Volume 40.0K Chg -0.84 (-1.01%)

▲ CMF(20) 0.097 (28 Feb)

☞ \$COTTON (Monthly) 82.09
— BB(20,2,0) 63.42 - 73.41 - 83.40
— PIVOTS 56.29, 67.46, 77.32, 88.49, 98.35

Chart 42. Cotton, Monthly Chart

— MACD(12,26,9) 2.703, 1.574, 1.129



Wheat
Weekly, Daily and Monthly Charts

\$WHEAT Wheat - Continuous Contract (EOD) CME

2-Mar-2018

© StockCharts.com

Open 469.75 High 518.50 Low 467.75 Close 500.00 Volume 581.9K Chg +35.75 (+7.70%)

▲ CMF(20) 0.073

W \$WHEAT (Weekly) 500.00
BB(20,2,0) 398.40 - 436.64 - 474.87
PIVOTS 299.00, 363.00, 468.75, 532.75, 638.50
Volume 581.93K, EMA(50) 356.20K

Chart 43. Wheat, Weekly Chart



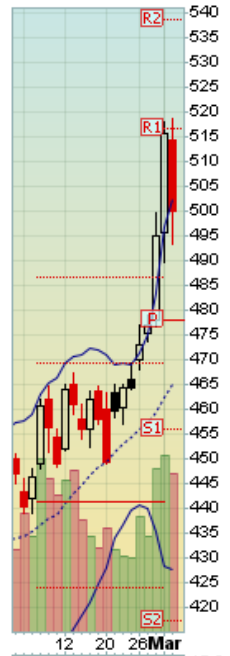
\$WHEAT Wheat - Continuous Contract (EOD) CME
2-Mar-2018

© StockCharts.com

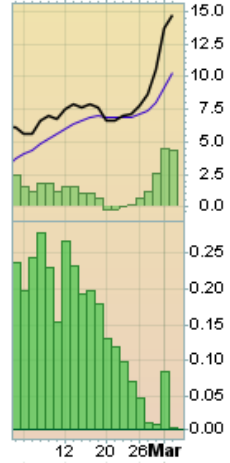
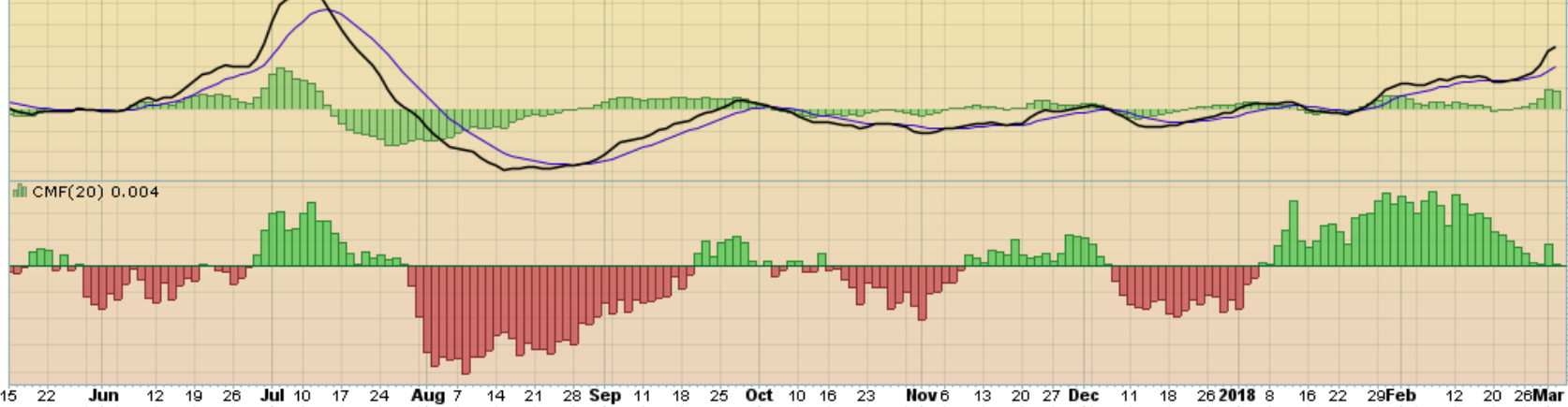
Open 514.25 High 518.50 Low 493.25 Close 500.00 Volume 130.3K Chg -15.50 (-3.01%)

Wheat - Continuous Contract (EOD) (Daily) 500.00
BB(20,2.0) 427.47 - 464.83 - 502.18
PIVOTS 417.00, 456.00, 477.75, 516.75, 538.50
Volume 130,285

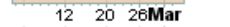
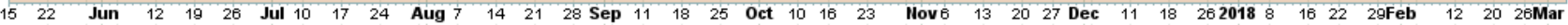
Chart 44. Wheat, **Daily Chart**



MACD(12,26,9) 14.669, 10.273, 4.396



CMF(20) 0.004



\$WHEAT Wheat - Continuous Contract (EOD) CME

2-Mar-2018

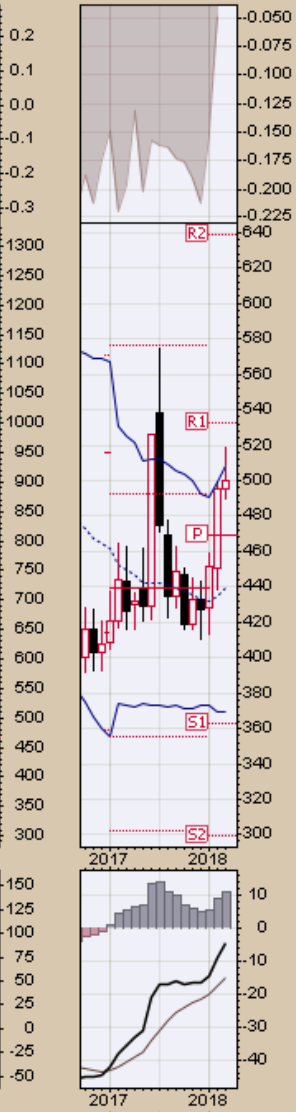
Open 495.50 High 518.50 Low 489.50 Close 500.00 Volume 274.6K Chg +5.00 (+1.01%) ▲

© StockCharts.com

▲ CMF(20) -0.049 (28 Feb)

☞ \$WHEAT (Monthly) 500.00
— BB(20,2,0) 369.71 - 438.91 - 508.11
— PIVOTS 299.00, 363.00, 468.75, 532.75, 638.50

Chart 45. Wheat, Monthly Chart



S&P Sectors

Chart Book Index

Market Price Considerations for Week Beginning March 5, 2018

Chart Book Index - Sectors

- Chart 46. Financial Sector, Weekly Chart
- Chart 47. Health Care Sector, Weekly Chart
- Chart 48. Technology Sector, Weekly Chart
- Chart 49. Industrial Sector, Weekly Chart
- Chart 50. Materials Sector, Weekly Chart
- Chart 51. Energy Sector, Weekly Chart
- Chart 52. Utilities Sector, Weekly Chart
- Chart 53. Consumer Staples, Weekly Chart
- Chart 54. Consumer Discretionary, Weekly Chart

XLFFinancial Select Sector SPDR Fund NYSE

2-Mar-2018

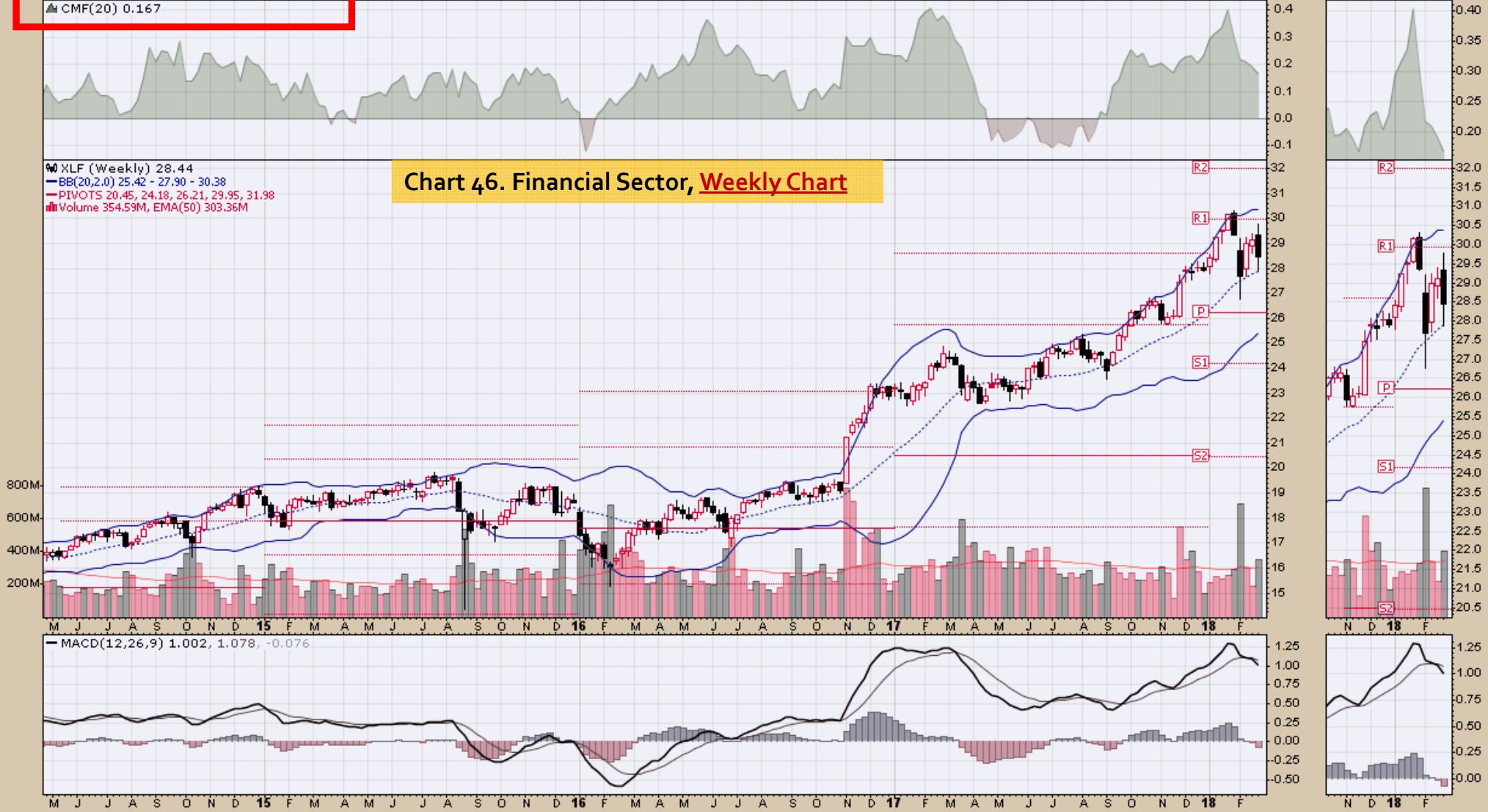
▲ CMF(20) 0.167

Open 29.33 High 29.77 Low 27.89 Close 28.44 Volume 354.6M Chg -0.68 (-2.34%)

© StockCharts.com

Chart 46. Financial Sector, Weekly Chart

● XLFF (Weekly) 28.44
— BB(20,2.0) 25.42 - 27.90 - 30.38
— PIVOTS 20.45, 24.18, 26.21, 29.95, 31.98
■ Volume 354.59M, EMA(50) 303.36M



XLV Health Care Select Sector SPDR Fund NYSE

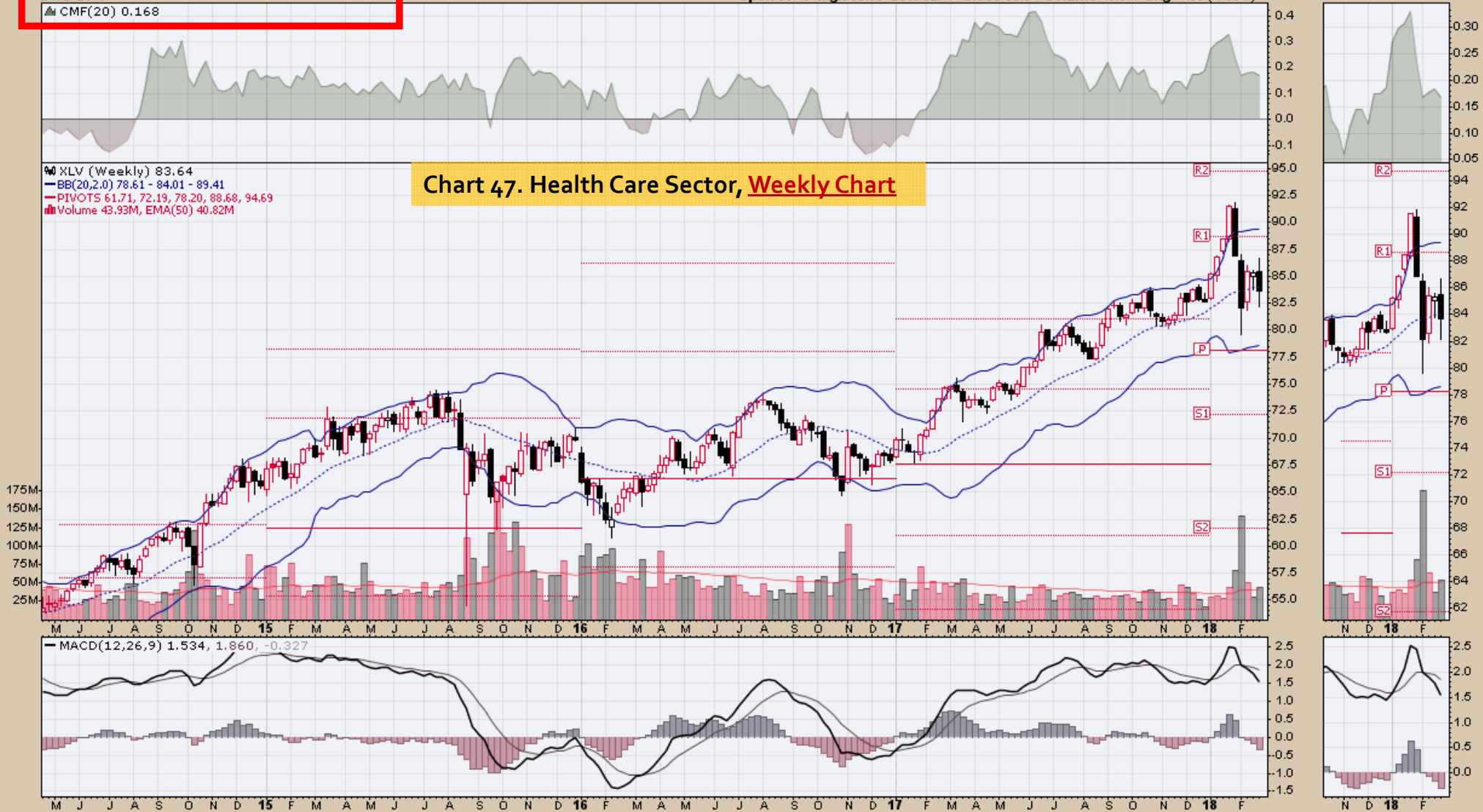
2-Mar-2018

▲ CMF(20) 0.168

© StockCharts.com
Open 85.48 High 86.69 Low 82.17 Close 83.64 Volume 43.9M Chg -1.69 (-1.98%) ▼

Chart 47. Health Care Sector, Weekly Chart

▲ XLV (Weekly) 83.64
— BB(20,2,0) 78.61 - 84.01 - 89.41
— PIVOTS 61.71, 72.19, 78.20, 88.68, 94.69
■ Volume 43.93M, EMA(50) 40.82M



XLK Technology Select Sector SPDR Fund NYSE

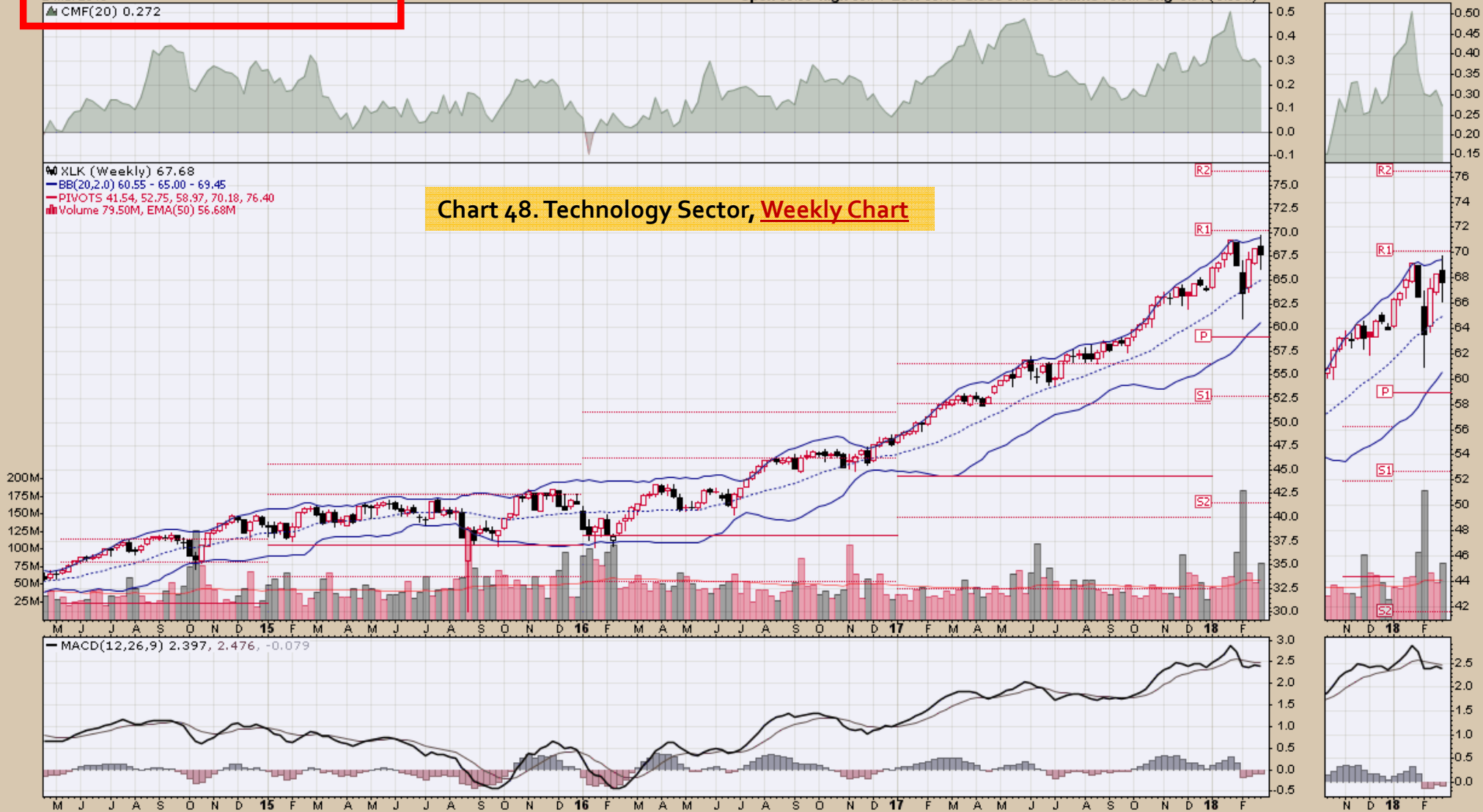
2-Mar-2018

▲ CMF(20) 0.272

© StockCharts.com
Open 68.58 High 69.71 Low 66.10 Close 67.68 Volume 79.5M Chg -0.61 (-0.89%) ▼

Chart 48. Technology Sector, Weekly Chart

● XLK (Weekly) 67.68
— BB(20,2.0) 60.55 - 65.00 - 69.45
— PIVOTS 41.54, 52.75, 58.97, 70.18, 76.40
■ Volume 79.50M, EMA(50) 56.68M

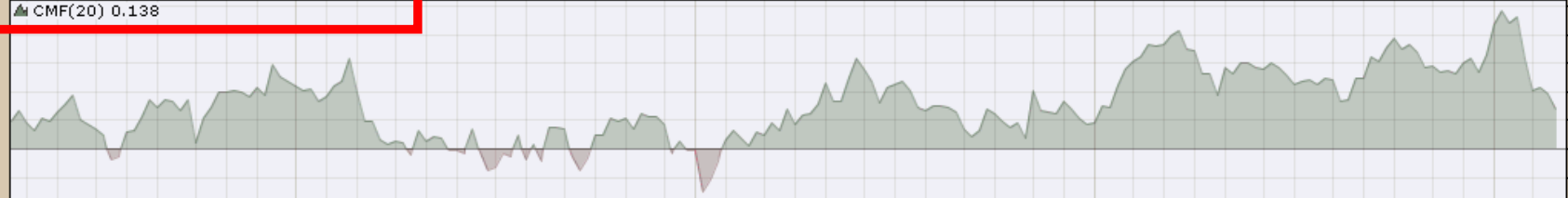


XLI Industrial Select Sector SPDR Fund NYSE

2-Mar-2018

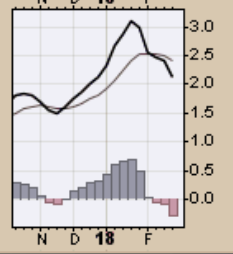
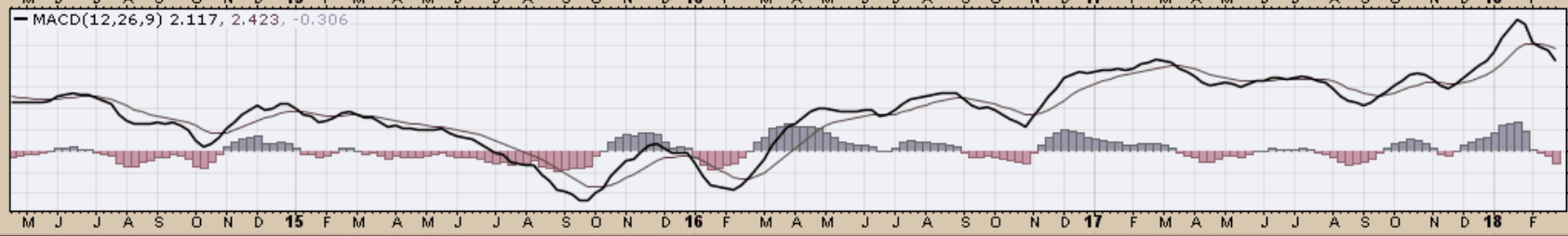
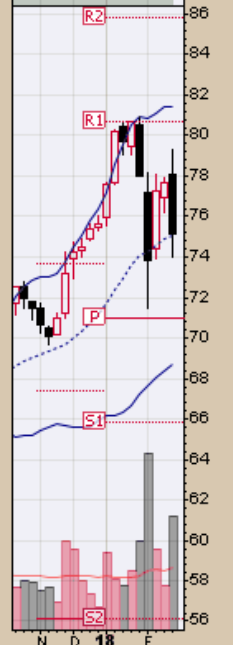
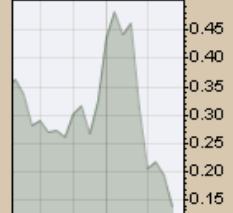
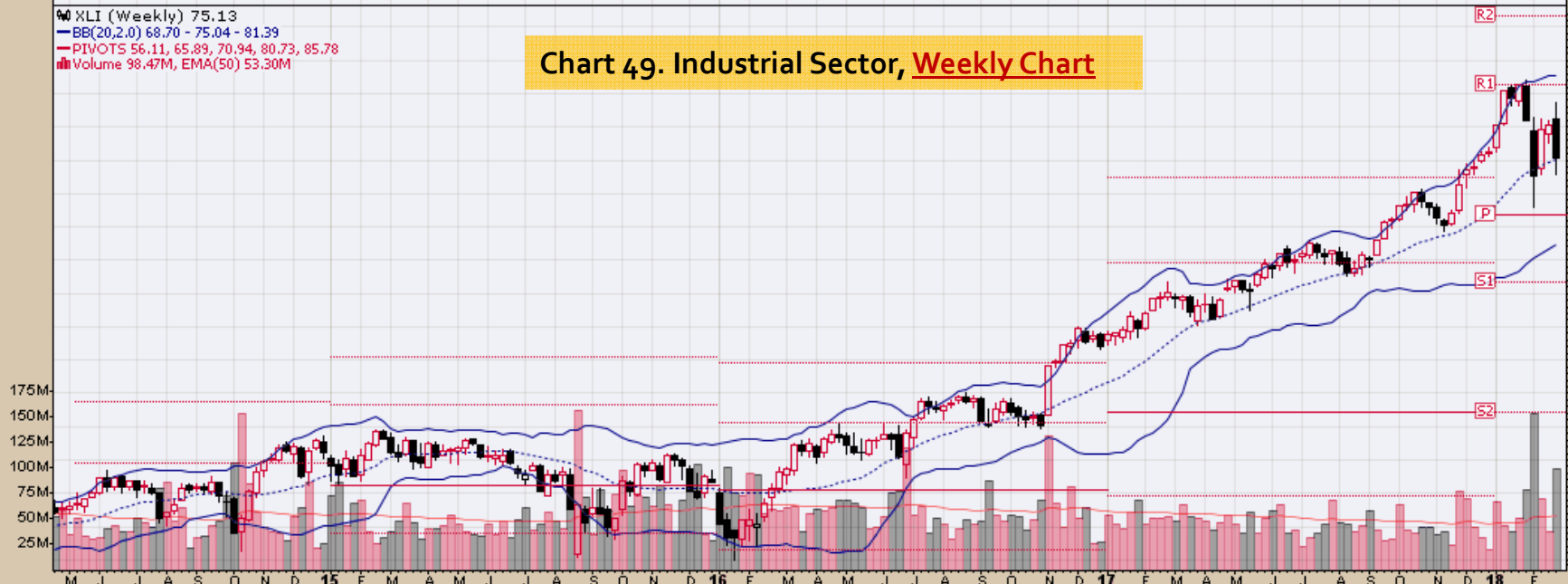
▲ CMF(20) 0.138

© StockCharts.com
Open 78.05 High 79.28 Low 73.98 Close 75.13 Volume 98.5M Chg -2.55 (-3.28%) ▼



XLI (Weekly) 75.13
— BB(20,2.0) 68.70 - 75.04 - 81.39
— PIVOTS 56.11, 65.89, 70.94, 80.73, 85.78
■ Volume 98.47M, EMA(50) 53.30M

Chart 49. Industrial Sector, Weekly Chart



XLB Materials Select Sector SPDR Fund NYSE

2-Mar-2018

▲ CMF(20) 0.103

© StockCharts.com
Open 61.55 High 61.60 Low 58.37 Close 58.96 Volume 32.7M Chg -2.33 (-3.80%) ▼

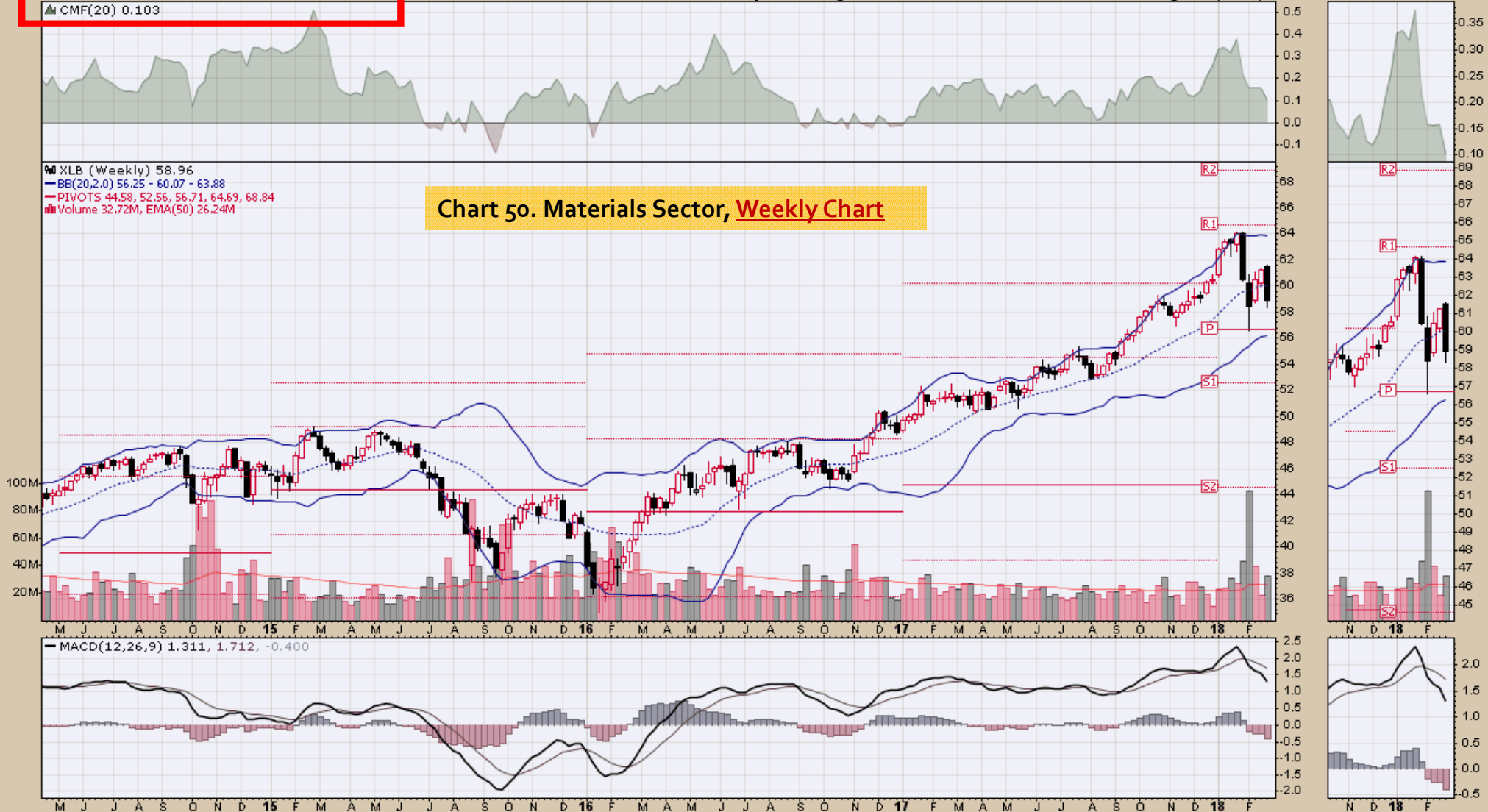
● XLB (Weekly) 58.96

— BB(20,2.0) 56.25 - 60.07 - 63.88

— PIVOTS 44.58, 52.56, 56.71, 64.69, 68.84

■ Volume 32.72M, EMA(50) 26.24M

Chart 50. Materials Sector, Weekly Chart



XLE Energy Select Sector SPDR Fund NYSE

2-Mar-2018

▲ CMF(20) 0.057

© StockCharts.com
Open 69.15 High 69.90 Low 65.65 Close 66.95 Volume 80.8M Chg -1.85 (-2.69%) ▼

Chart 51. Energy Sector, Weekly Chart

XLE (Weekly) 66.95
BB(20,2.0) 63.17 - 70.32 - 77.46
PIVOTS 55.31, 63.79, 69.07, 77.54, 82.82
Volume 80.80M, EMA(50) 71.00M



XLU Utilities Select Sector SPDR Fund NYSE

2-Mar-2018

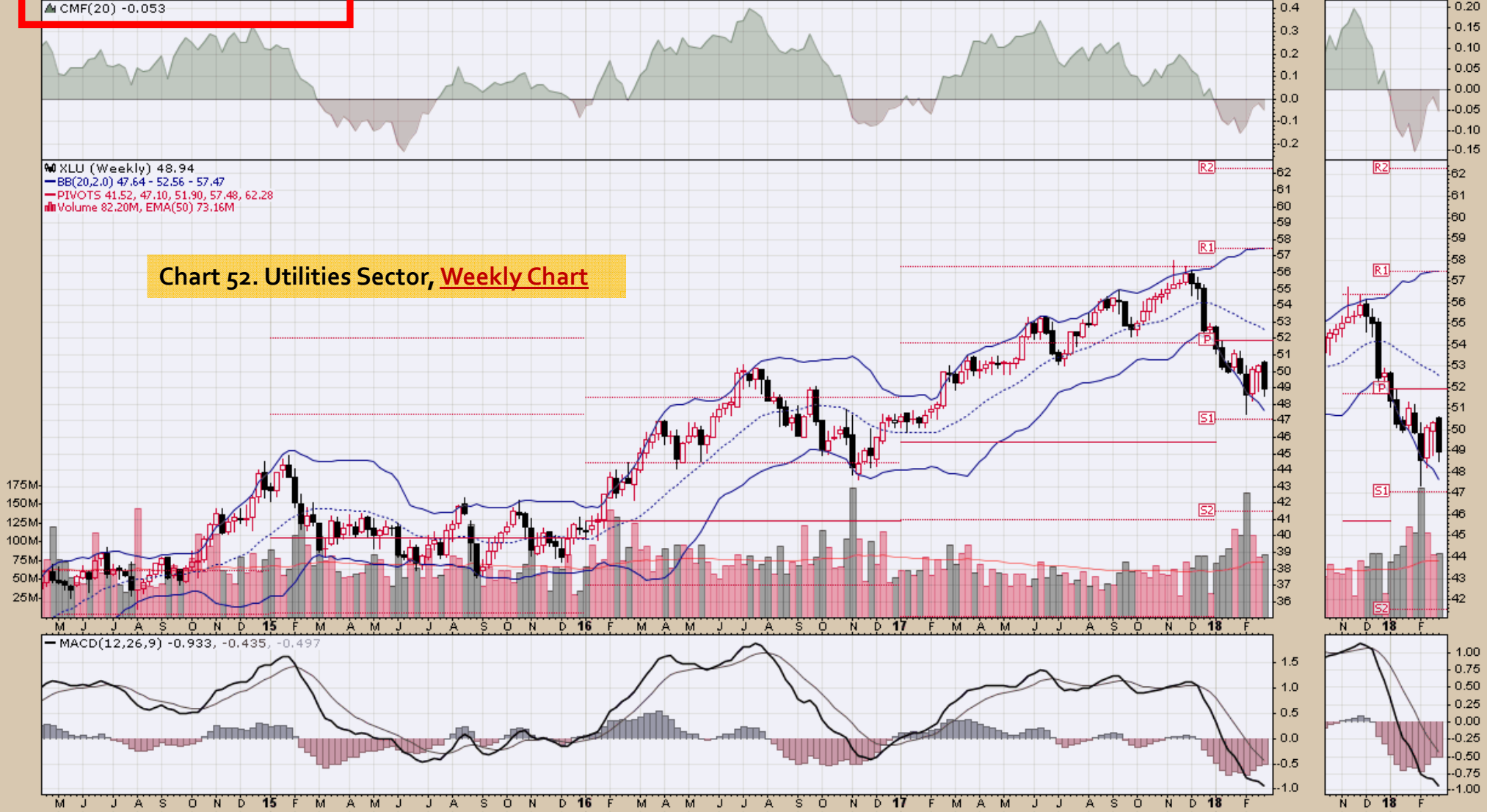
▲ CMF(20) -0.053

© StockCharts.com

Open 50.55 High 50.64 Low 48.53 Close 48.94 Volume 82.2M Chg -1.41 (-2.80%) ▼

▲ XLU (Weekly) 48.94
— BB(20,2.0) 47.64 - 52.56 - 57.47
— PIVOTS 41.52, 47.10, 51.90, 57.48, 62.28
■ Volume 82.20M, EMA(50) 73.16M

Chart 52. Utilities Sector, Weekly Chart



XLP Consumer Staples Select Sector SPDR Fund NYSE

2-Mar-2018

▲ CMF(20) 0.115

Open 54.44 High 54.85 Low 52.82 Close 53.74 Volume 87.4M Chg -0.61 (-1.12%)

© StockCharts.com



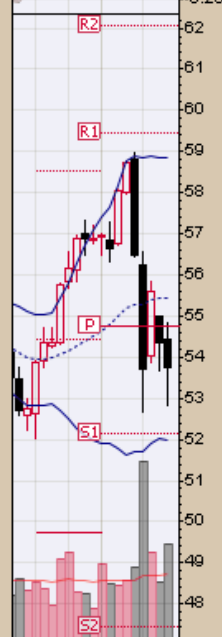
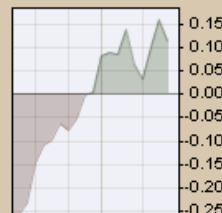
XLP (Weekly) 53.74

BB(20,2.0) 51.97 - 55.42 - 58.86

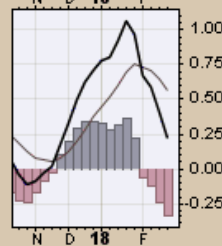
PIVOTS 47.43, 52.16, 54.73, 59.47, 62.04

Volume 87.43M, EMA(50) 59.24M

Chart 53. Consumer Staples Sector, Weekly Chart



MACD(12,26,9) 0.218, 0.560, -0.342



XLY Consumer Discretionary Select Sector SPDR Fund NYSE

2-Mar-2018

▲ CMF(20) 0.268

Open 106.31 High 106.90 Low 101.29 Close 103.05 Volume 33.0M Chg -2.86 (-2.70%)

© StockCharts.com



End