



Snow clearing scenario - RWY 01

WinCon 2 or 3

Priority taxiways:

E1 – E2 – E3 – E4 – N4

Estimated cycle time: 36 minutes



Snow clearing scenario - RWY 01

WinCon 1 or 1.5 hrs after snow fall ends

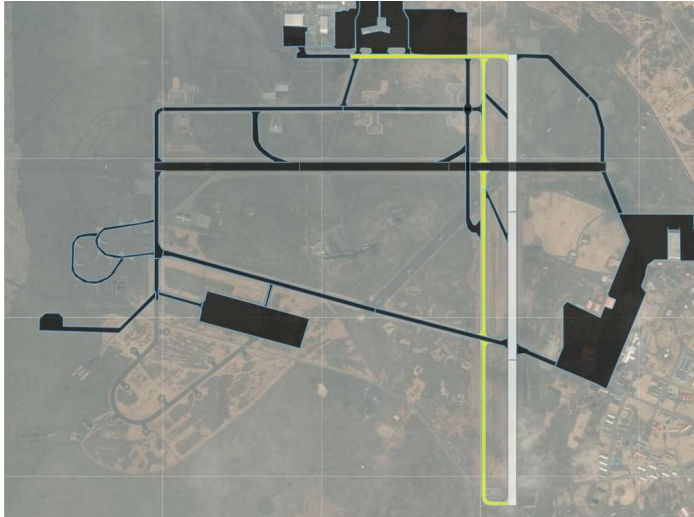
Priority taxiways:

E1 – E2 – E3 – E4 – N4

A1 – M – C3 – K2

Estimated cycle time: 65 minutes

- Snow clearing scenarios are service aims and are therefore only indicative of the possible available taxiways during certain Winter Conditions (WinCons 1, 2, 3, 4)
- Airport Operations and ATC Tower decide the scenario in effect.
- A higher service level scenario will be adopted as soon as possible considering weather situation.
- Regardless of scenario in use, ATC will instruct aircrews on available and recommended routes on the ground
- Service route cycle times are indicative. Turnarounds in junctions for full width snow clearance may add to this time



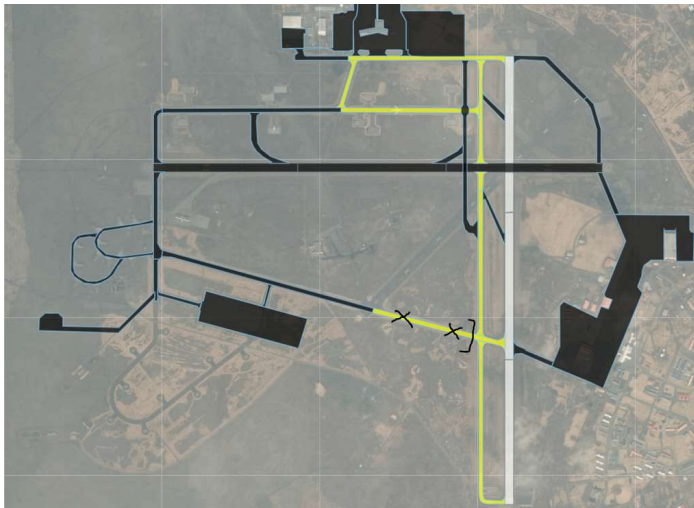
Snow clearing scenario - RWY 19

WinCon 2 or 3

Priority taxiways:

E1 – E2 – E3 – E4 – N4

Estimated cycle time: 36 minutes



Snow clearing scenario - RWY 19

WinCon 1 or 1.5 hrs after snow fall ends

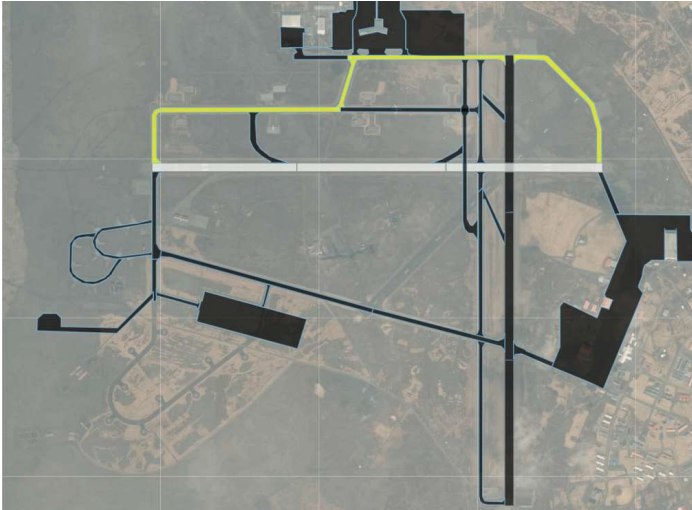
Priority taxiways:

E1 – E2 – E3 – E4 – N4

S2 – C3 – K2

Estimated cycle time: 48 minutes

- Snow clearing scenarios are service aims and are therefore only indicative of the possible available taxiways during certain Winter Conditions (WinCons 1, 2, 3, 4)
- Airport Operations and ATC Tower decide the scenario in effect.
- A higher service level scenario will be adopted as soon as possible considering weather situation.
- Regardless of scenario in use, ATC will instruct aircrews on available and recommended routes on the ground
- Service route cycle times are indicative. Turnarounds in junctions for full width snow clearance may add to this time



Snow clearing scenario - RWY 10

WinCon 2 or 3

Priority taxiways:

N2 – N3 – N4 – C3 – K3 – K4

Estimated cycle time: 30 minutes



Snow clearing scenario - RWY 10

WinCon 1 or 1.5 hrs after snow fall ends

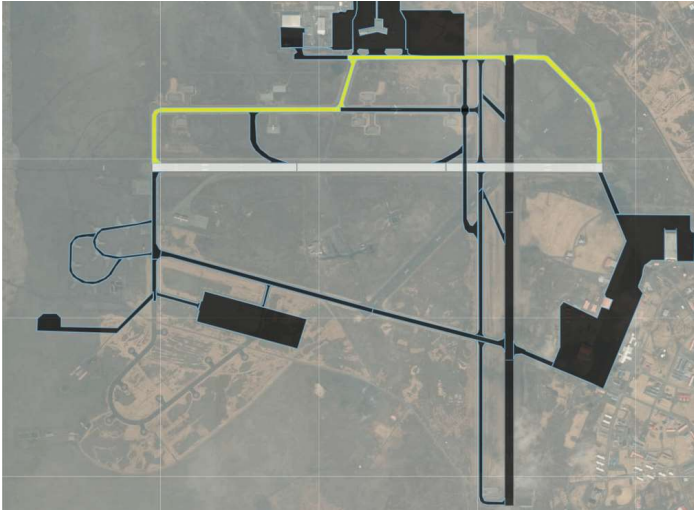
Priority taxiways:

N2 – N3 – N4 – C3 – K3 – K4

M1 – M (north of RWY 10 only)

Estimated cycle time: 46 minutes

- Snow clearing scenarios are service aims and are therefore only indicative of the possible available taxiways during certain Winter Conditions (WinCons 1, 2, 3, 4)
- Airport Operations and ATC Tower decide the scenario in effect.
- A higher service level scenario will be adopted as soon as possible considering weather situation.
- Regardless of scenario in use, ATC will instruct aircrews on available and recommended routes on the ground
- Service route cycle times are indicative. Turnarounds in junctions for full width snow clearance may add to this time



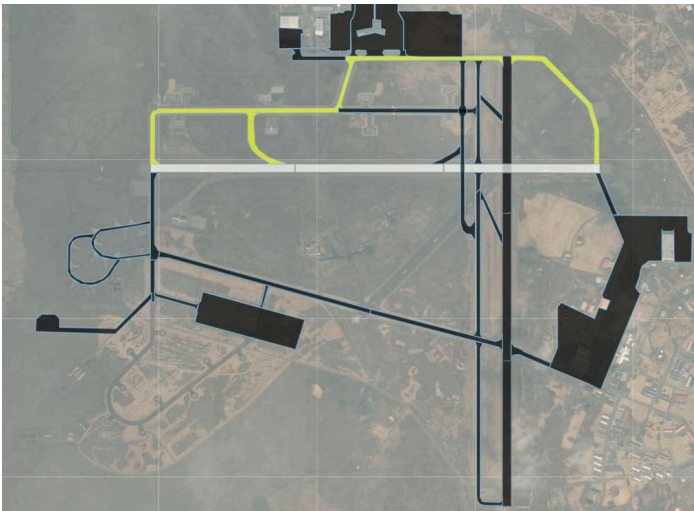
Snow clearing scenario - RWY 28

WinCon 2 or 3

Priority taxiways:

N2 – N3 – N4 – C3 – K3 – K4

Estimated cycle time: 30 minutes



Snow clearing scenario - RWY 28

WinCon 1 or 1.5 hrs after snow fall ends

Priority taxiways:

N2 – N3 – N4 – C3 – K3 – K4

B1

Estimated cycle time: 38 minutes

- Snow clearing scenarios are service aims and are therefore only indicative of the possible available taxiways during certain Winter Conditions (WinCons 1, 2, 3, 4)
- Airport Operations and ATC Tower decide the scenario in effect.
- A higher service level scenario will be adopted as soon as possible considering weather situation.
- Regardless of scenario in use, ATC will instruct aircrews on available and recommended routes on the ground
- Service route cycle times are indicative. Turnarounds in junctions for full width snow clearance may add to this time