

*Loving*

JUNE JULY 2024 • Issue 37

# HOME

*All things*  
**REGENCY**

*Create your own*  
**BRIDGERTON  
BOUQUET**

A floral feature that is  
sure to impress any guest

*In the Spotlight*  
**COOL BRITANNIA**





TORI MIST WALLPAPER

## Trend TALK

*“The ‘Bridgerton’ effect brings with it the revival of renaissance fashion and decadent interiors that conjure a magical whimsy.”*

PAULA / HEAD OF DESIGN



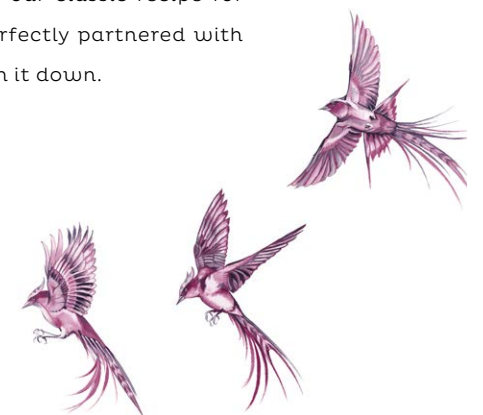
While we may not all call Palaces, Manor Houses & Country Estates Home. It certainly doesn't mean we can't add some regencycore glamour into our day-to-day lives. Our homes are how we make them, and if your desire is to decorate your sanctuary to be fit for a queen (or king!) then let us eat cake!

The 'Bridgerton' effect brings with it the revival of renaissance fashion and decadent interiors that conjure a magical whimsy. Rich tones and vibrant hues sweep across this colour palette and show us signs of wealth from days gone by.

In this issue of Loving Home magazine, we celebrate opulence and maximalism in our product features and re-shine the light on our existing Tate X Graham & Brown collection of Bespoke Murals. To begin, our cover star, the stunning Tori Blush wallpaper is photographed in all its splendour, in a bathroom befitting the royal family.

Be inspired with our 'shop the look' features and achieve a scale of grandeur and glamour through our pairing of the iconic Thrones wallpaper with Turner's Crossing the Brook Bespoke Mural, turning your wall into a magnificent work of art. Into our colour spotlight, where we bow our heads to the ever beautiful Cool Britannia blue, we take you through its styling and perfect pairings, giving you the confidence to use a chilled blue in your home.

Continuing the theme, our in-house creative, Ellie, gives us a step-by-step guide on creating a paper bouquet using offcuts of wallpaper. Then to our culinary creations, dive into our classic recipe for Victoria Sponge, perfectly partnered with a Kir Royale to wash it down.





# In this ISSUE

TREND TALK	3
IN THE PRESS	5
BRIDGERTON INSPIRED INTERIORS	6
SHOP THE LOOK <i>Thrones Chalk &amp; Taupe</i>	11
A REPRESENTATION OF THE LIBERAL ARTS <i>Sleter</i>	12
SHOP THE LOOK <i>Clavering Birds Sage</i>	14
IN THE SPOTLIGHT: <i>Cool Britannia</i>	16
HOW TO: <i>Create A Bridgerton Bouquet</i>	20
GRAHAM & BROWN AT <i>Loods 5</i>	22
AT HOME WITH <i>Melissa</i>   @LITTLETERRACEDHOUSE	24
RECIPE FOR LOVE	28
LOVING YOUR HOMES	30



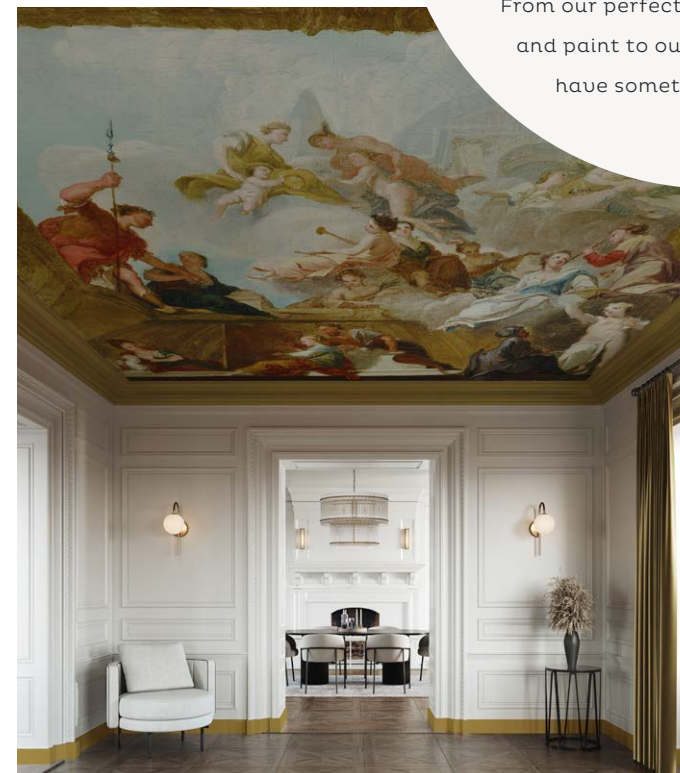
PARADISE JUNGLE SKETCH MURAL  
ARCHITECTURAL DIGEST (US)



FLEUR MIDNIGHT WALLPAPER & RHAPSODY PAINT  
AD HAAGSCHE COURANT (NL)



ANGEL DUST PAINT  
THE SUNDAY TIMES (UK)



SLETER A REPRESENTATION OF LIBERAL ARTS MURAL  
STIJLVOL WONEN (NL)

## IN THE PRESS

*Read all about us!*

We love nothing more than leafing through the top interior press magazines and being inspired!

From our perfectly partnered wallpaper and paint to our stunning murals, we have something for everyone!



CLAVERING BIRDS BED LINEN  
PA MEDIA (UK)



VINTAGE JUNGLE GREY MURAL  
BETTER HOMES & GARDENS (US)





**RESPLENDANCE NAVY WALLPAPER** *perfectly partnered with*  
**WHALE TAIL AND ROWING BOAT PAINT**

**B**ridgerton is a drama full of regency style opulent interiors and regal designs. We can take inspiration from properties featured and try and recreate this timeless look in your own home. With season three coming up we are excited to see some wonderful examples of 'Regencycore' and regal maximalism at its best. The eclectic mix of influences from around the world has inspired the Regencycore look.

The expanding trade routes of the period have brought us many delights such as chinoiserie design, decorative inlays, damask, and lots and lots of gilding. Trailing floral designs and soft romantic pastel colours will conjure up the Bridgerton aesthetic. Soft shimmering effects and gold highlights will add that feeling of opulent glamour. These particularly work well in a bathroom setting with natural lighting – think candles that will flatter the skin tones. For a contemporary take on the trend, a pastel paint palette of duck egg blue and vintage rose pink will add just the right amount of Marie Antoinette.

Rather than modernizing all areas of our homes and starting with a blank slate, we now have a deeper appreciation of historic features thanks to Bridgerton. Extreme maximalism can be something that we find slightly intimidating, so we can make a few changes that give us hints of the Regency style without overwhelming us! When looking at this style we often see high ceilings and grand buildings, but we can recreate this look with some crafty methods, choosing to paint the ceiling in the same colour as the walls gives the impression that the wall continues up into the ceiling making it limitless. We also see panelling a lot in regency design which is an easy way to make plain walls look grander.



To put the final regency stamp on a room we need to see oversized grand works of art, previously only available at great expense, now we offer completely bespoke wall murals, that can be tailored to fit any space, this Renaissance of Venus bespoke mural is part of our Tate collection, offering us the opportunity to bring these great works of art into the home. Beautiful murals are a must for a Regencycore bathroom. Adding decadent scale to any size room a mural adds a focal point when teamed with opulent fixtures.

Chinoiserie styled trails and wisteria inspired florals are the obvious subject matter for Bridgerton-esque wall inspiration. Colours are soft and romantic pastel tones, pale green and pink are a classic combination. Counter point these with rich deep shades to create a dramatic effect. Add a clawfoot bathtub, oversized mirrors and plenty of gold accents and you will have a truly decadent space in which to prepare yourself for the next ball!



RENAISSANCE OF VENUS MURAL *perfectly partnered with* WADDINGTON PAINT





**WALLPAPER**  
*Thrones Chalk & Taupe*  
[grahambrown.com](http://grahambrown.com)



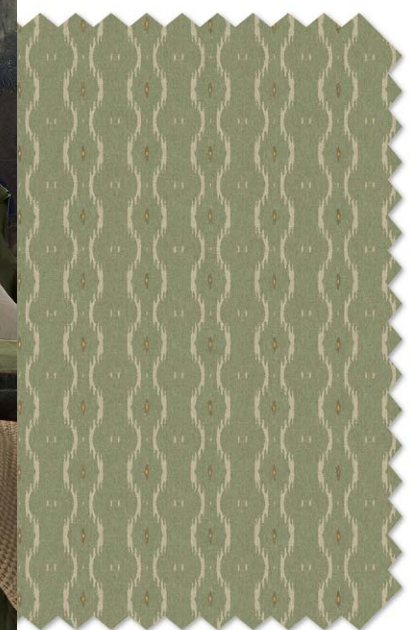
**LAMP**  
*Flower Ceiling Light*  
[rockettstgeorge.co.uk](http://rockettstgeorge.co.uk)



**CUSHION**  
*Dusky Green Opulence*  
[grahambrown.com](http://grahambrown.com)

## SHOP *the* LOOK THRONES

C H A L K & T A U P E



**CURTAINS**  
*Rustic Ikat Sage*  
[grahambrown.com](http://grahambrown.com)



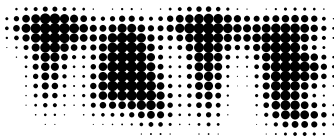
*Samantha*  
[grahambrown.com](http://grahambrown.com)

**TATE MURAL**  
*Turner's Crossing the Brook*  
[grahambrown.com](http://grahambrown.com)





“Hail the fifth wall”



# A REPRESENTATION OF THE LIBERAL ARTS *Sleter*

Ceiling Design for the State Dining Room at  
Grimsthorpe Castle c.1724 Oil paint on canvas 613 ×  
762 mm Tate. Purchased 1982. This early 18th century  
oil painting created the illusion of a golden, coved  
ceiling which spills into the godly world. It features  
Minerva, goddess of wisdom and the arts, and  
Mercury, identified with reason and learning.

Original Artwork Accreditation: Francesco Sleter



A REPRESENTATION OF THE LIBERAL ARTS SLETER  
MURAL perfectly partnered with GLASS HEART PAINT





**MIRROR**

*Round Mirror Antique Gold*  
[exclusivemirrors.co.uk](http://exclusivemirrors.co.uk)



**WALLPAPER**

*Clavering Birds Morning Sage*  
[grahambrown.com](http://grahambrown.com)



SHOP *the* LOOK  
**CLAVERING BIRDS**  
S A G E

**BED LINEN**

*Clavering Birds Sage Green Duvet Cover Set*  
[grahambrown.com](http://grahambrown.com)



**LAMP**

*White Marble Base Brass  
Finish Curved Desk Lamp*  
[modernhomeinteriors.co.uk](http://modernhomeinteriors.co.uk)

**NIGHTSTAND**

*Stone Nightstand with Drawer*  
[litfad.com](http://litfad.com)







IN THE SPOTLIGHT

# COOL BRITANNIA

IN THE SPOTLIGHT



## WALLPAPER & PAINT

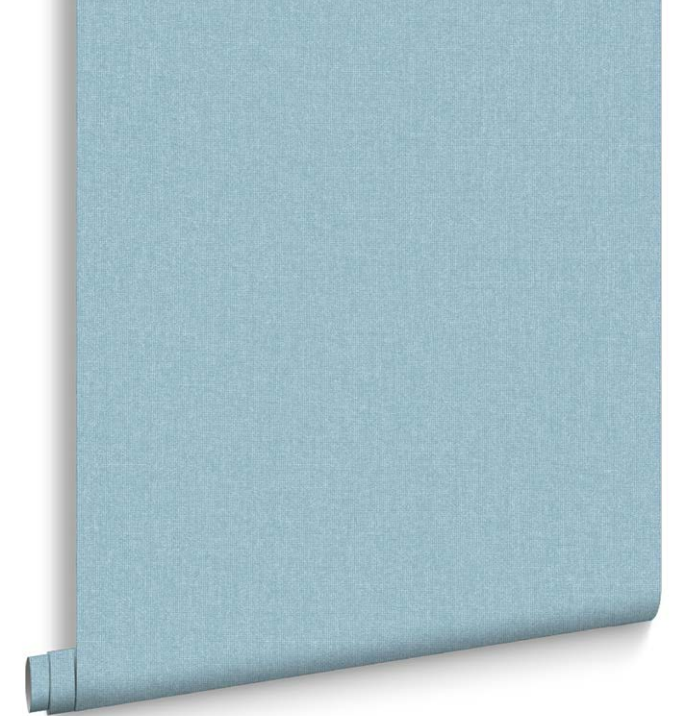
Country Home Breathe Wallpaper perfectly partnered with Cool Britannia Paint  
grahambrown.com

CREATE A TONAL SCHEME AND perfectly partner COOL BRITANNIA WITH...



## FABRIC

Clavering Birds Noon  
grahambrown.com



**WALLPAPER**  
Country Home Breathe  
grahambrown.com



**PAINT**  
Cool Britannia  
grahambrown.com



# COOL DOWN *with* COOL BRITANNIA

This cool blue is the perfect tone for south facing rooms at home, especially throughout summer. The cooling nature of this powdery blue promises to keep your space feeling light, calm and airy – taking the edge of those long hot summer days.



COOL BRITANNIA PAINT *perfectly partnered with* TERRAZZO PAINT





How to

# CREATE A BRIDGERTON Bouquet

A FLORAL FEATURE THAT IS SURE TO IMPRESS YOUR FINEST OF GUESTS



## You will need:

- Left over wallpaper
- Scissors
- Tape
- Circular shape to trace around



## Step 2

Place a circular shape on the wallpaper (we used a small plate) and trace around with a pencil. Repeat this step for as many flowers as you like.



## Step 3

Carefully cut around the circle outlines on the paper.



## Step 4

Draw a spiral into the middle of each circle with roughly 2cm width and carefully cut along this line.

### Top tip

For a more natural petal, move the paper slightly whilst cutting the spiral.



## Step 5

roll inwards from the outer end of your paper spiral. Add tape and make overlapping folds when rolling to create a fluted rose look.



## Step 6

Once you have the flower in the shape you want secure with tape. Combine all flowers together into a bouquet or keep them individual and attach a wire stalk to each!



# GRAHAM & BROWN AT *Loods 5*



This month Graham & Brown welcomed designers and creatives to a beautiful event at Loods 5 in Holland. The aim of the event was to 'Create your own Graham & Brown!'. The event began with a 2024 Trend presentation, created by our talented team of in-house designers, stylists, and trend forecasters. Following this, our friend and collaborator, Sandra (@\_finntage), shared her experience using our products and explained the motivation behind her latest interior design project... watch this space!

Later in the day we invited our visitors to take part in a mood boarding workshop, using wallpapers, fabrics, and paints to create their own work of art, and their own Graham & Brown! This opened their eyes to the ease of our perfectly partnered products, working together to create a cohesive and beautiful mood board, getting them ready for their next project.

Thanks to our wonderful Dutch colleagues for supporting the event and making it a huge success!







# AT HOME WITH *Melissa*



@LITTLETERRACEDHOUSE

## TELL US A BIT ABOUT YOURSELF AND YOUR HOME

I'm Mel, 38 and I live in Croydon with my partner, our 4 year old son Leo, labradoodle Ziggy and tabby cat Pheeb. We bought our Victorian terraced house in 2017 and have been injecting some personality into it ever since. The house was perfectly liveable when we moved in, but we have enjoyed restoring original features and adding our own stamp of personality to the house. I consider myself a maximalist, so I love lots of colour and pattern, but in a considered way!

## WHAT INSPIRES YOUR DESIGN CHOICES?

I'm from a creative family and have learned a lot from my parents who are both artists. I find inspiration in all sorts of things, especially nature and travel - I love lots of greens and blues and floral or botanical patterns. My partner is French, so I like to fuse our cultures together in designs with little nods to both our countries.





DO YOU FIND THERE ANY WELLNESS BEING BENEFITS THAT COME WITH UPDATING YOUR INTERIOR DESIGN REGULARLY?

I love updating the decor in the house to keep it interesting, just as I like to change my own outfits! I think that simple design tweaks throughout the seasons can be a way to make sure your home is providing the comfort it needs to at the time; warmer, cosier colours and accessories get me through winter whilst I love to brighten things up in spring and summer. I always have lots of fresh flowers and houseplants at home too, bringing the outside in, to create a nurturing space. A room needs to make you feel the way you want to feel in that space. For example, we changed the decor in the bedroom from a creamy colour to a rich, dark blue to feel cosy and cocooning whilst the living room is light and airy and feels relaxing. It's fun to play with colour, texture and pattern to create a space that makes you feel good.

WHAT IS YOUR FAVOURITE PART OF THE DECORATION/ RENOVATING PROCESS

Definitely not the prep! I think my favourite part is when I can first get some colour on the walls, with either paint or wallpaper and you start to see the plan come together. I also love the actual designing stage, especially coming up with clever solutions to make the best of the space for example through storage or multifunctional furniture.

WHAT'S YOUR FAVOURITE ROOM IN YOUR HOUSE AND WHY?

My bathroom is my favourite room, because this was the first design I really worked on from an 'interior designer' perspective (having started an interior design course) rather than just thinking about the decor. It all came together exactly as I imagined and it's a space I'm really proud of.



AT HOME WITH MELISSA  
@LITTLETERRACEDHOUSE



Recipe for

# VICTORIA SPONGE CAKE

Sponge  
Ingredients

- 225g baking spread
- 225g caster sugar
- 225g self-raising flour
- 1 tsp baking powder
- 4 large eggs

Filling  
Ingredients

- About 4 tbsp raspberry or strawberry jam and a little caster sugar

Method

- 1 Preheat the oven to 180°C/fan 160°C/gas mark 4. Cut 2 greaseproof paper circles, grease the sandwich tins with baking spread and put the circles inside. Grease the circles.
- 2 Place the baking spread in a large mixing bowl, then add the caster sugar, self-raising flour and baking powder. Crack the eggs one at a time and then add to the bowl.
- 3 Using the electric mixer on slow speed, beat for 2 minutes until smooth. The mixture will be soft enough to drop off the beaters when you lift them up.
- 4 Divide the mixture equally between the prepared tins and level the surfaces with a palette knife or spatula. Place in the oven and bake for 20-30 minutes.
- 5 The cakes are ready when they are risen and pale golden. The tops should spring back when lightly pressed. Cool for about 2 minutes; loosen the edges with a knife.
- 6 Push the cakes out of the tins on their bases, invert them and remove the bases. Cool the cakes the right way up on a rack. Soften the jam with a palette knife.
- 7 When the cakes are cold, remove the lining papers and invert one cake layer onto a plate. Spread with jam, put the other layer on top and sprinkle with caster sugar.



Recipe for Love

# LET'S DECORATE

Buttercream Icing Ingredients

- 600g icing sugar, sifted
- 300g unsalted or salted butter, softened
- Vanilla extract
- Food colouring

Method

- 1 Beat 600g sifted icing sugar and 300g butter together with your chosen flavouring and colouring if using, add 2-3 tbsps of boiling water to loosen and beat until smooth.
- 2 Fill a piping bag with a star nozzle and pipe onto cupcakes or smear in the middle and over the top of a 20cm cake using a palette knife.

To Drink

# KIR ROYALE COCKTAIL

Ingredients

- 1/3 oz Creme de Cassiss
- 3 oz of Champagne
- Raspberries

Method

- 1 Pour the Creme de Cassiss into a fluted glass.
- 2 Add champagne and stir
- 3 Garnish with Raspberries and enjoy!



# SONGS TO DECORATE TO

## Regency

<i>Rich Girl</i>	HALL & OATES
<i>Princess of China</i>	COLDPLAY
<i>Royals</i>	LORDE
<i>Off to the Races</i>	LANA DEL REY
<i>Dancing Queen</i>	ABBA
<i>Rome &amp; Juliette</i>	THE KILLERS
<i>Diamonds Are a Girls Bestfriend</i>	MARILYN MONROE
<i>Everybody Wants to Rule the World</i>	TEARS FOR REARS
<i>Queen of My Heart</i>	WESTLIFE
<i>Killer Queen</i>	QUEEN



OPEN THE SPOTIFY APP AND TAP SEARCH,  
TAP THE CAMERA ICON AND SCAN THE  
CODE ABOVE



@sevenpalmtreehouse

LUCY & BUDDHA PAINT



@house\_of\_pamplemousse

HOT MOCHA PAINT



@studiokohchiu

GRIZEDALE GREEN MURAL



@studioVanAken

STATLEY MANOR MURAL

# LOVING your homes

Tag us, submit a review and become part of the Loving Home family

#grahamandbrown #lovinghome



@sprucehomestudio

RENE NIGHFALL WALLPAPER



@vsthair

GRIZEDALE GREEN MURAL



@miafelce

SMOOTH SAILING & NOUGAT PAINT



