

Loving

MARCH APRIL 2024 • *Issue 36*

HOME



PASTEL PERFECTION

Soft and serene shades of the season

In the Spotlight

NEW EDEN
BED LINEN

DORIS

Returns Home



COPPICE FOREST SUNSET MURAL *perfectly partnered with* **HONEY POT PAINT**

Trend TALK

“The evenings are drawing out, giving us the perfect opportunity to get outside and spruce up your garden, ready for summer!”

MARYANNE / HEAD OF DESIGN



Finally, Spring has sprung! The long-awaited spring weather has arrived, and the evenings are drawing out, this gives us the perfect opportunity to get outside and spruce up your garden furniture, doors, and windows, ready for summer! Our very own decorator Sarah has talked through some of the quick and easy DIY jobs you can do to make all the difference, on pages 18 and 19.

In the issue we will be looking at the key trends for Spring 2024, including floral designs and pastel colourways. We'll take you through our new Watercolour Murals collection, each colourway inspired by the changing of seasons, and give you some tips to help with installation.

If DIY is not for you this season and you are wanting more of a quick fix, why not

give your bedroom an update and bring the outdoors in? Take a look at our NEW bed linen designs and cushions in our 'shop the look'. Showcasing New Eden, Design of the Year for 2024, boasting deep green trees and pops of rich yellow and orange florals. All our bed linen is made from sourced cotton sateen, guaranteed for you to have a great night's sleep. Available in double, king, and super king sizes, you can refresh every bedroom in your home with ease, not just your own.

Finally, whether you have been inspired to take up a decorating or renovation project over the Easter holidays, or if you have tried out our recipe for 'Fruity Puff Pastries' and danced along to our Easter playlist. It makes the effort all worthwhile!

In this
ISSUE

TREND TALK	3
TREND INSIGHT	6
<i>Watercolour Stills: MURALS</i>	8
<i>Top Tips: MURAL INSTALLATION</i>	10
BED LINEN COLLECTION ~ <i>New in!</i>	12
<i>DIY: SPRING SPRUCE UP</i>	18
DECADES OF <i>Doris!</i>	20
RECIPE FOR LOVE	26
SONGS TO DECORATE TO	28
LOVING YOUR HOMES	29
JOIN US AT <i>Grand Designs Live!</i>	30



BORNEO MIDNIGHT WALLPAPER
LIBELLE LIVING (HOLLAND)



In The Press

SLETER A REPRESENTATION OF THE LIBERAL ARTS MURAL
THE ENGLISH HOME (UK)



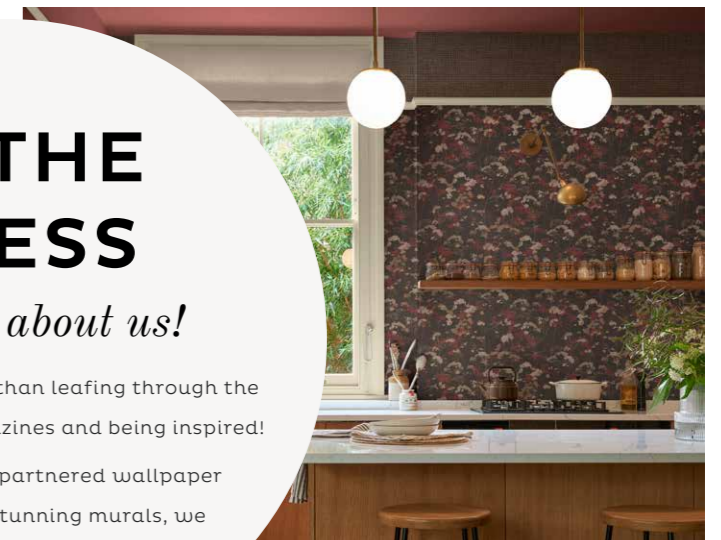
AMBIRE NEUTRAL WALLPAPER
IDEAL HOME (UK)

IN THE PRESS

Read all about us!

We love nothing more than leafing through the top interior press magazines and being inspired!

From our perfectly partnered wallpaper and paint to our stunning murals, we have something for everyone!



FLOWER PRESS GLASTONBURY WALLPAPER
PA MEDIA (UK)



FLOWER PRESS DENIM WALLPAPER
VT WONEN (HOLLAND)



VIRIDIS PAINT
WALL STREET JOURNAL (US)



WATERCOLOUR STILLS SUNSET *perfectly partnered with* **OPULENCE LAVENDER**
BLINDS & ULUWATU PAINT

As we begin to change seasons, leaving behind the cool temperatures of winter where the natural scenery is filled with sparse tree branches, without their leaves, crisp frosty grass and dark empty skies, we advance into Spring. The season when foliage and greenery start to bloom.

While the flowers and trees are blossoming in the perfect conditions, we start to see the beautiful spring seasonal colour palette in full. Soft, muted shades of lilac, daffodil yellow, sky blue, meadow green and pastel pink, we have just the perfect paint palette to reflect with Lilla, Chickadee, Penelope, Accrington Road and Novel. Whether you're thinking of revitalising an old piece of furniture using our Easter pallet or wanting to transform an empty wall space either can do with our pastel paints or our newly launched murals - 'Watercolour Stills'.

Inspired by all things pastel, our 'Watercolour Stills' are the essence of enchantress. Produced as pieces of contemporary art with muted colourways. Taking inspiration from watercolour art itself, this design imitates those of the unique spread of the lightweight paint. Adding colour into your space in a sophisticated way, as the soft inky marks spread across your space making it feel almost as though artwork is drying on your walls.

Watercolour

STILLS

EVENING

Fill your space with this emotive watercolour array as the paint dries in pool upon your wall, Shades of blue will take over allowing subtle hints of grey to peer through complimented by a light touch of greens. This Bespoke Wall Mural will transform your home giving a nod to a contemporary art gallery feel with the abstract art design.



FABRIC
Lavish Ocean
grahambrown.com



MURAL
Watercolour Stills Evening
grahambrown.com

Perfectly partner with...





BALLOON RACE MURAL

Top tips for... INSTALLING YOUR MURAL

WITH DIY CONTENT CREATOR
Jenny Game @jenshomejournal

TELL US A BIT ABOUT YOURSELF AND YOUR HOME

I'm a 31-year-old DIY content creator and I've spent the last few years turning my passion from a hobby into a second job. My love for interiors started as a young girl; always changing my bedroom and spending hours decorating houses on the sims. I watched my Dad doing DIY growing up so when I bought my first home in 2019, I jumped straight into decorating every room which is where my passion grew even further. In August 2023, my husband and I moved into our forever home together - a 4 bed 1930's house in need of lots of TLC. I wanted a bit more of a project, a house where I could make a difference but also a home where we could raise a family.

WHAT INSPIRES YOUR HOME DÉCOR CHOICES?

In my previous home, my style was inspired by whatever made me happy - I loved experimenting with colour and pattern, I decided it was more a house to have fun with and develop my DIY skills. It was a new build, so the style was definitely more modern, but it also taught me what I didn't like too. Now we're in an older property, we've definitely let the age of the house help inspire the decisions in each room. We want to bring back some of the original features, breathe life into this home and turn it from magnolia to magnificent which is what I share on my Instagram every day.

WHAT DREW YOU TO OUR BALLOON RACE MURAL?

When we found out that I was pregnant, I immediately started looking at nursery ideas and knew I wanted something a bit different. So when I found the Balloon Race mural, I knew it was perfect. Not only because I hadn't seen anything like it before, but it was also colourful yet gender neutral and also felt really in keeping with the age of our house.

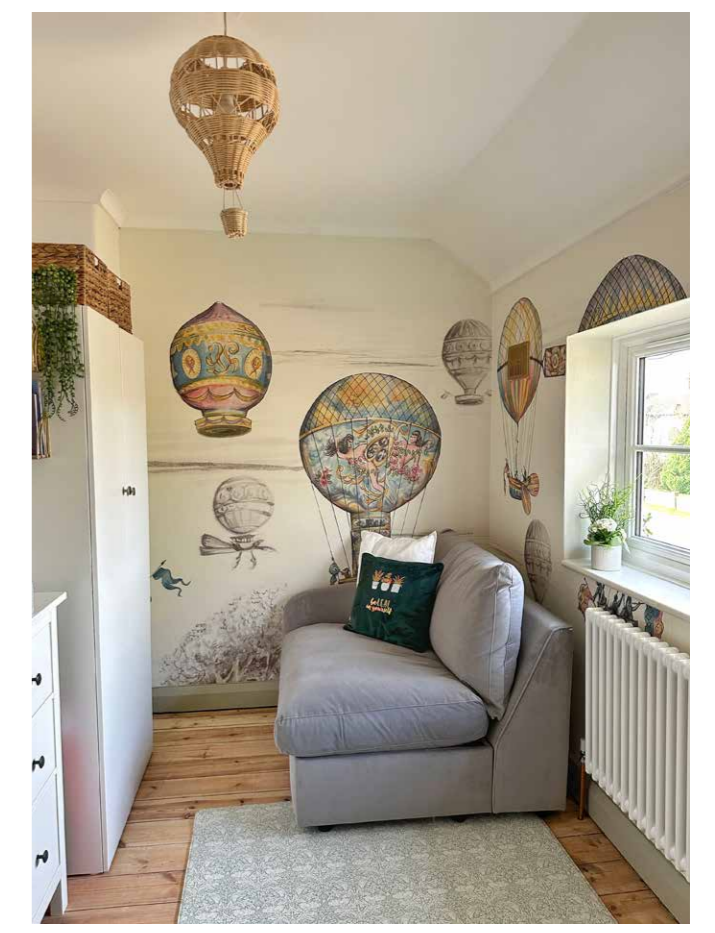
HOW WAS THE PROCESS OF INSTALLING THE MURAL?

The mural itself was a dream to put up. Although I've done wallpapering before, the installation guide it came with was great to see. It would definitely help anyone hanging paper for the first time. The quality was excellent and so really easy to work with and I'm so glad I found this design as it's really brought my vision to life.



ANY TIPS AND TRICKS FOR THOSE NEW TO WALLPAPERING?

My best tips for anyone who is new to wallpapering would definitely be:
- Try to buy 'paste the wall' style paper, it's much easier to hang.
- Whilst you're applying the paper to the wall, it is moveable before the paste dries so if you need to pull sections back to realign before you're happy with it then you can.
- Mine was a mural so was pre-measured to my room but if you're ordering wallpaper and not a mural, you're better to order slightly too much than not enough to account for matching it up.



NEW *Bed Linen* COLLECTION

For our Spring Summer 2024 Collection we have introduced new designs to perfectly coordinate with some of our stunning Wallpaper designs. Bringing soft colours and spring florals into these designs make our bed linens the perfect addition to your home this spring.



BADBURY RUG
by Garden Trading
houseofisabella.co.uk



WALL LIGHT
Millhouse Antique Brass
johnlewis.com



CUSHION
New Eden
grahambrown.com



Viridis
grahambrown.com



CERAMIC DISH
Light & Living Deco Dish
olivias.com

SHOP *the* LOOK NEW EDEN

Welcome to New Eden, proudly our Design of the Year for 2024. Boasting deep green trees and pops of rich yellow and orange florals, this intriguing forest design is full of life. Pair this elegant bedding with our Colour of the Year Viridis for the ultimate perfectly partnered look.

All our bed linen is printed onto 100% cotton sateen with a 220 thread count for a soft and supple feel. Each set includes the duvet cover and 2 pillowcases and comes packed in a co-ordinating fabric tote bag, perfect for storing your bedding or for use as a reusable bag.

SIDE TABLE
Bobbin Side Table
loaf.com

VASES

Set of 3 Shaped Ceramic
Mini Textured Vases
next.com





CLAVERING BIRDS SAGE BED LINEN

Hand drawn birds gently perching on mystical tree branches. This design took over 40 hours to carefully illustrate and hand paint in our UK design studio. We love the playfulness of the vibrant birds looking towards each other, gossiping almost. This bedding features elegant birds bursting with colourful feathers perched amongst pink florals on a calming sage backdrop. With the reverse of the design having striking florals pop against the bright white backdrop. All our bed linen is printed onto 100% cotton sateen with a 220 thread count for a soft and supple feel. Each set includes the duvet cover and 2 pillowcases and comes packed in a co-ordinating fabric tote bag, perfect for storing your bedding or for use as a reusable bag.

*Available with Perfectly Partnered
Paints and Fabrics*



CLAVERING BIRDS MORNING SAGE



Make a statement with our Flower Press bedding. This design gives you the flexibility to be bold with a rich Indigo backdrop on the face and subtle, calming tones on the reverse of the duvet. Transform your bedroom to a beautiful flower garden with this gorgeous design.

FLOWER PRESS INDIGO BED LINEN



WALLFLOWER NIGHT GARDEN BLACK BED LINEN



WALLPAPER
Wallflower Night Garden Black
grahambrown.com

Escape at midnight to a luminous secret garden with Wallflower Night Garden. Designed with pops of colour of vibrant red and orange floral blooms against a deep black background creating an enchanting midnight landscape. With the reverse of the design having a fresh, spring feel of beautiful tones of pinks and oranges on a soft white background.

*Available with Perfectly Partnered
 Paints and Fabrics*



Black Cab



Uluwatu



Popsicle



*G&B
 White*



CUSHION
Opulence Burnt Orange
grahambrown.com

ROLLER BLIND
Black Cab
grahambrown.com





CELEBRATING

International Women's Day

SARAH / G&B DECORATOR



SPRING SPRUCE UP WITH *Sarah*

Three quick jobs you can do to refresh your home...

Embrace the season by making a few small home improvements to infuse your home with springtime vibes. When looking at jobs to complete, look for the projects you have been putting off and start ticking them off your list.

MAKE AN ENTRANCE

One of our favourite areas of the home to spruce up is the front door and with the weather forecast set to be full of sunshine, this is the perfect weekend to do it. With the front door, it is important to go through all the steps, make sure you lightly sand the door down and then paint with a primer before finishing with a few coats in your colour of choice in Exterior Eggshell, before the weekend is done, you'll have a brand-new look.



SANTORINI EXTERIOR EGGSHELL

ADD A LITTLE COLOUR

When looking to add colour to your outdoor spaces, such as doors and windows, there are lots to choose from. There are two approaches you can explore when increasing your kerb appeal, by either being sympathetic to the environment around you or by letting your personality shine. The colour blue is a popular choice, it is said to promote a feeling of serenity and calm, it even adds value onto your home when selling. We love our Blue Monkey shade as it provides a little pop of colour for passers-by.



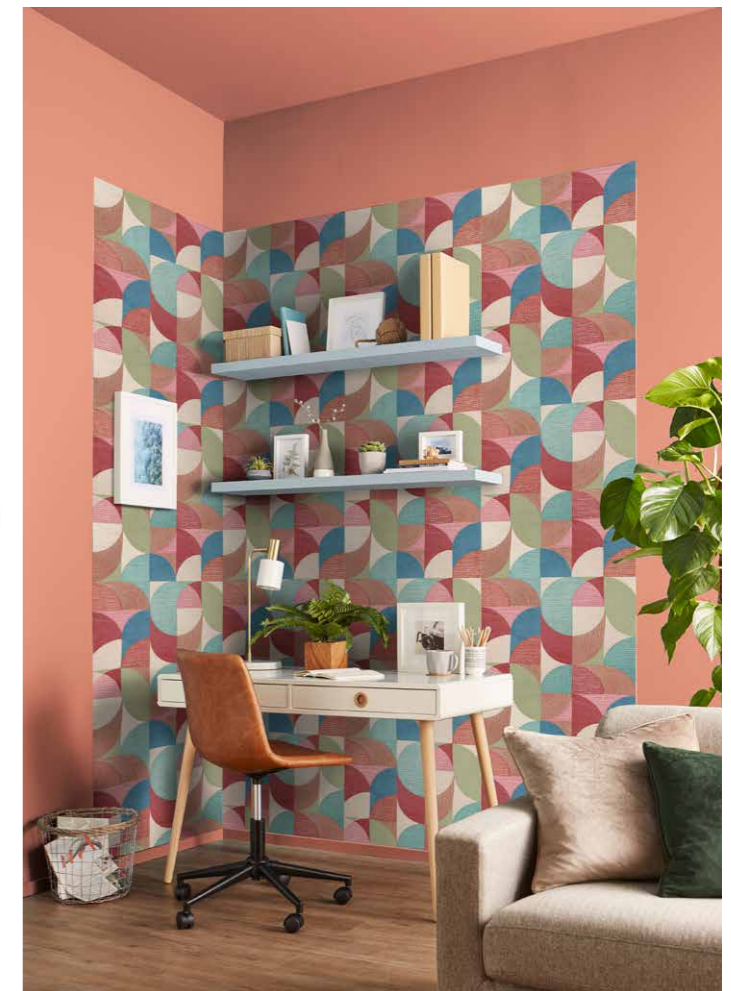
ELLIE & TROUBLE MATT EMULSION

CREATE A SPACE

Creating a feature wall, or a zoning space in the home is a great project to undertake; with working from home now commonplace, we are demanding more from our interiors; rooms are required to be multi-purpose, often with work and leisure combined. Using wallpaper allows you to add some creativity to the space, we use a paste the wall application method making the process quick and simple. A wallpapered feature wall can define a space, so choose your wall wisely.



In open-plan homes we use zoning to define different spaces, in a room, the addition of Stitch Craze Carnival wallpaper block creates a creative space within the room. When using paint and wallpaper to divide a space, using a tonal palette can ensure that the room stays harmonious. Avoid creating a feature wall in an already crowded environment as this will simply feel cluttered and chaotic. Finally, don't forget to have fun with the space! Consider an open plan space a blank canvas and a brilliant opportunity to be creative.



STITCH CRAZE CARNIVAL & ALOHA MATT EMULSION

DECADES OF *Doris*

*After 10 years of service –
Doris has come home to live
out the rest of her years.*

NORTHERN ROSE

The first wallpaper Doris was wrapped in was the Wallpaper of the Year 2014, Northern Rose. This stunning wallpaper features a beautifully painted, fresh floral design in vibrant pink, explosive blue and with lush embellishments, whilst retaining a certain British, vintage charm.





PIERRE

In the year of 1703, French Botanist Charles Plumier, named a flowering tree from the island of Martinique, Magnolia, in honour of renowned botanist Pierre Magnol. This typically femme-floral design boasts a hidden strength, with magnolias symbolising purity and dignity. Pierre Pink marries muted pink pastel florals with assertive white gold metallic, creating a strong and sensitive design. Developed from the magnolia within Pierre, Penelope Paint is an uncomplicated and dainty tone which pairs perfectly with this design.

BLOOMSBURY

Bloomsbury Neo Mint was our Wallpaper of the Year 2020 – this stunning floral captures the delicate designs of the 20th Century. Bright, vibrant intertwining florals are at the centrepiece of this airy wallpaper, accompanied by beautiful butterflies in a serene mint setting – blooming lovely!



TIMEPIECE

Timepiece Amethyst was our Design of the Year 2021 – and doesn't she look beautiful? This wallpaper design takes us on a reflective journey through our archives, from 1946 to present day to celebrate our Diamond 75th anniversary. Printed on a shimmering mica fibrous paper and combining designs such as our very first wallpaper produced, classic stunning florals and a sharp diamond geometric, this wallpaper affirms our innovative nature and pride in what we do.

RESTORE

With an ethereal and transfixing pattern where wild trails of exotic botanicals float against a smoky blue backdrop – it's no surprise that Restore Midnight wallpaper was our Design of the Year 2022. The sense of peace and serenity leads you deeper into the design, filled with natural wonder juxtaposed with sophisticated elegance. This genuinely stunning midnight blue wallpaper Perfectly Partners with a gorgeous palette of bespoke colours, such as the hauntingly beautiful Breathe paint. Or accent with Gowns and Crowns, a wispy grey that subtly picks up on the nuanced tones of the Restore Midnight wallpaper pattern.

SIMPLY THE BREAST

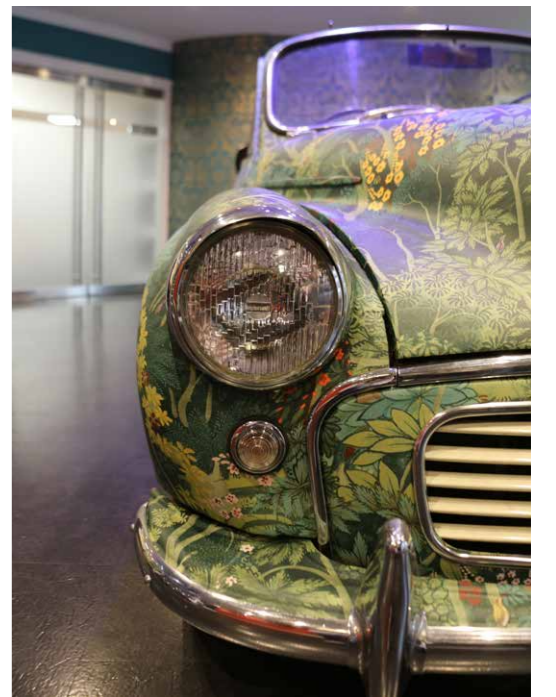
Simply The Breast is a limited-edition charity wallpaper designed in collaboration with charity, Coppafeel! for International Breast Cancer Awareness month, with £5.00 from every roll being donated to charity. We want you to decorate your space with a splash of feminine flare, with pastel drawings of women in lingerie this abstract design is sure to add some beauty to any interior space, namely the bedroom, bathroom or dressing room. Not only does this wallpaper look fantastic, but it was also designed to encourage you to check yo'self and get to know your normal, so let's decorate-tit!





NEW EDEN

Welcome to New Eden, proudly our Design of the Year for 2024. This dramatic forestscape is full of hidden treasures, pops of colour emerge through the design with yellow, orange and pink tones complimenting the emerald tree canopies. This wallpaper will transform any room, we recommend complimenting the design with our Colour of the Year Viridis or for a moodier atmosphere with our Adeline paint.



Recipe for FRUITY PUFF PASTRIES

Ingredients for a serving of 6

1 sheet of Rough Puff Pastry

1 cup of Custard

1 Egg

Selection of berries: blueberries,
strawberries, cherries and blackberries

6 tablespoons of Icing sugar

Parchment paper

Method

- 1 Preheat the oven to 180C and lay down your parchment paper on the baking tray.
- 2 Cut your pastry into 6 equal squares then score a square in the centre of each piece of pastry, cutting through all the way apart from 2 opposite corners, then fold over the cut corners over to create the shape.
- 3 Whisk your egg to create your egg wash, then lightly cover your pastries while placing them on the parchment paper.
- 4 Place the tray in the middle of your oven and bake for 12 minutes, until risen and golden brown, while removing from the oven carefully push down the inside section.
- 5 Once cooked, take out and allow to cool. While they cool, cut up your selection of berries and place to one side.
- 6 Once cool, fill the gap you created with custard and pop them in the fridge for 20 minutes allowing the custard to firm slightly.
- 7 Remove from the fridge and decorate with the berries.
- 8 Finally finish with a dusting of icing sugar and serve!



To Drink

BLACKBERRY GIN FIZZ

Ingredients

1 ounce of Blackberry liqueur

2 ounces of Gin of your choice

Prosecco

Ice Cubes

Blackberries

Method

- 1 Fill your favourite glass with ice and pour over both the 1 ounce of Blackberry Liqueur and 2 ounces of the gin you have selected and give it a stir to combine!
- 2 Pour over the prosecco to fill the glass.
- 3 Garnish with Blackberries and enjoy!

SONGS TO DECORATE TO

Resistance

Respect **ARETHA FRANKLIN**

Man, I Feel Like a Woman **SHANIA TWAIN**

Girl on Fire **ALICIA KEYS**

Girls Just Wanna Have Fun **CYNDI LAUPER**

Born This Way **LADY GAGA**

No Scrubs **TLC**

9 to 5 **DOLLY PARTON**

The Man **TAYLOR SWIFT**

Hard Out Here **LILY ALLEN**

Who Run The World **BEYONCÉ**

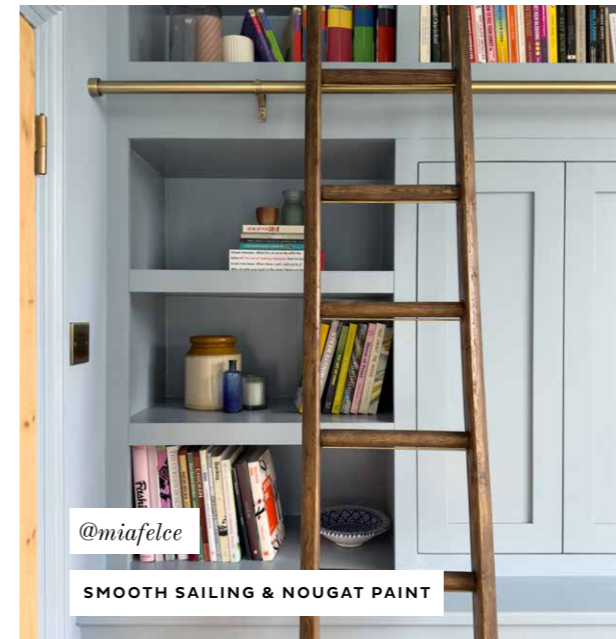


OPEN THE SPOTIFY APP AND TAP SEARCH,
TAP THE CAMERA ICON AND SCAN THE
CODE ABOVE



@athollarmsdunkeld

GLASSHOUSE FLORA WALLPAPER



@miafelce

SMOOTH SAILING & NOUGAT PAINT



@ourfixedabode

WALLFLOWER DUSK WALLPAPER & MIDNIGHT HORIZON PAINT



@layered.home

NEW EDEN MURAL



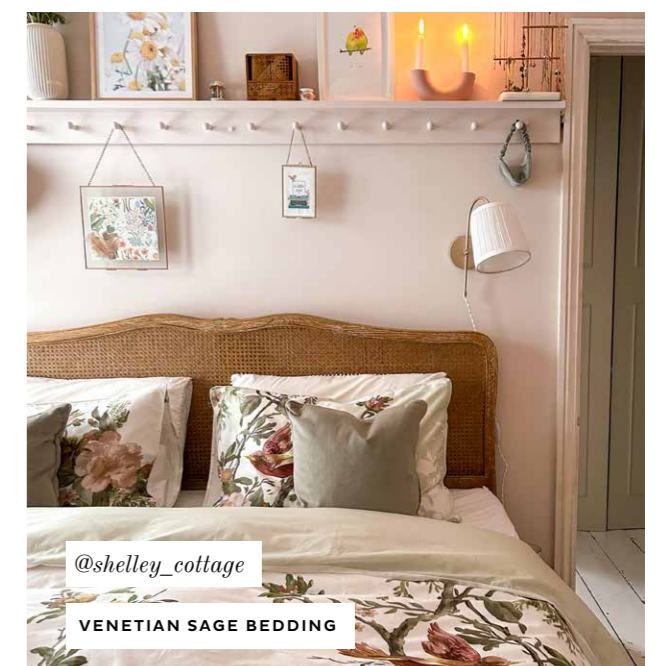
@homeonthehey

PLOVER PAINT



@houselust

BOBBI PAINT



@shelley_cottage

VENETIAN SAGE BEDDING

LOVING *your homes*

Tag us, submit a review and become part of the Loving Home family

#grahamandbrown #lovinghome

Come and see us...

GRAHAM & BROWN
AT
**GRAND
DESIGNS LIVE**
LONDON

4 - 12 MAY 2024 • EXCEL

Graham and Brown will take up residence for 8 days at London ExCel. This will feature the latest in design, innovation and home product guidance. Visitors are invited to grab their tickets online from the Grand Design Live Site to come and see an array of exhibitors, workshops, experts and live talks across the four unique project zones: Build, Kitchens and Bathrooms, Gardens and Interiors.

You will be able to find us at stand L19 where we would love you to take part in our mood boarding workshop. This will give you the opportunity to explore a range of wallpapers, paints and fabric samples, helping you find the perfectly partnered combination to take home and explore. We will be providing expert advice helping you create a pack of samples to take away and begin your Graham and Brown journey.

Get your tickets from the link below!

[Grand Designs Live ExCel Tickets and Dates 2024 \(seetickets.com\)](https://www.seetickets.com)



