

Loving

JULY AUGUST 2023 • Issue 32

HOME

Style your summer

DREAMHOUSE

NEW!

**MEET US IN
THE SHADE**

Your favourite patterns, now
available for curtains and blinds!

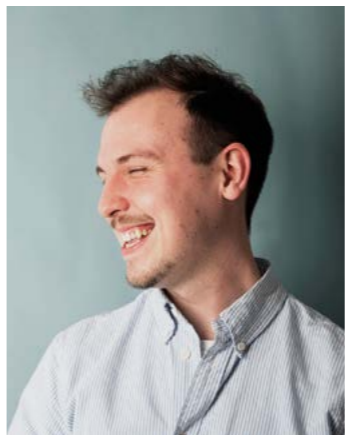
In the Spotlight

PINK ROBIN

A beautiful fuchsia pink that's
guaranteed to be a talking point.



Check out our **MALIBU DREAM COCKTAIL** recipe on page 27



Trend TALK

“If injecting colour and playfulness into your décor is the aim – assignment nailed!”

JAMES / SENIOR BRAND MANAGER

To quote 90s pop royalty Aqua; “Imagination, life is your creation.” In this issue of *Loving Home* we talk all things Barbiecore. If injecting colour and playfulness into your décor is the aim – assignment nailed! As we look for relief from the doom cycle of news, it was a fun break to hear about the temporary international (yes that’s right!) shortage of pink paint. All thanks to the colossal set of Greta Gerwig’s upcoming *Barbie* film. Luckily, we still have plenty of punchy pinks for you to shop featured in this issue, such as Pink Robin & Bittersweet.

We’re in full summer mode with some inspired recipes to host the perfect barbecue! Or why not pull out that dusty dolls house from the attic for a fun summer upcycle project.

We also take a look at the amazing greenhouse transformation from influencer Nicola Huthwaite, transforming her Victorian style potting shed. Learn about the importance of sampling paint colours before purchasing and how colour perception is strongly linked to lighting conditions. For example a colour used inside the home can look dramatically different outside where much more natural light is available.

Check out our great Q&A with designer Clarissa Hulse, in which she answers questions around setting up on her own, advice for designers trying to break into the industry and more about her design process. Lastly we have some gorgeous new window furnishing designs – now available on a waterproof fabric perfect for kitchens and bathrooms.

In this
ISSUE

TREND TALK	3
CREATE YOUR DREAMHOUSE	6
<i>Shop the Looks</i>	8
<i>In the Spotlight:</i> PINK ROBIN	14
AT HOME WITH	16
MEET US IN THE SHADE ~ <i>New in!</i>	18
CLARISSA HULSE <i>Q&A</i>	24
RECIPE FOR LOVE	26
<i>How To:</i> DREAM DOLLHOUSE	28
SONGS TO DECORATE TO	30
LOVING YOUR HOMES	31



BLOEM TEAL BESPOKE MURAL
HOUSE BEAUTIFUL



ALOHA PAINT
HOUSE BEAUTIFUL



In The Press

WALLFLOWER DAY WALLPAPER
WOON MAGAZINE



DOLLY BIRD PAINT
ELLE DECORATION

IN THE PRESS
Read all about us!
We love nothing more than leafing through the top interior press magazines and being inspired! From our perfectly partnered wallpaper and paint to our stunning murals, we have something for everyone!



GLASSHOUSE FLORA WALLPAPER
SOCAL DESIGN

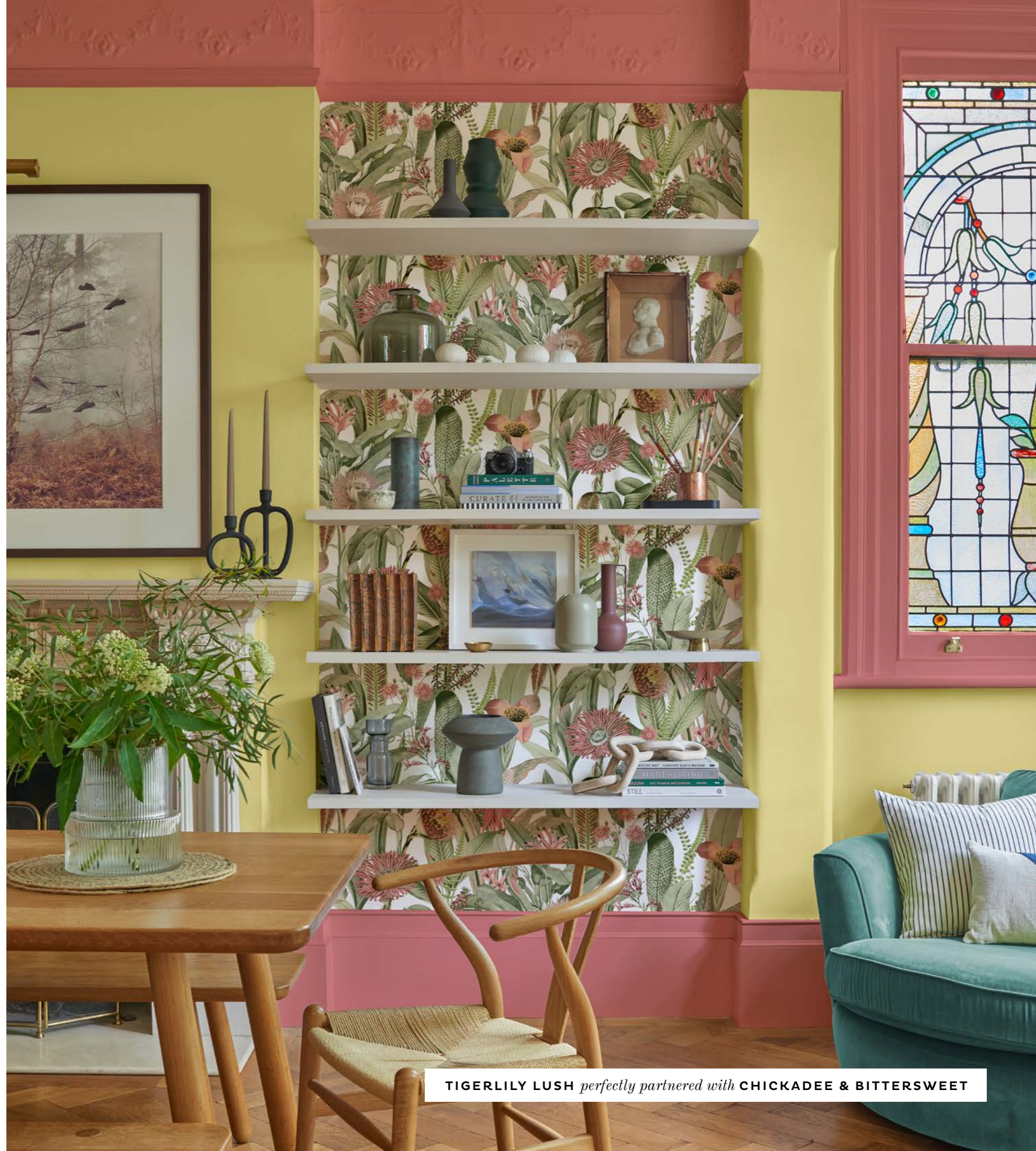
Create your **DREAM HOUSE**

We are seeing the influence of the so-called Barbiecore trend pop up almost everywhere. The hallmarks of this daring style are canary yellows, aqua blues, and of course hot pink, as well as retro accessories that hark back to the 80s and 90s. The ultimate goal of this trend is to create a home that feels like living in a life size dollhouse.

For the classic look Barbiecore look, pair ornate vintage furniture and soft florals with pastel colours. We recommend our delicate Tori Duck Egg wallpaper for this look along with perfectly partnered paint shade Munchkins Nose for panelling.

For a more contemporary look we recommend pairing sugary pink with bottle green. Our Daintree Palm Blush is the perfect pick for this look with luscious green palm leaves sweeping over a textured pink backdrop and with this design now available on curtains and blinds, you can introduce Barbiecore into any room of your home.

If you're looking for a retro-inspired look, try combining the bold teals and fuchsia pinks. Try our bold Vintage Tropical Blush bespoke mural for the base of this look and pair with perfectly partnered shades August and Mizumi to create your dreamhouse!



TIGERLILY LUSH perfectly partnered with **CHICKADEE & BITTERSWEET**



WALLPAPER
Tori Duck Egg
grahambrown.com



CONSOLE TABLE
Allaire Console Table
wayfair.com



CHAIR
*La Rochelle French Style
Rattan Arm Chair*
homedirect.com



LAMP
*Christine Ribbed Glass
Table Lamp*
dunelm.com

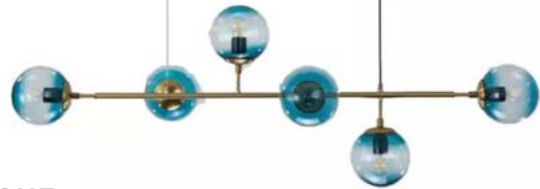
SHOP *the* LOOK
TORI
DUCK EGG



*MUNCHKINS
NOSE*
grahambrown.com



MIRROR
Rockwood Arched Mirror
dunelm.com



LIGHT
Orb Hanging Light
kikilighting.com



PLANT POT
Ivyline Indoor Chelsea Planter
hayesgardenworld.com



COFFEE TABLE
Adelyn Coffee Table
furniturevillage.com

SHOP *the* LOOK VINTAGE TROPICAL

B L U S H



AUGUST
grahambrown.com



MIZUMI
grahambrown.com

BESPOKE MURAL
Vintage Tropical Blush
grahambrown.com



SOFA
Selimi Two-Seat Sofa, Peacock
my-furniture.com





WALLPAPER
Daintree Palm Blush
grahambrown.com



HEADBOARD
Flora Dusty Pink Velvet
Double Bed Headboard
swooneditions.com

SHOP *the* LOOK
DAINTREE PALM
BLUSH



POTION
grahambrown.com



WALL LIGHT
House of Cone, Brass
swooneditions.com



FABRIC
Daintree Palm Blush
grahambrown.com



THROW
Chiltern Throw
dunelm.com



MUTED BLUSH
grahambrown.com



IN THE SPOTLIGHT

In keeping with the Barbiecore theme, we are spotlighting the fiery fuchsia shade Pink Robin. Inspired by the bright shades found on the passerine bird native to South-Eastern Australia, this hot pink hue packs a punch.

Pair this daring shade with our equally daring Jardin Grey wallpaper and perfectly partnered fabric Opulence Magenta or clash with teal and yellow for a high impact look.

PINK ROBIN



CURTAINS
Opulence Magenta
grahambrown.com



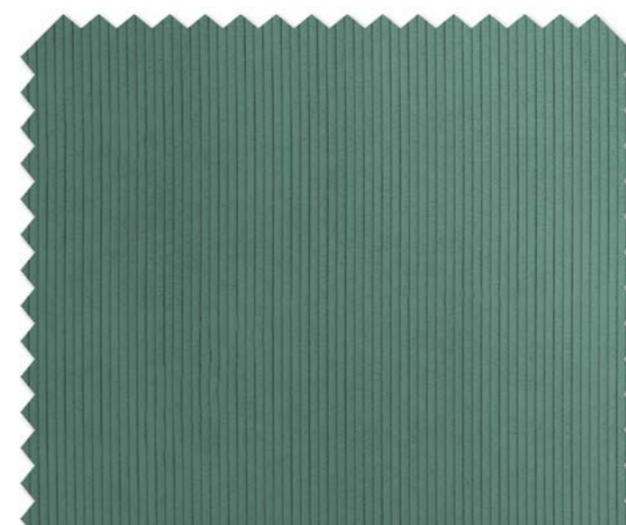
WALLPAPER
Jardin Grey
grahambrown.com



WALLPAPER
Prism Yellow
grahambrown.com



FABRIC
Courdroy Teal
grahambrown.com





@NICOLAHUTHWAITE

AT HOME *with* NICOLA HUTHWAITE

This month, we sat down with Nicola Huthwaite to find out what makes her tick when it comes to styling the home. The photographer and lifestyle influencer has undeniably made her 150-year-old Victorian home her own.

"My love for interiors developed through antique shopping," Nicola explains, "finding all the lovely pieces for the home made me want to create a vintage style interior." But Nicola's muted palettes and clever texturing are anything but dated. "I took a lot of inspiration from Victorian interior styling books and added my own style to it - mixing old and new."

And it was the quaint Victorian greenhouse that Nicola set her sights on for her latest project, explaining, "I always wanted a greenhouse for the garden to grow my own cut flowers, which I eventually did."

"I decided I wanted a light colour," she says. "However, I had to bear in mind that being outdoors, it's such a bright space that the colour would look even lighter."

Light massively affects the appearance of colour and the process for choosing an exterior shade is much the same as choosing an interior shade. Graham & Brown's peel & stick samples are great



for moving around within the space and reviewing during different parts of the day. Nicola adds, "always look for inspiration and what colour will work with the furniture."

Nicola eventually settled on the colour Plover in Graham & Brown's Exterior Eggshell finish and the result is the perfect extension of Nicola's signature style. We think the neutral shade complements her homegrown pink roses and violets beautifully, and hopefully her fabulous feline, Mittens (pictured above with Nicola), agrees!

Greenhouse painted in **PLOVER EXTERIOR EGGSHELL**

Meet us in the the SHADE

The latest launch of fabric designs from Graham & Brown includes some familiar favourites. The new range encompasses beautiful prints hand drawn in the Graham & Brown studio, which some eagle-eyed readers may recognise from the wallpaper range.

"Since our launch of soft furnishings last year, we have expanded our range introducing fresh new designs alongside our wallpaper offering but we cannot deny the love for our classic favourites," Explains Amy Bant, Soft Furnishings Specialist at Graham & Brown. "That's why we have taken 15 of our bestselling designs and translated them to fabric so you can enjoy them in new ways in your home."

The designs include familiar favourites Aquarium Lush, Coronation Craze, Daintree Palm, Glasshouse, Heritage Plaid, and Design of the Year for 2022 - Restore, as well as a considered palette of co-ordinating plains to accompany the product portfolio.

Bursting with wildlife and rich colour, Glasshouse Day is a charming scenic design that will frame any window beautifully. With a combination of brightening white, yellow ochres and bold navy, this design is stylish and statement-worthy.



GLASSHOUSE DAY CURTAINS & WALLPAPER *perfectly partnered with* AMALFI PAINT



RESTORE EMERALD ROMAN BLIND & WALLPAPER *perfectly partnered with* **BREATHE PAINT**

“Now available in a waterproof finish, they will stand up to any splash.”

The quirky Aquarium Lush is packed with character, enabling you to turn any space into an enticing aquatic setting. Perfect for a bathroom or downstairs lavatory, the design showcases tropical, colourful fish swimming amongst rich green leaves. “Aquarium Lush is a perfect pick for a bathroom,” Amy adds, “and with our roller blinds now available in a waterproof finish, they will stand up to any splash.”

Another notable design is the fresh and flamboyant verdant design, Daintree Palm. This allows you to bridge the gap between the outside and inside, adding foliage to your window dressings and bringing some tropical calm to the room. This statement design features large, luscious leaves in a deep green hue. Available in four colours, Pearl, Blush, Stirling and Midnight, this design can match any mood.

All Graham & Brown fabrics are printed onto 100% Better Cotton Initiative (BCI) accredited fabric, which is soft to handle and draped to provide the highest quality finish. The designs feature bold prints and vibrant colours offering the perfect statement piece for any room. Similarly, the plains and textures colour palette was created to partner with Graham & Brown’s favourite paint colours, whether it’s dark and moody, bright and fresh, or tonal neutrals, there is something for everyone.



AQUARIUM LUSH ROMAN BLIND & WALLPAPER perfectly partnered with **STARGAZER & ECUADOR PAINT**

In conversation with **CLARISSA HULSE**

“Above all it is important to remember that it is your home and you must love it.”



HOW DID YOU GET STARTED?

My business was set up totally by accident! I studied textiles at university and I always loved the process of screen printing, so soon after graduating I set up a studio hand printing silk scarves without a clue where I would actually sell them.

My big break came when I received an order for the New York department store Barneys, and an order from Liberty in London after that. I was hand printing day and night and before I knew it I had a business!

WHAT WAS THE BIGGEST HURDLE YOU OVERCAME?

Unfortunately, due to market difficulties, the business began to struggle and I was distraught when it was eventually put into liquidation. In hindsight, it was the best thing that ever happened to me. I started up again, with a lot of lessons learnt, but this time designing homewares. I spotted a gap in the market for interesting quirky cushions and bed linen and I immediately felt much happier.

Luckily other people seemed to agree with me and it rapidly grew into a successful business.

ANY ADVICE FOR UP AND COMING DESIGNERS?

I think if you want to strike out by yourself and have a business, it is really important to try and find your niche and really own it. Be the very best at it, so people come to you first for that look.

I love nothing more than when people send me photos of a meadow at sunset saying 'I thought of you when I saw this ...'

DO YOU FIND THE MOST INSPIRATION IN THE UK OR ABROAD?

The UK is just so beautiful and I am lucky enough to have a number of friends with incredible gardens where I can pick as

many flowers and seedheads as I like (my friend Tania being one - see our Tania's Garden mural!).

But it is of course so exciting to visit other countries and see totally different flora too. One notable trip was to Costa Rica, where we visited an ancient cloud forest which had literally thousands of species of ferns. All the ferns I photographed still haven't made their way onto designs yet, so watch this space!

TELL US A LITTLE MORE ABOUT YOUR DESIGN PROCESS.

All of my imagery is from original photographs and drawings I have created myself. My favourite way to work is to take lots of photos in the countryside as I am rambling about, and pick stems and leaves to take back to the studio to work with. This forms a huge plant archive, which we then arrange in different design formations.

I still enjoy hand printing as you can get such serendipitous results (hence the name Serendipity on one of my designs) but also utilise digital techniques. I am also utterly obsessed by colour schemes and every now and again spend a few days playing around with colour swatches and arranging lots of bits and bobs into beautiful mood boards to create new palettes.

WE LOVE YOUR USE OF COLOUR, ANY ADVICE FOR OUR READERS ON HOW TO CREATE THEIR OWN SCHEMES?

I think above all it is important to remember that it is your home and you must love it. I start with what I call the 'jigsaw approach'.

Start by gathering all the things you love, whether old possessions or a brand new beautiful fabric or wallpaper swatch that you have fallen in love with. Use these as the 'corner pieces' and build your colours around that, selecting several from these

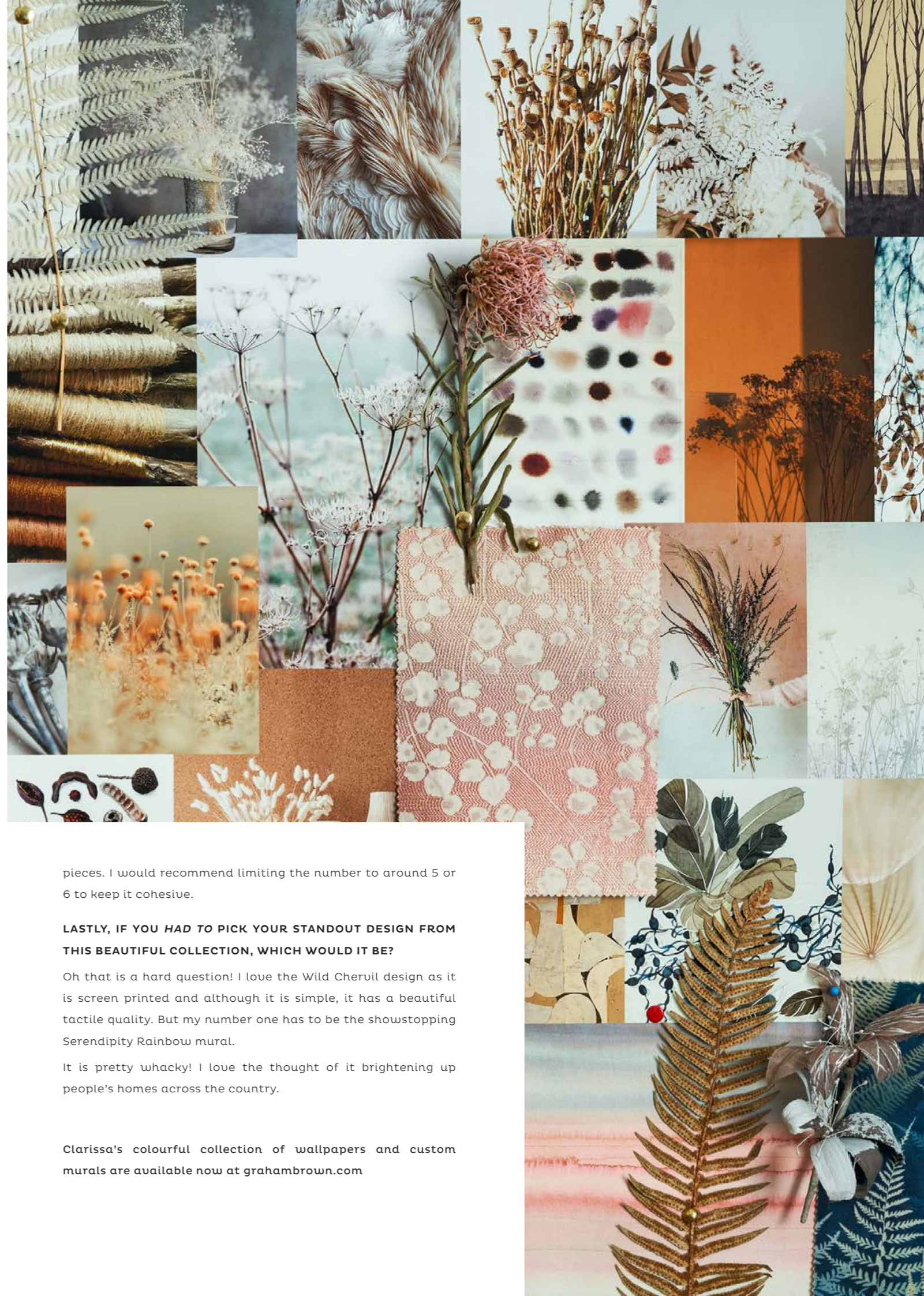
pieces. I would recommend limiting the number to around 5 or 6 to keep it cohesive.

LASTLY, IF YOU HAD TO PICK YOUR STANDOUT DESIGN FROM THIS BEAUTIFUL COLLECTION, WHICH WOULD IT BE?

Oh that is a hard question! I love the Wild Chervil design as it is screen printed and although it is simple, it has a beautiful tactile quality. But my number one has to be the showstopping Serendipity Rainbow mural.

It is pretty whacky! I love the thought of it brightening up people's homes across the country.

Clarissa's colourful collection of wallpapers and custom murals are available now at grahambrown.com



Recipe for **BARBIE SLAW**

The perfect side dish for your summer BBQ! A super simple slaw ready in 10 minutes, adding a splash of colour to your plate.

Ingredients

- 1 cooked Beetroot
- 1 Apple
- Small Red Cabbage
- 300ml Low fat natural yogurt
- 1 TBS Honey
- 1 TSP horseradish
- 1 TSP Turmeric

Method

- 1 Shred the Cabbage and cut the apple into matchstick-thin strips, we prefer to leave on the skin.
- 2 In a bowl combine the yogurt, honey, horseradish and turmeric. Ensuring it's mixed well. The honey will help the low-fat mayonnaise alternative stick to the ingredients.
- 3 Carefully dice your beetroot into small cubes. Remembering that it will stain, try wearing gloves to protect those French tips!
- 4 Add your beetroot to the yogurt mixture and stir, watch the white mixture turn to a lovely shade of pink. Finally add your cabbage and apple, and voila!



To Drink

MALIBU DREAM COCKTAIL

Ingredients

- 35ml of Raspberry Vodka
- 15ml of Malibu
- 50ml of Pineapple Juice
- 15ml of Raspberry Puree
- 15ml of Lime Juice
- 15ml of Sugar

Method

- 1 Mix all the ingredients together in a cocktail shaker with ice. (You can use a jug if you don't have one!)
- 2 Add crushed ice into your chosen glass and then pour your cocktail mix in. Top off with a raspberry and a slice of lime if you wish. Enjoy your refreshing cocktail in the sun!

How to...

PAINT A DREAM DOLLHOUSE



Looking for a summer holiday activity to keep the little ones entertained? Why not share your love for interior design with the kids, with this easy dollhouse transformation tutorial!

Time to play interior designer and their favourite doll is the client - you could even prepare with some cut and paste moodboarding.

Share your creations with us, using the hashtags ...

#grahamandbrown #lovinghome

You will need:

- A wooden dollhouse (*you can often find these secondhand!*)
- G&B Testers
- Paint Brushes
- Masking Tape

1. Select a range of Graham & Brown pink paints.

Tip: If you have leftover tester pots use them up!



2. Choose a key colour. We recommend Pink Robin for the ultimate Barbiecore pink shade. Then apply two coats of each colour.

3. Use a smaller brush or masking tape to help keep each section neat. Then leave to dry for 1-2 hours ready for the dolls to move in to their new dreamhouse!



SONGS TO DECORATE TO

July / August

- Toy* **NETTA**
- Barbie Girl* **AQUA**
- California Gurls* **KATY PERRY**
- Malibu* **KIM PETRAS**
- Cool for the Summer* **DEMI LOVATO**
- August* **TAYLOR SWIFT**
- Peaches* **JUSTIN BIEBER**
- Watermelon Sugar* **HARRY STYLES**
- Plastic Hearts* **MILEY CYRUS**
- Hotel California* **THE EAGLES**



OPEN THE SPOTIFY APP AND TAP SEARCH,
TAP THE CAMERA ICON AND SCAN THE
CODE ABOVE



@that_berry_house

UTOPIA PAINT



@coloursofnumberone

ICON & HAWAII PAINT



@sarahjayne_garman

ALOHA EXTERIOR EGGSHELL



@franiandpani

COPPICE FORREST WALLPAPER



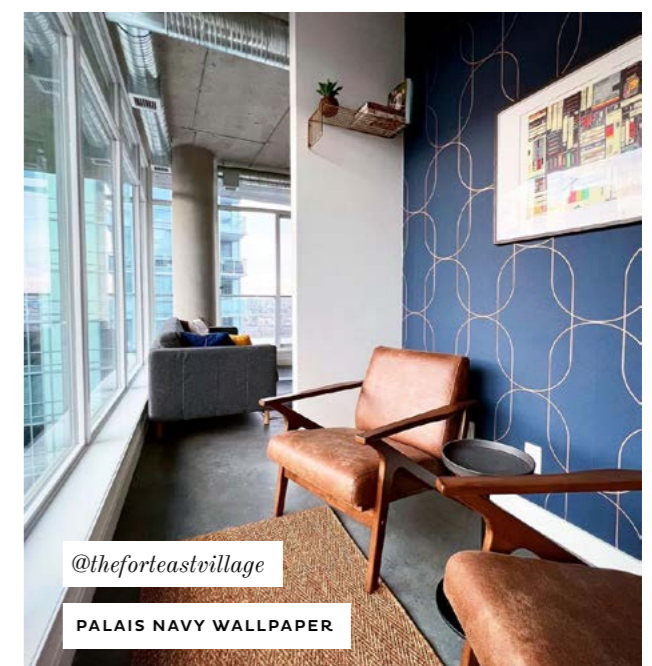
@thesmithinterior

COPPICE FORREST WALLPAPER



@unamattinastudio

BORNEO MIDNIGHT WALLPAPER



@theforteastvillage

PALAIS NAVY WALLPAPER

LOVING *your homes*

Tag us, submit a review and become part of the Loving Home family

#grahamandbrown #lovinghome

