

Loving

MAY JUNE 2023 • Issue 31

HOME

Brought to you by Graham & Brown

Around the WORLD

Our new designs celebrate uniqueness, creating a rich and diverse palette drawn from around the globe.

In the Spotlight THRONE

In the spirit of the King's coronation, we are spotlighting our regal grey shade Throne.

LET'S GO OUTSIDE

Our paint expert Estelle explains just how easy it is to refresh planters for summer...



OBASSIA SILK MIDNIGHT *perfectly partnered with* RHAPSODY



“Enjoy the historical weekend ahead and use your loving home to celebrate...”

ANDREW GRAHAM / CHIEF EXECUTIVE

Graham & Brown was established in post war Britain in 1946, by two great friends and great entrepreneurs: Harold Graham & Henry Brown. After buying their first wallpaper machine in 1938, they excitedly drew up plans to start their own business. However, their plans were delayed by the start of the Second World War. Unable to sign up for military service due to underlying health issues, Harold served by running a munitions factory in Blackburn to support the war effort. Henry saw active service and survived, and their dream became a reality on 2nd February 1946, in the reign of George VI, when Graham & Brown was established.

77 years later, the Coronation of King Charles III, following the incredible reign of his mother Elizabeth II, offers a time to reflect on how Graham & Brown has survived and prospered over so many years. The answer lies in our unwavering common purpose - Harold & Henry were driven to start their company to help many post war families create a 'loving home' in which they felt safe, cosy and where they could raise their families.

Today we are still driven by this purpose. With much uncertainty across the world and similar cost of living challenges, families have the same desire to use our products to create loving homes they can be proud of.

We also never lose sight of our humble beginnings and with the support of all our colleagues and our charity committee, we consciously seek ways to give back to people less fortunate than ourselves. This was something I was proudly able to share with Prince Charles at Buckingham Palace in 2016, when he awarded me an MBE for services to Charity and the establishment in our community of a world class youth zone. Blackburn & Darwen Youth Zone, of which Graham & Brown was a founder patron and remains one today, is dedicated to helping the young people in our community find the spark in themselves that enables them to fulfil their potential. It is an incredible charity and one we are proud to support.

I'm sure that King Charles III will bring a fresh approach to how he serves the country, adapting and evolving how he does this to reflect modern Britain and global issues, while continuing to celebrate his heritage and those who have served before. We will follow his lead, taking pride in our own history but keeping our eyes on the future. One thing we must do is keep changing and innovating to ensure we continue to fulfil our common purpose of helping families create loving homes.

Enjoy the historic weekend ahead and use your loving home to celebrate with family and friends.

In this ISSUE

| | |
|-----------------------------------|----|
| TREND TALK | 3 |
| AROUND THE WORLD - <i>New in!</i> | 6 |
| <i>Shop the Looks</i> | 9 |
| <i>How to:</i> LET'S GO OUTSIDE | 16 |
| <i>In the Spotlight:</i> THRONE | 18 |
| <i>How to:</i> WALLPAPER BUNTING | 20 |
| RECIPE FOR LOVE | 22 |
| MEET YOUR MATCH - <i>Quiz!</i> | 24 |
| LOVING YOUR HOMES | 26 |
| SONGS TO DECORATE TO | 27 |



SMASHED AVOCADO PAINT
THE SUNDAY TIMES



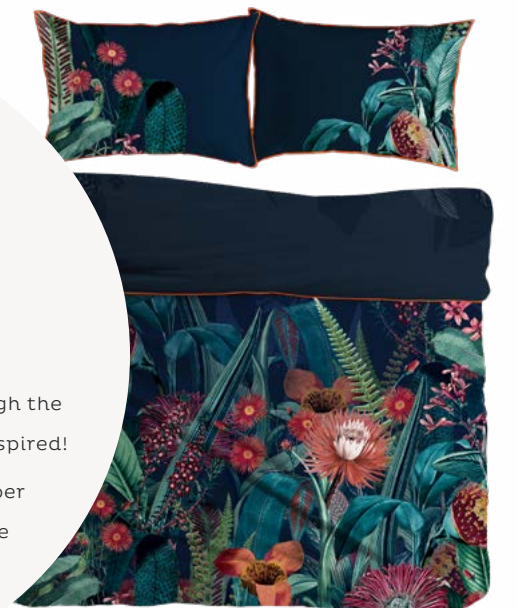
CONGO NIGHTFALL BESPOKE MURAL
VILLA D'ARTE NL

IN THE PRESS

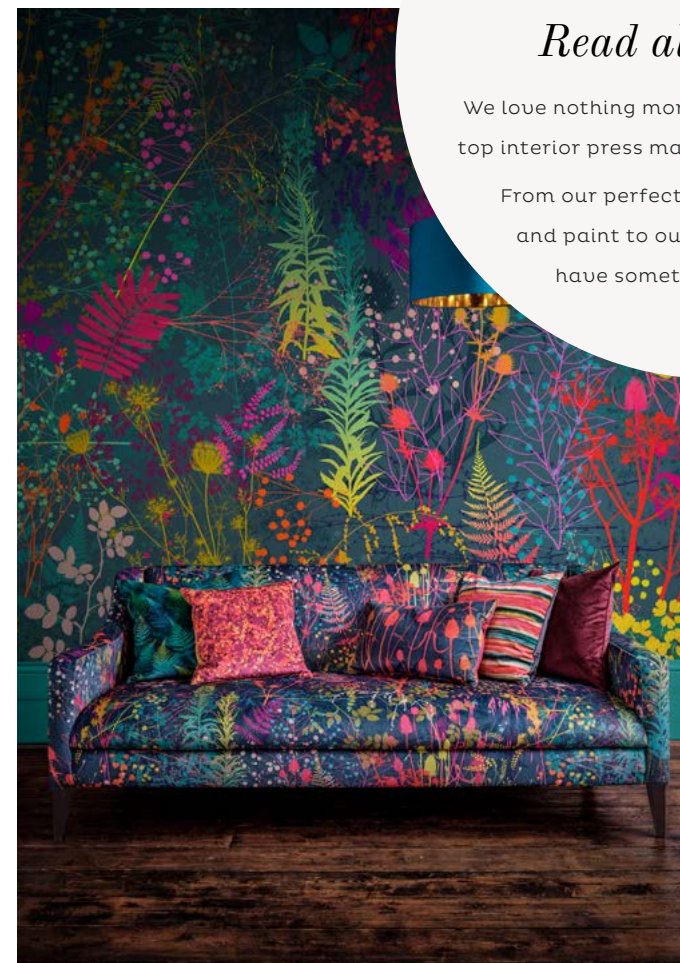
Read all about us!

We love nothing more than leafing through the top interior press magazines and being inspired!

From our perfectly partnered wallpaper and paint to our stunning murals, we have something for everyone!



TIGERLILY BED LINEN
HOME STYLE MAGAZINE



CLARISSA HULSE SERENDIPITY RAINBOW BESPOKE MURAL
BUSINESS OF HOME US



GRIZEDALE GREEN BESPOKE MURAL
ELLE DECORATION

— *Around the* — WORLD

Drawing from a desire to embrace the differences and imperfections in everyone and everything, our new designs celebrate uniqueness, influenced by multicultural references and a mixture of materials, creating a rich and diverse palette drawn from around the globe.

The Hartley Damask, Obassia Silk and Jardin Botanico wallpapers are the epitome of the Absolutely Flawsome trend for 2023. “The Absolutely Flawsome Trend has developed from a yearning to rebel against the ‘crowd following’ nature of society,” explains James Greenwood, Interior Expert at Graham & Brown.

“Encouraging you to break out from the norm and become more unapologetically individual.”

“Drawing from experiences gathered from around the world,” James continues, “these designs are often full of rich culturally diverse references and celebrate the things that make us

different.” Damask is a patterned textile, deriving its name from the fine patterned fabrics produced in Damascus, Syria, in the European Middle Ages. Originally made wholly of silk, gradually the name came to be applied to a certain type of patterned fabric regardless of fibre.

The Hartley Damask design brings the intricate filigree design to life with precious metallic intricacies and combines British country manor chic with the historical nature of this woven design technique. It is available in four colourways, Wedgewood, Teal, Neutral, and Sage, with perfectly partnered paints and fabrics carefully chosen to create a seamless interior scheme.



HARTLEY DAMASK TEAL *perfectly partnered with* TERRAZZO



WALLPAPER
Hartley Damask
grahambrown.com



BLANKET
Crinkled linen-blend
hm.com



FABRIC
Linum Navy
grahambrown.com



SHOP *the* LOOK

HARTLEY DAMASK

T E A L



TERRAZZO
grahambrown.com



CANDLE HOLDER
Scandi curves taper
sageandsill.com



TABLE
*Light & Living Rickered high
side table in Antique Black*
olivias.com



FOOTSTOOL
Pot Pie
loaf.com

WALLPAPER

Obassia Silk Midnight
grahambrown.com



FABRIC

Campanile Navy & Obassia Silk Midnight
grahambrown.com

BLANKET

Klippan Chevron Wool Blanket
toa.st.com



SHOP *the* LOOK
OBASSIA SILK
M I D N I G H T

LAMP

Metal Triangle Table Lamp Black
trouva.com



NOTTE

grahambrown.com



CUSHIONS

Alizarin Opulence & Deep Blue Opulence
grahambrown.com

WALLPAPER

Organdy Silk Midnight
grahambrown.com





‘The delicate detailing depicts the same ovate leaves and racemes of fragrant, white flowers as the tree itself, with the shimmering detailing creating the illusion of silk.’

The Obassia Silk wallpaper takes its name from the Styrax Obassia tree, native to Hokkaido Island in Japan. The delicate detailing depicts the same ovate leaves and racemes of fragrant, white flowers as the tree itself, with the shimmering detailing creating the illusion of silk.

Each colourway, Opulence, Teal, Midnight, and Dawn, offers a completely different ambience. The Dawn colourway is reminiscent of misty mornings in spring, bringing a soothing air to any space. Whereas the warm Opulence colour paired with our golden Turmeric or spicy Alizarin hues will create an exciting, textured space perfect for creativity.

French for Garden, the Jardin Botanico wallpaper takes its inspiration from French country design, a beautiful combination of the cosy countryside and effortless chic. French country décor

is traditionally made up of a cohesive floral colour palette, with papered walls, worn wooden furniture and crisp white bedding.

Jardin Botanico Black takes this style and uses it to breathe a new life into the walls, lush with foliage and teamed with a rainbow of unique colour blossoms, the design grows straight out of the paper and lives in the room. This design is available in four colourways, you can choose from the lighter design with pastel pinks, sage and neutrals working together to provide a calming atmosphere.

“The Absolutely Flawsome trend is all about seeing beauty in all items and making them shine again, thus creating a bespoke and special space,” James summarises. “The mix of materials that come as part of this trend can create a lovely palette mix in any room design.”



WALLPAPER

Jardin Botanico Black
grahambrown.com



DESK

Nordic Style Writing Desk
apexcity.co.uk



BLACK CAB
grahambrown.com

HYDRANGEA DAMSON

abigailahern.com



TABLE LAMP

Large Doric Glass & Concrete lamp
heals.com

SHOP *the* LOOK

**JARDIN
BOTANICO**

B L A C K



IAN THE
grahambrown.com

CANDLE STICK

Arctic candlestick
nordicnest.com



CHAIR

Wegner chair in charcoal black
loopandtwist.com



FABRIC
Opulence Mulberry
grahambrown.com

Let's go OUTSIDE

Grab your paint brush! Our paint expert Estelle explains just how easy to refresh planters for summer...

1. PREP THE AREA BEFORE PAINTING

Before you get to painting your planter, it needs to be moved undercover, somewhere dry. Then lay down some newspaper or a dust sheet underneath the planter.

2. SAND AND CLEAN THE SURFACE

Sand down the planter to make sure there are no splinters or loose paint. Doing this also provides the planter with texture which will help the paint adhere to it. Once you're done, wash the planter with a mild detergent to lift away any remaining grime and dust.

3. APPLY A PAINT PRIMER

To ensure an even and long-lasting finish, it's always best to start a paint job with an undercoat or primer. Choose a primer that closely matches the colour of your topcoat and apply in broad strokes, working with a wet edge.

4. APPLY A TOPCOAT OF EXTERIOR EGGSHELL PAINT

When painting the planter, it's best to start with the grooves and the edges using a small brush, ensure that your paint covers all the small nooks and crannies on the planter. Next use a wider brush to cover each of the small panels with paint, running a roller lightly over the paint in order to remove any stripes. Fill in the gaps ensuring each section of the wood has an even coverage of paint. Wait for the paint to completely dry and then apply a second coat. When painting each section, make sure you only use a light layer of paint, it's always better to do two light layers than one heavy layer. Once the planter has completely dried it can be moved back into place in your garden. Finally add your soil and plant up with your chosen flowers.



BREATHE EXTERIOR EGGSHELL PAINT

IN THE
Spotlight

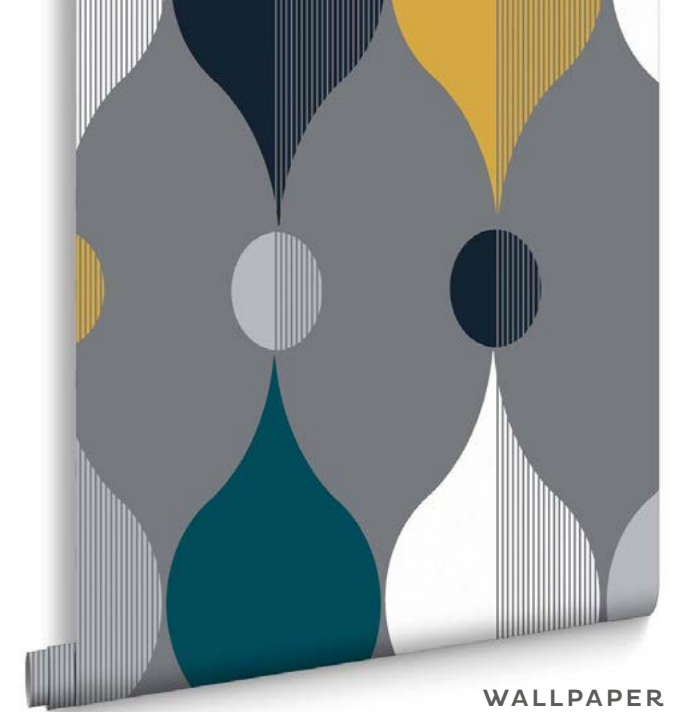
THR ONE

In the spirit of the King's coronation, we are spotlighting our regal grey shade Throne. This versatile deep grey is the perfect accompaniment to bold

colour. Try pairing with our Coronation Craze or Fable Mustard wallpaper designs for a high impact look, or go monochrome with perfectly partnered Cocoon Grey soft furnishings.



CURTAINS
Wallace Mustard
grahambrown.com



WALLPAPER
Coronation Craze Slate
grahambrown.com



WALLPAPER
Fable Mustard
grahambrown.com



PAINT
Acacia and Throne
grahambrown.com



FABRIC
Cocoon Grey
grahambrown.com





HOW TO MAKE *Coronation* WALLPAPER BUNTING

The Coronation of His Majesty The King and Her Majesty The Queen Consort will take place on **Saturday 6th May, 2023**. In celebration why not use up samples from your latest DIY project and make your very own bunting? Stand out at your street party and inspire your neighbours!

Don't forget to tag us! [@grahambrown](https://www.instagram.com/grahambrown)

We can't wait to see your Coronation creations!

You will need:

Leftover wallpaper samples

A4 paper

Ruler

Pencil

Scissors

Ribbon



Step 1

MEASURE

Measure a triangle template of 13cm along to top by 20cm either side.



Step 2

CUT

Cut this out and use as a guide to measure each of your bunting flags. *Tip: Use leftover wallpaper & fabric samples.*



Step 3

THREAD

Next, use a hole punch at the top of each flag and then thread through ribbon. *Tip: Alternate between plain and pattern designs!*



Step 4

STRING UP

Finally, it's time to string up your hand made bunting and let the Coronation celebrations commence!

Recipe for CORONATION Chicken Quiche

This issue we are combining the old with the new – the late Queen Elizabeth II's classic coronation chicken and the new coronation quiche of King Charles III.

Ingredients

| | |
|----------------------|------------------------|
| Olive oil | 1 tsp Ground coriander |
| 1 Chicken breast | 1 tsp Turmeric |
| Shortcrust pastry | 3 Eggs |
| ½ Red onion | 100g Clotted cream |
| 2 tbsp Mango chutney | 75ml Whole milk |
| 1 tsp Curry powder | |

- 1 Preheat the oven to 180C and butter your baking tin.
- 2 Dice the chicken breast and onion into small slices and add to a preheated frying pan with olive oil, frying for 3-4 minutes until cooked through.
- 3 Add the spices and mango chutney to the pan and fry for another minute ensuring all the chicken and onion is coated.
- 4 Add your shortcrust pastry to your tin, trim away excess and poke the bottom of the pastry lightly with a fork.
- 5 Place a sheet of baking paper and baking beans over your pastry and bake according to instructions.
- 6 Whilst the pastry bakes make your quiche mix – add your eggs, cream and whole milk to a bowl and whisk, then add the chicken and onions and mix thoroughly.
- 7 Add your quiche mix to the pastry and bake for 30 minutes until golden.



To Drink

Cooling CORONATION Pimm's

Pimm's is a British summertime classic and we've spruced it up with some coronation-worthy colour!

Ingredients

| |
|-------------------|
| 200ml Pimm's No 1 |
| 600ml Lemonade |
| Ice |
| 100g Blueberries |
| 100g Strawberries |
| 1 Sliced lemon |
| A sprig of mint |

- 1 Add ice to a large jug then pour over Pimm's and lemonade.
- 2 Wash your fruit and add to the jug along with the fresh mint then stir and serve.

MEET YOUR *Match!*

It can be overwhelming trying to decide which part of your home to refresh so we're making it easier with our simple quiz.

Whether you're moving into a new home or refreshing the family home, you will know exactly where to start.



Paint

Whether you've just moved in or you are planning to sell, a quick lick of paint will refresh your home in no time.



Wallpaper

For some added personality, style and colour, wallpaper is the perfect makeover for your home.



Mural

A bespoke mural will make an impact on your wall, perfect for creating a feature wall.



Curtains & Blinds

For the perfect finishing touch, our made to measure curtains and blinds are the perfect pick



Bedding

Keep it simple with some new bedding to refresh your interior

START HERE

HOW LONG HAVE YOU LIVED IN YOUR HOME?

Just moved in

1-5 years

5 years

IS YOUR STYLE MODERN OR TRADITIONAL?

Modern

Traditional

GET OUT THE DECORATING TOOLS OR KEEP IT SIMPLE?

Get the tools out

Keep it simple

DO YOU LIKE YOUR PROJECTS DONE IN A WEEKEND?

No, I can wait

Yes

MAXIMALIST OR MINIMALIST?

Minimalist

Maximalist

DECORATING ONE ROOM OR MULTIPLE?

Multiple

One

ADDING A FINISHING TOUCH OR STARTING FROM SCRATCH?

Fresh Start

Finishing Touch

Own

DO YOU RENT OR OWN YOUR HOME?

Rent

ARE YOU DECORATING TO SELL?

Yes

No

LARGE SCALE OR SMALL SCALE PATTERN?

Small

Large

WALLS OR WINDOWS?

Walls

Windows

BESPOKE OR QUICK FIX

Bespoke

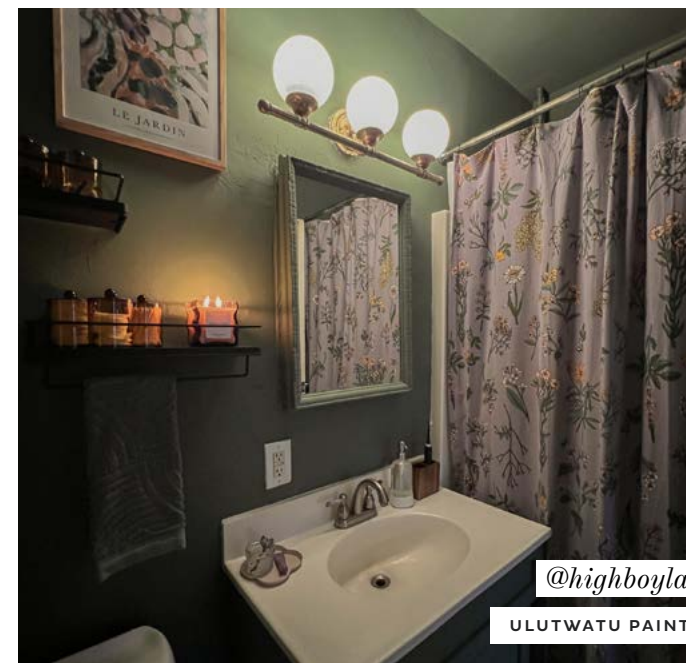
Quick



LOVING your homes

Tag us, submit a review and become
part of the Loving Home family

#grahamandbrown #lovinghome



SONGS TO DECORATE TO

Coronation Playlist

King YEARS & YEARS

We are the Champions QUEEN

Royals LORDE

Come Together THE BEATLES

Closer KINGS OF LEON

Love Reign O'er Me THE WHO

Viva la Vida COLDPLAY

Castle HALSEY

Everybody wants to
Rule the World TEARS FOR FEARS



OPEN THE SPOTIFY APP AND TAP SEARCH,
TAP THE CAMERA ICON AND SCAN THE
CODE ABOVE

