

Loving

NOVEMBER 2020 • Issue 8

HOME

Brought to you by Graham & Brown

INDULGE THIS AUTUMN

As temperatures drop, use rich jewel tones to warm up your interiors and create your very own cosy haven.

In the Spotlight

ROGER RED

Named after Roger Graham, son of founder Harold Graham, discover how this luxurious red will add depth and intrigue to any space.

A WINNING FORMULA

Read about how our paint became award-winning at this year's SBID Awards.



RINKU NATURAL partnered with GUV'NOR

Trend TALK



“Warm, spiced tones really are our favourite palette in the studio at the moment.”

N ights are drawing in, we are lighting the candles a little earlier and we don't know about you - but we almost always have a cosy throw to hand. This issue we are indulging in all things cosy and luxurious ready for Autumn.

An immediate way to add opulence to your home this season is with the use of metallics. Taking inspiration from majestic gates and fences that guard royal gardens, Rinku really does embody all that is luxurious. Bold, geometric lines create a solid structure for your wall and will create a majestic feel. The design is so versatile and has allowed us to present four equally impactful colour ways that are sure to transform your interior. Another one of our latest collections we are showcasing this month is Palais, which is a spectacular display of shimmering rounded lines that effortlessly flow with each other. Geometrics are always a hit with us, but as we move forward with our trends, lines have

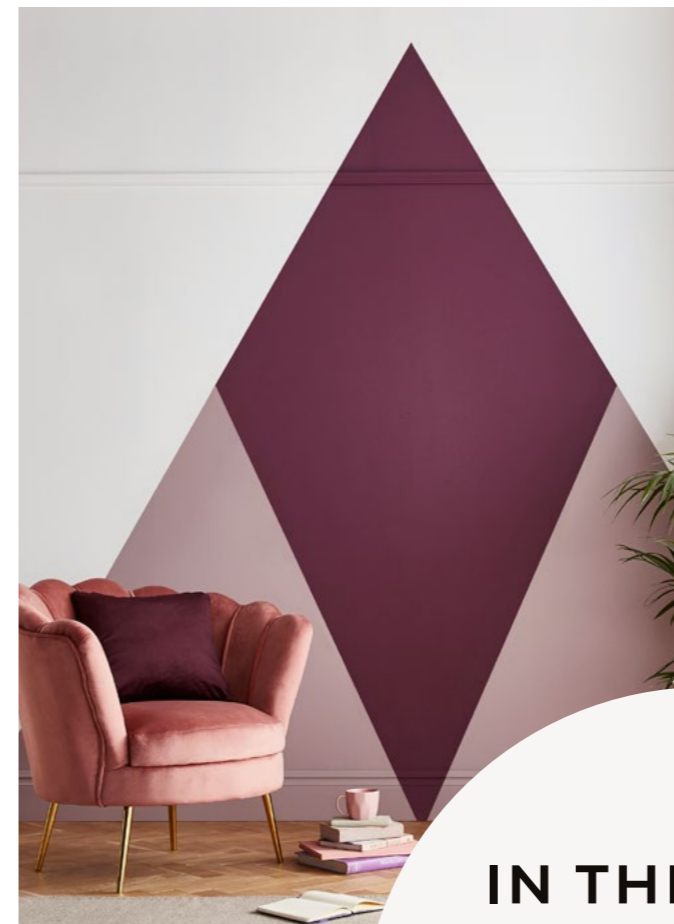
become softer and edges more curved. As always, with our own heritage in mind, we have released a brand-new colour, Roger Red. Affectionately named after Roger Graham, former Chief Executive and son of founder Harold Graham. Warm, spiced tones really are our favourite palette in the studio at the moment. Rich plums, burnt oranges and deep reds, really are the go-to hues in home trends. See how this gorgeous new colour can be used on page 18.

As ever you inspire us with all your amazing pictures of how you transform your home, this month however is a little different! Just when you thought you'd run out of walls to use; you look up and see the glowing space of your ceiling. Yes, the fifth wall is very much a thing and seems to be the favourite wall to paper at the moment! Using the same colour or pattern as your statement wall and continuing onto your ceiling will create a fantastic viewpoint, so we hope you feel just as inspired as us to get decorating!

JODY
STYLIST

In this
ISSUE

TREND TALK	3
IN THE PRESS	5
ENRICH YOUR SPACE	6
<i>Shop the look</i>	10
A WINNING FORMULA	16
SPOTLIGHT COLOUR	18
THINGS ARE LOOKING UP	20
FROM THE ARCHIVE	22
SONGS TO DECORATE TO	27



as seen in **THE INDEPENDENT**



TIRU
as seen in **STYLE AT HOME**

IN THE PRESS

Read all about...us!

We like nothing more than leafing through the top interior press magazines and being inspired by their schemes and gorgeous imagery!

Did you spot these pattern and colours from our product range? Including *Aspen Pine* in dutch interior magazine *Residence*.



as seen in **RESIDENCE**



as seen in **THE SUNDAY TIMES**



as seen in **KBB**

Enrich your living **SPACE**

Autumn is well and truly upon us. The leaves are falling and temperatures are dropping – to us, this sounds like the perfect opportunity to give our homes a cosy transformation!

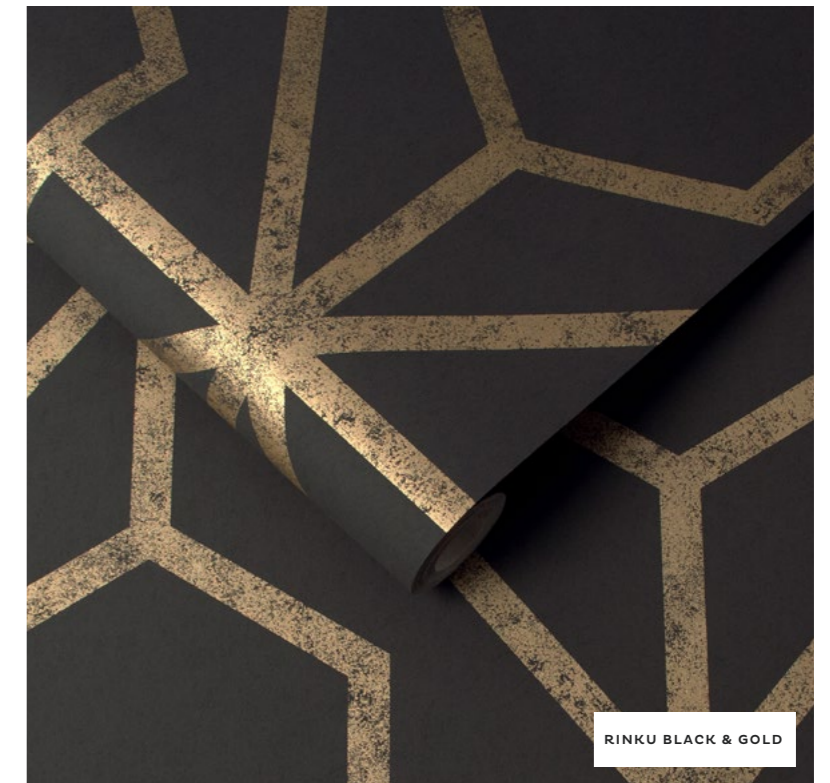
Our homes are a place to escape and reflect, and let's face it, now more than ever we want to withdraw from the complexities of the modern world and create a relaxing atmosphere to unwind in. There has been a rise in demand for simplified designs in order to accommodate this; more specifically, the geometric.



RINKU NAVY & SILVER partnered with RHAPSODY



RINKU GREEN & COPPER *partnered with ADELINE*



RINKU BLACK & GOLD

A show-stopping geometric packed with character

Geometrics have been used in architecture and interiors for hundreds of years, and they have no plans of stopping! We've made many sleek, clean and sharp geometric wallpapers in our time and our two latest additions are nothing short of that.

Rinku, taking its name from the Japanese word for 'links', is a large-scale interlocking geo with distressed metallic detailing. Creating a modern focal point, this wallpaper brings harmony and rhythm into a modern setting. Available in four calming colourways.

Bedroom Luxe

SHOP THE LOOK



VASE *Beaumont Conical Vase*
made.com

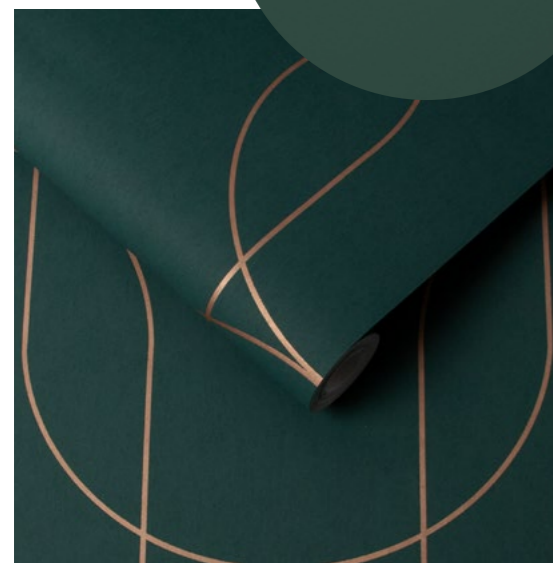
CUSHIONS

Soft Gold Lavish, Adeline Green Opulence
grahambrown.com

ADELINE
grahambrown.com



PLANT POT *Gold Iron Plant Pot & Stand*
oliverbonas.com



PAPER *Palais Green & Copper*
grahambrown.com



PALAIS GREEN & COPPER partnered with ADELINE



PALAIS NAVY & COPPER partnered with RHAPSODY

Watch elegant curves glide along your walls

Palais develops the popular 'lozenge' shape into a chic, large-scale print. Featuring smooth metallic curves, we can only describe it as harmonious. The Navy and Copper colourway (pictured left) works beautifully in a space teamed with luxurious brown tones, really making the copper detailing stand out. Palais is the perfect touch for a home that wants to be chic yet subtle.



We've created these designs in a mix of colourways to suit your personal style – you can either indulge yourself in the trend that is moody jewel tones, or opt for a slightly lighter and more gentle option like Palais Grey and Rose Gold (pictured above).

Palais Black and Gold (pictured right) strikes the perfect balance of moody and modern, making it perfect for spaces like bedrooms.



A WINNING FORMULA

Adeline paint in Resistance Ultra Durable Matt Emulsion has been named winner in the Surfaces & Finishes category at the inaugural SBID Product Design Awards for 2020.

The accolade was announced online on Friday 23 October in a celebration of interior design excellence, alongside this year's eagerly anticipated SBID International Design Awards winners. The awards celebrates both exceptional designers of interiors and top-class architectural and home interior products, including an array of key industry names.

The Surfaces & Finishes category is for architectural and interior surfaces and finishes, ranging from panels, wallcoverings, stone and veneers to ceramics, wood, acrylic, glass, mouldings, paints and tiles. Like all Graham & Brown paints, Resistance Ultra Durable Matt Emulsion is water-based, which means it is low odour and has a lower VOC (Volatile Organic Compound) level than any oil-based paints. Resistance in particular is also ultra-low-sheen, boasting a 1% sheen level, and has been awarded Class 1 Wet

Scrub resistance when tested under regulations DIN EN 13 300, which means it will retain its flat matt finish even after cleaning. This means you can use it with confidence in high traffic areas, such as hallways, and even kids' playrooms. The high quality formula is also moisture repellent and designed to keep interior walls and ceilings looking beautiful for longer, so it's ideal for bathrooms and kitchens to reduce build-up of dirt and mould.

The Adeline shade, which was the Graham & Brown Colour of the Year 2020 and remains a staple hue in upcoming interior trends, is a deep rich bottle green that channels the healing properties of nature and allows you to create a balancing and serene setting within your home, while maintaining a stylish edge! The shade has staying power as part of a wider interiors trend, which looks to biophilic design and bringing the outdoors



in, in order to inspire healthier homes and balance the ever-increasing amount of technology making its way into every aspect of our lives.

The Society of British and International Interior Design (SBID) is a professional accrediting body for the Interior Design industry across the UK, Europe and beyond.

Despite the unprecedented challenges facing the industry this year, the 2020 awards have been the most globally represented edition to date, with finalists hailing from 49 countries across the world.

The winners from each category can be viewed at [sbidawards.com](https://www.sbidawards.com)

ROG ERR ED.

ONE OF OUR TOP TRENDS FOR NEXT YEAR, THIS *warm AND luxurious* RED WILL ADD DEPTH AND INTRIGUE TO ANY SPACE.

Affectionately named after Roger Graham, former Chief Executive and son of founder Harold Graham, this gorgeous colour can be used with warm neutrals for a comforting interior or paired with deep blues to create an opulent feel.



ROGER RED

Colour Spotlight



PAPER *Horizon Ruby*
grahambrown.com

Tonal pairings are a clever way to really highlight your key colour ensuring that all walls of the room tie together cohesively.

Roger Red works brilliantly when used as a feature wall partnered with lighter hues of Sienna and Capulet.



CUSHIONS *Praline Luxe, Orange Lavish*
grahambrown.com



PAINT *Sienna, Capulet*
grahambrown.com



Contrast with vivid paint partners to create a dramatic fusion of colours. Partnering *Roger Red* with shades of deep blue will give you a classic colour combination that is sure to create a cosy yet trend led space.



CUSHION *Navy Luxe*
grahambrown.com



PAINT *Boyfriend Jeans, Firework*
grahambrown.com

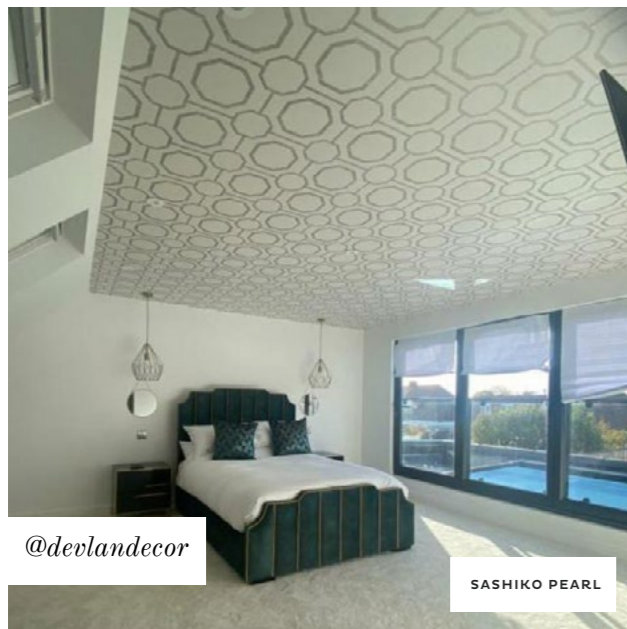
THINGS ARE LOOKING UP!

LOVING YOUR HOMES

Why should walls have all the fun?

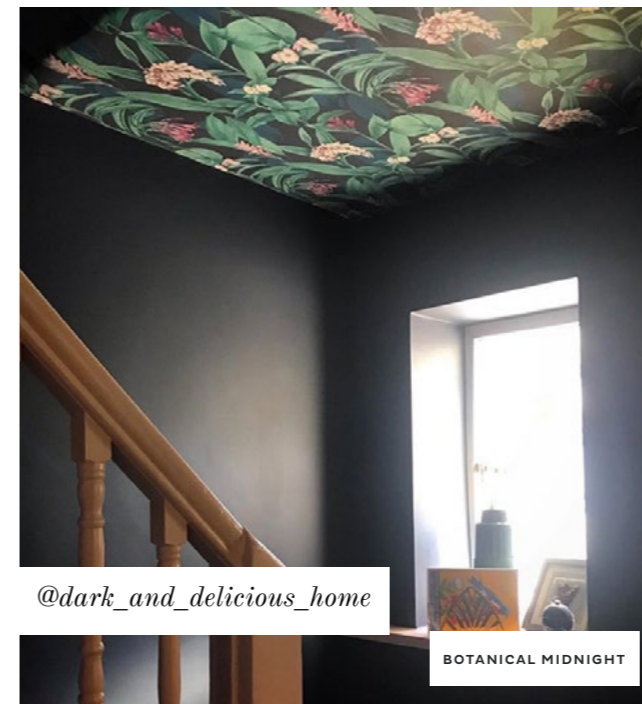
We have been inundated with stunning wallpapered ceilings, the fifth wall trend has certainly taken off and we can't get enough. It's not always the easiest of jobs but it's certainly worth it!

Don't forget to tag us and submit a review
#grahamandbrown #lovinghome

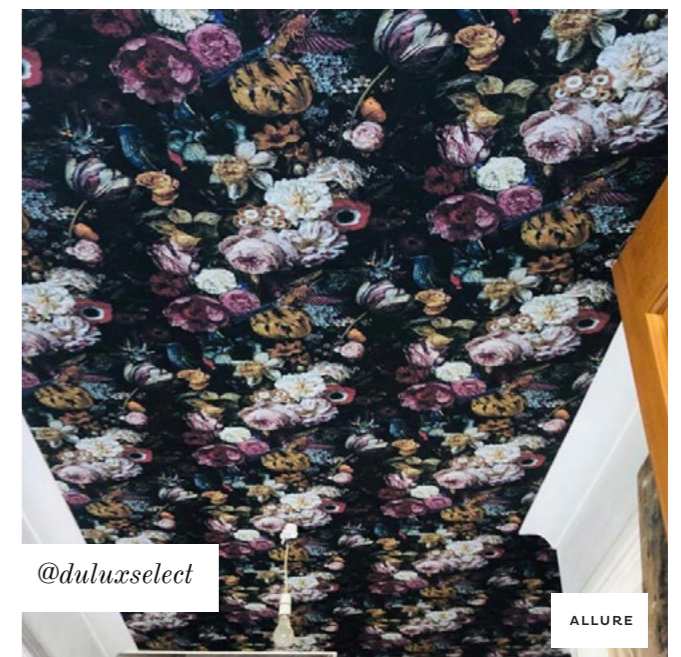


TOP TIP Turn off the electric

This may sound self-explanatory but we recommend removing light fittings to make wallpapering around them much easier, so don't forget put your own safety first.



TOP TIP
Make sure you have an even surface
Ceilings can be notorious for uneven finishes, especially if you've had to revamp a textured plaster finish.



TOP TIP Create a pathway to work to

Mark out the width of each wallpaper drop, minus two inches for overlap.
Use a light pencil outline to highlight where each section is to be applied.

FROM THE ARCHIVE

Stroll through the **MANOR HOUSE GROUNDS**

Taken from our archive, this picturesque mural has had a beautiful update for our new collection of bespoke murals.

Overlook a stately manor house with our Stately Manor wall mural. Available in three different colours, Grey (pictured), Blue and Sepia - there is one to suit every home. Stately Manor Grey is our gorgeously detailed wall mural ready to place you in the midst of a sophisticated countryside setting. In a calming grey and white colour palette, this wall mural is easy to dress up or down and catch the eye of anyone who enters your home.



STATELY MANOR GREY partnered with CHIMNEY SWEEP & CRUMPET



STATELY MANOR BLUE *partnered with* SHARD, BOYFRIEND JEANS, & KNOCKOUT



Another colour that is available is this inky blue colour palette (pictured left). It contrasts perfectly with a bright, crisp tone making it the epitome of elegance. We have handpicked a selection of paper finishes each offering a key feature or benefit. Whether you're looking for a finish to help mask wall imperfections or the most luxurious finish, we have carefully selected a paper finish for all decor styles and wall types.



Aswell as Stately Manor joining our extensive range of bespoke murals - say hello to Fantasy Floral. A stunning floral haven that is available in Twilight (pictured) and Bloom.

This colour palette is a mix of deep and light blue hues and is the perfect balance for a relaxing atmosphere in your home. Intricate detailing packs this design with life and character.

To browse the rest of our bespoke range visit [grahambrown.com](https://www.grahambrown.com)

SONGS TO DECORATE TO

November Playlist

- | | |
|---------------------------------|---------------|
| <i>Sparks</i> | COLDPLAY |
| <i>Ruby</i> | KAISER CHIEFS |
| <i>She Keeps Me Warm</i> | MARY LAMBERT |
| <i>99 Red Balloons</i> | NENA |
| <i>Firework</i> | KATY PERRY |
| <i>Red</i> | TAYLOR SWIFT |
| <i>Set Fire to the Rain</i> | ADELE |
| <i>Red Red Wine</i> | UB40 |
| <i>Holding Back The Years</i> | SIMPLY RED |
| <i>We Didn't Start the Fire</i> | BILLY JOEL |



SEARCH **GRAHAM&BROWN** ON SPOTIFY
OR TAP THE CAMERA ICON IN THE SEARCH BOX
AND SCAN THE CODE ABOVE

