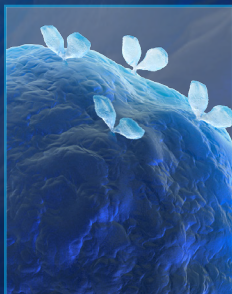
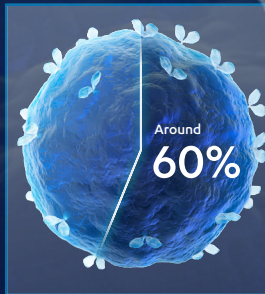


# IGHV status - optimise your treatment choice in CLL<sup>1-4</sup>



The mutational status of the immunoglobulin heavy chain (IGHV) locus is known to predict survival outcomes in CLL, with patients with unmutated IGHV generally expected to suffer from more aggressive and progressive disease than those with mutated IGHV.<sup>1,2</sup>



**Around 60%** of patients requiring treatment for CLL have the unmutated IGHV subtype of CLL.<sup>3,4</sup>

## Checking your patients' IGHV mutational status could optimise your treatment choice

Current ESMO and iwCLL guidelines recommend IGHV mutational status testing in patients with CLL before initiating treatment. Testing can help you choose the optimal front-line treatment and could improve outcomes for many of your patients.<sup>5,6</sup>



before treating CLL

### References:

1. Mato A, et al. *Br J Haematol* 2016;175:892-903.
2. Coscia M, et al. *Leukemia* 2011;25:828-837.
3. Fischer K, et al. *Blood* 2016;127(2):208-215.
4. Eichhorst B, et al. *Lancet Oncol* 2016;17(7):928-942.
5. Hallek M, et al. *Blood* 2018;131(25):2745-2760.
6. Eichhorst B, et al. *Ann Oncol* 2021; 32(1):23-33.